




## TrolMaster HCS-2 Hydro-X Pro Controller User Manual

[Home](#) » [TrolMaster](#) » TrolMaster HCS-2 Hydro-X Pro Controller User Manual 

### TrolMaster HCS-2 Hydro-X Pro Controller

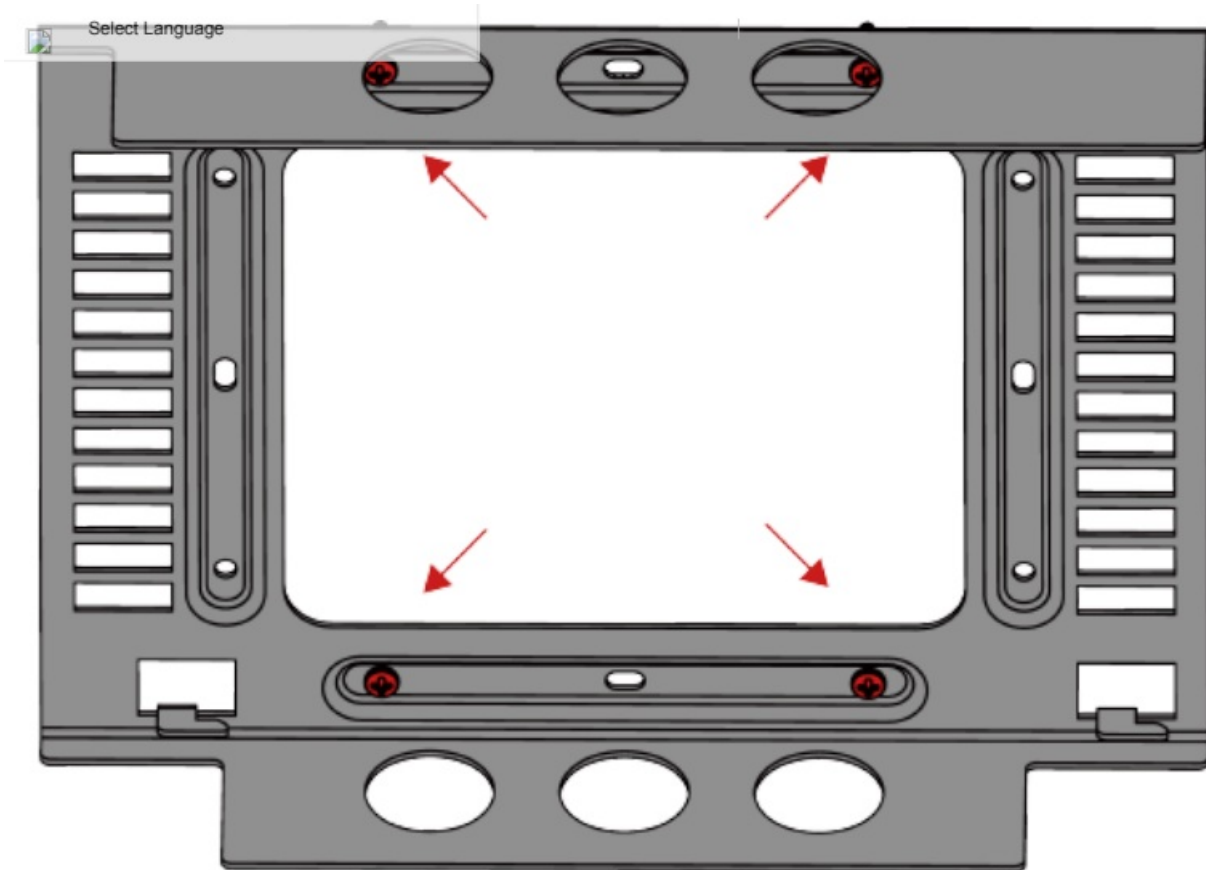


## Contents

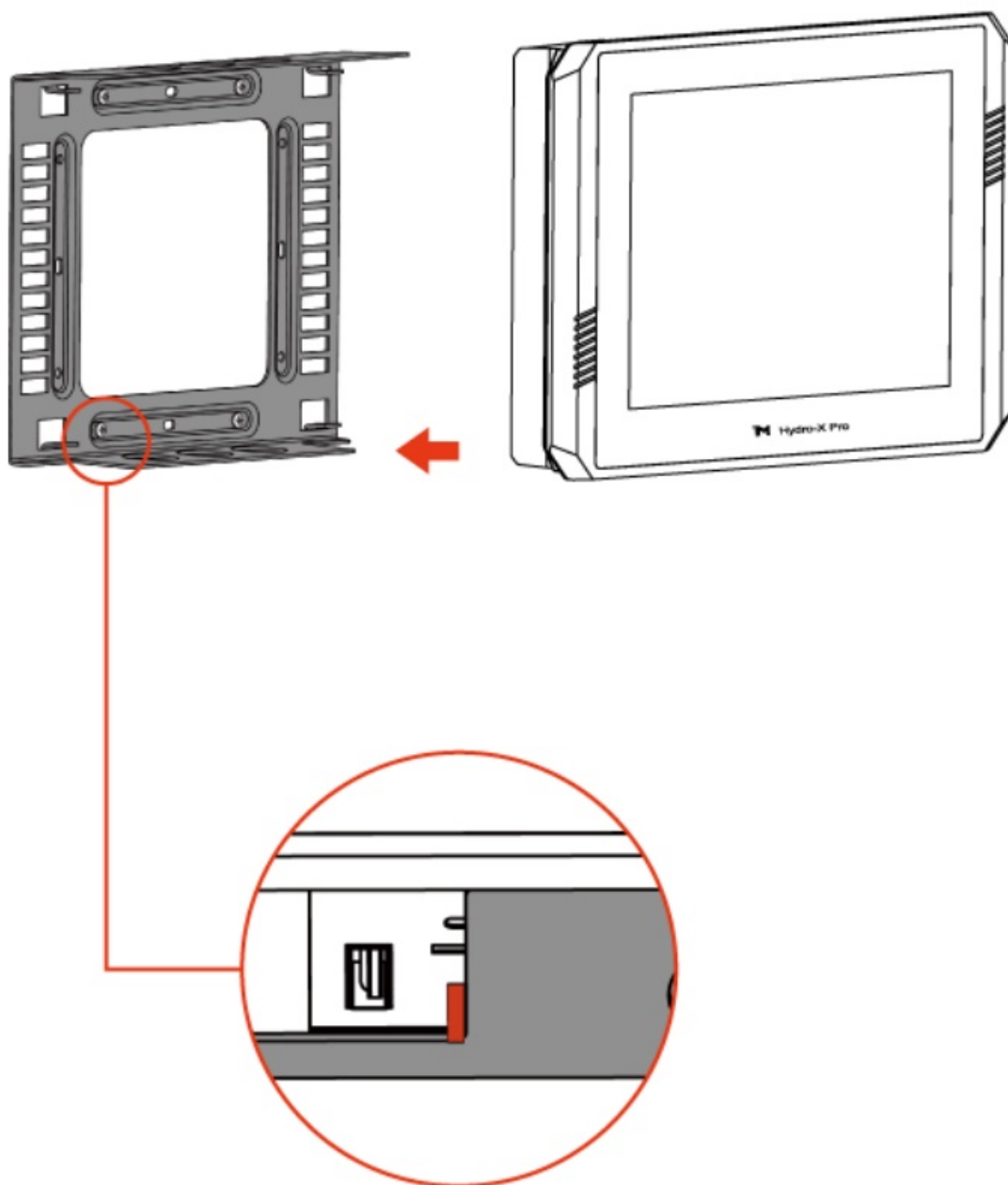
- [1 INSTALLATION INSTRUCTIONS](#)
- [2 GENERAL INFORMATION](#)
- [3 REGISTRATION](#)
- [4 SPECIFICATIONS](#)
- [5 ENVIRONMENTAL AND DISPOSAL CONCERNS:](#)
- [6 Documents / Resources](#)
  - [6.1 References](#)
- [7 Related Posts](#)

## INSTALLATION INSTRUCTIONS

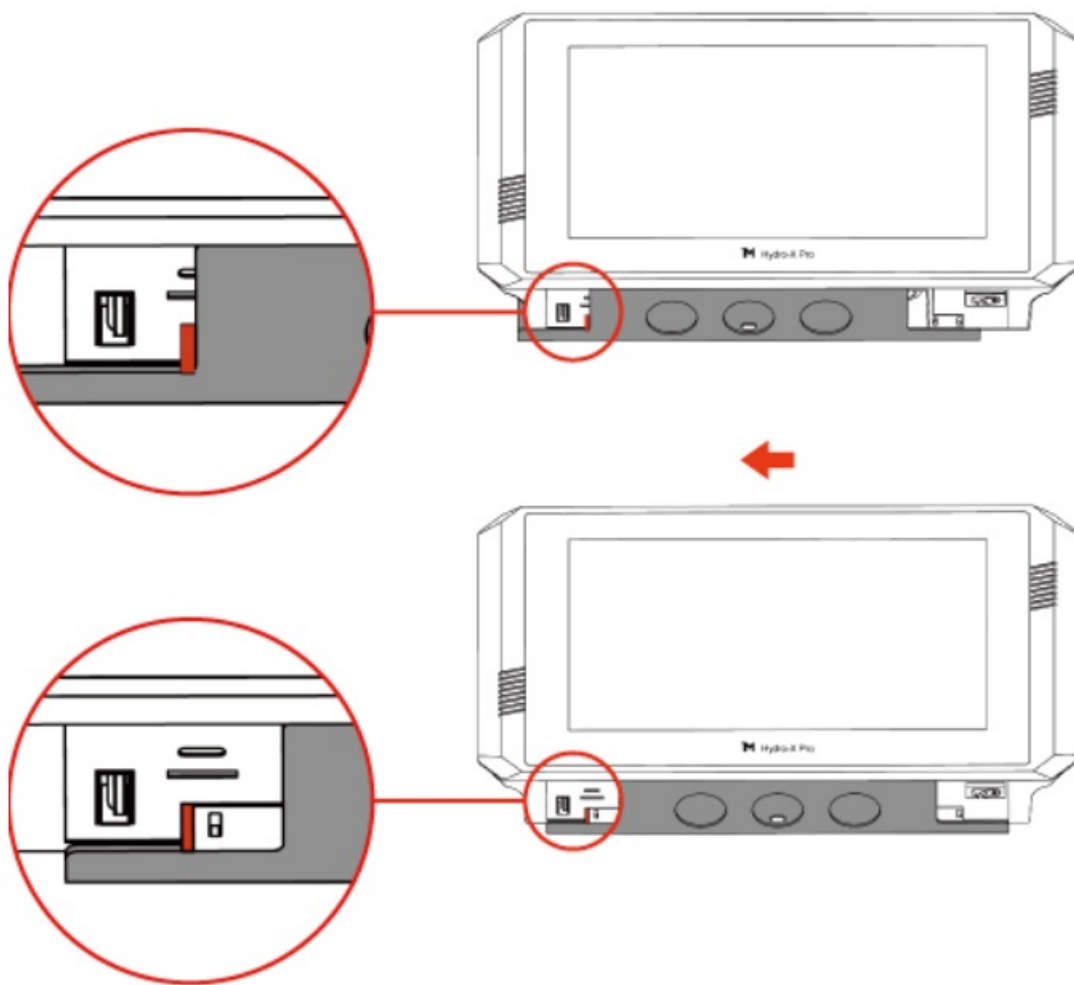
1. Secure the mounting plate to the wall using 4 screws.



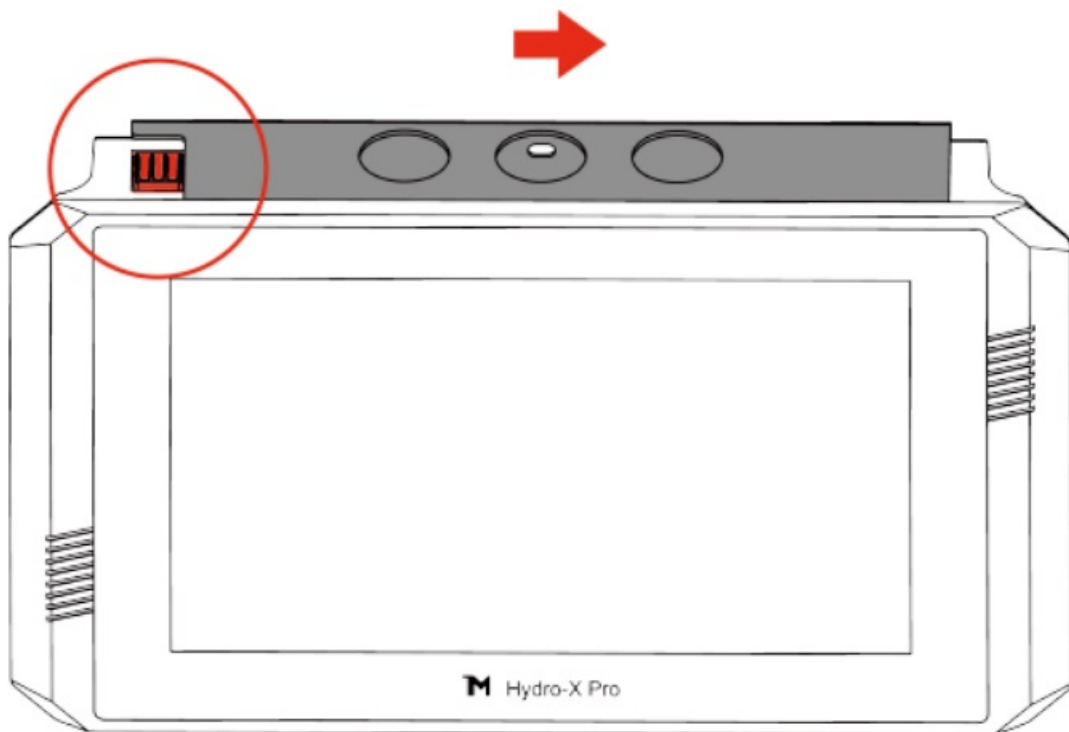
2. Place the controller onto the mounting plate capture hooks.



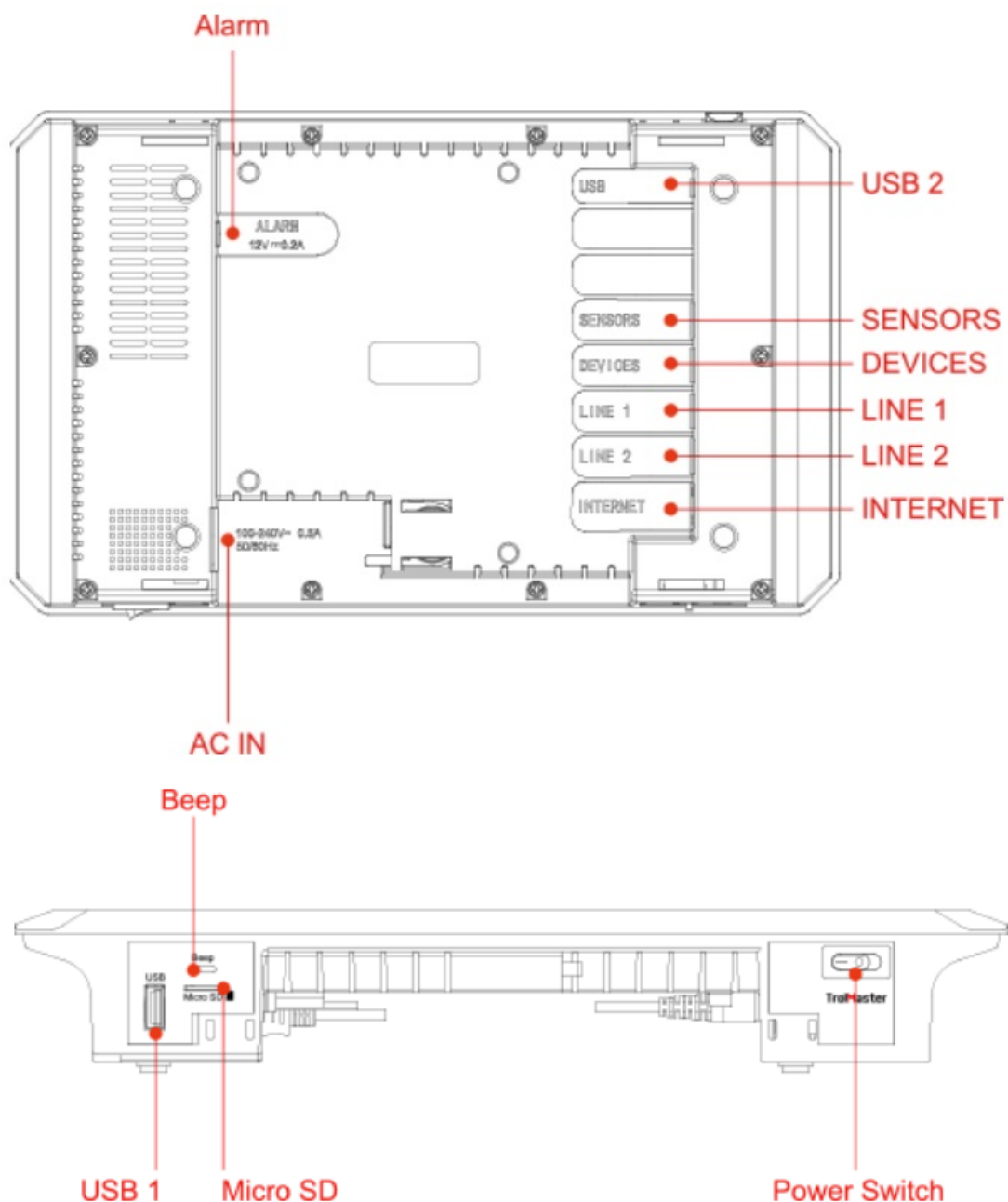
3. Slide the controller from right to left until it "locks" into place.



4. To release the controller, press on the lock and slide the controller to the right.



5. Controller Power core, sensors, device stations and internet cable to each ports accordingly



6. Scan the QR code below to view the online tutorial video.



## GENERAL INFORMATION

## WARRANTY

TroiMaster only uses high quality components Under normal. operating conditions, the mechanical and electronic

components are covered by a three-year warranty from the original date of purchase. For service, return the HCS-2 Hydro-X Pro Environment Control System. System in the original packaging to your shop with the original sales receipt. Components that are excluded from warranty are components that have failed due to abnormal usage. In the case of defects of the HCS-2 Hydro-X Pro Environment Control System, the controller will either be replaced or repaired using new or reconditioned products or parts. If the Controller will be replaced this limited warranty shall apply to the replacement product for the remaining initial warranty period, i.e. (three) 3 years from the date of purchase of the original product.

## RETURNS

All returns need to be done in the original packaging in order to avoid damages of the product during transport. Defective products need to be returned to factory or service shop for repair. Non-professionals DO NOT open the cabinet to prevent electric shock or damage to the equipment.

## REGISTRATION

TrolMaster Agro Instruments Co., Ltd. will occasionally release updated firmware for the HCS-2 Hydro-X Pro Environment Control System.

By registering your HCS-2 Hydro-X Pro Environment Control System on our website [www.trolmaster.com](http://www.trolmaster.com) we can notify you when an update is available.

We will not sell, rent or share your personal information.



CONFORMS TO  
UL STD.61010-1  
CERTIFIED TO CSA STD.  
C22.2#61010-1



**WARNING :** DO NOT allow the HCS-2 Hydro-X Pro Environment Control System to be exposed to water or excessive heat. DO NOT open or attempt to repair or disassemble the controller, as there are no user-serviceable parts inside. Opening the controller will void the warranty.

If the surface of HCS-2 Hydro-X Pro Environment Control System is dirty, wipe it with a dry towel. The HCS2 Hydro-X Pro Environment Control System operates under natural ventilation conditions.

## SPECIFICATIONS

Input Voltage	100-240V-, 50/60Hz, 0.5A
Certifications	ETUFCC
Degree of Ingress Protection	I P20
Max Number of HID Fixtures	256'2
Max Distance to Device to be connected	1000 meters
All-in-1 Pro Sensor (MBS-PRO)  Full Spectrum Quantum Sensor (MBS-PAR) Water Content Sensor (WCS-1)	Maximum 50 sensors in combination
Device Stations	Maximum 50 devices in combination
Light Intensity Range	0-2000PPFD
Moist Range	0-100%
Temperature Range	32-138.2 °F
Temperature Accuracy	± 0.36°F
Temperature Deadband	3°F(1-15)
Humidity Range	5-95%
Humidity Accuracy	±5%
Humidity Deadband	3%(1-15)
CO2 Range	0-250OPPM
CO2 Accuracy	±(5% +30)PPM
CO2 Deadband	5OPPM(10-250)
Working Environments	Temperature 32-122°F
	Humidity 590%

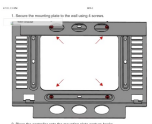
## ENVIRONMENTAL AND DISPOSAL CONCERNS:

THIS PRODUCT CONTAINS A BATTERY AND OTHER COMPONENTS WHICH MUST BE DISPOSED OF PROPERLY



This symbol displayed on a product, its accessories, or its packaging indicates that this product may not be discarded as household waste. Dispose of the equipment through a recycling center that handles electronics and electrical appliances. By disposing of the equipment in the proper and lawful way you will be helping to prevent possible damage to the environment and risk to public health.

## Documents / Resources



## [TrolMaster HCS-2 Hydro-X Pro Controller](#) [pdf] User Manual

HCS-2 Hydro-X Pro Controller, HCS-2, Hydro-X Pro Controller, Pro Controller

## References

- [TrolMaster.com](#)
- [TrolMaster HCS-2](#)