

TrolMaster
HCS-2 Hydro-X Pro
Control System



TrolMaster HCS-2 Hydro-X Pro Control System User Manual

[Home](#) » [TrolMaster](#) » TrolMaster HCS-2 Hydro-X Pro Control System User Manual 

Contents

- 1 TrolMaster HCS-2 Hydro-X Pro Control System
- 2 Product Usage Instructions
- 3 QUICK INSTRUCTION
- 4 GENERAL INFORMATION
- 5 REGISTRATION
- 6 SPECIFICATIONS
- 7 ENVIRONMENTAL AND DISPOSAL CON
CERNS
- 8 CONTACT
- 9 FAQ
- 10 Documents / Resources
 - 10.1 References

TrolMaster

TrolMaster HCS-2 Hydro-X Pro Control System

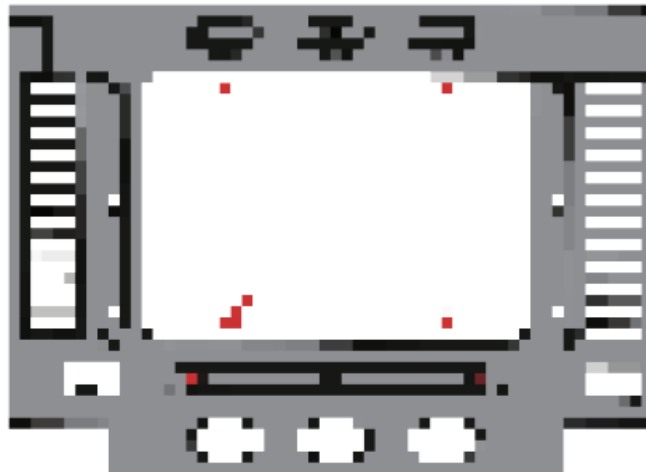


Product Usage Instructions

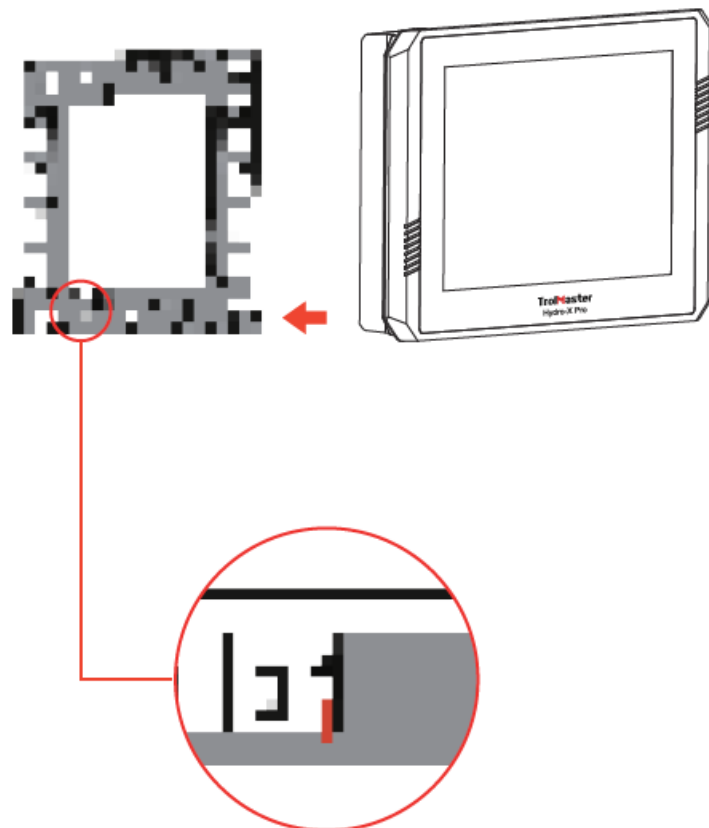
- Secure the mounting plate to the wall using 4 screws.
- Place the controller onto the mounting plate capture hooks.
- Slide the controller from right to left until it locks into place.
- To release the controller, press on the lock and slide the controller to the right.

QUICK INSTRUCTION

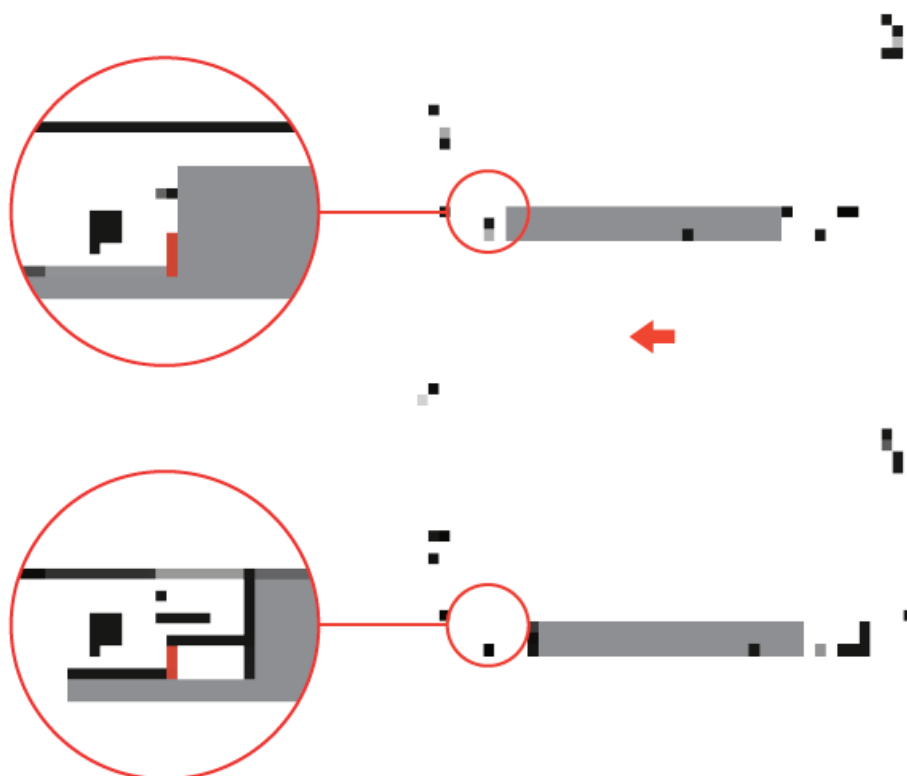
1. Secure the mounting plate to the wall using 4 screws.



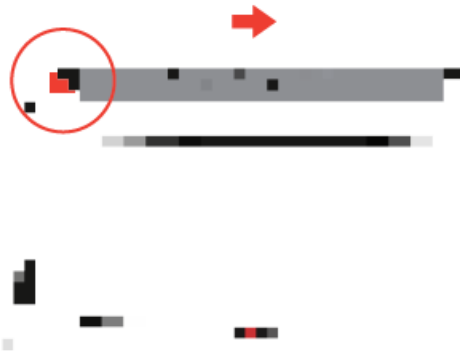
2. Place the controller onto the mounting plate capture hooks.



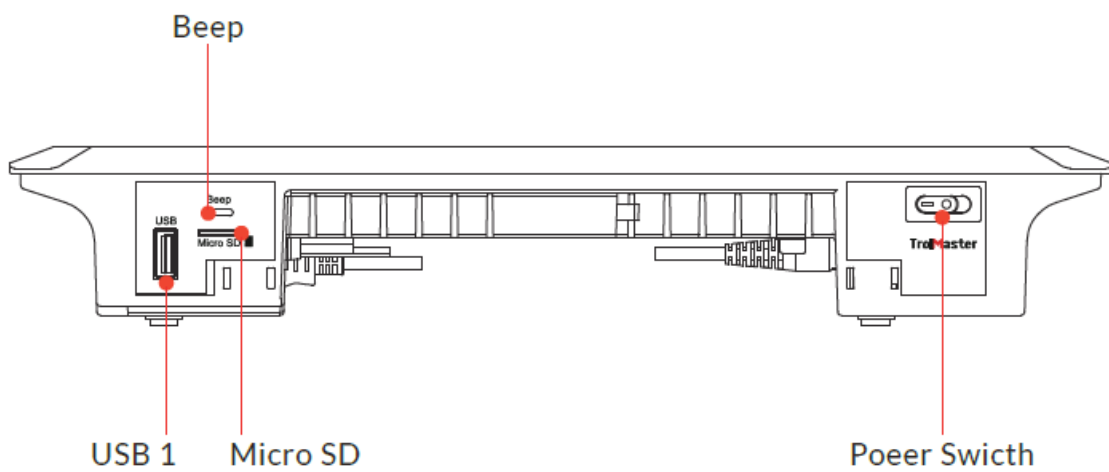
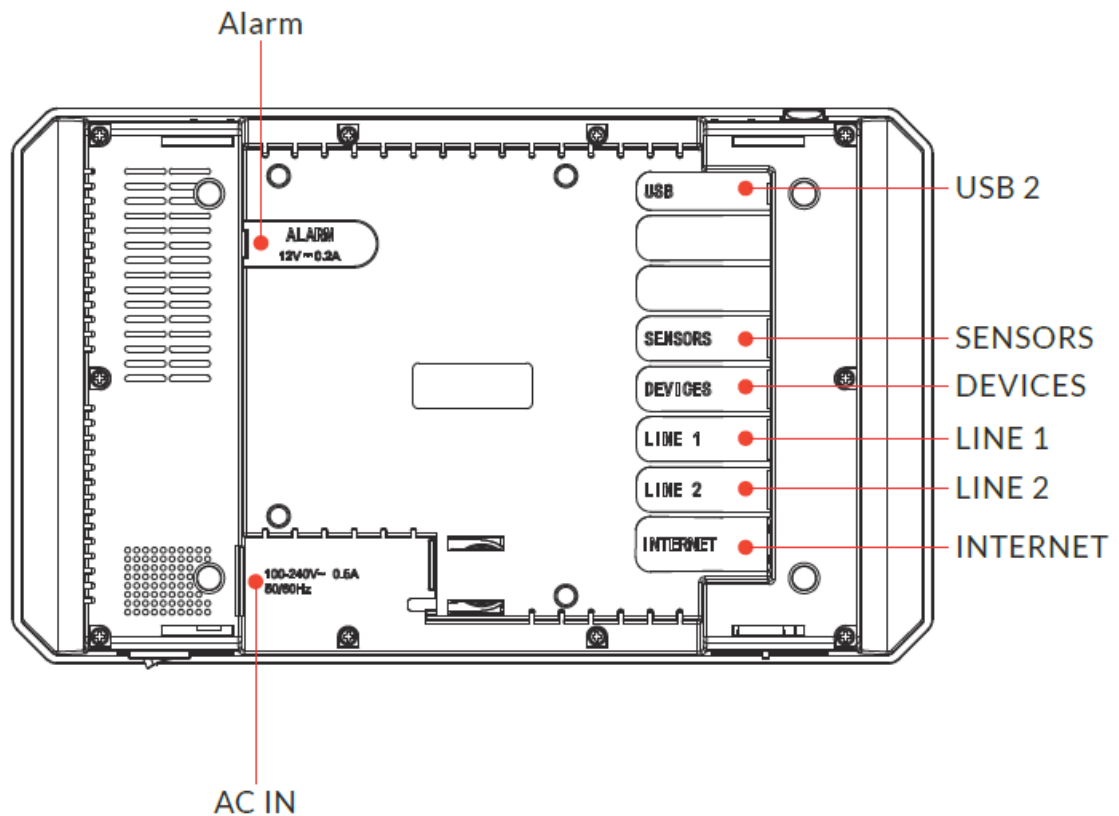
3. Slide the controller from right to left until it “locks” into place.



4. To release the controller, press on the lock and slide the controller to the right.



5. Connect power cord, sensors, device stations, and internet cable to each port accordingly.



6. Scan the QR code below to view the online tutorial video.



GENERAL INFORMATION

WARRANTY

- TrolMaster only uses high quality components under normal. operating conditions, the mechanical and electronic components are covered by a three-year warranty from the original date of purchase.
- For service, return the HCS-2 Hydro-X Pro Environment Control System. System in the original packaging to your shop with the original sales receipt.
- Components that are excluded from warranty are components that have failed due to abnormal usage.
- In the case of defects of the HCS-2 Hydro-X Pro Environment Control System, the controller will either be replaced or repaired using new or reconditioned products or parts.
- If the Controller is replaced this limited warranty shall apply to the replacement product for the remaining initial warranty period, i.e., (three) 3 years from the date of purchase of the original product.

RETURNS

- All returns need to be done in the original packaging to avoid damages of the product during transport.
- Defective products need to be returned to the factory or service shop for repair.
- Non-professionals DO NOT open the cabinet to prevent electric shock or damage to the equipment.

REGISTRATION

- TrolMaster Agro Instruments Co., Ltd. will occasionally release updated firmware for the HCS-2 Hydro-X Pro Environment Control System.
- By registering your HCS-2 Hydro-X Pro Environment Control System on our website www.trolmaster.com, we can notify you when an update is available.
- We will not sell, rent or share your personal information.



WARNING

- DO NOT allow the HCS-2 Hydro-X Pro Environment Control System to be exposed to water or excessive heat.
- DO NOT open or attempt to repair or disassemble the controller, as there are no user-serviceable parts inside.
- Opening the controller will void the warranty.
- If the surface of HCS-2 Hydro-X Pro Environment Control System is dirty, wipe it with a dry towel.
- The HCS-2 Hydro-X Pro Environment Control System operates under natural ventilation conditions.
- Where the mains plug or an appliance coupler is used as the disconnect device, the disconnect device shall remain readily operable.

SPECIFICATIONS

| | |
|---|--|
| Input Voltage | 100-240V~, 50/60Hz, 0.5A |
| Tension D'entrée | 100-240V~, 50/60Hz, 0.5A |
| Certifications | ETL / FCC |
| Certifications | ETL / FCC |
| Degree of Ingress Protection | IP20 |
| Indice de protection | IP20 |
| Max Number of HID Fixtures | 256*2 |
| Max Distance to Device to be connected | 1000 meters |
| All-in-1 Pro Sensor(MBS-PRO) Full Spectrum Quantum Sensor(MBS-PAR) Nater Cont ent Sensor(WCS-1) | Maximum 50 sensors in combination |
| Device Stations | Maximum 50 devices in combination |
| Light Intensity Range | 0-2000PPFD |
| Moist Range | 0-100% |
| Temperature Range | 32-138.2°F |
| Temperature Accuracy | ±0.36°F |
| Temperature Deadband | 3°F (1°F~15°F) |
| Humidity Range | 5.95% |
| Humidity Accuracy | ± 5% |
| Humidity Deadband | 3% (1%~15%) |
| CO2 Range | 0-2500 PPM |
| CO2 Accuracy | ±(5%+30) PPM |
| CO2 Deadband | 50ppm (10ppm~250ppm) |
| Working Environments | Temperature 31-104°F Humidity ≤ 90% |

ENVIRONMENTAL AND DISPOSAL CONCERNS

THIS PRODUCT CONTAINS A BATTERY AND OTHER COMPONENTS WHICH MUST BE DISPOSED OF PROPERLY.

This symbol displayed on a product, its accessories, or its packaging indicates that this product may not be discarded as household waste. Dispose of the equipment through a recycling center that handles electronics and electrical appliances. By disposing of the equipment in the proper and lawful way you will be helping to prevent

possible damage to the environment and risk to public health.




CONTACT

- For any issues or concerns with our products, DO NOT return them to the store.
- Please contact our tech support department at support@trolmaster.com or call [877-420-9876](tel:877-420-9876).
- September 2024 ©2024 TrolMaster™ All rights reserved.

FAQ

- **How should I dispose of the product?**
 - This product contains a battery and other components that must be disposed of properly. Please follow local regulations for electronic waste disposal.
- **Can non-professionals open the cabinet for maintenance?**
 - No, non-professionals should not open the cabinet to prevent electric shock or damage to the equipment. Please return defective products to the factory or service shop for repair.

Documents / Resources

| | |
|---|--|
|  | TrolMaster HCS-2 Hydro-X Pro Control System [pdf] User Manual HCS-2, HCS-2 Hydro-X Pro Control System, Hydro-X Pro Control System, Control System |
|---|--|

References

- [M trolmaster.com](https://www.trolmaster.com)
- [User Manual](#)

[Manuals+](#), [Privacy Policy](#)

This website is an independent publication and is neither affiliated with nor endorsed by any of the trademark owners. The "Bluetooth®" word mark and logos are registered trademarks owned by Bluetooth SIG, Inc. The "Wi-Fi®" word mark and logos are registered trademarks owned by the Wi-Fi Alliance. Any use of these marks on this website does not imply any affiliation with or endorsement.