



## TRIWin Windows Hello USB Fingerprint Dongle User Manual

[Home](#) » [TRIWin](#) » TRIWin Windows Hello USB Fingerprint Dongle User Manual 

### Contents

- [1 TRIWin Windows Hello USB Fingerprint Dongle](#)
  - [1.1 Step 2](#)
- [2 Documents / Resources](#)
- [3 Related Posts](#)

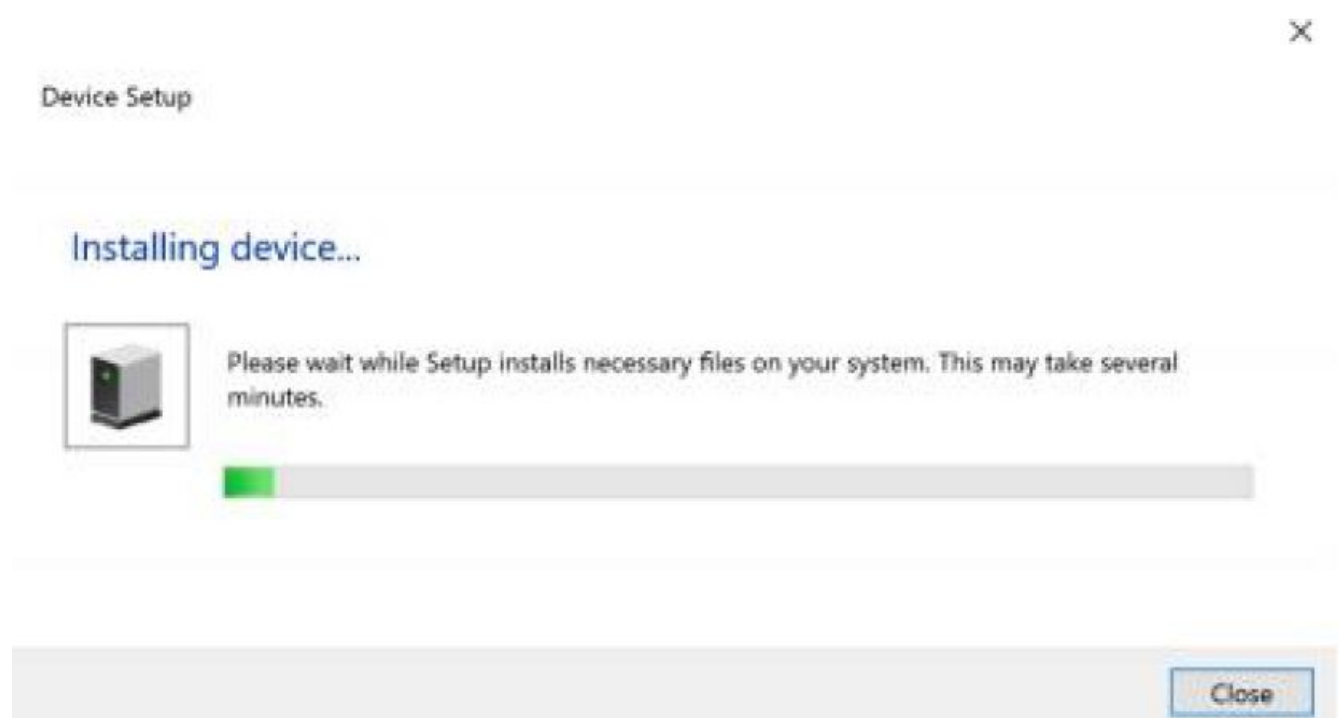


**TRIWin Windows Hello USB Fingerprint Dongle**



First of all, thanks for choosing our USB fingerprint dongle. There are mainly 3 steps as below before it is ready to work:

### Step 1



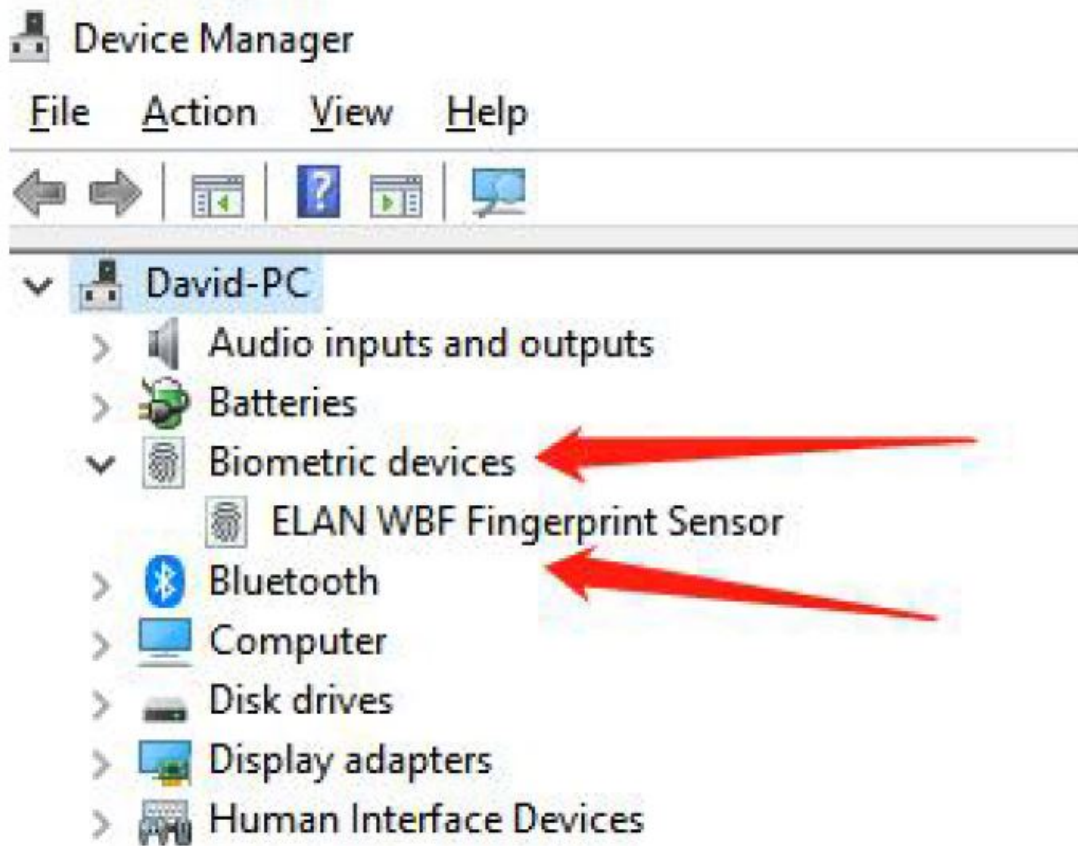
Kindly note the Windows Hello Dongle supports Windows 10 32/64 Bits OS only

If your Windows 10 Version is 1703 (Windows 10 Redstone) or even newer, the driver is not needed. When you plug the dongle to the computer, it will download and install the driver from the Windows update server automatically as below with internet access.

This step may take around 1-2 Minutes depending on your internet speed.

If not, Let's move to step 2

## Step 2



1. Find Device Manager in windows 10 in the control panel/settings
2. Find "Biometric devices"—XXX fingerprint Sensor, right-click the mouse as below photo:
3. Choose Update driver, it appears the below, choose "search automatically for updated driver software", It will automatically download and install the driver till finished Searching and installing the driver for the dongle as below:

## How do you want to search for drivers?

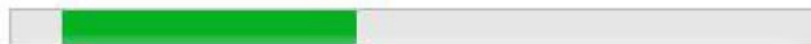
### → Search automatically for updated driver software

Windows will search your computer and the Internet for the latest driver software for your device, unless you've disabled this feature in your device installation settings.

### → Browse my computer for driver software

Locate and install driver software manually.

## Searching online for software...



## The best driver software for your device is already installed

Windows has determined the driver software for your device is up to date.

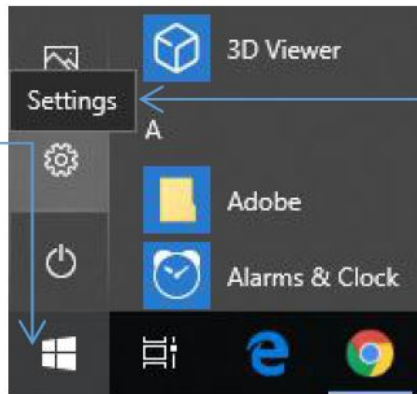


Touch Fingerprint sensor

If the automatic installation of drive failed, please contact the after-sale service for Driver and move to "Browse my computer for driver software" and install it manually.

### Step 3

- 1: Click  icon in the bottom left of Windows 10, and then choose “**Settings**”



1. Click icon in the bottom left of Windows 10, and then choose “Settings”
2. Choose Accounts:



### System

Display, sound, notifications,  
power



### Devices

Bluetooth, printers, mouse



### Apps

Uninstall, defaults, optional  
features



### Accounts

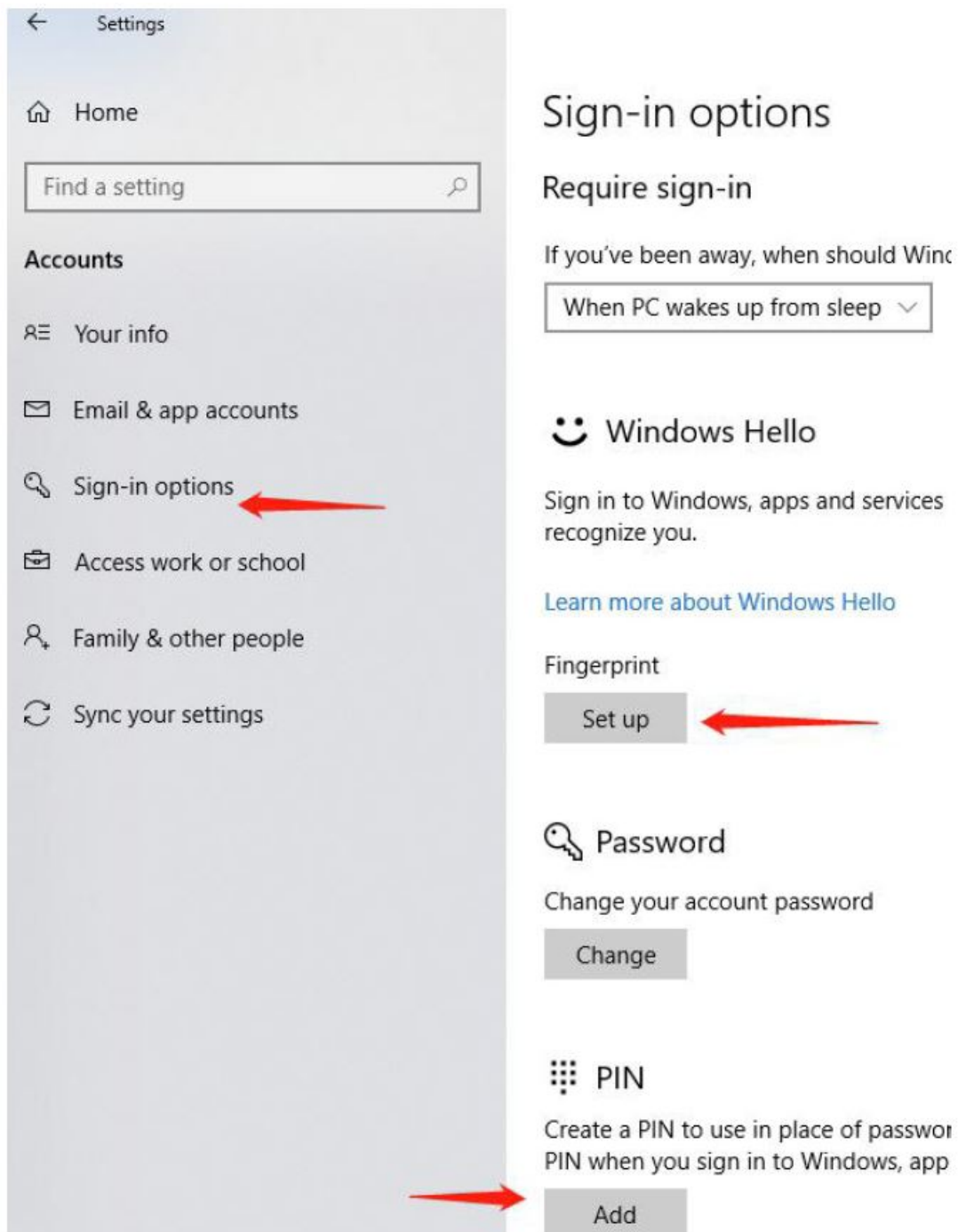
Your accounts, email, sync,  
work, family



3. Choose below Sign-in Options, Add a pin code and then add your fingerprints (it supports up to 10pcs), follow the windows instructions to complete the settings


#### **Note:**

1. Please try to register your fingerprints from different angles for a better and faster recognition per Microsoft's suggestions
2. Please make sure your fingers are clean and tidy during the enrollment.



Wish you a happy experience and a sweet memory of using this product

## Documents / Resources

	<p><a href="#">TRIWin Windows Hello USB Fingerprint Dongle</a> [pdf] User Manual Windows Hello, USB Fingerprint Dongle, Windows Hello USB Fingerprint Dongle, Fingerprint Dongle, Dongle</p>
---	--