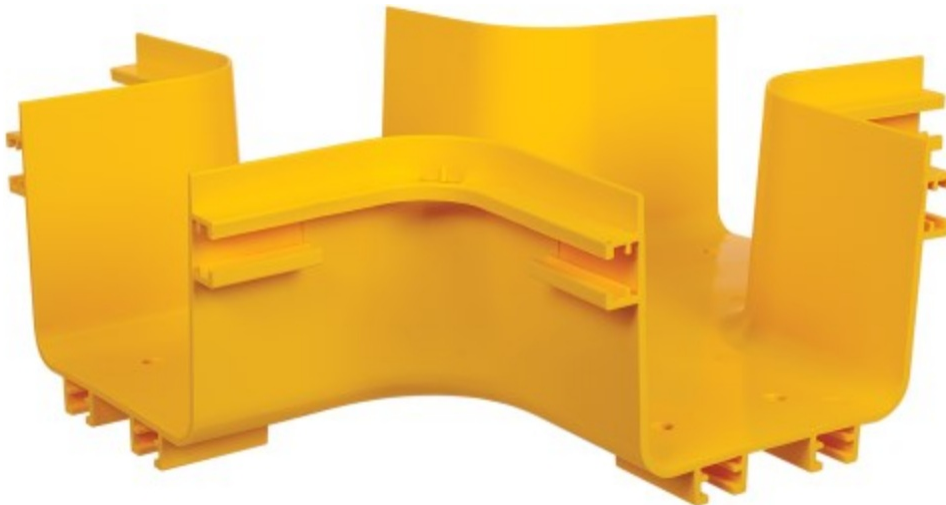




TRIPP LITE SRFC5JUNT4 4-Way Junction for Fiber Routing System User Guide

[Home](#) » [Tripp Lite](#) » TRIPP LITE SRFC5JUNT4 4-Way Junction for Fiber Routing System User Guide 

TRIPP LITE SRFC5JUNT4 4-Way Junction for Fiber Routing System User Guide

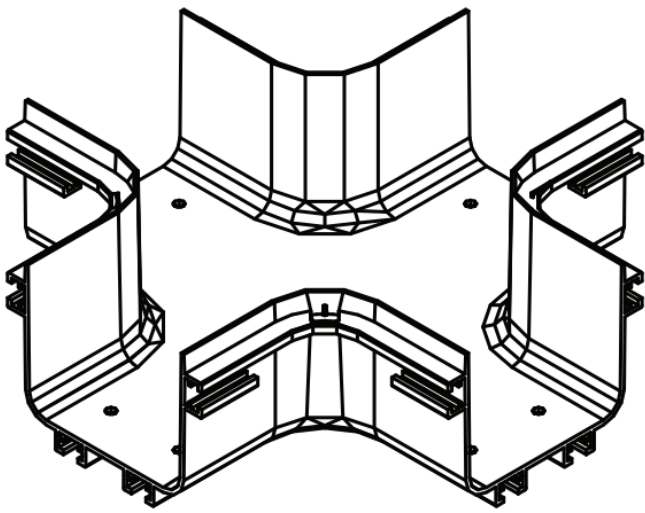


Contents

- [1 Parts List](#)
- [2 Installation](#)
- [3 Documents / Resources](#)
 - [3.1 References](#)
- [4 Related Posts](#)

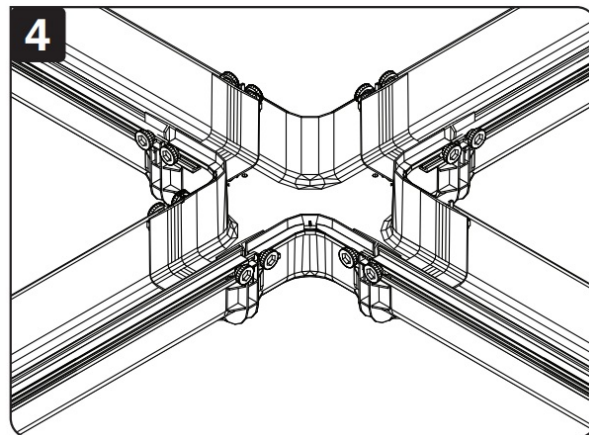
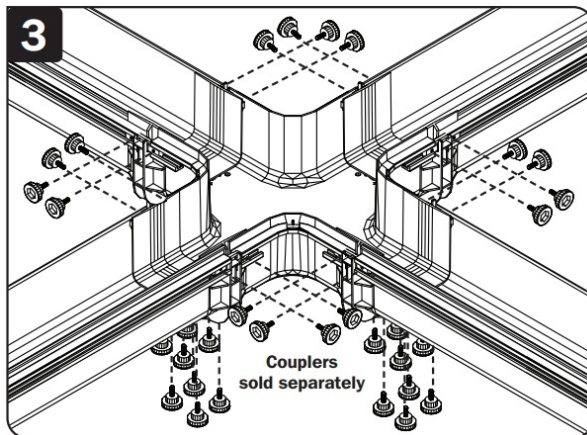
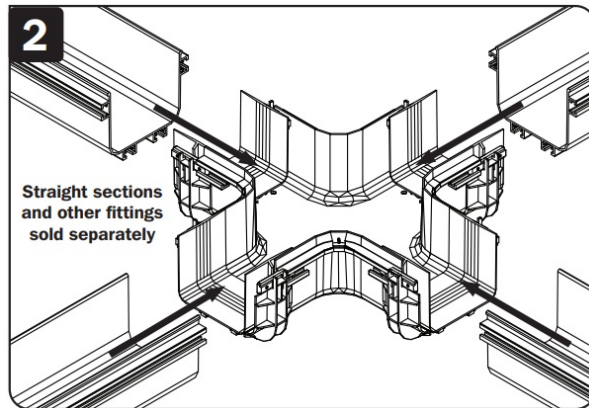
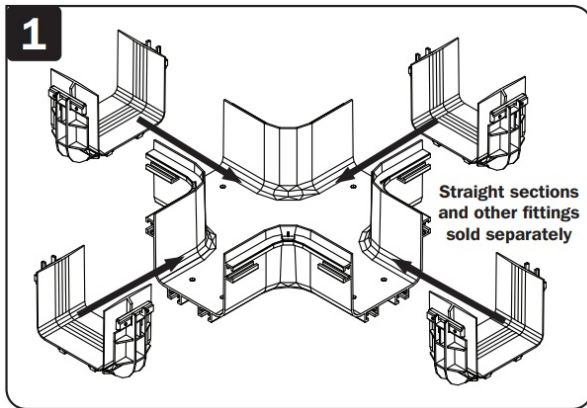
Parts List

4-Way Junction, x1



Installation

Attaches to channels and/or fittings to create a horizontal 4-way cross intersection with 2 exits. (Requires 4 toolless couplers, sold separately.) Tighten screws by hand, no tools needed.



Tripp Lite has a policy of continuous improvement. Specifications are subject to change without notice. Photos and illustrations may differ slightly from actual products.

WARRANTY REGISTRATION

Register your product today and be automatically entered to win an ISOBAR surge protector in our monthly drawing!

[tripplite.com/warranty](https://www.tripplite.com/warranty)




1111 W. 35th Street, Chicago, IL 60609 USA

triplite.com/support

Copyright © 2020 Tripp Lite. All rights reserved.



Documents / Resources

	<p>TRIPP LITE SRFC5JUNT4 4-Way Junction for Fiber Routing System [pdf] User Guide SRFC5JUNT4 4-Way Junction for Fiber Routing System, SRFC5JUNT4, 4-Way Junction for Fiber Routing System, Junction for Fiber Routing System, Fiber Routing System, Routing System, System</p>
---	--

References

- [User Manual](#)

[Manuals+](#), [Privacy Policy](#)

This website is an independent publication and is neither affiliated with nor endorsed by any of the trademark owners. The "Bluetooth®" word mark and logos are registered trademarks owned by Bluetooth SIG, Inc. The "Wi-Fi®" word mark and logos are registered trademarks owned by the Wi-Fi Alliance. Any use of these marks on this website does not imply any affiliation with or endorsement.