



[Home](#) » [Tripp Lite](#) » **TRIPP-LITE SMART1500LCDT Lite Series 1500VA 900W Line Interactive AVR**
Instruction Manual 

Contents [[hide](#)]

- [1 TRIPP-LITE SMART1500LCDT Lite Series 1500VA 900W Line Interactive AVR](#)
- [2 IMPORTANT INFORMATION](#)
- [3 PROCEDURES](#)
- [4 CONTACT US](#)
- [5 Documents / Resources](#)
 - [5.1 References](#)



TRIPP-LITE SMART1500LCDT Lite Series 1500VA 900W Line Interactive AVR



IMPORTANT INFORMATION

Observe Proper Precautions

- Batteries can present a risk of electrical shock and burn from high short-circuit currents. Do not dispose of batteries in case of a fire. Do not open the UPS or

batteries. Do not short or bridge the battery terminals with any object.

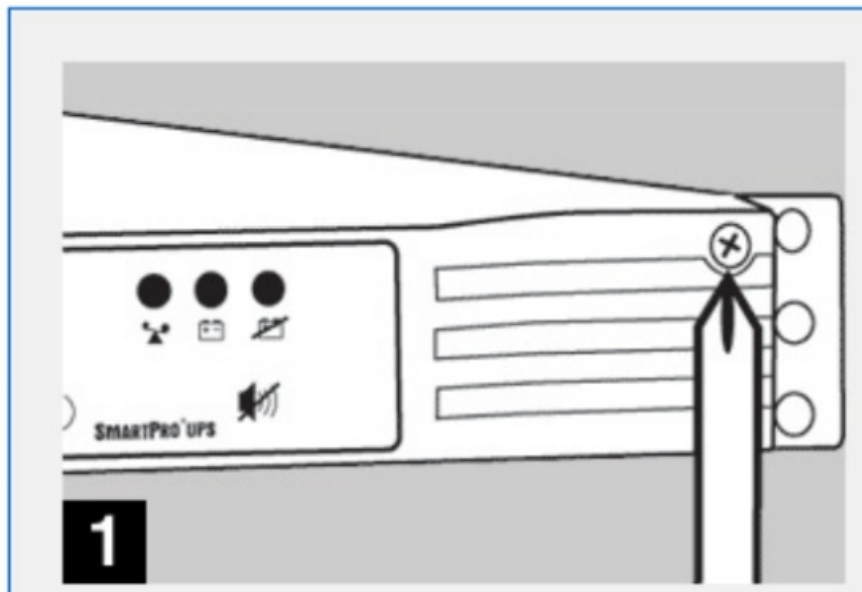
- During hot-swap battery replacement, the UPS will not provide backup power in the event of a blackout or other power interruptions.
- Do not operate UPS without the correct batteries.



PROCEDURES

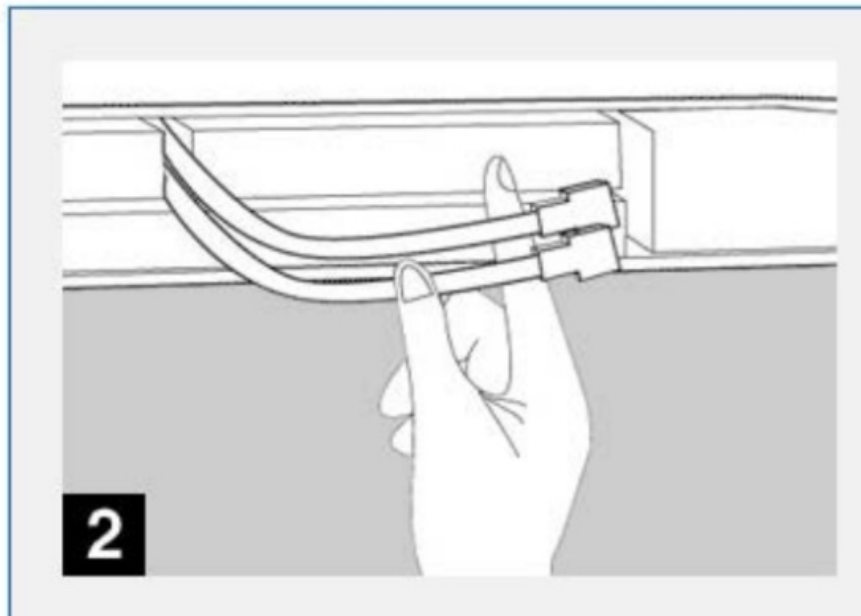
Step 1

Using a Phillips screwdriver, remove the front panel's 4 screws located on each corner.



Step 2

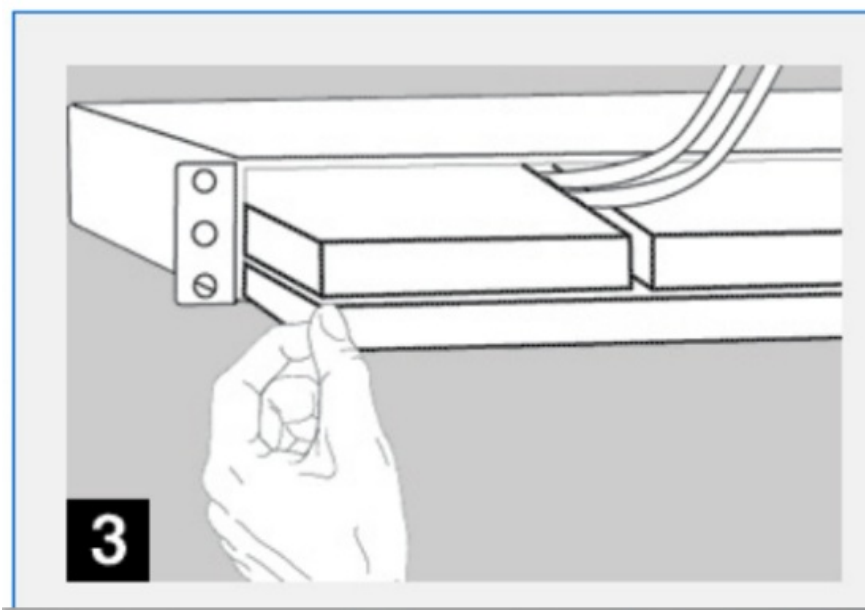
Disconnect the batteries from the unit.



Step 3

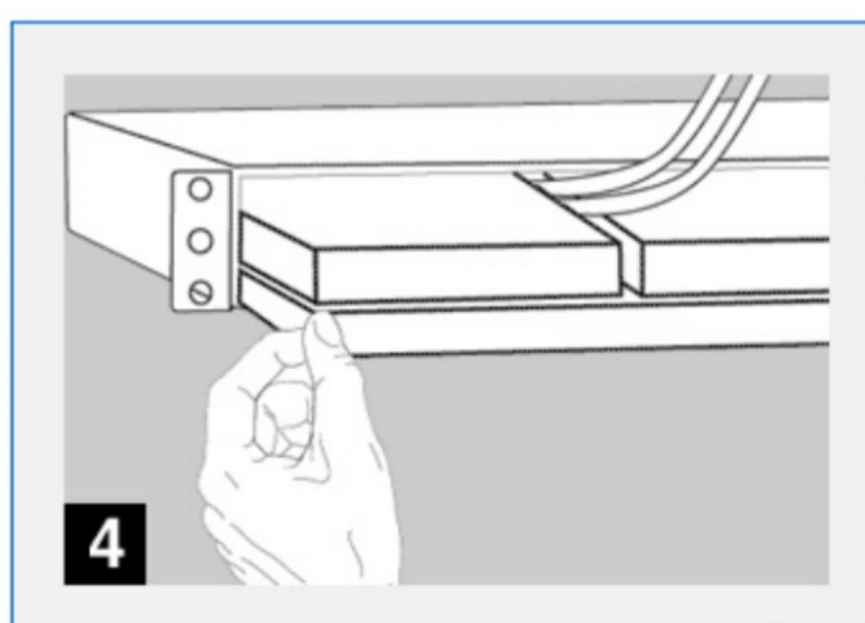
Remove and properly dispose of old batteries.

Note: The batteries are recyclable. For more information on battery recycling, you may check with a battery recycler in your area or contact Battery Solutions, Inc. (7266 Kensington Road, Brighton, Michigan 48116) by phoning 1 [800-852-8127](tel:800-852-8127) or visiting their website at www.batteryrecycling.com



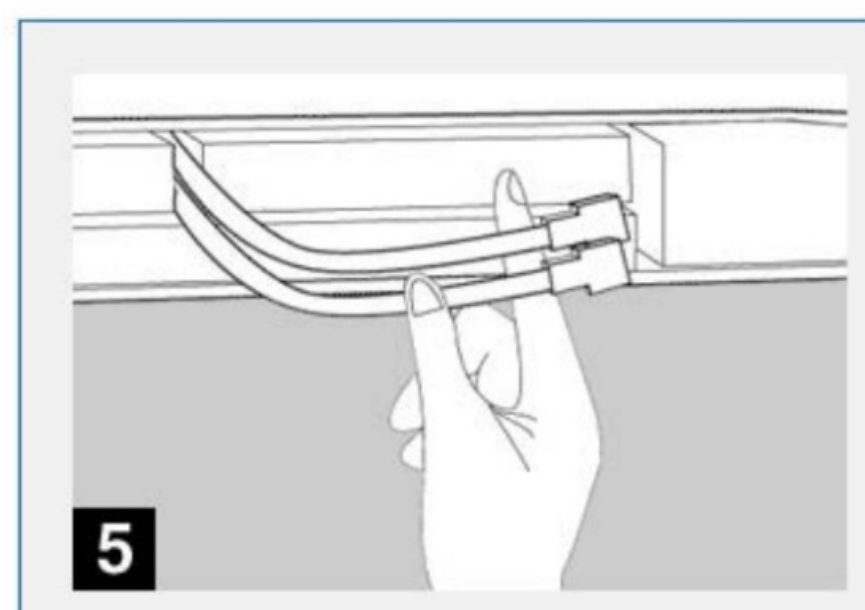
Step 4

Install new batteries.



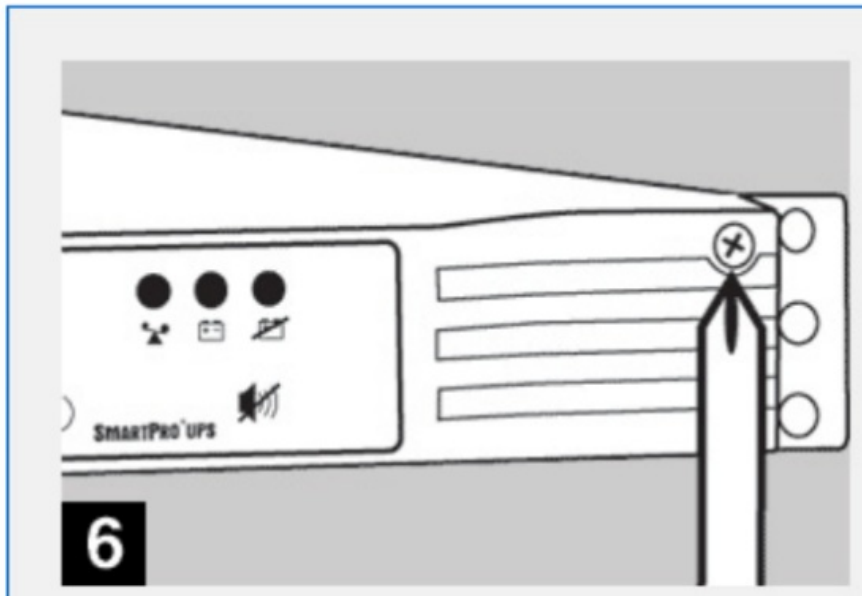
Step 5

Reconnect batteries by attaching the connectors from the unit to the batteries (black-to-black and red-to-red).



Step 6

Re-attach the front panel and its 4 screws using a Phillips screwdriver.




CONTACT US

For More Information

- Visit our website www.tripplite.com
- Contact our Tech Support Team at 773.869.1234.

Documents / Resources

	<p>TRIPP-LITE SMART1500LCDT Lite Series 1500VA 900W Line Interactive AVR [pdf] Instruction Manual</p> <p>SMART1500LCDT Lite Series 1500VA 900W Line Interactive AVR, SMA RT1500LCDT, Lite Series 1500VA 900W Line Interactive AVR, 900W Line Interactive AVR, Interactive AVR</p>
---	---

References

- [User Manual](#)

Tripp

Lite

900W Line Interactive AVR, Interactive AVR, Lite Series 1500VA 900W Line Interactive AVR, SMART1500LCDT, SMART1500LCDT Lite Series 1500VA 900W Line Interactive AVR, Tripp Lite

Leave a comment

Your email address will not be published. Required fields are marked *

Comment *

Name

Email

Website

☐ Save my name, email, and website in this browser for the next time I comment.

Post Comment

Search:

e.g. whirlpool wrf535swhz

Search

[Manuals+](#) | [Upload](#) | [Deep Search](#) | [Privacy Policy](#) | [@manuals.plus](#) | [YouTube](#)

This website is an independent publication and is neither affiliated with nor endorsed by any of the trademark owners. The "Bluetooth®" word mark and logos are registered trademarks owned by Bluetooth SIG, Inc. The "Wi-Fi®" word mark and logos are registered trademarks owned by the Wi-Fi Alliance. Any use of these marks on this website does not imply any affiliation with or endorsement.