



[Home](#) » [Tripp Lite](#) » **TRIPP LITE N254 1U Shielded Cat6a Feed Through Patch Panel Installation Guide** 



Installation Instructions

N254-024-SH-6A

N254-048-SH-6A

1U Shielded Cat6a Feed-Through Patch Panel

Purchased product may differ from image.

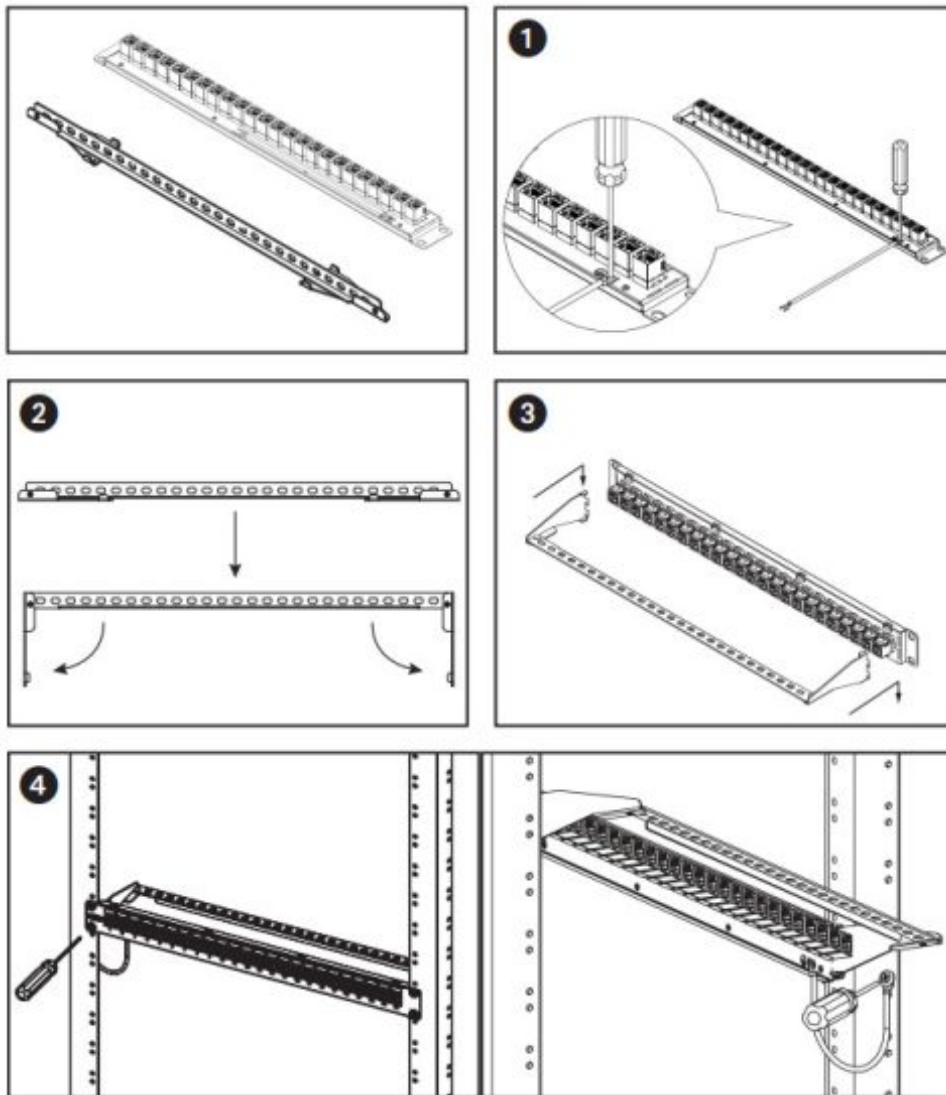
Contents [[hide](#)]

[1 Installation](#)

[2 Documents / Resources](#)

[2.1 References](#)

Installation



1. Connect the grounding lug to the patch panel.
2. Unfold the rear cable manager.
3. Assemble the rear cable manager.
4. Connect the patch panel and the grounding lug to the rack.

EAT•N

Powering Business Worldwide

Eaton

1000 Eaton Boulevard

Cleveland, OH 44122

United States

[Eaton.com](https://www.eaton.com)

© 2024 Eaton

All Rights Reserved


Publication No. 24-12-134 / 93-34C5_RevB

December 2024

Eaton is a registered trademark.

All trademarks are property
of their respective owners.

Documents / Resources

	TRIPP LITE N254 1U Shielded Cat6a Feed Through Patch Panel [pdf] Installation Guide N254-024-SH-6A, N254-048-SH-6A, N254 1U Shielded Cat6a Feed Through Patch Panel, 1U Shielded Cat6a Feed Through Patch Panel, Cat6a Feed Through Patch Panel, Through Patch Panel, Patch Panel
---	--

References

- [User Manual](#)

Tripp

Lite

1U Shielded Cat6a Feed Through Patch Panel, Cat6a Feed Through Patch Panel, N254 1U Shielded Cat6a Feed Through Patch Panel, N254-024-SH-6A, N254-048-SH-6A, Patch Panel, Through Patch Panel, Tripp Lite

Leave a comment

Your email address will not be published. Required fields are marked *

Comment *

Name

Email

Website

☐ Save my name, email, and website in this browser for the next time I comment.

Post Comment

Search:

e.g. whirlpool wrf535swhz

Search

[Manuals+](#) | [Upload](#) | [Deep Search](#) | [Privacy Policy](#) | [@manuals.plus](#) | [YouTube](#)

This website is an independent publication and is neither affiliated with nor endorsed by any of the trademark owners. The "Bluetooth®" word mark and logos are registered trademarks owned by Bluetooth SIG, Inc. The "Wi-Fi®" word mark and logos are registered trademarks owned by the Wi-Fi Alliance. Any use of these marks on this website does not imply any affiliation with or endorsement.