



TRIPP LITE B006-VU4-1 4 Port PS 2 USB VGA KVM Switch User Guide

[Home](#) » [Tripp Lite](#) » TRIPP LITE B006-VU4-1 4 Port PS 2 USB VGA KVM Switch User Guide 



**Quick Start Guide
4-Port PS/2-USB
VGA KVM Switch
Model: B006-VU4-1**

Contents

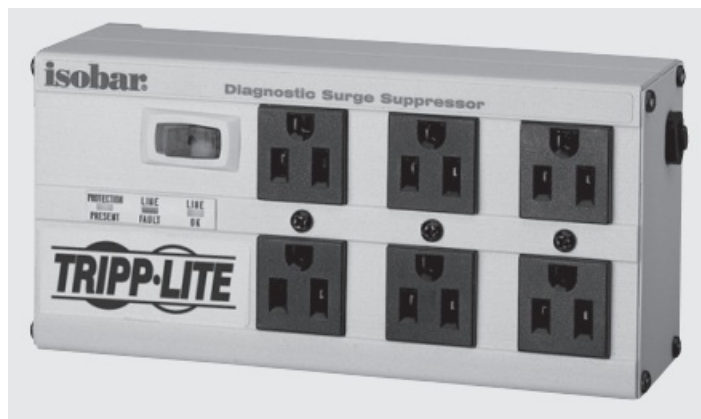
- [1 B006-VU4-1 4 Port PS 2 USB VGA KVM Switch](#)
- [2 Package Contents](#)
- [3 System Requirements](#)
- [4 Hardware Overview](#)
- [5 Installation](#)
- [6 Operation](#)
- [7 Specifications](#)
- [8 Warranty and Product Registration](#)
- [9 Documents / Resources](#)
 - [9.1 References](#)

B006-VU4-1 4 Port PS 2 USB VGA KVM Switch



WARRANTY REGISTRATION

Register your product today and be automatically entered to win an ISOBAR® surge protector in our monthly drawing!



tripplite.com/warranty

Package Contents

- B006-VU4-1 4-Port PS/2-USB VGA KVM Switch
- Quick Start Guide

System Requirements

Console

- VGA compatible monitor capable of the highest possible resolution
- USB or PS/2 mouse

- USB or PS/2 keyboard

Computers

The following equipment must be available on each computer:

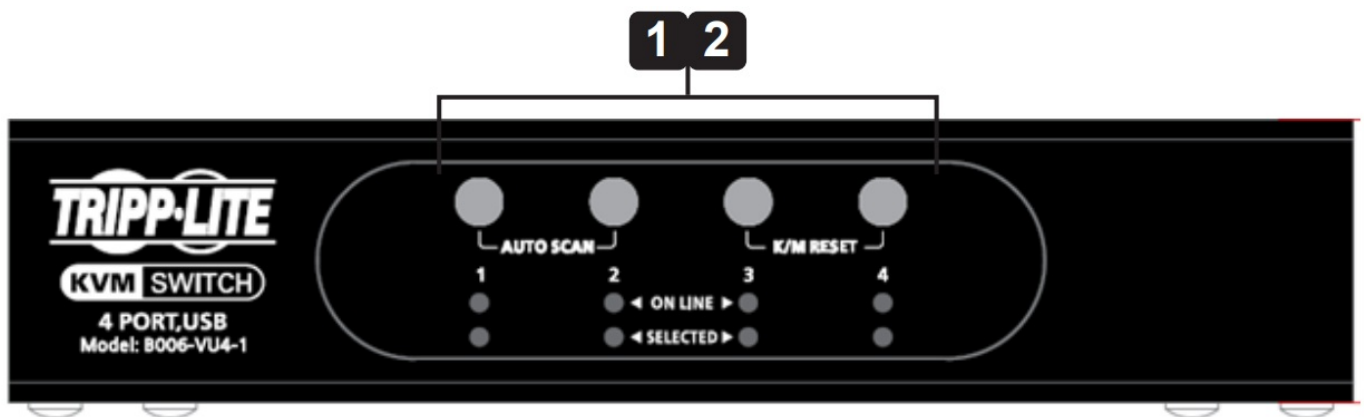
- VGA port
- USB-A port or PS/2 port

Cables

Only KVM cable sets specifically designed to work with this switch may be used to link to the computers. Purchase separately compatible Tripp Lite P778 series cables.

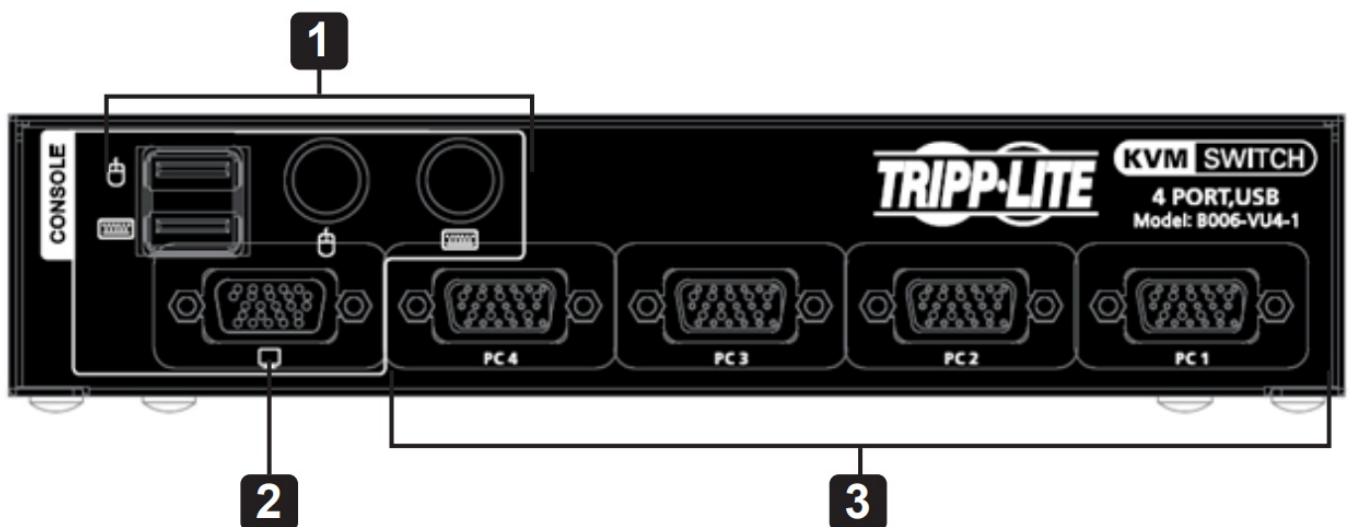
Hardware Overview

Front



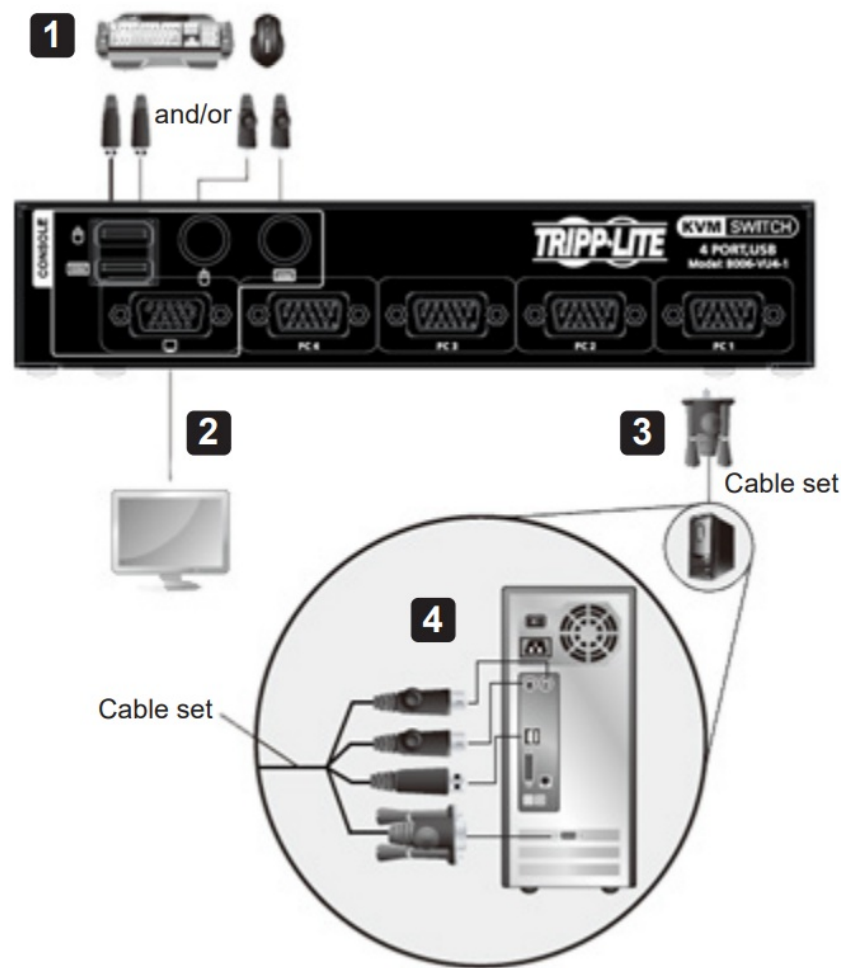
1. Port Selection Pushbuttons
2. Port LEDs

Rear



1. Console Keyboard and Mouse Ports
2. Console Monitor Port

Installation



To prevent damage to your installation from power surges or static electricity, it is important that all connected devices are properly grounded.

1. Plug your keyboard and mouse into the USB or PS/2 console ports located on the unit's rear panel.
2. Plug your console monitor into the VGA console port located in the unit's rear panel and power on the monitor.
3. Using the KVM cable set, plug the SPHD connector into any available KVM port section of the switch.
4. At the other end of the cable, plug the USB or PS/2 and VGA connectors into their respective ports on the computer.

Note: If you are using a combo console – USB mouse and PS/2 keyboard, for example – plug in both the USB and PS/2 connectors.

5. Turn on the power to the computers.

Operation

There are three convenient methods to access the computers:

Manual – Pressing the port selection pushbuttons located on the unit's front panel

Mouse – Clicking the scroll wheel of the USB mouse

Hotkey – Entering combinations from the keyboard

Manual Port Selection

- Press and release a port selection pushbutton to bring the KVM focus to the computer attached to its corresponding port. The Port LED will illuminate bright orange.
- Press and hold port selection pushbutton 1 and 2 for more than 2 seconds to start Auto Scan Mode.
- Press and release either port selection pushbutton to stop Auto Scan Mode. The KVM focus will shift to the computer attached to the corresponding port of the switch you pressed.
- Press port selection pushbuttons 3 and 4 simultaneously for 2 seconds to perform a keyboard and mouse reset.

Mouse Port Switching

B006-VU4-1 supports the latest in mouse port-switching – simply doubleclick the scroll wheel of your USB mouse to cycle through the ports.

Notes:

- This feature is only supported by USB 3-key scroll wheel mice.
- The default setting is off.
- This feature is only supported when Mouse Emulation is enabled.

Hotkey Operation

B006-VU4-1 provides an extensive, easy-to-use, hotkey function that makes it convenient to control and configure your KVM installation from the keyboard.

Port Switching

All port switches begin with tapping the Scroll Lock key twice. The tables below describe the actions that each combination performs.

Note: If using the Scroll Lock key conflicts with other programs running on the computer, the Ctrl key can be used instead.

Port Cycling

Hotkey	Action
[Scroll Lock] [Scroll Lock] [Enter]	Brings the KVM focus from the port that currently has the KVM focus to the next port on the installation. 1 to 2; 2 to 3; 3 to 4; 4 to 1.

Port Access

Hotkey	Action
[Scroll Lock] [Scroll Lock] [n] [Enter]	Brings the KVM, USB, and audio focus to the computer attached to the port corresponding to the specified Port ID.

Note: [n] represents the computer's Port ID number (1, 2, 3 or 4). Replace [n] with the appropriate Port ID when entering hotkey combinations.

Hotkey Setting Mode

To invoke Hotkey Mode:

1. Press and hold [Num Lock].
2. Press and release [-].
3. Release [Num Lock].

Hotkey Setting Mode Table

Key	Function
[F1]	Resets keyboard and mouse under operating systems that do not support USB 2.0.
[F2]	Enables Mac keyboard emulation.
[F3]	Enables Sun keyboard emulation.
[F4]	Prints the switch's current settings via text editor or word processor.
[F5]	Performs a reset on all USB devices.
[F6][nn] [Enter]	Sets the keyboard language layout. Note: nn is a 2-digit number that represents one of the following keyboard language codes: US English 33; French 08; Japanese 15.
[F10]	Auto detects the keyboard operating platform.
[E1]	Toggles the beeper on/off.
[D]	Display resolution optimization and boot-up display enhancement for faster switching.
[H]	Toggles the Hotkey Setting Mode Activation Command between [Num Lock] [-] and [Ctrl] [F12].
[M]	Enables/disables mouse emulation.
[N]	Enables/disables keyboard emulation.
[R] [Enter]	Resets the hotkey settings to their default status.
[T]	Toggles between the default [Scroll Lock] [Scroll Lock] and alternate [Ctrl] [Ctrl] port switching keys.
[u] [p] [g] [r] [a] [d] [e] [Enter]	Invoke Firmware Upgrade Mode.
[W]	Enables/disables mouse
[X][Enter]	Enables/disables the port switching keys.

* When keyboard emulation is off, the [m], [w], [F2], [F3], [F10],[F4], [F5], and [F6] hotkeys are disabled.

Hotkey Default Settings

Setting	Hotkey	Default
Port Switching	Fri	[Scroll Lock] [Scroll Lock]
Invoking Hotkey Mode	[H]	[Number Lock] [-]
Auto Scan Interval	[Scroll Lock] [Scroll Lock] [A] [Enter]	5 seconds
Keyboard Operating Platform	[F10]	PC-compatible
Keyboard Emulation	[N]	Enabled
Mouse Emulation	[M]	Enabled
Mouse Port-Switching	[W]	Disabled
Display Resolution Optimization	[D]	
Port Switching Keys (On / Off)	[X][Enter]	Enabled
Beeper	[B]	Enabled
Keyboard Language	[F6] [nn] [Enter] Note: nn is the language number.	English

Specifications

Function			B006-VU4-1
Computer Connections			4
Port Selection			Front Panel Pushbuttons, Hotkeys, USB Mouse
Connectors	Console Ports	Keyboard	1 x USB Type-A Female (Black), 1 x 6-Pin Mini-DIN Female (Purple)
		Video	1 x HDB-15 Female (Blue)
		Mouse	1 x USB Type-A Female (Black), 1 x 6-Pin Mini-DIN Female (Purple)
	KVM Ports		4 x HD-18 Female (Yellow)
LEDs	On-Line		4 (Orange)
	Selected		4 (Green)
Emulation	Keyboard /Mouse		USB
Video			2048 x 1536; DDC2B
Scan Interval			3, 5, 10, 20 sec. (default: 5 sec.)
Power Consumption			DC 5V, 1.2W

Warranty and Product Registration

3-YEAR LIMITED WARRANTY

Seller warrants this product, if used in accordance with all applicable instructions, to be free from original defects in material and workmanship for a period of three (3) years from the date of initial purchase. If the product should prove defective in material or workmanship within that period, Seller will repair or replace the product, in its sole

discretion. Service under this Warranty can only be obtained by your delivering or shipping the product (with all shipping or delivery charges prepaid) to: Tripp Lite; 1111 W. 35th Street; Chicago IL 60609; USA. Seller will pay return shipping charges. Visit tripplite.com/support before sending any equipment back for repair.

THIS WARRANTY DOES NOT APPLY TO NORMAL WEAR OR TO DAMAGE RESULTING FROM ACCIDENT, MISUSE, ABUSE OR NEGLIGENCE. SELLER MAKES NO EXPRESS WARRANTIES OTHER THAN THE WARRANTY EXPRESSLY SET FORTH HEREIN.

EXCEPT TO THE EXTENT PROHIBITED BY APPLICABLE LAW, ALL IMPLIED WARRANTIES, INCLUDING ALL WARRANTIES OF MERCHANTABILITY OR FITNESS, ARE LIMITED IN DURATION TO THE WARRANTY PERIOD SET FORTH ABOVE; AND THIS WARRANTY EXPRESSLY EXCLUDES ALL INCIDENTAL AND CONSEQUENTIAL DAMAGES. (Some states do not allow limitations on how long an implied warranty lasts, and some states do not allow the exclusion or limitation of incidental or consequential damages, so the above limitations or exclusions may not apply to you. This Warranty gives you specific legal rights, and you may have other rights which vary from jurisdiction to jurisdiction). Tripp Lite; 1111 W. 35th Street; Chicago IL 60609; USA

WARNING: The individual user should take care to determine prior to use whether this device is suitable, adequate or safe for the use intended. Since individual applications are subject to great variation, the manufacturer makes no representation or warranty as to the suitability or fitness of these devices for any specific application.

PRODUCT REGISTRATION

Visit tripplite.com/warranty today to register your new Tripp Lite product. You'll be automatically entered into a drawing for a chance to win a FREE Tripp Lite product!*

*No purchase necessary. Void where prohibited. Some restrictions apply. See website for details.

Use of this equipment in life support applications where failure of this equipment can reasonably be expected to cause the failure of the life support equipment or to significantly affect its safety or effectiveness is not recommended. Regulatory

Compliance Identification Numbers

For the purpose of regulatory compliance certifications and identification, your Tripp Lite product has been assigned a unique series number. The series number can be found on the product nameplate label, along with all required approval markings and information.

When requesting compliance information for this product, always refer to the series number. The series number should not be confused with the marking name or model number of the product

FCC Notice, Class B

This device complies with part 15 of the FCC Rules. Operation is subject to the following two conditions: (1) This device may not cause harmful interference, and (2) this device must accept any interference received, including interference that may cause undesired operation.

Note: This equipment has been tested and found to comply with the limits for a Class B digital device, pursuant to part 15 of the FCC Rules. These limits are designed to provide reasonable protection against harmful interference in a residential installation.

This equipment generates, uses and can radiate radio frequency energy and, if not installed and used in accordance with the instructions, may cause harmful interference to radio communications. However, there is no guarantee that interference will not occur

in a particular installation. If this equipment does cause harmful interference to radio or television reception, which can be determined by turning the equipment off and on, the user is encouraged to try to correct the interference by one or more of the following measures:

- Reorient or relocate the receiving antenna.
- Increase the separation between the equipment and receiver.
- Connect the equipment into an outlet on a circuit different from that to which the receiver is connected.
- Consult the dealer or an experienced radio/TV technician for help. Any changes or modifications to this equipment not expressly approved by Tripp Lite could void the user's authority to operate this equipment.

WEEE Compliance Information for Tripp Lite Customers and Recyclers (European Union)



Under the Waste Electrical and Electronic Equipment (WEEE) Directive and implementing regulations,

when customers buy new electrical and electronic equipment from Tripp Lite they are entitled to:


- Send old equipment for recycling on a one-for-one, like-for-like basis (this varies depending on the country)
- Send the new equipment back for recycling when this ultimately becomes waste.

Tripp Lite has a policy of continuous improvement. Specifications are subject to change without notice. Photos and illustrations may differ slightly from actual products.



1111 W. 35th Street, Chicago, IL 60609 USA • [tripplite.com/support](https://www.tripplite.com/support)
Copyright © 2022 Tripp Lite. All rights reserved.

Documents / Resources

	<p>TRIPP LITE B006-VU4-1 4 Port PS 2 USB VGA KVM Switch [pdf] User Guide</p> <p>B006-VU4-1 4 Port PS 2 USB VGA KVM Switch, B006-VU4-1, 4 Port PS 2 USB VGA KVM Switch, USB VGA KVM Switch, VGA KVM Switch, KVM Switch, Switch</p>
---	---

References

- [ETN Help Center | Eaton](#)
- [ETN Product Registration | Eaton](#)
- [Manual-Hub.com - Free PDF manuals!](#)
- [User Manual](#)

[Manuals+](#), [Privacy Policy](#)

This website is an independent publication and is neither affiliated with nor endorsed by any of the trademark owners. The "Bluetooth®" word mark and logos are registered trademarks owned by Bluetooth SIG, Inc. The "Wi-Fi®" word mark and logos are registered trademarks owned by the Wi-Fi Alliance. Any use of these marks on this website does not imply any affiliation with or endorsement.