



# Triple CLM CLM-ENG-20210104 Water Leak Detection System Installation Guide

[Home](#) » [Triple CLM](#) » Triple CLM CLM-ENG-20210104 Water Leak Detection System Installation Guide 

## Contents

- [1 Triple CLM CLM-ENG-20210104 Water Leak Detection System](#)
- [2 IN THE KIT](#)
- [3 Installation Instructions](#)
- [4 Installation Procedure](#)
- [5 Documents / Resources](#)
- [6 Related Posts](#)



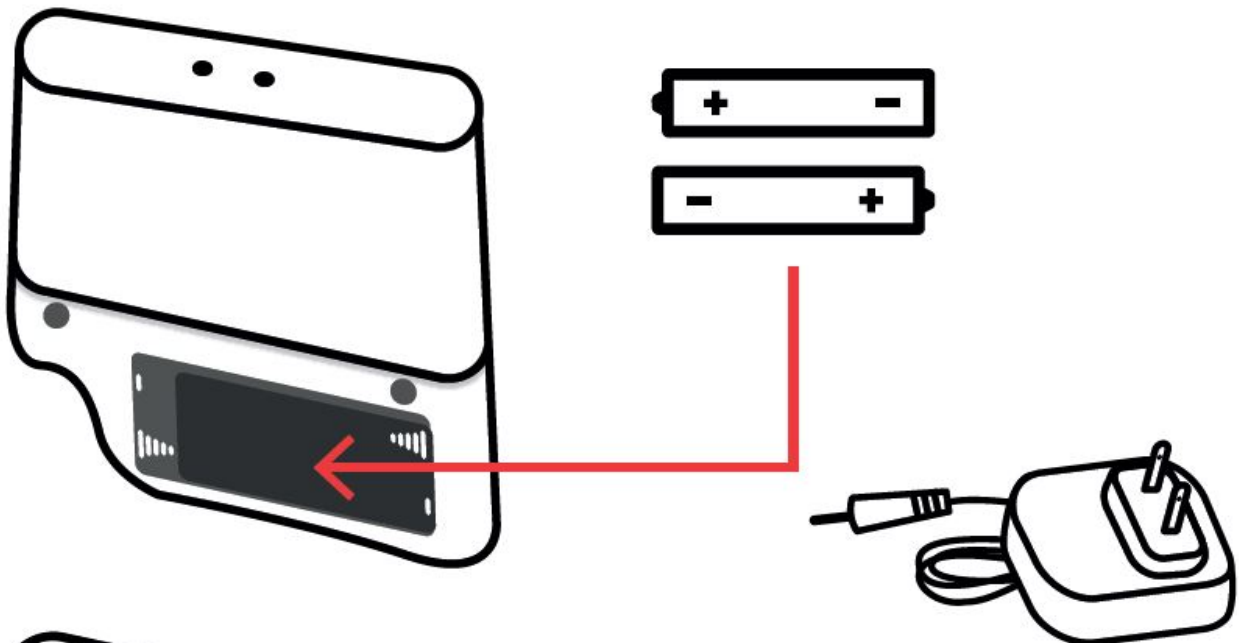
## Triple CLM CLM-ENG-20210104 Water Leak Detection System



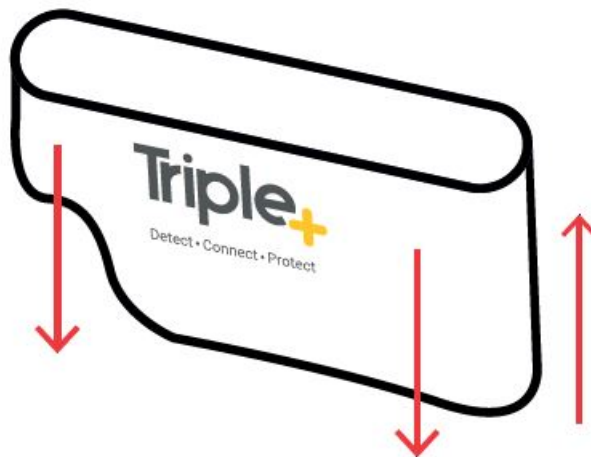
## IN THE KIT

## Box Contains:

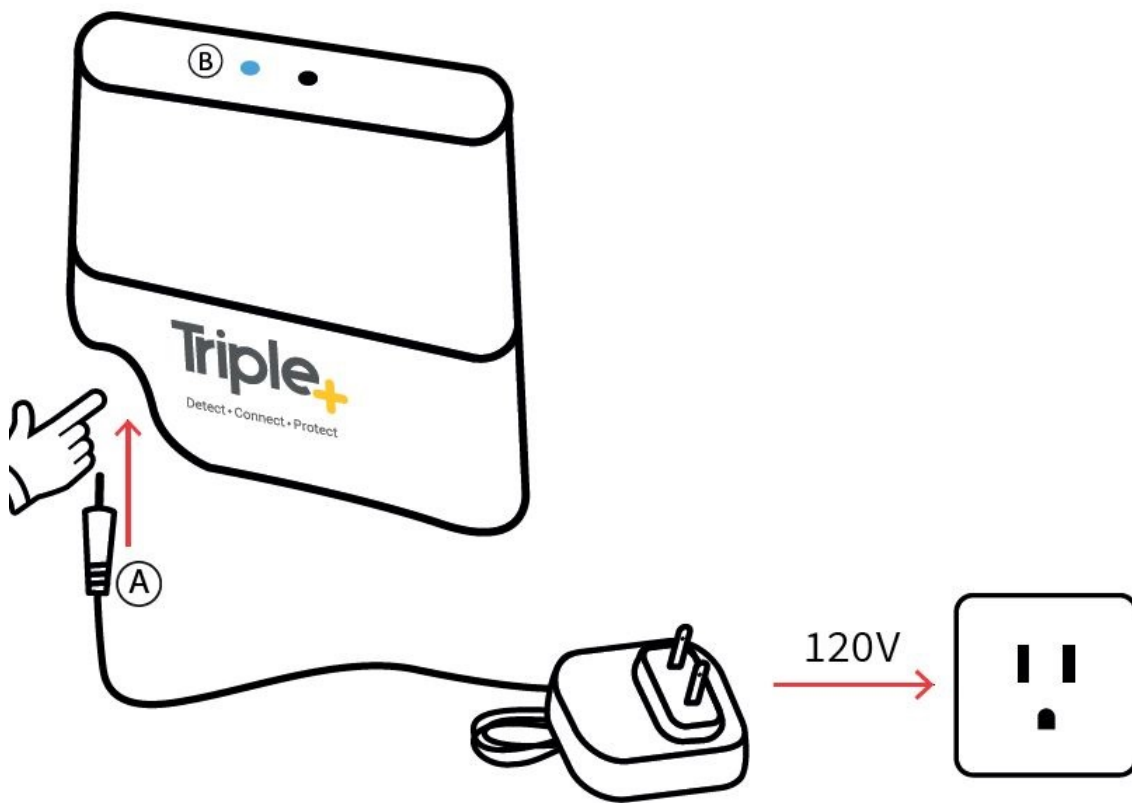
- Power adapter
- 2 X AA Backup batteries
- 1 X HUB
- 4 X Flood Detector
- 2 X AAA batteries
- Insert the supplied 2 AA backup batteries to the HUB -> HUB LED should flash Blue



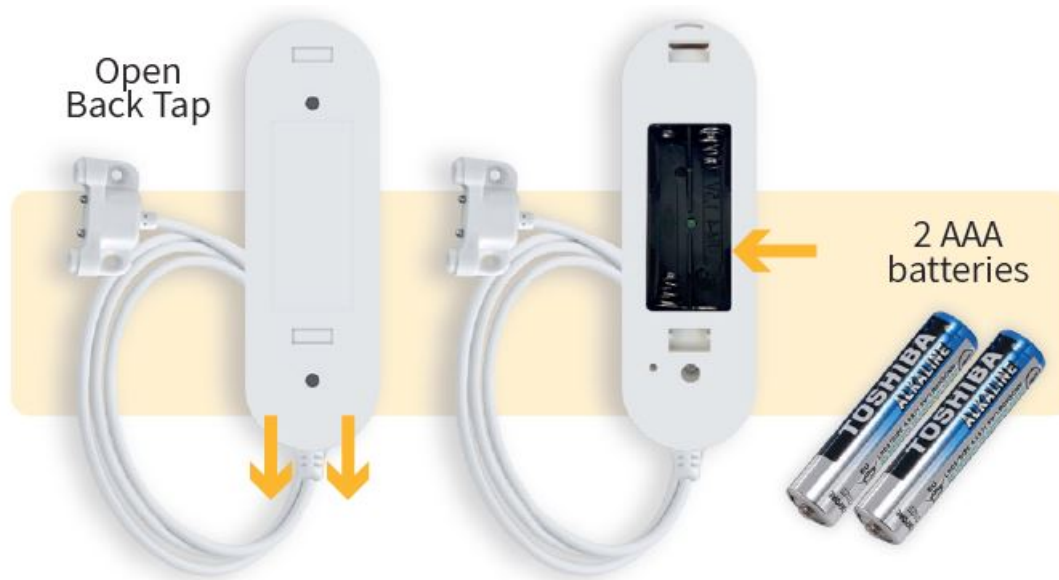
- After inserting the batteries, return the bottom part back in its original place



- Connect the supplied power A adapter to the power port -> Wait until HUB LED flashes Blue. B

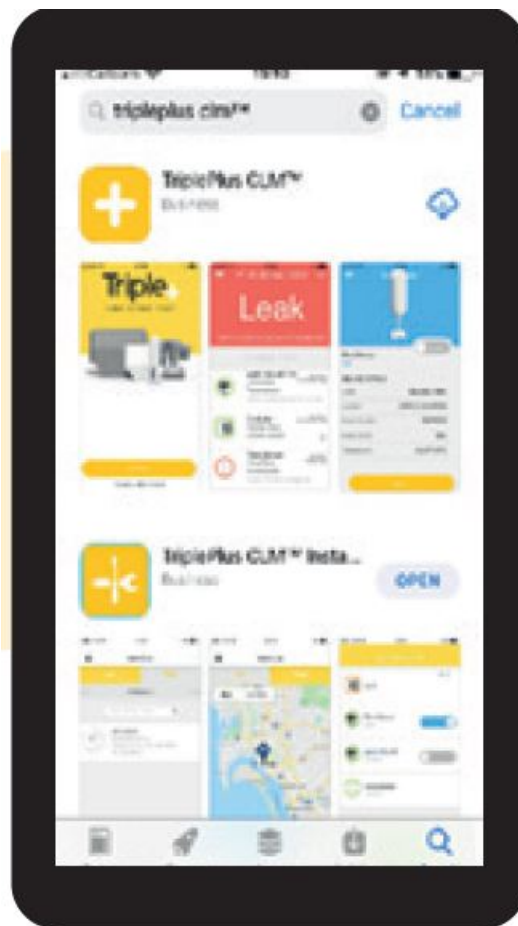


- Insert the 2 AAA batteries (included) into the Flood Detectors. Flood Detector LED should flash Red and beep.

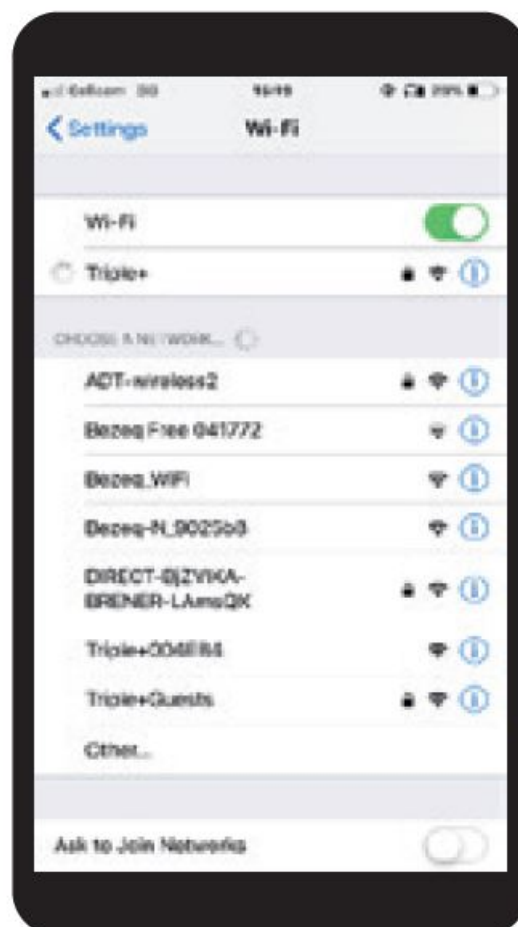


## Installation Instructions

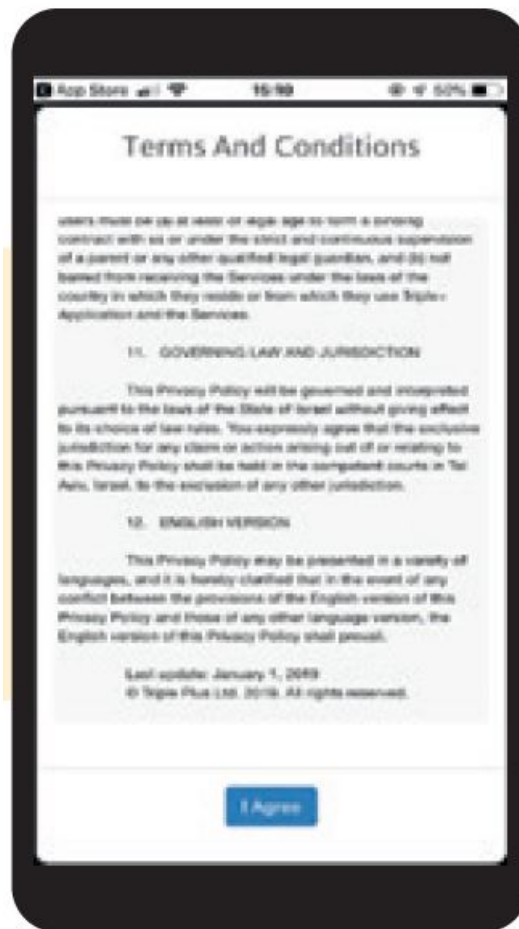
1. Download the free Triple+ CLM™ APP for your smartphone from Google Play or the AppStore. The entire installation is managed via your smartphone



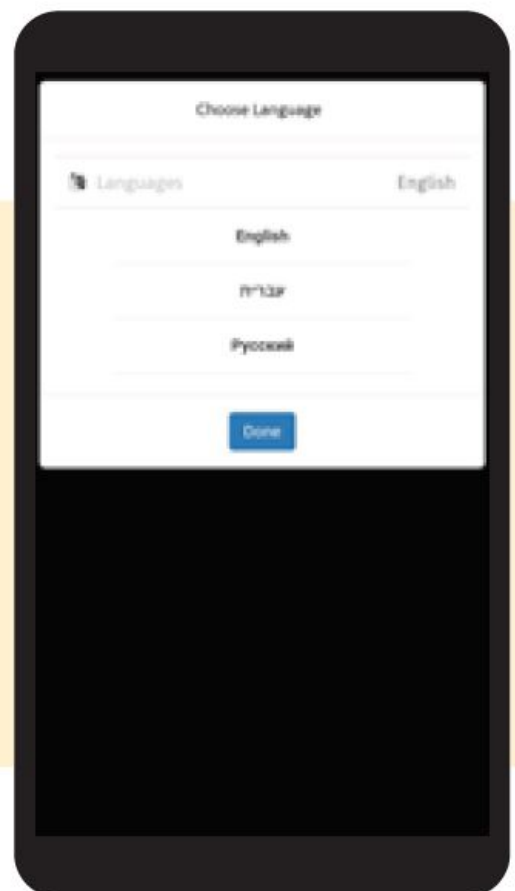
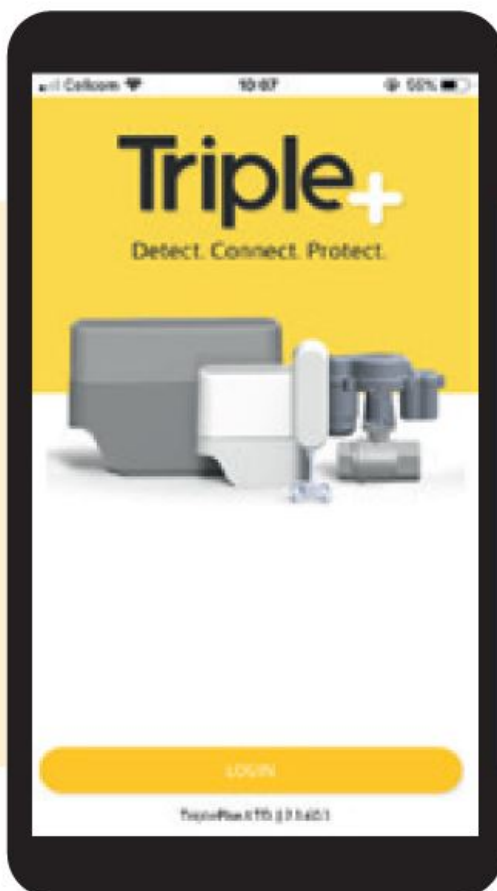
2. You will be registering the Triple+ CLM™ Hub V2.0 to your designated Wi-Fi network; please make sure that your mobile phone is connected to that same



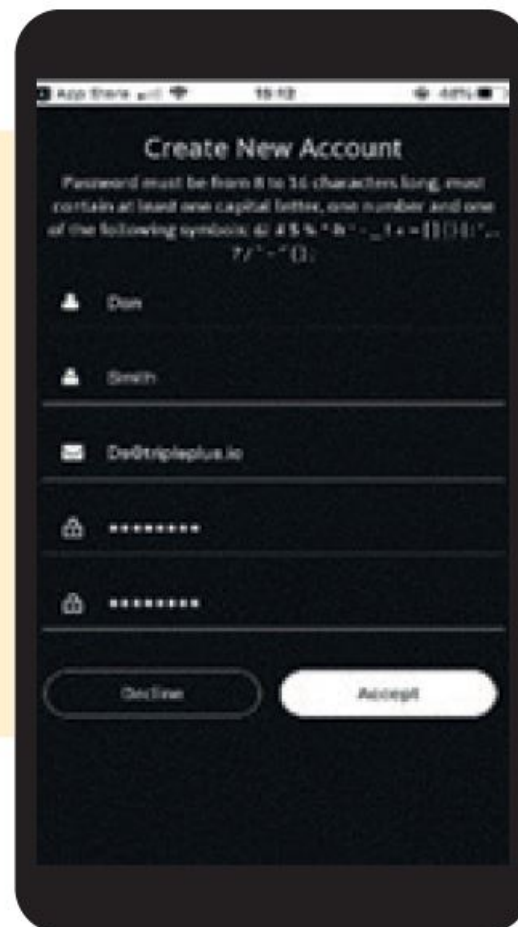
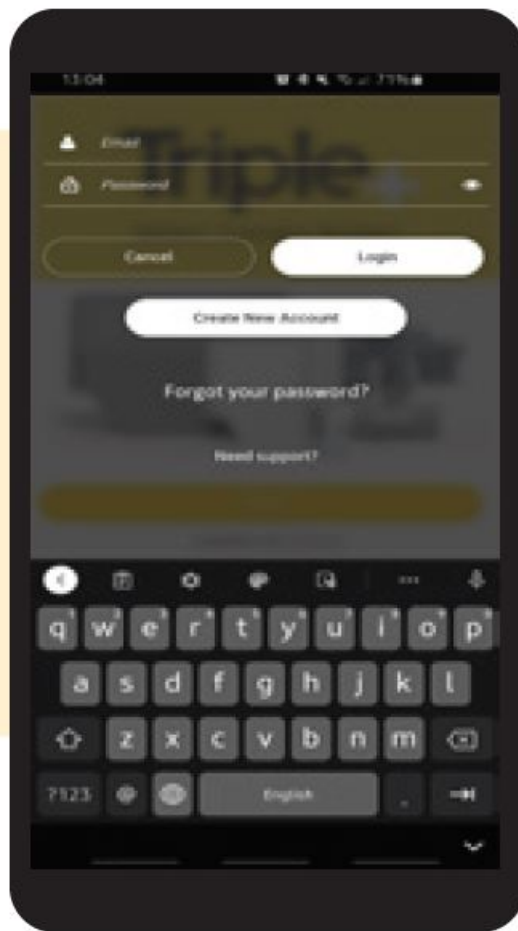
3. Read the terms and conditions, scrolling all the way down, then tap the "I Agree on button" at the bottom if you approve



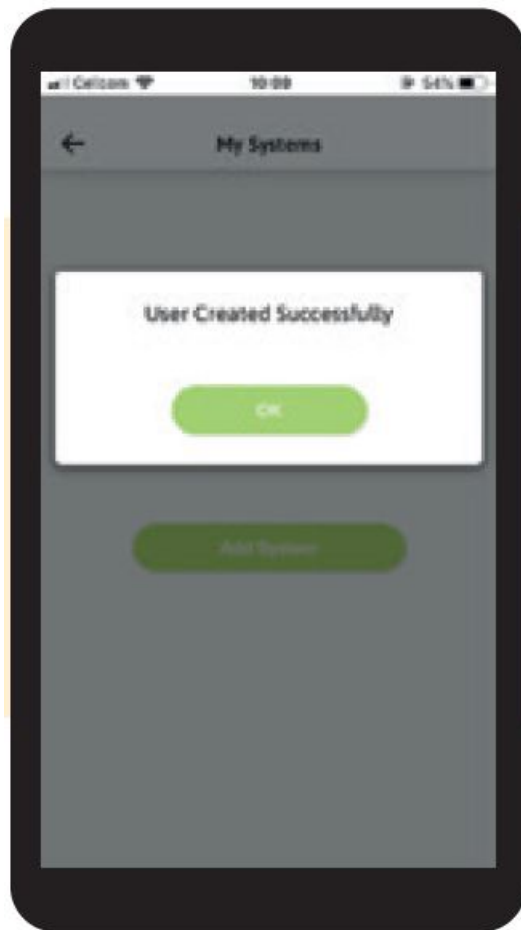
4. Tap the login button select your language



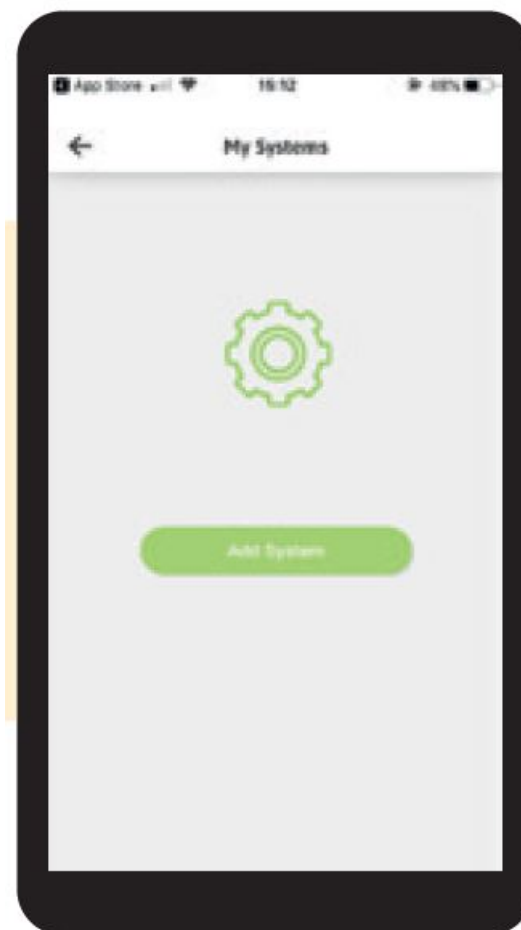
5. Tap the Create New Account button fill out the required fields and tap the Accept button



6. Tap the OK button

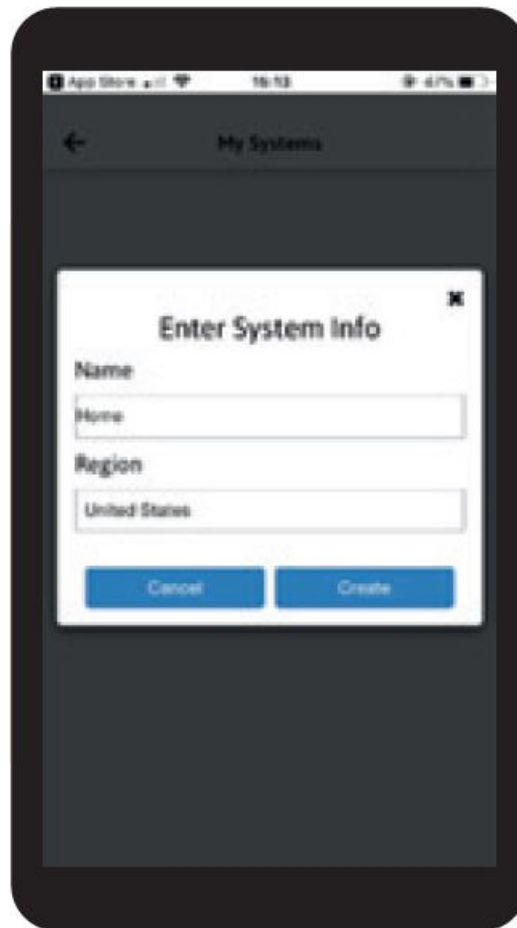


Tap the Add System button



7. Scan the Kit installation QR code on the OUTSIDE of the main kit box delivered
8. Then tap the Add System Name button and create your System- using your address is preferred, as it is unique. Then choose Region and tap the Create button.

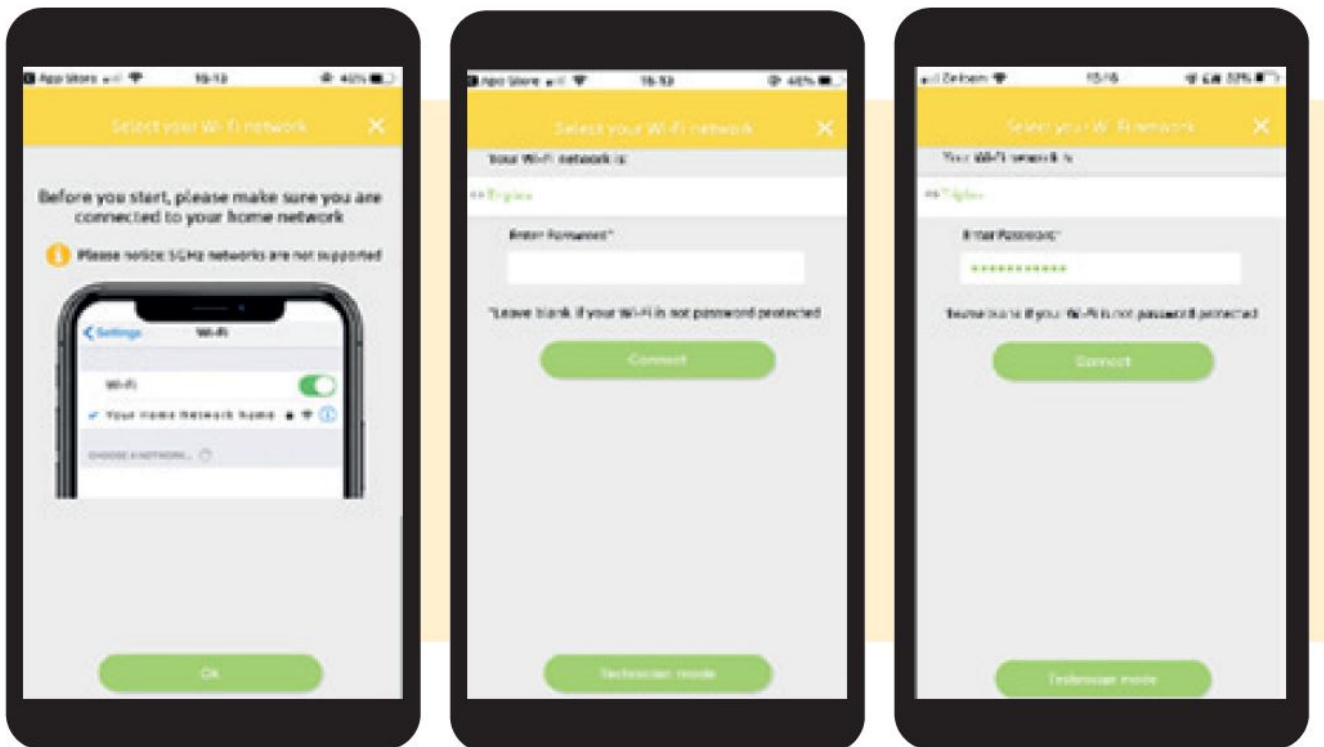




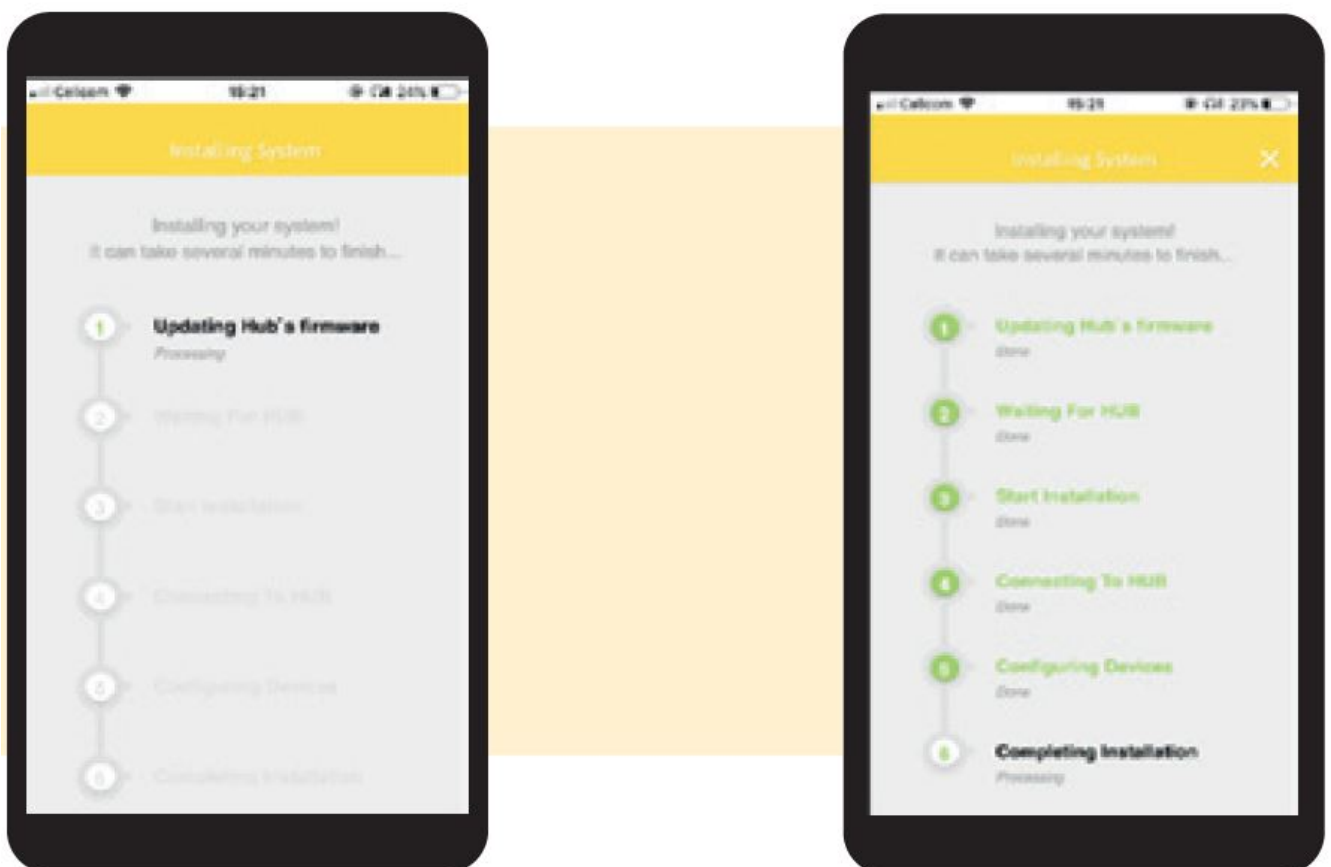
9. Follow the instructions on the APP to initiate the installation sequence. When requested to unplug the power from the Hub, please disconnect AC power first, then remove AA batteries, and reinsert AA batteries before plugging AC Power back in, then tap the “OK” button



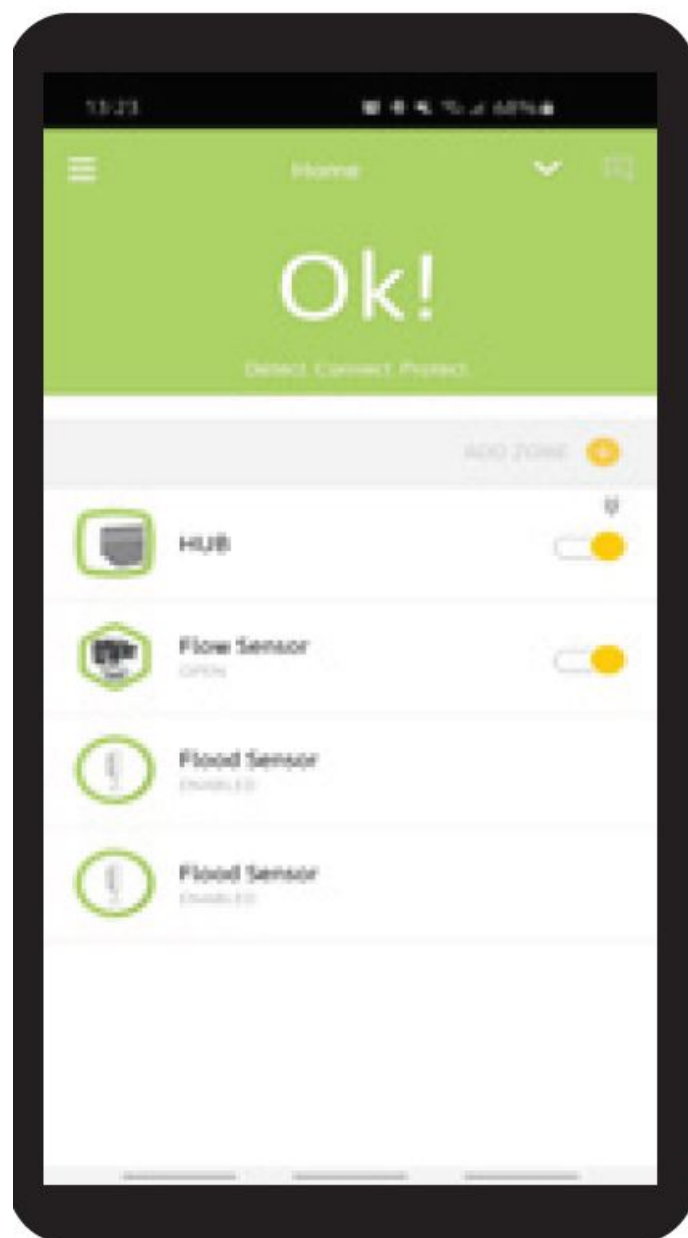
10. batteries back in the hub and plug in the AC power, please check to ensure that you are connected to your selected WiFi network



11. After the Hub connects to the Wi-Fi the installation will start automatically



12. Locate the devices in their intended, permanent location and verify that all the devices communicate with the Triple+ CLM™ Hub V2.0 by verifying that all display in green. You can now secure the devices in those locations with two-sided tape or screws.



Flood detectors must be located  
where water leaks can occur



Sink



Water Heater



Water Tank



Toilet



Water Cooler



Dishwasher



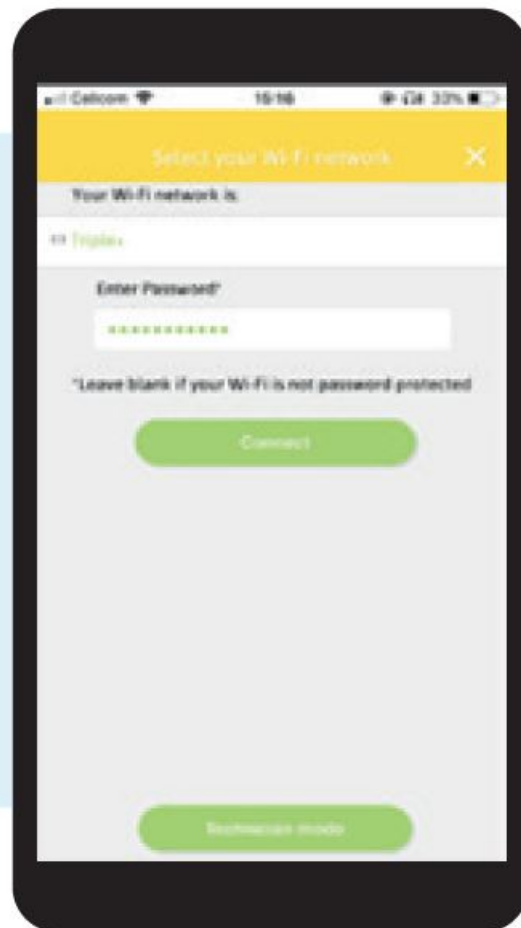
Washing Machine



Basement

### Installation Procedure

1. Whenever the Triple+ CLM™ Hub V2.0 cannot connect to the desired Wi-Fi network, please follow the following steps: A) Make sure that the Wi-Fi that you want to work with supports 2.4GHz. B) Tap on the "Technician mode" button.

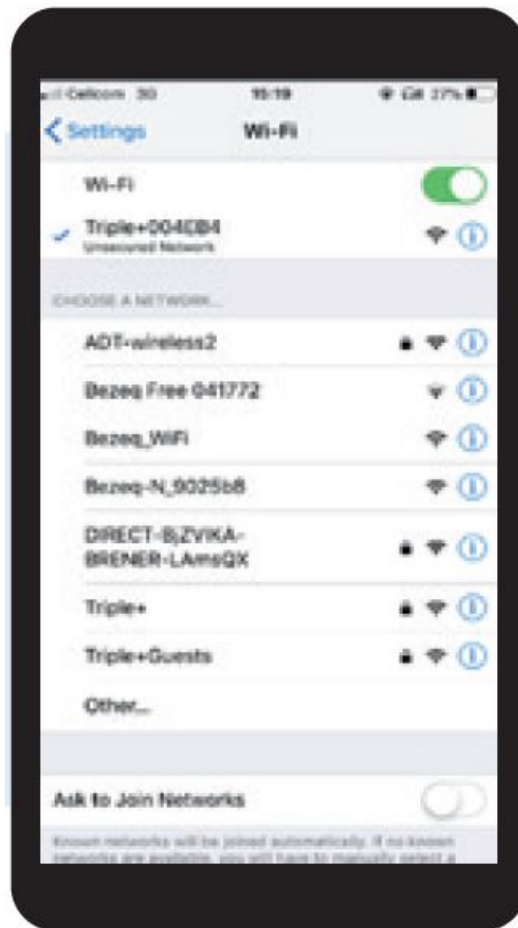


2. Follow the instructions on the APP to initiate the installation sequence. When requested to unplug the power from the Hub, please disconnect AC power first, then remove AA batteries, and reinsert AA batteries before plugging AC Power back in, then tap the “OK” button.

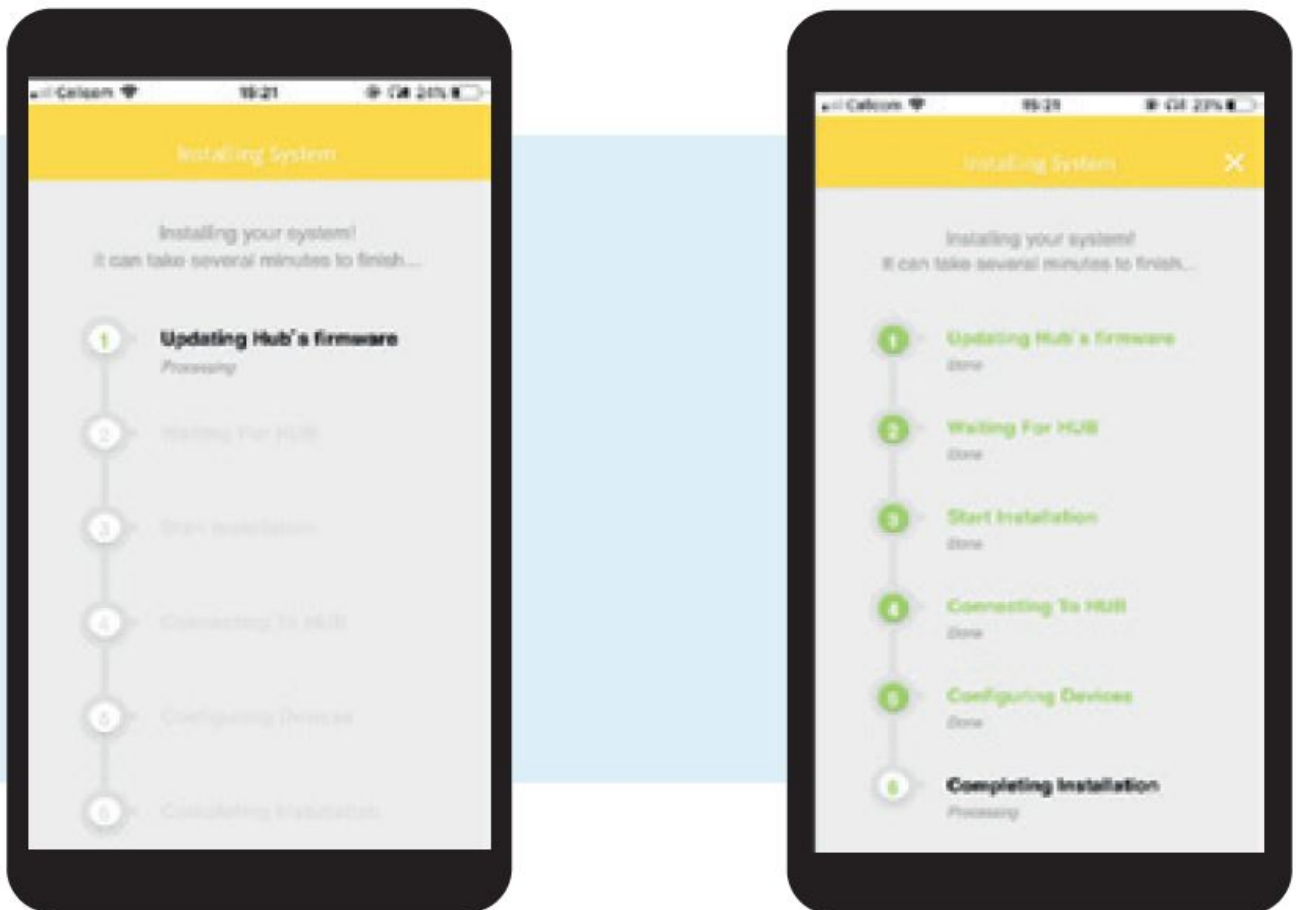


3. Go to the Wi-Fi network selector on your mobile phone and connect to the Triple+ Wi-Fi network the WiFi name

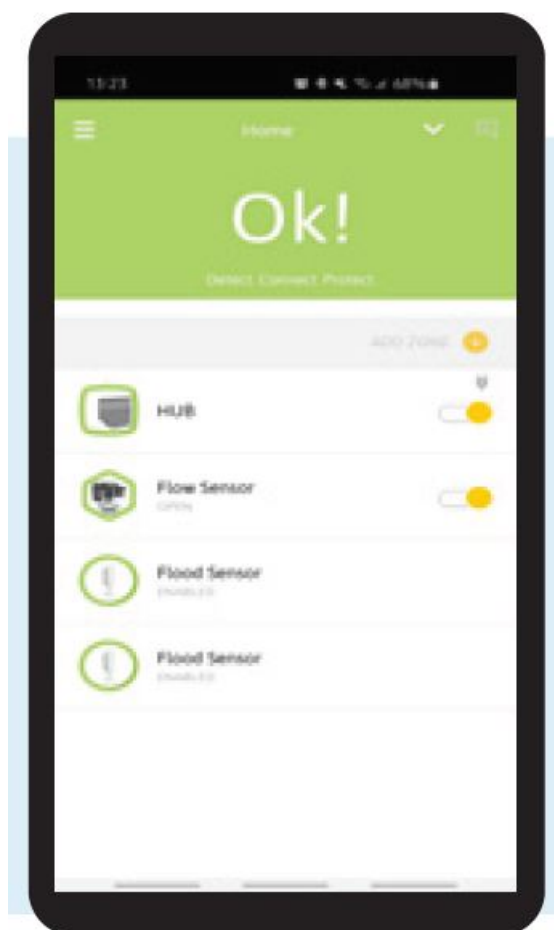
will start with “Triple+” and six characters – no password is required.



4. Return to the Triple+ App and wait for the “Successfully connected to Triple+ HUB” pop up. Tap on “Continue” and select your designated Wi-Fi network from the list. Enter password if necessary and wait for the application to give further instructions.



5. After the hub connects to the Wi-Fi the installation will start automatically
6. Locate the devices in their intended, permanent location and verify that all the devices communicate with the Triple+ CLM™ Hub V2.0 by verifying that all displaying in green. You can now secure the devices in those locations with two-sided tape or screws.



## Documents / Resources



[Triple CLM CLM-ENG-20210104 Water Leak Detection System](#) [pdf] Installation Guide  
CLM-ENG-20210104 Water Leak Detection System, CLM-ENG-20210104, Water Leak Detection System