



## TriPEAK T47-86 Threaded Bottom Bracket Installation Guide

[Home](#) » [TRiPEAK](#) » TriPEAK T47-86 Threaded Bottom Bracket Installation Guide 

### Contents

- [1 TriPEAK T47-86 Threaded Bottom Bracket](#)
- [2 Product Usage Instructions](#)
- [3 INSTALLATION](#)
- [4 General Safety](#)
- [5 Installation of Crank's Adapter](#)
- [6 Bottom Bracket Maintenance](#)
- [7 Documents / Resources](#)
  - [7.1 References](#)
- [8 Related Posts](#)



**TriPEAK T47-86 Threaded Bottom Bracket**



## Specifications

- Bike Frame: T47-86
- Thread Type Inner Diameter: 47mm
- Width: 85.5-86mm
- Non-Drive Side Cup
- Center Tube
- Drive Side Cup

## Product Usage Instructions

### Pre-Installation Preparation

1. Ensure internal cable routing of the bike frame does not interfere with the bottom bracket (BB) installation.
2. Clean the threads of the frame and apply a thin layer of grease on the threads and BB contact surface to prevent seizing with the BB shell.
3. Clean the threads on the BB shell and apply a thin layer of grease.

## Installation Steps

### Drive Side Installation

1. Ensure the drive side BB shell and tube are properly aligned and engaged.
2. Screw the drive side BB counterclockwise into the frame.
3. Use a BB cartridge wrench with a torque wrench to secure the BB shell to 30Nm.
4. If there is excessive resistance, check thread alignment or for any damage before proceeding.

### **Non-Drive Side Installation**

1. Ensure the non-drive side BB shell and tube are properly aligned and engaged.
2. Screw the non-drive side BB clockwise into the frame.
3. Use a BB cartridge wrench with a torque wrench to secure the BB shell to 30Nm.
4. If there is excessive resistance, check thread alignment or for any damage before proceeding.

### **Lubrication**

1. Carefully pry off the outer seals from the bearings using a small tool without damaging them.
2. Clean the bearings thoroughly with a suitable solvent to remove old lubricant and debris. Allow them to dry completely.
3. Add a full lap of bearings using TRIPEAK ETERNA LV Fluid or recommended lubricant. Rotate the bearings by hand to distribute the lubricant evenly.

### **FAQ**

- **Q: What lubricant should I use for the bearings?**

A: TRIPEAK ETERNA LV Fluid is recommended for lubricating the bearings. Ensure to rotate them gently by hand after application for even distribution.

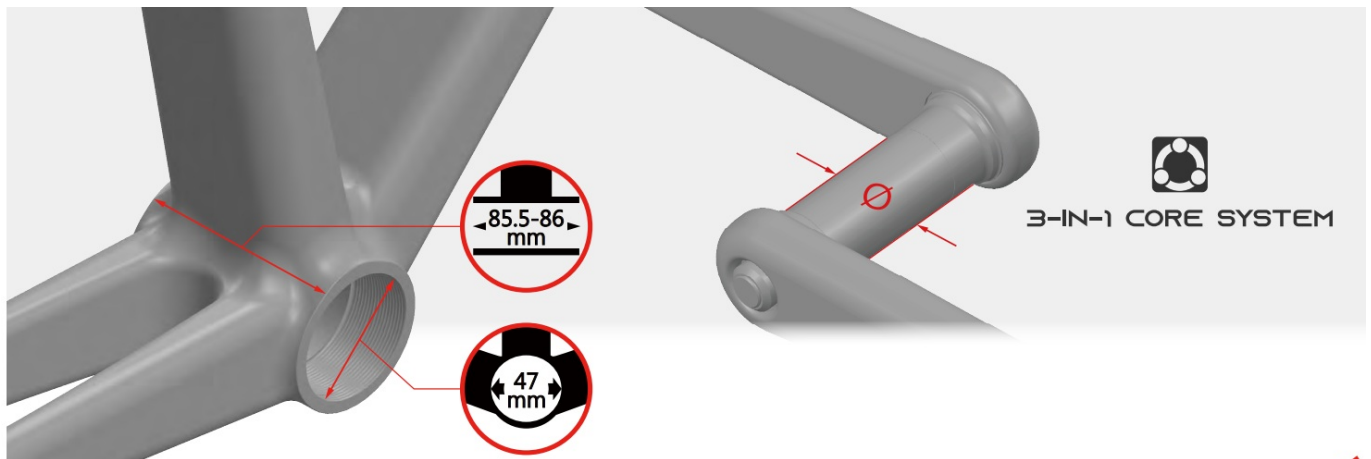
- **Q: What should I do if there is excessive resistance while screwing in the BB?**

A: Stop and check for thread alignment or damage. If there is damage, re-tap the threads before proceeding with installation.

### **INSTALLATION**

#### **Specification Check**

Before installation, please ensure that your bike frame and crankset meet the following specifications.



## Bike Frame : T47-86

Thread Type  
Inner Diameter : 47mm  
Width : 85.5-86mm

## Crank Spec:

**Shimano HT II : Ø24mm** ✓

**SRAM DUB : Ø28.99mm** ✓

**ROTOR 3D+ : Ø30mm** ✓

## BB T47-86 Anatomy

Before installation, please ensure that the purchased BB meets the following specifications and includes the following contents.



## General Safety

- To install TRiPEAK Bottom Bracket, we strongly recommend that you have a trained bicycle mechanic at your local bike shop.
- Do not alter this product in any way as it can cause unseen damage. Any modifications to this product will void the warranty.
- Make sure the crankset is firmly attached to the bottom bracket, Improperly attached cranks can become detached from the BB set.
- When cleaning the bottom bracket set, only use mild soap and water. Never use high-pressure water jet, It will cause BB cup internal water ingress and influencing the bearing rolling lifetime.
- If you have any questions or concerns about this product, Please feel free to contact us. E-mail:

[info@tripeakbearing.com](mailto:info@tripeakbearing.com)











## Required Tools



### TRIPEAK Tool

Required : B015 Tool compatible with torque wrench for installation use.

							
Safety Glasses	Gloves	Bike Stand	Torque Wrench	12-Notch BB Tool	Lubricating Grease	Water-Based Cleaner	Thread Tap
PROTECTION SUPPLIES			OPERATING TOOLS			POTENTIALLY REQUIRED TOOLS	

## Bottom Bracket Installation

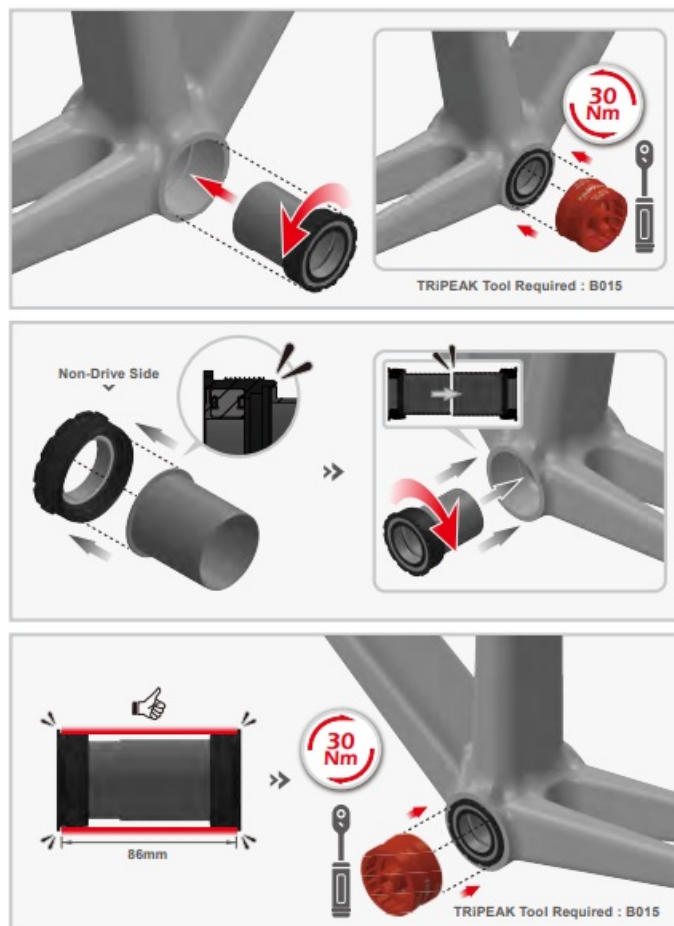
1. Use the included TRIPEAK ETERNA LV Fluid to Add a full lap of bearings. Rotate the bearings gently by hand to ensure the lubricant is evenly distributed.
2. Carefully press the seals back into place on the bearings, ensuring they are seated properly and securely. Ensure the internal cable routing of the frame will not interfere with the BB installation. Clean the threads of the frame, and apply a thin layer of grease on the threads and the BB contact surface to prevent seizing with the BB shell.
3. Clean the threads on the BB shell, and apply a thin layer of grease. Remove the non-drive side BB shell and

non-drive side tube, to be installed later.



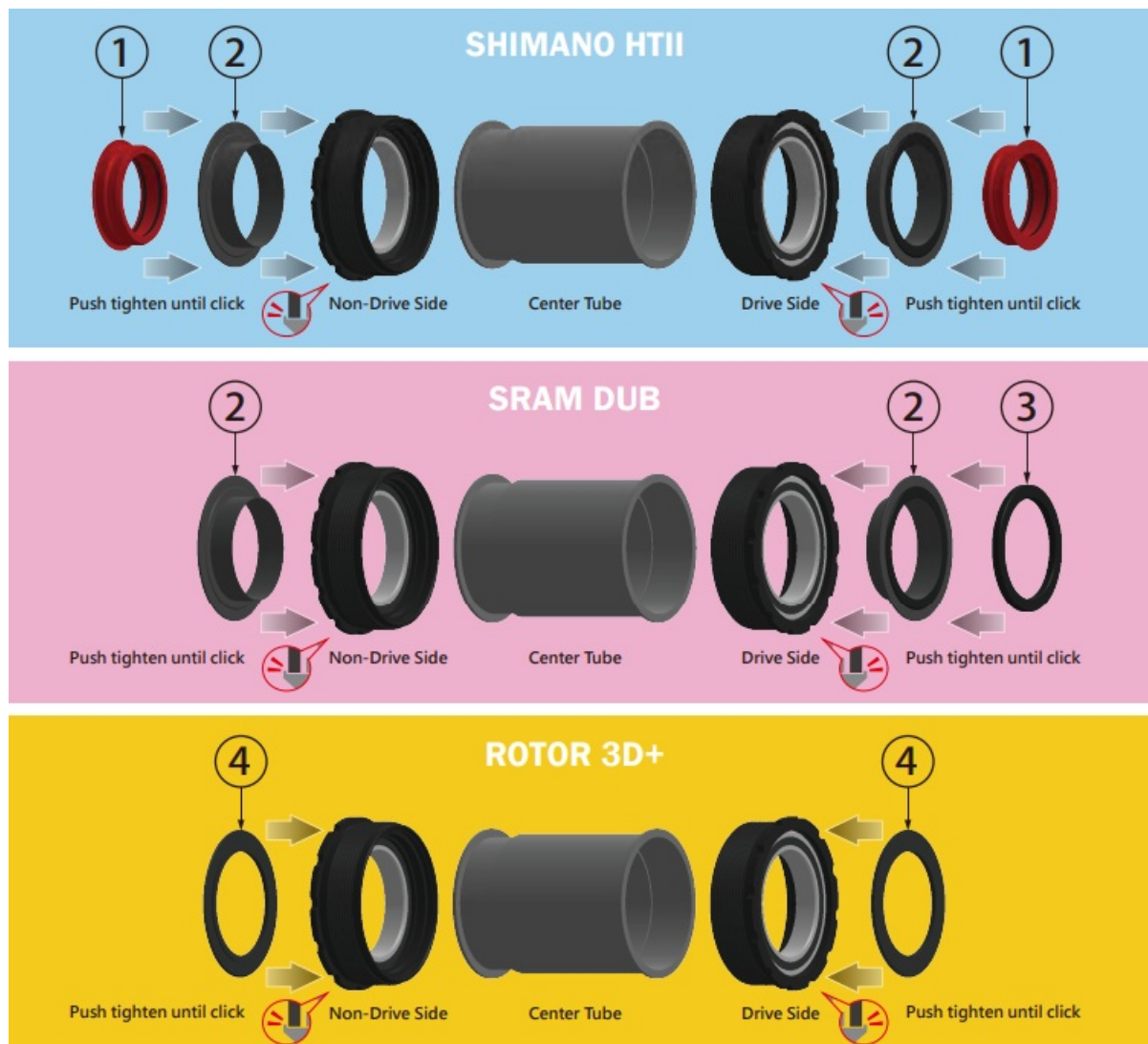
4. Ensure the drive side BB shell and drive side tube are properly engaged. While inserting, ensure there is no interference between the BB tube and the internal cables of the frame.
5. Screw the drive side BB counterclockwise into the drive side of frame. After screwing in the drive side BB, use the BB cartridge wrench with the torque wrench to secure the BB shell to 30Nm.  
If there is excessive resistance while screwing in, stop and check the thread alignment or for any thread damage. If there had damage, re-tap the threads before proceeding.
6. Ensure the non-drive side BB shell and non-drive tube are properly engaged. When inserting into the frame, ensure the tubes on both ends are aligned properly. Screw the non-drive side BB clockwise into the non-drive side of frame.
7. If there is excessive resistance while screwing in, stop and check the thread alignment or for any thread damage. If there had damage, re-tap the threads before proceeding.  
After screwing in the BB of both side, use the BB cartridge wrench with the torque wrench to secure the BB shells to 30Nm Max.





## Installation of Crank's Adapter

3-IN-1 CORE SYSTEM



## Bottom Bracket Maintenance

- For maintaining and servicing TRiPEAK bottom brackets, we strongly recommend hiring a trained bicycle mechanic at your local bike shop.
- Regular maintenance is generally recommended after riding 5,000-10,000 km. If riding in harsh conditions (wet, dusty, extreme temperatures, etc.), it is advised to perform maintenance immediately after riding.
- Avoid repeated disassembly and reassembly of the BB Cup unless necessary, as maintenance should only focus on the BB bearings to prevent damage to the frame.
- Do not use high-pressure water jets to clean the BB to avoid water infiltration and bearing damage.
- Regularly check the torque value of the BB Cup, and do not ride with a loose BB Cup.
- Bearing specifications for T47-86 BB.





**Drive Side** : 42 x 30 x 7mm (6806-2RS)

### Lubricant Recommendation

TRiPEAK ETERNA LV Fluid



Product NO.  
EMA-GS52-003G



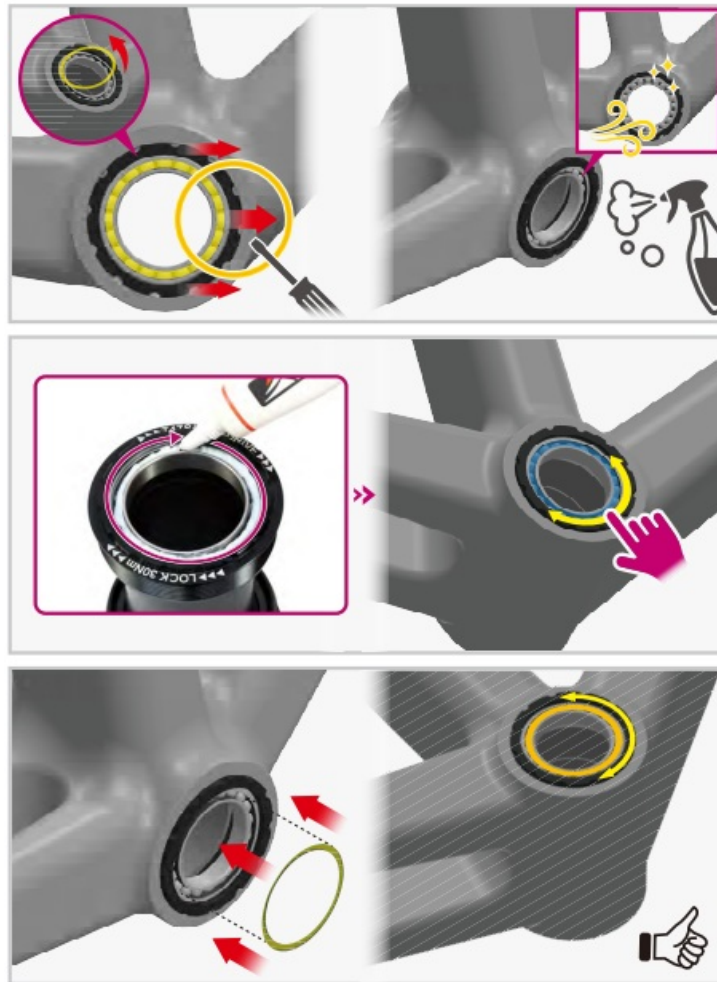
Product NO.  
EMA-GS52-010G



Product NO.  
EMA-GS52-030G

Reapply lubricant to Bottom Bracket

1. Carefully use a small tool to gently pry off the out outer seals from the bearings. Use a suitable solvent to clean the bearings thoroughly, removing old lubricant and any debris. Allow them to dry completely.  
Be cautious not to damage the seals or the bearings.
2. Use TRiPEAK ETERNA LV Fluid or the appropriate lubricant to Add a full lap of bearings. Be sure to use the correct type of lubricant recommended for your specific bearings.  
Rotate the bearings gently by hand to ensure the lubricant is evenly distributed.
3. Carefully press the seals back into place on the bearings, ensuring they are seated properly and securely.  
After reassembly, check to ensure the bearings move smoothly and without resistance.



**JETSTREAM PRO**  
THREADED  
BOTTOM BRACKET

[WWW.tripeakbearing.com](http://WWW.tripeakbearing.com)

**Documents / Resources**



[TriPEAK T47-86 Threaded Bottom Bracket](#) [pdf] Installation Guide  
T47-86 Threaded Bottom Bracket, T47-86, Threaded Bottom Bracket, Bottom Bracket, Bracket

References

- [DomainKing.com: Home of The Domain King®, Rick Schwartz.](#)
- [User Manual](#)

[Manuals+.](#) [Privacy Policy](#)

This website is an independent publication and is neither affiliated with nor endorsed by any of the trademark owners. The "Bluetooth®" word mark and logos are registered trademarks owned by Bluetooth SIG, Inc. The "Wi-Fi®" word mark and logos are registered trademarks owned by the Wi-Fi Alliance. Any use of these marks on this website does not imply any affiliation with or endorsement.