

TRILUX ZAR LLWRR-03 Ceiling Junction Box Instruction Manual

[Home](#) » [TRILUX](#) » TRILUX ZAR LLWRR-03 Ceiling Junction Box Instruction Manual 

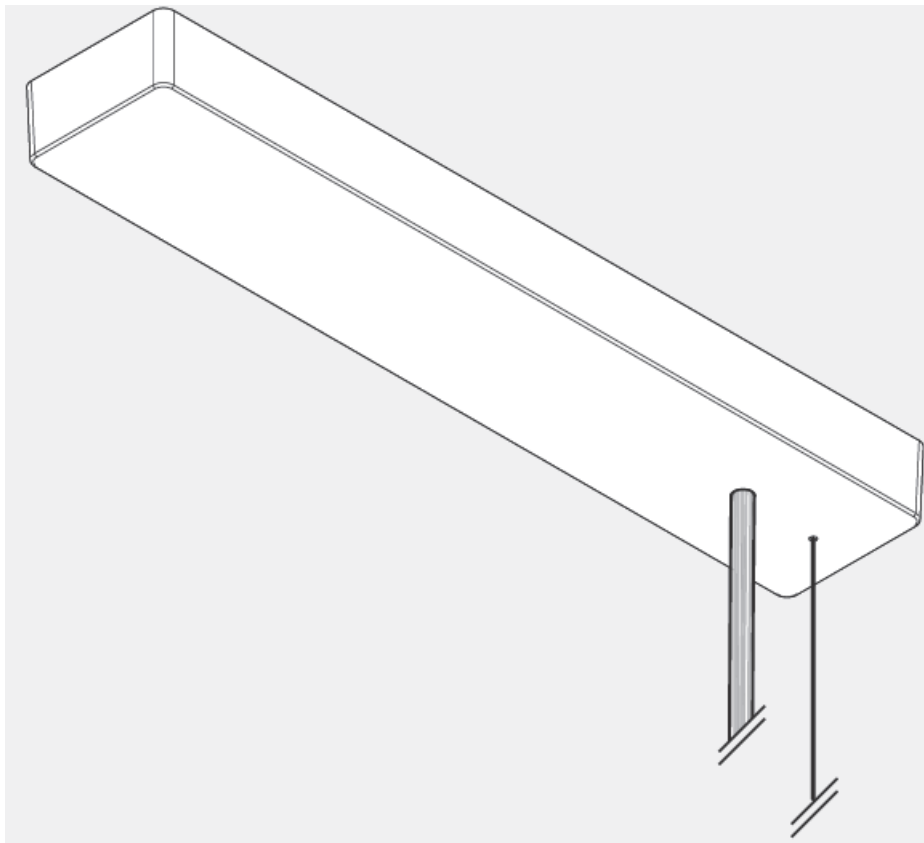
Contents

- [1 TRILUX ZAR LLWRR-03 Ceiling Junction Box](#)
- [2 Explanation of the warning levels](#)
- [3 Safety instructions and safety labels](#)
- [4 Instruction](#)
- [5 Documents / Resources](#)
 - [5.1 References](#)
- [6 Related Posts](#)



TRILUX
SIMPLIFY YOUR LIGHT.

TRILUX ZAR LLWRR-03 Ceiling Junction Box



For your safety

Read all instructions and mounting steps carefully. Keep the instructions for maintenance or disassembly work.

Explanation of the warning levels

Observe and follow the warnings. Non-observance of the warnings may lead to injuries or material damage!

- **WARNING!** Indicates dangers which can result in serious and/or fatal injuries.
- **CAUTION!** Indicates dangers which can result in injuries or health hazards.
- **NOTICE.** Indicates dangers which can result in material damage or malfunctions.

Explanation of warning messages and instructional pictograms

- **WARNING!** The electrical connection must be carried out by professional personnel who are trained and authorised.
- **WARNING!** The assembly must be carried out by professional personnel who are trained and authorised.
- **WARNING!** Risk of electric shock! Never work with electrical voltage applied.
- **WARNING!** Observe the additional installation instructions for the associated luminaire.

Safety instructions and safety labels

Electronic control gear units (ECG)

A neutral conductor interruption in the three-phase circuit leads to overvoltage damage in the lighting system. Only open the neutral conductor isolating terminal in deenergised state, and close the neutral conductor isolating terminal before switching on again. Do not exceed the maximum permissible ambient temperature t_a of the luminaire. Exceeding this limit reduces the service life and in extreme cases there is a risk of premature failure of the luminaire. Design connection cables for the control inputs of DALI control gear (1-10 V, DALI etc.) to be 230 V mains voltage-proof (basic insulation).

Intended use

Safety class: I

Protection rating: IP20

Intended for indoor use.

Suitable for further wiring. Max. total current 10 A at 1,5 mm².

Suitable for further wiring. Max. total current 16 A at 2,5 mm².

Conformity

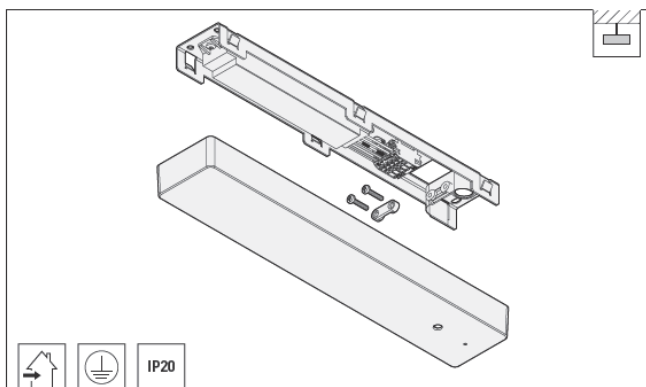
Directive 2014/53/EU

Simplified EU Declaration of Conformity according to the RED Directive if the luminaire is equipped with a control gear unit with NFC interface or a radio component:

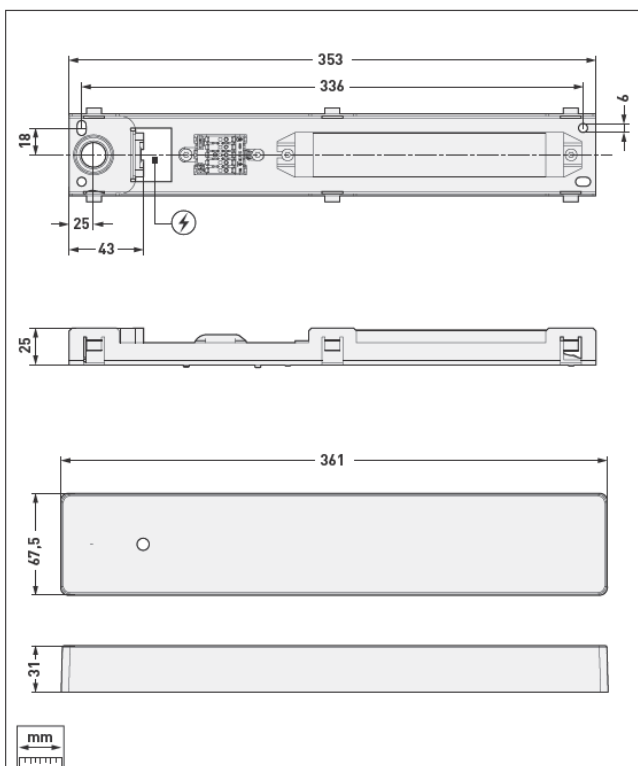
TRILUX hereby declares that the radio system type ZAR ... LL ... complies with Directive 2014/53/EU. The full text of the EU Declaration of Conformity is available on the Internet at: www.trilux.com/eu-conformity

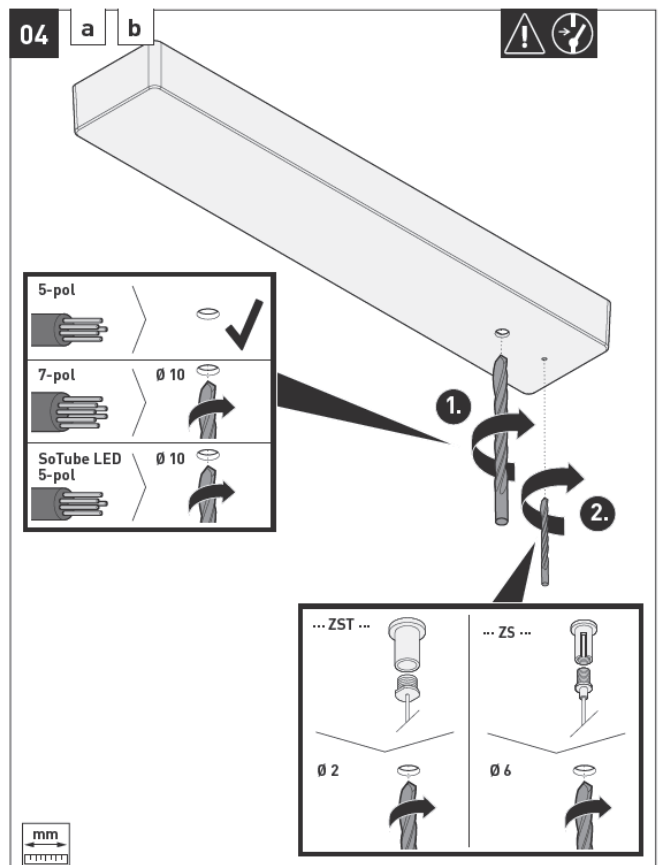
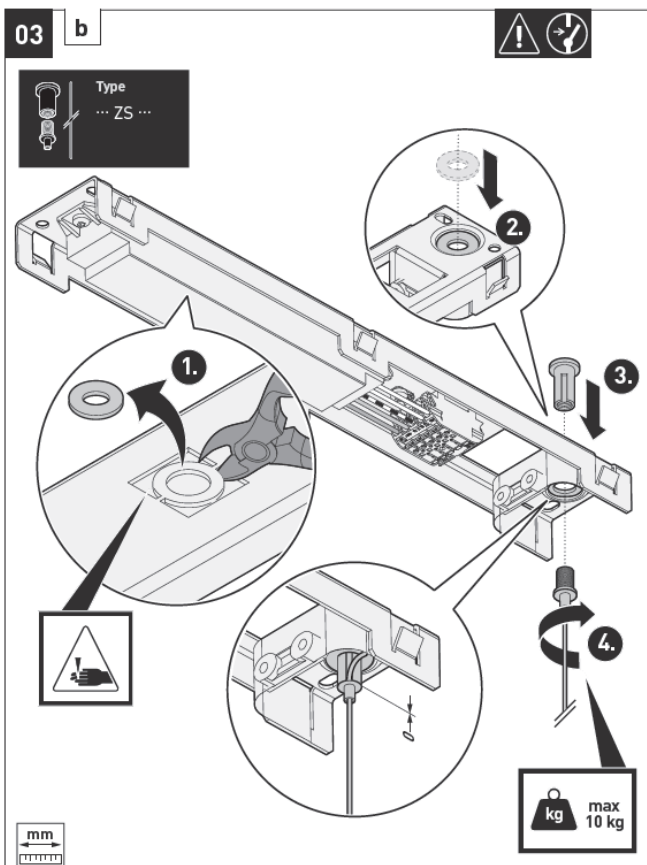
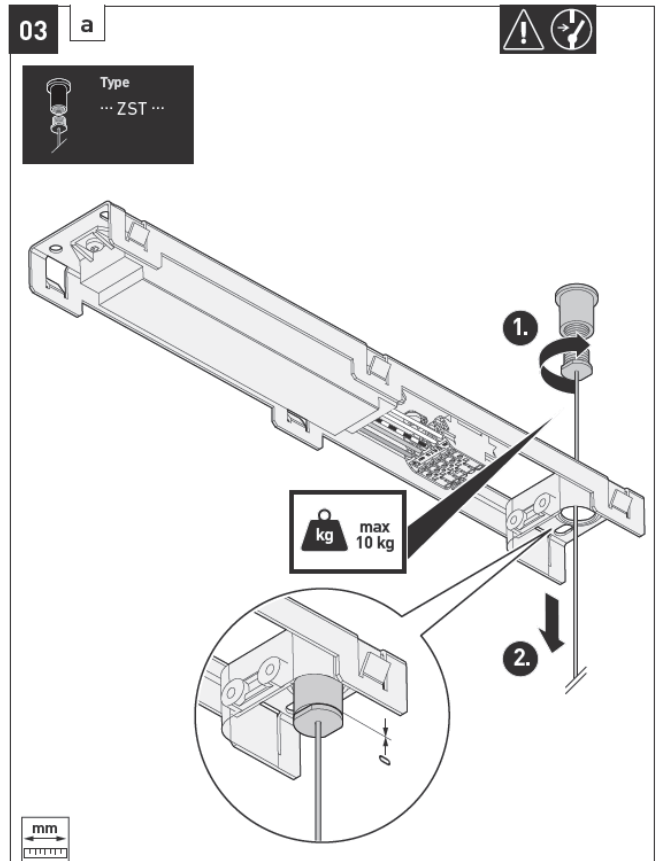
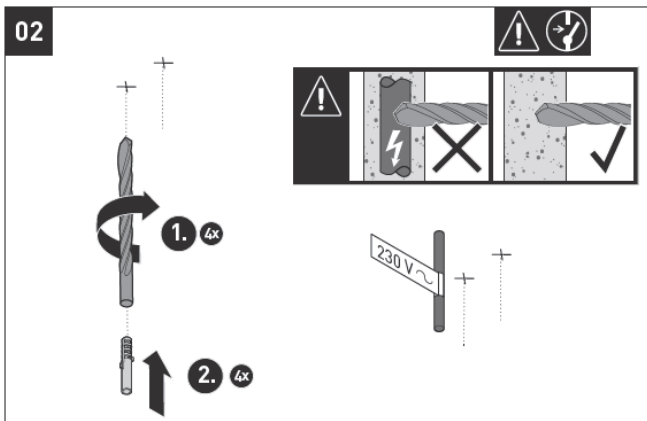
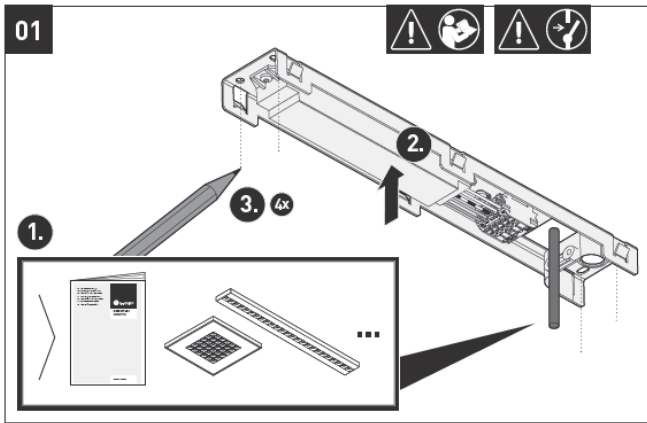
Instruction

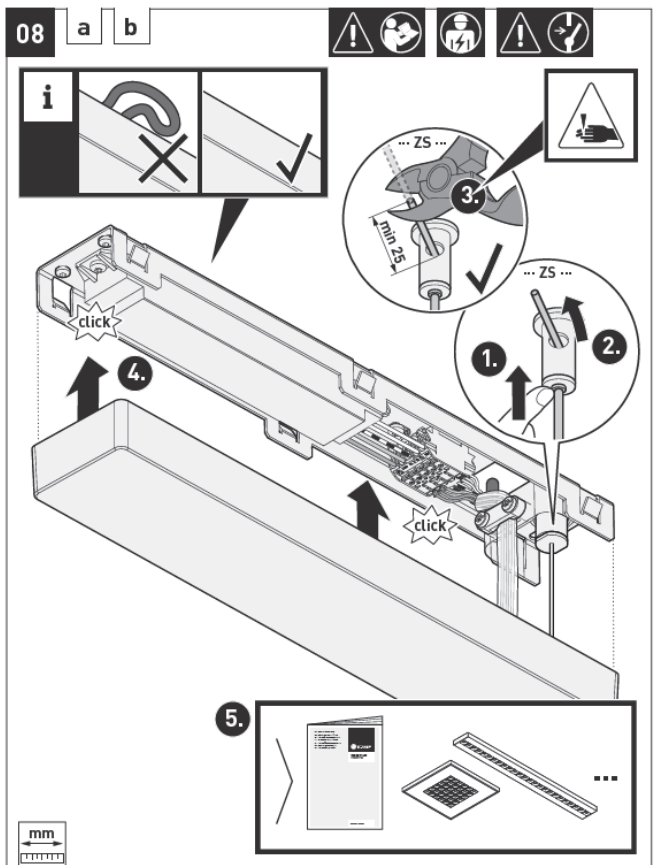
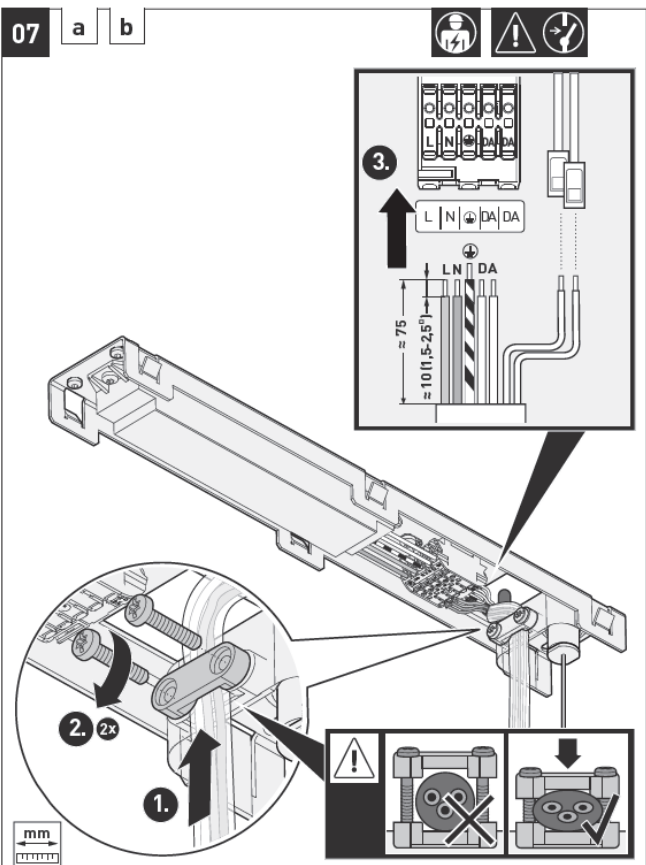
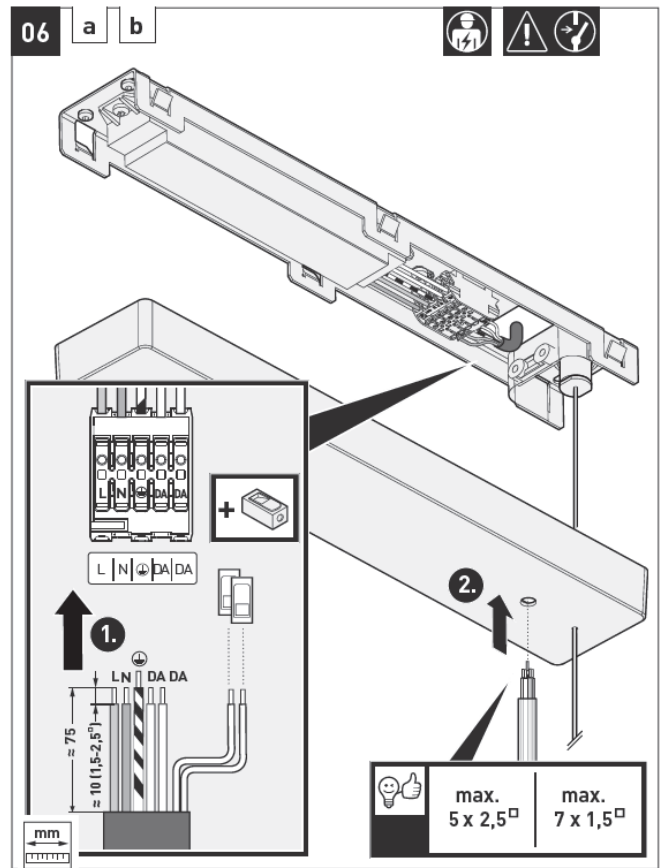
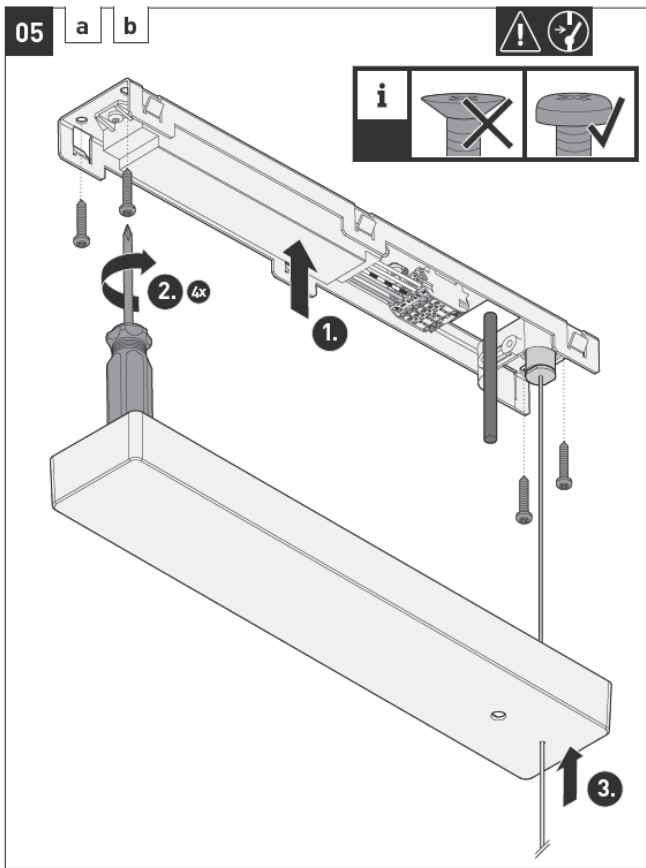
Type	TOC
ZAR+LLWC ... 01	70 025 00
ZAR+LLWC ... 03	70 026 00
ZAR+LLWC ... 05	78 540 00
ZAR+LLWRC ... 01	70 110 00
ZAR+LLWRC ... 03	70 111 00
ZAR+LLWRC ... 05	78 537 00



Type
ZAR+LLWC ...
ZAR+LLWRC ...









[TRILUX ZAR LLWRR-03 Ceiling Junction Box](#) [pdf] Instruction Manual
ZAR LLWRR-03 Ceiling Junction Box, ZAR LLWRR-03, Ceiling Junction Box, Junction Box, Bo
x

References

- [LED lighting & individual lighting solutions | TRILUX](#)
- [LED lighting & individual lighting solutions | TRILUX](#)
- [Service - TRILUX Simplify Your Light](#)
- [User Manual](#)