



# TRILUX SNS RC1 LED Top Light Instruction Manual

[Home](#) » [TRILUX](#) » TRILUX SNS RC1 LED Top Light Instruction Manual 

## Contents

- [1 TRILUX SNS RC1 LED Top Light](#)
- [2 Product Information](#)
- [3 MODELS](#)
- [4 For your safety](#)
- [5 Explanation of Important Symbols](#)
- [6 Safety notes](#)
- [7 Important Information on Electronic](#)
- [8 Intended use](#)
- [9 SONNOS LED](#)
- [10 INSTALLATION](#)
- [11 CONTACT](#)
- [12 Documents / Resources](#)
  - [12.1 References](#)
- [13 Related Posts](#)



**TRILUX**  
SIMPLIFY YOUR LIGHT.

## TRILUX SNS RC1 LED Top Light



## Product Information

### • Specifications

- **Product Name:** SONNOS LED
- **Model Numbers:** SNS RC1, SNS RT1, SNS QT1, SNS QC1, SNS RC3, SNS RT3, SNS QT3, SNS QC3, SNS ACT RC3, SNS ACT RT3, SNS ACT QT3, SNS ACT QC3
- **Part Number:** 10172493
- **Date:** 220921
- **Safety Class:** II (SNS ... ACT ...), I (SNS ... T01 ...)
- **Protection Rating of Connection Compartment:** IP20
- **Protection Rating on Room Side:** IP44
- **Suitable for Further Wiring:** Max. total current 10 A at 1.5 mm<sup>2</sup>, Max. total current 16 A at 2.5 mm<sup>2</sup>

### • Safety Notes

- **WARNING!** Risk of electric shock! Never work with voltage applied.
- **WARNING!** Risk of electric shock! The light source of this luminaire shall only be replaced by the manufacturer or a service technician authorised by the manufacturer or a similar qualified person. If the light source malfunctions or fails, please contact TRILUX.
- **NOTICE.** Wear clean installation gloves to prevent soiling.
- **NOTICE.** Do not cover the product with insulating material.

### • Important Information on Electronic Control Gear Units (ECG)

- **Intended Use:** Suitable for further wiring.
- **Safety Class:** II (SNS ... ACT ...), I (SNS ... T01 ...)
- **Protection Rating of Connection Compartment:** IP20
- **Protection Rating on Room Side:** IP44
- **Max. Total Current:** 10 A at 1.5 mm<sup>2</sup>, 16 A at 2.5 mm<sup>2</sup>
- **Not suitable for further wiring:** SNS ... T01 ...

### • Disposal of Waste Electrical and Electronic Equipment

- Please ensure proper disposal of this product as waste electrical and electronic equipment.

### • Product Usage Instructions

- Read all instructions and mounting steps carefully before proceeding.
- Keep the instructions for maintenance or disassembly work.
- Observe and follow the warnings provided in the manual.
- Ensure that voltage is not applied while working on the product.
- If the light source malfunctions or fails, contact TRILUX or a qualified service technician authorized by the manufacturer for replacement.
- Wear clean installation gloves to prevent soiling.
- Do not cover the product with insulating material.

### • FAQ

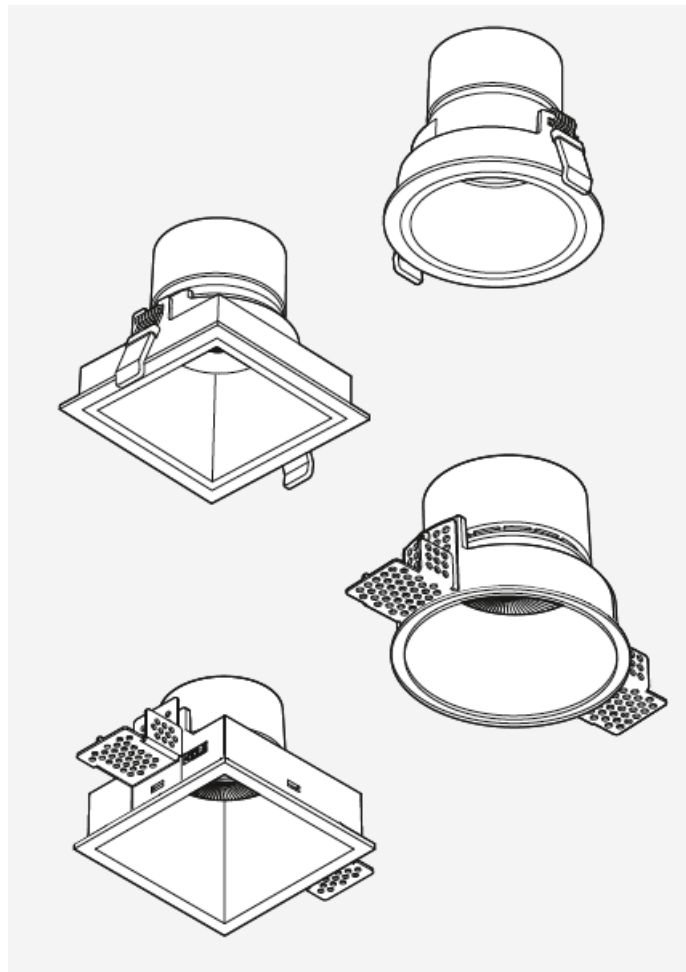
- **Q:** Can I replace the light source myself?
- **A:** No, the light source of this luminaire should only be replaced by the manufacturer or a service technician authorized by the manufacturer or a similar qualified person. Please contact TRILUX for assistance.
- **Q:** What should I do if the light source malfunctions or fails?
- **A:** If the light source malfunctions or fails, please contact TRILUX or a qualified service technician

authorized by the manufacturer for assistance.

## MODELS

### SONNOS LED

- SNS RC1 ...
- SNS RT1 ...
- SNS QT1 ...
- SNS QC1 ...
- SNS RC3 ...
- SNS RT3 ...
- SNS QT3 ...
- SNS QC3 ...
- SNS ACT RC3 ...
- SNS ACT RT3 ...
- SNS ACT QT3 ...
- SNS ACT QC3 ...



### For your safety

- Read all instructions and mounting steps carefully. Keep the instructions for maintenance or disassembly work.

## Explanation of the warning levels

Observe and follow the warnings. Non-observance of the warnings may lead to injuries or material damage!

- **WARNING!** Indicates dangers which can result in serious and/or fatal injuries.
- **CAUTION!** Indicates dangers which can result in injuries or health hazards.
- **NOTICE.** Indicates dangers which can result in material damage or malfunctions.
- **TIP.** Indicates information containing advice or a useful note.

## Explanation of Important Symbols

### Explanation of important symbols and pictograms



- Indicates professional personnel who are trained and authorised to carry out the electrical connection.



- Indicates professional personnel who are trained and authorised to carry out the mounting.

## Safety notes



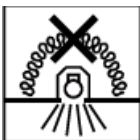
- **WARNING!** Risk of electric shock! Never work with voltage applied.



- **WARNING!** Risk of electric shock! The light source of this luminaire shall only be replaced by the manufacturer or a service technician authorised by the manufacturer or a similar qualified person. If the light source malfunctions or fails, please contact TRILUX



- **NOTICE.** Wear clean installation gloves to prevent soiling.



- **NOTICE.** Do not cover the product with insulating material.

## Important Information on Electronic

### Important information on electronic control gear units (ECG)

- A neutral conductor interruption in the three-phase circuit leads to overvoltage damage in the lighting system.

- Only open the neutral conductor isolating terminal in de-energised state, and close the neutral conductor isolating terminal before switching on again.
- Do not exceed the maximum permissible ambient temperature  $t_a$  of the luminaire.
- Exceeding this limit reduces the service life and in extreme cases there is a risk of premature failure of the luminaire.
- Design connection cables for the control inputs of DALI control gear (1-10 V, DALI etc.) to be 230 V mains voltage- proof (basic insulation).

## Intended use

- **Intended for indoor use with a maximum ambient temperature of:**  $t_a$  25 °C
- **Safety class:** II
- **Safety class:** I SNS ... ACT ...
- **Protection rating of connection compartment:** IP20
- **Protection rating on room side:** IP44
- **Suitable for further wiring. Max.** total current 10 A at 1,5 mm<sup>2</sup>.
- **Suitable for further wiring. Max.** total current 16 A at 2,5 mm<sup>2</sup>.
- **Not suitable for further wiring.** SNS ... T01 ...

## SONNOS LED

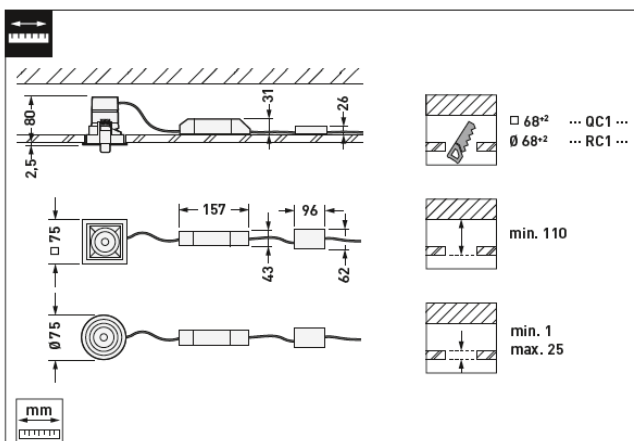
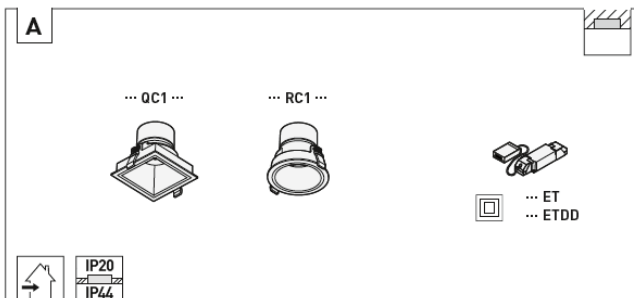
- Disposal of waste electrical and electronic equipment
- Always collect and dispose of old electrical and electronic equipment separately at the end of its service life.
- In case of doubt, seek information about environmentally- compliant waste disposal from your local district authority or special waste disposal companies.
- Current information on the energy efficiency class of the selected product version can be found in the corresponding data sheet for the luminaire.
- Instructions for replacing or removing the light source in accordance with Regulation 2019/2020/EU can be found at: [www.trilux.com/EcoDesign](http://www.trilux.com/EcoDesign).

## INSTALLATION



## SONNOS LED

| Type       | = kg |
|------------|------|
| SNS QC1... | 0,4  |
| SNS RC1... | 0,4  |



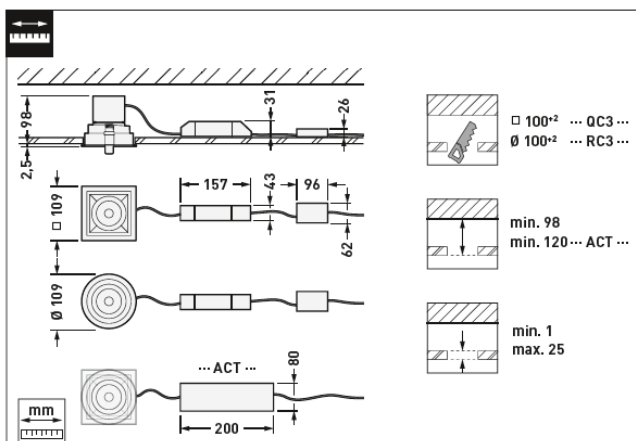
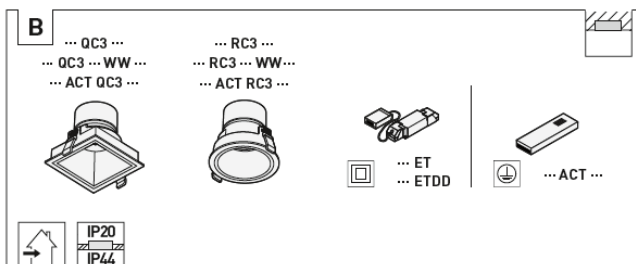
16 | 36

10172493 | 220921 | © trilux.com



## SONNOS LED

| Type           | = kg |
|----------------|------|
| SNS QC3...     | 0,6  |
| SNS RC3...     | 0,6  |
| SNS ACT QC3... | 1,1  |
| SNS ACT RC3... | 1,1  |



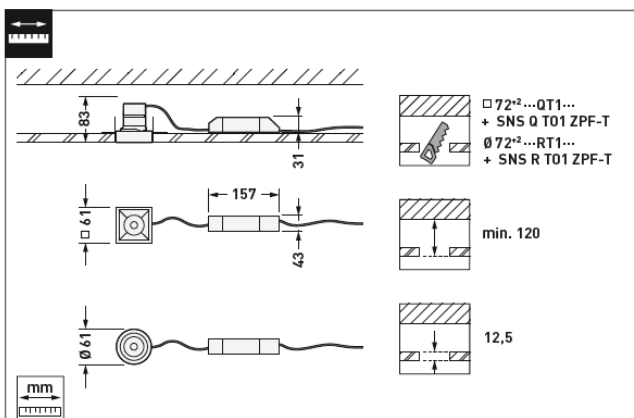
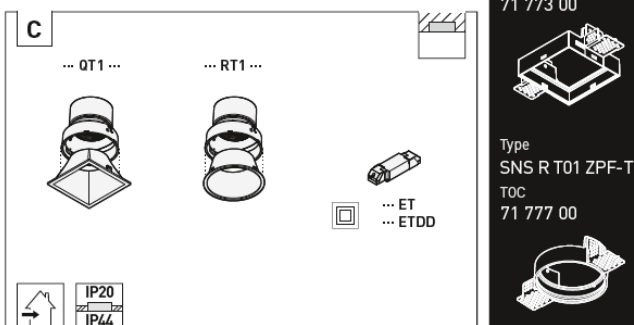
© trilux.com | 220921 | 10172493

17 | 36



## SONNOS LED

| Type       | = kg |
|------------|------|
| SNS QT1... | 0,5  |
| SNS RT1... | 0,5  |



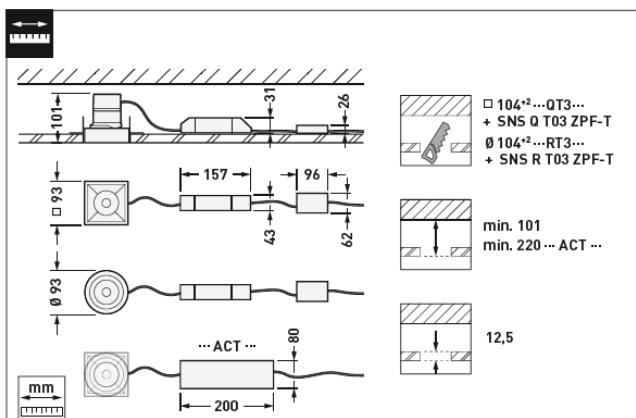
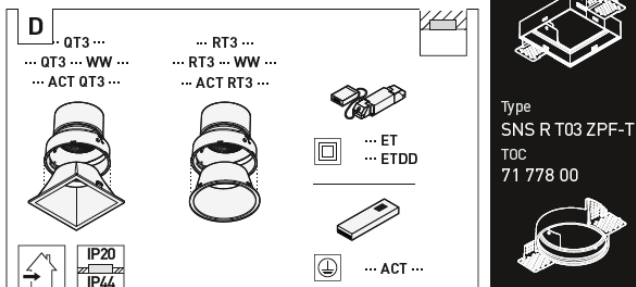
18 | 36

10172493 | 220921 | © trilux.com



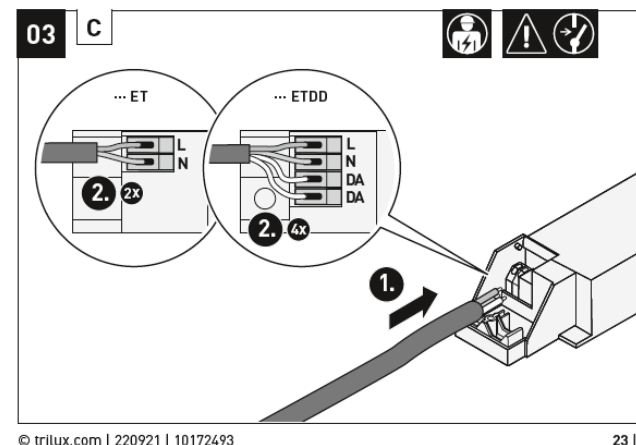
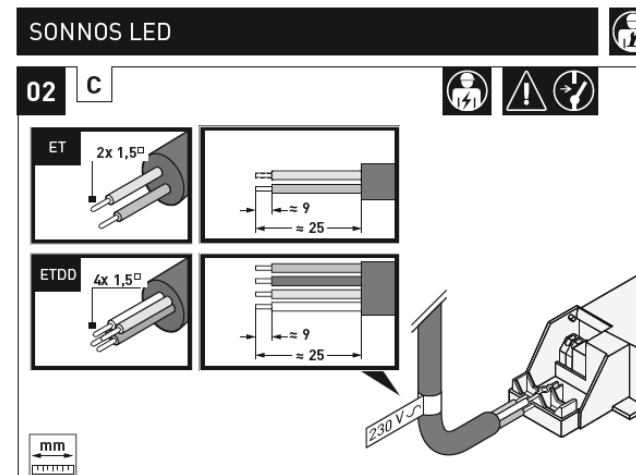
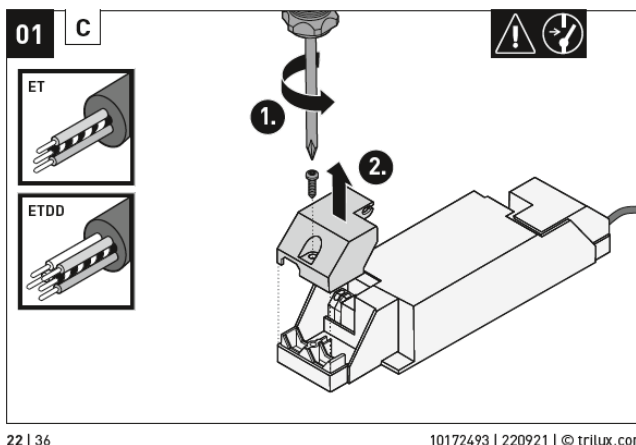
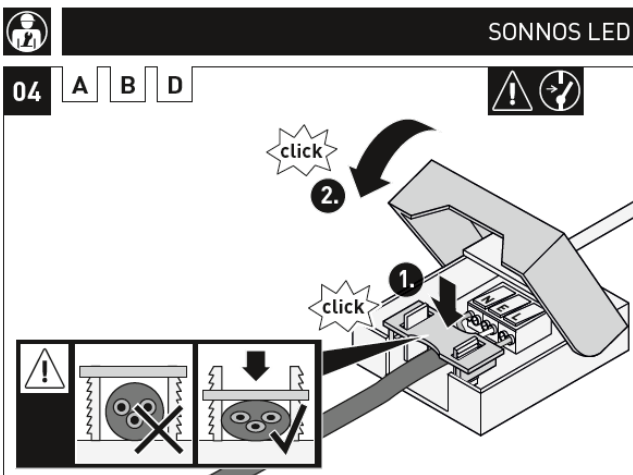
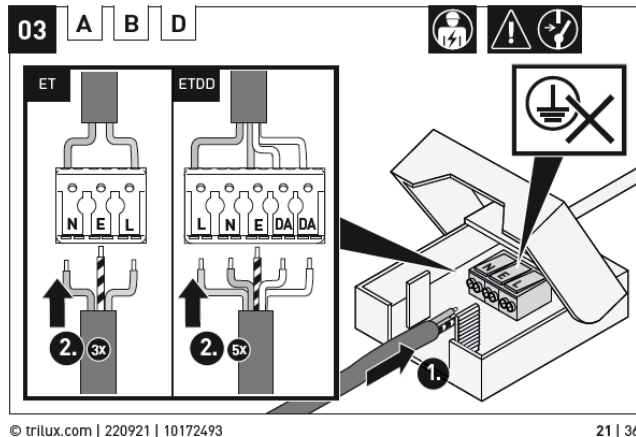
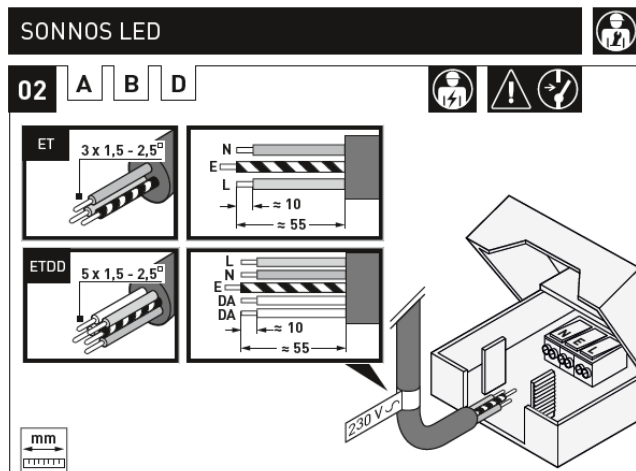
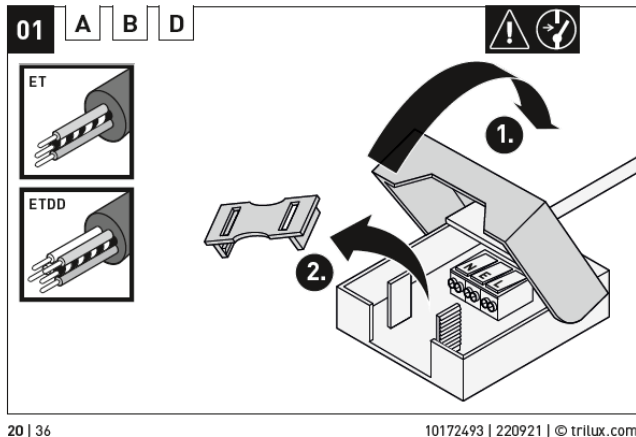
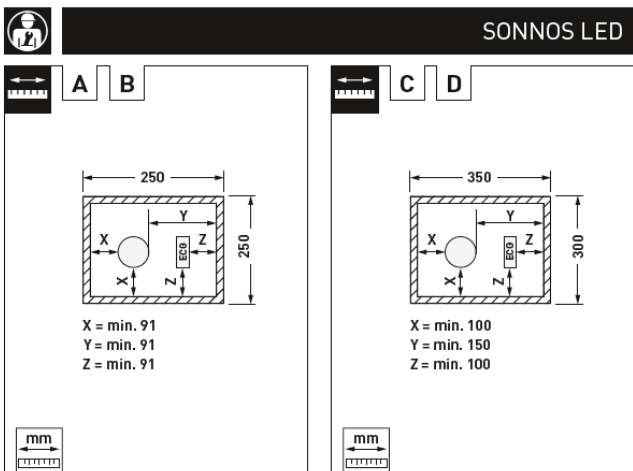
## SONNOS LED

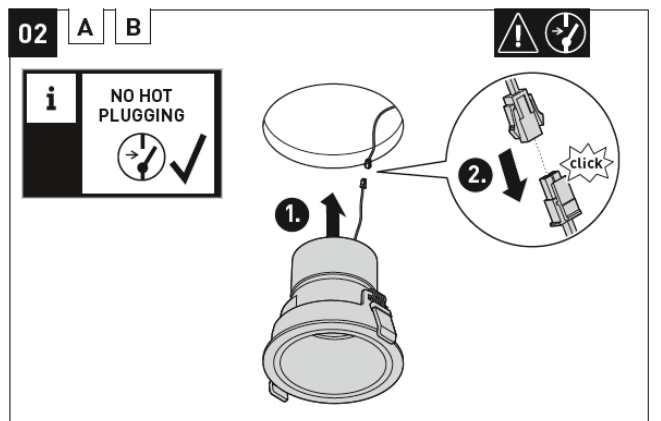
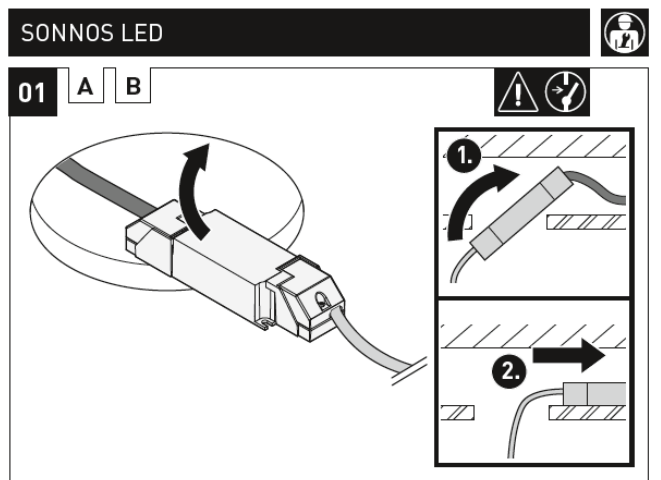
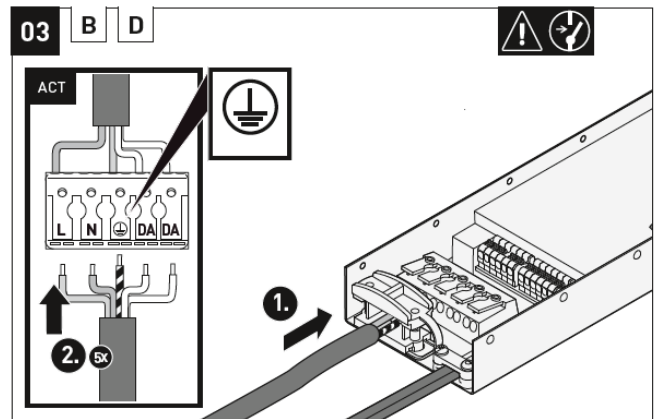
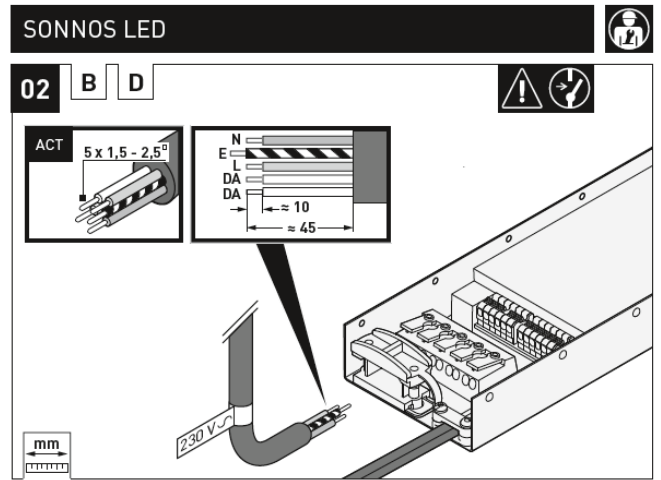
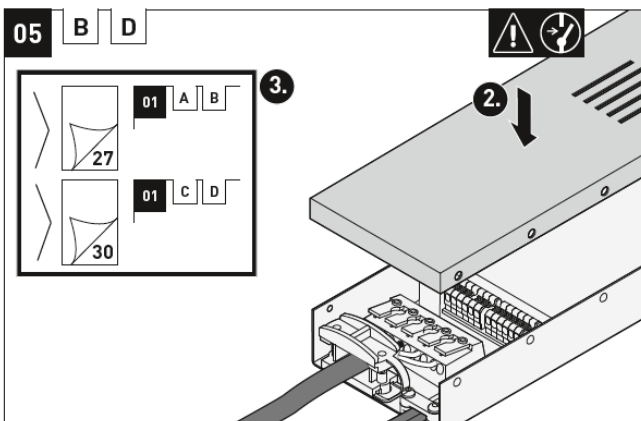
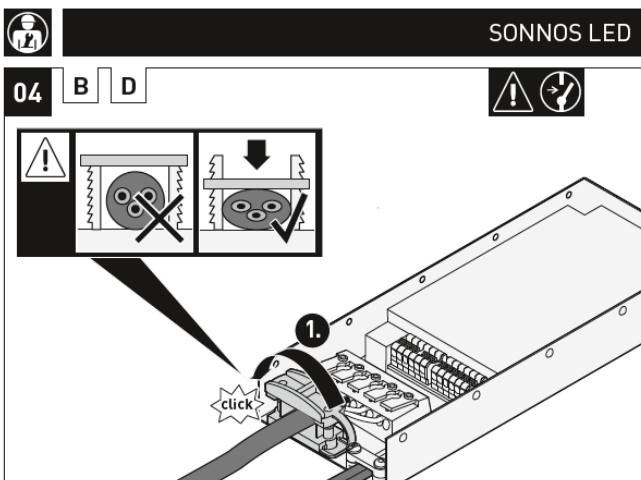
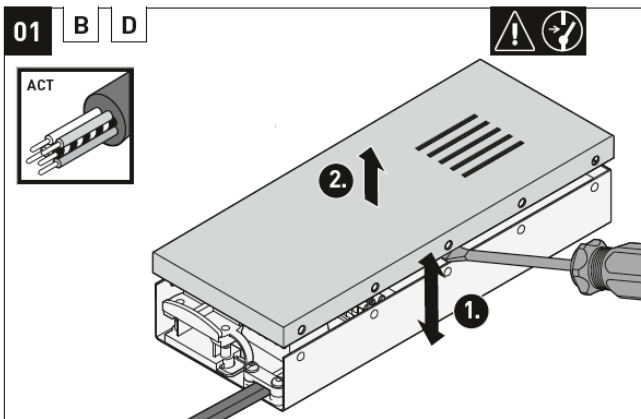
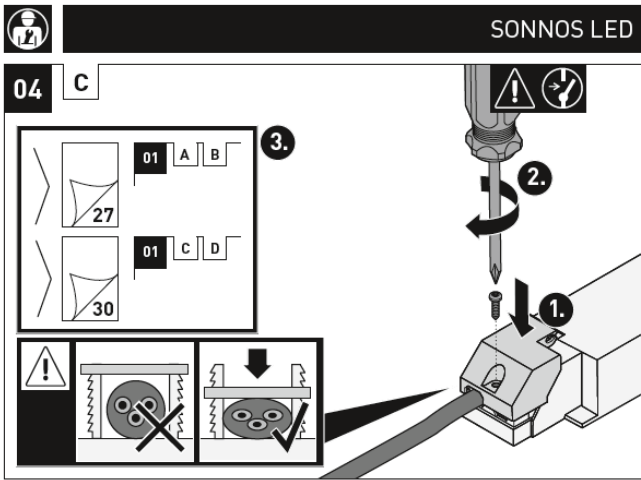
| Type           | = kg |
|----------------|------|
| SNS QT3...     | 0,7  |
| SNS RT3...     | 0,7  |
| SNS ACT QT3... | 1,2  |
| SNS ACT RT3... | 1,2  |



© trilux.com | 220921 | 10172493

19 | 36









## SONNOS LED

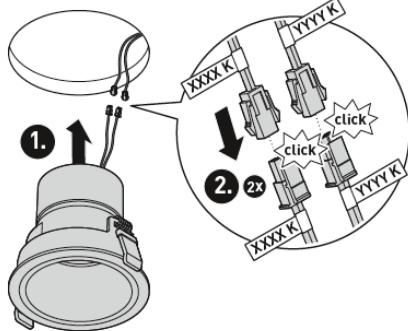
02

A B



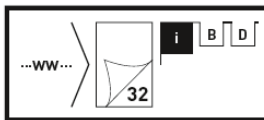
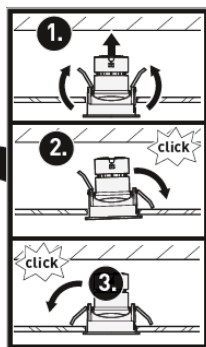
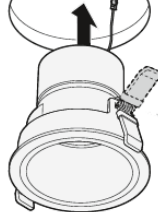
i

NO HOT PLUGGING



03

A B



28 | 36

10172493 | 220921 | © trilux.com

## SONNOS LED



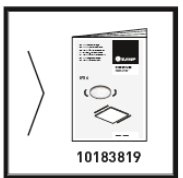
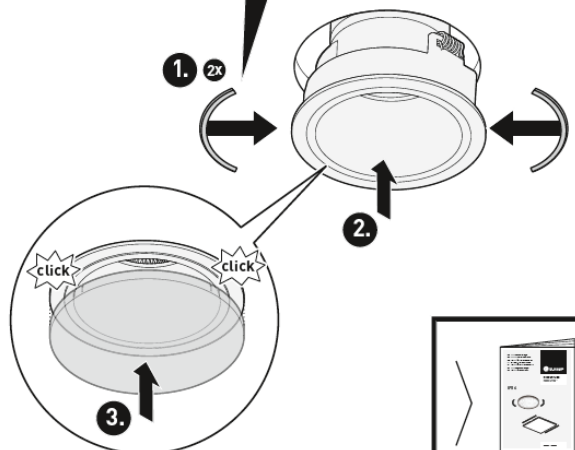
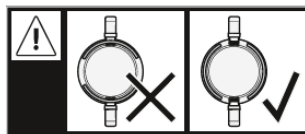
i

+ optional

A B



| Type                | TOC       |
|---------------------|-----------|
| SNS RC01 ZIP54-PC-T | 71 882 00 |
| SNS QC01 ZIP54-PC-T | 71 881 00 |
| SNS RC03 ZIP54-PC-T | 71 884 00 |
| SNS QC03 ZIP54-PC-T | 71 883 00 |



© trilux.com | 220921 | 10172493

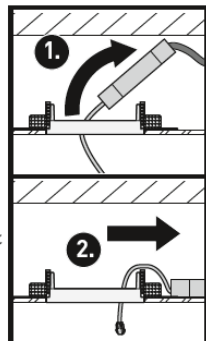
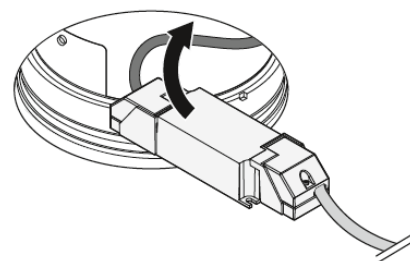
29 | 36



## SONNOS LED

01

C D



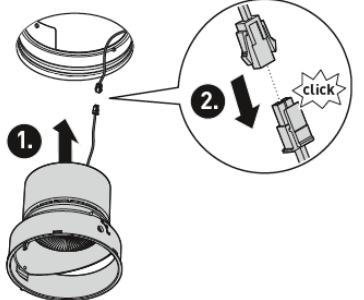
02

C D



i

NO HOT PLUGGING



30 | 36

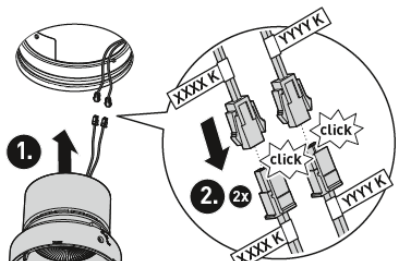
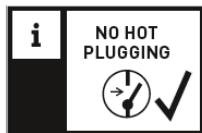
10172493 | 220921 | © trilux.com

## SONNOS LED



02

C D



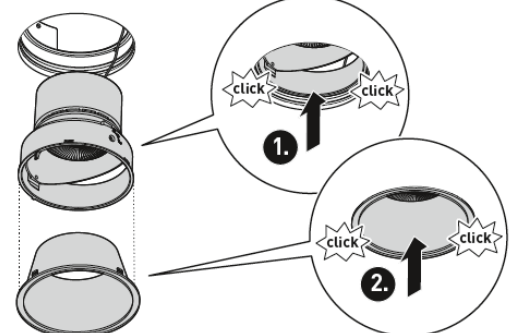
03

C D



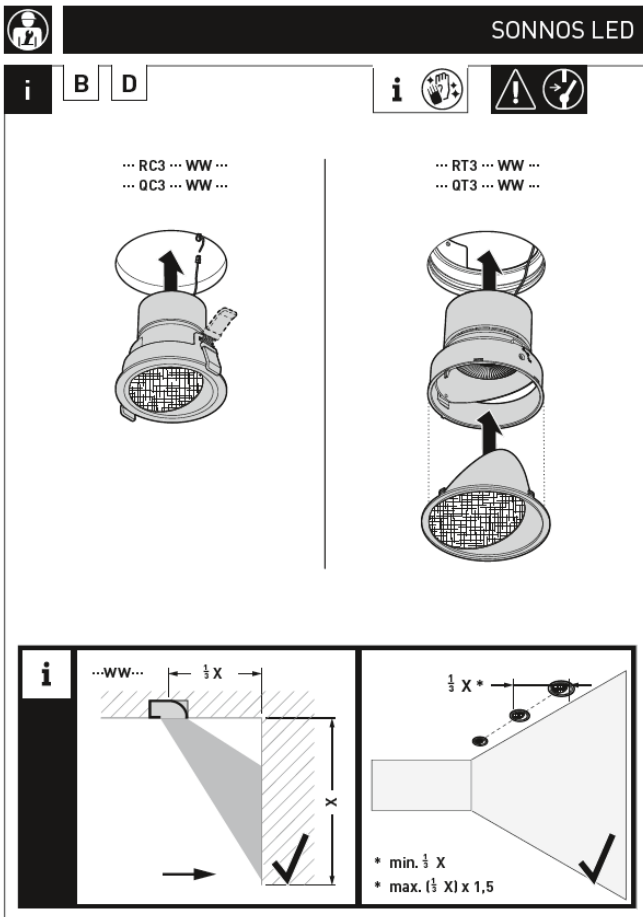
i

NO HOT PLUGGING



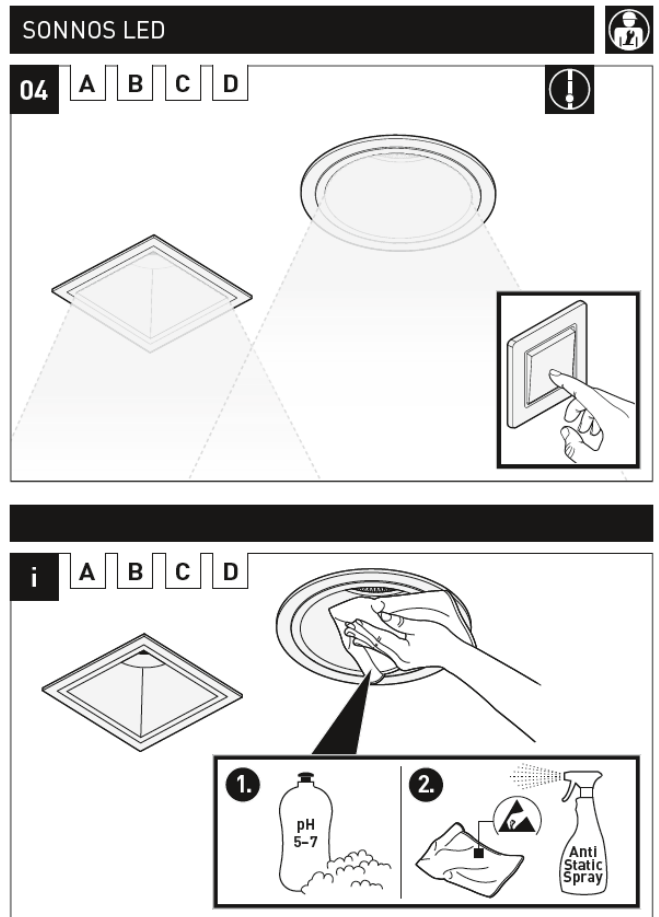
© trilux.com | 220921 | 10172493

31 | 36



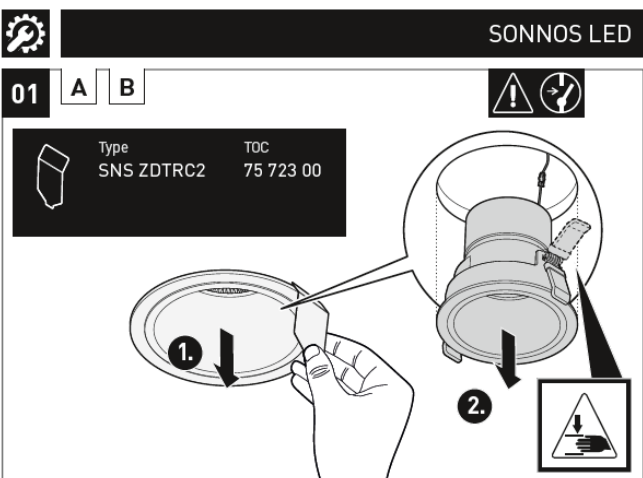
32 | 36

10172493 | 220921 | © trilux.com



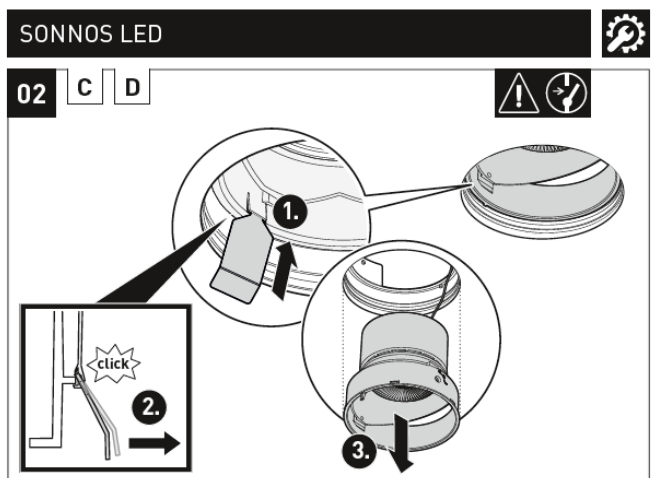
© trilux.com | 220921 | 10172493

33 | 36



34 | 36

10172493 | 220921 | © trilux.com



© trilux.com | 220921 | 10172493

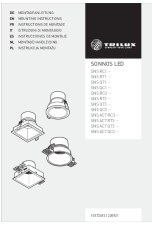
35 | 36

## CONTACT

- 10172493

- 220921
- © [trilux.com](https://www.trilux.com).
- © [trilux.com](https://www.trilux.com).
- 220921
- 10172493
- TRILUX GmbH & Co. KG
- Heidestraße
- D-59759 Arnsberg
- +49 2932 301-0
- [info@trilux.com](mailto:info@trilux.com).
- [www.trilux.com](https://www.trilux.com).
- 10172493 | 220921

## Documents / Resources

|  |  |
|--|--|
|  | <p><a href="#">TRILUX SNS RC1 LED Top Light</a> [pdf] Instruction Manual</p> <p>SNS RC1, SNS RT1, SNS QT1, SNS QC1, SNS RC3, SNS RT3, SNS QT3, SNS QC3, SNS ACT RC3, SNS ACT RT3, SNS ACT QT3, SNS ACT QC3, SNS RC1 LED Top Light, LED Top Light, Top Light, Light</p> |
|--|--|

## References

- [LED lighting & individual lighting solutions | TRILUX](#)
- [LED lighting & individual lighting solutions | TRILUX](#)
- [trilux.com/EcoDesign](https://www.trilux.com/EcoDesign)
- [User Manual](#)