



trifo Max-S Without Mopping Max Robot Vacuum Cleaners User Guide

[Home](#) » [trifo](#) » trifo Max-S Without Mopping Max Robot Vacuum Cleaners User Guide 

Contents

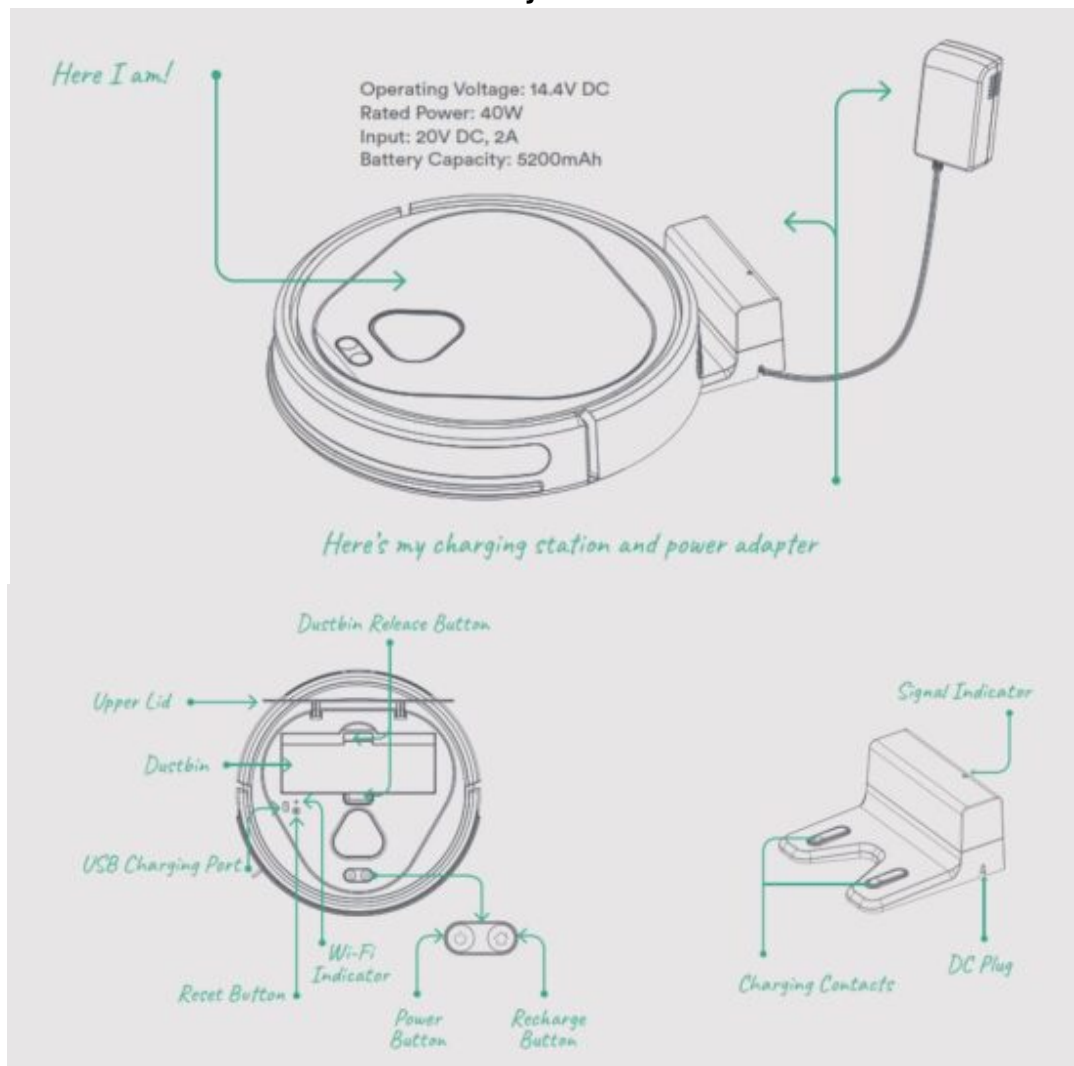
- 1 trifo Max-S Without Mopping Max Robot Vacuum Cleaners
- 2 Meet the New Smartest Member of Your Family
- 3 Here's How to Start Me Up
- 4 How to bet a Charge Out of Me
- 5 Let's Make a Clean Sweep!
- 6 Indicator Lights
- 7 Mopping
- 8 When I Get Full Tip Me Over and Dump Me
- 9 I Need a Clean Brush, Just Like You
- 10 Keep Me Running Smoothly
- 11 Instructions
- 12 MAINTENANCE
- 13 POWER
- 14 WARRANTY
- 15 Documents / Resources
 - 15.1 References
- 16 Related Posts

trifo

trifo Max-S Without Mopping Max Robot Vacuum Cleaners



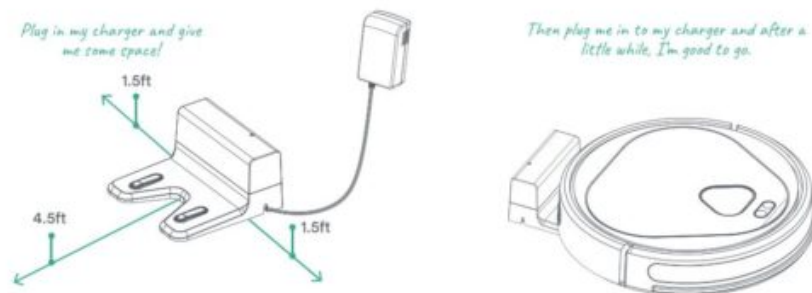
Meet the New Smartest Member of Your Family



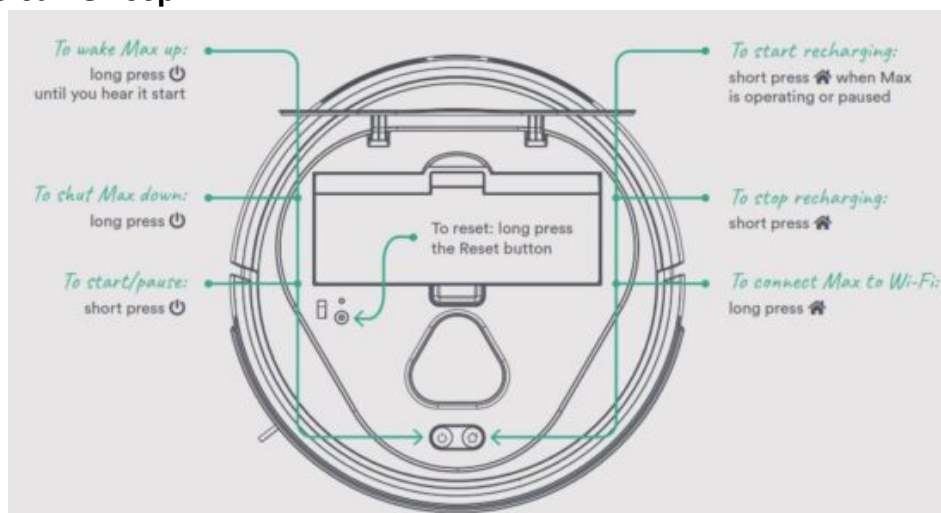
Here's How to Start Me Up



How to get a Charge Out of Me



Let's Make a Clean Sweep!



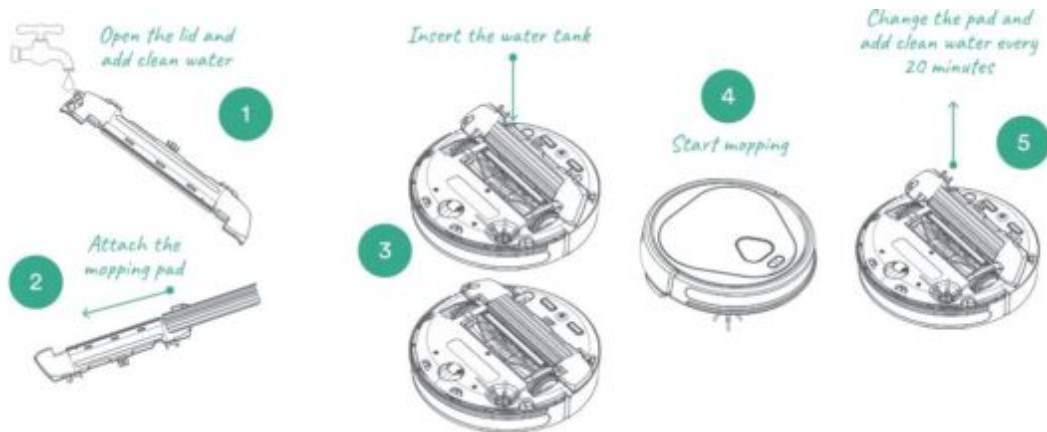
Indicator Lights

Indicator Light / What it Means

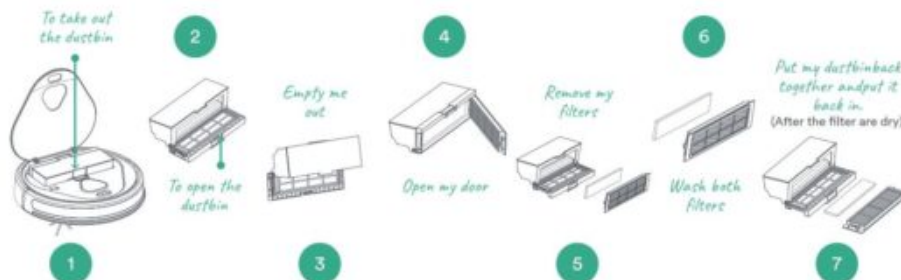
- **Power: solid white** : Robot is operating
- **Power: solid red** : Robot is not functioning
- **Power: slow flashing white** : Robot is booting up
- **Power: blinking white** : Robot is upgrading or resetting
- **Recharge: solid green** : Surveillance camera is on
- **Recharge: blinking green** : Motion detection is on

- 🏠 **Recharge: solid orange (+ 🔌 Power: slow flashing red)** : Battery is low
- 🏠 **Recharge: slow flashing orange**: Robot is returning to the charging base
- 🏠 **Recharge: slow flashing orange (+ 🔌 Power: off)**: Battery is charging
- 🏠 **Recharge: solid orange (+ 🔌 Power: off)**: Battery is fully charged
- 📶 **Wi-Fi: solid blue** : Robot is connected
- 📶 **Wi-Fi: blinking blue**: Robot is connecting
- 📶 **Wi-Fi: off** : Robot is no connected

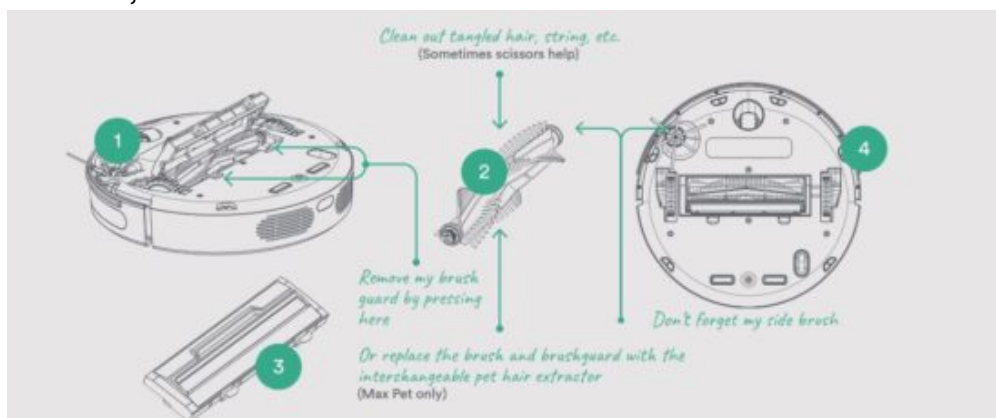
Mopping



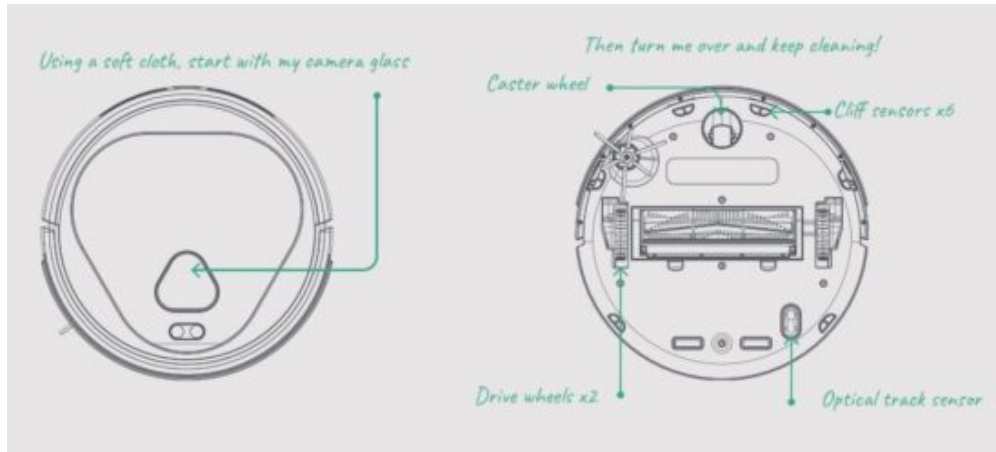
When I Get Full Tip Me Over and Dump Me



I Need a Clean Brush, Just Like You



Keep Me Running Smoothly



Instructions

SAFETY INSTRUCTIONS

Before using this product, please read and follow all the following safety instructions, and keep this manual for future reference. Any operation inconsistent with this instruction manual may cause damage to this product.

HARMFUL SUBSTANCES

Harmful substances such as lead, mercury, cadmium, hexavalent chromium, polybrominated biphenyls (PBBs), polybrominated diphenyl ethers (PBDEs) and phthalates such as bis (2-ethylhexyl) phthalate (DEHP), butyl benzyl phthalate (BBP), dibutyl phthalate (DBP), and diisobutyl phthalate (DIBP) comply with the limits as set by RoHS Directive (EU) 2015/863 amending Annex II to Directive 2011/65/EU.

EXECUTIVE STANDARD

- IEC 60335-2-2: 2019 | IEC 60335-1: 2010 + A1:2013+ A2: 2016
- EN 60335-2-2: 2010+ A11: 2012 + A1: 2013 | EN 62233: 2008
- EN 60335-1: 2012 + A11: 2014 + A13: 2017 + A1: 2019 + A14:2019 + A2: 2019

Please note that changes or modification not expressly approved by the party responsible for compliance could void the user's authority to operate the equipment. This device complies with part 15 of the FCC rules. Operation is subject to the following two conditions:

1. This device may not cause harmful interference.
2. This device must accept any.

interference received, including interference that may cause undesired operation.

This equipment complies with FCC radiation exposure limits set forth for an uncontrolled environment. This equipment should be installed and operated with minimum distance 20 cm (7.8 inches) between the radiator and your body.

CAUTION

1. The robot vacuum-mop is for indoor use only.

2. Do not disassemble the robot or replace the battery by yourself. Please contact Support for the replacement.
3. Only use the power adapter provided by the manufacturer.
4. Do not touch the outlet and power adapter when your hands are wet.
5. Do not place the robot near cigarette butts, lighters and other smoldering fires.
6. Do not bend wires excessively or place heavy or sharp objects on the robot.
7. Do not sit on the robot.
8. Do not run the robot in wet and humid environments.
9. Do not use the robot near any source of heat or open flame.
10. Remove small or fragile objects from the cleaning area before use.
11. Do not place the robot on a table or a chair where it might fall off.
12. Please check whether the power adapter is connected to the outlet before use.
13. Please inform family members when it starts operating to prevent them from tripping over the product.
14. Please empty the dustbin when it is full.
15. Please operate at room temperature. Do not expose the product or its batteries to freezing or extreme heat (above 40°C/104°F or below 0°C/32°F).
16. Do not press or scratch the glass window with hard objects.
17. Do not run the robot when the upper lid is open.
18. Move power cords as well as cords for blinds and curtains out of the way to reduce the risk of objects being pulled down.
19. Do not use the robot to pick up large debris, liquid spills, bleach, paint, petrol, or any flammable materials such as cigarettes, matches, and ashes.
20. Do not block the exhaust port of the robot. Keep exhaust port free of lint, hair and other matter.
21. Stop using the product if the charging station is damaged.
22. Do not burn the product. It can lead to battery explosions.
23. The HEPA filter is washable and must be dried before use.
24. Do not place the full water tank in the upright position to prevent water leaks.
25. Do not mop on carpets.
26. Remove the water tank before docking.
27. Do not scratch the camera and lenses. Clean the lenses with a soft cloth every week.
28. This appliance can be used by children aged from 8 years and above and persons with reduced physical, sensory or mental capabilities or lack of experience and knowledge if they have been given supervision or instruction concerning use of the appliance in a safe way and understand the hazards involved. Children shall not play with the appliance. Cleaning and user maintenance shall not be made by children without supervision. Children should be supervised to ensure that they do not play with the appliance.
29. Do not operate the vacuum in a room where an infant or child is sleeping.
30. Do not operate the vacuum in an area where there are lit candles or fragile objects on the floor to be cleaned.
31. Do not operate the vacuum in a room that has lit candles on furniture that the vacuum may accidentally hit or bump into.
32. The battery is a non-user-replaceable battery. The appliance contains a battery that is only replaceable by a skilled person.

MAINTENANCE

1. Turn the power off and wipe it clean before you store the product. Charge it at least once in three months even if

you don't use the product.

2. It is recommended to clean the hair and debris stuck on the wheels every week.
3. It is recommended to clean the main brush every week, and replace it every 6 to 12 months.
4. It is recommended to clean the side brush every month, and replace it every 3 to 6 months.
5. It is recommended to wash the dustbin every other week. Please dry the dustbin before you put it back.
6. Clean the lenses with a soft cloth every week.

POWER

- **Operating Voltage:** 14.4V DC
- **Rated Power:** 40W
- **Input:** 20V DC, 2A
- **Battery Capacity:** 5200mAh

WARRANTY

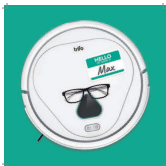
Trifo robot vacuums have a one-year limited warranty that covers manufacturing defects in materials and workmanship that might occur during normal use of your robot. In the case of the battery, a warranty period of six (6) months shall apply. All limited warranties begin on the date of purchase.

TRIFO INC.

Designed in California & Made in China 4699 Old Ironsides Dr. Suite 390 Santa Clara, CA 95054 Shenzhen Trifo Technology Co.,Ltd. Room 201, Building A, No.1, Qianwan Road 1, Qianhai Shenzhen-Hong Kong Cooperation Zone, Shenzhen, China

For more information, please visit www.trifo.com

Documents / Resources

	<p>trifo Max-S Without Mopping Max Robot Vacuum Cleaners [pdf] User Guide</p> <p>Max-S Without Mopping, Max Robot Vacuum Cleaners, Max-S Without Mopping Max Robot Vacuum Cleaners</p>
---	--

References

-  [Trifo Lucy AI Home Robot Vacuum Cleaner | Clean with Love](#)