



TRIDONIC basicDIM Wireless User Interface User Guide

[Home](#) » [TRIDONIC](#) » TRIDONIC basicDIM Wireless User Interface User Guide 

Contents

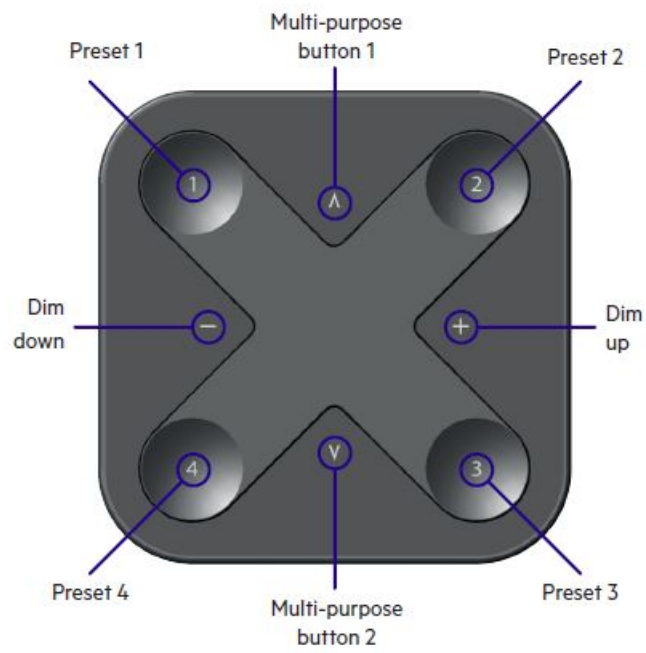
- [1 TRIDONIC basicDIM Wireless User Interface](#)
- [2 OVERVIEW](#)
- [3 ASSEMBLY](#)
 - [3.1 Install wall mount](#)
- [4 Documents / Resources](#)
- [5 Related Posts](#)

TRIDONIC

TRIDONIC basicDIM Wireless User Interface



OVERVIEW

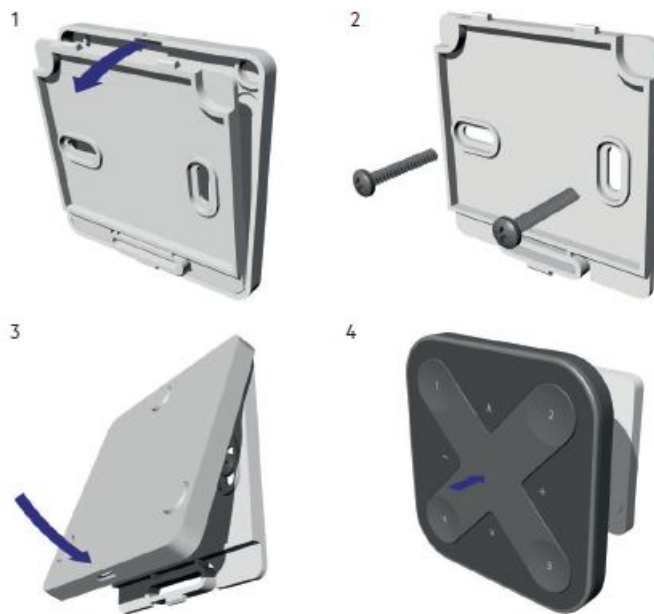


ASSEMBLY

Pull the tab off



Install wall mount



Open Tridonic 4remote BT App



- Hereby, Tridonic declares that the radio equipment type basicDIM Wireless User
- Interface is in compliance with Directive 2014/53/EU.
- Hereby, Tridonic declares that the radio equipment type basicDIM Wireless User
- Interface is in compliance with Directive UK SI 2017 No. 1206.
- The full text is available at the following internet address:

<https://trid.help/en28002213cer>

<https://trid.help/en28002420cer>

Press any button and take into use



Documents / Resources



[TRIDONIC basicDIM Wireless User Interface](#) [pdf] User Guide
basicDIM Wireless User Interface, basicDIM, Wireless User Interface, User Interface, Interface

[Manuals+.](#)