



TRIANGLE HIFI BOREA BT Wireless Bluetooth Bookshelf Speaker Owner's Manual

[Home](#) » [TRIANGLE HIFI](#) » TRIANGLE HIFI BOREA BT Wireless Bluetooth Bookshelf Speaker Owner's Manual



BOREA BT Wireless Bluetooth Bookshelf Speaker Owner's Manual



Contents

- 1 BR03BT Wireless Bluetooth Bookshelf Speakers
- 2 INSTALLATION PRECAUTIONS
- 3 DESCRIPTION OF THE REMOTE
- 4 OPTIONS ON THE REMOTE CONTROL
- 5 ENCEINTES BOREA BT /BOREA BT SPEAKERS
- 6 SAFETY INSTRUCTIONS
- 7 GARANTIE / WARRANTY
- 8 Documents / Resources
 - 8.1 References
- 9 Related Posts

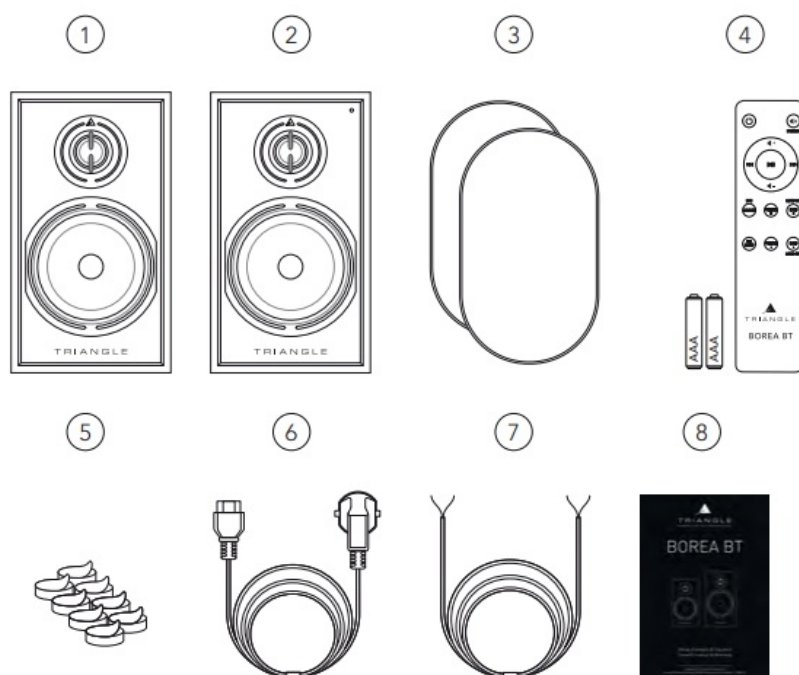
BR03BT Wireless Bluetooth Bookshelf Speakers

BOREA BR02BT, BOREA BR03BT, TEA02-C, TEA02-B, TEA02-AZ, TEA02-BB, TEA02-BA, TEA03-C, TEA03-B, TEA03-AZ, TEA03-BB, TEA03-BA, TEA04-C, TEA04-B, TEA04-AZ, TEA04-BB, TEA04-BA

UNPACKING

Open the box and take out the speakers and accessories. If you notice any defects in one of the elements as you unpack, please get in touch with your reseller.

Before disposing of the packaging, make sure there is nothing left inside



Included in the box :

- 1. 1 x passive loudspeaker BOREA BT
- 2. 1 x active loudspeaker BOREA BT (indicator light on the front)
- 3. 2 x protection grills
- 4. 1 x remote control, incl. 2 AAA batteries
- 5. 8 x adhesive anti-slip feet to place below the speakers
- 6. 1 x AC power cord

7. 1 x 3 meters speaker cable to link the loudspeakers
8. 1 x user manual

INSTALLATION PRECAUTIONS

Before the installation

Before making any connections, turn off the devices. Be sure to always set the active speaker switch to OFF before removing or plugging connection cables. Do not plug in the power cord before all connections are made.

Moving the device

Always remove the power cord and disconnect the cables between all components when moving the device. This will prevent a short-circuit or damage to the plugs or connection cables.

Before turning on the device

Check one last time if all the connections are correct.

Locations to avoid

Install your speakers in a temperate place and avoid humid locations or direct sunlight.

Recycling

Protection of the environment: your products contain valuable materials which can be recovered or recycled. Take them to the appropriate collection points



CAUTION

Use the Product in the environment with a temperature Between -10°C/ 14°F and 40°C/104°F; otherwise, it may damage your product.

For the following equipment

Product Name: Borea Bluetooth Speaker

Brand Name: TRIANGLE

Model No.: BOREA BR02 BT, BOREA BR03 BT, TEA02-C, TEA02-B, TEA02-AZ, TEA02-BB, TEA02BA, TEA03-C, TEA03-B, TEA03-AZ, TEA03-BB, TEA03-BA, TEA04-C, TEA04-B, TEA04-AZ, TEA04BB, TEA04-BA.

TRIANGLE Hi-Fi (E-mail: info@trianglehifi.com) hereby declares that this Borea Bluetooth Speaker, Model: BOREA BR02 BT, BOREA BR03 BT, TEA02-C, TEA02-B, TEA02-AZ, TEA02-BB, TEA02-BA, TEA03-C, TEA03-B, TEA03-AZ, TEA03-BB, TEA03-BA, TEA04-C, TEA04-B, TEA04-AZ, TEA04BB, TEA04-BA are in compliance with Radio Equipment Regulations 2017 (SI 2017 No. 1206, as amended by SI 2019 No. 696).



The full text of the UK declaration of conformity is available at the internet address: <https://www.trianglehifi.com/en/uk-declaration-of-conformity/>

The RF distance between body and product is 0mm

Bluetooth Version: Bluetooth V5.0 (Only EDR)

Frequency Range: 2402-2480MHz

Max.RF Output Power: 7.41dBm (EIRP)

2.4GHz

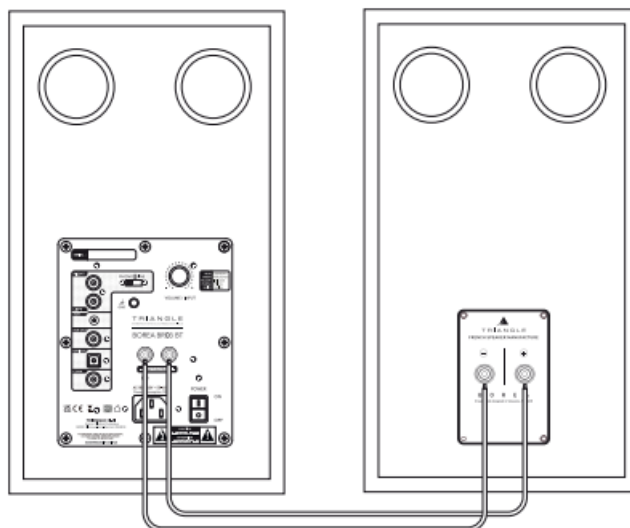
Frequency Range: 2464MHz Receiving

CONNECTING THE SPEAKERS

The speakers must be interconnected with the speaker cable provided. (White cable mentioning “High purity OFC Copper cable”).

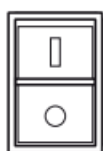
Ensure that the speaker connection polarity is correct: The red and black terminals on the passive and active speakers must be connected respectively to one another. To help with the set-up, the connection cable indicating “TRIANGLE High purity OFC Copper cable” is dedicated to the red terminal (+).

The active speaker is the right channel of the stereo pair and the passive speaker is the left one.
Make sure to always place the active speaker on the right when the speakers are facing the listener.



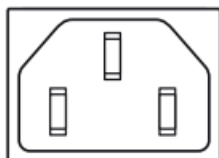
Powering On

Once you have checked the amplifier on the active speaker is set to the “OFF” position, plug the power cord into the designated input and into an AC power outlet. The speakers are then ready for use and can be turned on.

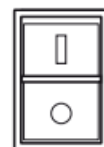


OFF

①



②

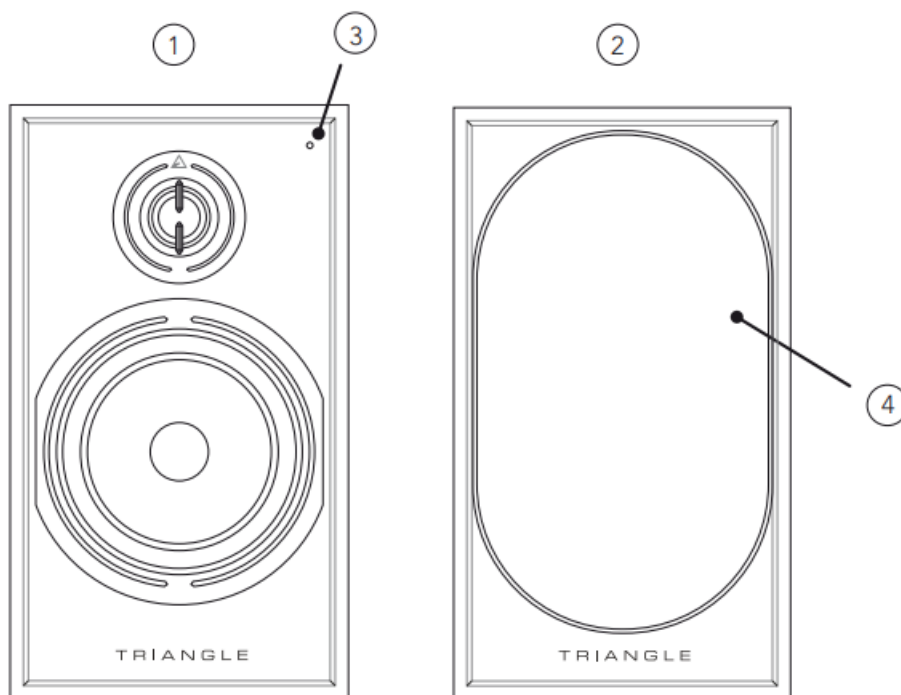


ON

③

DESCRIPTION OF THE SPEAKER (FRONT PANEL)

1. Active speaker
2. Passive speaker
3. Source indication :
 - Blue LED: Bluetooth
 - Green LED: RCA
 - Yellow LED: 3.5 mm mini-stereo jack
 - Purple LED: Optical
 - White LED: Coax
4. Magnetic protection grill*



* For optimal use and perfect sound reproduction, it is recommended to remove the magnetic grills when listening.

DESCRIPTION OF THE SPEAKER (REAR PANEL)

Rotate: volume control

Press the button: switching sources

Blue LED: Bluetooth

Green LED: RCA

Yellow LED: Mini-stereo Jack

Purple LED: Optical

White LED: Coax

1. RCA signal type (Line/Phono)

2. RCA input

3. Auxiliary input (3.5 mm mini-stereo Jack)

4. Subwoofer output

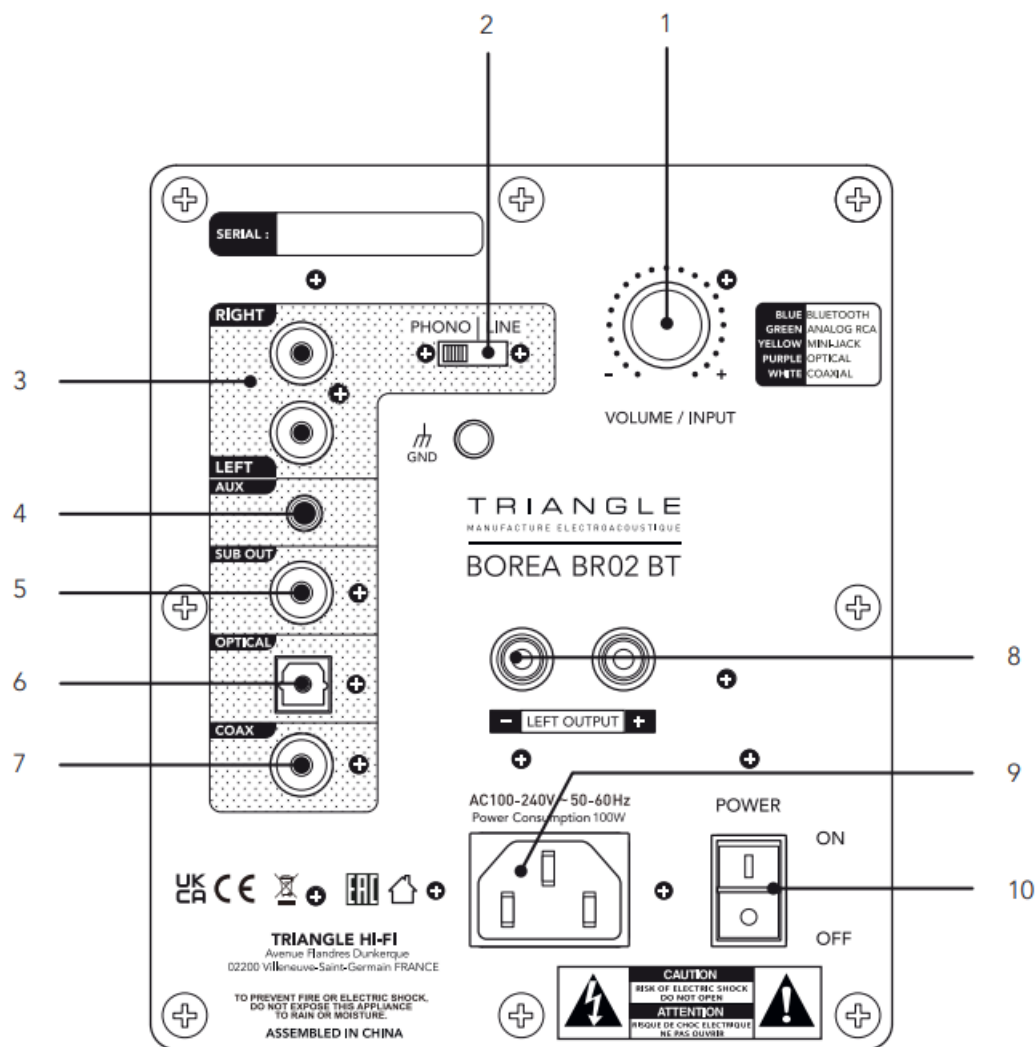
5. Optical input (For stereo signal only)

6. Coaxial input (For stereo signal only)

7. Terminal of the passive speaker

8. AC outlet

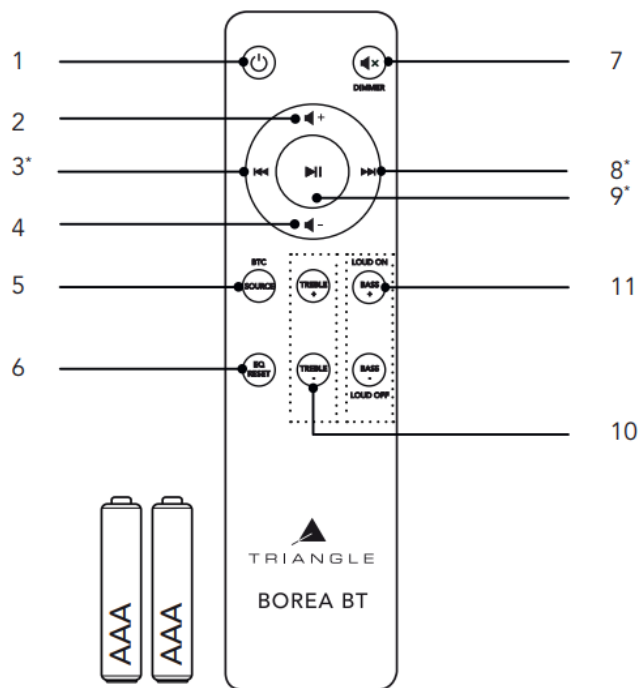
9. Power switch



DESCRIPTION OF THE REMOTE

The remote control operates via radio waves. You don't need to point it towards the BOREA BT speakers to control them.

<ol style="list-style-type: none"> 1. Power on / Standby 2. Increasing the volume 3. Previous Track* 4. Turning volume down 5. Change input / «BTC»¹ <p>The «BTC» function allows you to disconnect the currently connected BT source:</p> <ul style="list-style-type: none"> – Quickly pressing the button:: Source selection 	<ul style="list-style-type: none"> – Pressing and holding for 3 seconds the button: Disconnect the Bluetooth source 6. Reset bass and treble adjustment 7. Mute / «Dimmer»² 8. Next Track* 9. Play/pause a track* 10. Decreasing or increasing the treble 11. Decreasing or increasing bass / Turning ON or OFF «Loudness»³
---	--



* Only with Bluetooth (1) (2) (3)
See the indications on the next page

REMOTE CONTROL

Model: TEA02-C, TEA02-B, TEA02-AZ, TEA02-BB, TEA02-BA, TEA03-C, TEA03-B, TEA03-AZ, TEA03-BB, TEA03-BA, TEA04C, TEA04-B, TEA04-AZ, TEA04-BB, TEA04-BA

Frequency Range: 2464MHz 2.RF

Output Power: 3.87dBm (EIRP)

OPTIONS ON THE REMOTE CONTROL

1- DIMMER

The DIMMER function allows you to deactivate the indicator light on the front of the active speaker. Press and hold the «MUTE» button for 3 seconds. The indicator light will only blink when using the remote control. It will also be active when the speakers are in standby mode.

2- LOUDNESS

At low volumes, we hear the low frequencies differently than at medium or high volumes. This function balances the low frequencies at low volume and adapts gradually when the volume changes. It is particularly recommended when listening to ambient music. The LOUDNESS function adapts to the speaker volume.

3- BTC

This function allows you to disconnect a Bluetooth source to connect a new one. To do so, press and hold the button for more than 3 seconds to activate this function when using the Bluetooth input of the BOREA BT. The indicator light on the front panel should now blink blue. You can use your smartphone, tablet, or computer to select the BOREA BT in the list of available Bluetooth devices.

PAIRING PROCEDURE

The remote control for your BOREA BT speaker is radio-controlled and factory-paired with the speaker. If the remote is not working or if you have a new one, you need to pair the remote control. Please turn ON the speaker with the back panel switch and wait for 3 seconds. Press continuously «EQ reset» button on the remote for 5 seconds while watching the speaker LED on the front panel. This LED will blink a couple of times after successful pairing (within a few seconds).

CONNECTING SOURCES

The BOREA BT speakers can be paired with a variety of sources. Here are the various options:

Connection via Bluetooth



This connection enables you to send music without a cable thanks to the latest Bluetooth 5.0 aptX HD technology. AptX is a coding that allows you to transmit music via Bluetooth with a sound quality close to that of a CD to your BOREA BT speakers. The reach is approximately 10 meters, according to the environment and the obstacles met.

The BOREA BT speakers let you play music from any Bluetooth-enabled sources: smartphone, tablet, computer... To do so:

- ▶ Slide the power switch on the back to the ON position to activate your BOREA BT speakers
- ▶ Select the «Bluetooth» input using the «VOLUME/INPUT» button on the back of the speaker or the «SOURCE» button on the remote control. The indicator light should blink blue until a Bluetooth source (your phone, tablet, computer, etc.) is connected.
- ▶ When you search on your Bluetooth device (refer to the device's user manual if needed), the speakers should appear under the name «TRIANGLE BOREA 02» or «TRIANGLE BOREA 03», you can then connect to them. Your speakers are now linked to your Bluetooth device and will reproduce the sound from the device. The connection will be done automatically next time you switch on your speakers if your Bluetooth device is available.
- ▶ If you want to connect a new Bluetooth device while the previous one is still connected, please turn OFF the Bluetooth of the first Bluetooth device or disconnect it directly on the Bluetooth menu of your device. The connection will be done automatically next time you switch ON your speakers if Bluetooth is selected or if your Bluetooth device is closed to the speakers.
- ▶ With the remote control of the BOREA BT, you can change track, play, and pause the speakers when using Bluetooth. (See page 25)
- ▶ You can change the volume of the BOREA BT from your Bluetooth source using the physical buttons on your device or directly from the music app used.
- ▶ When connecting a Bluetooth device with volume control, be careful of the volume level. If the level is too low, the BOREA speakers will not be audible. We recommend setting the volume of your Bluetooth device to three quarters, to begin with, and adjusting with the remote control of the BOREA BT or your Bluetooth device.

Wired connection



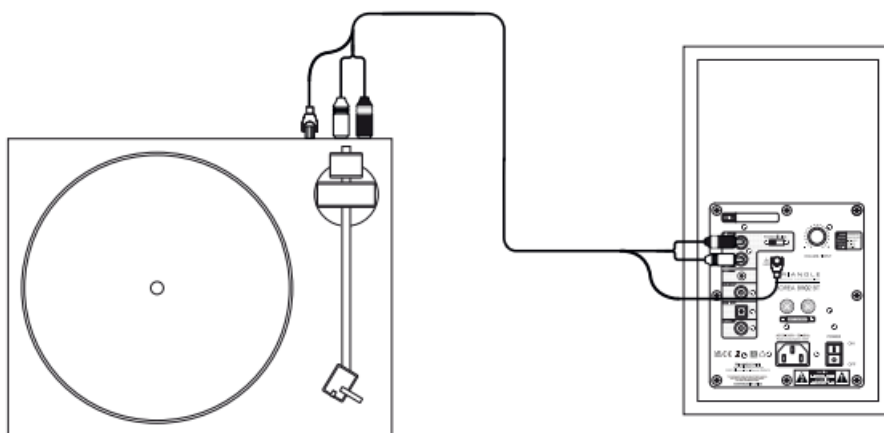
The RCA input enables you to connect your speakers to your television, CD player, turntable, or other devices. To do so:

- ▶ Plug the red and white connectors into «RCA INPUT» on the back of the speaker, following the colors, and do the same on the source.
- ▶ Select the «RCA» input using the remote or the «VOLUME/INPUT» button on the back of the active speaker (the order in which the sources need to be selected is indicated above the «INPUT» button). The green LED indicates that the source is connected to the «RCA» input. Check that the selector is on «LINE». Your system is ready to operate.

Connecting a turntable

When connecting a turntable, the BOREA speaker **MUST be powered off**.

If you connect a turntable, place the «PHONE/LINE» selector on PHONO. Connect the ground cable connector to the designated terminal on the back of your amplified speaker and on your turntable.



Connection via a 3.5mm mini-jack cable



A 1/8-inch (3.5mm) jack cable (included) enables you to connect your speakers to many devices: smartphone, audio player, tablet, computer, television... To do so:

- Plug one end of the jack connector into the «AUX» terminal and the opposite end into your device.
- Select the AUX input using the «VOLUME/INPUT» button (on the back of the powered speaker) or the SOURCE button on the remote control.
- The yellow light indicates that the source is connected to the «AUX» input. Your system is ready to operate.

Connection via an optical cable*



The optical input enables you to connect your speakers to any audio devices with an optical output: audio player, DVD player, television... To do so:

- Plug one end of the optical cable into the back of the active speaker in the «OPTICAL» and the opposite end into your device.
- Select the Optical input using the «VOLUME/INPUT» button (on the back of the powered speaker) or the SOURCE button on the remote control. The purple light indicates that the source is connected to the «OPTICAL» input. Your system is ready to operate.

Connection via a coax cable*



The coax input enables you to connect your speakers to any audio devices with a coax output: CD player, DVD/Blu-ray player, television... To do so:

- Plug one end of the coax cable into the back of the active speaker in the «COAX» and the opposite end into your device.
- Select the COAX input using the «VOLUME/INPUT» button (on the back of the powered speaker) or the SOURCE button on the remote control. The white light indicates that the source is connected to the «COAX» input. Your system is ready to operate.

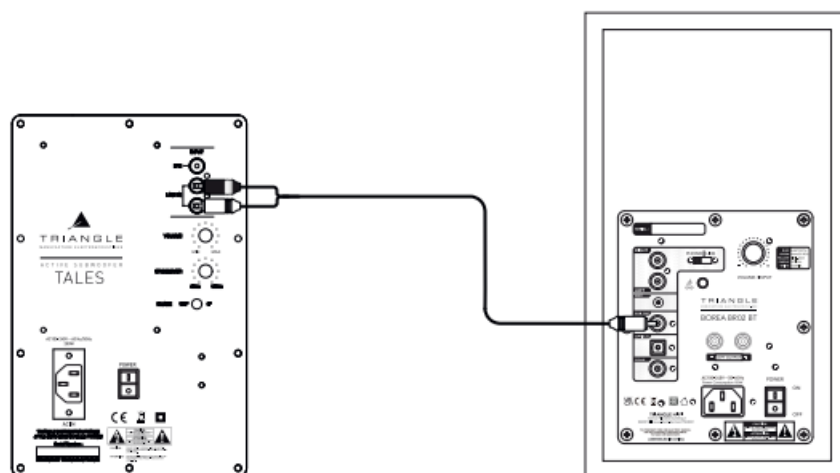
* Only compatible with stereo signals. If you do not have sound on these inputs, please set the audio output of your source to «PCM» or « Stereo ».

Connecting a subwoofer

The BOREA BT speakers include a subwoofer output allowing the connection of a subwoofer.



Use an RCA to 2 RCA cables (Y-cable) to connect the SUB output of the powered speaker and the 2 LINE IN inputs of your subwoofer. Adjust the volume of the subwoofer and its crossover frequency so that the sound is consistent between your speakers and the subwoofer. The subwoofer should blend in well with your speakers without being overpowering.



BASS AND TREBLE ADJUSTMENTS

Your BOREA BT speakers have an equalizer that enables you to adjust the low and high frequencies as you like.

Adjusting the amount of bass

With the «Bass +» and «Bass —» buttons on the remote control, you have access to 15 positions in 2dB steps over a range between 30 and 500Hz. The default setting is 0dB.

The low-frequency output will increase or decrease each time the remote control is pressed.

Adjusting the amount of treble

With the «Treble +» and «Treble —» buttons on the remote control, you have access to 15 positions in 2dB steps over a range between 1000 and 20kHz. The default setting is 0dB. The high-frequency output will increase or decrease each time the remote control is pressed.

When the speaker goes on standby, the settings will be stored for the next use. To restore the factory presets, you just need to press the «EQ RESET» button on the remote (See page 26).

AUTO STANDBY FEATURE

If no signal is received for 15 minutes, the speakers will automatically switch to standby. To exit the standby mode, simply switch the speakers back on with the remote



ENCEINTES BOREA BT /BOREA BT SPEAKERS

Technical specifications	BOREA BRO2 BT	BOREA BRO3 BT
Type	Enceintes actives bass-reflex Active speakers	Enceintes actives bass-reflex Active speakers
Driver diameters	5" / 1" Dome	6.5" / 1" Dome
Sensitivity	89 dB/m	90 dB/m
Bandwidth (+/- 3dB)	56 Hz – 22 kHz	47 Hz – 22 kHz
Amplifier Power output	2 x 50W	2 x 60W
Inputs	RCA, AUX, Optical, Phono, Bluetooth 5.0 aptX HD	RCA, AUX, Optical, Phono, Bluetooth 5.0 aptX HD
Sortie Output	Subwoofer	Subwoofer
Dimensions (WxHxD)	176 x 310 x 274 mm 6.92 x 12.2 x 10.8 inches	206 x 360 x 314 mm 8.1 x 14.1 x 12.36 inches
Active speaker net weight	6.1 kg 13.45 lbs	7.6 kg 16.76 lbs
Passive speaker net weight	5.1 kg 11.24 lbs	6.6 kg 14.55 lbs
packaging Gross weight (pair)	12.6 kg 27.78 lbs	15.8 kg 34.83 lbs

SAFETY INSTRUCTIONS

WARNING: Read carefully all the safety instructions before using the device.

- Keep these safety instructions for future reference.
- Do not use this apparatus near water or liquid.
- Only clean with a dry and soft cloth.
- Make sure the openings (vents) on the device are not blocked.
- Do not install near any heat sources such as radiators, stoves, or any other apparatus (including amplifiers) that produce heat.
- Only use accessories specified by the manufacturer.
- Be sure that the stand/table/furniture is strong enough to support the apparatus (stand, shelf, furniture...).
- Protect the power cord from being walked on or pinched, particularly at the plugs, and protect the connector where it exits from the apparatus.
- Unplug the apparatus during lightning storms or when it's unused for long periods of time.
- The plug of the apparatus must fit with the outlet. Never modify the plug in any way. The apparatus should be connected to a main socket outlet with a protective earthing connection.
- Refer to your authorized TRIANGLE dealer or qualified service personnel if the apparatus is damaged in any way. For example, if the power cord or the wall outlet is damaged, liquid has been spilled or objects have fallen on the apparatus, the apparatus has been exposed to rain or moisture, does not operate normally, or has been dropped.



GARANTIE / WARRANTY

Thanks for buying a TRIANGLE product.

We want you to enjoy your purchase to the fullest. The first step is an easy registration of your product. By doing this, you will benefit from helpful tips, products support, special offers, and a 1 year extended warranty.

1- Online registration

Register your product easily online at the following address: <http://register.trianglehifi.com/>

2- Warranty card

You can also register your product and validate your warranty by filling out the warranty card and sending it to:

TRIANGLE Hi-Fi

475 Avenue Flandres Dunkerque 02200 Villeneuve-Saint-Germain FRANCE

Note on the warranty

Your TRIANGLE loudspeakers are warranted for 2 years. This warranty takes effect from the date of purchase and covers any manufacturing defect or damage your loudspeakers could suffer as a result of these same defects. This warranty is granted solely to the first owner of the product and is not transmittable in the case of resale. **To validate your warranty, you will need to register online or mail the warranty coupon to TRIANGLE.** Please note, that this warranty is voided if any fault arises from ill-treatment or careless handling of the product.

The following are excluded from this warranty:

- A burned voice coil caused by overloading the loudspeaker
- Any fault occurring from professional usage (public sound systems, PA systems, etc.)
- Any fault resulting from storage in areas of high humidity
- A pierced or torn membrane
- A torn suspension
- Any fault resulting from a mechanical shock (e.g. if dropped or handled roughly)
- Any fault arising from servicing by anyone other than an authorized TRIANGLE service technician
- Damaged cabinets due to mishandling

www.trianglehifi.fr

SITE INTERNET / WEBSITE



facebook.com/trianglehifi



instagram.com/trianglehifi



twitter.com/trianglehifi



Documents / Resources



[TRIANGLE HIFI BOREA BT Wireless Bluetooth Bookshelf Speaker](#) [pdf] Owner's Manual BOREA BT, Wireless Bluetooth Bookshelf Speaker, Bookshelf Speaker, Bluetooth Speaker, Wireless Speaker, Speaker

References

- [Triangle Hifi \(@trianglehifi\)](#) • Instagram photos and videos
- [Enregistrement Produit - Extension de Garantie - TRIANGLE HIFI – Manufacture TRIANGLE Hi-Fi](#)
- [Manufacture d'Enceintes Acoustiques Haut de Gamme - TRIANGLE HIFI – Manufacture TRIANGLE Hi-Fi](#)
- [UK declaration of conformity - TRIANGLE Hifi](#)
- [Déclaration de conformité UK – Manufacture TRIANGLE Hi-Fi](#)