

## Contents [hide](#)

[1 Trex Enhance Decking Plug System](#)

[2 Product Usage Instructions](#)

[3 Installation Instructions](#)

[4 FAQs](#)

[5 Documents / Resources](#)

[5.1 References](#)



## Trex Enhance Decking Plug System



## Specifications:

- Product Name: Trex Counterbore Tool
- Color: Teal
- Compatibility: Trex decking materials
- Required Power: 18v or greater drill or impact driver

## **Product Usage Instructions**

### **Installation Steps:**

#### **Preparing for Installation:**

Ensure you have the following parts and tools ready: cordless drill, Trex Counterbore tool, decking screws, depth setter.

#### **Drilling Counterbore Holes:**

Using the Trex Counterbore tool, bore counterbore holes to the proper depth by drilling until the cup stops spinning. This tool can also be used for Trex Fascia Plug installations.

#### **Installing Screws:**

With the depth setter in a suitable drill or impact driver, install screws perpendicular to the board. Drive the screws into the decking until the bit releases from the screw. Ensure continuous driving without stopping.

#### **Plugging Holes:**

Remove any debris and use a Trex Enhance decking color-matched plug. Align the grain and press the plug into the hole, then tap it flush with a smooth-faced hammer.

## **Installation Instructions**

### **IMPORTANT NOTES:**

- For use with Trex Enhance Decking.
- Note: This counterbore tool can also be used for Trex Fascia Plug applications.
- Not recommended for use in salt environments.
- Trex Hideaway® plug systems are only compatible with Trex Plugs.

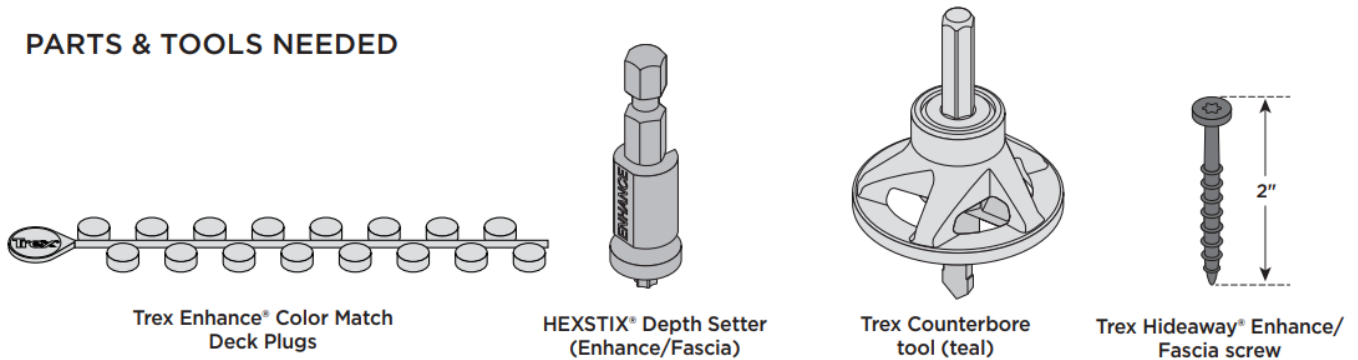
- Not for use with sleeper systems that are less than 2" thick.
- Always follow deck board manufacturer's installation guidelines.

## General Installation Recommendations:

- Always use two screws per joist or stair stringer.
- At board ends on the deck's edge, install screws placed perpendicularly at the recommended distance, at minimum of 1" from the board end and edge, without splitting the board.

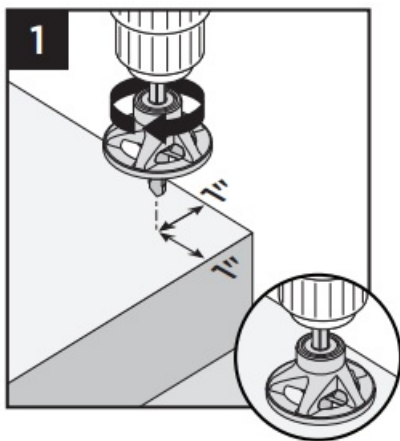
## PARTS & TOOLS NEEDED

### PARTS & TOOLS NEEDED



- Using an 18V or higher cordless drill and the Trex Counterbore tool (sold separately), bore counterbore holes to the proper depth by drilling until the cup stops spinning.

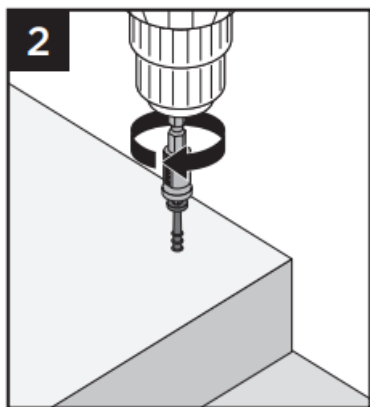
**NOTE:** This teal counterbore tool can also be used with Trex Fascia Plug installations.



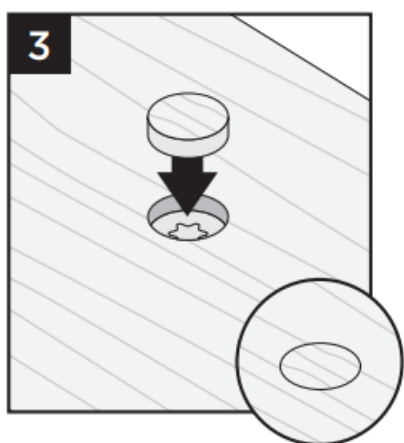
Using the HEXSTIX® depth setter in a 18v or greater drill or impact driver, install fasteners at a 90° angle (perpendicular to the board). Drive the screws into the decking

until the bit releases from the screw.

**NOTE:** Drive the screw in all at once, do not stop. You will hear a change in sound when the screw is fully driven.



Clean out hole of any remaining debris and using a Trex Enhance decking color matched plug (sold separately), align the grain and press plug into the hole, and tap flush with a smooth faced hammer.



## Have Questions?

1-800-BUY-TREX

**NOTE:** Construction methods are always improving. Please ensure you have the most up-to-date installation instructions by visiting: [trex.com](https://www.trex.com)

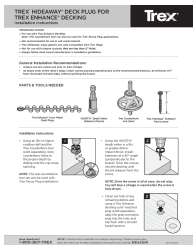
## FAQs

**Q: Where can I find more installation instructions and support?**

A: For additional installation instructions and support, visit the official Trex website at [trex.com](https://www.trex.com)

**Note:** Always refer to the complete user manual for comprehensive instructions and safety guidelines.

## Documents / Resources



[Trex Enhance Decking Plug System \[pdf\] Installation Guide](#)

Trex Counterbore tool teal, ENT-HPLR-0052240, Enhance Decking Plug System, Decking Plug System, Plug System

## References

- [Trex Composite Decking | Composite Deck Materials | Trex](#)
- [User Manual](#)

■ [Trex Decking Plug System](#), [Enhance Decking Plug System](#), [ENT-HPLR-0052240](#), [Plug System](#), [Trex](#), [Trex Counterbore tool teal](#)

[Previous Post](#)

[Trex X Series Cable Railing User Guide](#)

## Leave a comment

Your email address will not be published. Required fields are marked \*

Comment \*

Name

Email

Website

☐ Save my name, email, and website in this browser for the next time I comment.

Post Comment

[Manuals+](#), [Privacy Policy](#) | [@manuals.plus](#) | [YouTube](#)

This website is an independent publication and is neither affiliated with nor endorsed by any of the trademark owners. The "Bluetooth®" word mark and logos are registered trademarks owned by Bluetooth SIG, Inc. The "Wi-Fi®" word mark and logos are registered trademarks owned by the Wi-Fi Alliance. Any use of these marks on this website does not imply any affiliation with or endorsement.