



TREND IQ5 BMS Controller Platform Instruction Manual

[Home](#) » [trend](#) » TREND IQ5 BMS Controller Platform Instruction Manual 

Contents

- 1 TREND IQ5 BMS Controller Platform
- 2 Product Information
- 3 Product Usage Instructions
- 4 BEFORE STARTING CONFIGURATION
- 5 CONFIGURATION
- 6 Installation Instructions – Configuring
- 7 Documents / Resources
 - 7.1 References
- 8 Related Posts



TREND IQ5 BMS Controller Platform



Product Information

Specifications

- **Product Name:** IQ5, IQ5-IO
- **Model Number:** Not specified

- **Installation Instructions:** Configuring
- **Manuals Included:** IQSET Manual, IPTool Manual, IQToolMonitor Applet Manual, IQToolAddresser Applet Manual, IQ5 Configuration Manual
- **Supported Networks:** Ethernet, RS-485, T1LIObus, IQ3/4 IObus, USB
- **Terminator Switches:** RS-485 networks

Product Usage Instructions

Before Starting Configuration

- **Prepare the Ethernet Network(s)**

If the IP address settings (IP address, subnet mask, default router, WINS and DNS servers' addresses) are to be supplied by a DHCP server, ensure one is installed on the Ethernet segment to which IQ5 is connected.

Additional Documentation Required

- IQSET Manual
- IPTool Manual
- IQToolMonitor Applet Manual
- IQToolAddresser Applet Manual
- IQ5 Configuration Manual

Note: PDF copies of the manuals are included with IQSET installation in the following folder: C:\...Trend Control Systems Documentation

Install DNS Server

- If email alarms are to be sent and the email server address is identified by internet domain name, a DNS server must be installed. Note that IQ5 does not support WINS. If hostnames are to be used, then a DNS server is recommended. For security, the use of LLMNR protocol is not advised.

Configuration

- **Isolate All Power (including any I/O supplies)**

Make sure to isolate all power supplies before touching any connected leads.

- **Open Panel / Enclosure**

Be cautious as opening the panel may expose dangerous voltages.

- **Peel Off Serial Label(s) and Retain**

Remove the serial label(s) from the front panel and retain them. Leave the front panel protective film in place.

- **Disconnect All I/O from I/O Modules**

Disconnect all I/O connections from the I/O modules, but leave IQ5 Power, Ethernet, RS-485, T1LIObus, IQ3/4 IObus, and USB connected where appropriate. Make sure to isolate all power supplies before touching any connected leads.

- **Set RS-485 Terminator Switches (if RS-485 networks are connected)**

If RS-485 networks are connected, set the RS-485 terminator switches accordingly.

- **Configure XCITE/IO Modules (where fitted)**

If XCITE/IO modules are fitted, follow the installation instructions for configuring them.

- **Connect Engineering PC/Laptop (with IQSET installed)**

Connect your engineering PC or laptop to the IQ5 using either an Ethernet hub/switch.

FAQ

1. **Q: Where can I find the additional documentation required for configuration?**

A: The additional documentation, including the IQSET Manual, IPTool Manual, IQToolMonitor Applet Manual, IQToolAddresser Applet Manual, and IQ5 Configuration Manual, can be found in the following folder: C:\...Trend Control Systems Documentation.

2. **Q: What networks are supported by IQ5 and IQ5-IO?**

A: IQ5 and IQ5-IO support Ethernet, RS-485, T1LIObus, IQ3/4 IObus, and USB networks.

3. **Q: Do I need a DHCP server for IP address settings?**

A: If the IP address settings (IP address, subnet mask, default router, WINS and DNS servers' addresses) are to be supplied by a DHCP server, then it is recommended to install one on the Ethernet segment to which IQ5 is connected.

Important: Retain these instructions

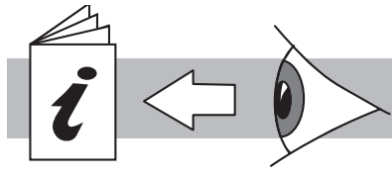
These instructions shall be used by trained service personnel only. If the equipment is used in a manner not specified by these instructions, the protection provided by the equipment may be impaired.

<https://partners.trendcontrols.com>



BEFORE STARTING CONFIGURATION

- **Install the IQ5 and any required I/O Modules**



- IQ5 Installation Instructions – Mounting (TG201482)
- IQ5-IO Installation Instructions – Mounting (TG201484)
- IQ4/IO/.. Installation Instructions – Mounting (TG201342)
- XCITE/IO/.. Installation Instructions – Mounting (TG200627)

Prepare the Ethernet Network(s)

- **Install DHCP Server**

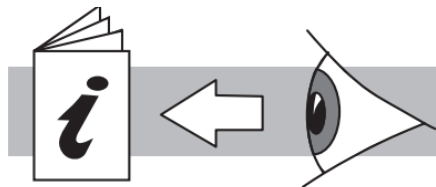
If the IP address settings (IP address, subnet mask, default router, WINS and DNS servers' addresses) are to be supplied by a DHCP server, ensure one is installed on the Ethernet segment to which IQ5 is connected.

- **Install DNS Server**

If email alarms are to be sent, and the email server address is identified by internet domain name, a DNS server must be installed.

Note: IQ5 does not support WINS. If hostnames are to be used, then a DNS server is recommended. For security the use of LLMNR protocol is not advised.

Install IQ@SET on Engineering PC / Laptop



IQSET Manual (TE200147)

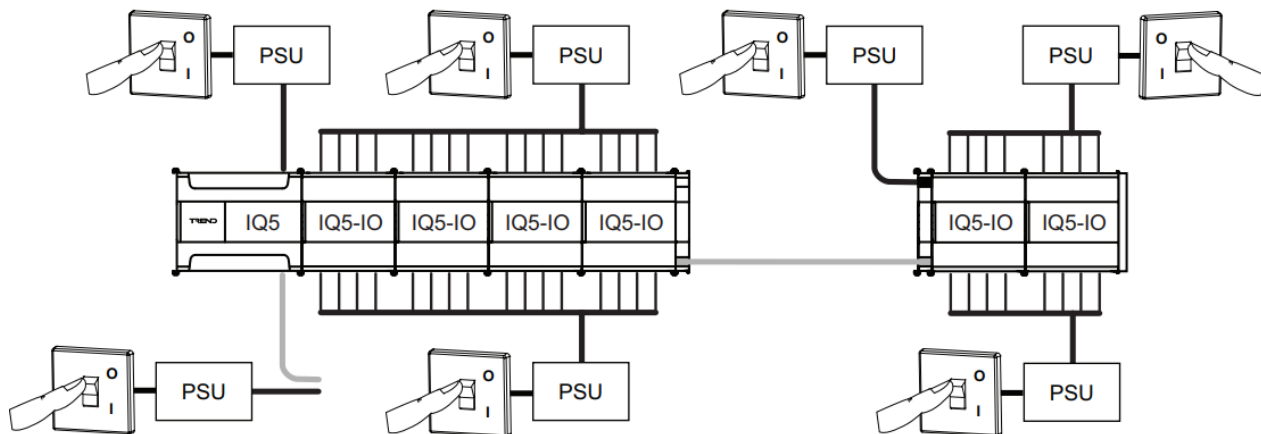
Additional Documentation Required

- IQSET Manual (TE200147)
- IP Tool Manual (TE200638)
- IQTool Monitor Applet Manual (TE201298)
- IQTool Addresser Applet Manual (TE201299)
- IQ5 Configuration Manual (TE201486)

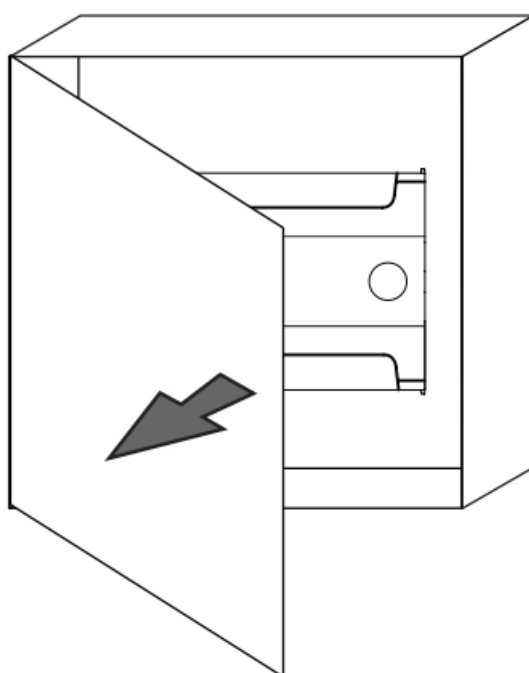
Note: PDF copies are included with IQSET installation in the following folder: C:\...\Trend Control Systems\Documentation

CONFIGURATION

- Isolate All Power (including any I/O supplies)
- **WARNING** Connecting leads may be connected to power supplies. Isolate before touching.

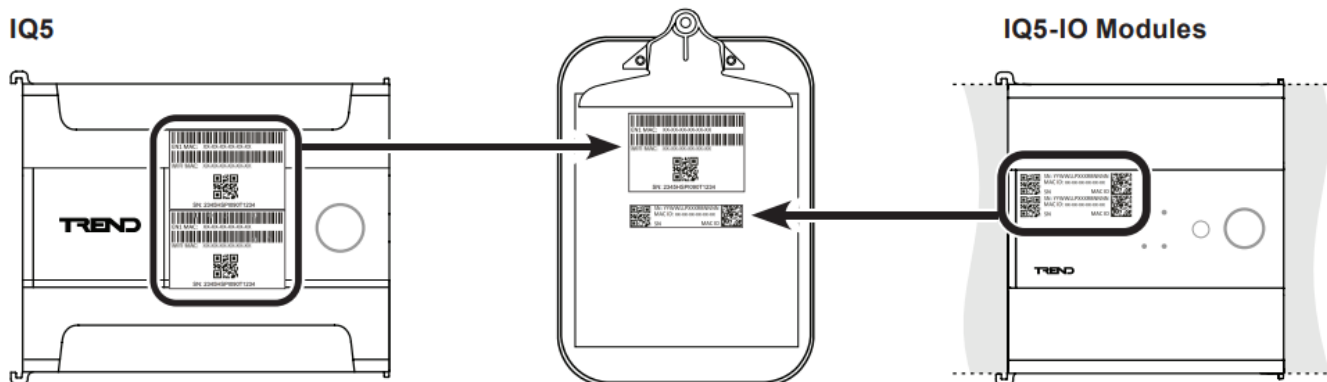


Open Panel / Enclosure



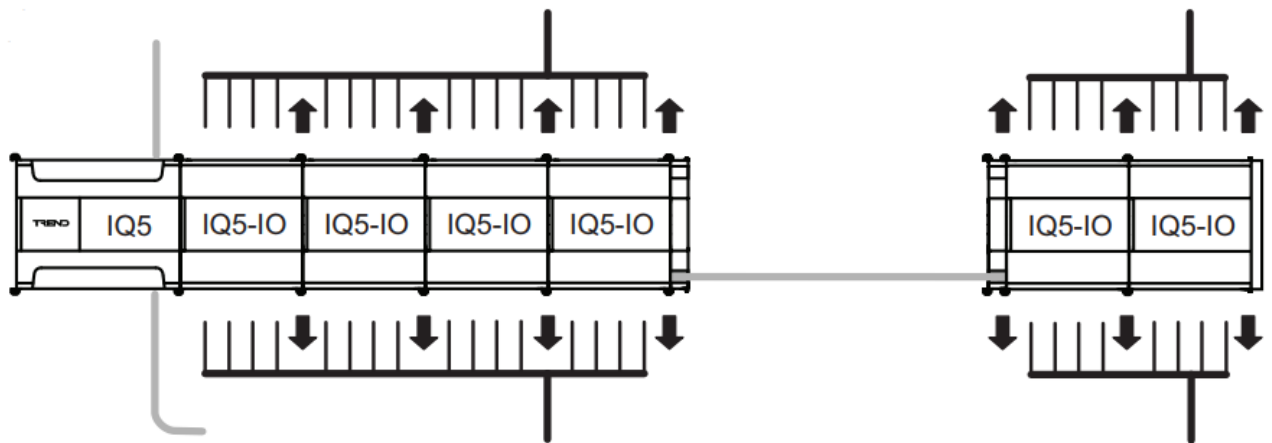
WARNING Opening the panel may expose dangerous voltages.

Peel Off Serial Label(s) and Retain (leave front panel protective film in place)

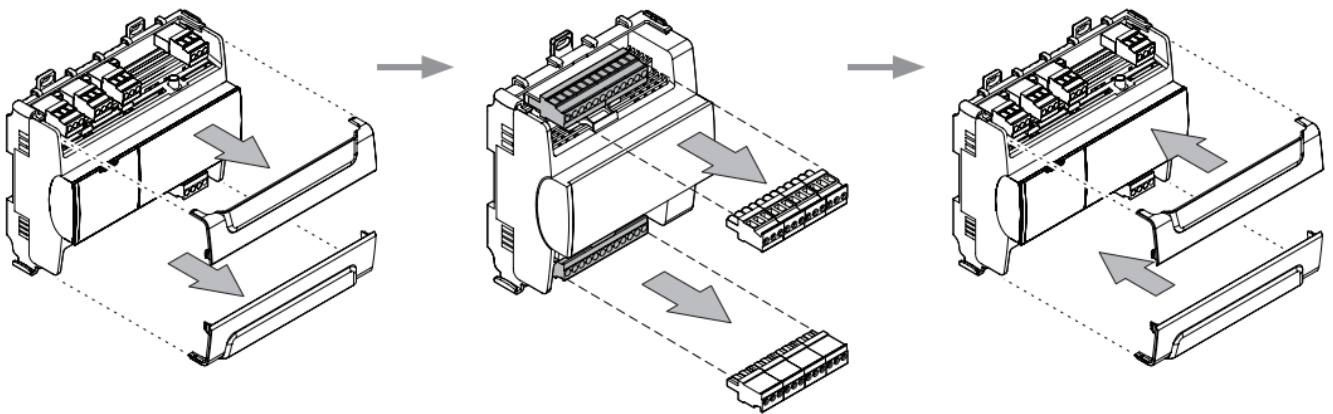


Disconnect All I/O from I/O Modules

- **WARNING** Connecting leads may be connected to power supplies. Isolate before touching.
- Leave IQ5 Power, Ethernet, RS-485, T1L IO bus, IQ3/4 IO bus and USB connected (where appropriate).

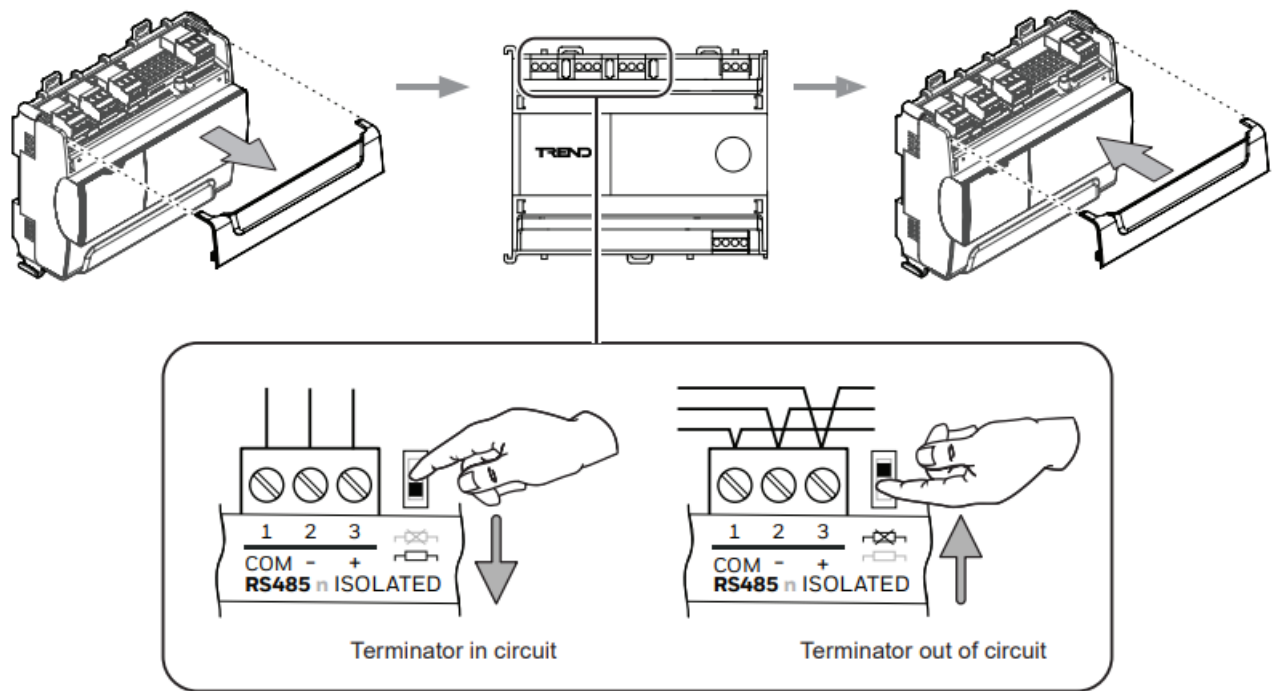


- Remove terminal covers
- Unplug connectors
- Refit terminal covers



Installation Instructions – Configuring

Set RS-485 Terminator Switches (if RS-485 networks are connected)

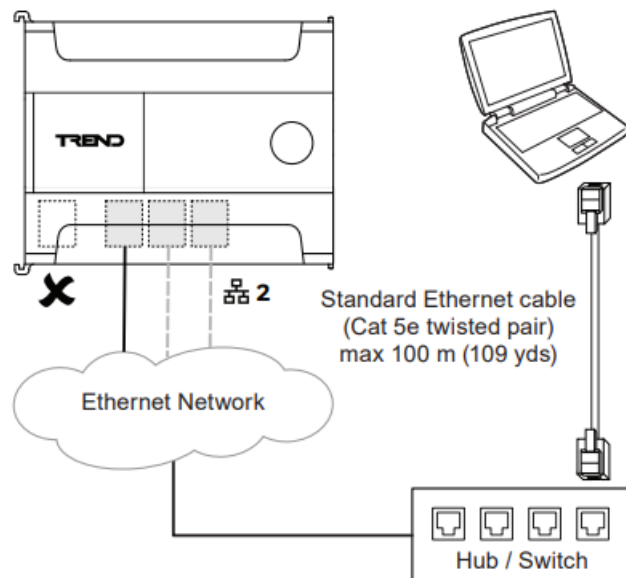


Configure XCITE/IO Modules (where fitted)

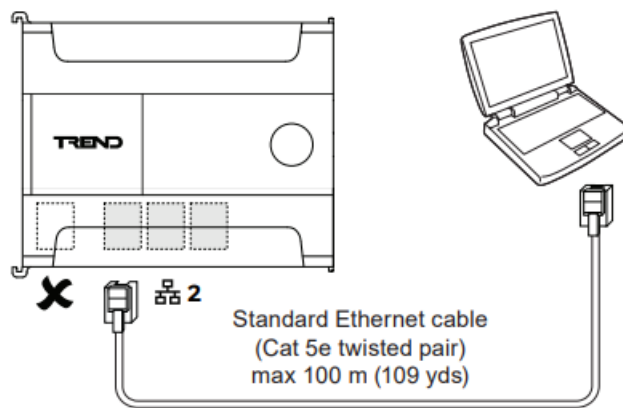
- XCITE/IO/.. Installation Instructions – Configuring (TG200627) Section 2 Only

Connect Engineering PC / Laptop (with IQSET installed)

- **Either:** via Ethernet Hub/Switch

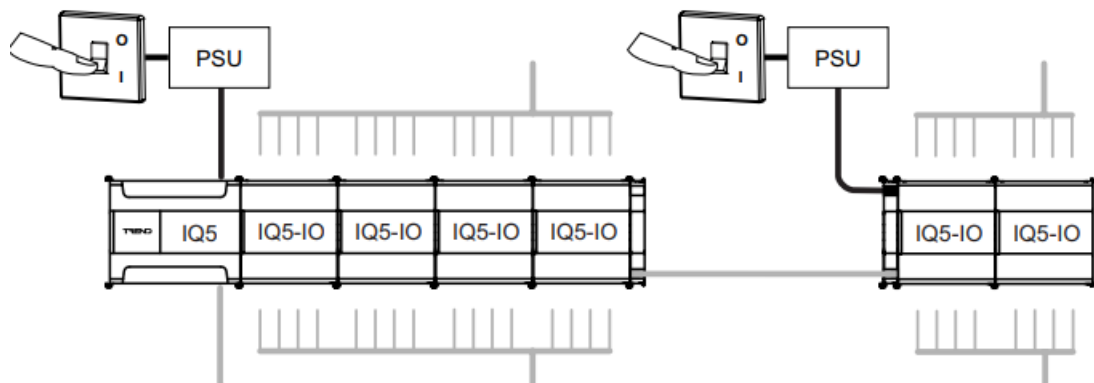


- **Or:** using direct connection

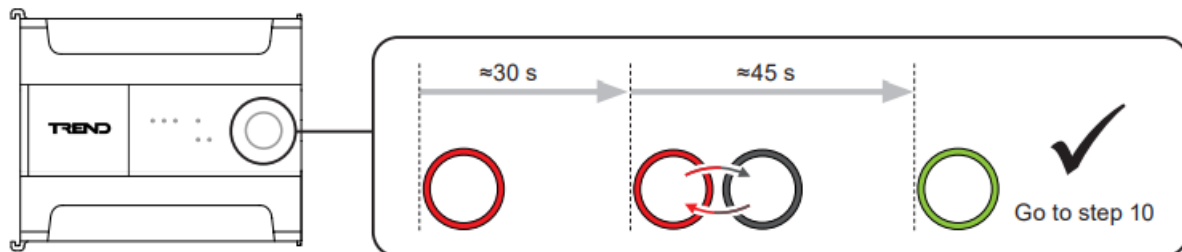


- **Note:** A connection via the USB Local Engineering Port cannot be used at this point.

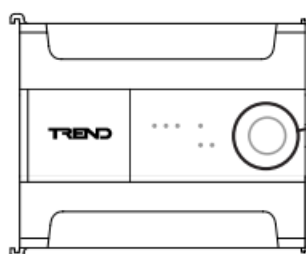
Switch On Power to IQ5 (including any additional T1L IO and IQ3/4 Bus PSUs)



Wait for Controller to Boot Up

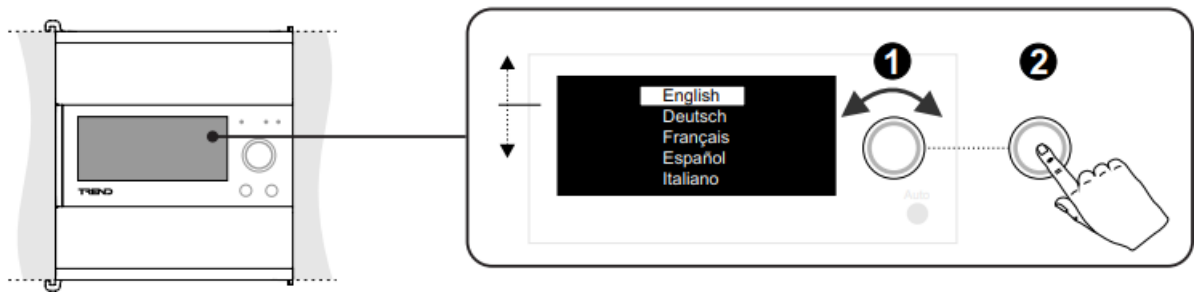


Check IQ5 Status Indicator



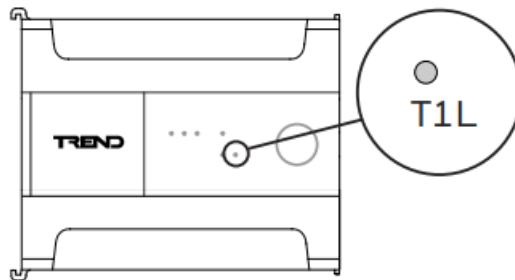
Expected indications	
	Controller is running OK. Proceed to step 11.
	One or more modules on the T1L bus or IQ3/4 IO bus is not yet addressed correctly. This can be ignored at this stage - proceed to step 11.
Fault indications	
	Displayed for longer than 60 seconds. The controller boot up process has encountered a problem. Try resetting the IQ5 to default settings (see page 19).
	No power - check input power supply



Set Display Language on IQ5-IO HOA Modules (if required)




Note: To change the language after initial setup, reset the module by following the procedure in section 7 on page 20.

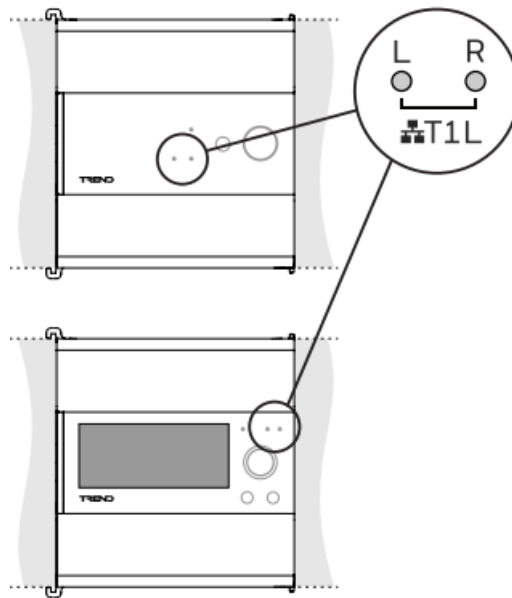
Check Status of T1L IO Bus (only if IQ5-IO modules are connected)



Normal operation indication	
	Bus is connected and working correctly.
	Bus is not connected (no T1L modules).

Fault indication	
	Bus is connected but not working correctly. Check the bus wiring and that all IO modules are powered ON.

IQ5-IO Modules



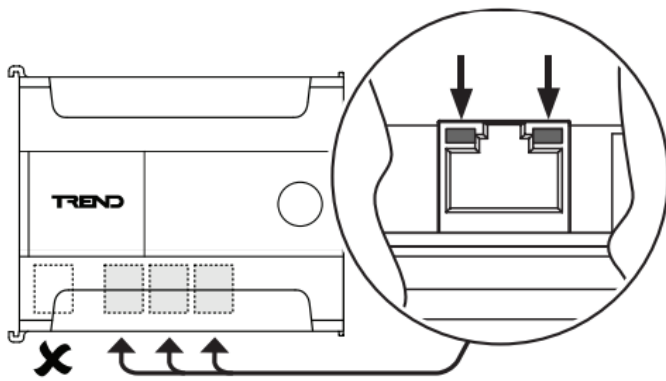
Normal operation indication

<div>L</div> <div>●</div>	<div>R</div> <div>●</div>	Bus is active on both sides of the module	
<div>L</div> <div>●</div>	<div>R</div> <div>●</div>	<ul style="list-style-type: none"> • Bus is active on • left side only 	<ul style="list-style-type: none"> • Valid for the last module on the bus. • For all others, check wiring on the side that is unlit.
<div>L</div> <div>●</div>	<div>R</div> <div>●</div>	<ul style="list-style-type: none"> • Bus is active on • right side only 	

Fault indication

<div>L</div> <div>●</div>	<div>R</div> <div>●</div>	No valid T1L connection. Check the bus wiring.
---------------------------	---------------------------	--

Check Ethernet Indicators (for any connected ports)

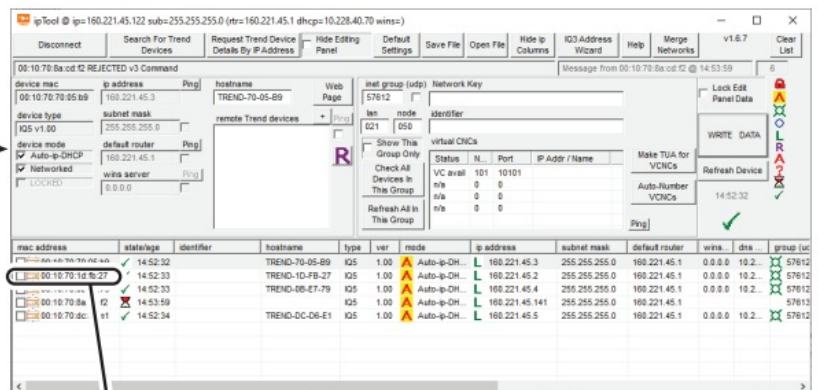
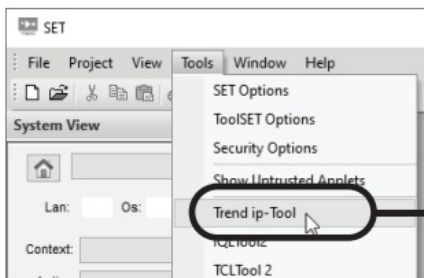


Normal operation indication	
	1000 Mbps link detected
	100 Mbps link detected
	10 Mbps link detected

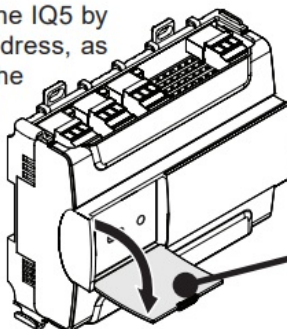
Note: The indicator will flash when data is being transmitted or received.

Connect to IQ5 using IP Tool

- Using the PC/laptop (see step 7) run IQSET / IP Tool



Then find the IQ5 by its MAC address, as shown on the serial label



Set up IP Addressing Details

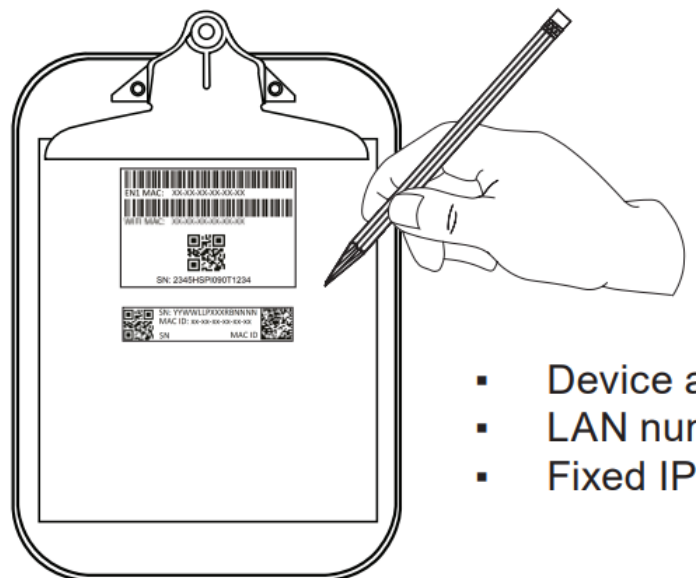
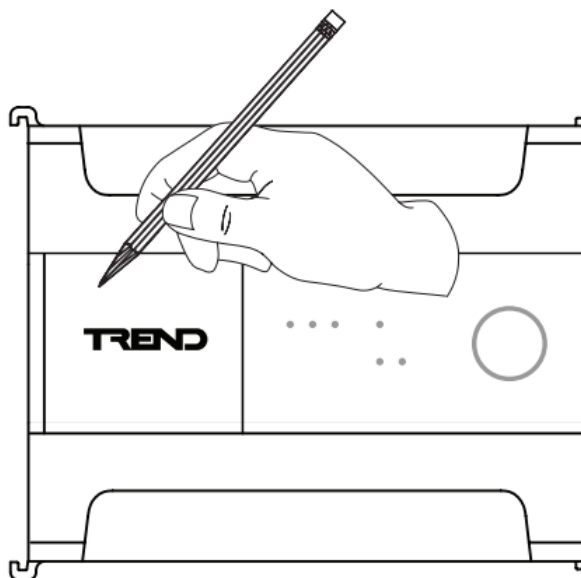
- With the IQ5 selected in the IPTool devices list, check the following parameters and set as required.
IMPORTANT: The Network Key, lan and node parameters **MUST** be set.

Parameter	Setting / Value	Further Details
Network Mode - Networked*	<input checked="" type="checkbox"/> = build Trend network with other devices (default) <input type="checkbox"/> = operate in standalone mode	In standalone mode the IQ5 will not build a LAN or internetwork with other devices.
Network Mode - Auto-ip-DHCP*	<input checked="" type="checkbox"/> = dynamic IP DHCP (default) <input type="checkbox"/> = static IP addressing	<p>If set to DHCP mode but no DHCP server is found, the IQ5 will operate in link/local mode where it auto negotiates its IP address with other devices on its Ethernet segment.</p> <p><i>Note: It is recommended that link/local only be used on a single segment system.</i></p>
IP Address*, Subnet Mask*, Default Router*	<p>If static IP addressing is selected enter the required values in the format:</p> <p>xxx.xxx.xxx.xxx</p>	WINS is not supported by IQ5. If hostnames are to be used, then a DNS server is recommended. The use of LLMNR protocol is not advised.
Hostname	Default is 'Trend-' plus the last three octets from the MAC address. Change if required.	The hostname may comprise upper or lowercase characters A to Z, digits 0 to 9, underscore or hyphen, with no spaces.
UDP	Default is 57612. If required, this can be changed to a value from 49152 to 65535.	<p>All IQ5 controllers that are required to be part of the same Trend network must have the same udp port number and the same network key. Multiple Trend networks can exist on the same physical network, in which case each separate Trend network will require a different network key.</p> <p>HINT: For consistency, type the network key into a text editor (e.g. Notepad), then copy and paste it for each device.</p>
Network Key	<p>Enter a suitable key comprising at least 10 alphanumeric characters (no spaces).</p> <p>Do not forget the Network Key!</p>	
virtual CNCs*	<p>Click Auto Number vCNCs or double-click on a vCNC in the virtual CNCs list and enter the following:</p> <p>node - the vCNC address 1, 4 to 9, 11 to 119 (0 = vCNC disabled) port - the vCNC port number 1 to 32767</p> <p><i>Note: If Use Default Port is checked the port number will be set to 10000 plus the node address (e.g. node 23 = port 10023).</i></p>	<p>The IQ5 has four vCNCs (or eight when licenced as an NC device). All vCNCs are all disabled by default. At least one vCNC must be enabled to allow a supervisor, tool or local display to make a connection to the Trend system.</p> <p>For most systems it is recommended to have vCNCs on at least two separate devices on each LAN in order to provide continuity of communications (if one device is offline) and to provide load sharing during intensive data transfer operations (e.g. when downloading plot data).</p>
LAN*	<p>Enter the required local LAN number: 1, 4 to 9, 11 to 119</p> <p><i>Note: This must be the same for all devices required to form a LAN.</i></p>	IQ5 controllers are given a default device address of 119 and LAN number of 20 in the factory.
OS*	<p>Enter the required device address: 1, 4 to 9, 11 to 119</p> <p><i>Note: This must be unique on a LAN.</i></p>	
Identifier	Enter a name that identifies the controller within the system.	To avoid potential confusion, it is generally recommended that this is made the same as the hostname.

- Click the WRITE DATA button to save the new settings.
- **Note:** If parameters indicated * above are changed the IQ5 will reboot when the new values are saved.
- **STOP!**

It is recommended that you complete the above setup for all IQ5 controllers in the Trend network before proceeding.

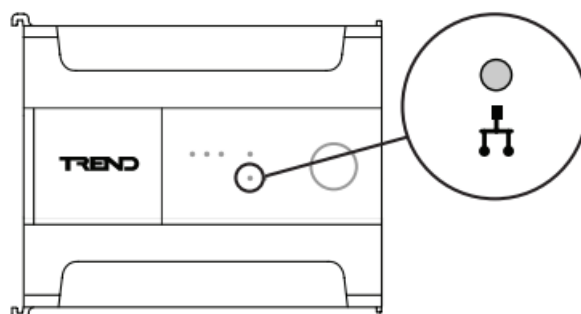
Record the Address Details of the Controller







- Device address
- LAN number
- Fixed IP

- Device address (O/S)
- LAN number
- Fixed IP Address or Hostname (if DHCP)

Check LAN OK Indicator (not applicable if being used in NC Mode)



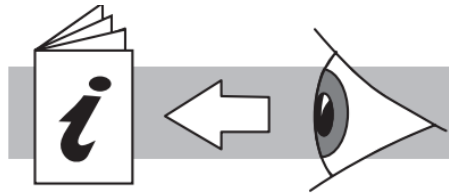
Normal operation indication	
	LAN built OK with at least one other device.
	Attempting to build a LAN with other devices that have the same LAN number and Network Key. This may take several minutes.
	Controller set to standalone mode and will not build a LAN with other devices.

Fault indication	
	If this continues to show for more than a few minutes this indicates that the controller has not found any other devices on the same LAN. Use IPTool to check device settings.

Connect to the Trend Network using I QSET

- Using the Engineering PC/Laptop (see step 7) run IQSET and make a connection to the Trend Network (or

Site). For example:

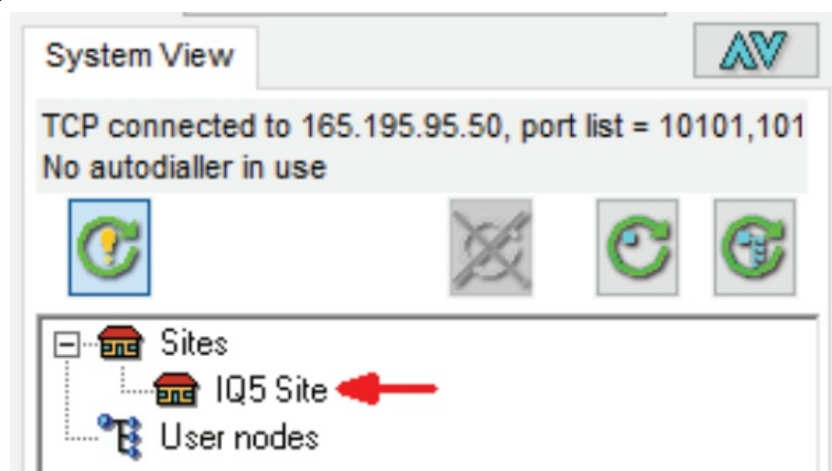


- IQSET Manual (TE200147)
- Open a new site (e.g. File > Open/New Project > Live Site).
- In the IQSET System View panel right-click on Sites and select New Site.
- Select Trend as the network type and click OK.
- Enter a Site name and click Edit site details. The Connection Wizard will appear.
- Select Launching TUA Editor and click Next. The TUA editor will appear. Select the CNC tab:

- Select TCP/IP, enter the IP Address (or hostname) of an IQ5 and add at least one valid vCNC port in the Remote IP port list.

Note: If using a hostname and DNS or LLMNR is not supported on the network, add '.local' to the hostname and ensure that IQSET is connected to the same segment.

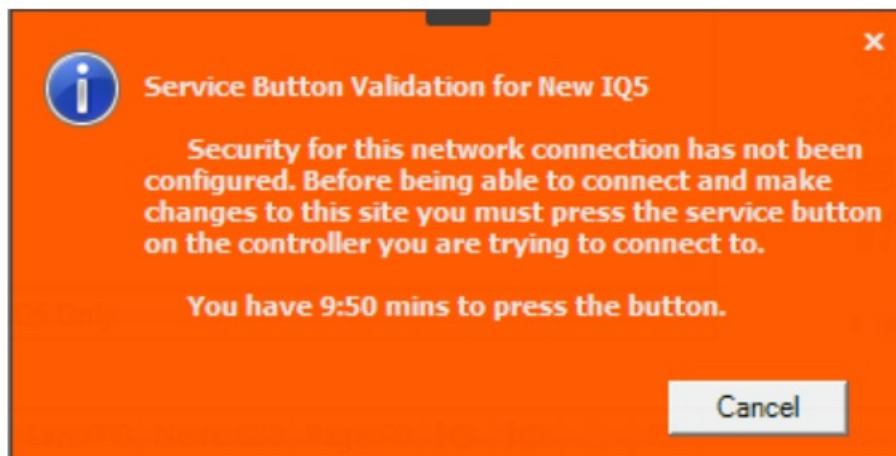
- Click OK twice.
- In the System View panel, double-click the site name in the Sites tree:




- If the IQ5 (to which you are connecting) already has a System Account set up, then you will now be asked to login using the appropriate credentials – go to step 20 on page 9.
- Otherwise, you will be prompted to press the controller's service button to validate the connection – go to step 19.


Validate the Connection to IQ5 and Create System Accounts

- If you attempt connection to an IQ5 that has no system accounts setup, then IQSET will display:

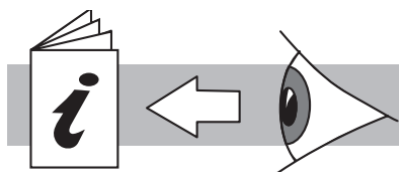


- Press the service button  on the controller within the specified time limit:
 - IQSET will now display a dialogue box for you to enter an Account Name, Password and Email address for the Admin system account.

Note: The email address is required in order to recover from a forgotten password.

- Click  to create the account.
- You will then be given the option to create a single Engineer system account – click Yes or No as required.
- The new system account(s) will now be set up on the controller and synchronized with all other IQ5 controllers on the same Trend network, i.e. any IQ5 controller that has:
- the same Network Key and UDP Port set up, and no pre-existing system accounts.
- This will take a few seconds to complete, after which time IQSET will display a login box – go to step 20 on page 9.

Note: To add further system accounts go to the System View in IQSET, right-click the site, select System Account Manager and follow the instructions in the IQSET Manual.



IQSET Manual (TE200147)

- Remember to provide the credentials of the Admin system account plus the Network Key to the site owner to enable them to manage the system accounts. If the site owner does not have access to IQSET you may need to add another Admin system account for each system integrator working on the site.

Login to the Trend Network

- If you attempt connection to an IQ5 that has system accounts setup, then IQSET will display:

Enter credentials for site: Techpubs Rig (IQ5)
Enter user credentials in order to gain access to this site.

User Name

Password

[I've forgotten my password](#) [Site Recovery](#)

- Enter the User Name and Password for a valid Admin or Engineer system account.
- Click OK.
- In the System View panel click the site name to refresh the site details (or right-click and select Refresh).

Create Strategy in IQSET

Create an IQSET project and create a strategy for each IQ5 controller.

- In IQSET click File > Open / New Project.
- Select Create New SET Project and click OK.
- Enter the required details and click OK.
- In the Project View panel add the required LANs by right-clicking the project name and selecting Insert Lan.
- Enter the required LAN Number and Label, and click OK. Note: The LAN number should match the LAN(s) defined using IPTool in step 15.
- Add the required IQ5 controllers by right-clicking a LAN and selecting Insert Device > IQ Controller. The Controller Selection dialogue appears:

Controller Selection

Range

☐ IQ1

☐ IQ2

☐ IQ3

☐ IQeco

☐ IQ4

☒ IQ5

☐ Other

Notes

Select 'Cancel' to proceed straight to 'Solution' selection.

Controller

Device Type:

Firmware Version:

I/O Total:

Options

☐ IQ Interfacing ☐ Node Controller

☒ BACnet ☐ TrendLAN

☐ IQ3-IQ4 IO ☒ B-BC Sched.

☐ IQView SCD

IQ Interfacing

- Select IQ5 and select the required number of I/O points (I/O Total) and licensable features (Options) and click OK.
- In the Device Details dialogue enter the controller Address and Name, and click OK.
Note: The Address should match the node(s) defined using IPTool in step 15.
- In the Address Module dialogue enter any required settings and click OK.
- In the Sensor Type dialogue enter any required settings and click Exit.

Set up IO Modules (if installed)

- Right-click in the empty strategy page and select Device > I/O Setup.
- In the I/O Setup dialogue add and configure any IO Modules as required by following the instructions in the IQSET Manual.

Configure Remaining Strategy (as required)

- Create the remainder of the strategy by following the instructions in the IQSET Manual and IQ5 Configuration Manual.

Local User Modules

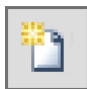
- It is not necessary to create local User Modules for the IQ5, unless these are required to control end users access to the web interface or the IQVIEW SCD (single controller display).
- All engineering access is controlled by the system accounts created in step 19.

Set up IQ5 Feature Licencing

If any licensable features are required (e.g. additional IO points, NC or INT functionality) these must now be enabled.

- With IQSET connected (see step 18) and logged in (see step 20), go to System View.
- Right-click the site name in the Sites tree and select IQ5 Feature Licensor.





- Select the device(s) required and click  to generate a Licence Request File and save it on the PC.
- Login to the HBT Licensing Portal:
 - <https://MyBuildings.honeywell.com>
- Select Quick Cart and upload the License Request File.
- Add any additional details including the email address of the person requiring the licence, then checkout the order.

After the order has been processed an email will be sent to the specified email address. You will then need to...

- Download the Licence File from the Portal and save it.



- Using the IQ5 Feature Licensor click  to import the Licence File.
- Select which device(s) to update.

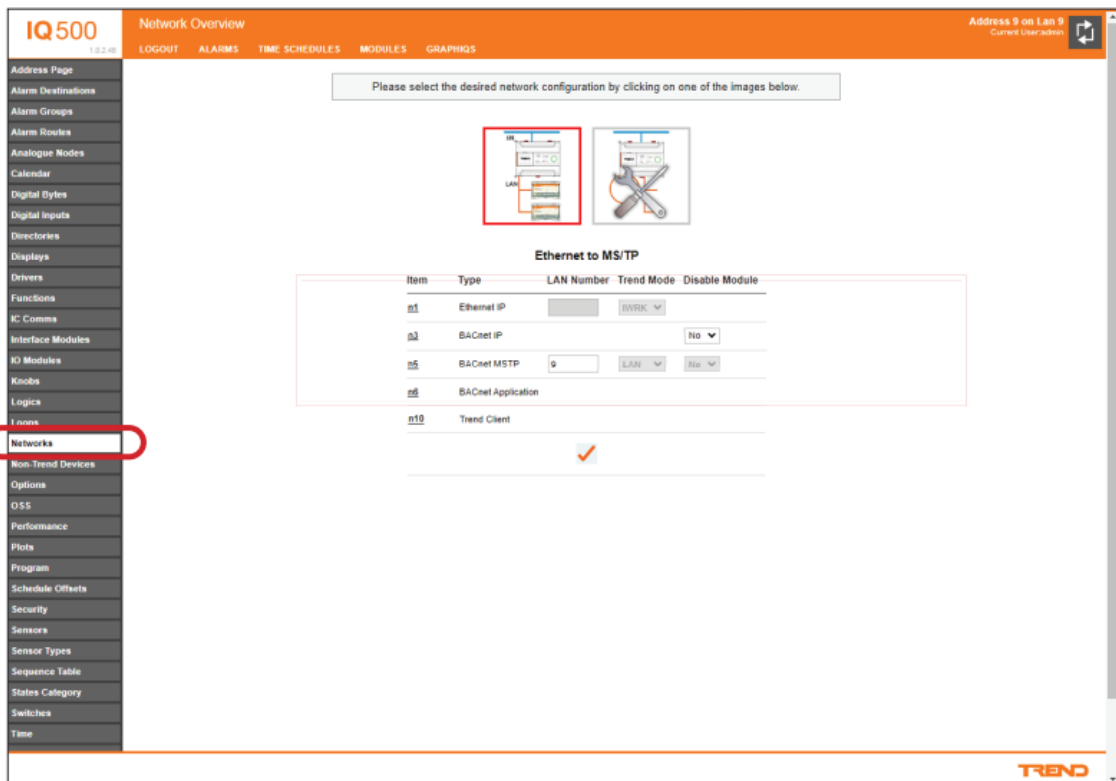
- Click  to update the device licenses.

Note: If you are not connected to the same IQ5 vCNC that was used when creating the Licence Request File a warning will be displayed. If you are connected to the same site you can ignore the warning. If you are not connected to the same site connect using a different connection.

Set up NC Communication Mode (if the IQ5 is required to operate as node controller)

Note: The IQ5 must be licensed for NC mode.

- Using the Engineering PC/Laptop (see step 7) open a compatible web browser and access the IQ5 web interface using its IP Address or Hostname.
- If prompted, login using valid system account credentials.
- Select Modules > Networks to display the NC Configuration Wizard.



IQ500 1.0.2.48 Network Overview Address 9 on Lan 9

LOGOUT ALARMS TIME SCHEDULES MODULES GRAPHICS

Please select the desired network configuration by clicking on one of the images below.

Ethernet to MS/TP

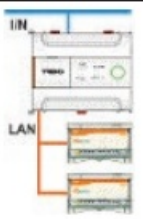

Item	Type	LAN Number	Trend Mode	Disable Module
n1	Ethernet IP		BWIK	
n2	BACnet IP		No	
n3	BACnet MSTP	9	LAN	No
n4	BACnet Application			
n10	Trend Client			

TREND

- Click required mode icon (see table), and if necessary specify any parameters, e.g. LAN number.

Note: If no icons appear, check that the IQ5 is configured and licensed for NC operation (see step 21 & 22).

- Click  ; the controller will now reboot.
- Set the communications channel on the MS/TP network module to the port the MS/TP network is connected to.

Mode Icon	Parameter Settings	
	Ethernet Internetwork to to MS/TP LAN (default)	
	Parameter	Setting
	BACNet MSTP LAN number	1, 4 to 9, 11 to 119
	BACnet IP Disable Module	No = Enabled Yes = Disabled
	Manual configuration of all paramters (not recommended)	

- **Note:** In NC mode the IQ5 always has a LAN to connection to the internetwork and so cannot join another LAN on the internetwork.

Configure or Disable the Web Server (if required)

- The IQ5's web server enables users to access the web interface for viewing/changing module parameters (including setting up NC mode – see step 23) or interacting with optional
- GraphIQ pages via a web browser.
- Connection to the IQ5's web server can be made via HTTP and/or HTTPS protocol and both these ports are enabled by default.

Note: Where HTTPS is used it will be necessary to configure SSL certificates (see the IQ5 Configuration Manual).

- If access to the web interface is not required it is recommended that both ports are disabled for security.

For example:

- Using the Engineering PC/Laptop (see step 7) open a compatible web browser and access the IQ5 web interface using its IP Address or Hostname.
- If prompted, login using valid system account credentials.
- Select Modules > Networks.
- Select n1 (Ethernet IP).
- Set the Web Server Port Number and/or Secure Web Server Port Number parameters to 0 to disable the port.


- Click 

Download Strategy to IQ5 Controller

Use IQSET to download the strategy to the controller(s).

For a single controller.

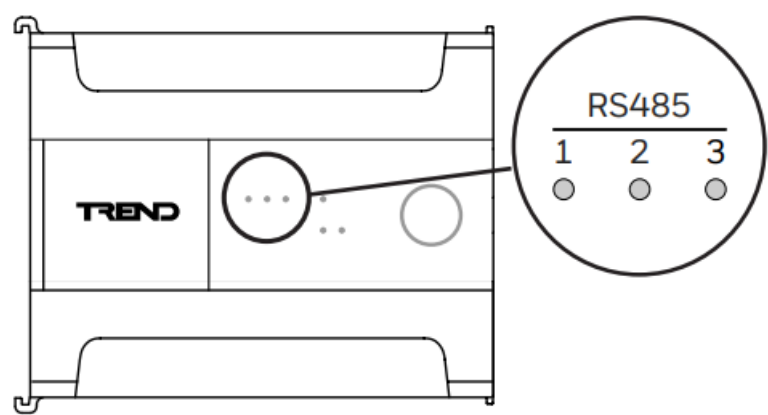
- Select the appropriate controller/strategy in the Project View.



- From the Strategy menu select Create Data File.
- In the System View select the appropriate controller.
- Right-click the controller and select Send File to Device.
- In the File Download dialogue box check that the correct file is selected the in Transfer Directory field.
- Click  to start the download.


For other methods or for downloading to multiple controllers please refer to the IQSET Manual

- **IMPORTANT:** The controller’s date and time **MUST** be set correctly to ensure that the controller’s security certificates can be correctly validated. Communications issues will occur if the security certificates are not valid. This can be done by selecting the option to set the controller’s time is selected when downloading the strategy.
- **Note:** If the strategy uses an NTP server to set the IQ5’s time and date, synchronisation will only occur if the IQ5’s time and the server’s time are within 49 days of each other.
- **Note:** The controller’s date and time may be set up from a controller configured as timewaster.

Check RS-485 Network Indicators (if RS-485 devices are connected)

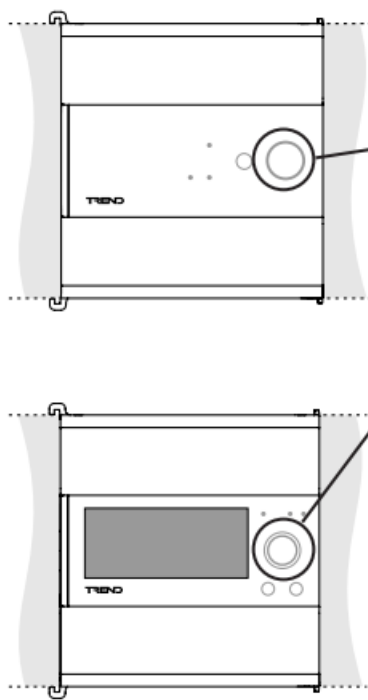




Normal operation indication	
	Port configured OK and communications are good.
	Port not active. No Network module exists in the controller strategy or is not configured correctly.





Fault indication	
	No communications or no network connected.

Note: A controller configured for NC operation will show  on port 1 until BACnet devices are connected.

Check Status Indicator of T1L IO Bus Modules (if connected)



Normal operation indication	
	Module operational and address set OK. If all modules are in this state, go to step 29 on page 14.
	Module is booting up - please wait a few minutes and check again.

Fault indication	
	Module not addressed correctly - go to step 28 on page 13.
	
	HOA module not addressed correctly - go to step 28 on page 13. <i>Note: Rotary control has been operated.</i>
	Module not powered - check connection from previous module or separate PSU (if applicable)

Setting the Address of a Module

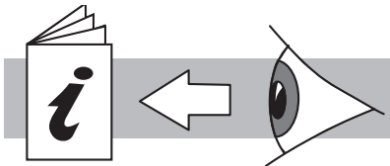
The IQ5 controller will automatically attempt to match each physical I/O module with its corresponding strategy I/O module and set its address accordingly.

However, the controller will be unable to set the address of a module if:

- there is more than one unaddressed physical module of the same type,
- there is more than one unaddressed strategy module of the same type, or
- there is no corresponding I/O module in the strategy.

Should any of the above situations arise it will be necessary to set the address of any affected module using either of the following methods.

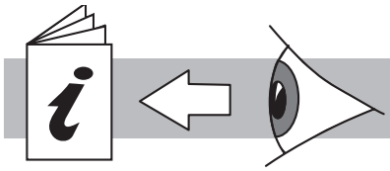
Method 1: Use the IQ Tool Soft Addresser Applet in IQ®SET.



IQ Tool Soft Addresser Applet Manual (TE201356)

- Use the applet to assign the physical I/O module to the appropriate strategy I/O module.

Method 2: Use the controller web interface.



IQ5 User Guide (TE201490)

- Login to the controller's web interface.
- Access the I/O Module page and enter module addresses as required.



Note: If a module is not visible in either the applet or the web interface, it may be because it has already be used with another controller. A module becomes bound to the first controller it connects to over the T1L bus. If connecting the module to a different controller it will need to be reset as shown in section 7 on page 20.

Identifying a Module using the 'Wink' Function (if required)

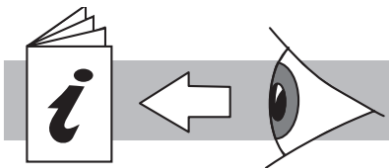
To help identify a specific module it can be placed in 'wink' mode, either from the module itself or set up tool. While

in wink mode the module's service indicator  will flash and the status indicator ring of the corresponding controller will also flash green.



Method 1: Use the module's service button..

- Press the module's service button  briefly (<3 seconds). The module's service indicator  will flash for approximately 2 minutes, showing that the device is in wink mode.
- Open either the IQ Tool Soft Addresser Applet or the controller's web interface (see Method 2 and 3).
- Any module in wink mode will have its Wink parameter set to 'On'.

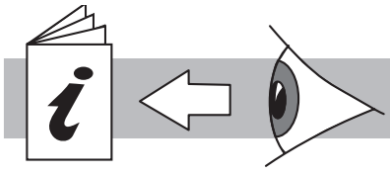
Method 2: Use the IQ Tool Soft Addresser Applet in IQ@SET.



IQ Tool Soft Addresser Applet Manual (TE201356)

- Click the button for the appropriate module  button for the appropriate module.
- The button background will flash green and the module's service indicator  will flash, showing that the device is in wink mode.
- Click the button again to turn off wink mode.

Method 3: Use the controller web interface.



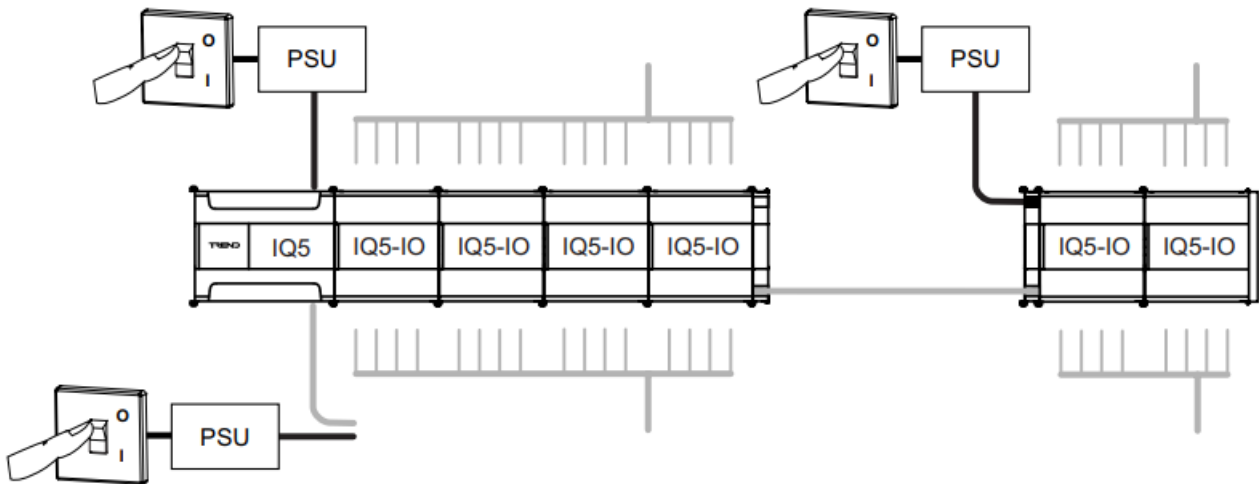
IQ5 User Guide (TE201490)

- Login to the controller's web interface.
- Access the I/O Module page.
- In the Wink column set the parameter to 'On' for the appropriate module.

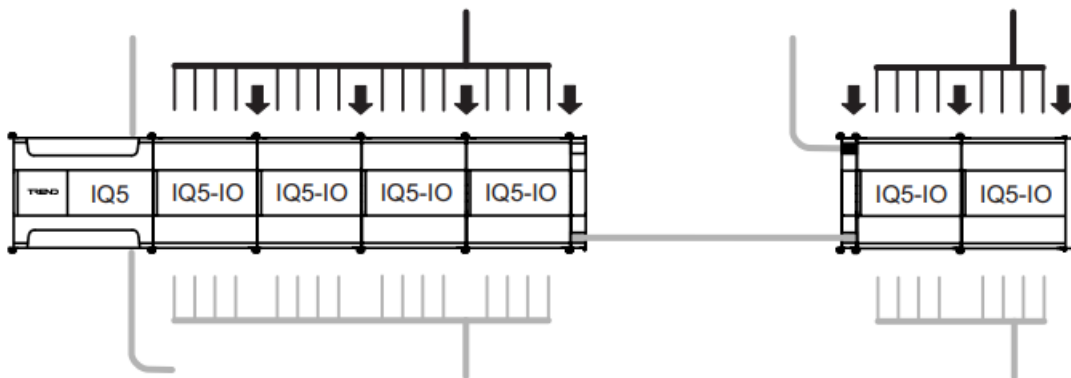


- The module's service indicator will flash, showing that the device is in wink mode. It will continue to flash until the corresponding Wink parameter is set back to 'Off'.

Switch Off Controller (including additional I/O Bus PSUs)

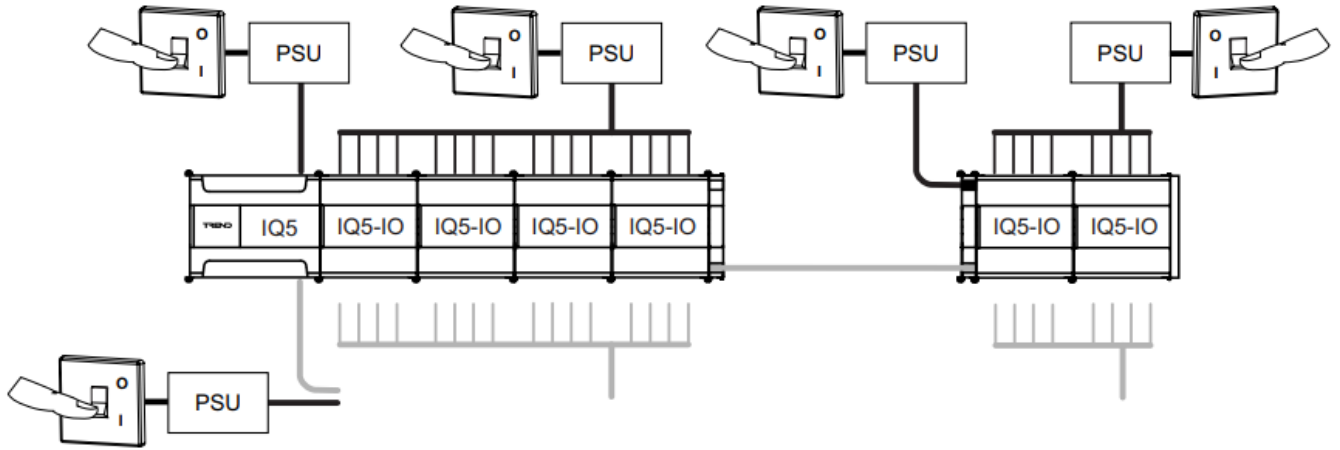


30 Reconnect Inputs



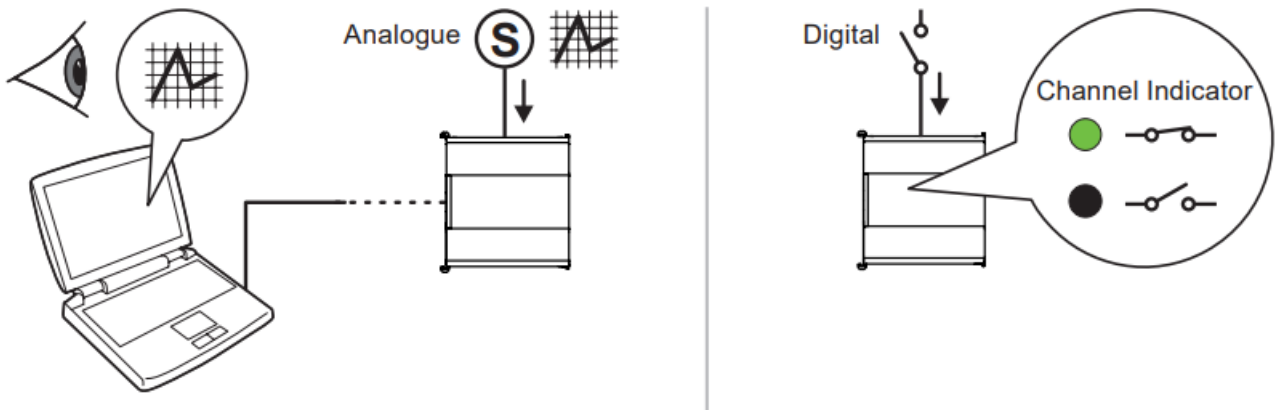
- **CAUTION:** Check that each input connection is appropriate for the IO module input type. For example, ensure that a mains voltage is not applied to a low voltage input.

Switch On Controller & Input Supplies (including additional I/O Bus PSUs)



Check Input Operation

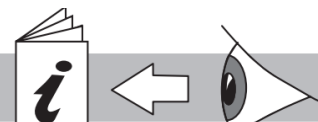
IQ5-IO Modules



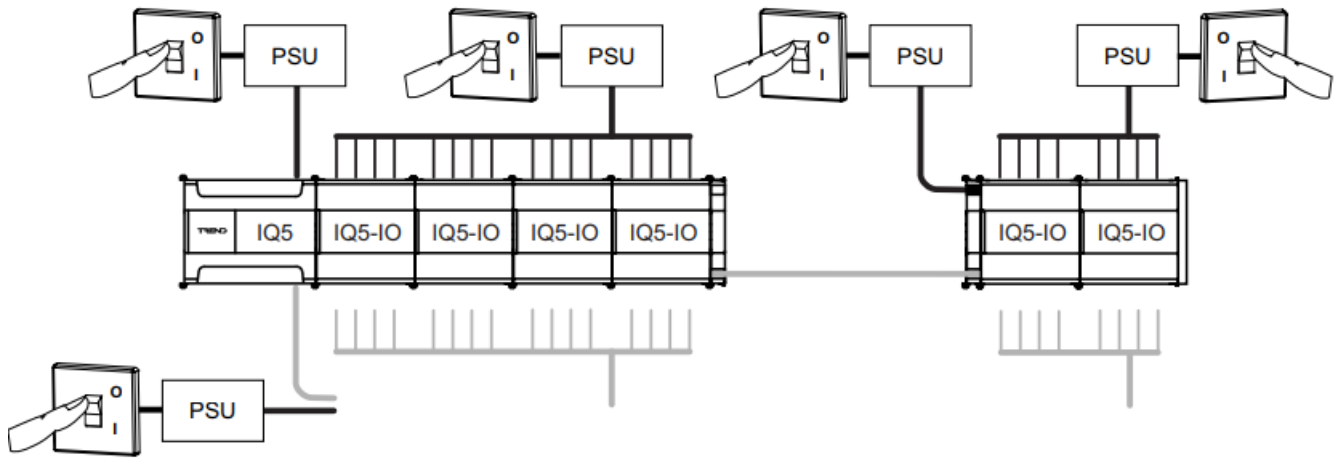
IQ4/IO Modules

- 
 IQ4/IO/.. Installation Instructions – Configuring (TG201161) Section 4 Only

XCITE/IO Modules

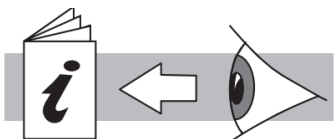
- 
 XCITE/IO/.. Installation Instructions – Configuring (TG200627) Section 4 Only

Switch Off Controller & Input Supplies (including additional I/O Bus PSUs)



Backup Strategy

- Once the system is working as expected, it is good practice to upload the strategy from each controller into IQSET to create a backup.
- If required, you can also compare this uploaded strategy with that held in your project and check for any differences.



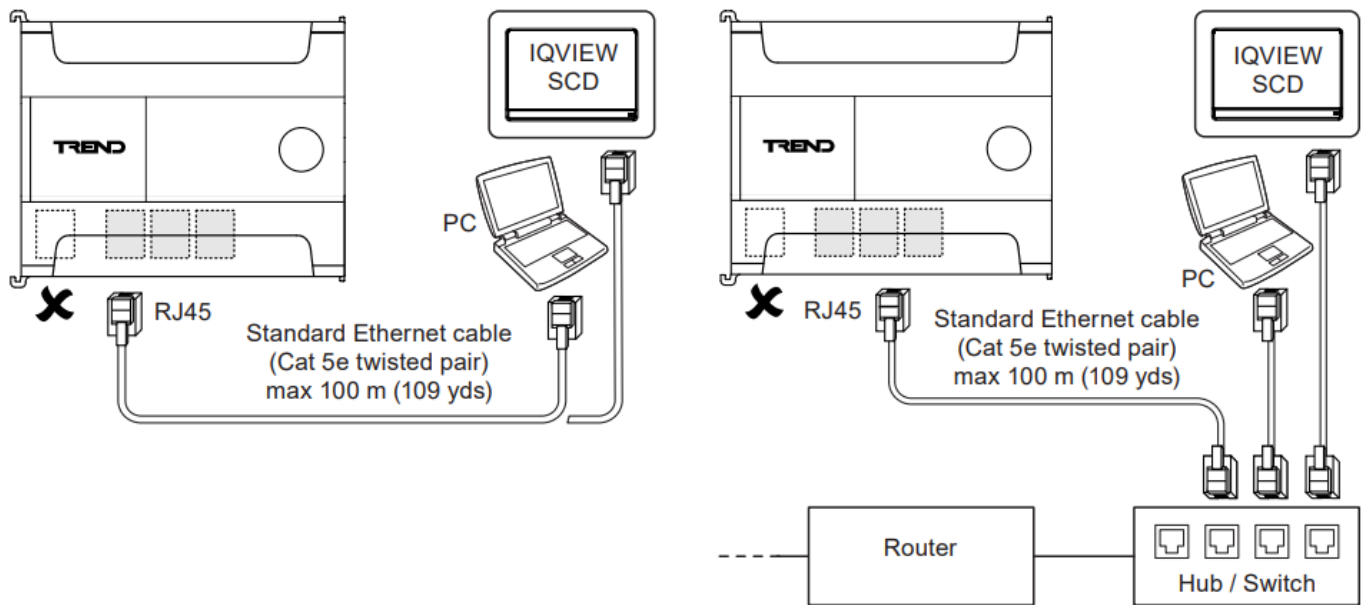
IQSET Manual (TE200147)

Install Supervisors or Displays (if required)

- If a supervisor or local display is required, install these now following the appropriate installation instructions and the guidance notes below. Otherwise go to step 32 on page 18.

Connection Method	Suitable for			
	IP Tool	IQSET	Supervisor (e.g. IQVISION)	Web Interface (e.g. IQVIEW SCD for IQ5)
Direct via Ethernet Port	✓	✓*	✓*	✓
Via Ethernet Network	✓	✓*	✓*	✓
Direct via USB Engineering Port	✗	✓	✗	✗

Connection requires a vCNC to be configured on the target controller.

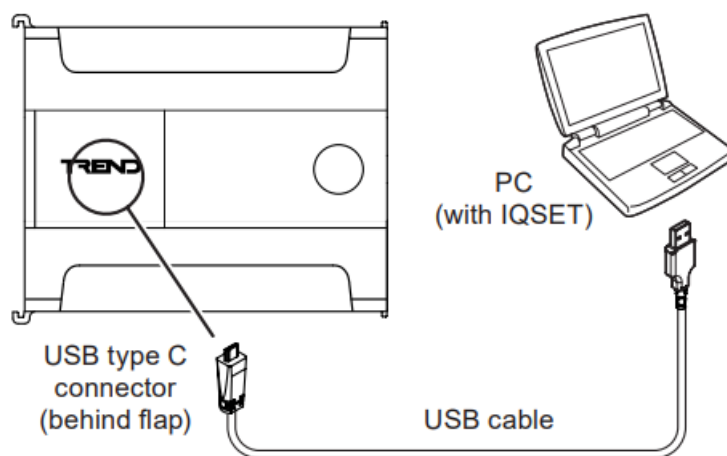


- To make a connection with IQSET or supervisor ensure that a vCNC is available in a Trend device on the same Ethernet Trend network and connect to the vCNC as described in the supplied documentation.

Note: If connecting with IP Tool, the PC should be on the same Ethernet segment as the IQ5.

- To make a connection with a web browser run the web browser on the PC and access the IQ5's IP address or host name.
- To make a connection with an IQVIEW SCD, install the IQVIEW SCD application on the controller, then configure the display device with the URL of the IQ5 controller. For full details see IQVIEW Single Controller Display for IQ5 Manual (TE201504).

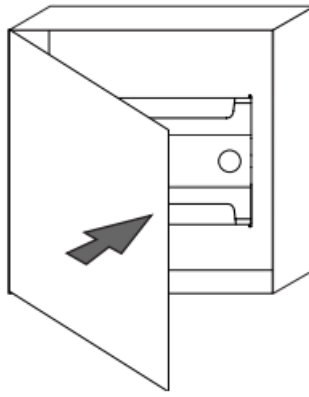
Direct Connection via USB Engineering Port



This method is only suitable for a temporary connection with IQSET during system commissioning or fault finding.

Close Panel / Enclosure

- The configuration procedure is now complete!



RESET IQ5 CONTROLLER TO FACTORY DEFAULTS

A factory reset will erase the strategy and reboot the controller into its default configuration.

Isolate Power and Disconnect All I/O

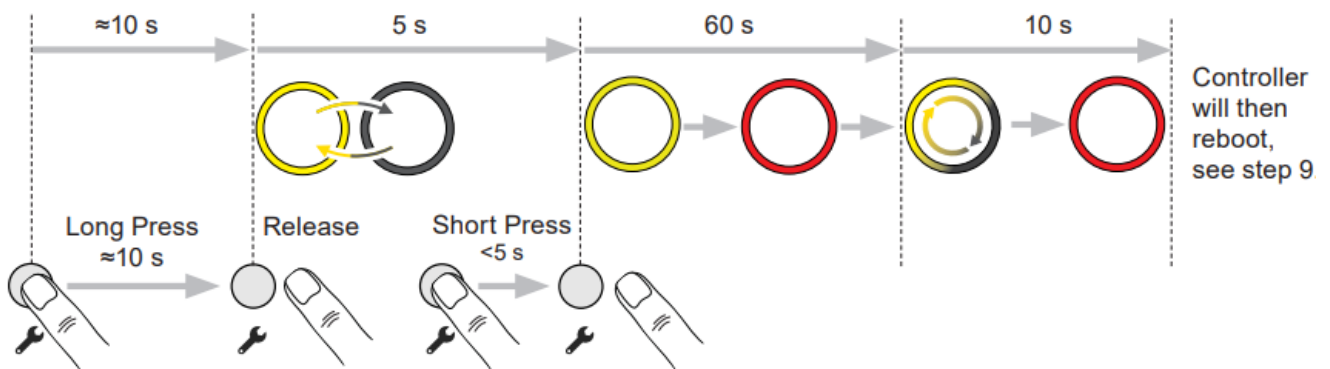
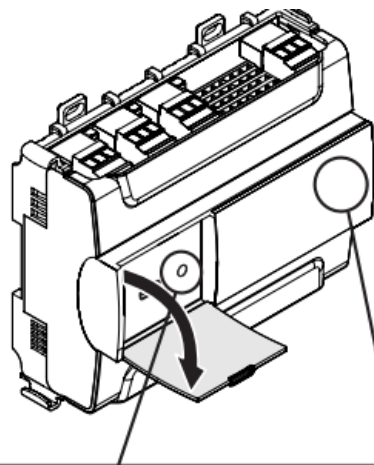
Follow steps 1, 2, 4, 8 and 9 (on pages 1 to 4) to:

- Isolate Power,
- Open Panel,
- Disconnect All I/O,
- Unplug all Ethernet cables. Any RS-485 networks may be left connected,
- Switch on power to IQ5 only,
- Wait for controller to settle.

Perform the Reset



- Press and hold down the service button (located behind the drop down flap) until the ring indicator flashes yellow, then release the button. To initiate the reset press the button again while the indicator is still flashing.
- The reset process may take up to several minutes depending on the controller type. Do not remove power to the controller until the process has completed.
- While the controller is erasing the strategy, the ring indicator will remain yellow and appear to 'rotate'. When the reset is complete the controller will reboot as shown in step 9 on page 4.
- The strategy, user modules (passwords, etc), alarm logs, and plots records are cleared down, and all other parameters will be returned to their default settings as shown in step 15 on page 7.
- **Note:** Time and date are left at their current values, and the license is not affected by the reset.



RESET IQ5-IO MODULE TO FACTORY DEFAULTS

A factory reset will erase all input/output settings and module address and reboot the module into its default configuration.

Isolate Power and Disconnect All I/O from the Module

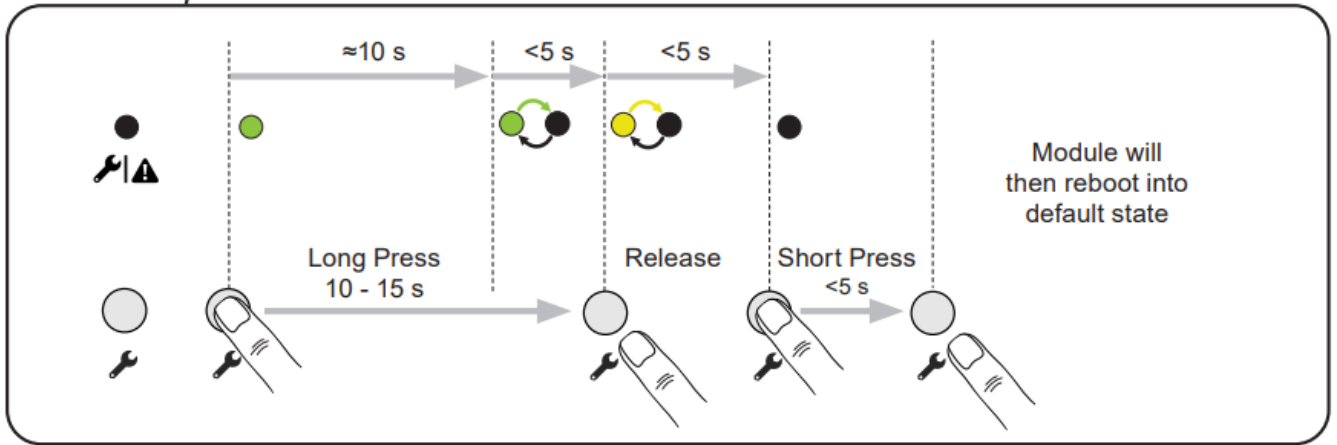
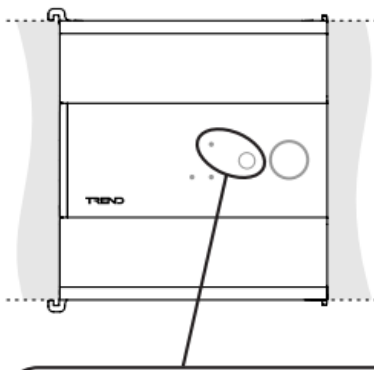
Follow steps 1, 2, 4, 8 and 9 (on pages 1 to 4) to:

- Isolate any power supplies used by the module inputs or outputs,
- Open panel,
- Disconnect all I/O from the module,
- Isolate the module power supply.

Perform the Reset

With the module powered up, use the service button to initiate the reset process as follows:

- The reset process will only take a few seconds depending on the module type. Do not remove power to the module until the process has completed.
- When the reset is complete the module will reboot and the controller will attempt to re-address the module as shown in step 1 on page 14.



Reconnect Inputs & Outputs and Check Operation


Follow the guidance from step 27 on page 12, through to step 31 on page 17.



Please send any comments about this or any other Trend technical publication to

techpubs@trendcontrols.com

- © 2023 Honeywell Products and Solutions SARL, Connected Building Division. All rights reserved.
Manufactured for and on behalf of the Connected Building Division of
- Honeywell Products and Solutions SARL, Z.A. La Pièce, 16, 1180 Rolle, Switzerland by its Authorized Representative, Trend Control Systems Limited.
- Trend Control Systems Limited reserves the right to revise this publication from time to time and make changes to the content hereof without obligation to notify any person of such revisions or changes.
- Trend Control Systems Limited
- St. Mark's Court, North Street, Horsham, West Sussex, RH12 1BW, UK.
 - Tel: +44 (0)1403 211888,
 - www.trendcontrols.com
- IQ5, IQ5-IO Controller & I/O Modules Installation Instructions – Configuring TG201483 Issue 1, 04-Oct-2023.

	<p>TREND IQ5 BMS Controller Platform [pdf] Instruction Manual</p> <p>IQ5 BMS Controller Platform, IQ5, BMS Controller Platform, Controller Platform, Platform</p>
--	--

References

- [H Trend Controls | Honeywell Building Technologies](#)
- [H Honeywell - The Future Is What We Make It](#)
- [🌐 Pages - default](#)
- [User Manual](#)