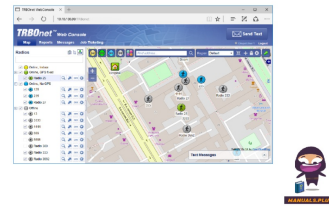


## TRBONET Web Console Software



# TRBONET Web Console Software User Guide

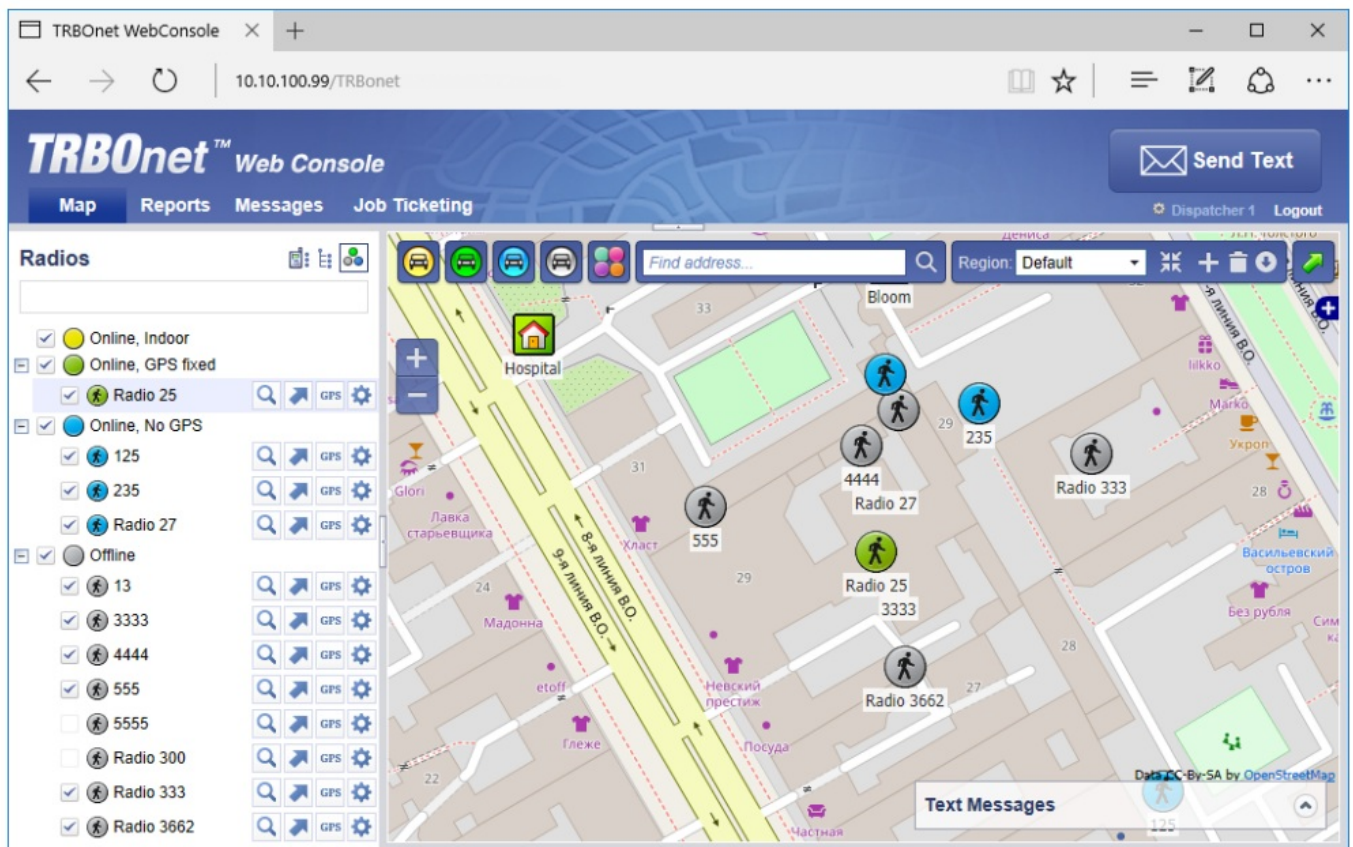
[Home](#) » [TRBOnet](#) » TRBONET Web Console Software User Guide 

## Contents

- 1 TRBONET Web Console Software
- 2 Product Information
- 3 Product Usage Instructions
- 4 FAQ (Frequently Asked Questions)
- 5 Introduction
- 6 Installation
- 7 Configuration
- 8 Operation
  - 8.1 Map
  - 8.2 Job Ticketing
- 9 ABOUT COMPANY
- 10 Documents / Resources
  - 10.1 References
- 11 Related Posts



## TRBONET Web Console Software



## Product Information

### Specifications

- **Product Name:** TRBOnet Web Console
- **User Guide Version:** 6.2
- **Last Revision Date:** 25 January 2024
- **Manufacturer:** Neocom Software
- **Office Address:** 150 South Pine Island Rd., Suite 300 Plantation, FL 33324, USA
- **Sales Contacts:**
  - **EMEA:** +44 203 608 0598
  - **Americas:** +1 872 222 8726
  - **APAC:** +61 28 607 8325
- **Website:** [www.trbonet.com](http://www.trbonet.com)
- **Email:** [info@trbonet.com](mailto:info@trbonet.com)

## Product Usage Instructions

### Introduction

This product is designed for MOTOTRBO radio network administrators responsible for dispatch operations. It provides guidance on installation, configuration, and maintenance of the TRBOnet Web Console application.

### Installation

#### Installing Web Console

Follow these steps to install the Web Console:

1. Ensure your account has sysadmin privileges.
2. Proceed with the installation process as per the provided guidelines.

## **Configuration**

### Configuring Web Console

To configure the Web Console:

1. Access the settings menu within the Web Console interface.
2. Adjust the configurations as needed based on your requirements.
3. Save the changes and ensure they are applied successfully.

## **FAQ (Frequently Asked Questions)**

- **What is the purpose of TRBOnet Web Console?**

TRBOnet Web Console is an online application that provides access to the system via a web browser, allowing dispatchers to monitor the system without special software installed.

- **What are the key features of TRBOnet by Neocom Software?**

Key features include flexible cross-patching, extensive connectivity options, location awareness features, support for communication scenarios in various markets, and full audio and activity logging with built-in reports.

## **Introduction**

### **About This Guide**

This document is intended for MOTOTRBO radio network administrators responsible for the dispatch operations. It provides guidance on the installation, configuration, and maintenance of the TRBOnet Web Console application.

### **About TRBOnet Web Console**

- TRBOnet Web Console is a special online application. It is an extension for TRBOnet Dispatch Software which allows dispatchers to get access to the system via a Web browser. The Web Console is the best solution for carriers, operators and systems with a huge number of users.
- This application allows you to monitor your system without any special software installed on your computer.

### **About TRBOnet by Neocom Software**

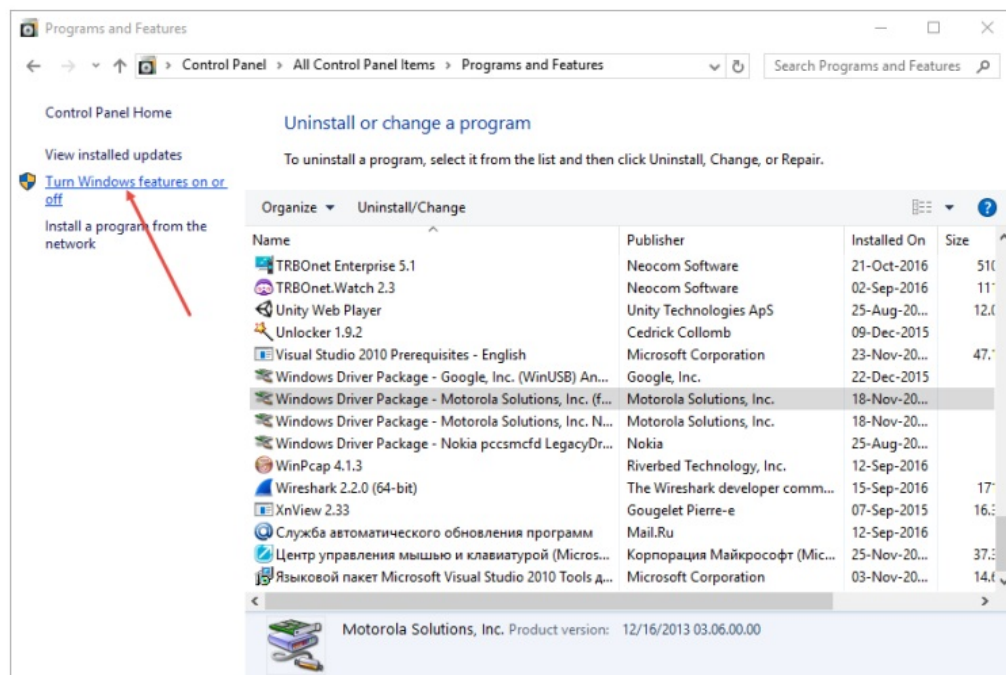
- TRBOnet is a suite of professional applications for dispatch centers of MOTOTRBO™ radio networks developed by Neocom Software since 2008. TRBOnet manages voice, text and data communication paths to network endpoints and provides a unified graphical dispatcher workbench interface for all the messaging and workforce orchestration tasks. Recognized as the Best Radio Application Partner by Motorola Solutions, TRBOnet enjoys a proven track record of success in business-critical radio network deployments worldwide.
- The TRBOnet family of products deliver:
  - Flexible, connection type independent cross-patching of subscriber groups, both preconfigured by network designers and improvised by dispatchers with a drag-and-drop ease.
  - Extensive connectivity options for any mode MOTOTRBO networks with public phone, SIP and private VoIP interconnects, SMS and email gateways, intercom among multiple dispatchers.

- Comprehensive location awareness features which include integration with a variety of online and offline map providers, indoor positioning, geofencing, route and speed control and GPS event-driven workflows.
- Support for communication scenarios typical for key vertical markets, such as 'lone worker' monitoring, site alarms, job ticketing, RFID integration, field device telemetry collection and many others.
- Full audio and activity logging complemented by a rich set of configurable built-in reports.

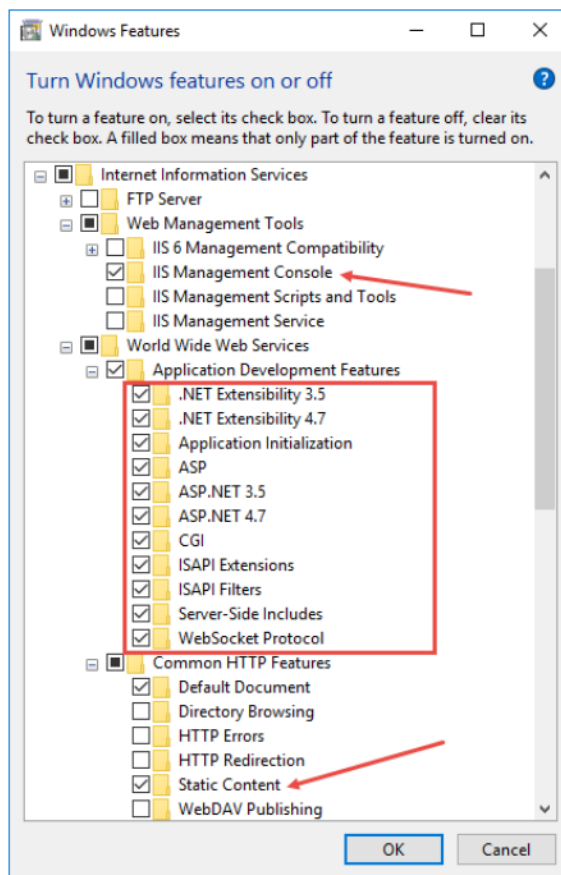
## Installation

### Installing Web Console

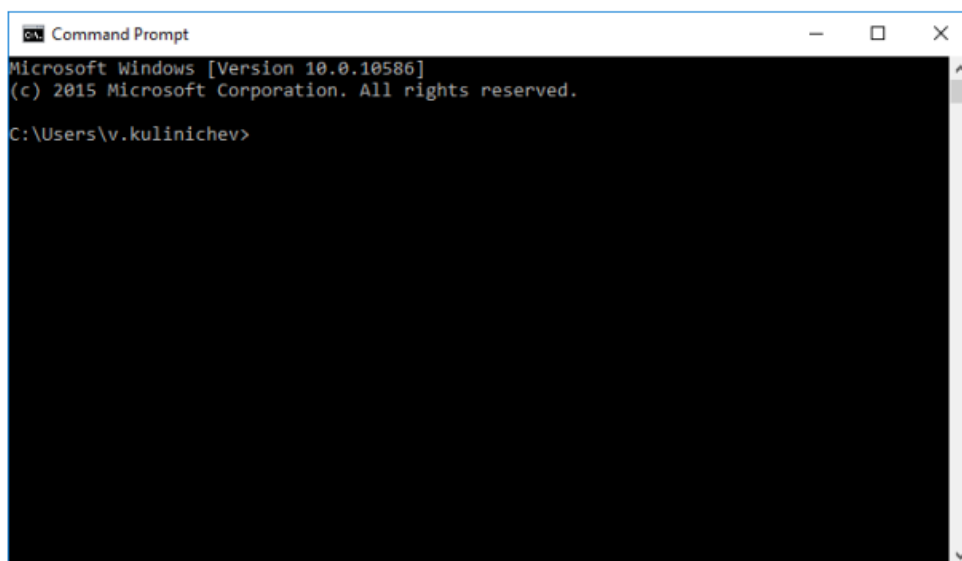
- Click Start>Control Panel>Programs and Features.
- Click the Turn Windows features on or off link.



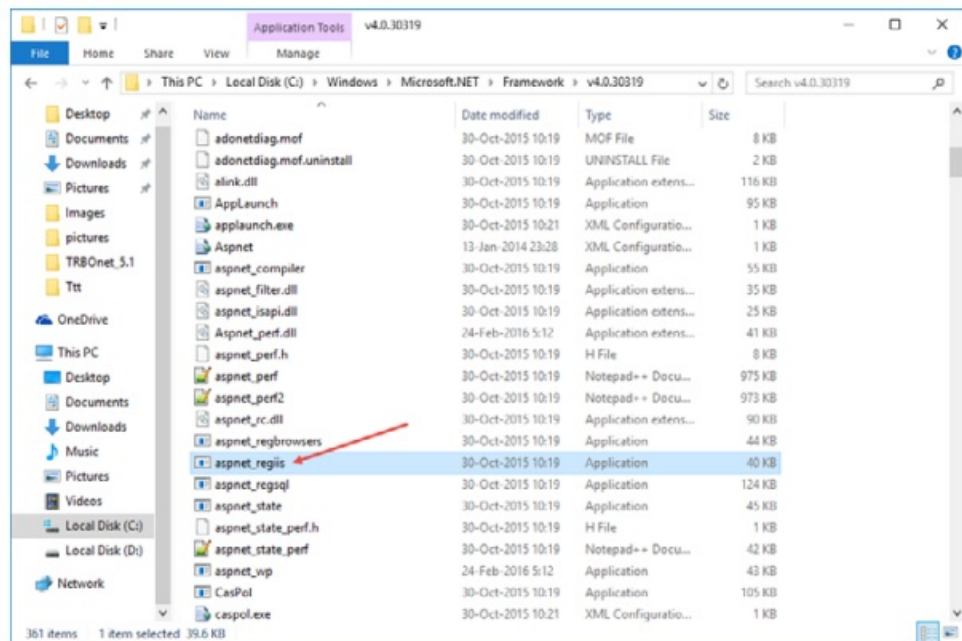
- In the Windows Features dialog box, expand Internet Information Services:
  - Expand Web Management Tools and make sure that IIS Management Console is selected.
  - Go to World Wide Web Services>Application Development Features and make sure all of them are selected.
  - In addition, expand Common HTTP Features make sure that Static Content is selected.



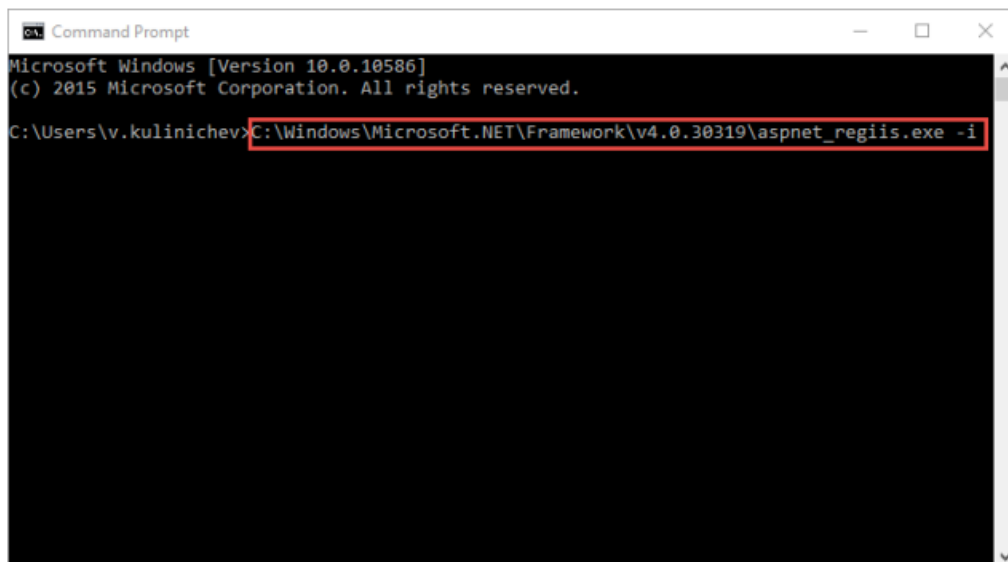
- Restart your PC.
- Click Start>All Programs>Accessories>Command Prompt.



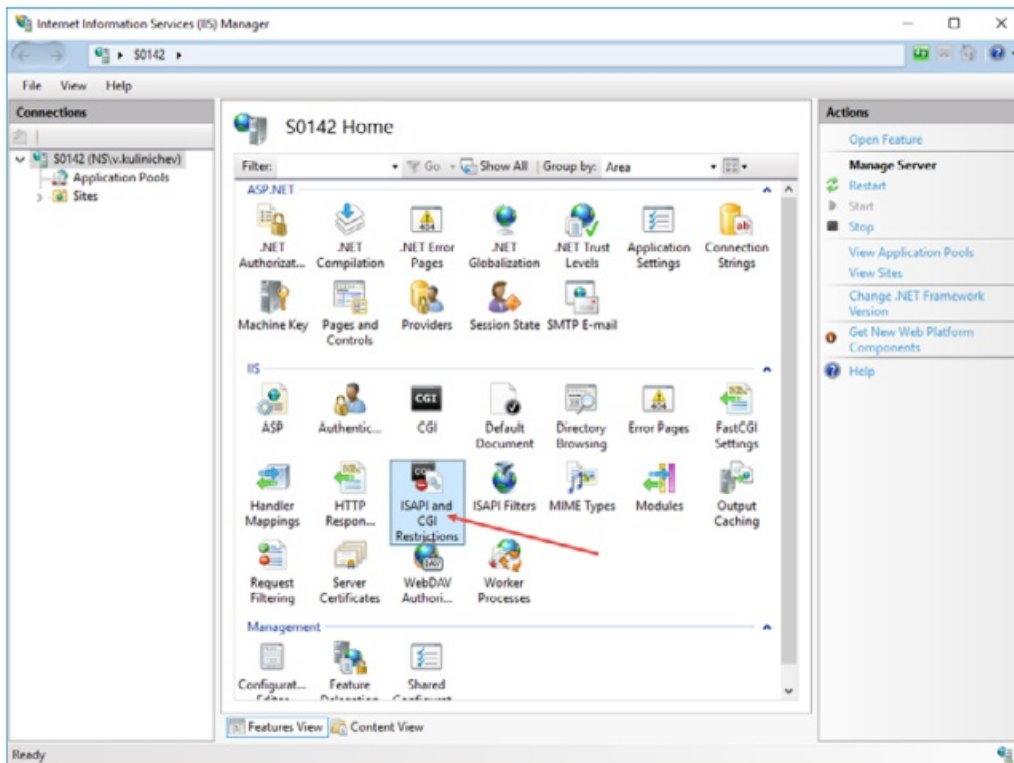
- For 32-bit systems:
  - Go to This PC>Local Disk (C: )> Windows > Microsoft.NET > Framework > v4.0.30319/aspnet\_regiis.
- For 64-bit systems:
  - Go to This PC>Local Disk (C: )> Windows > Microsoft.NET > Framework64 > v4.0.30319/aspnet\_regiis.



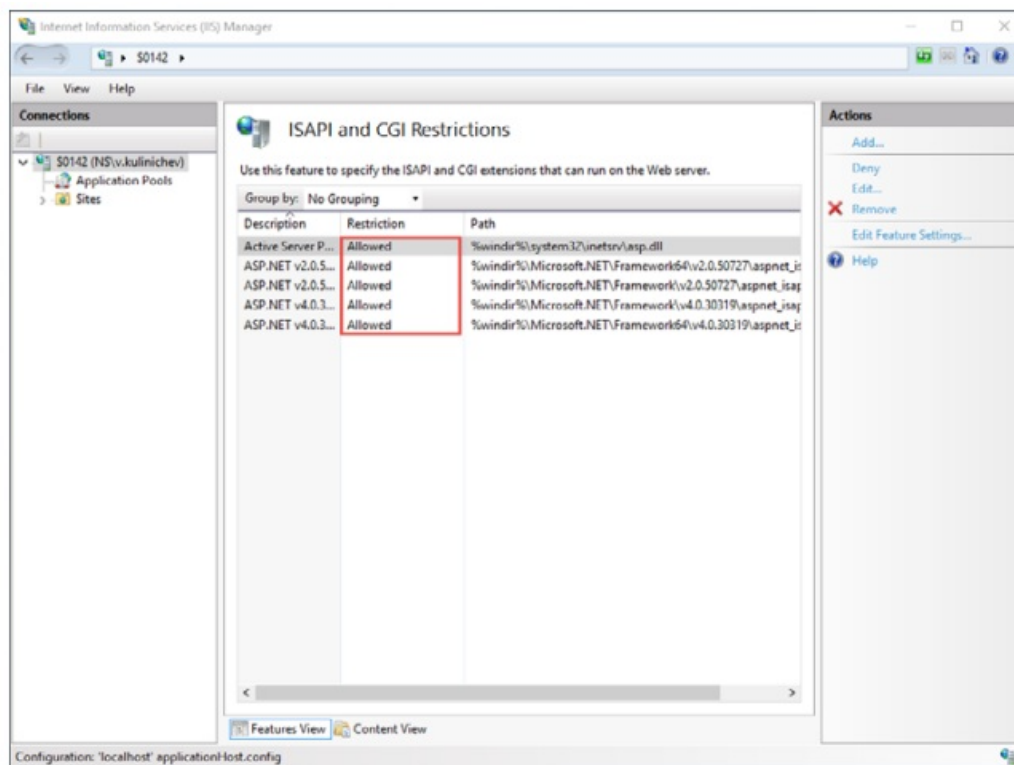
- Drag the aspnet\_regiis file into the Command Prompt then press the space bar and add the -i key. Then press the Enter key:



- Go to Control Panel > Administrative Tools.
- Double-click the Internet Information Services (IIS) Manager shortcut and double-click ISAPI and CGI Restrictions.

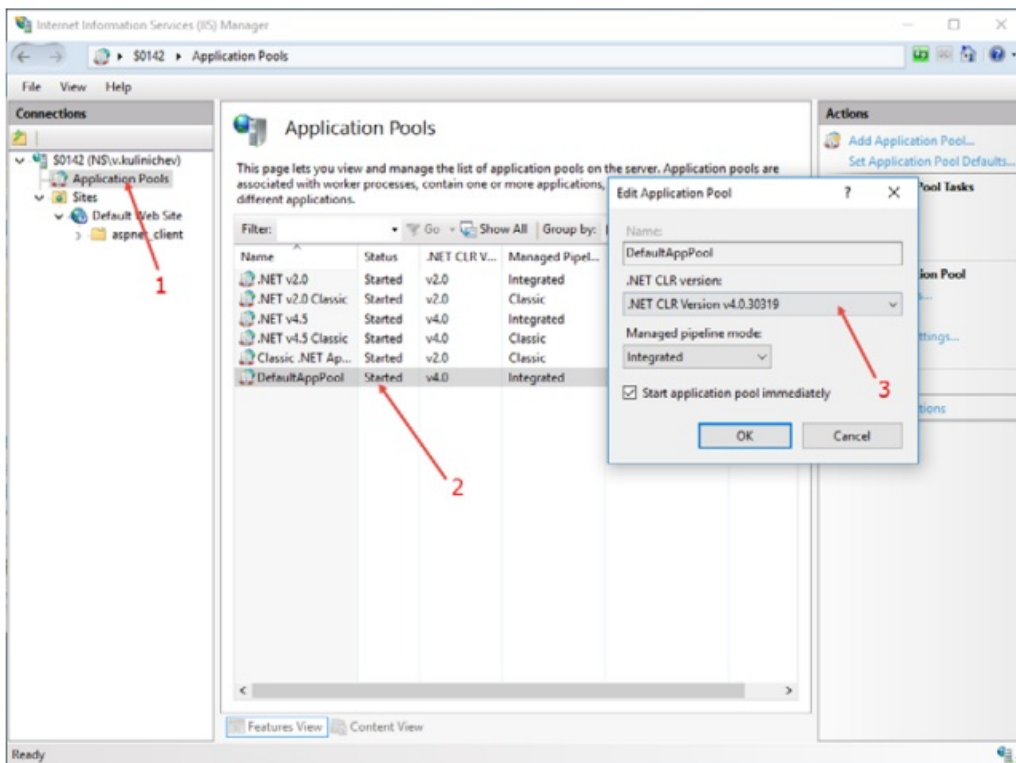


- In the Restriction column, set Allowed in all lines.

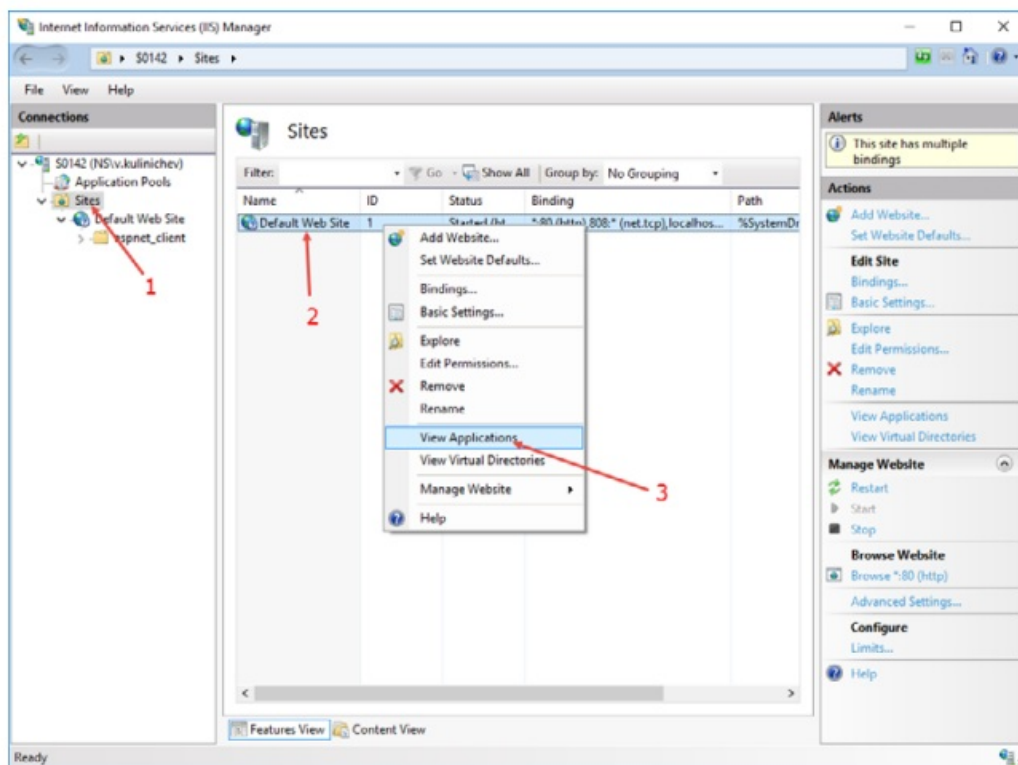


- Copy the Web Site archive WebConsole to Computer > Local Disc (C: ) > inetpub to create a folder for the Web Console.
- Go to Application Pools (1). Double-click DefaultAppPool (2) and check the .Net CLR Version (3):



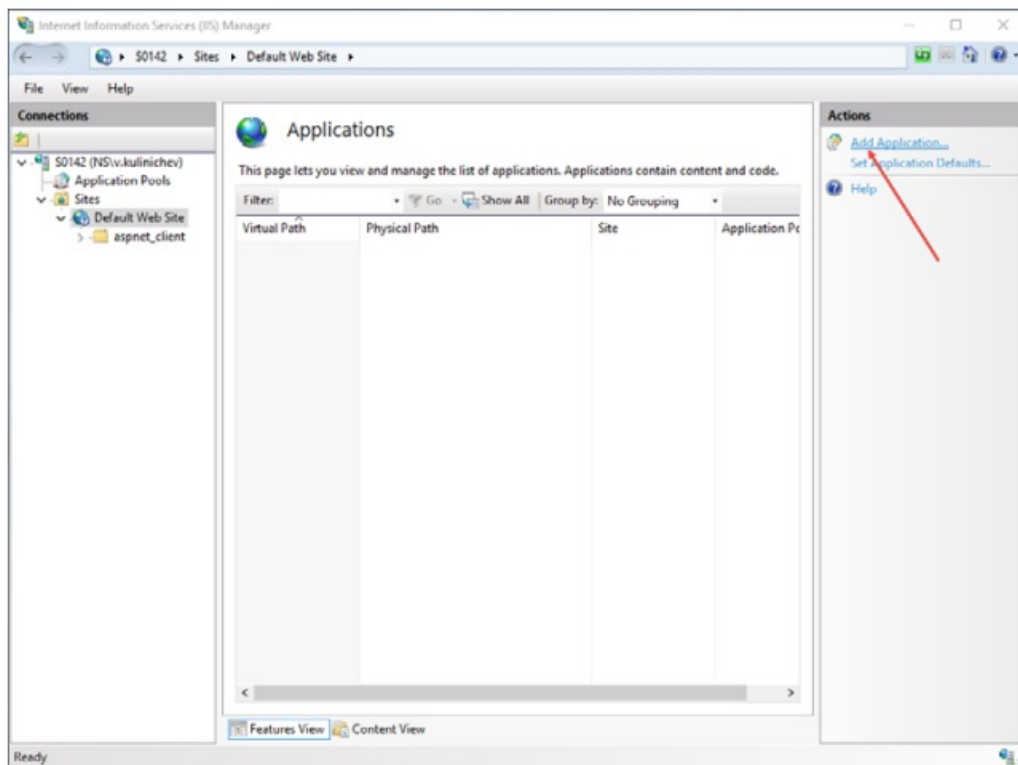


- Click Sites (1), right-click Default Web Site (2) and choose View Applications (3):

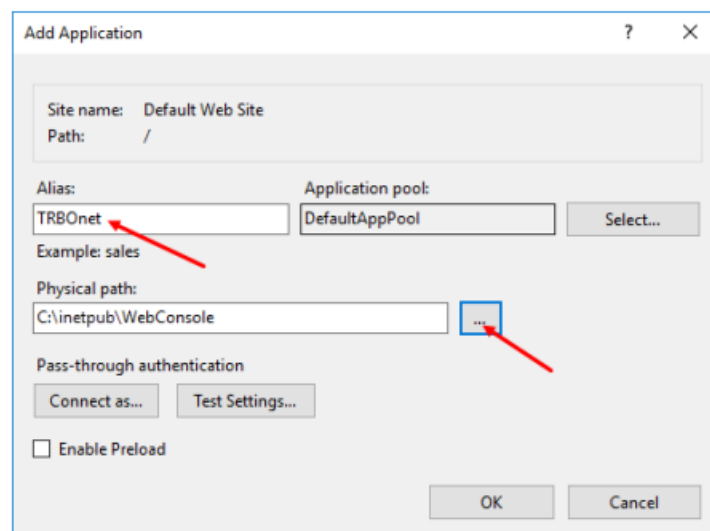


- Click the Add Application link.

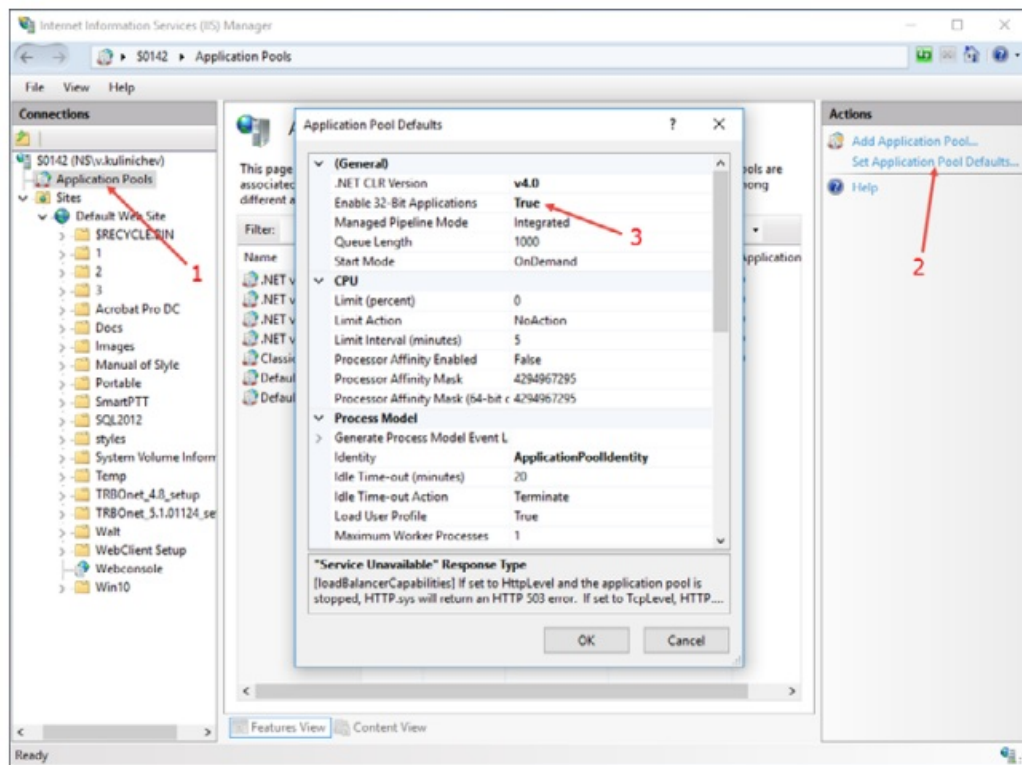




- Specify the Alias and Physical path for the application:

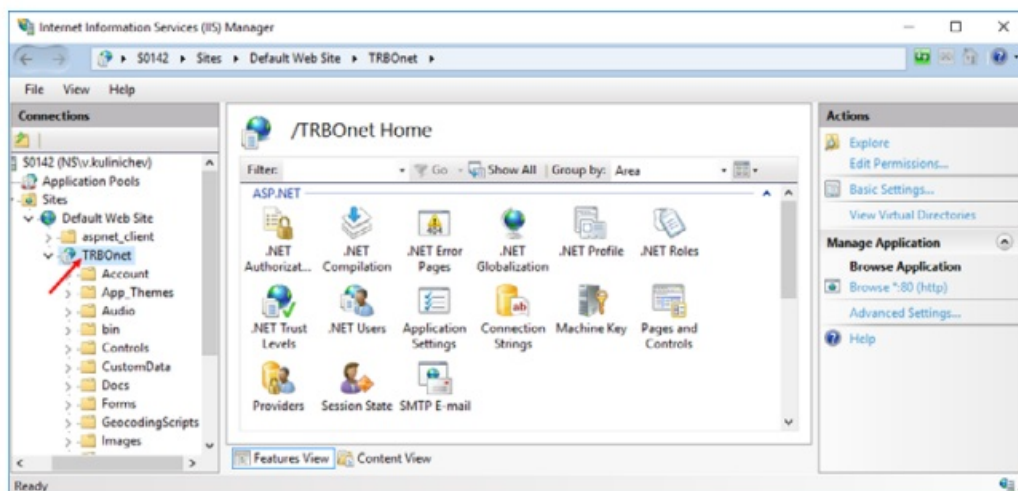


- Browse for the folder with unarchived Web Console.
- Click OK.
- Select Application Pools (1) and click the Set Application Pool Defaults link (2):



- Set Enable 32-Bit Applications to True (3).

The Web Console will be added as an application to under the Default Web Site:

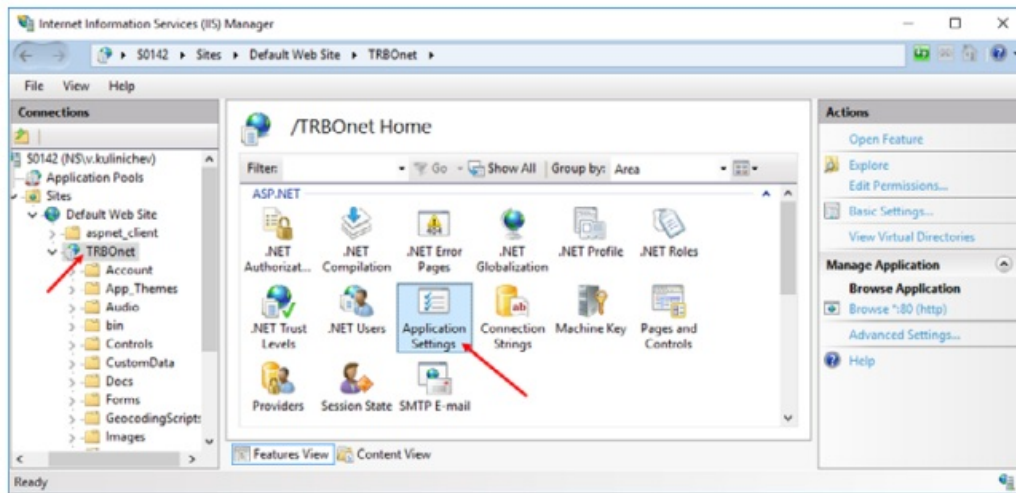


**Note:** Make sure your account has sysadmin privileges.

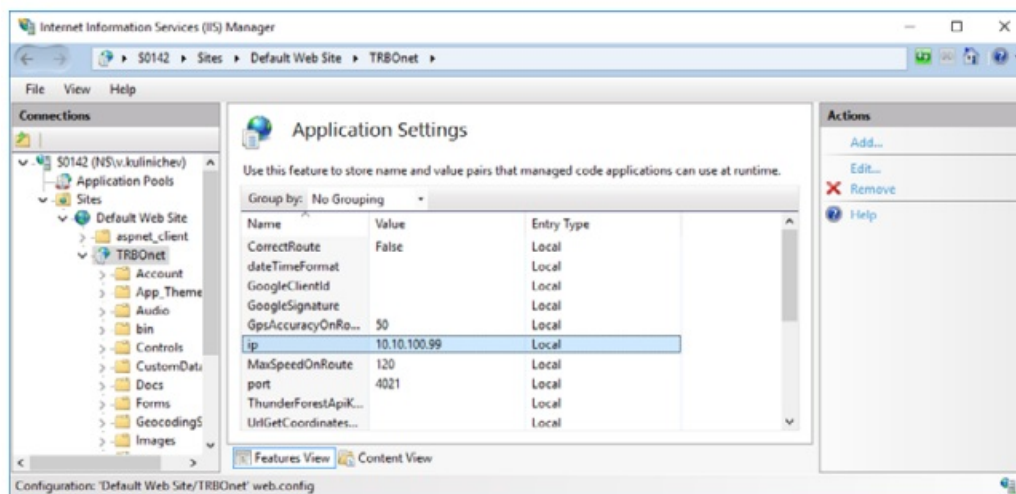
## Configuration

### Configuring Web Console

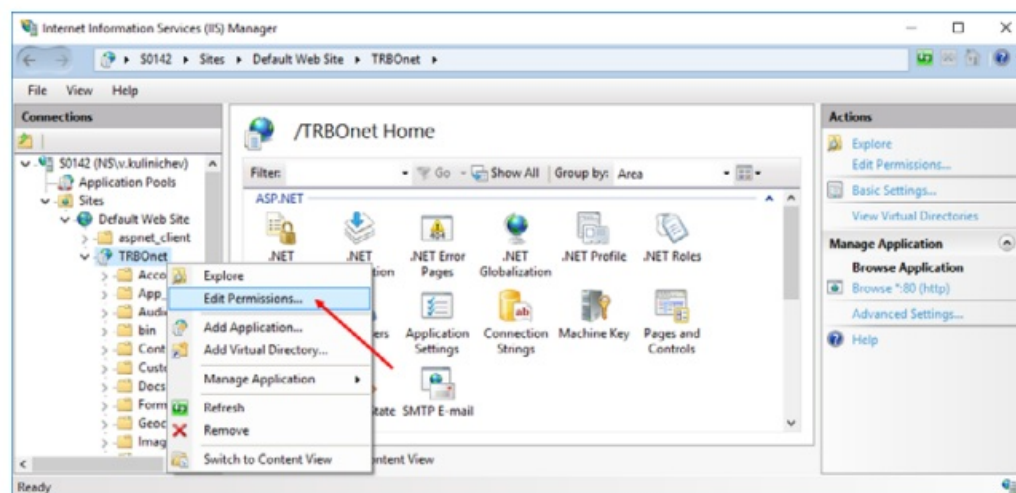
- If TRBOnet Server is not installed on the PC, select the application and double-click Application Settings:



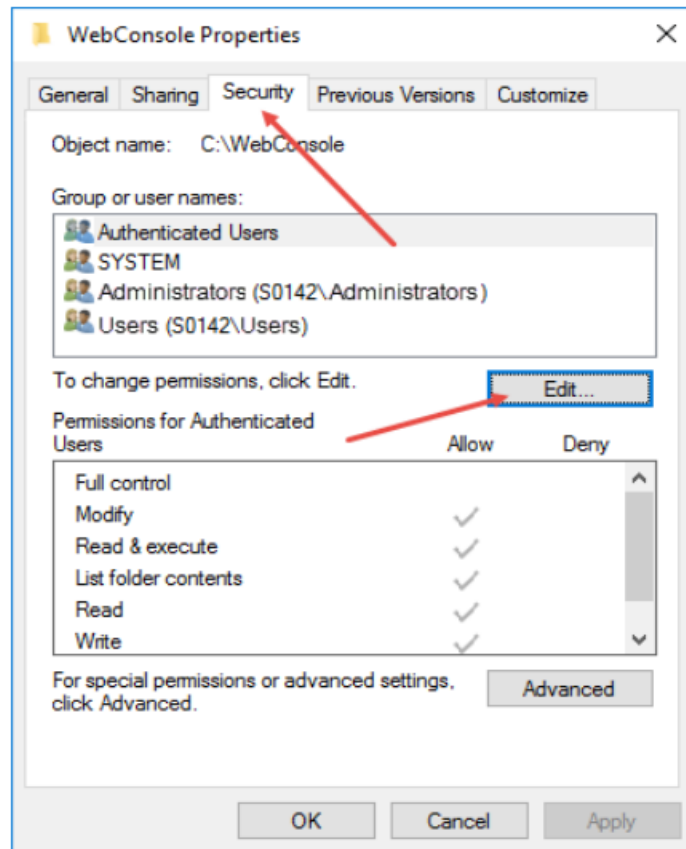
- Specify the IP address and Port of the PC with installed TRBOnet Server:



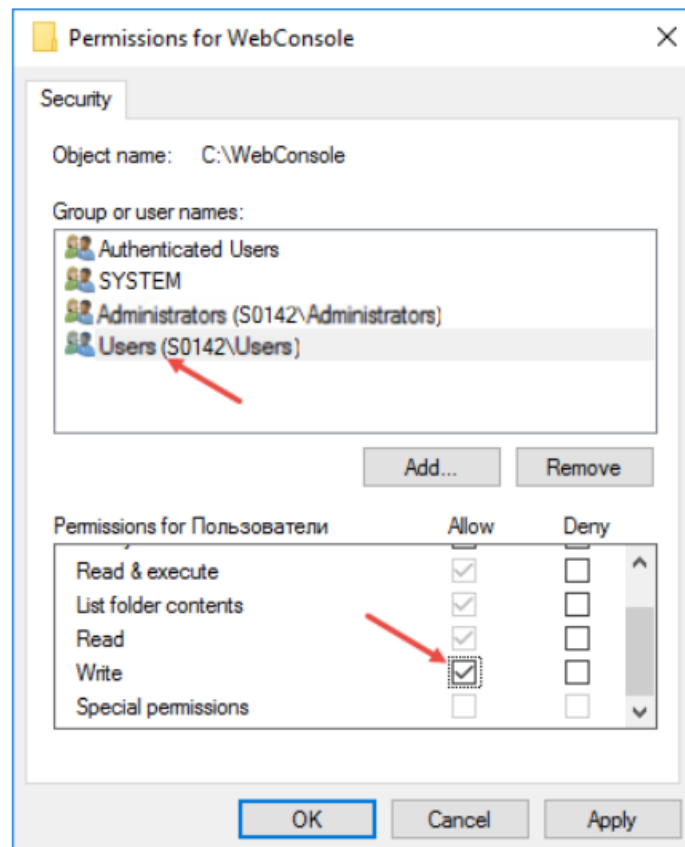
- Right click TRBOnet Web Console and choose Edit Permissions.



- Click the Security tab and then click the Edit button to edit permissions:



- Select User in the Users list. In the Allow column, select Write:

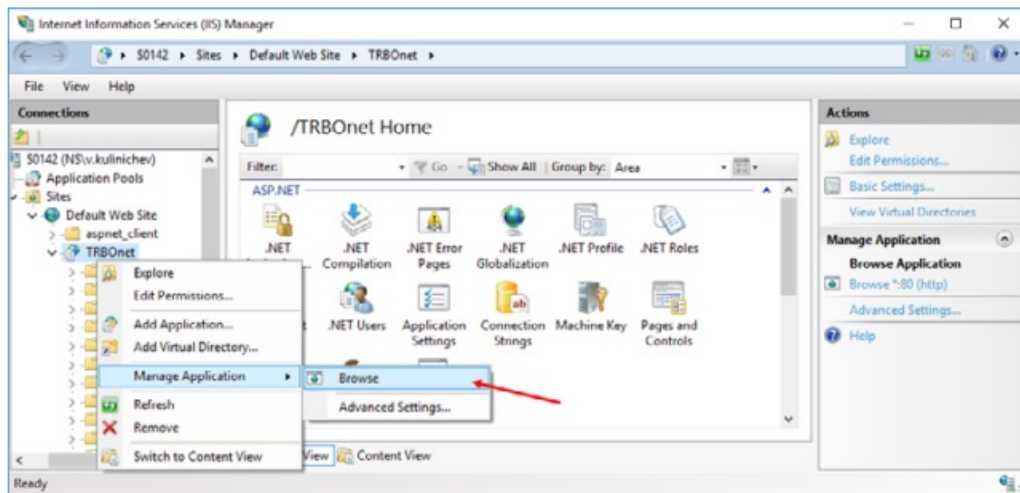


- Click Apply.
- Click OK.

To open TRBOnet Web Console:

- Go to Internet Information Services (IIS) Manager > Connections > Sites > Default Web Site > TRBOnet

- Right-click it and choose Manage Application > Browse.



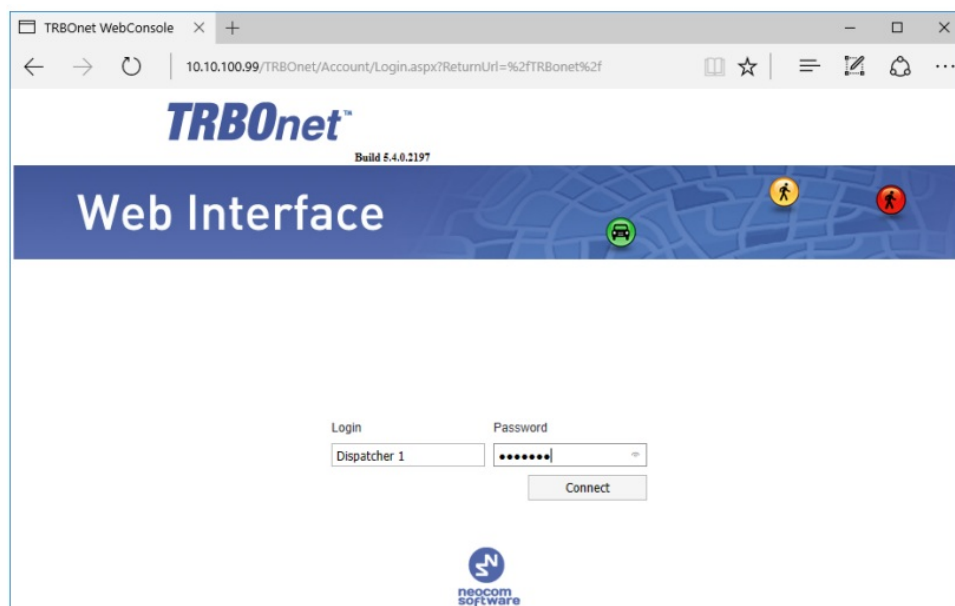
TRBOnet Web Console is now ready for operation.

## Operation

### Connecting to TRBOnet Server

- Launch the browser.
  - In the browser's address bar, enter the IP address of the PC with the installed TRBOnet Web Console, and the path (for example, 10.10.100.99/TRBOnet).
- Note:** For the path, see section 2, Installation, IIS Manager>Add Application>Alias

As a result, the TRBOnet Login page will open:



- **Login**

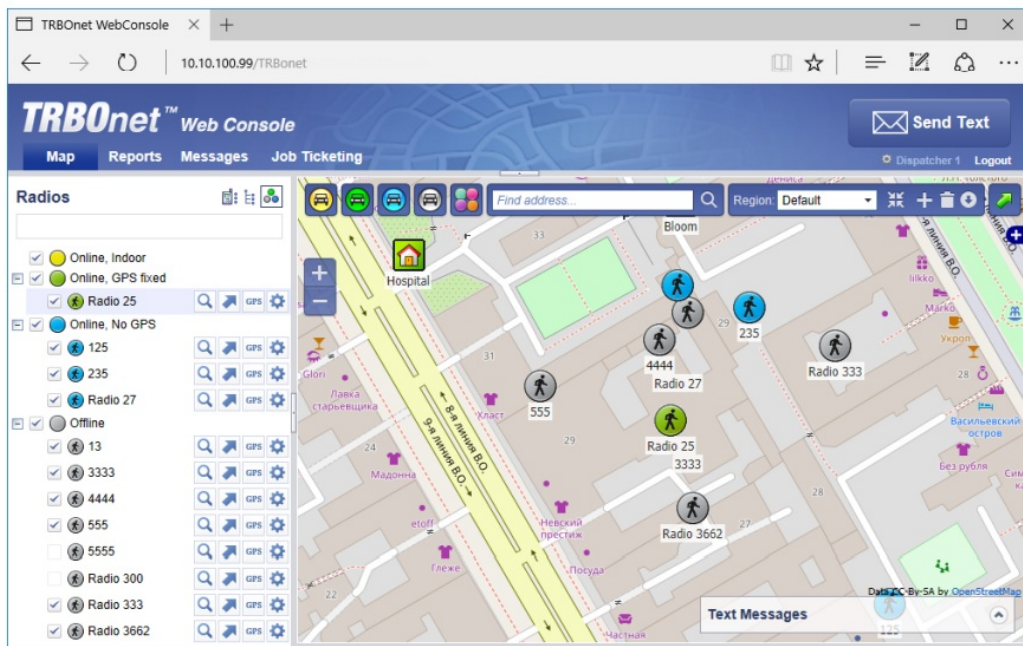
Enter the User Name registered in the TRBOnet Dispatch Console Users list.

- **Password**



Enter the user password.

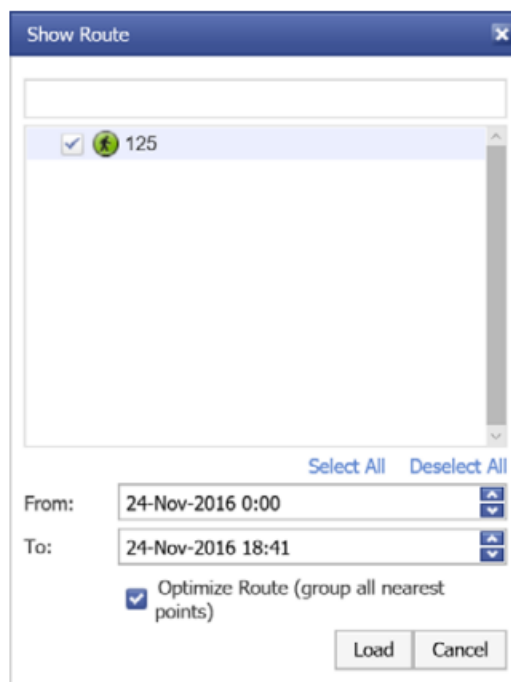
- Click Connect.


Once you have connected to TRBOnet Server, you will see a window like this.



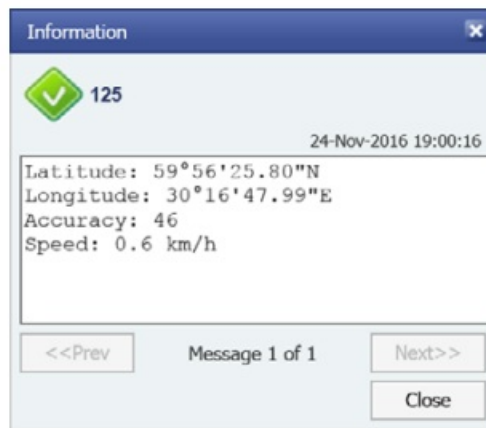
## Radio List


- The Radio List pane is located on the left and contains the list of radios. From this pane, you can perform the following tasks.
- Click the  button to see the selected radio in the center of the map.
- Click the  button to display a route traveled by the selected radio on the map.



- Specify the From and To date and time. Select the Optimize Route option to group all points in a 100 meter radius.
- Click the  button to request a location of the selected radio.





- Click the  button to display the selected radio properties.



### Disabling a radio

To disable a radio:

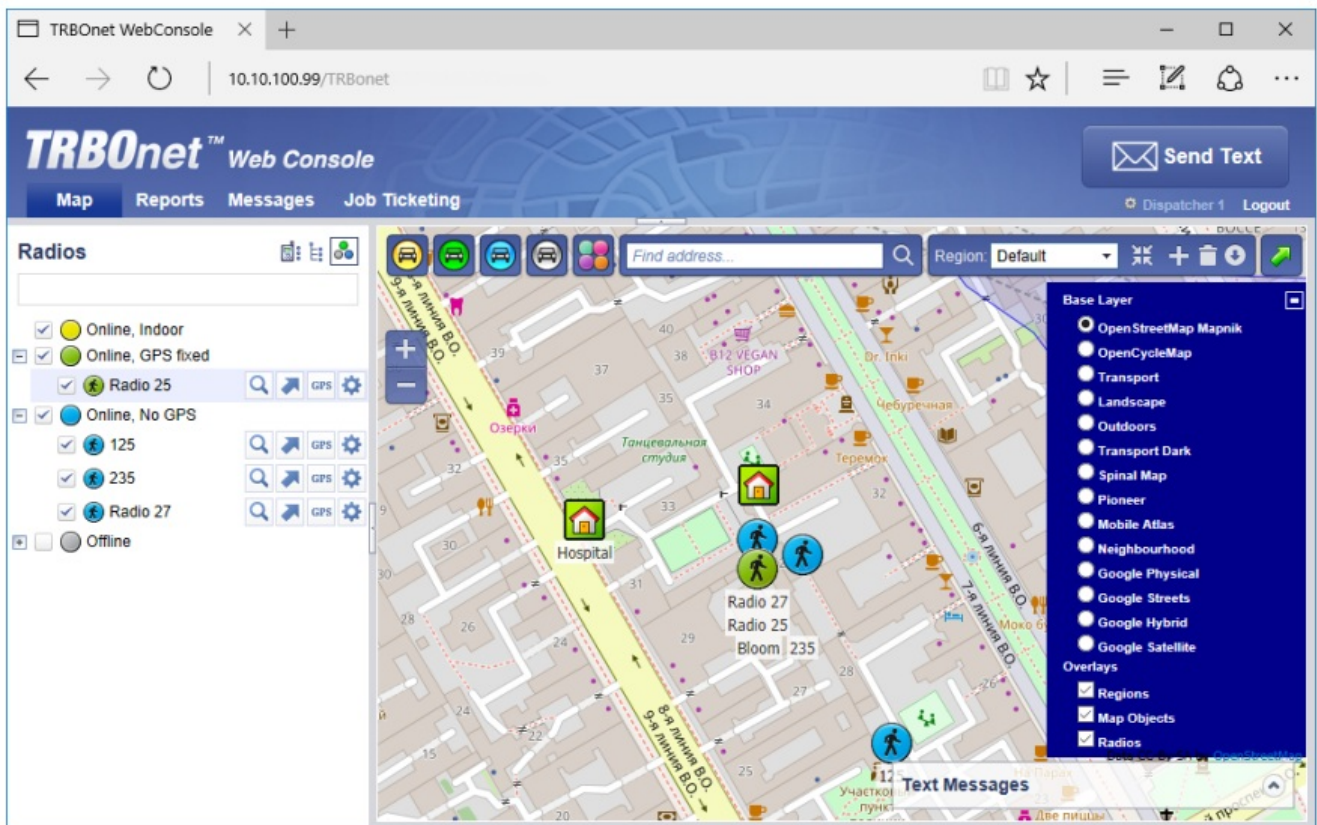
- Right-click the desired radio in the Radio List pane.
- In the shortcut menu that opens, click Disable.
- Enter the Reason and click OK.

**Note:** The dispatcher can disable a radio when they have relevant Access Rights.

### Map

#### Map Layers

- Click the small plus button on the right of the Map pane.
- Choose the map layer to display in the Map pane.
- In the Overlays list, select whether to display Regions, Map Objects and Radios on the map. Just select/deselect the corresponding check box.



## Zoom In/Out

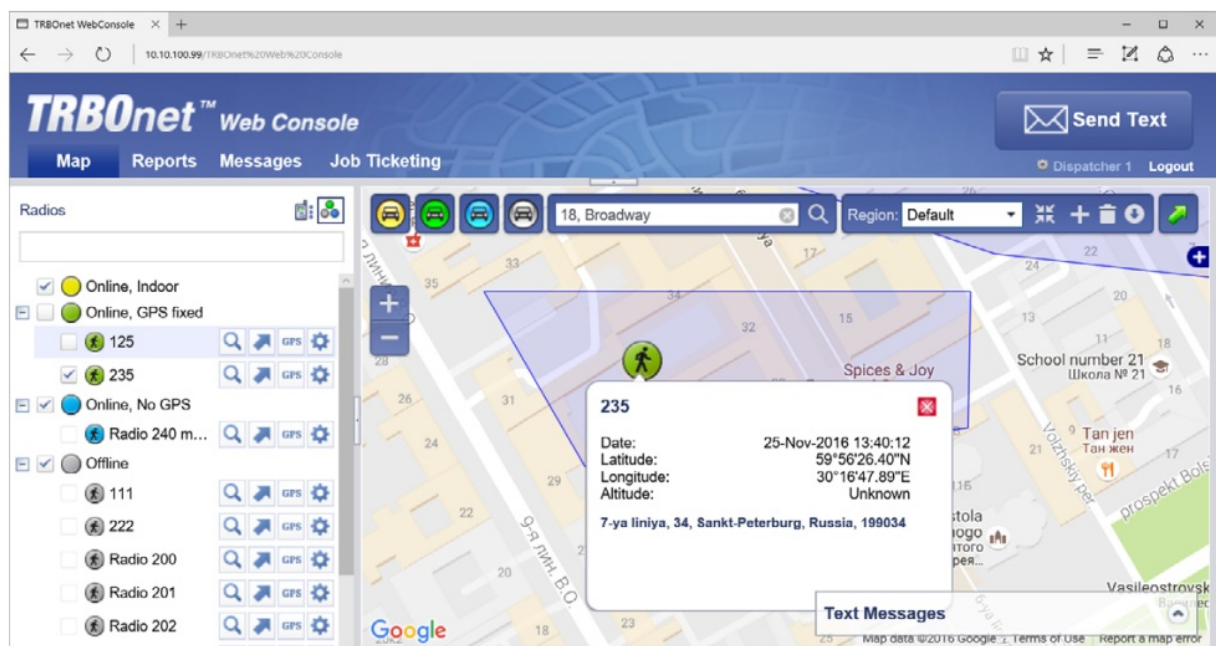
- Click the large plus button on the left of the Map pane to zoom in the map.
- Click the large minus button on the left of the Map pane to zoom out the map.

Or:

- Use the mouse wheel to zoom in/out the map.



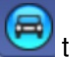


## Radio Coordinates and Address

- In the Map pane, click the radio you want to inspect.
- As a result, a window will appear displaying the coordinates and address of the inspected radio.



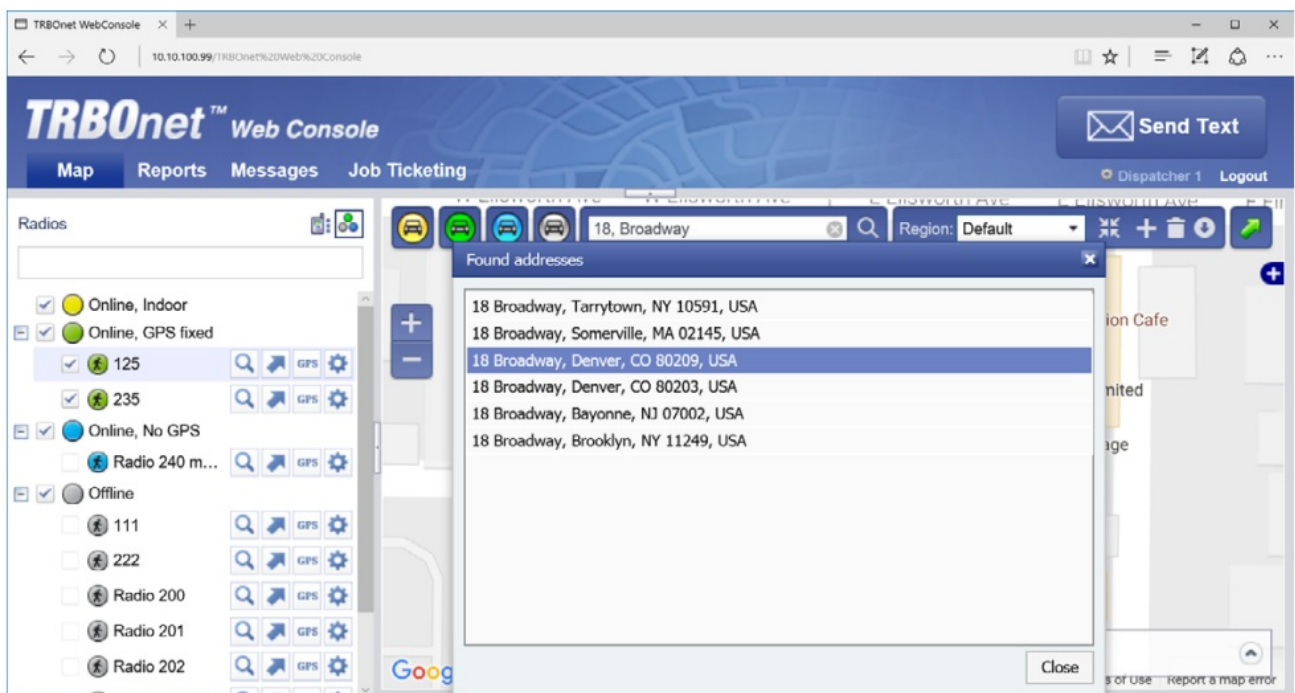
## Filter Radios

You can filter the display of radios on the map. To do this, use the colored car buttons at the top of the Map pane.

- Click  to remove radios that are online and have a detected beacon position from the map view. Click this button again to bring them back to be displayed.
- Click  to remove radios that are online and have a detected GPS position from the map view. Click this button again to bring them back to be displayed.
- Click  to remove radios that are online and have no detected GPS position from the map view. Click this button again to bring them back to be displayed.
- Click  to remove radios that are offline and have no detected GPS position from the map view. Click this button again to bring them back to be displayed.
- Click  and select the visibility of the radios having On Duty and/or Off Duty states.

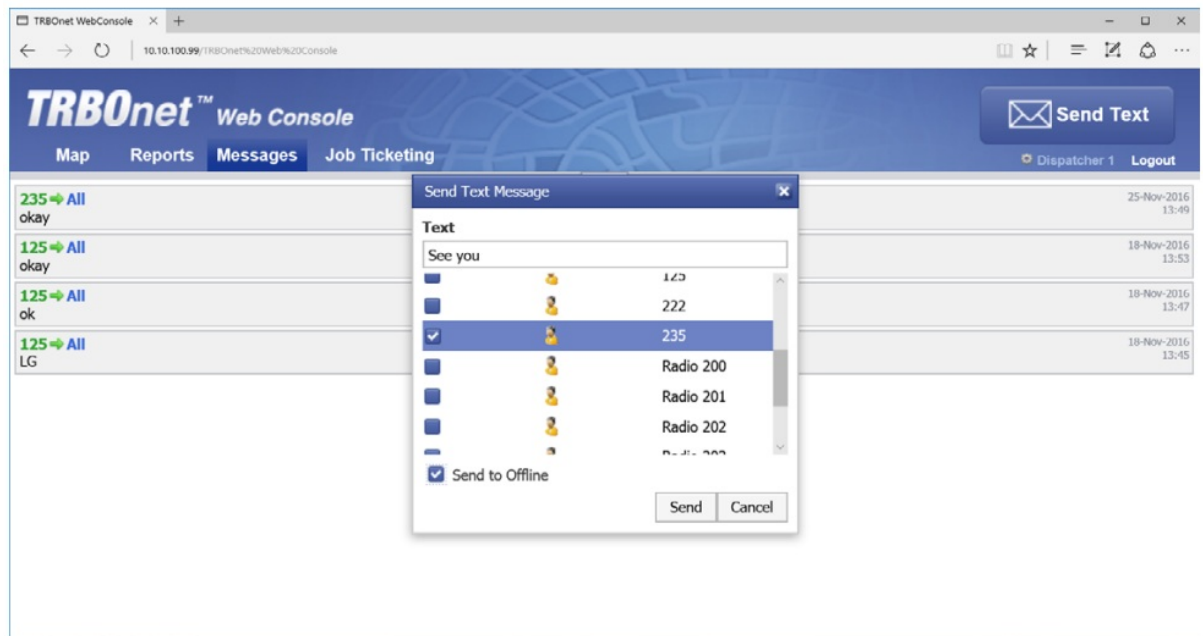
## Search by address

- In the Find Address box, enter the address you want to locate on the map.
- Click the lens button on the right.
- In the Found addresses window, click the address to locate it on the map.



## Text Messages

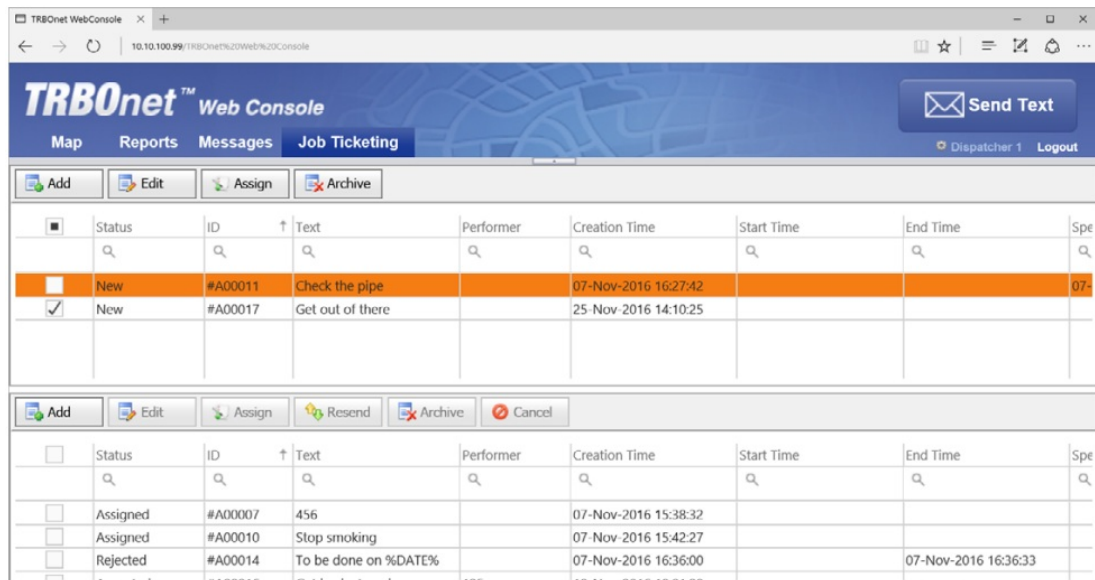
- With TRBOnet Web Console, you can send text messages to radios/radio groups/dispatchers.
  - Click the Messages tab at the top of the window.
  - Click the Send Text button.



- In the Send Text Message window that appears:
  - Enter the text of the message.
  - Select the radios/radio groups/dispatchers to send the message to.
  - Select the Send to Offline option to send the message to offline radios.

## Job Ticketing

- With TRBOnet Web Console, you can create, assign, and track job tickets through the radio network. Click the Job Ticketing tab at the top of the window.



- In the upper pane, you see the list of created job tickets. In the lower pane, there are assigned job tickets.

## Add a Job Ticket

- Click the Add button.

Job Ticket - Microsoft Edge

10.10.100.99/TR8Onet%20Web%20Console/Forms/Add

Ticket ID: #A00000

Text: Check the pipe

☒ Enable Deadline

End Time: 25-Nov-2016 14

Priority: Medium

Comment:

OK Cancel

- **Ticket ID**

This value will be set automatically once the ticket has been created.

- **Text**

Enter the text message in this box.

- **Enable Deadline**

Select this option and in the End Time box, specify a due date and time for the task.

- **Priority**

From the drop-down list, select the task priority level.

- **Comment**

Enter a comment for the ticket.

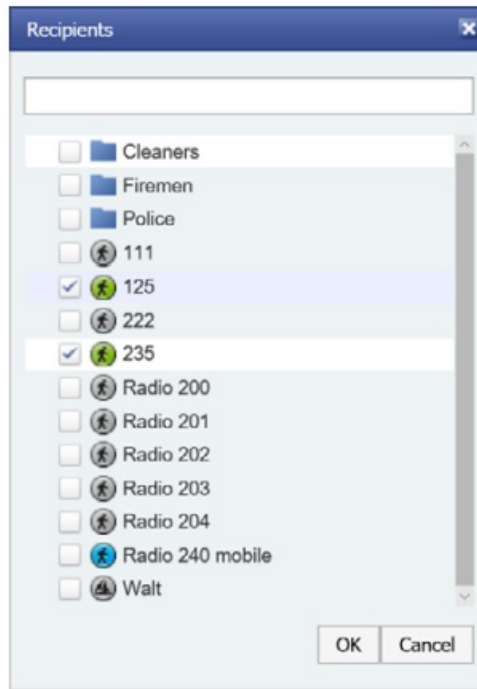
- Click OK.

Once you have added a ticket, it will appear in the list of tickets in the upper pane.

### **Assign a Job Ticket**

Select the job ticket in the upper pane, and click the Assign button.



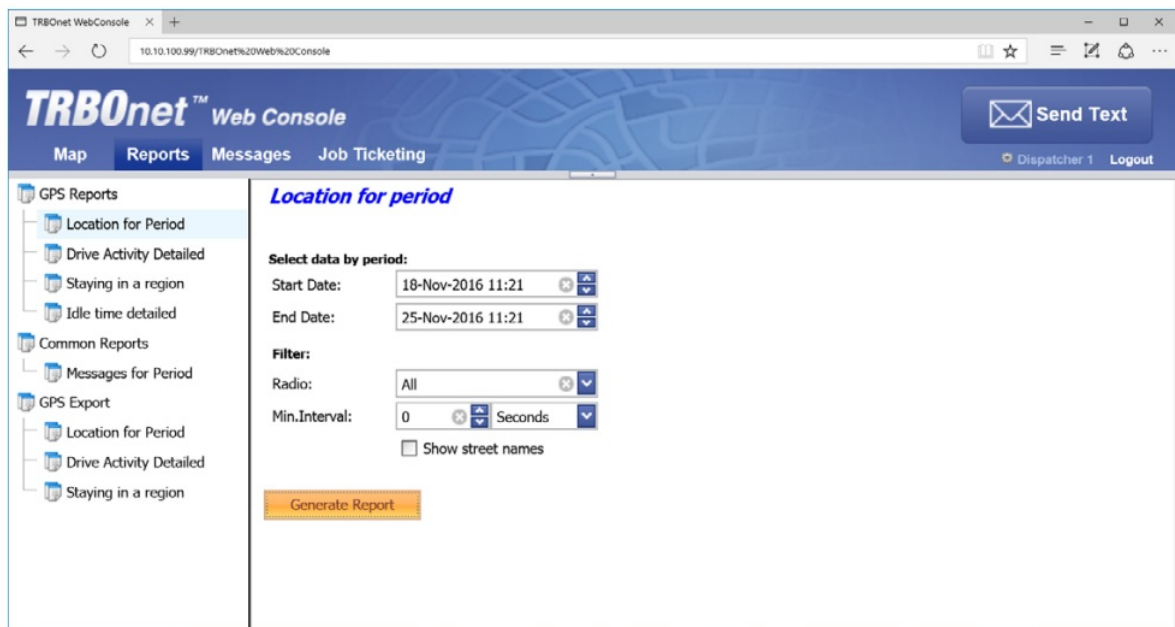


- In the list, select a radio(s), radio or logical group to which to assign the job ticket.
- Click OK to assign the task to selected radio(s).

As a result, the selected radio will receive the job ticket. The assigned job ticket will appear in the upper pane.

## Reports

- Click the Reports tab at the top of the window.



- In the right pane, select report parameters and click Generate Report.
- Once the report is generated, you will see it in a separate tab of your Web browser.



TRBOnet WebConsole Location for period

10.10.100.99:TRBOnet%20Web%20Console/Reports/GPSbyFilter/GPSbyFilterResult.aspx?radio=0&minInterval=0&showStreetNames=false&unit=1&startDate=18/11/2016+11:21&endDate=18/11/2016+11:21

Page 1 of 337 Pdf

### Location for period

from 18-Nov-2016 11:21 to 25-Nov-2016 11:21

**Radio: 125 (Cleaning 1)**

Date	Coordinates	Altitude (meter)	Accuracy (meter)	Speed	Direction	Open
18-Nov-2016 11:21:29	Latitude: 59°56'25.95"N Longitude: 30°16'47.96"E	Unknown	37	0.0	0	<a href="#">on map</a>
18-Nov-2016 11:22:29	Latitude: 59°56'25.96"N Longitude: 30°16'47.91"E	Unknown	35	0.0	0	<a href="#">on map</a>
18-Nov-2016 11:22:59	Latitude: 59°56'25.96"N Longitude: 30°16'47.90"E	Unknown	46	0.2	0	<a href="#">on map</a>
18-Nov-2016 11:23:29	Latitude: 59°56'25.96"N Longitude: 30°16'47.89"E	Unknown	37	0.2	0	<a href="#">on map</a>
18-Nov-2016 11:23:59	Latitude: 59°56'25.96"N Longitude: 30°16'47.89"E	Unknown	37	0.2	0	<a href="#">on map</a>
18-Nov-2016 11:24:29	Latitude: 59°56'25.96"N Longitude: 30°16'47.89"E	Unknown	37	0.2	0	<a href="#">on map</a>
18-Nov-2016 11:25:01	Latitude: 59°56'25.96"N Longitude: 30°16'47.89"E	Unknown	37	0.2	0	<a href="#">on map</a>
18-Nov-2016 11:25:29	Latitude: 59°56'25.96"N Longitude: 30°16'47.89"E	Unknown	37	0.2	0	<a href="#">on map</a>
18-Nov-2016	Latitude: 59°56'26.23"N	...	...	...	...	...

- You can print the report, save it as a file, and so forth.

## Alarms

When an alarm is received from a radio, the radio icon will turn red, and a corresponding Information window will pop up displaying the radio's name, coordinates, and speed.

TRBOnet™ Web Console

Map Reports Messages Job Ticketing

Radios

Find address... Region: Default

Online, Indoor  
Online, GPS fixed  
Online, No GPS  
Cap Max 230  
Offline

app  
Cap Max 135  
Radio 1  
Radio 2  
Radio 4002  
Radio 4010  
Radio 888

Information

Cap Max 230

3/3/2021, 7:12:15 PM

Emergency Call

GPS Date: 3/1/2021, 10:12:16 AM  
Latitude: 59°56'25.07" N  
Longitude: 30°16'45.76" E  
Speed: 0.0 km/h

<<Prev Message 1 of 1 Next>>  
Close


## ABOUT COMPANY

- USA Office**
  - Neocom Software
  - 150 South Pine Island Rd., Suite 300
  - Plantation, FL 33324, USA
- Sales**
  - EMEA:** +44 203 608 0598
  - Americas:** +1 872 222 8726



- **APAC:** +61 28 607 8325

- [www.trbonet.com](http://www.trbonet.com)
  - [info@trbonet.com](mailto:info@trbonet.com)
- 

## Documents / Resources

	<a href="#">TRBONET Web Console Software</a> [pdf] User Guide Version 6.2, Web Console Software, Console Software, Software
---	--

## References

-  [Your request has been blocked. This could be due to several reasons.](#)
-  [TRBONet - Radio Dispatch Solutions](#)
- [User Manual](#)

### Manuals, Privacy Policy

This website is an independent publication and is neither affiliated with nor endorsed by any of the trademark owners. The "Bluetooth®" word mark and logos are registered trademarks owned by Bluetooth SIG, Inc. The "Wi-Fi®" word mark and logos are registered trademarks owned by the Wi-Fi Alliance. Any use of these marks on this website does not imply any affiliation with or endorsement.