



Traynor YSC-Mobile Battery Powered Loudspeaker System User Guide

[Home](#) » [Traynor](#) » Traynor YSC-Mobile Battery Powered Loudspeaker System User Guide 

Traynor

YSC-Mobile
BATTERY POWERED LOU DSPEAKER SYSTEM



Contents

- 1 **IMPORTANT SAFETY INSTRUCTIONS**
- 2 Introduction
- 3 System Configurations
- 4 Specifications
- 5 Documents / Resources
 - 5.1 References

IMPORTANT SAFETY INSTRUCTIONS



This lightning flash with arrowhead symbol, within an equilateral triangle, is intended to alert the user to the presence of uninsulated “dangerous voltage” within the product’s enclosure that may be of sufficient magnitude to constitute a risk of electric shock to persons.



The DO NOT STACK symbol is intended to alert the user that the product shall not be vertically stacked because of the nature of the product.



SEPARATE

CAUTION
RISK OF ELECTRIC SHOCK
DO NOT OPEN



DO NOT



IEC 60417-5041

CAUTION: HOT SURFACE



NOT TO BE SERVICED



The exclamation point within an equilateral triangle is intended to alert the user to the presence of important operating and maintenance (servicing) instructions in the literature accompanying the appliance.



CAUTION: OVERHEAD LOAD

FOLLOW ALL INSTRUCTIONS

Instructions pertaining to a risk of fire, electric shock, or injury to a person

CAUTION: TO REDUCE THE RISK OF ELECTRIC SHOCK, DO NOT REMOVE COVER (OR BACK).

NO USER SERVICEABLE PARTS INSIDE. REFER SERVICING TO QUALIFIED SERVICE PERSONNEL. THIS DEVICE IS FOR INDOOR USE ONLY!

INSTALLED BATTERY PACKS SHALL NOT BE EXPOSED TO EXCESSIVE HEAT SUCH AS SUNSHINE, FIRE OR THE LIKE.

Read Instructions: The Owner’s Manual should be read and understood before operation of your unit. Please, save these instructions for future reference and heed all warnings.

Cleaning: Clean only with dry cloth.

Packaging: Keep the box and packaging materials, in case the unit needs to be returned for service.

Warning: To reduce the risk of fire or electric shock, do not expose this apparatus to rain or moisture. Do not use this apparatus near water!

Warning: When using electric products, basic precautions should always be followed, including the following:

Power Sources

Your unit should be connected to a power source only of the voltage specified in the owners manual or as marked on the unit. This unit has a polarized plug. Do not use with an extension cord or receptacle unless the plug can be fully inserted. Precautions should be taken so that the grounding scheme on the unit is not defeated. An apparatus with CLASS I construction shall be connected to a Mains socket outlet with a protective earthing connection.

Where the MAINS plug or an appliance coupler is used as the disconnect device, the disconnect device shall remain readily operable.

Hazards

Do not place this product on an unstable cart, stand, tripod, bracket or table. The product may fall, causing serious personal injury and serious damage to the product. Use only with cart, stand, tripod, bracket, or table recommended by the manufacturer or sold with the product. Follow the manufacturer's instructions when installing the product and use mounting accessories recommended by the manufacturer. Only use attachments/accessories specified by the manufacturer.

Equipment that is suspended overhead must use a secondary safeguard to prevent personal injury in the event the primary mounting mechanism fails. Safety eyebolts attached to the equipment and galvanized steel wire can be used together to implement a failsafe mounting thus ensuring the safety of the equipment and anyone positioned below the equipment.

Improper installation can result in bodily injury or death. If you are not qualified to attempt the installation get help from a professional structural rigger.

Note: Prolonged use of headphones at a high volume may cause health damage to your ears.

The apparatus should not be exposed to dripping or splashing water; no objects filled with liquids should be placed on the apparatus.

Terminals marked with the "lightning bolt" are hazardous live; the external wiring connected to these terminals require installation by an instructed person or the use of ready made leads or cords.

Ensure that proper ventilation is provided around the appliance. Do not install near any heat sources such as radiators, heat registers, stoves, or other apparatus (including amplifiers) that produce heat.

No naked flame sources, such as lighted candles, should be placed on the apparatus.

Power Cord

Do not defeat the safety purpose of the polarized or grounding-type plug. A polarized plug has two blades with one wider than the other. A grounding type plug has two blades and a third grounding prong. The wide blade or the third prong are provided for your safety. If the provided plug does not fit into your outlet, consult an electrician for replacement of the obsolete outlet. The AC supply cord should be routed so that it is unlikely that it will be damaged. Protect the power cord from being walked on or pinched particularly at plugs. If the AC supply cord is damaged DO NOT OPERATE THE UNIT. To completely disconnect this apparatus from the AC Mains, disconnect the power supply cord plug from the AC receptacle. The mains plug of the power supply cord shall remain readily operable.

Unplug this apparatus during lightning storms or when unused for long periods of time.

Service

The unit should be serviced only by qualified service personnel. Servicing is required when the apparatus has been damaged in any way, such as power-supply cord or plug is damaged, liquid has been spilled or objects have fallen into the apparatus, the apparatus has been exposed to rain or moisture, does not operate normally, requires battery pack replacement or has been dropped.

Disconnect power before servicing!



The Lightning Flash with arrowhead symbol within an equilateral triangle, is intended to alert the user to the presence of uninsulated "dangerous voltage" within the product enclosure that may be of sufficient magnitude to constitute a risk of shock to persons



The exclamation point within an equilateral triangle is intended to alert the user to the presence of important operating and maintenance (servicing) instructions in the literature accompanying the product

1. Read these instructions.
2. Keep these instructions.
3. Heed all warnings.
4. Follow all instructions.
5. Do not use this apparatus near water.
6. Clean only with dry cloth.
7. Do not block any ventilation openings. Install in accordance with the manufacturer's instructions.

8. Do not install near any heat sources such as radiators, heat registers, stoves, or other apparatus (including amplifiers) that produce heat.
9. Do not defeat the safety purpose of the polarized or grounding-type plug. A polarized plug has two blades with one wider than the other. A grounding type plug has two blades and a third grounding prong. The wide blade or the third prongs are provided for your safety. If the provided plug does not fit into your outlet, consult an electrician for replacement of the obsolete outlet.
10. Protect the power cord from being walked on or pinched particularly at plugs, convenience receptacles, and the point where they exit from the apparatus.
11. Only use attachments/accessories specified by the manufacturer.
12. Use only with the cart, stand, tripod, bracket, or table specified by the manufacturer, or sold with the apparatus. When a cart is used, use caution when moving the cart/apparatus combination to avoid injury from tip-over.
13. Unplug this apparatus during lightning storms or when unused for long periods of time.
14. Refer all servicing to qualified service personnel. Servicing is required when the apparatus has been damaged in any way, such as power-supply cord or plug is damaged, liquid has been spilled or objects have fallen into the apparatus, the apparatus has been exposed to rain or moisture, does not operate normally, or has been dropped.

WARNING:

- To reduce the risk of fire or electric shock, do not expose this apparatus to rain or moisture and objects filled with liquids, such as vases, should not be placed on this apparatus.
- To completely disconnect this apparatus from the ac mains, disconnect the power supply cord plug from the ac receptacle.
- The mains plug of the power supply cord or appliance coupler shall remain readily accessible.



TO PREVENT ELECTRIC SHOCK HAZARD, DO NOT CONNECT TO MAINS POWER SUPPLY WHILE GRILLE IS REMOVED.

This equipment has been tested and found to comply with the limits for a Class B digital device, pursuant to part 15 of the FCC Rules. These limits are designed to provide reasonable protection against harmful interference in a residential installation. This equipment generates, uses and can radiate radio frequency energy, and if not installed and used in accordance with the instructions, may cause harmful interference to radio communications. However, there is no guarantee that interference will not occur in a particular installation. If this equipment does cause harmful interference to radio or television reception, which can be determined by turning the equipment off and on, the user is encouraged to try to correct the interference by one or more of the following measures:

- Reorient or relocate the receiving antenna.
- Increase the separation between the equipment and receiver.
- Connect the equipment into an outlet on a circuit different from that to which the receiver is connected.
- Consult the dealer or an experienced radio/TV technician for help.

CAUTION: Changes or modifications not expressly approved by the party responsible for compliance could void the user's authority to operate the equipment.



For Position Only!

Introduction

Congratulations on your purchase of the 60th Anniversary Traynor YSC-Mobile. This special run, compact mini column PA enclosure has been created to help celebrate Yorkville Sound and Traynor's 60th Anniversary. The YSC-Mobile commemorates Yorkville Sound's very first product, a column PA enclosure. This unique column PA enclosure predates the venerable YBA-1 bass amplifier. It's initial success, after being showcased in 1963 Toronto, Canada had direct influence of the birth of Yorkville Sound. The success of the column PA led to the company designing many different professional products for the gigging musician. A Canadian legend was born. Before the spring of 1963, portable PA was an unknown concept in most of North America. As a vocalist, there was a mic and cable and a hope that there would be something to plug it into at the gig (there often wasn't). The YSC-1 PA column was created to assist when a band actually requested a portable PA system. By creating the YSC-1, Pete Traynor made a major step in the evolution of live music technology which resulted in the birth of Yorkville Sound some months later.

Some features of the Traynor YSC-Mobile include:

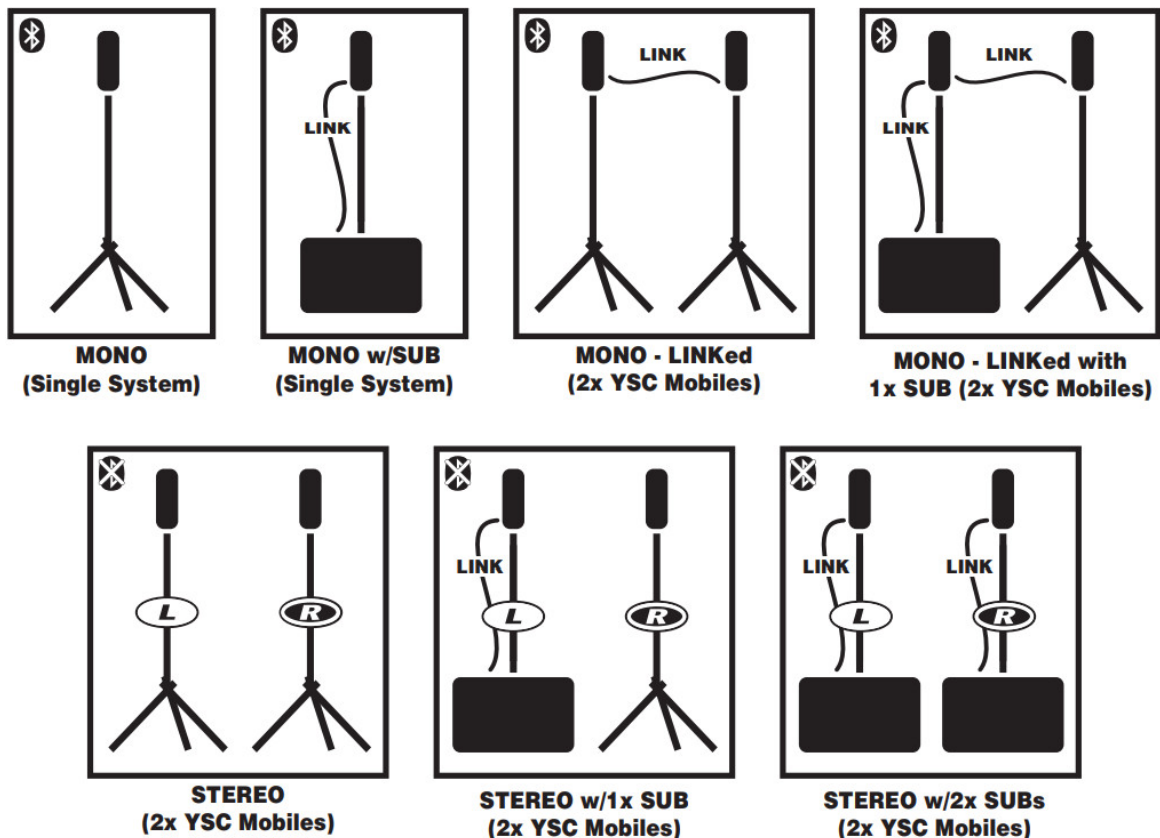
- Compact, powered PA enclosure with a built in 3 channel mixer, including effects
- Battery life of 5.5 hours when playing at full volume; well in excess of 24 hours of life for light-duty applications
- 3 Mic inputs (XLR, all channels), Balanced line input (1/4-inch Ch1), Instrument input (Unbal 1/4-inch Ch2), Aux Input (1/8-inch Ch3)
- Bluetooth™ connection for streaming audio to the system (via Channel 3)
- Scalable, the design allows the system to grow to meet different needs
- Easily paired with a compact Subwoofer to extend the bass
- Link input/output for connecting two or more YSC-Mobile systems together
- Effects including Reverb and delay
- 15mm birch cabinet material
- Classic Traynor leatherette covering
- Wood framed grill with classic Traynor grill cloth
- Vintage Traynor Script Logo

This manual explains the various features and functions of the YSC-Mobile. For general information about mixing and other facets of sound-reinforcement check out our P.A. User Guides available on our website

(<http://www.yorkville.com>)

System Configurations

The scalable nature of the YSC-Mobile allows for several configurations that can be utilized to suit your needs. Here are some examples:



Channel Inputs



1. Channel 1

Channel 1 is equipped with a combi-jack optimized for a microphone (XLR) or a balanced line level (1/4-inch) source. A level control sets the gain and relative volume while the clip LED indicates the onset of clipping distortion. For powering condenser microphones, 24V of phantom power is present on the XLR input portion of the jack.

2. Channel 2

Channel 2 is equipped with a combi-jack optimized for a microphone (XLR) or an instrument level source (1/4-inch) source. A level control sets the gain and relative volume while the clip LED indicates the onset of clipping distortion. For powering condenser microphones, 24V of phantom power is present on the XLR input portion of the jack.

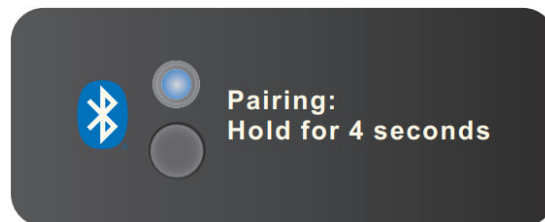
3. Channel 3

Channel 3 is equipped with an XLR jack optimized for a microphone (XLR), an unbalanced TRS 1/8-inch phone jack optimized for portable media players and Bluetooth™. A level control sets the gain and relative volume while the clip LED indicates the onset of clipping distortion. For powering condenser microphones, 24V of phantom power is present on the XLR input portion of the jack.

Note: When Bluetooth™ is used the volume is controlled by Channel 3's Level control.

Bluetooth™

The YSC-Mobile is capable of receiving streaming audio over Bluetooth™ from devices such as smart phones, tablets and laptops. Pairing your device with the YSC-Mobile is simple and gives you the freedom to play your music **wirelessly**.



Pairing: When the Pairing Button is depressed for 4 seconds and then released, the Bluetooth™ audio connection is available for pairing.

Status: The blue status indicator alerts the user to the current status of the Bluetooth™ connection. A fast blinking light indicates an available, unpaired connection. A slow blinking blue light is pairing mode waiting to pair, and a steady (solid) blue light is paired and audio is available to Channel 3.

Level Control: The Channel 3 Level control is used to set the audio level for the Bluetooth™ connection. Level may also be controlled directly at your streaming device.

The YSC-Mobile's Bluetooth™ operating range is rated for 10 meters (33 feet) line of sight. The quality of the link can be affected by an excess of traffic in the 2.4 GHz bandwidth or structures between the YSC-Mobile and the streaming device.

Note: When connected with Bluetooth™, ALL audio is streamed from your device. If you don't want your streaming music to be interrupted, turn off 'notifications' on your device.

Channel Controls

1. Level Control

The YSC-Mobile features active channel input circuitry with exceptionally high audio headroom. The Level control adjusts the channel gain over an 85 dB range. Use this control to adjust the channel's level in the overall system mix.

2. Shape Control

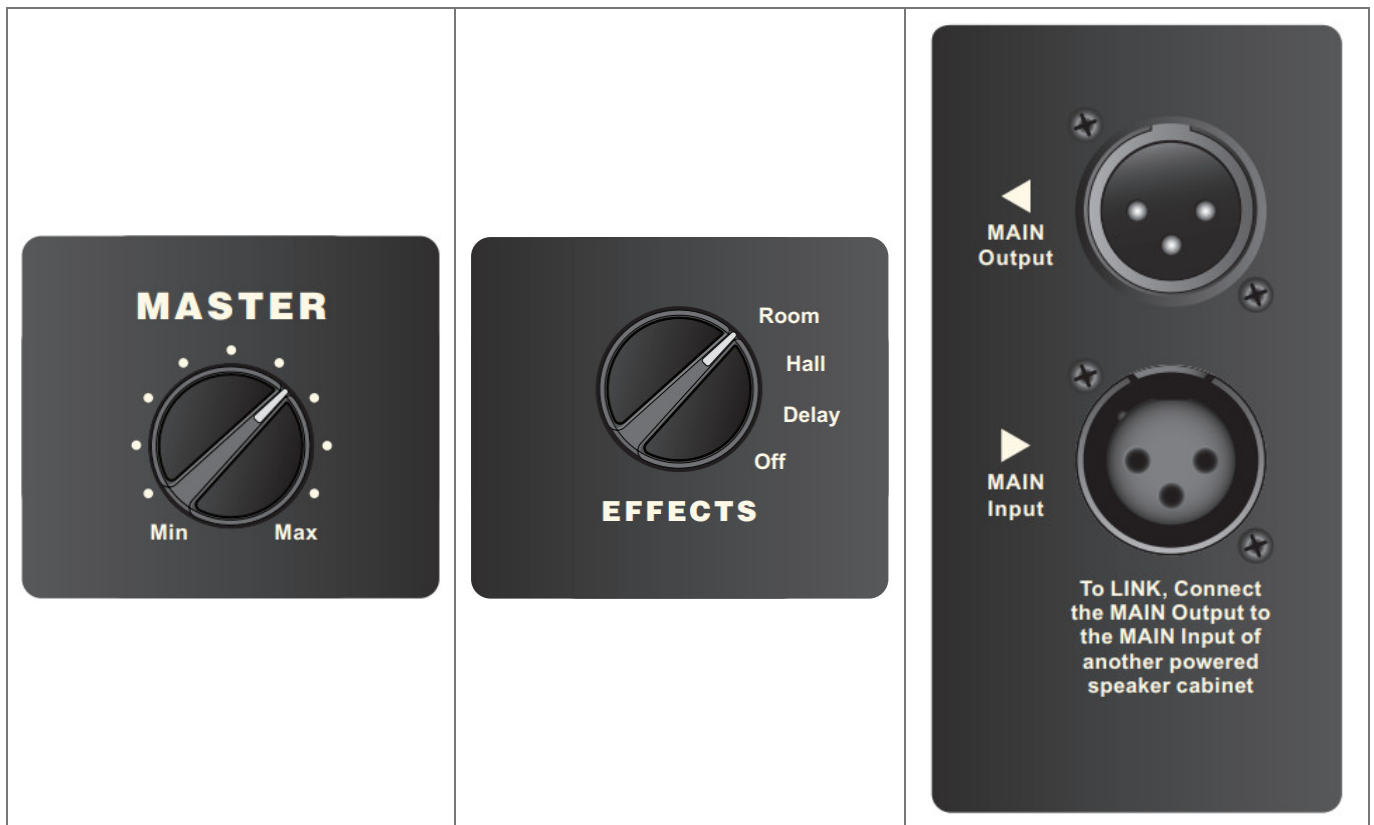
Setting this control towards 'Music' shapes the response to be suited for reproducing prerecorded music while setting the control towards 'Speech' accentuates the midfrequencies which help speech and vocals.

The response is flat in the center position.

3. Effects Control

This control determines how much of the selected effect (see "Effect Selector" in the "Master Section" portion of this manual) is applied to the corresponding channel.

Master Section



1. Master Control

The Master Control is used to set the overall level of the YSC-Mobile.

Note: When two systems are linked together, the Master Control only affects the level of the unit on which it is located.

2. Effects Selector

Three effects are available with this control, as well as an off (no-effects) position. The effects are Delay, Hall Reverb and Room Reverb. The selected effect is available to all 3 input channels and the amount of effect applied is controlled by the individual channel's effects knob.

Note: If effects are not in use, set this switch to the off position to help conserve battery life.

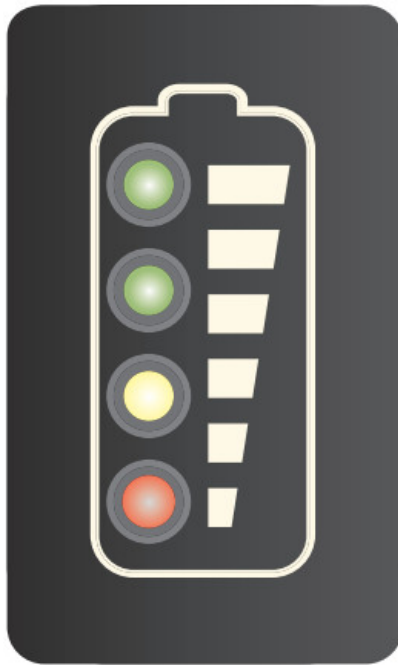
Link Section

In situations where additional bass or input channels are needed, The Link jacks can be used to connect multiple YSC-Mobile systems and/or a subwoofer.

1. Link Jacks

The Link jacks are in parallel and we have provided both a male and female XLR to help make it more convenient to 'link' YSC-Mobile enclosures together. To use the Link feature, insert a standard XLR patch cable between cabinets.

Battery



1. Status Indicators

The back of the YSC-Mobile has a series of four LEDs (green, green, yellow, and red) to indicate the approximate charge level. The upper green LED is illuminated if there is greater than 85% charge in the battery. The red LED only will indicate that the battery is critically low (approximately 10% remaining) and needs immediate charging. The indicators will be engaged only when the power switch is turned on.

2. Low-Power “Sleep” State

The YSC-Mobile features a special “sleep” mode which reduces energy consumption when the system is not in use and this also preserves battery life. This mode is automatic and nearly undetectable to users when the YSC-Mobile is configured properly. To ensure the sleep state doesn’t interfere with normal operation, the output level should be controlled with the Master control, especially where quiet playback is desired.

3. Charging Indicator

Whenever AC is connected to the unit, the charging indicator will be turned on. If it is green, the unit is fully charged. If it is red, the unit is in the process of charging.

4. Charging the YSC-Mobile

To charge the YSC-Mobile, plug it into an AC power source using the included power cord. The charging indicator LED is the best indication of the charging status; even if all of the battery status LEDs are lit, there is still possibly some additional charging time required. The YSC-Mobile can be safely left connected to AC power for charging indefinitely. It will intelligently control its own charging regime when plugged in long-term.

The YSC-Mobile will not charge when the temperature is below 0° C or above 45° C.

If the YSC-Mobile is going to be stored unused for a long period of time (greater than 6 months) it is advisable to periodically plug it in to charge up the battery.

If the YSC-Mobile has been stored for a long period of time unused and it has not been maintained, it is advisable to connect the charger and leave it plugged in for approximately 24 hours.



The YSC Mobile is delivered with 40-50% of the charge capacity. Please charge your unit for 5-hours prior to initial battery operation!

THIS UNIT CAN BE OPERATED WHILE CHARGING!

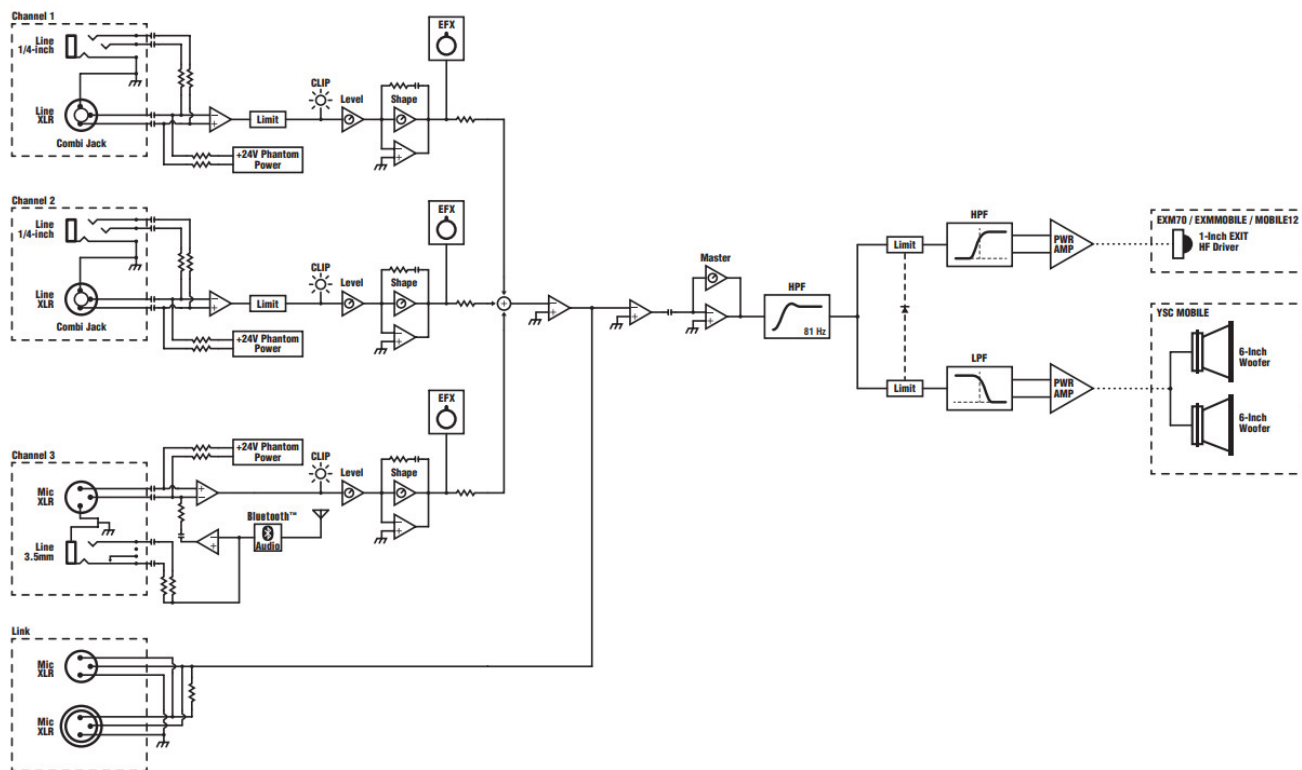
Specifications

YSC Mobile

Program Power (watts)	60 watts
Max SPL (dB)	115
Frequency Response (Hz +/- 3db)	70-20k
Speaker Configuration – LF	2 x 6.5-inch
Speaker Configuration – HF	1-inch Soft Dome
Inputs	3
Channel 1 Input	XLR / ¼-inch Combi-jack
Channel 1 Controls	Level, Shape, Effects Send
Channel 2 Input	XLR / ¼-inch Combi-jack
Channel 2 Controls	Level, Shape, Effects Send
Channel 3 Input	XLR Mic & 1/8-inch TRS Stereo Jack, Bluetooth™
Channel 3 Controls	Level, Shape, Effects Send, Bluetooth™
Master Volume Control	Yes
Link In/Out (type / configuration)	XLR Connector (Male and Female)
LED Indicators	Power, Clip (CH1, CH2, CH3), Bluetooth, 4x Battery Level, Charging Status
Other Features	Digital Effects (Hall Reverb, Room Reverb and Delay)
Power Consumption while charging (watts)	32 (battery fully discharged and unit idle)
Dimensions (DWH inches)	9 x 9 x 20
Dimensions (DWH, cm)	23 x 23 x 51
Weight (lbs/kg)	22.9 / 10.4

Block Diagram - YSC-MOBILE

DESIGNED & MANUFACTURED BY YORKVILLE SOUND



Two Year Warranty

Unlimited Warranty

Your Traynor two year unlimited warranty on this product is transferable and does not require registration with Yorkville Sound or your dealer. If this product should fail for any reason within two years of the original purchase date, simply return it to your Traynor dealer with original proof of purchase and it will be repaired free of charge. Freight charges, consequential damages, weather damage, damage as a result of improper installation, damages due to exposure to extreme humidity, accident or natural disaster are excluded under the terms of this warranty. Warranty does not cover consumables such as vacuum tubes, bulbs or batteries beyond 90 days of original purchase. See your Yorkville dealer for more details. Warranty valid only in Canada and the United States.

REAL Gear.
REAL People.



Canada

Voice: 905-837-8481
Fax: 905-839-5776

U.S.A.

Voice: 716-297-2920
Fax: 716-297-3689

www.yorkville.com

Yorkville Sound

550 Granite Court
Pickering, Ontario
L1W-3Y8 CANADA

Yorkville Sound Inc.

4625 Witmer Industrial Estate
Niagara Falls, New York
14305 USA



WEB: www.yorkville.com



Quality and Innovation Since 1963

Printed in Canada

Manual-Owners-YSC-MOBILE-00-1v0 • May 17. 2023

REAR-PAGE-00-5v1

Documents / Resources

	<p>Traynor YSC-Mobile Battery Powered Loudspeaker System [pdf] User Guide YSC-Mobile, YSC-Mobile Battery Powered Loudspeaker System, Battery Powered Loudspeaker System, Loudspeaker System</p>
	<p>Traynor YSC-Mobile Battery Powered Loudspeaker System [pdf] Owner's Manual YSC-Mobile Battery Powered Loudspeaker System, YSC-Mobile, Battery Powered Loudspeaker System, Powered Loudspeaker System, Loudspeaker System</p>

References

-  [Yorkville](http://www.yorkville.com)