

TRAXON Allegro Dot XS RGBW Light



TRAXON Allegro Dot XS RGBW Light User Guide

[Home](#) » [traxon](#) » TRAXON Allegro Dot XS RGBW Light User Guide 

Contents

- 1 TRAXON Allegro Dot XS RGBW Light
- 2 Product Information
- 3 Product Usage Instructions
- 4 AL Dot XS Clear Dimension
- 5 Mounting-STAINLESS STEEL MESH GRID
- 6 Allegro Dot XS Mounting Guide
- 7 Mounting-WIRE MOUNTING
- 8 Mounting-DOT CLIP
- 9 Documents / Resources
 - 9.1 References
- 10 Related Posts



TRAXON

TRAXON Allegro Dot XS RGBW Light



Product Information

Specifications

- **Dimension:** 53.00mm x 13.00mm
- **Weight:** Varies based on mesh grid specifications
- **Material:** Stainless Steel Mesh Grid

Product Usage Instructions

Mounting Guide for AL Dot XS Mesh Grid

1. Ensure the mesh grid is fully stretched before measuring the pitch.
2. Use the provided Mounting Bracket designed for the specified Ferrule dimension.
3. Refer to the installation guide for detailed Mesh Grid installation planning.
4. Tighten the screw with a torque of 0.22Nm when using the Dot Clip.

Wire Mounting Instructions for AL Dot XS

1. Run horizontal and vertical cables through the designated slots.
2. Ensure the wires fit securely into the slot between the back and front bracket.
3. Make sure all 4 locks are snapped tightly during installation.

FAQ

- **What is the recommended torque for tightening screws with the Dot Clip?**

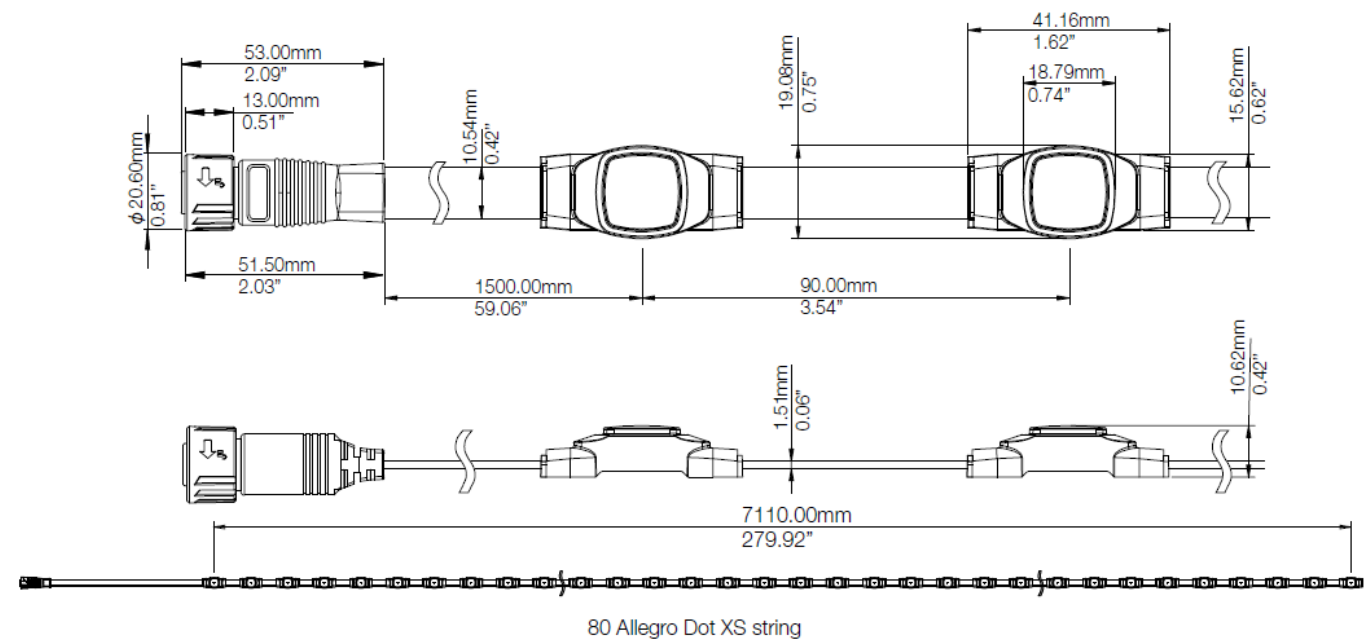
The recommended torque for tightening screws with the Dot Clip is 0.22Nm.

- **How should I ensure proper wire mounting with the AL Dot XS Wire Mounting Bracket Set?**

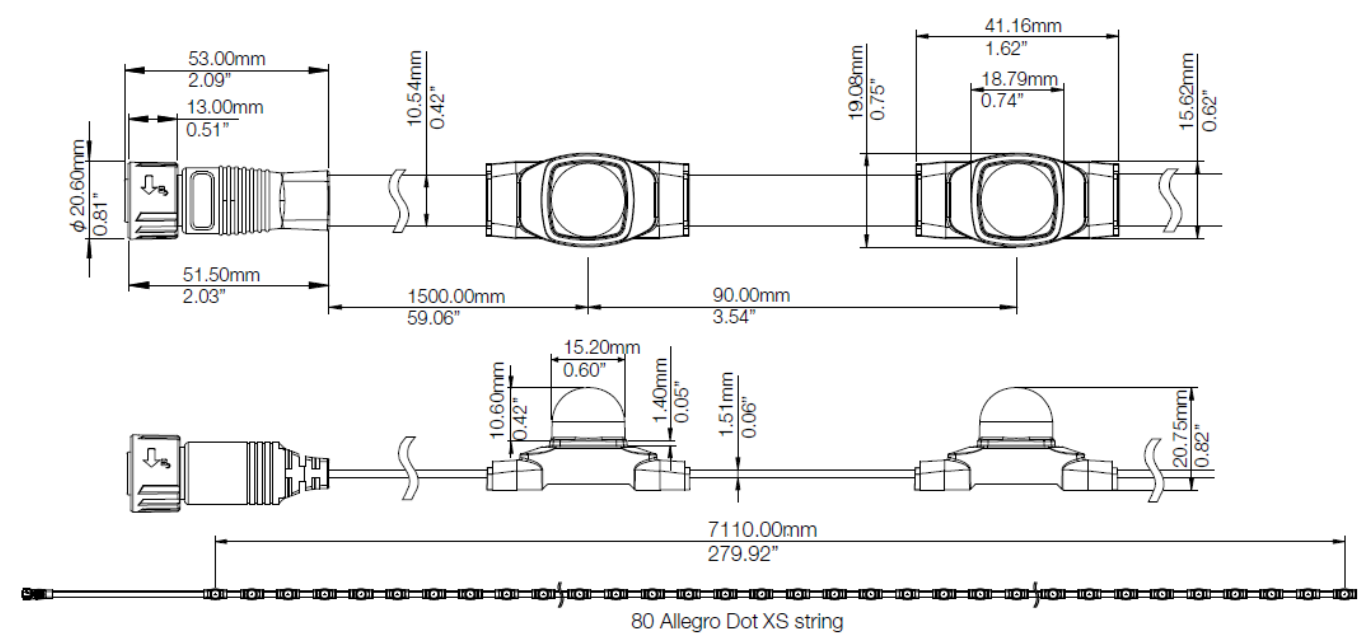
To ensure proper wire mounting, make sure the wires fit securely into the slot between the back and front

bracket and ensure all 4 locks are snapped tightly during installation.

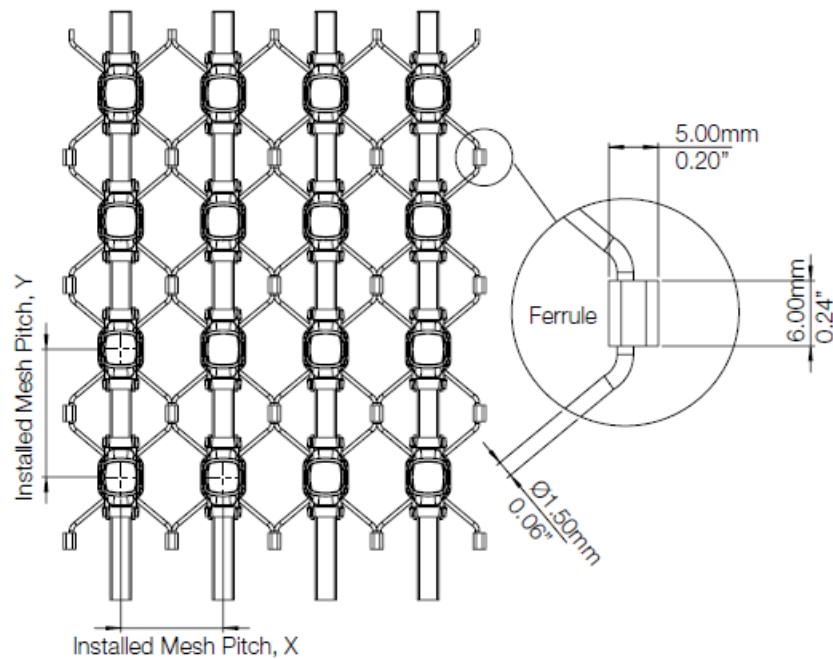
AL Dot XS Clear Dimension



AL Dot XS Diffused Dimension



Mounting-STAINLESS STEEL MESH GRID



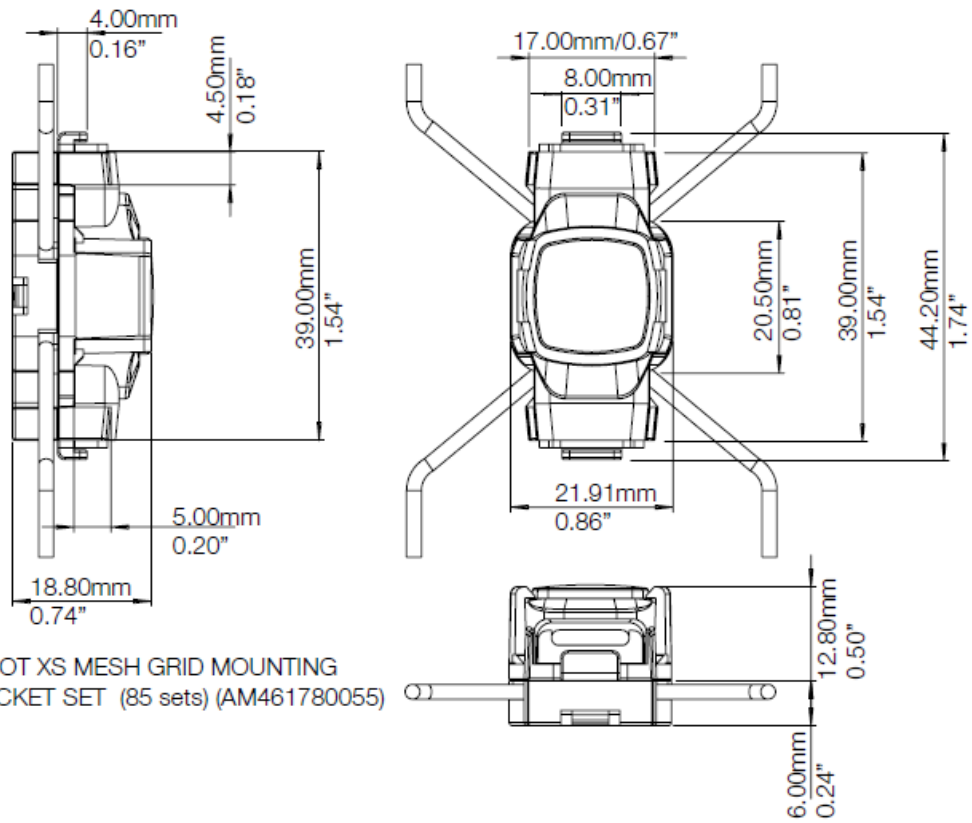
NOTE: The Mounting Bracket is designed to fit to this Ferrule dimension.

Standard Mesh Grid

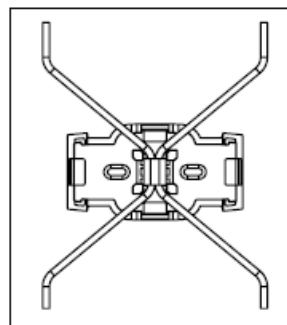
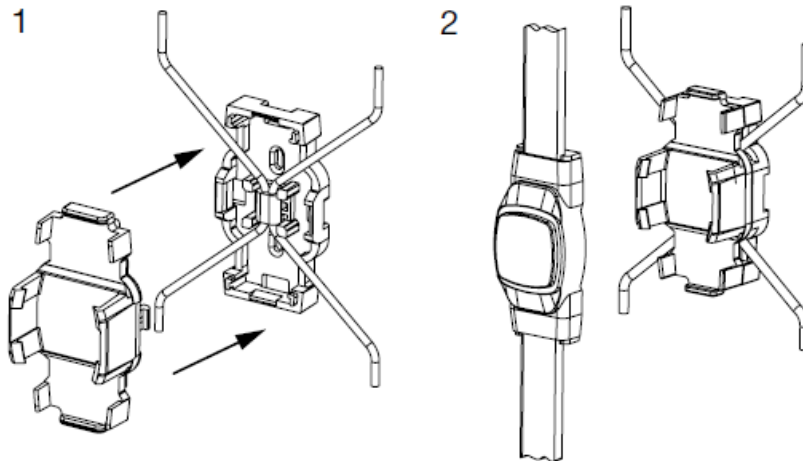
	Installed Mesh Pitch, x (mm)	Installed Mesh Pitch, y (mm)	Weight of MG / m ² (g)
MG15-40	45	62	937
MG15-50 (Standard)	60	77	722
MG15-60	80	84	517
MG15-70	90	105	423
MG15-80	100	117	370
MG15-90	125	125	320
MG15-100	135	140	282
MG15-120	170	175	204

NOTE: Pitch measured when the mesh grid is fully stretched.

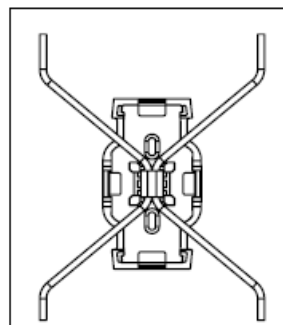
Allegro Dot XS Mounting Guide



AL DOT XS MESH GRID MOUNTING
BRACKET SET (85 sets) (AM461780055)

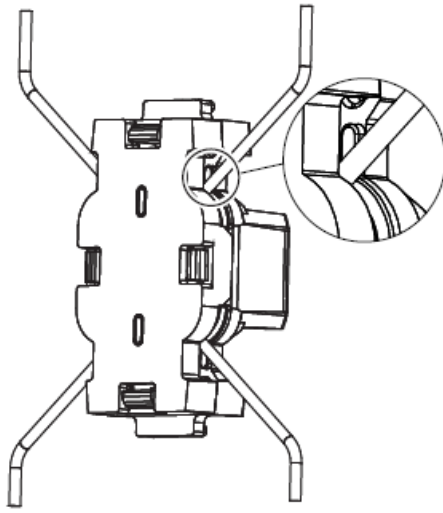


Horizontal cable run

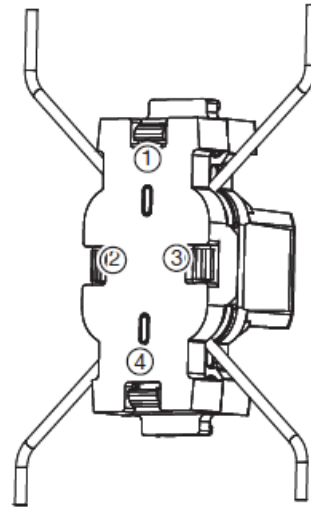


Vertical cable run

NOTE: Please refer to the installation guide for Mesh Grid installation planning.

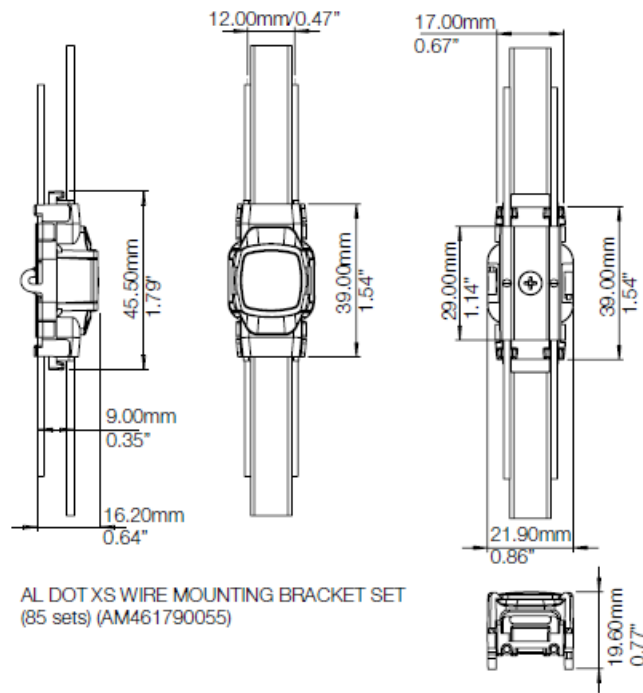


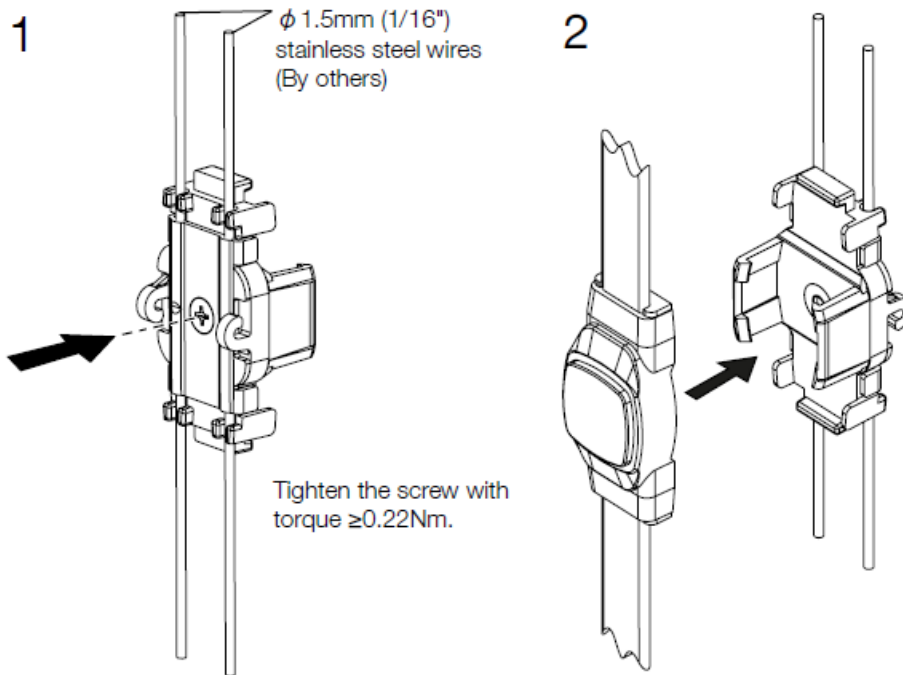
Please make sure the wires fit into the slot between back and front bracket.



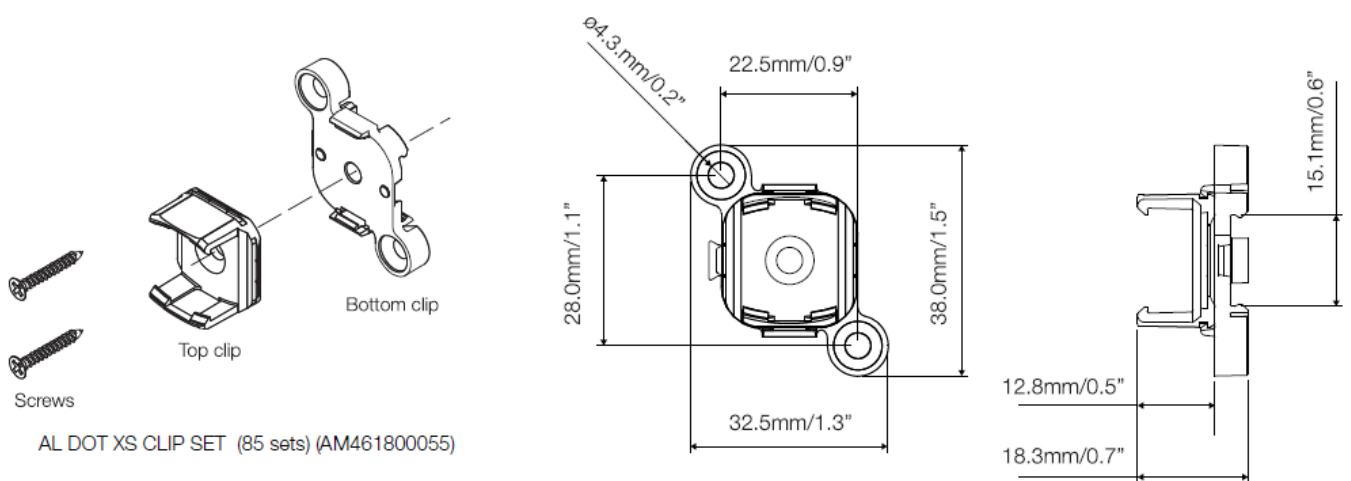
Please make sure the 4 locks are snapped tightly when installing.

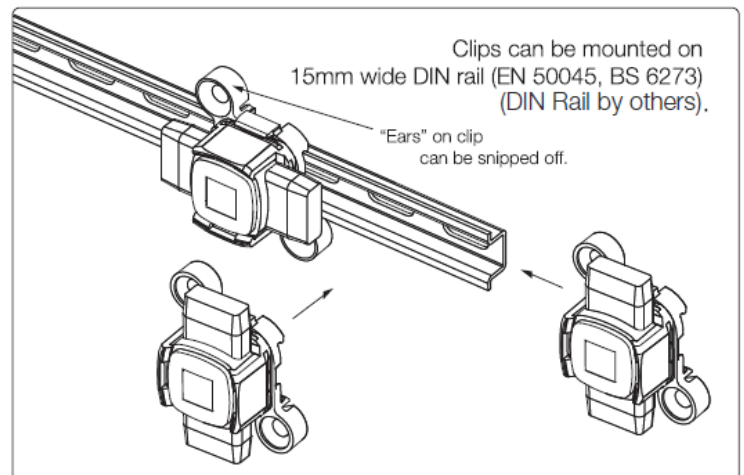
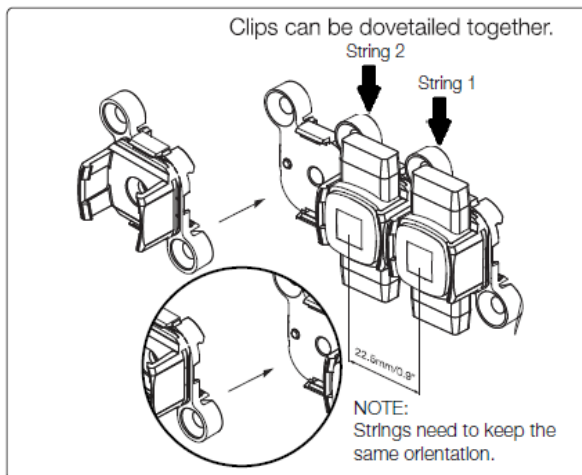
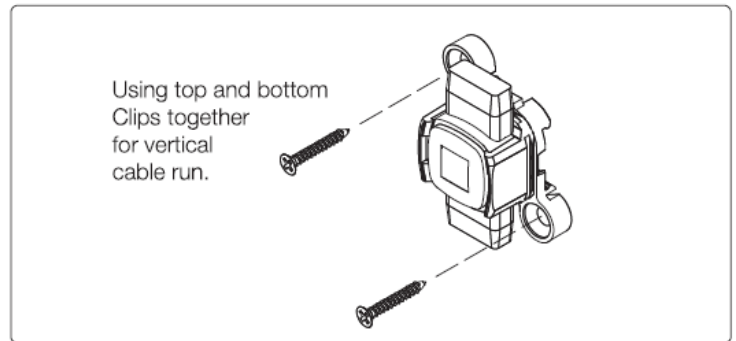
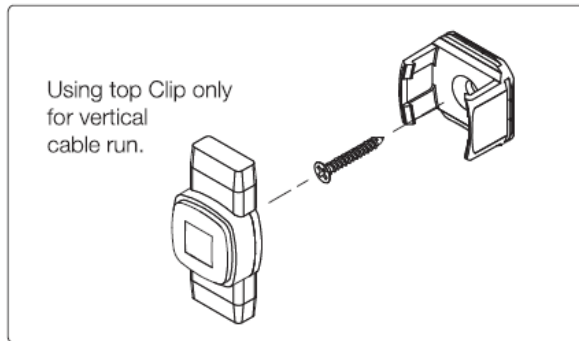
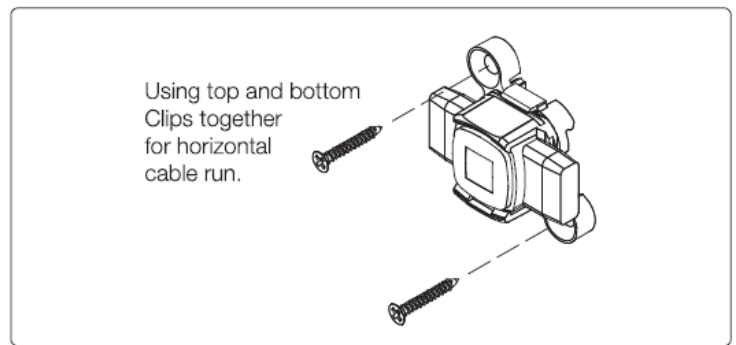
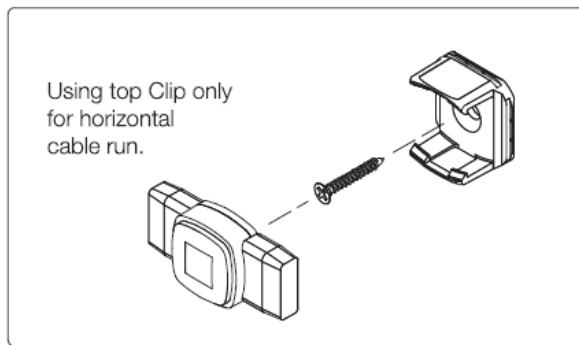
Mounting-WIRE MOUNTING





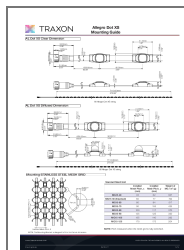
Mounting-DOT CLIP





- CONNECT TO THE POWER SUPPLY IN ACCORDANCE WITH NATIONAL REGULATIONS.
- IF THE EXTERNAL FLEXIBLE CABLE OF THIS LUMINAIRE IS DAMAGED, IT SHALL BE EXCLUSIVELY REPLACED BY THE MANUFACTURER OR A SIMILAR QUALIFIED PERSON IN ORDER TO AVOID ANY HAZARD.
- INSTALLATION/MAINTENANCE ONLY BY SKILLED PERSONNEL.
- DURING OVERHAUL/MAINTENANCE ONLY USE ORIGINAL PARTS.
- IF ANY LUMINAIRE IS SUBSEQUENTLY MODIFIED, THE PERSON RESPONSIBLE FOR THE MODIFICATION SHALL BE CONSIDERED THE MANUFACTURER.
- THE MANUFACTURER BEARS NO LIABILITY FOR DAMAGE CAUSED BY INAPPROPRIATE USE OR APPLICATION.

Documents / Resources



[TRAXON Allegro Dot XS RGBW Light](#) [pdf] User Guide
Allegro Dot XS RGBW Light, Allegro Dot XS, RGBW Light, Light

References

- [Traxon e:cue](#)
- [User Manual](#)

[Manuals+](#), [Privacy Policy](#)

This website is an independent publication and is neither affiliated with nor endorsed by any of the trademark owners. The "Bluetooth®" word mark and logos are registered trademarks owned by Bluetooth SIG, Inc. The "Wi-Fi®" word mark and logos are registered trademarks owned by the Wi-Fi Alliance. Any use of these marks on this website does not imply any affiliation with or endorsement.