

SMMI-CLASSM-VC Traulux Monitor



SMMI-CLASSM-VC Traulux Monitor Instruction Manual

[Home](#) » [Traulux](#) » SMMI-CLASSM-VC Traulux Monitor Instruction Manual 

Contents

- [1 SMMI-CLASSM-VC Traulux Monitor](#)
- [2 Specifications](#)
- [3 Assembly Instructions](#)
- [4 Diagrams and Parts List](#)
- [5 FAQ](#)
- [6 INSTRUCTIONS OF SAFETY AND WARNINGS](#)
- [7 Documents / Resources](#)
 - [7.1 References](#)
- [8 Related Posts](#)

traulux

SMMI-CLASSM-VC Traulux Monitor



SMMI-CLASSM-VC

This document provides the instruction manual for the Traulux model SMMI-CLASSM-VC. Detailed assembly instructions, safety information, and specifications are included to assist in the proper setup and use of the product.

Specifications

Reference	SMMI-CLASSM-VC
Maximum Load	110 kg
Manufacturer Website	charmex.net / traulux.net

Assembly Instructions

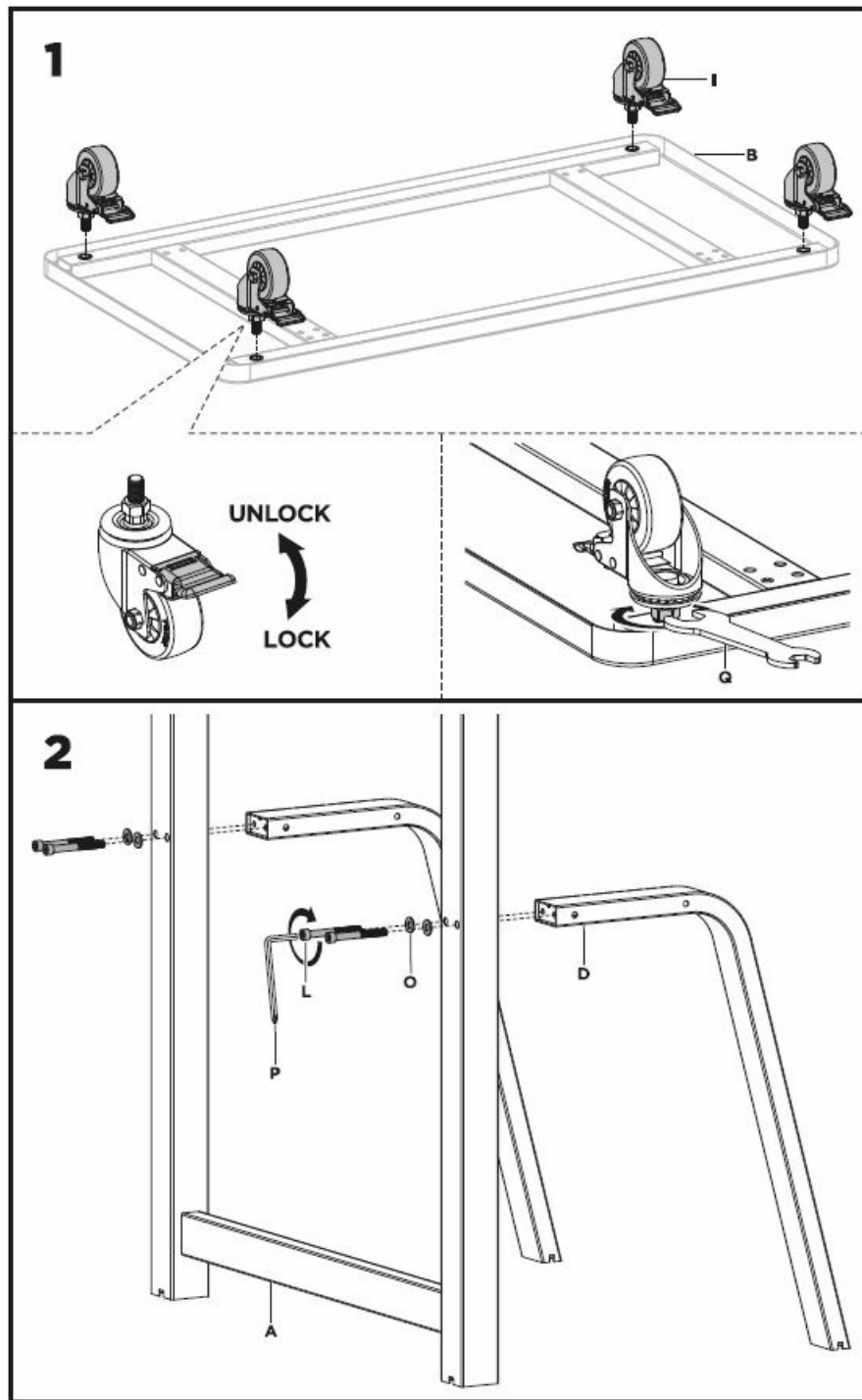
Illustrated diagrams guide the assembly of the SMMI-CLASSM-VC model. Each step includes detailed drawings with labeled parts for clarity.

- **Step 1: Base Assembly**

Components A (x2), B (x1), D (x2), E (x1), and F (x2) are used to assemble the base frame, with locking and unlocking the casters as shown in the diagram.

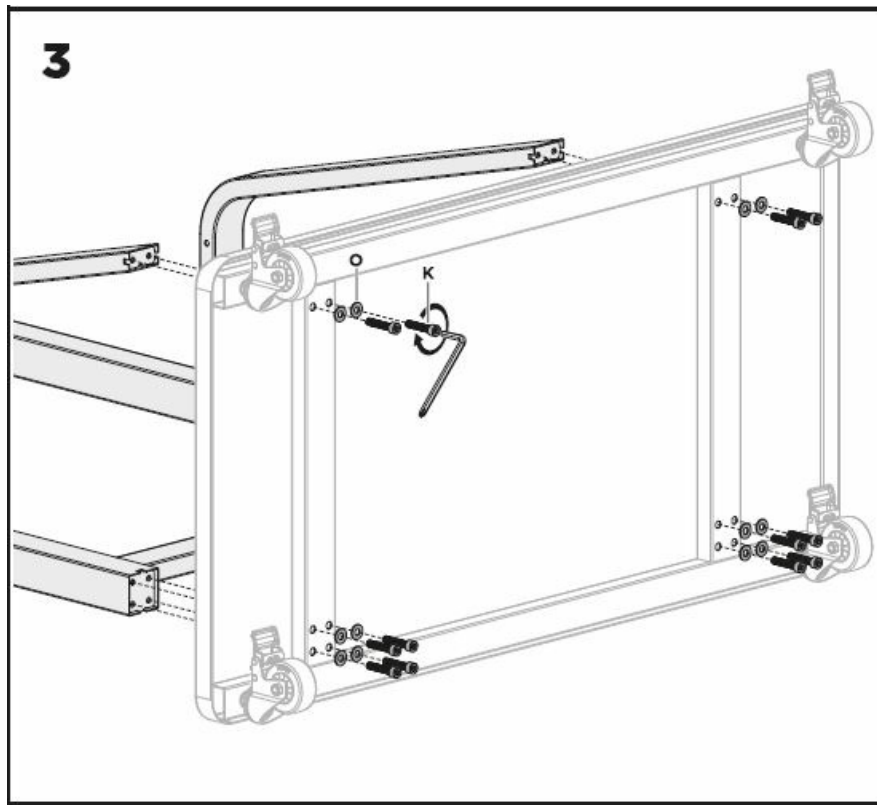
- **Step 2: Vertical Structure**

Vertical supports are attached to the base using components D and P as indicated in the assembly diagram.



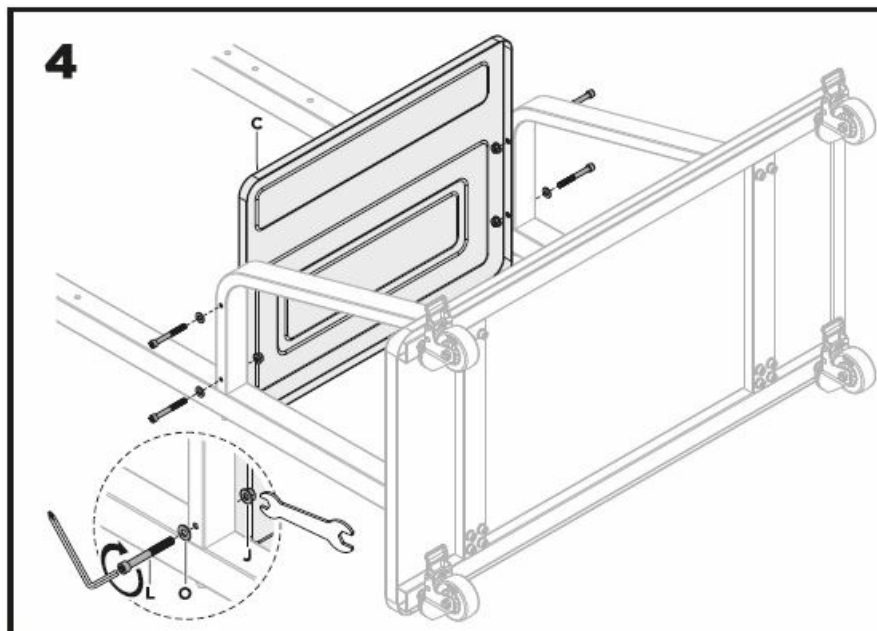
- **Step 3: Frame Construction**

The frame is constructed using components C, K, O, and various screws and bolts. The diagram shows the precise placement of each component.



- **Step 4: Mounting the Screen**

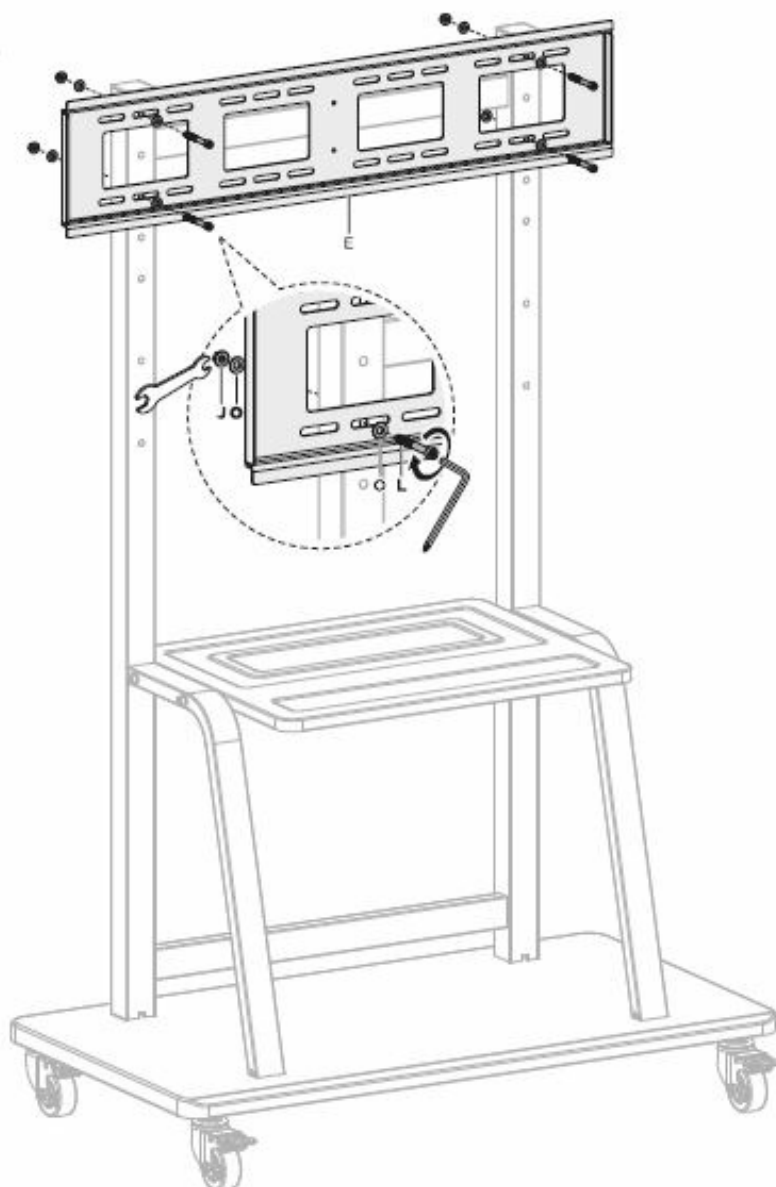
The screen mounting process involves attaching the brackets to the frame and adjusting the tension as required.



- **Step 5: Attaching Interface Plate**

The interface plate is attached to the brackets using screws, with a detailed view provided for securing the components.

5



a



b



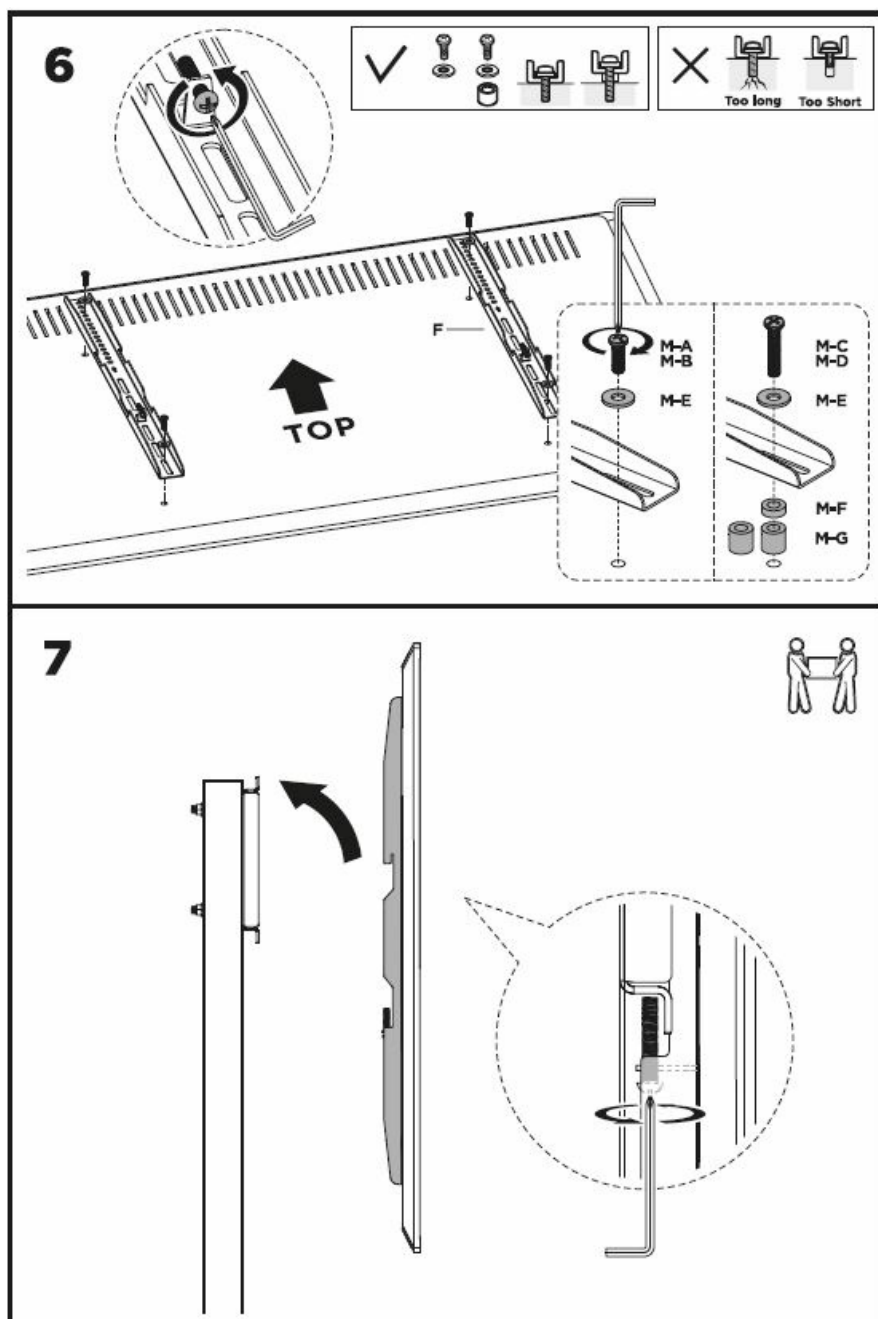
c

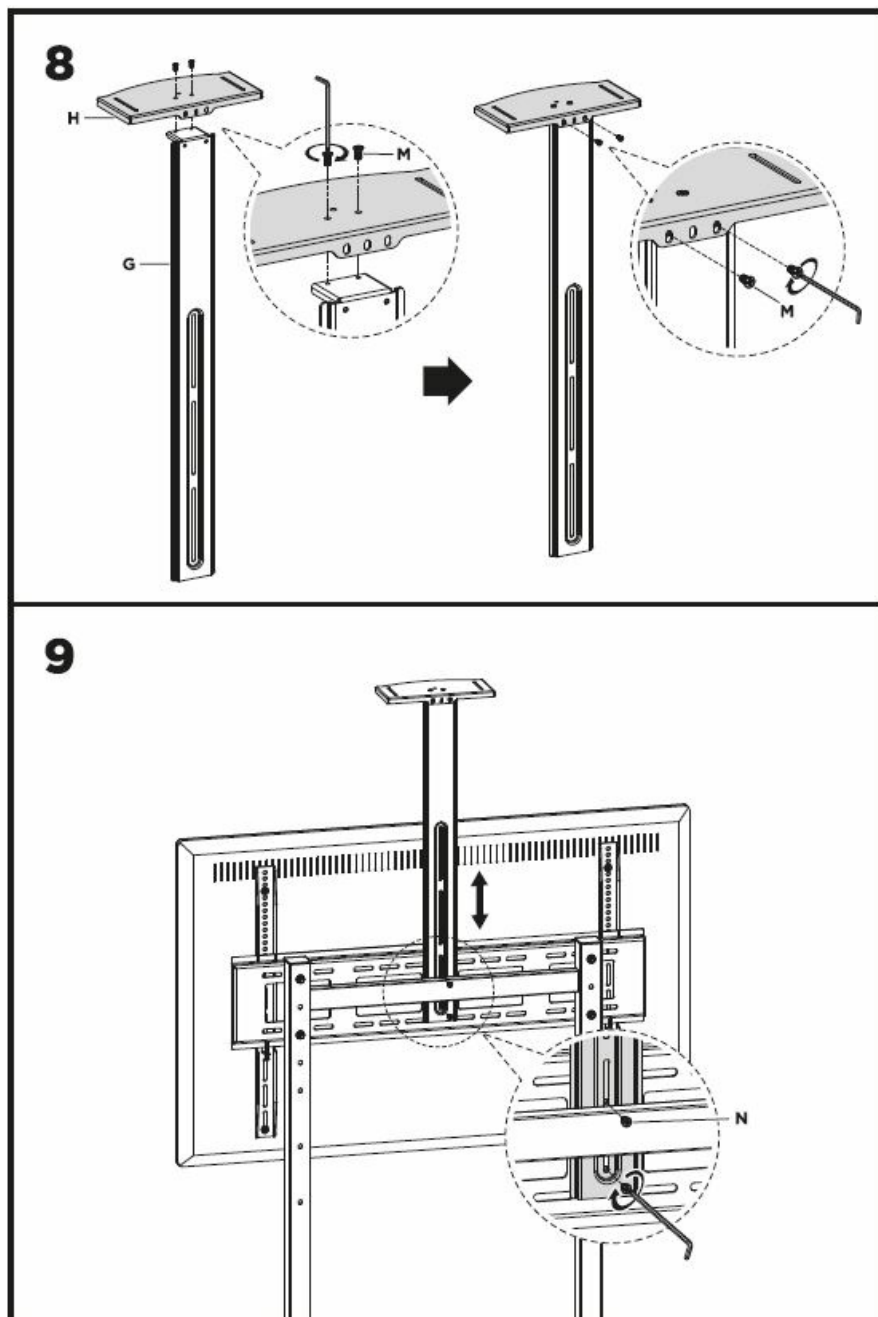


d



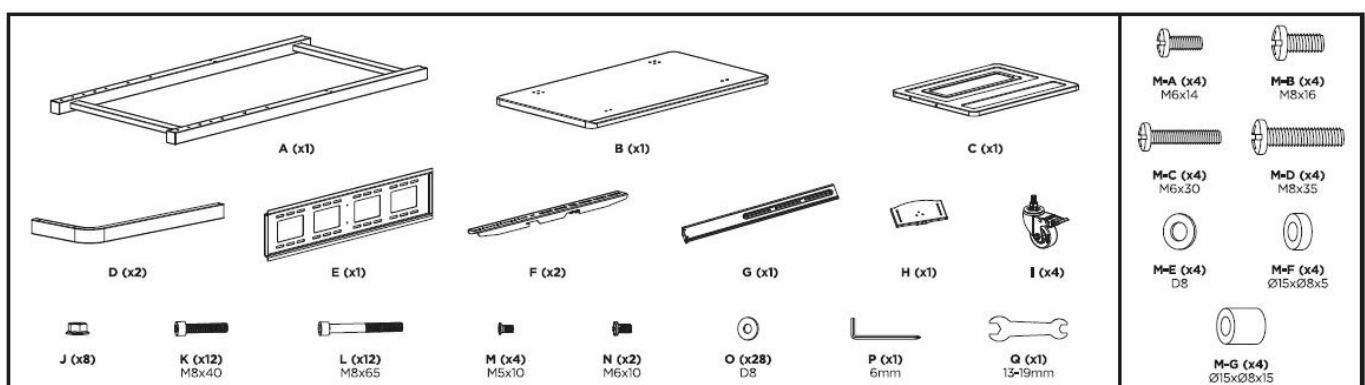
e





Diagrams and Parts List

Diagrams show the individual parts and their correct orientation during assembly. A parts list includes all the screws, bolts, and components needed, labeled with corresponding letters and numbers for identification.



FAQ

- **Where can I find the maximum load capacity for the SMMI-CLASSM-VC model?**

The maximum load capacity is 110 kg.

- **Where can I find additional information or support for my Traulux product?**

Additional information and support can be found at charmex.net or traulux.net.

- **Are all necessary components for assembly included with the purchase?**

Yes, all necessary parts for assembly are included and detailed in the parts list within the instruction manual.

- **Can I adjust the height of the screen once mounted?**

Yes, the mounting brackets allow for height adjustment as shown in the assembly diagrams.

IMPORTANT:

Failure to read, thoroughly understand, and follow all instructions can result in serious personal injury, damage to equipment, or voiding of factory warranty.

INSTRUCTIONS OF SAFETY AND WARNINGS

- Make sure that the mounting surface is strong enough to handle a mounted product and equipment.
- DO NOT EXCEED THE MAXIMUM LISTED WEIGHT CAPACITY.
- Always use an assistant or a mechanical lifting device to safely lift and position heavy products.
- Tighten screws firmly, but do not over-tighten. Over-tightening can cause product damage that greatly reduces the holding power.
- Keep a clear area and distance from moving parts when using the product.
- Use only as intended. Never stand, hang, or climb on the product.
- This product is intended for indoor use only.
- Any attempts to reconstruct the construction aren't allowed.
- This product may contain small items that could be a choking hazard if swallowed. Keep children away unless the product is intended for their use and all instructions and manuals are fully reviewed and understood by them.
- Check that the product is secure and safe to use at regular intervals (at least every three months).

Should you ever have any questions or feel you require help please contact your place of purchase for assistance.

Additional Information

For further assistance with assembly, usage, or any inquiries regarding the SMMI-CLASSM-VC model, please visit Traulux at traulux.net.

Documents / Resources



[traulux SMMI-CLASSM-VC Traulux Monitor](#) [pdf] Instruction Manual
SMMI-CLASSM-VC Traulux Monitor, SMMI-CLASSM-VC, Traulux Monitor, Monitor

References

- [X Traulux](#)
- [User Manual](#)

[Manuals+.](#) [Privacy Policy](#)

This website is an independent publication and is neither affiliated with nor endorsed by any of the trademark owners. The "Bluetooth®" word mark and logos are registered trademarks owned by Bluetooth SIG, Inc. The "Wi-Fi®" word mark and logos are registered trademarks owned by the Wi-Fi Alliance. Any use of these marks on this website does not imply any affiliation with or endorsement.