




TRANSNECT BC108 LED Strip App Bluetooth User Guide

[Home](#) » [TRANSNECT](#) » TRANSNECT BC108 LED Strip App Bluetooth User Guide 

Contents

- [1 TRANSNECT BC108 LED Strip App Bluetooth](#)
- [2 Introduction](#)
- [3 Warnings and safety instructions](#)
- [4 Instructions for OPERATION](#)
- [5 Technical Data](#)
- [6 Maintenance and Cleaning](#)
- [7 Storage](#)
- [8 Discarding – Recycling](#)
- [9 Service and Warranty](#)
- [10 Documents / Resources](#)
- [11 Related Posts](#)

TRANSNECT

TRANSNECT BC108 LED Strip App Bluetooth



Introduction

- Bluetooth APP control: This TV backlight strip is controlled by the “Happy Lighting” APP. By connecting the APP via Bluetooth, you can freely choose from 16 million colours and 20 dynamic modes, such as Blink, Jump, Strobe, etc. You can adjust the brightness from 1-100% and create your unique colour yourself, which is pretty cool.
- Music Sync Dance and Microphone Mode: This app has a built-in sensitivity adjustable microphone. With the APP control, you can choose the smart music mode, this light will dance with music rhythm and micro-phone sounds.
- S-shaped strip for easy installation: This TV backlight is designed as an “S” shape, you can bend it freely for different styles, very easy to install. The length of 9.8 ft makes the LED strip perfect for 40-60 inch TV decoration.
- Timing function: The Bluetooth TV backlight has a timing function and memory function. You can set the time to turn the light strip on and off automatically, it remembers your last mode settings, convenient for your next use. Build your intelligent home theater by this smart light.
- Enhanced quality: This RGB Led strip lighting set has 90 premium 5050 SMD LEDs. Thickened LED strip base plate can extend the lifetime. The strip can be cut between every 3 beads.

Receiving Shipment

When you receive the shipment, check that the contents of the package correspond to the packing slip. Inform your supplier if any parts are missing. If the equipment appears damaged, complain to the carrier immediately and give the supplier a detailed description of the damage. Keep the damaged packaging to substantiate your complaint.

Contents of Package

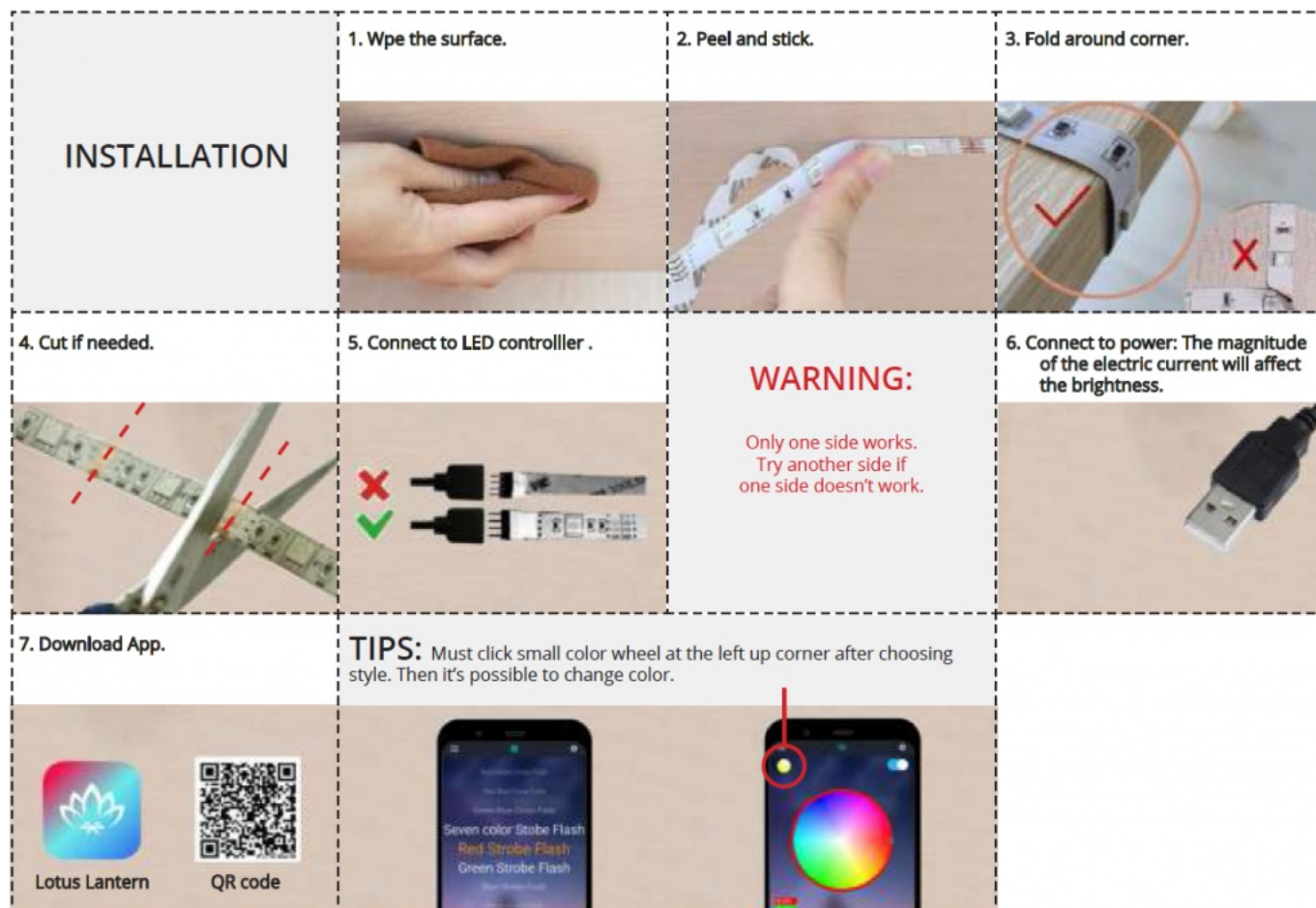
- TRANSNECT LED Strip App Bluetooth 3m – Model BC108 -EAN8720256660040 or TRANSNECT LED Strip App Bluetooth 5m – Model BC108 -EAN8720256660033
- Attached accessories
 - + 1 self-adhesive LED strip

- + 1 USB charging cable
- + 1 manual

Warnings and safety instructions

- Make sure that the packaging material does not fall into the hands of children. They may suffocate!
Read the instructions carefully before use and keep them in a safe place!
- Please note the risks and consequences associated with incorrect use and installation of the product. This may result in personal injury and damage to the device or products connected to it.
- Use the product only for the purposes specified in this manual.
- If the product or its accessories malfunction, are dropped or damaged, DO NOT use them and consult Customer Service.
- The product is designed and intended for private use. Do not use it for commercial purposes.
- DO NOT pull on the cord to unplug the appliance. DO NOT move the appliance by pulling or twisting the cord. DO NOT trip over the cable or make sure that the cable is NOT kinked, twisted or trapped.
- The product should not be assembled by children or by people with physical or mental disabilities. The device may only be used if a supervisor is present who is responsible for the user's safety.
- Use and store the product out of the reach of children.
- DO NOT disassemble, repair or restore the product and its parts. This may cause damage to the unit and accessories. For your own safety, these parts should only be replaced by authorised service personnel. Always send the product to a service centre for repair in order to avoid damage and personal injury.
- Before connecting the product, make sure that the mains voltage indicated on the type plate matches that of your mains.
- DO NOT use or install the product near a bathtub, shower, swimming pool, or near a sink or basin filled with water. DO NOT allow the product and accessories to come into contact with water. DO NOT immerse them in water.
- If water gets into or on the product or accessories, switch off the device immediately and contact our customer service. DO NOT touch the product or accessories with wet hands.
- Carefully inspect the place where you place the product and DO NOT place it in places with high temperature/humidity or where the product may come into contact with water; Near ventilation grills or places with a lot of dust or fumes; On vertical or sloping surfaces; In places where shocks or vibrations are frequent.
- Do not drop the product and accessories and protect the product from strong impacts.

Instructions for OPERATION



Technical Data

Dimensions lxxh	300cm or 500cm
Weight	195 g
Material	PVC
Colour	multi-color
Cable with plug on product	No
Connection voltage	220v
Wattage	0W
Lumen per light point	1 lm
IP value	IP65
Light source type	LED
Energy consumption	A++
Colour temperature	1000 K
Light source life	10 year
With dimming function	Yes
Operation via mobile app	Yes
Bluetooth	Yes

Maintenance and Cleaning

Clean the product with a clean, dry cloth. Do NOT allow the product and other accessories to come into contact with water.

Storage

Store the product and accessories in a dry, clean place. Do not store the device in extremely high or low temperatures.

Discarding – Recycling

Think of the environment and contribute to a cleaner living environment!

At the end of its life, do not throw away the product and its accessories with normal household waste, but take them to a governmental collection point for recycling.


Service and Warranty

- If you need service or information about your product, please do not hesitate to send an e-mail to customerservice@best2buy.nl
- We grant a 1-year warranty on our products. The customer must be able to present a proof of purchase and the guarantee must be claimed within a period of 1 years from the date of purchase. Please note that the guarantee does not apply: for damage caused by incorrect use or repair; for parts subject to wear and tear; for defects of which the customer was aware at the time of purchase; for defects caused by the customer's own fault; for damage caused by third parties.

Disclaimer

Changes subject to change; specifications may change without notice.

Documents / Resources

	TRANSNECT BC108 LED Strip App Bluetooth [pdf] User Guide BC108 LED Strip App Bluetooth
---	---