

TRANSFORMERS TF-T02 True Wireless Bluetooth Headset



TRANSFORMERS TF-T02 True Wireless Bluetooth Headset Instruction Manual

[Home](#) » [TRANSFORMERS](#) » TRANSFORMERS TF-T02 True Wireless Bluetooth Headset Instruction Manual 

Contents

- 1 TRANSFORMERS TF-T02 True Wireless Bluetooth Headset
- 2 Product Information
- 3 Product Usage Instructions
- 4 Packing list
- 5 Product Diagram
- 6 Important Tips
- 7 Product specifications
- 8 Charging case specifications
- 9 LED Indicator Status
- 10 Operating Instruction
- 11 Touch operation
- 12 Restore factory settings
- 13 Warranty Statement
 - 13.1 Warranty Service
- 14 FCC Warning
- 15 Documents / Resources
 - 15.1 References

TRANSFORMERS

TRANSFORMERS TF-T02 True Wireless Bluetooth Headset



Product Information

Specifications

- **Device Type:** [Product Name]
- **Approved Manufacturer:** [Manufacturer Name]
- **Compliance:** FCC part 15
- **Radiation Exposure Limits:** FCC-compliant
- **Minimum Distance:** 0cm between radiator and body

Product Usage Instructions

Caution

Any changes or modifications to this device not explicitly approved by the manufacturer could void your authority to operate this equipment.

FCC Compliance

This device complies with part 15 of the FCC Rules. Operation is subject to the following two conditions:

1. This device may not cause harmful interference.
2. This device must accept any interference received, including interference that may cause undesired operation.

Radiation Exposure Limits

This equipment complies with FCC radiation exposure limits set forth for an uncontrolled environment. It is recommended to install and operate the equipment with a minimum distance of 0cm between the radiator and your body.

Frequently Asked Questions (FAQ)

- **Q: What is the FCC compliance for this device?**

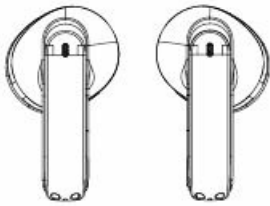
A: This device complies with part 15 of the FCC Rules.

- **Q: How far should I keep the device from my body?**

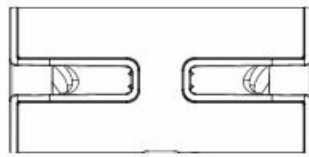
A: It is recommended to maintain a minimum distance of 0cm between the radiator and your body.

TF-TO2 True Wireless Bluetooth Headset Instruction manual.

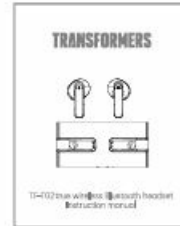
Packing list



headset X2



Charging CaseX1

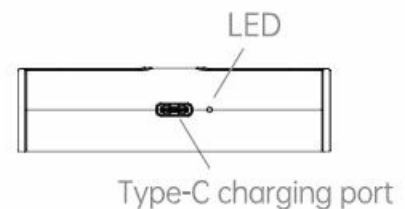
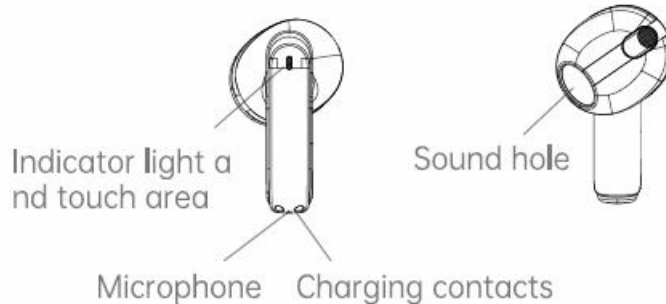


Instructions
Warranty card



Type-C Charging
CableX1

Product Diagram



Important Tips

1. Except for the operation methods specifically marked in the manual, please do not try to disassemble or replace any parts of the earbuds.
2. Don't put the earbuds in the water or any other liquid. The earbuds are not waterproof.
3. If any liquid enters the product accidentally, please disconnect and remove the connection immediately.
4. Please make sure that there is no water on your hands when installing or uninstalling the product to avoid electric shock.
5. Do not put the product near the heat source or expose it to the fire source directly.
6. Do not put the product in an environment with a strong electromagnetic force, otherwise, it will cause product malfunction.

Product specifications

- Bluetooth version: V5.3

- Transmission distance: 10M
- Music time: About 5 hours
- Talk time: About 3.5 hours
- Standby time: About 90 hours
- **Horn size:** Φ 13mm
- **Charging time:** 1.5 hours
- **Battery capacity:** 33mAh
- **Rated input:** 5V \equiv 30mA

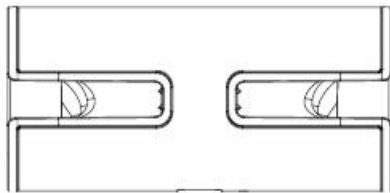
Charging case specifications

- **Battery capacity:** 300mAh
- **Charging time:** 1.5 hours
- **Rated input:** 5V \equiv 300mA
- **Headset charging times:** About 3 times

(All technical information is subject to actual performance)

To charge the charging box

The Type-C charging cable connects the charging bay to the 5V power adapter. (Warm tip: When the headset battery is less than 3.3V, it will broadcast a reminder of low battery (voice prompt: battery low). The red light flashes slowly, reminding me once every minute. Please charge the earphones in time.



Rated input: 5V \equiv 30mA (headset)



Rated input: 5V \equiv 300mA (charging case)

LED Indicator Status

Power On	The red and blue lights flash alternately
Power Off	The red light flashed three times
Pairing status	The red and blue lights flash alternately
Earphone charging	The red light is on.
Charging the earphone Charging case status	Blue light on
The charging bay is low	Blue light flashing
Charge the charging bay	Blinking red lamp
Charge bay is fully charged	The red light is on
factory data reset	The red light blinks three times

Operating Instruction

1. Power on

- **Method 1:** Remove the earphones from the charging bay and turn on the earphones
- **Method 2:** Long press the left and right earphone touch area for 3 seconds (Startup prompt tone: "power on")

2. Shutdown

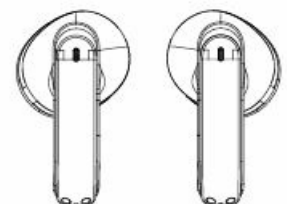
- **Method 1:** Put it back in the charging bay, and the headset automatically shuts off
- **Method 2:** If the headset is not connected within 5 minutes, the device will automatically shut down (Shutdown prompt tone: "power off")

3. Pairing

- **Step 1:** After the device is started, the left and right earphones are automatically connected and enter the pairing state with mobile phones (prompt tone: "Pairing").
 - **Step 2:** Open the Bluetooth list of the smart device, search for "TF-TO2" and connect
- Tips:** If the left and right earphones do not match, please restore the factory Settings, put them back in the charging box and turn on the automatic pairing

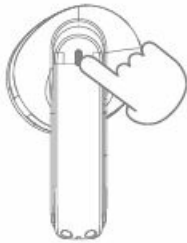


Connection succeeded:
Voice prompt: "connected"



Touch operation

- General mode



Voice assistant: Long press left earphone for 2 seconds to start/close ("drip" sound release)

Volume Plus: Click the right earphone

Volume reduction: Click the left earphone

- Music playback mode



Play/Pause: Double click any headset touch button

Last song: Three strikes left earphone

Next song: Three strikes right earphone

- Call mode



Answer: Double click the touch button of any headset

End Call: Double click the touch button of any headset

Reject a call: Press and hold any headset for 2 seconds

- Game/Music mode switch




Music mode: Long press the right ear touch button for 2 seconds (Sound: "music mode")

Game mode: Long press the right ear touch button for 2 seconds (Sound: "game mode")

Restore factory settings

If the left and right earphones are powered on and not connected to the device, press L/R 5 times and the earphones turn off with a red light flash three times. Factory Settings are restored successfully.

The name and content of harmful substances in the earbuds

Part Names	Harmful Substances					
	Pb	Hg	Cd	Cr(VI)	PBB	PBDE
Printed circuit assembly	<input type="radio"/>	<input type="radio"/>	<input type="radio"/>	<input type="radio"/>	<input type="radio"/>	<input type="radio"/>
Small structural parts such as shell	<input type="radio"/>	<input type="radio"/>	<input type="radio"/>	<input type="radio"/>	<input type="radio"/>	<input type="radio"/>
<p>This form is compiled in accordance with SJ/T 11364.</p> <p>O:Indicates that the content of the hazardous substance in all homogeneous materials of the part is in below the limit required by GB/T 26572.</p> <p>X:Indicates that the hazardous substance at least in a certain homogeneous material of the part exceeds The limit requirements specified in GB/T 26572.</p> <p>The parts marked with "X" on the form are all harmful due to the limitations of global technological development. Substitution of substances.</p>						
<p>Printed circuit board components: Including printed circuit boards and their parts,electronic components, etc.and depending on the product model,the earbuds you purchased may not contain all the above components.</p>						
<div style="display: flex; align-items: center;">  <div style="margin-left: 10px;"> <p>Electronic and electrical products sold in the People' s Republic of China must mark this LOGO,the number in the logo represents the product under normal use Environmental protection use period.</p> </div> </div>						

Warranty Statement

Disclaimer

This user manual does not have any form of guarantee, position expression or other implication. The mentioned products, specifications and information are for reference only, and the content will also be updated on the web at any time without additional separate notice.

Warranty statement:

The product attached to this document is guaranteed as follows: If the product is twelve (12) months from the date of purchase("Warranty Period"), under normal conditions of use due to quality defects damaged, can be repaired.Free repair; free replacement if the manufacturer confirms that it cannot be repaired; repaired or replaced product. Continue to enjoy the warranty during the remaining warranty period (the shortest not less than 30 days). Purchased by sale the ticket date shall prevail; if the purchase date cannot be determined, the warranty period shall be 13 (13) months.

If you apply for a warranty, please call the product service hotline first and execute it in the manner instructed by us. When applying for a warranty, you need to provide an accurate, complete and filled-out valid sales invoice.

The above guarantee does not apply to the following situations:

1. Exceeding the validity period of the three packs;
2. Altering the warranty card and product code does not match the product body;

3. Causes caused by misuse, abuse or improper transportation, use, maintenance or storage obstacles or damage;
4. Failure or damage caused by force majeure (such as earthquake, war, disaster, etc.) or accident;
5. The zipper and tower buckle are damaged due to excessive force;
6. Disconnection or tearing caused by excessive load;
7. Any damage caused by sharp objects;
8. Products with signs of burning or flooding;
9. Damage caused by unauthorized disassembly;
10. Aging, discolouration, abrasion, rupture and other losses that occur during the normal use of the product
11. If the original identification label of the product is changed or damaged, this guarantee will become invalid.

The completeness and appearance of the product and accompanying materials are not within the scope of the guarantee. You should check on the spot and raise objections to any discrepancies. The above guarantees are all guarantees we make regarding the products and are only applicable in mainland China. Nothing in this document affects consumer rights that cannot be excluded or restricted under the law profit.

- **Service supervision hotline:** 400-885-8808.

Warranty Service

Dear user, this warranty card is the proof of your future warranty application, please cooperate with the seller to fill it out and keep it for future use!

User info			
User name		Email	
Contact number		Postal code	
Mailing address			
Product information			
Product name		Product number	
Product barcode / Serial number / Batch number			

Vendor information			
Name			
Address			
Contact number		Postal code	
Sales date		Invoice number	
Remark			

Certificate of Approval

Product No: _____

Production Time: _____

QC: _____



FCC Warning

This equipment has been tested and found to comply with the limits for a Class B digital device, under part 15 of the FCC Rules. These limits are designed to provide reasonable protection against harmful interference in a residential installation. This equipment generates, uses and can radiate radio frequency energy and, if not installed and used per the instructions, may cause harmful interference to radio communications.

However, there is no guarantee that interference will not occur in a particular installation. If this equipment does cause harmful interference to radio or television reception, which can be determined by turning the equipment off and on, the user is encouraged to try to correct the interference by one or more of the following measures:

- Reorient or relocate the receiving antenna.
- Increase the separation between the equipment and the receiver.

- Connect the equipment to an outlet on a circuit different from that to which the receiver is connected.
- Consult the dealer or an experienced radio/TV technician for help.

Caution:


Any changes or modifications to this device not explicitly approved by the manufacturer could void your authority to operate this equipment.

This device complies with part 15 of the FCC Rules. Operation is subject to the following two conditions:

1. This device may not cause harmful interference, and
2. This device must accept any interference received, including interference that may cause undesired operation.

This equipment complies with FCC radiation exposure limits set forth for an uncontrolled environment. This equipment should be installed and operated with a minimum distance of 0cm between the radiator and your body.

Documents / Resources

	TRANSFORMERS TF-T02 True Wireless Bluetooth Headset [pdf] Instruction Manual 2BAQF-TF-T02, 2BAQFTFT02, TF-T02, TF-T02 True Wireless Bluetooth Headset, True Wireles s Bluetooth Headset, Wireless Bluetooth Headset, Bluetooth Headset, Headset
--	---

References

- [User Manual](#)