



## TRAN LED VEVE Linear Fixtures Installation Guide

[Home](#) » [TRAN LED](#) » TRAN LED VEVE Linear Fixtures Installation Guide 

TRAN LED VEVE Linear Fixtures



## Contents

### [1 Mounting](#)

### [2 HARDWARE](#)

#### [2.1 Screw Mounting](#)

#### [2.2 Magnet Mounting](#)

#### [2.3 Magnet Mounting](#)

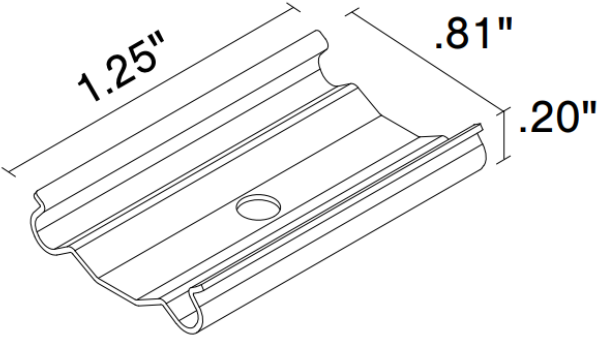
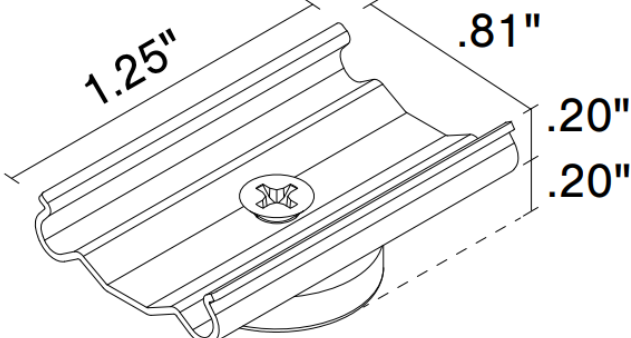
### [3 Documents / Resources](#)

#### [3.1 References](#)

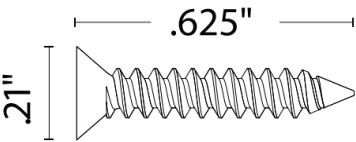
### [4 Related Posts](#)

## Mounting

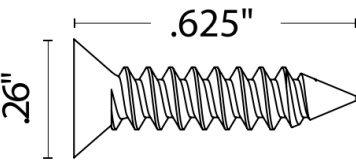
NOTE: 2 clips provided for 4' or less; 4 clips provided for greater than 4'

Stainless Steel Clip (SST-01)	Magnet Clip (MG-01)
	

**HARDWARE**

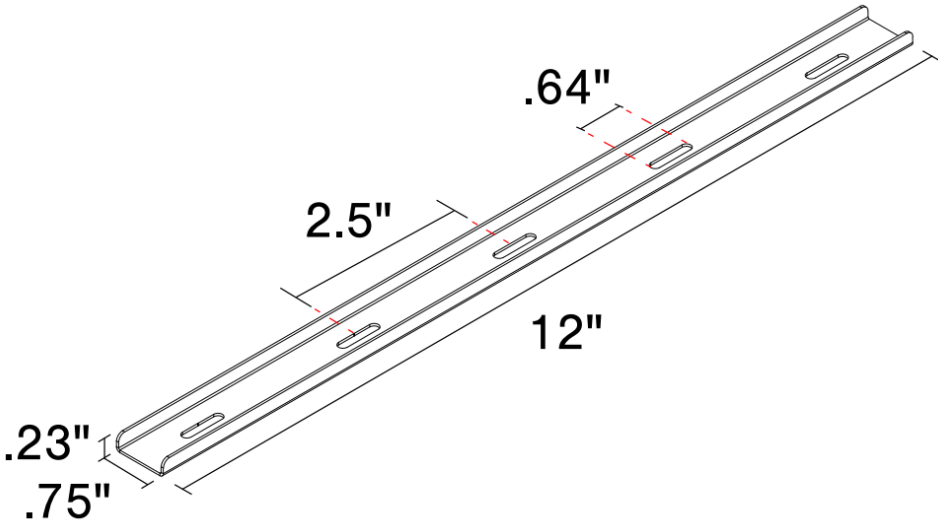


#4x5/8" Flat head screw (Included)



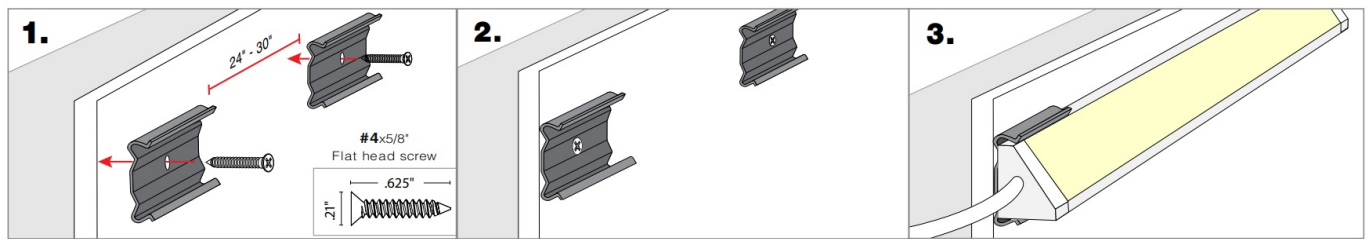
#6x5/8" Flat head screw (Included)

**Magnet Mount Accessory  
(MMA)**

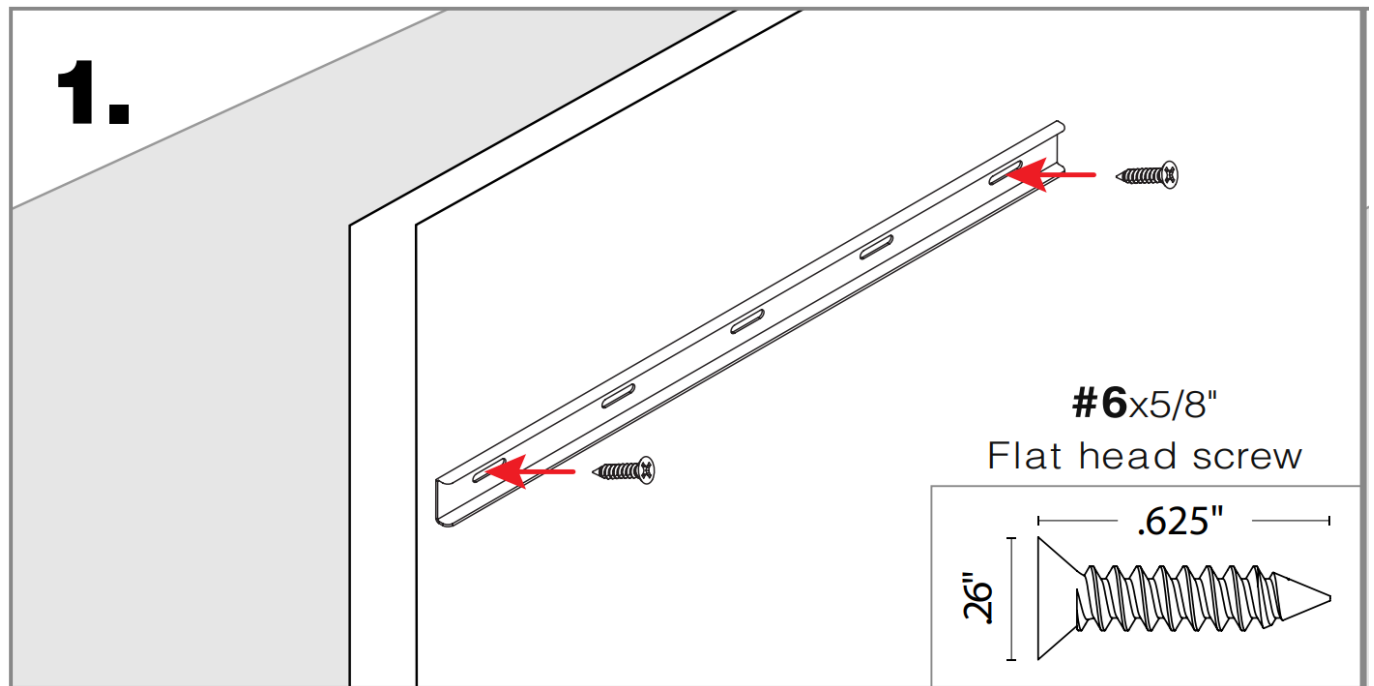


(Sold separately)

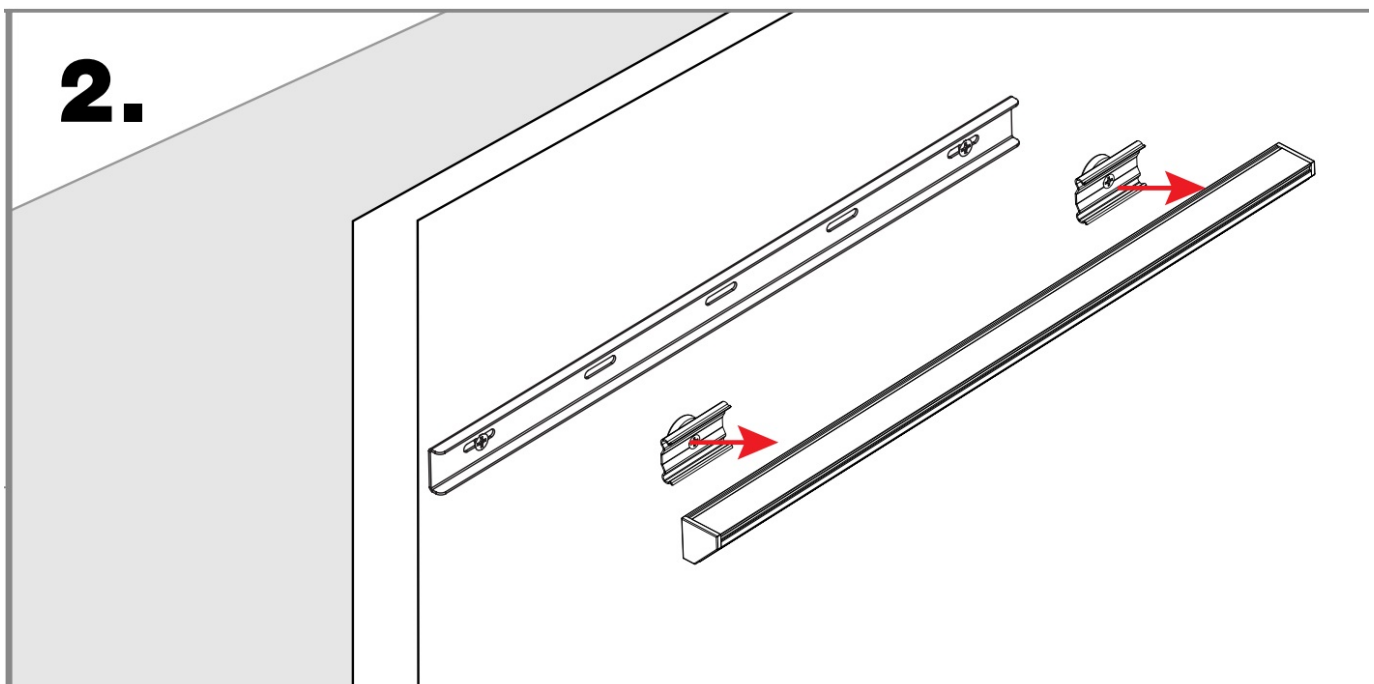
## Screw Mounting



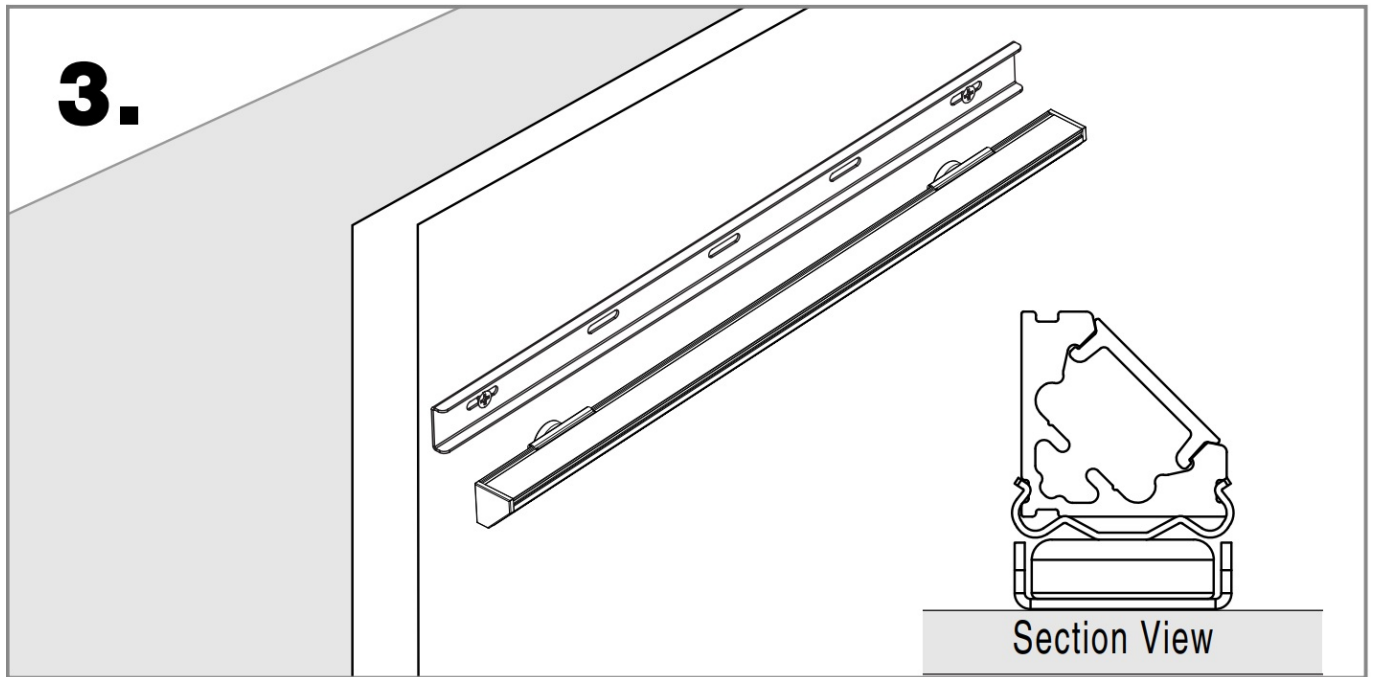
## Magnet Mounting



Using the #6 Flat head screws, mount two screws into the 12" magnet bracket through the slotted holes at each end



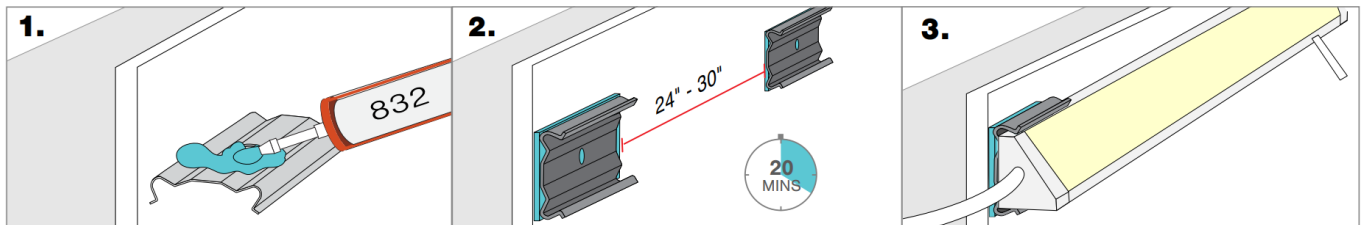
Attach the magnet clips onto the extrusion



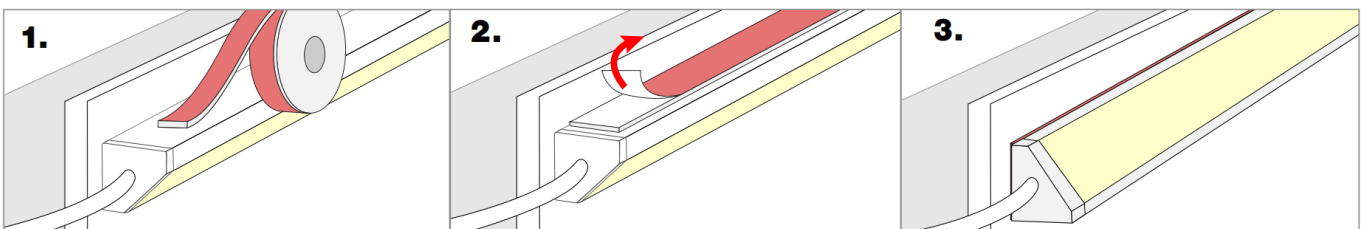
Connect the assembled extrusion and its magnet clips to the magnet bracket, the install should match the section view

**NOTE:** The magnet clips should be offset to the flat heads used to secure the bracket, to maximize magnetic connection.

#### Magnet Mounting



**NOTE:** Apply silicone in a well ventilated area. 832 Silicone is sold with caulking gun. Do not use in any submersible applications.

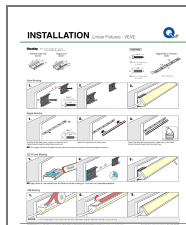


#### NOTES:

- Field modifications must comply with Q-Tran's installation methods otherwise warranty is null and void



## Documents / Resources



[TRAN LED VEVE Linear Fixtures](#) [pdf] Installation Guide  
VEVE Linear Fixtures, VEVE Fixtures, VEVE, Fixtures, Linear Fixtures

## References

- [RealNames | A more meaningful email address](#)
- [LED Lighting Systems, Linear LED Lights, LED transformers | Q-Tran](#)