



TRAN LED ROND Linear Fixtures Installation Guide

[Home](#) » [TRAN LED](#) » TRAN LED ROND Linear Fixtures Installation Guide 

TRAN LED ROND Linear Fixtures



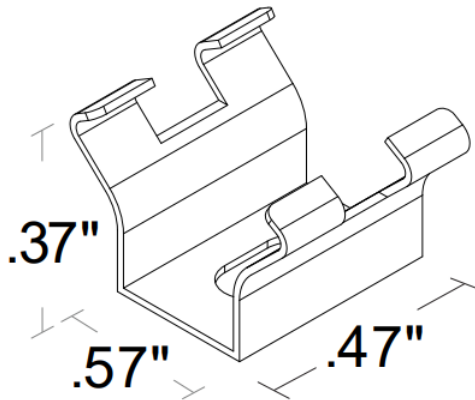
Contents

- [1 Mounting](#)
- [2 Installations Instruction](#)
 - [2.1 Screw Mounting](#)
 - [2.2 832 Silicone Mounting](#)
- [3 Customer Support](#)
- [4 Documents / Resources](#)
 - [4.1 References](#)
- [5 Related Posts](#)

Mounting

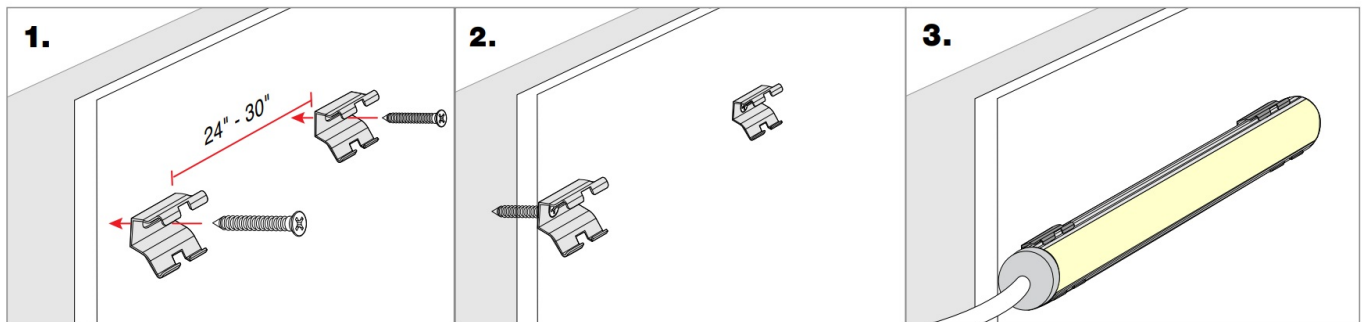
NOTE: 2 clips provided for 4' or less; 4 clips provided for greater than 4'

Stainless Steel Clip (SST-07)

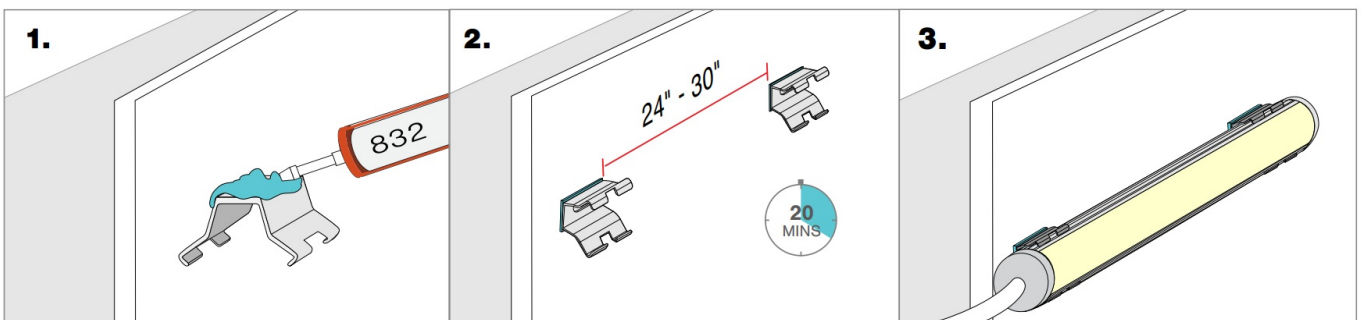


Installations Instruction

Screw Mounting



832 Silicone Mounting



NOTE: 832 Silicone use in a well- ventilated area, 832 Silicone sold with Caulking gun. Do not use in any submersible applications.

NOTES:

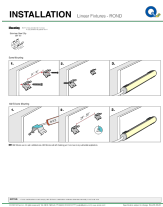
- Field modifications must comply with Q-Tran's installation methods otherwise warranty is null and void

Customer Support

© 2022 Q-Tran Inc. All rights reserved
155 Hill St. Milford, CT 06460
203-367-8777
sales@q-tran.com
www.q-tran.com



Documents / Resources

	<p>TRAN LED ROND Linear Fixtures [pdf] Installation Guide ROND Linear Fixtures, ROND, ROND Fixtures, Linear Fixtures, Fixtures</p>
---	---

References

- [RealNames | A more meaningful email address](#)
- [Q-Tran | LED Lighting Systems, Linear LED Lights, LED transformers | Q-Tran](#)

[Manuals+](#)