



# TRAN LED DMX-US1 DMX Controller Instruction Manual

[Home](#) » [TRAN LED](#) » TRAN LED DMX-US1 DMX Controller Instruction Manual 

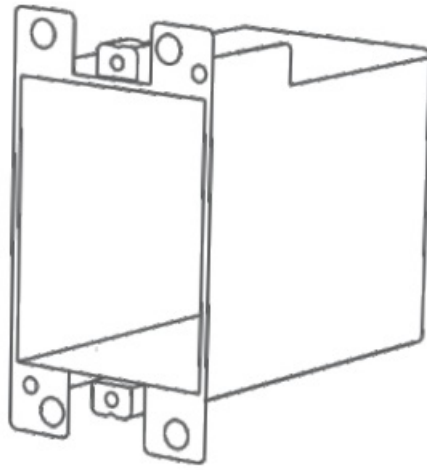


## Contents

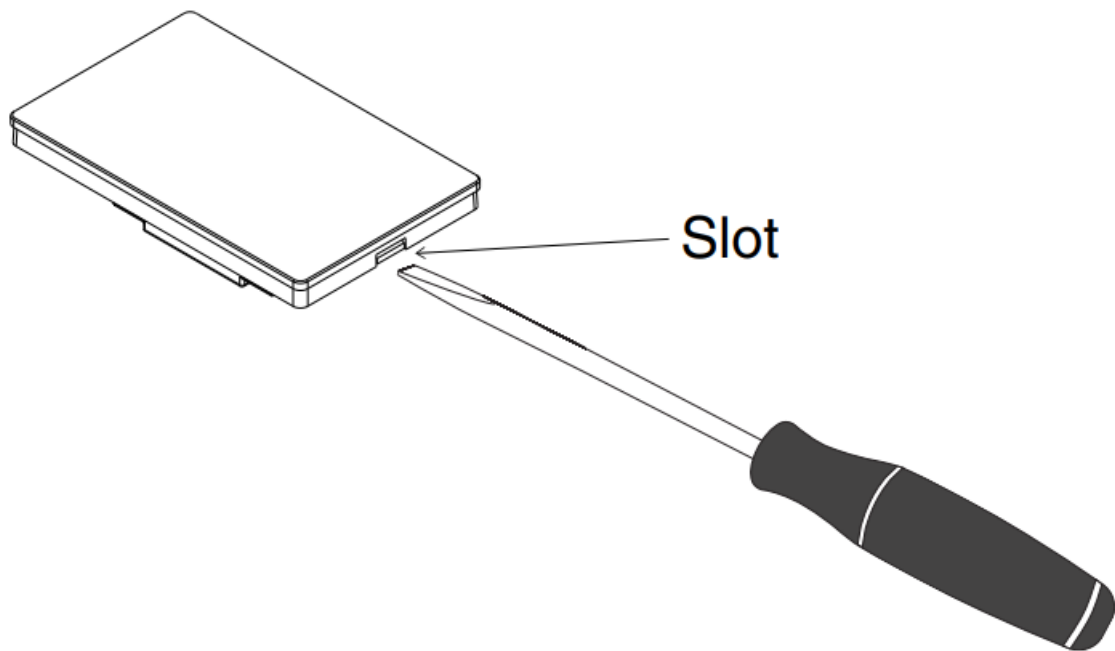
- [1 DMX-US1 DMX Controller](#)
- [2 Documents / Resources](#)
  - [2.1 References](#)
- [3 Related Posts](#)

## DMX-US1 DMX Controller

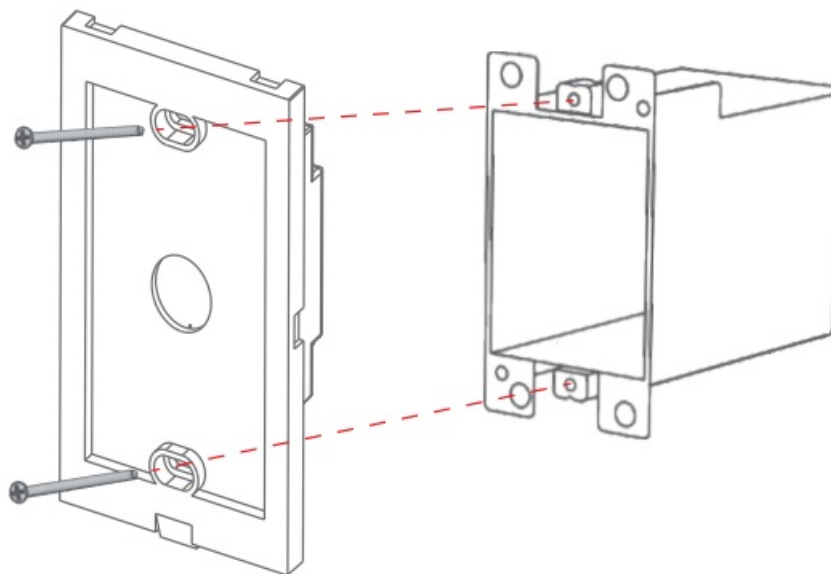
1. Install the junction box into the wall.



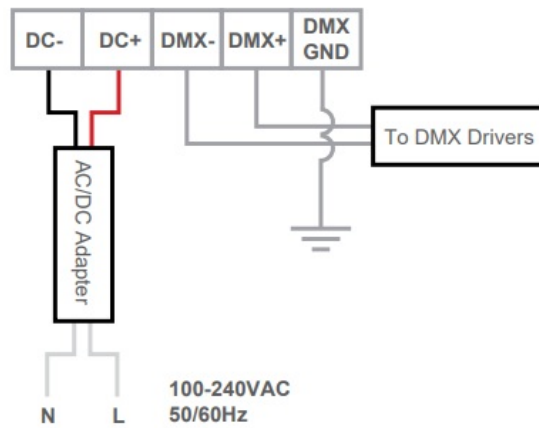
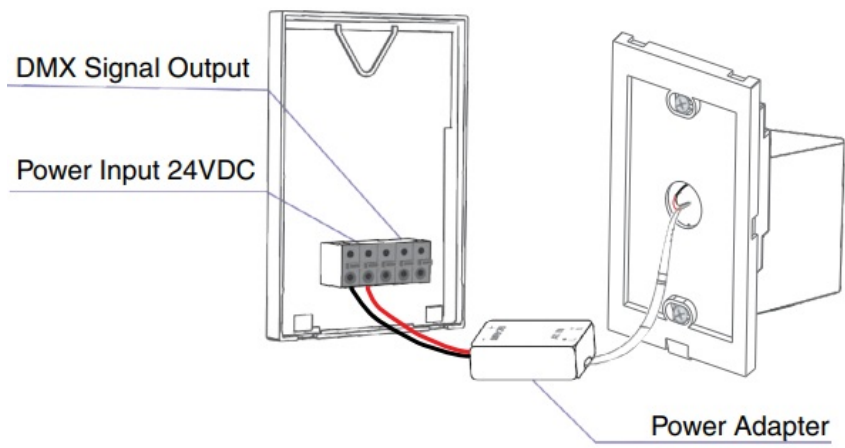
2. Use a flathead screwdriver to pry the baseplate as shown:



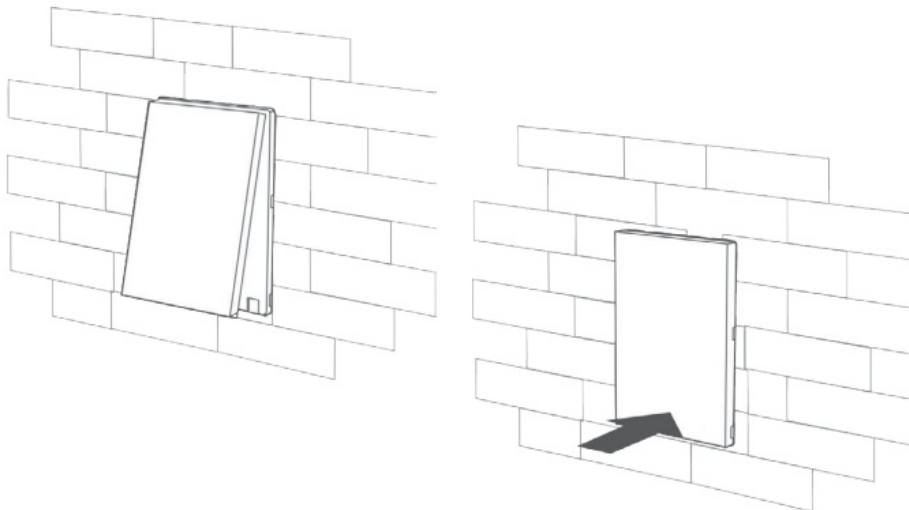
3. Screw the baseplate to the junction box in the wall firmly.



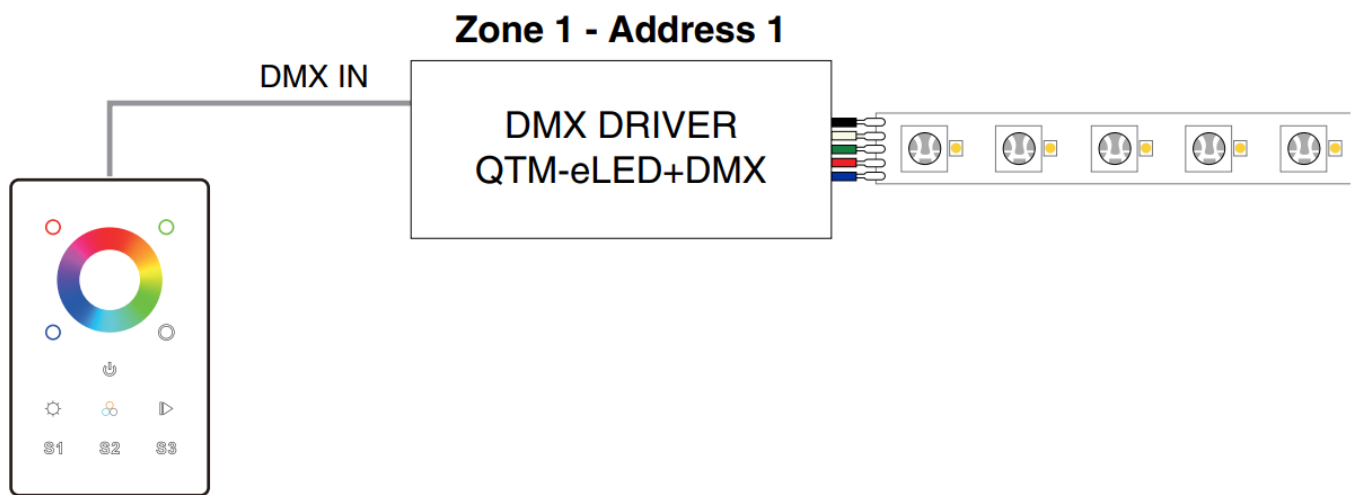
4. Connect all components and put the power adapter into the junction box. Connect DMX GND to earth GND.



5. Snap the upper portion of the touch panel into the baseplate and then snap the bottom into place.



6. Connect to power supply.



© 2022 Q-Tran Inc. All rights reserved | 155 Hill St. Milford, CT 06460 | 203-367-8777 | [sales@q-tran.com](mailto:sales@q-tran.com) | [www.q-tran.com](http://www.q-tran.com)

Specification subject to change. Rev-07-28-22

## Documents / Resources

	<p><a href="#">TRAN LED DMX-US1 DMX Controller</a> [pdf] Instruction Manual DMX-US1 DMX Controller, DMX-US1, DMX Controller</p>
--	---

## References

- [RealNames | A more meaningful email address](#)
- [LED Lighting Systems, Linear LED Lights, LED transformers | Q-Tran](#)

[Manuals+](#).