



TRAMEX TREMS-5 Remote Environmental Monitoring System Owner's Manual

[Home](#) » [TRAMEX](#) » TRAMEX TREMS-5 Remote Environmental Monitoring System Owner's Manual 

Contents

- [1 TRAMEX TREMS-5 Remote Environmental Monitoring System](#)
- [2 Product Information](#)
- [3 Specifications](#)
- [4 Product Usage Instructions](#)
- [5 TRAMEX REMOTE ENVIRONMENTAL MONITORING SYSTEM TREMS-5](#)
- [6 TRAMEX CLOUD SENSOR – SPECIFICATIONS & MEASURING RANGE](#)
- [7 Documents / Resources](#)
 - [7.1 References](#)



TRAMEX TREMS-5 Remote Environmental Monitoring System



Product Information

The Tramex Remote Environmental Monitoring System TREMS-5 is a comprehensive monitoring system that allows users to remotely monitor and track environmental conditions. The kit includes 5 CS-RHTA Tramex Cloud Sensors, 1 Tramex Cloud Station, 1 Heavy Duty Protective Carry Case, Tramex Cloud Software Monitoring platform (Tablet not included), and Antennae for Cloud Station.

Product Code: TREMS-5

Specifications

- **Tramex Cloud Sensor – Specifications & Measuring Range:**

- Size: 100mm x 90mm x 35mm (3.94 x 3.54 x 1.38)
- Weight: 100g (3.53oz)
- Power: Built-in CR123A battery with up to 15-year lifespan
- Construction: ABS enclosure
- Included: Wall Mounting

- **Relative Humidity Sensor Specifications:**

- Range: 0 to 100%RH
- Resolution: 0.1% over the complete range
- Drift: [No information provided]

Product Usage Instructions

To get started with the Tramex Remote Environmental Monitoring System TREMS-5, follow these steps:

1. Unpack the kit and ensure you have all the components mentioned in the kit contents list.
2. Scan the QR code on the back of each Tramex Cloud Sensor to easily register them in your Cloud account.
3. Click 'register' in your Cloud account to complete the registration process.
4. Mount the Tramex Cloud Station in a suitable location for optimal signal reception.
5. Install the Tramex Cloud Software Monitoring platform on a tablet (not included).
6. Launch the Tramex Cloud Software Monitoring platform and log in to your Cloud account.

7. You can now monitor and track environmental conditions using the Tramex Remote Environmental Monitoring System TREMS-5.

TRAMEX REMOTE ENVIRONMENTAL MONITORING SYSTEM TREMS-5

The Tramex Remote Environmental Monitoring System has been designed and developed by Tramex for professionals who depend on the most accurate, reliable, real-time building environment temperature and relative humidity readings using state of the art technology to respond quickly to environmental changes and notify users. The TREMS-5 comprises 5 CS-RHTA Tramex Cloud Sensors and a Tramex Cloud Station router. Multiple Sensors can be used with one Station and additional sensor Accessory Packs are also available. Registration and on-site set-up is simple using a QR code check-in procedure. The on-site Sensors, with battery life of up to 15 years, transmit relative humidity, temperature ($^{\circ}\text{C}$ and $^{\circ}\text{F}$), dew point and grains per pound / grams per kilo readings wirelessly via the Tramex Cloud Station enabling remote monitoring of up to 200 on-site Sensors on the Tramex Cloud platform.

Tramex Cloud is a secure platform to store and report your moisture, temperature and relative humidity measurements, get notified of adverse conditions and quickly monitor status from any browser. There are no subscription fees and there is free data with the Tramex Remote Environmental Monitoring System.



Product Code: TREMS-5

KIT CONTENTS

- 5 x CS-RHTA Tramex Cloud Sensors
- 1 x Tramex Cloud Station
- 1 x Heavy Duty Protective Carry Case
- Tramex Cloud Software Monitoring platform (Tablet not included)
- Antennae for Cloud Station



AMBIENT
RH, T, DP, g/kg



TRAMEX CLOUD



ONLINE INFO

TRAMEX CLOUD SENSOR – SPECIFICATIONS & MEASURING RANGE

Sensors can be easily registered by scanning the QR code on the back of the instrument and clicking 'register' in your Cloud account.



- Size: 100mm x 90mm x 35mm (3.94" x 3.54" x 1.38")
- Weight: 100g (3.53oz)
- Power: Built in CR123A battery with up to 15 year lifespan
- Construction: ABS enclosure
- Included: Wall Mounting
- Transmission Range: Over 3kms line-of-sight
- Communication Frequency: Multiple readings per hour
- Identification: Items individually coded for ease of install and logging identification

RELATIVE HUMIDITY SENSOR SPECIFICATIONS

- Exceptional Accuracy: $\pm 1.5\%RH$ Range 0% to 80%RH $\pm 2.0\%RH$ Range 80% to 99%RH (@ 25°C (77°F))
- Range: 0 to 100%RH
- Resolution: 0.1% over the complete range
- Drift: $<0.25\%RH$ per year

TEMPERATURE SENSOR SPECIFICATIONS:

- Exceptional Accuracy: $\pm 0.1^\circ C$ Range 20°C to 60°C ($\pm 0.1^\circ F$ Range 68°F to 140°F)

- Range: -40°C to 125°C (-40°F to 257°F)
- Sensor Protection: PTFE Film protects sensor opening from water & dust
- Drift: <0.03°C (0.04°F) per year

TRAMEX CLOUD STATION

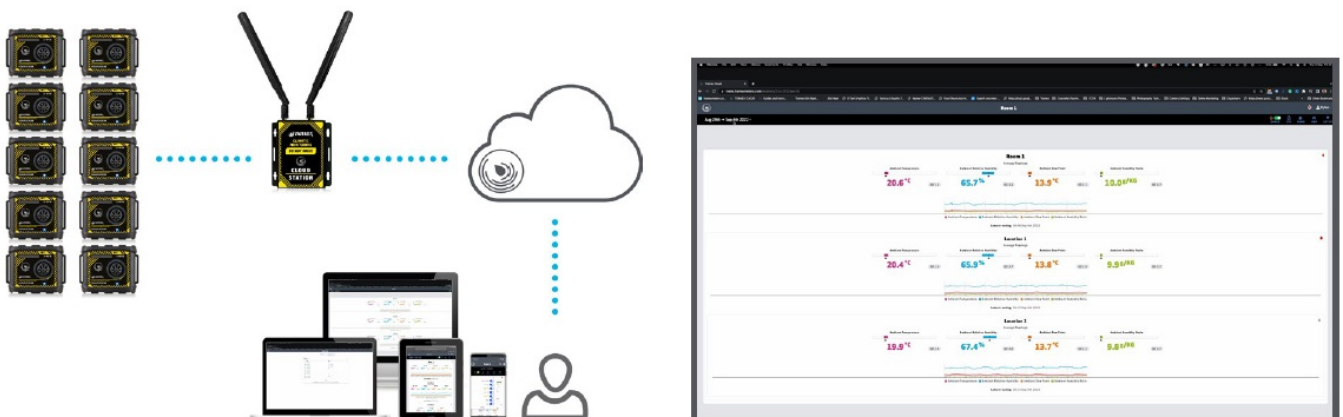
The Cloud Station can be easily registered by scanning the QR code on the back of the instrument and clicking 'register' in your Cloud account



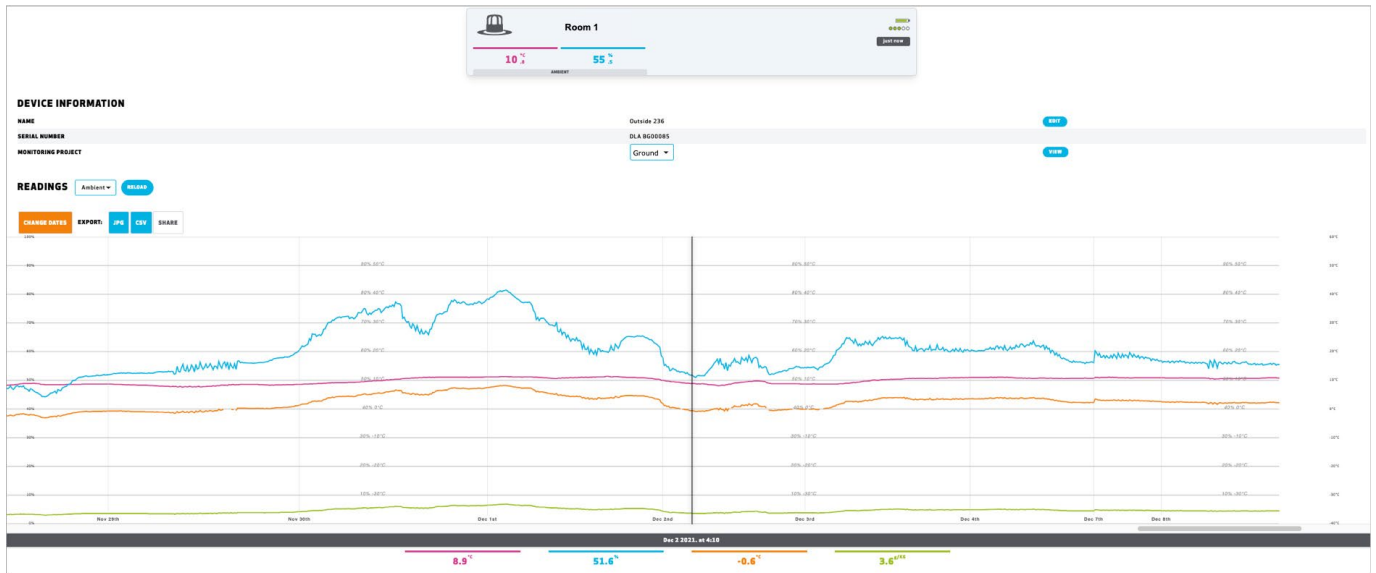
- Size: 130mm x 115mm x 30mm (5.12" x 4.53" x 1.19")
- Weight: 270g (9.5oz)
- Power: Universal AC Power Adapter
- Construction: Wall-mountable Industrial Aluminium
- Frequency: Region Specific frequency available
- Security: WPA2-PSK encryption, no unwarranted telemetry/tracking.

TRAMEX CLOUD

The Tramex Cloud stores all your project details and logging information securely and allows for remote monitoring



Detailed logging charts



Data is stored free of charge for a period of 2 years, after which, following our data retention policy, you will need to download it.


KIT SPECIFICATIONS

- Size: 43.5cm x 36cm x 14cm (17.1" x 14.2" x 5.5")
- Power: 5 x CR123A 3-volt batteries (included)
- Weight: 3kg (6.6lbs)

Email: sales@tramexmeters.com

Website: www.tramexmeters.com

Documents / Resources



[TRAMEX TREMS-5 Remote Environmental Monitoring System](#) [pdf] Owner's Manual
TREMS-5, TREMS-5 Remote Environmental Monitoring System, TREMS-5 Monitoring System, Remote Environmental Monitoring System, Monitoring, Monitoring System, Remote Monitoring System, Environmental Monitoring System

References

-  [Tramex Moisture Meters | Moisture and Humidity Detection](#)