



# TRAMEX AP-TREMS-Xtra Environmental Monitoring System User Manual

[Home](#) » [TRAMEX](#) » TRAMEX AP-TREMS-Xtra Environmental Monitoring System User Manual 

## Contents

- [1 TRAMEX AP-TREMS-Xtra Environmental Monitoring System](#)
- [2 Product Usage Instructions](#)
- [3 KIT CONTENTS](#)
- [4 SPECIFICATIONS](#)
- [5 RELATIVE HUMIDITY SENSOR](#)
  - [5.1 TRAMEX CLOUD](#)
- [6 KIT SPECIFICATIONS](#)
- [7 Documents / Resources](#)
  - [7.1 References](#)



## TRAMEX AP-TREMS-Xtra Environmental Monitoring System



## Product Information

The Tramex Remote Environmental Monitoring System Accessory Pack AP-TREMS-Xtra is a comprehensive kit designed to enhance the capabilities of the Tramex Cloud Monitoring System. It includes various sensors and accessories to monitor and measure environmental conditions.

## Kit Contents

1. 5 x CS-RHTX Tramex Cloud Sensors
2. 5 x External Relative Humidity probes for in-situ
3. 1 x Heavy Duty Protective Carry Case
4. Tramex Cloud Software Monitoring platform (Tablet not included)

## Specifications

Tramex Cloud Sensor – Specifications & Measuring Range:

- Size: 100mm x 90mm x 35mm (3.94 x 3.54 x 1.38 inches)
- Weight: 100g (3.53oz)
- Power: Built-in CR123A battery with up to 15-year lifespan
- Construction: ABS enclosure
- Included: Wall Mounting

## Relative Humidity Sensor Specifications:

- Range: 0 to 100%RH
- Resolution: 0.1% over the complete range
- Drift: [no information provided]

**Product Code:** AP-TREMS-Xtra

**Revision:** AP-TREMS-Xtra EU 10/22 REV.1.1

## Product Usage Instructions

1. Registering Sensors:
  - Scan the QR code on the back of the instrument.
  - Click “register” in your Cloud account.
2. Mounting the Tramex Cloud Sensors:
  - Use the included wall mounting accessories to securely mount the sensors in desired locations.
3. Using the Tramex Cloud Software Monitoring Platform:
  - Note: A tablet is required to use the software.
  - Install the Tramex Cloud Software Monitoring platform on your tablet.
  - Follow the software instructions to connect and monitor the sensors.

The Tramex Remote Environmental Monitoring System Xtra Accessory Pack adds more Cloud Sensors to your TREMS project. The AP-TREMS-Xtra comprises 5 CS-RHTX Tramex Cloud Sensors as well as 5 external Relative Humidity probes. These external probes extend the benefits of the remote monitoring system allowing for in-situ readings within building structures cavities in walls and ceilings and in situ RH readings in concrete. Multiple Sensors can be used with one Station. Registration and on-site set-up is simple using a QR code check-in procedure. The on-site Sensors, with battery life of up to 15 years, transmit relative humidity, temperature ( $^{\circ}\text{C}$  and  $^{\circ}\text{F}$ ), dew point and grains per pound / grams per kilo readings wirelessly via the Tramex Cloud Station enabling remote monitoring of up to 200 on-site Sensors on the Tramex Cloud platform. Tramex Cloud is a secure platform to store and report your moisture, temperature and relative humidity measurements, get notified of adverse conditions and quickly monitor status from any browser. There are no subscription fees and there is free data with the Tramex Remote Environmental Monitoring System.

Product Code: AP-TREMS-Xtra

## KIT CONTENTS

1. 5 x CS-RHTX Tramex Cloud Sensors
2. 5 x External Relative Humidity probes for in-situ
3. 1 x Heavy Duty Protective Carry Case
4. Tramex Cloud Software Monitoring platform (Tablet not included)



**AMBIENT**  
RH, T, DP, g/kg



**IN SITU**  
RH, T, DP, g/kg



**TRAMEX CLOUD**



**ONLINE INFO**

## SPECIFICATIONS

## TRAMEX CLOUD SENSOR – SPECIFICATIONS & MEASURING RANGE

Sensors can be easily registered by scanning the QR code on the back of the instrument and clicking 'register' in your Cloud account.



- Size: 100mm x 90mm x 35mm (3.94" x 3.54" x 1.38")
- Weight: 100g (3.53oz)
- Power: Built in CR123A battery with up to 15 year lifespan
- Construction: ABS enclosure
- Included: Wall Mounting
- Transmission Range: Over 3kms line-of-sight
- Communication Frequency: Multiple readings per hour
- Identification: Items individually coded for ease of install and logging identification.

### RELATIVE HUMIDITY SENSOR SPECIFICATIONS

- Exceptional Accuracy:  $\pm 1.5\%RH$  Range 0% to 80%RH  $\pm 2.0\%RH$  Range 80% to 99%RH (@ 25°C (77°F))
- Range: 0 to 100%RH
- Resolution: 0.1% over the complete range
- Drift:  $<0.25\%RH$  per year

### TEMPERATURE SENSOR SPECIFICATIONS

- Exceptional Accuracy:  $\pm 0.1^\circ C$  Range 20°C to 60°C ( $\pm 0.1^\circ F$  Range 68°F to 140°F)
- Range: -40°C to 125°C (-40°F to 257°F)
- Sensor Protection: PTFE Film protects sensor opening from water & dust
- Drift:  $<0.03^\circ C$  (0.04°F) per year

### RELATIVE HUMIDITY SENSOR

This 4.5" (100mm) sensor can be used for the evaluation of moisture conditions within building materials, walls and cavity structures within the building envelope. It can also be used with the Tramex Hygrohood for non-destructive Relative Humidity testing of concrete and other cementitious materials.



## RELATIVE HUMIDITY SENSOR SPECIFICATIONS

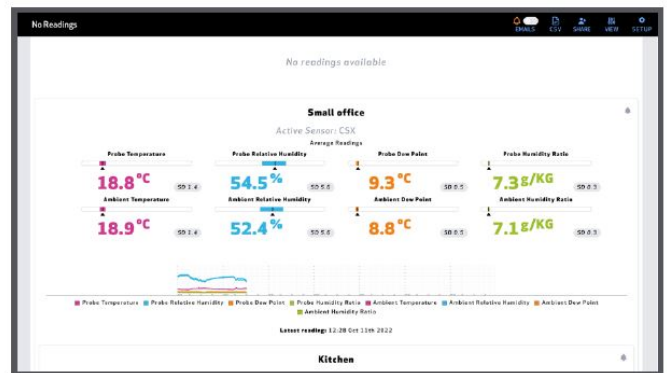
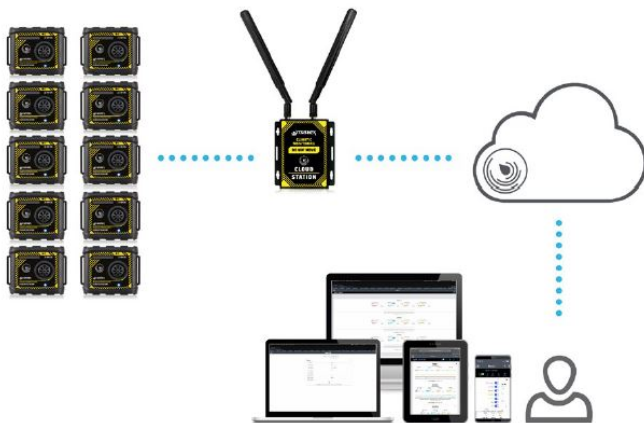
- Exceptional Accuracy:  $\pm 1.5\%RH$  Range 0% to 80%RH  $\pm 2.0\%RH$  Range 80% to 99%RH (@ 25°C (77°F))
- Range: 0 to 100%RH
- Resolution: 0.1% over the complete range
- Drift: <0.25%RH per year

## TEMPERATURE SENSOR SPECIFICATIONS:

- Exceptional Accuracy:  $\pm 0.1^\circ C$  Range 20°C to 60°C ( $\pm 0.1^\circ F$  Range 68°F to 140°F)
- Range: -40°C to 125°C (-40°F to 257°F)
- Sensor Protection: PTFE Film protects sensor opening from water & dust
- Drift: <0.03°C (0.04°F) per year

## TRAMEX CLOUD

The Tramex Cloud stores all your project details and logging information securely and allows for remote monitoring.



## Detailed logging charts



Data is stored free of charge for a period of 2 years, after which, following our data retention policy, you will need to download it.

### KIT SPECIFICATIONS

- **Size:** 43.5cm x 36cm x 14cm (17.1" x 14.2" x 5.5")
- **Power:** 5 x CR123A 3-volt batteries (included)
- **Weight:** 3.56kg (7.6lbs)

[sales@tramexmeters.com](mailto:sales@tramexmeters.com)  
[www.tramexmeters.com](http://www.tramexmeters.com)

### Documents / Resources

**TRAMEX AP-TREMS-Xtra Environmental Monitoring System** [pdf] User Manual  
AP-TREMS-Xtra Environmental Monitoring System, AP-TREMS-Xtra, Environmental Monitoring System, Monitoring System

### References

- [Tramex Moisture Meters | Moisture and Humidity Detection](#)