



traka KC-1-0156 Key-Box Key Management Systems, User Manual

[Home](#) » [traka](#) » traka KC-1-0156 Key-Box Key Management Systems, User Manual 

traka



Serial Number
Place Serial
Label Here



UK
CA

CAN ICES-3 (B)/NMB-3(B) Model: KC-1-0156

Contents

- [1 KC-1-0156 Key-Box Key Management Systems,](#)
- [2 What's in the Box?](#)
- [3 Fixing Types](#)
- [4 Assembling the PSU](#)
- [5 Securing the System to the wall](#)
- [6 Getting Started](#)
- [7 Support Information](#)
- [8 Additional Information](#)
- [9 Documents / Resources](#)
- [9.1 References](#)

KC-1-0156 Key-Box Key Management Systems,

ASSA ABLOY, the global leader in door opening solutions

Welcome

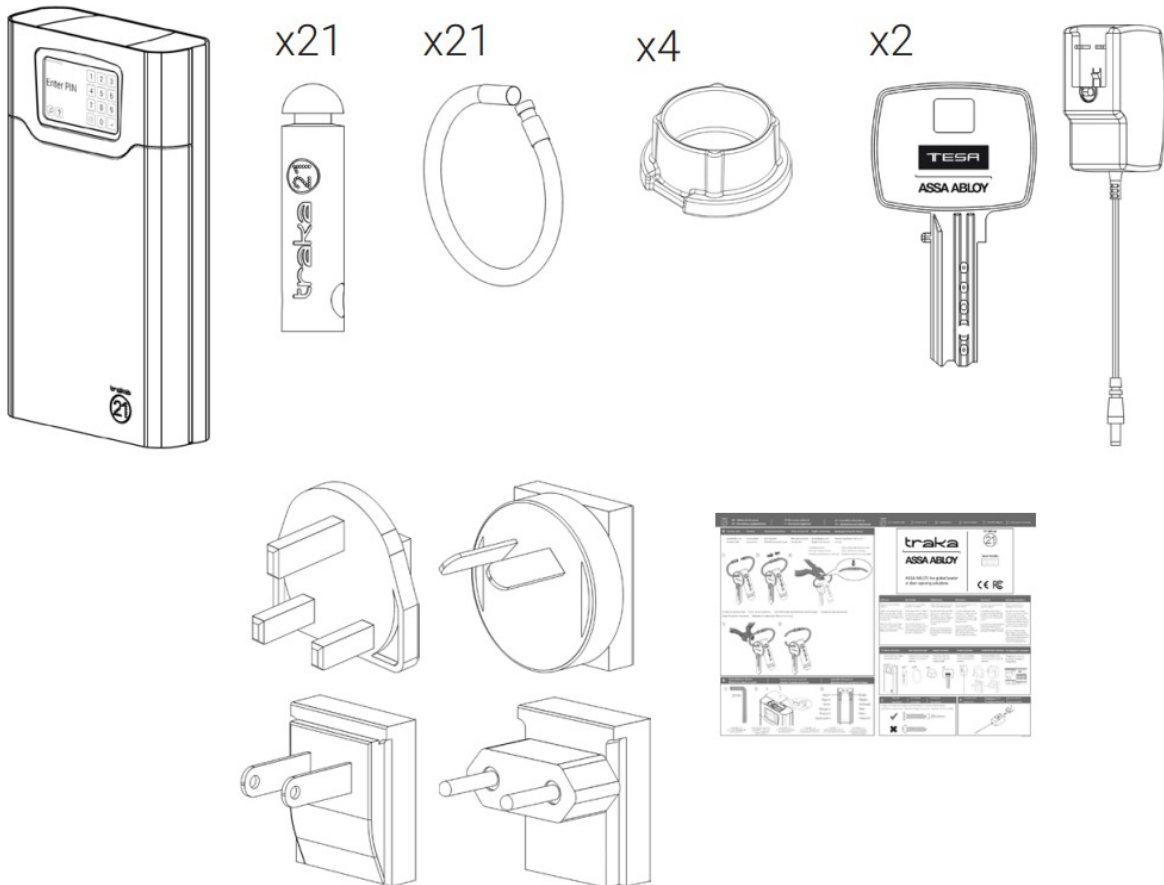
Thank you for purchasing Traka21.

Traka21's innovative plug and play system provides small to medium size businesses with the very latest in intelligent key management.

There are a few simple steps you need to take before the system is ready to use. Please follow the steps below.

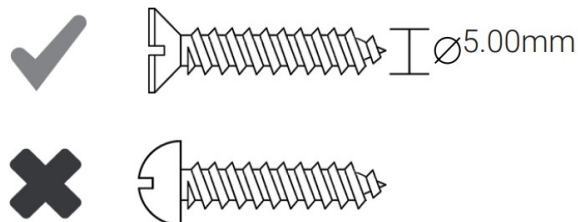
What's in the Box?

Ensure the box contains the following items.

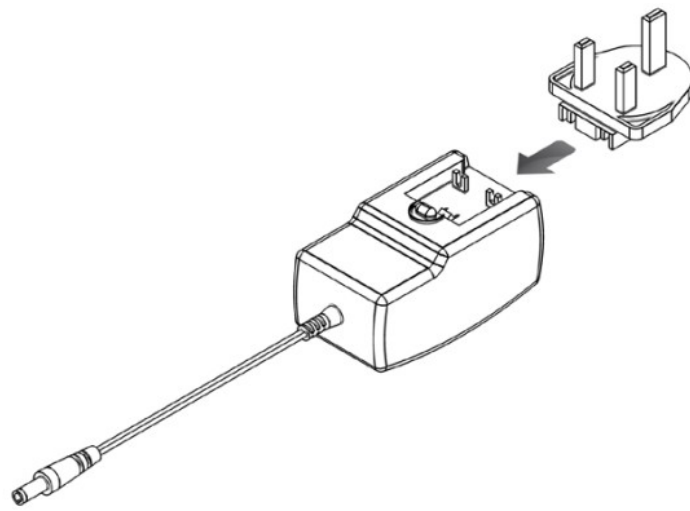


Fixing Types

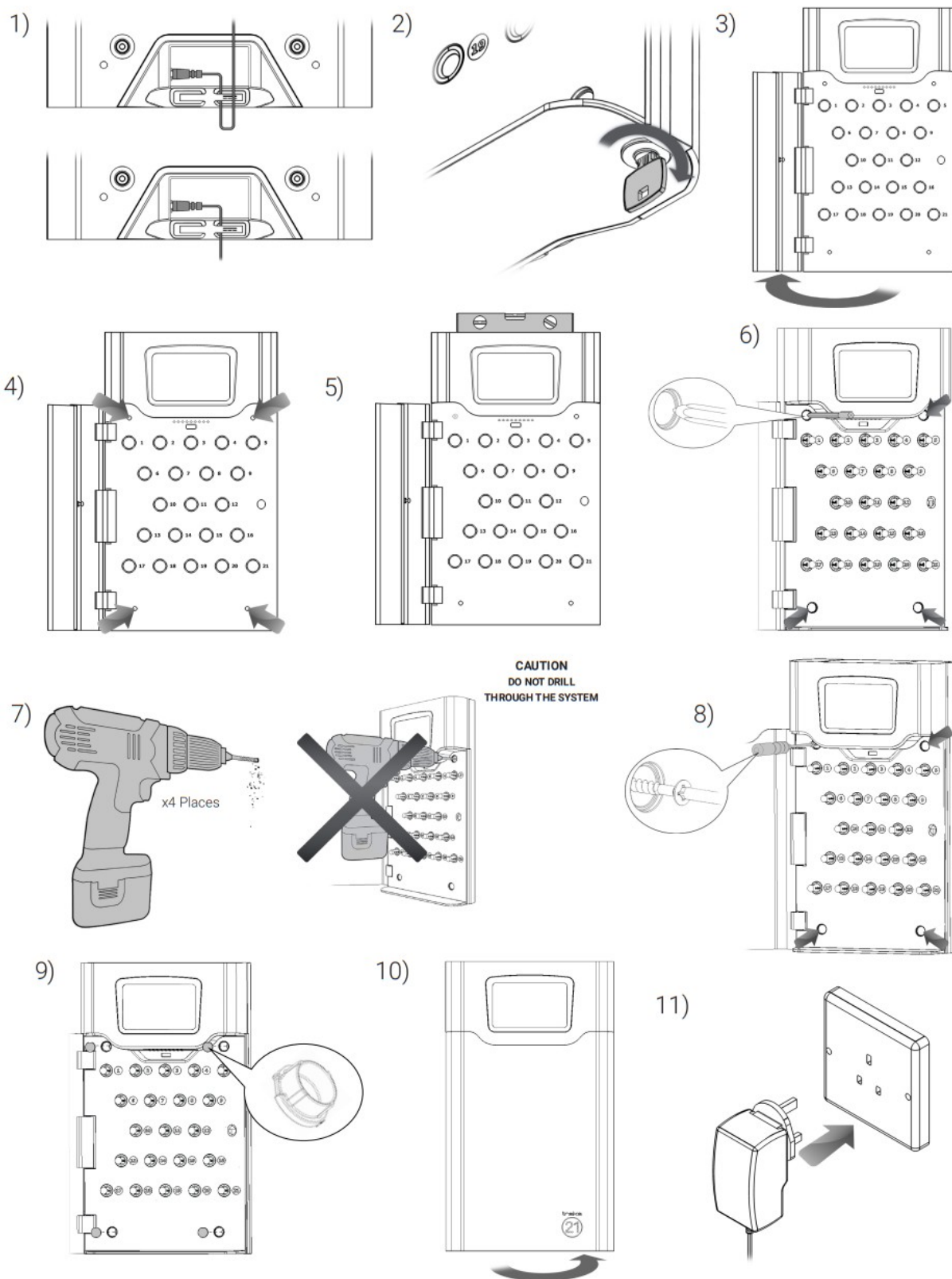
Fixings are not included.



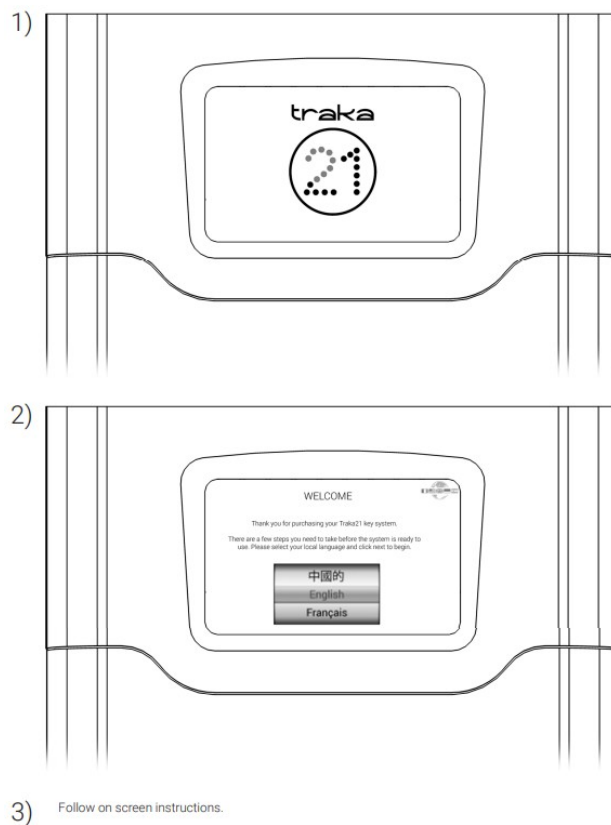
Assembling the PSU



Securing the System to the wall



Getting Started



Support Information

For technical support, or general information please visit the Traka21 website.

www.traka21.com

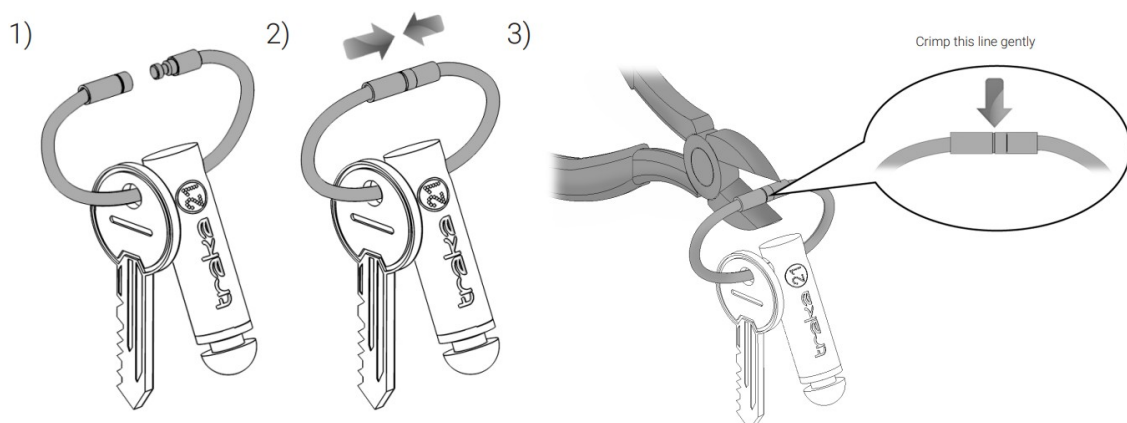
«The USA Federal Communications Commission (FCC) and the Industry Canada (IC) Warning Text can be found in the user manual. You can download the user manual by using this link <https://www.traka.com/global/en/solutions/electronic-key-management-systems/traka21/user-guide>»

The global leader in door opening solutions.

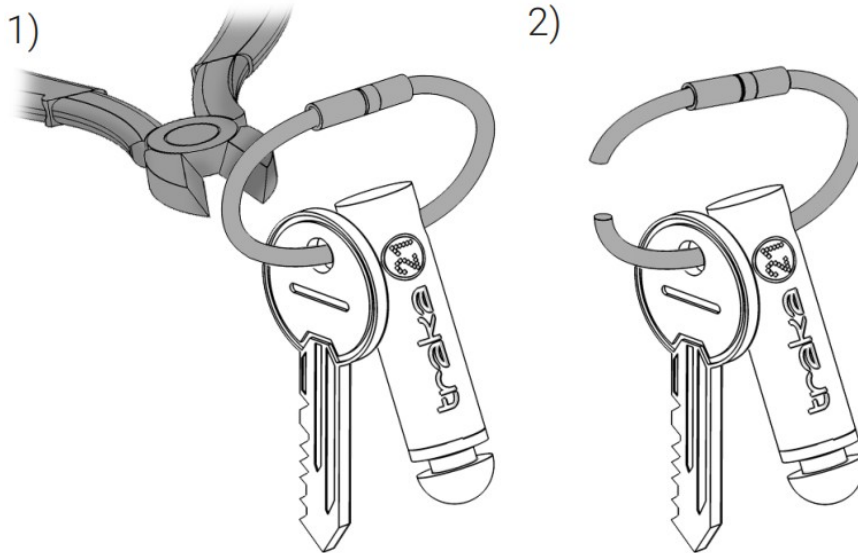
Additional Information

A Security Seal

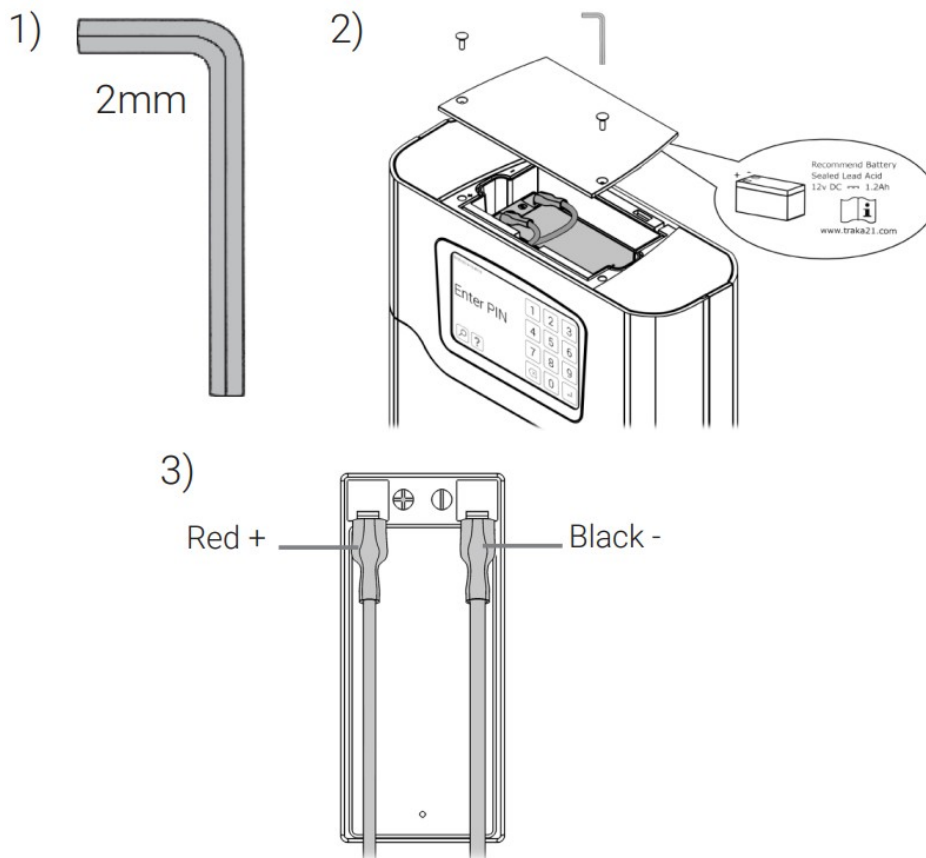
Assembling the Security Seal.



Cutting the Security Seal.



B Optional Backup Battery



YUASA NP 1.2-12
12V, 1.2AH Valve Regulated Lead Acid Battery.



ASSA ABLOY

Documents / Resources



[traka KC-1-0156 Key-Box Key Management Systems](#), [pdf] User Manual
KC-1-0156 Key-Box Key Management Systems, KC-1-0156, Key-Box Key Management Systems, Key Management Systems, Management Systems, Systems

References

-  [Traka21 | Electronic key management systems | traka](#)
-  [User guide & downloads | traka](#)
- [User Manual](#)

Manuals+, Privacy Policy

This website is an independent publication and is neither affiliated with nor endorsed by any of the trademark owners. The "Bluetooth®" word mark and logos are registered trademarks owned by Bluetooth SIG, Inc. The "Wi-Fi®" word mark and logos are registered trademarks owned by the Wi-Fi Alliance. Any use of these marks on this website does not imply any affiliation with or endorsement.