

TRADITION
ATD7
PIVOT
PORTABLE
LED
TABLE
LAMP



Tradition ATD7 Pivot Portable LED Table Lamp Instruction Manual

[Home](#) » [Tradition](#) » Tradition ATD7 Pivot Portable LED Table Lamp Instruction Manual 

Contents

- [1 Tradition ATD7 Pivot Portable LED Table Lamp](#)
- [2 Product Information](#)
- [3 Product Usage Instructions](#)
- [4 Contents](#)
- [5 Tools needed](#)
- [6 Safety precautions](#)
- [7 Cleaning instructions](#)
- [8 Installation Instructions](#)
- [9 Replacing batteries](#)
- [10 Frequently Asked Questions](#)
- [11 Documents / Resources](#)
 - [11.1 References](#)
- [12 Related Posts](#)

TRADITION

Tradition ATD7 Pivot Portable LED Table Lamp



Product Information

Specifications

- **Product Name:** Pivot ATD7 & Tradition 2023
- **Designed by:** &Tradition in 2023
- **Light Bulb:** LED G4 3W
- **Power Source:** Rechargeable batteries

Product Usage Instructions

Safety Precautions

- Dispose of plastic bag from packaging immediately and keep out of reach of children.
- Indoor use only; can be taken outdoors but must be stored inside.
- Avoid placing the USB cable where it can be a trip hazard or within reach of children.
- Dispose of batteries according to local environmental laws.
- Consult a qualified electrician if in doubt.

Cleaning Instructions

- Wipe the shade surface with a dry cloth.
- Avoid abrasive cleaning tools and strong cleaning agents.

Installation Steps

1. **Step 1:** Remove plastic slip to activate the battery. No need to open the battery compartment.
2. **Step 2:** Insert the LED light bulb, lower the shade onto the base, and turn clockwise to install.
3. **Step 3:** Charge the lamp battery by connecting the magnetic USB cable to a power supply.

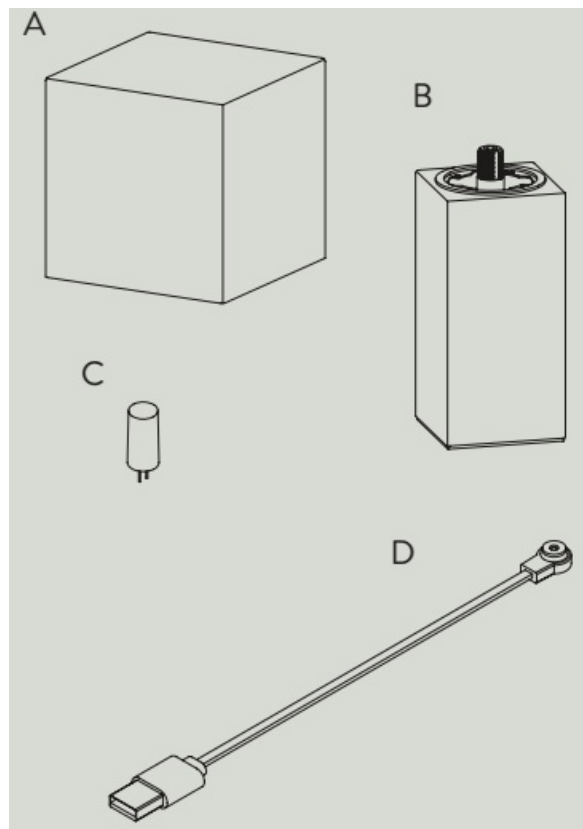
Battery Replacement Steps

1. **Step 1:** Remove the pad underneath and unscrew the four screws to access the battery compartment.
2. **Step 2:** Unscrew the screw in the battery compartment and remove the lid.
3. **Step 3:** Replace the batteries ensuring correct polarity. Use official rechargeable batteries from &Tradition.

Congratulations on your new Pivot lamp, designed in 2023 by &Tradition. We hope that you will enjoy using this product. Please follow these instructions to ensure correct installation. If you have any questions or comments, please do not hesitate to contact us by mail at: info@andtradition.com

Please read these instructions carefully and keep them for future reference to ensure the product is used correctly. For your own safety, please read each step of this instruction manual before using the product. &Tradition is not responsible for any faults or damage caused by not following these instructions correctly. Do not modify this product in any way.

Contents



- **A** Lamp shade
- **B** Lamp base with battery compartment
- **C** LED G4 3W light bulb
- **D** Magnetic USB cable

Tools needed

- Screwdriver (for replacing batteries)

Safety precautions

- Dispose of plastic bag from packaging immediately and keep out of reach of children.
- This lamp is for indoor use only. It can be taken outdoors, but must be kept and stored inside.
- Do not place the USB cable within reach of small children or anywhere there is a risk of it becoming a trip hazard.
- Batteries must be disposed of according to local environmental laws for waste disposal.
- Consult a professionally qualified electrician if in any doubt.
- Keep product out of reach of children.

Cleaning instructions

- Wipe surface of the shade with a dry cloth.
- Do not use any abrasive cleaning tools such as steel wool, scouring sponges or stiff brushes.
- Never use strong cleaning agents such as white spirit, turpentine, household glass cleaner or cellulose thinners.

For indoor use only

- **Input** 5.0V 2A cable G4 Max 3 Watt dimmable LED bulb 2 × Rechargeable &Tradition batteries
- **Charging time:** 11 hours
- **Operating time on highest** setting: 17 hours

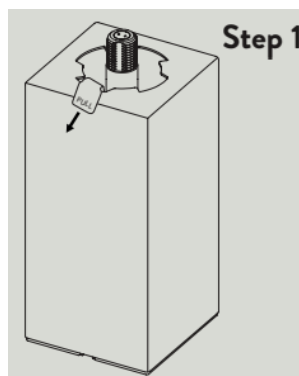
&Tradition will not accept any responsibility for any accidents or injuries that occur due to incorrect USB cable input. The battery must be removed from the light before it is scrapped; the appliance must be disconnected from the supply mains when removing the battery; the battery must be disposed of safely.

For further information or inquiries, please do not hesitate to contact &Tradition by mail on info@andtradition.com.

Installation Instructions

• Step 1

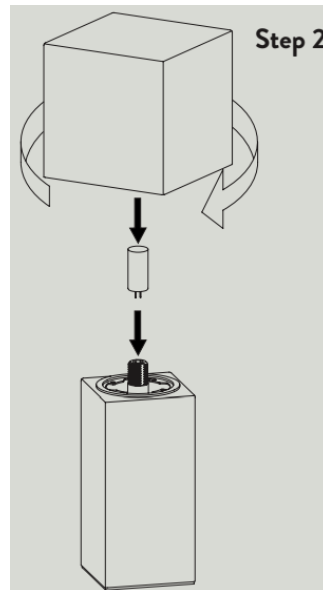
Remove plastic slip to activate the battery. You do not need to open the battery compartment.



• Step 2

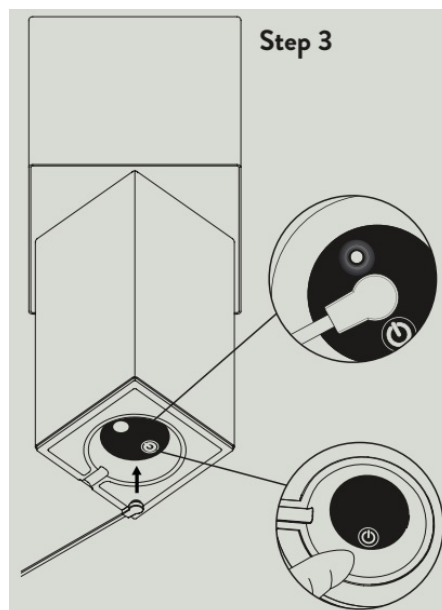
Insert the LED light bulb.

Carefully lower the shade onto the base and turn clockwise to install. Make sure to turn the shade until it cannot be turned anymore, whereby the shade will be turned 45 degrees.



- **Step 3**

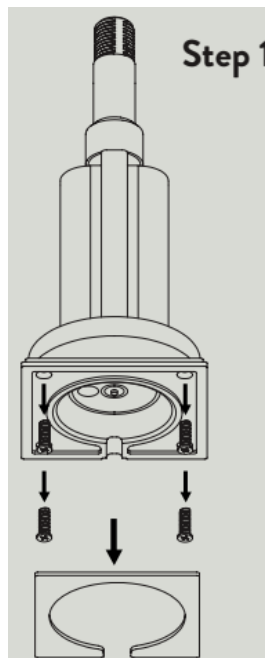
Before use, the battery in the lamp needs to be charged. Plug the magnetic USB cable into the bottom of the base and connect the USB cable to a power supply



Replacing batteries

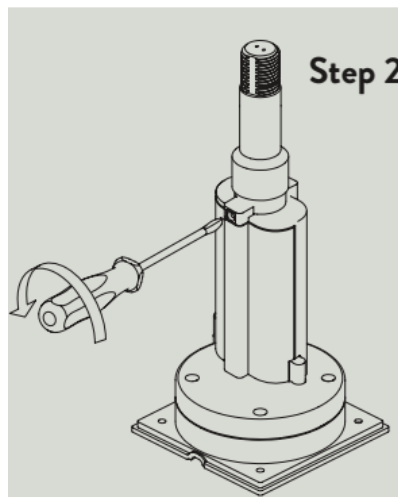
- **Step 1**

To replace the batteries, start by removing the pad underneath and unscrew the four screws. Remove the battery compartment from the lamp exterior.



- **Step 2**

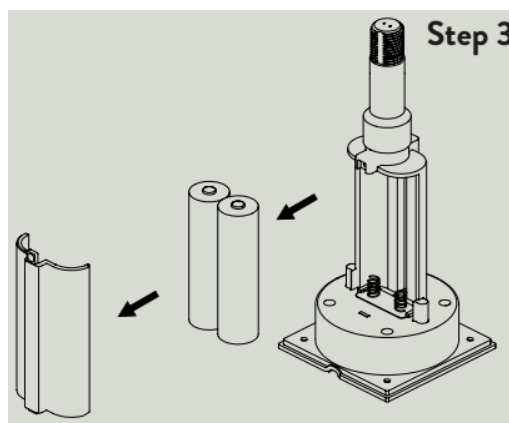
Unscrew the screw in the battery compartment by turning anticlockwise and remove the lid.



- **Step 3**

Take out the batteries and replace it with new batteries. Correctly place the batteries by turning the plus and minus pole as stated in the battery compartment.

Be sure to mount the lid gently by not overturning the screw in the threading.



Remember to only use official rechargeable batteries from &Tradition.

Frequently Asked Questions

Q: Can I use non-rechargeable batteries in the lamp?

A: No, only official rechargeable batteries from &Tradition should be used to avoid damage to the product.

Q: Can the lamp be used outdoors?

A: The lamp is designed for indoor use only. It can be taken outdoors temporarily but should be stored indoors.

Q: How do I clean the lamp shade?

A: Use a dry cloth to wipe the surface of the shade. Avoid using abrasive tools or strong cleaning agents.

Documents / Resources

| | |
|---|--|
|  | <p>Tradition ATD7 Pivot Portable LED Table Lamp [pdf] Instruction Manual</p> <p>ATD7 Pivot Portable LED Table Lamp, Pivot Portable LED Table Lamp, Portable LED Table Lamp, LED Table Lamp, Table Lamp, Lamp</p> |
|---|--|

References

- [User Manual](#)

Manuals+, Privacy Policy

This website is an independent publication and is neither affiliated with nor endorsed by any of the trademark owners. The "Bluetooth®" word mark and logos are registered trademarks owned by Bluetooth SIG, Inc. The "Wi-Fi®" word mark and logos are registered trademarks owned by the Wi-Fi Alliance. Any use of these marks on this website does not imply any affiliation with or endorsement.