



# TPSERVICE SW102 Display Firmware Update App User Guide

[Home](#) » [TPSERVICE](#) » TPSERVICE SW102 Display Firmware Update App User Guide 

## Contents

- [1 TPSERVICE SW102 Display Firmware Update App](#)
- [2 Product Information](#)
- [3 Product Usage Instructions](#)
- [4 REQUIRED TOOLS AND SOFTWARE](#)
- [5 Getting Started](#)
- [6 Uploading firmware](#)
- [7 Documents / Resources](#)
  - [7.1 References](#)



**TPSERVICE SW102 Display Firmware Update App**



## Product Information

### Specifications

- **Model:** SW102 Display
- **Required Tools:** Programming cable, Battery/Power supply
- **Firmware Update Guide:** Included

## Product Usage Instructions

### Getting Started

1. Download TPSERVICE and firmware from the provided link.
2. Extract the downloaded files to access the TPSERVICE application.
3. Launch the TPSERVICE application and follow the setup instructions.
4. Create a desktop shortcut for easy access to the software.

### Uploading Firmware

#### Step 1: Connect the Programming Cable

Connect the programming cable to the battery and plug the USB end into the PC's USB port. Connect the other end of the programming cable to the main connector of the wiring harness.

#### Step 2: Choose the Display Version

Install TPSERVICE software and select SW102 as the product in the main window. Choose the COM port that appears after connecting the display and programming cable to the computer.

### Step 3: Choose the Update Firmware

Select the specific firmware file for SW102 display.

### Step 4: Connect the Display

Click Connect in the main page, then click Update after plugging in the SW102 display. Initiate the firmware update process by pressing and holding the power & menu buttons simultaneously.

### Step 5: Disconnect the Display

After update completion, click Disconnect and unplug the SW102 display.

For further assistance, contact [technical\\_support@cycmotor.com](mailto:technical_support@cycmotor.com)

### FAQ

- **Q: What should I do if I encounter issues during firmware update?**

A: If you encounter issues during firmware update, try testing different COM ports or contact technical support for assistance.

- **Q: Can I use a different power supply for the programming cable?**

A: It is recommended to use the specified battery or power supply for the programming cable to ensure proper functionality.

### REQUIRED TOOLS AND SOFTWARE



Programming cable



Wiring harness with display connector



SW102 display



TPSERVICE

Software – TPSERVICE

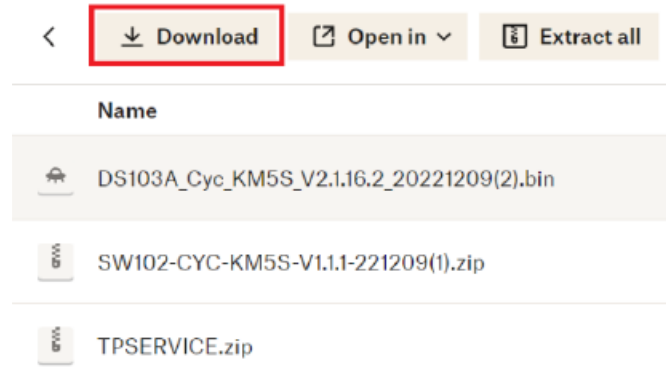


Battery/ Power supply

\*Please note that the above images are for reference only.

### Getting Started

Download TPSERVICE and firmware.



Click the link below and press “Download” button

<https://www.dropbox.com/s/k61gi2vhnsaheci/TPSERVICE%20with%20SW102%26DS103%20Firmware.zip?dl=0>.

The folder will then be downloaded in a zipped file, called “TPSERVICE with SW102&DS103 Firmware”.



Extract the downloaded zip file, TPSERVICE with zip files of SW102 & DS103 firmware.

Afterwards, extract the zip file, “TPSERVICE.zip”, inside the folder “TPSERVICE with SW102&DS103 Firmware”.

TPSERVICE	Application	43 KB	No	214 KB	81%	22/12/2021 11:00 am
-----------	-------------	-------	----	--------	-----	---------------------

Launch file, “TPSERVICE” application file, and follow the setup instructions.

TPSERVICE	2021/12/22 上午 11:00	應用程式	214 KB
-----------	---------------------	------	--------



Create a shortcut in the desktop, which links to the software, “TPSERVICE”, to make things easier.

## Uploading firmware

### • STEP 1: CONNECT THE PROGRAMMING CABLE



Connect the programming cable to the battery, then plug the USB to the PC’s USB port.

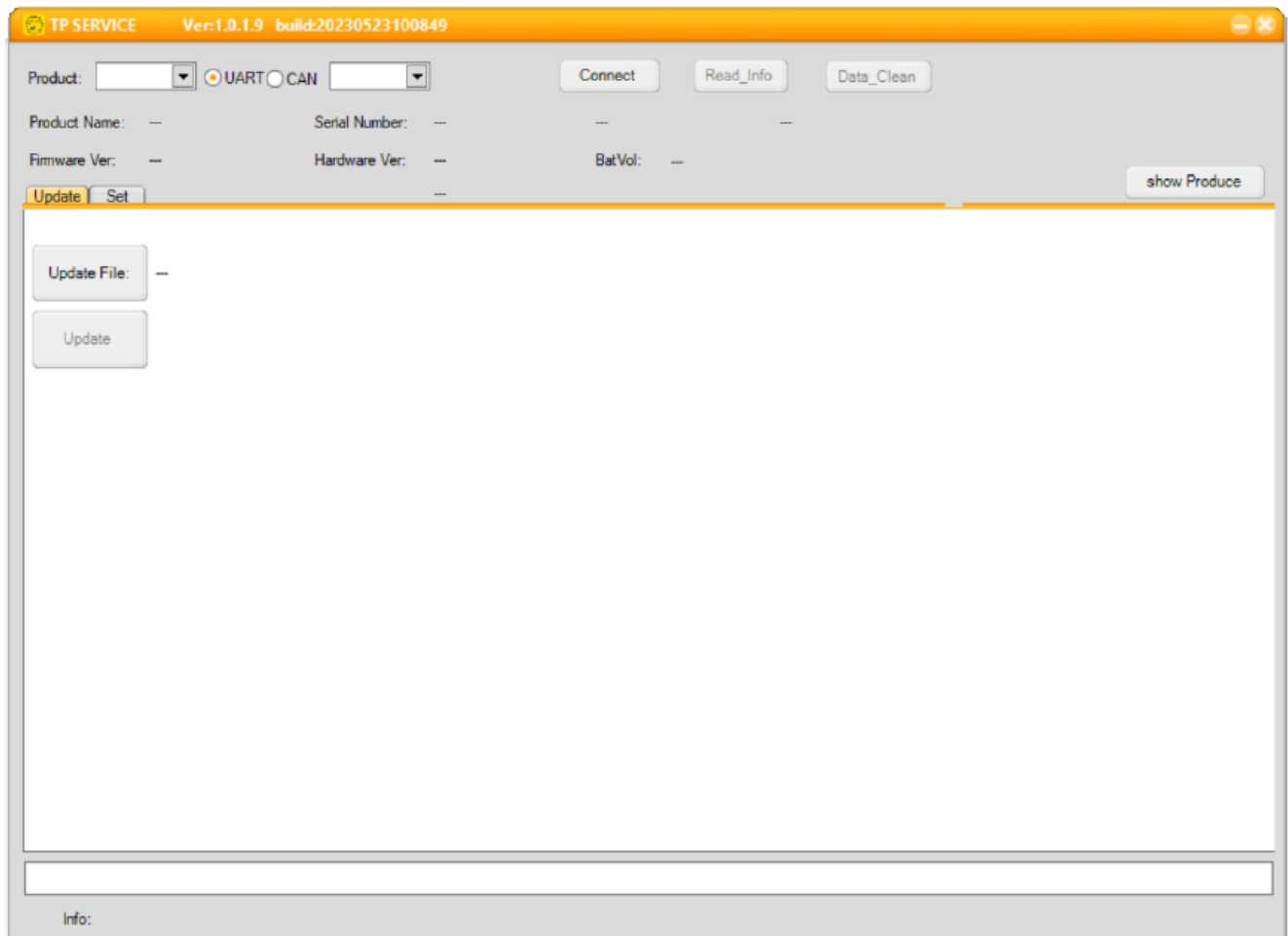


Plug the USB to the PC's USB port. The opposite end of the programming cable is connected to the main connector of the wiring harness.



Connect the SW102 display to the display connector of the wiring harness and turn on the display.

- **STEP 2: CHOOSE THE DISPLAY VERSION**

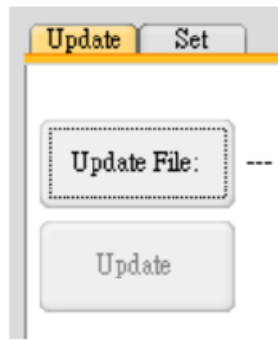


Install TPSERVICE software and double click the icon of TPSERVICE to enter the main window.

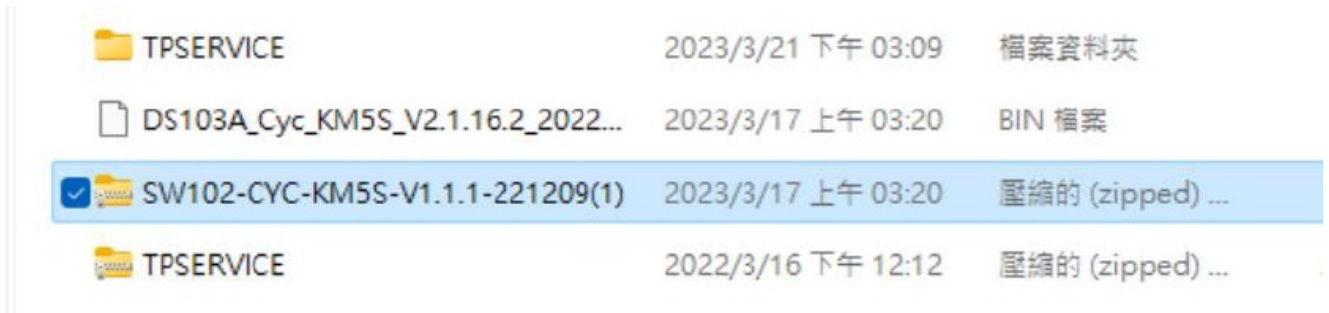


Select “SW102” for “Product” and select the COM port which appears after turning on the display and connecting the programming cable to the computer (in this case, “COM3”), under the drop-down menu. If it struggle to connect, test different COM ports.

- **STEP 3: CHOOSE THE UPDATE FIRMWARE**

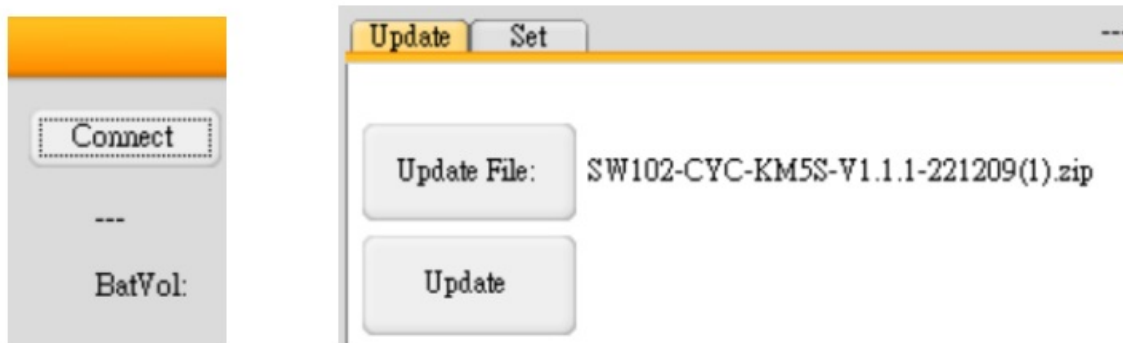


Press the button, "Update File:".



Select the file named "SW102-CYC-KM5S-V1.1.1-221209(1)".

#### • STEP 4: CONNECT THE DISPLAY



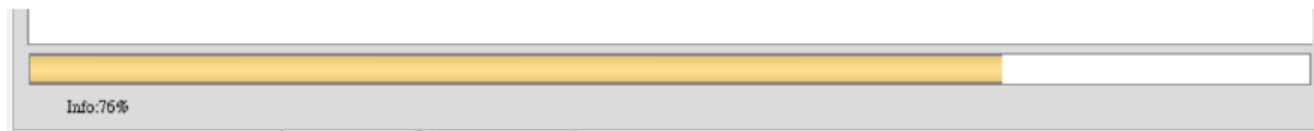
Click the "Connect" button in the main page.

(Please note that the label of this button will be changed from "Connect" to "Disconnect" immediately if the connection is success.)

Then click the "Update" button.

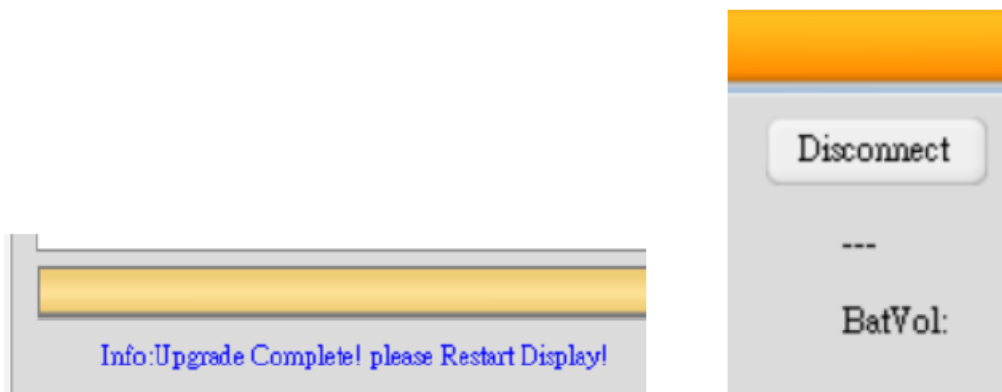


Plug the SW102 display to the display connector of the wiring harness.



Press and hold the power button & menu button at the same time for 1 second, the firmware update process will start.

- **STEP 5: DISCONNECT THE DISPLAY**




Click “Disconnect” button and unplug the SW102 display after the update is completed.

Kindly contact [technical\\_support@cycmotor.com](mailto:technical_support@cycmotor.com) if further assistance is needed.

---

## Documents / Resources

	<a href="#">TPSERVICE SW102 Display Firmware Update App</a> [pdf] User Guide SW102 Display Firmware Update App, SW102, Display Firmware Update App, Firmware Update App, Update App, App
---	---

## References

- [User Manual](#)

[Manuals+](#), [Privacy Policy](#)

This website is an independent publication and is neither affiliated with nor endorsed by any of the trademark owners. The "Bluetooth®" word mark and logos are registered trademarks owned by Bluetooth SIG, Inc. The "Wi-Fi®" word mark and logos are registered trademarks owned by the Wi-Fi Alliance. Any use of these marks on this website does not imply any affiliation with or endorsement.