

 **tp-link**
VIGI InSight
Series Fisheye
Network
Camera



tp-link VIGI InSight Series Fisheye Network Camera Installation Guide

[Home](#) » [tp-link](#) » tp-link VIGI InSight Series Fisheye Network Camera Installation Guide 

Contents

- [1 tp-link VIGI InSight Series Fisheye Network Camera](#)
- [2 Product Usage Instructions](#)
- [3 FAQ](#)
- [4 Get Ready](#)
- [5 Mount Camera](#)
- [6 Install microSD Card \(Optional\)](#)
- [7 Waterproof Cables \(Optional\)](#)
- [8 Activate and Access Camera](#)
- [9 Documents / Resources](#)
 - [9.1 References](#)



tp-link VIGI InSight Series Fisheye Network Camera



Specifications:

- **Product:** InSight Series Fisheye Network Camera
- **Model:** InSight S655I
- **Microphone:** Built-in
- **Speaker:** Built-in
- **Storage:** microSD Card slot (optional)
- **Mounting Options:** 3 options available
- **Waterproof:** Waterproof tape and cables (optional)
- **App:** TP-Link VIGI App for activation and access

Product Usage Instructions

Mounting the Camera:

When mounting the camera on a wall, point the microphone upward and the speaker downward.

Option 1:

1. Ensure you have the necessary tools and components ready from the box.
2. Mount the camera using the specified dimensions A, B, and C.
3. Refer to waterproof cables if needed.

Option 2:

1. Mount the camera using the provided microSD card and waterproof tape if needed.
2. Follow the dimensions A, B, and C for proper installation.
3. Keep the protective film on during installation and remove it before use.

Option 3:

1. Mount the camera using a 1/4-20unc screw.
2. If using a microSD card, insert it into the designated slot.

3. Keep the protective film on during installation and remove it before use.

Installing microSD Card (Optional):

If you choose to use a microSD card for storage, insert it into the designated slot on the camera.

Waterproof Cables (Optional):

If using Ethernet or power cables that require waterproofing, refer to the provided instructions for proper installation.

Activation and Access:

To activate and access the camera, use the TP-Link VIGI App.
Follow the instructions within the app for setup.

FAQ

Q: Where can I find more information and technical support?

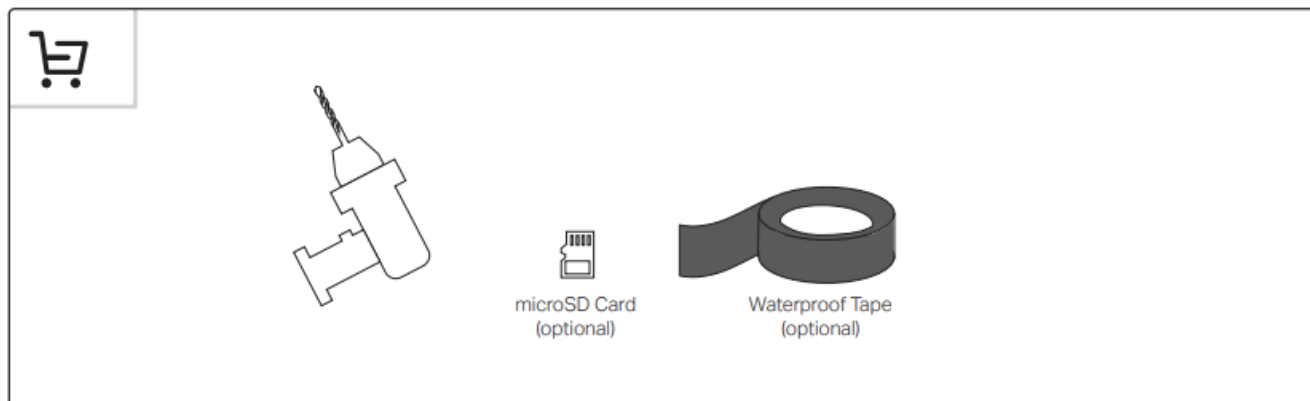
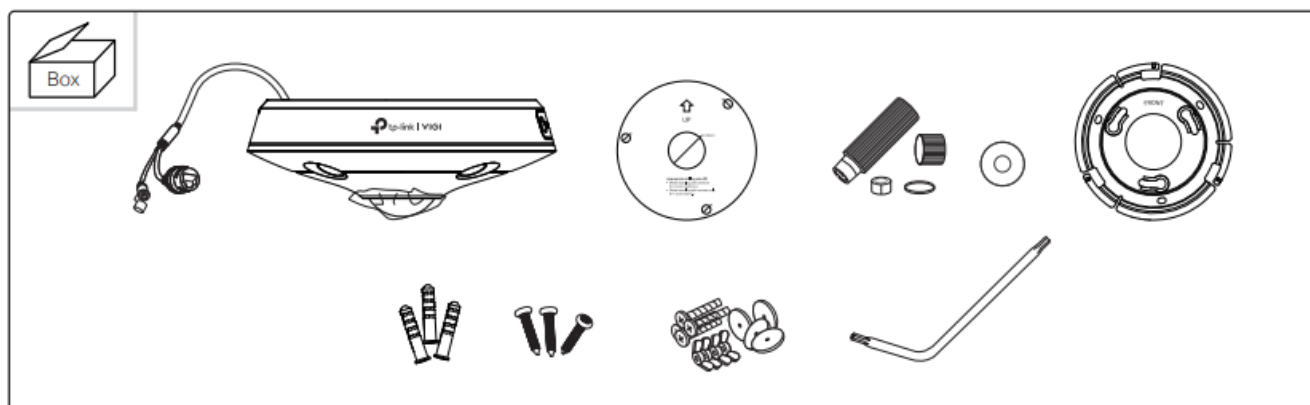
A: For technical support, replacement services, user guides, and more information, please visit [TP-Link Support](#).

InSight Series Fisheye Network Camera

*Images may differ from actual products.
InSight S655I is used for demonstration in this guide.

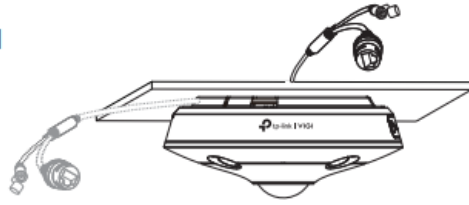
©2024 TP-Link 7106511526 REV1.0.0

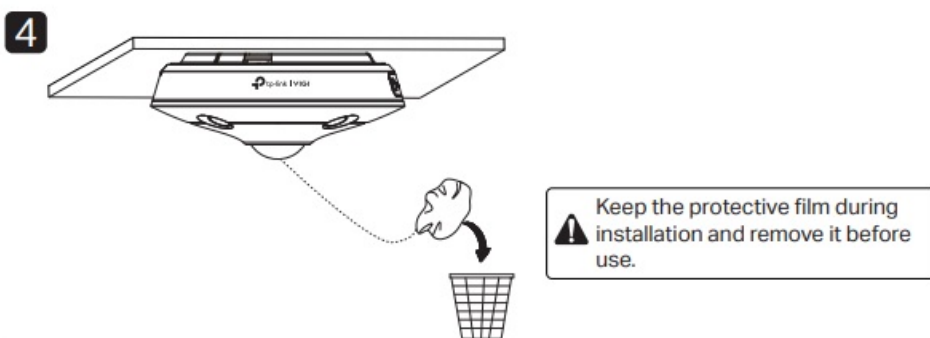
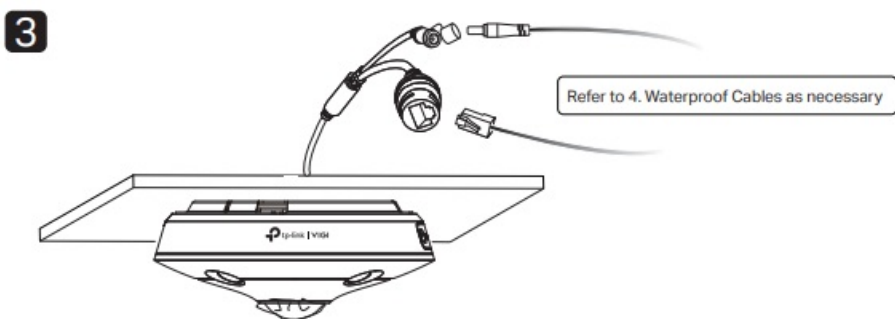
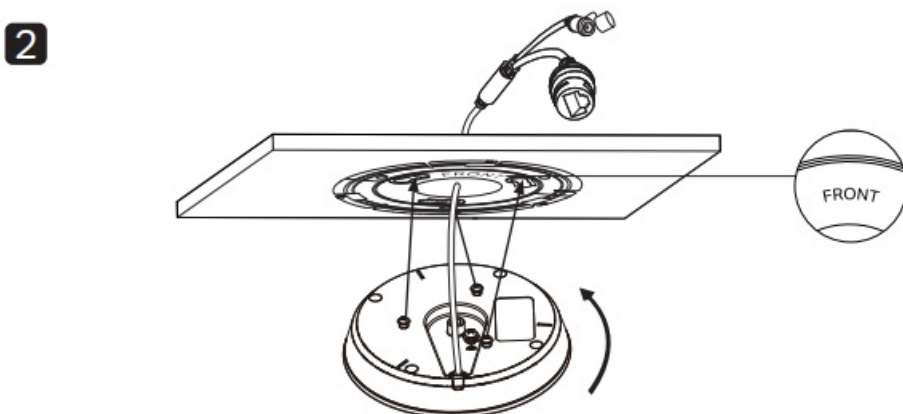
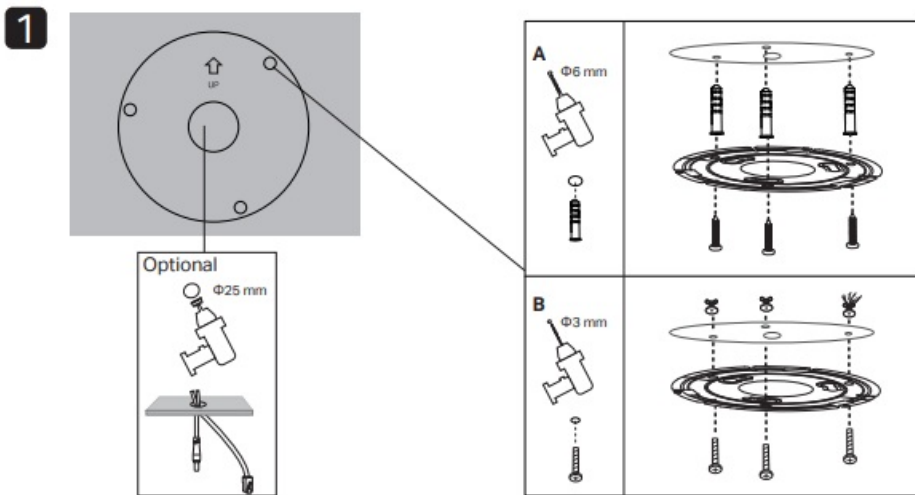
Get Ready



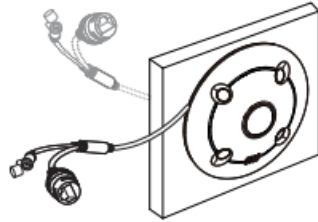
Mount Camera

Option 1

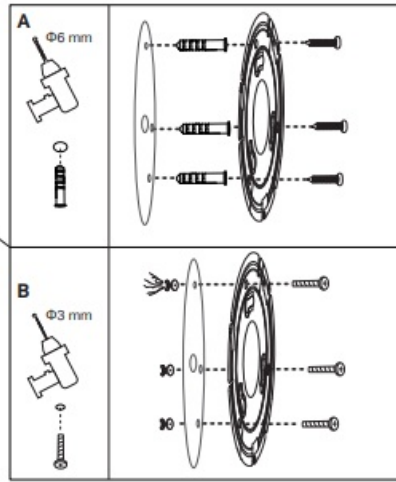
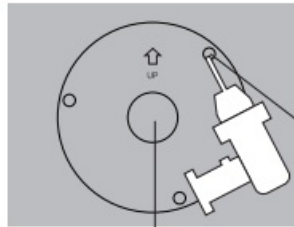




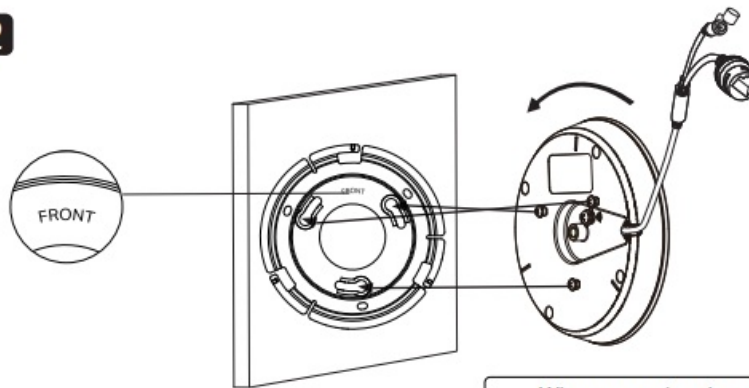
Option 2



1



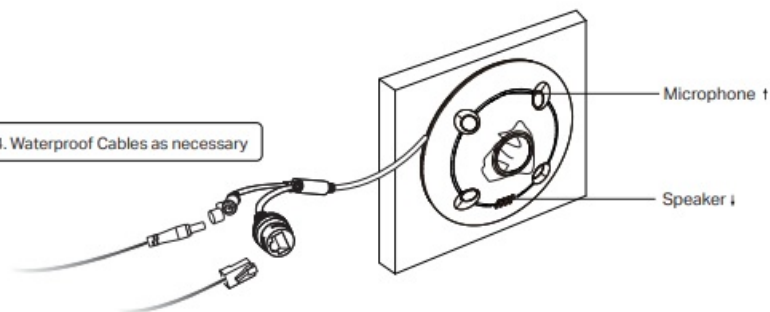
2



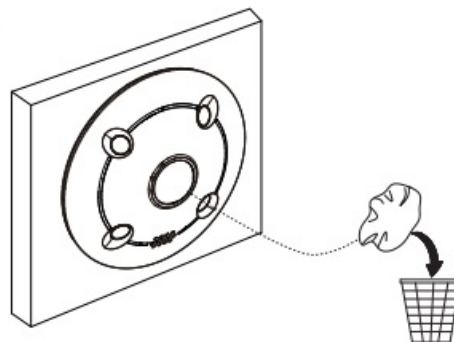
⚠ When mounting the camera on a wall, point the microphone upward and the speaker downward.

3

Refer to 4. Waterproof Cables as necessary

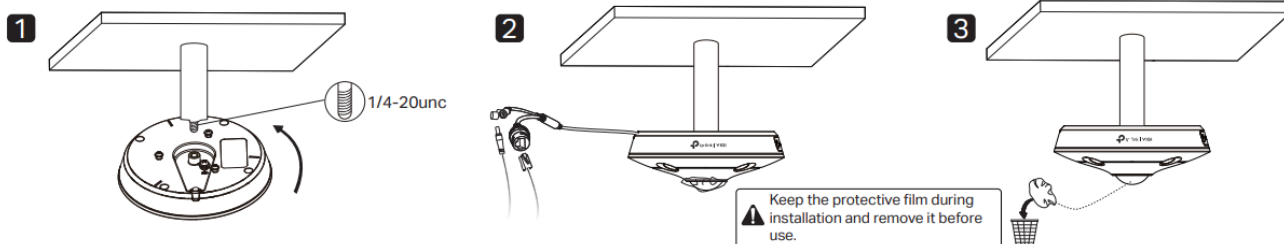


4

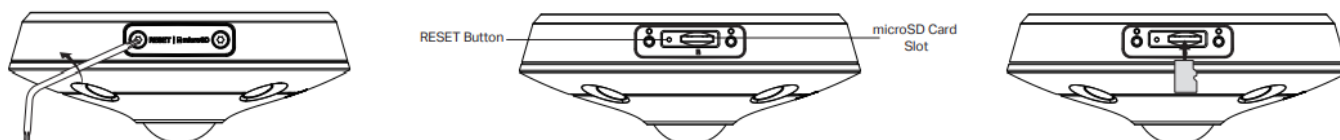


⚠ Keep the protective film during installation and remove it before use.

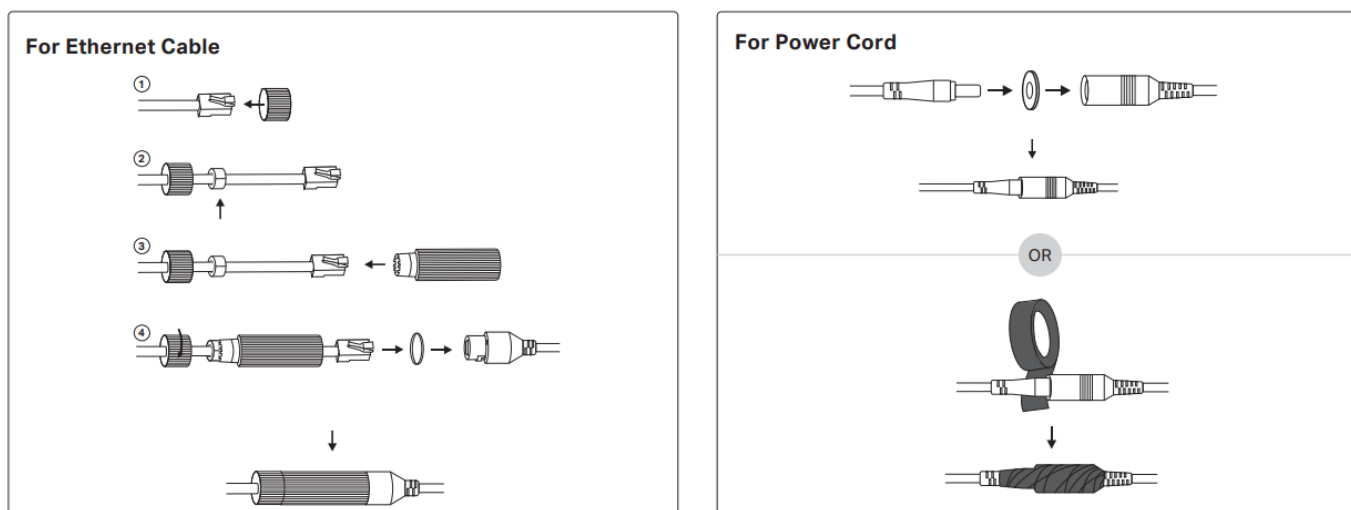
Option 3



Install microSD Card (Optional)



Waterproof Cables (Optional)



Activate and Access Camera

Via TP-Link VIGI App



More Information

- Web configuration: The default web login address is <https://192.168.0.60>.
- For more details on installation and setup, scan the following QR codes:



Setup Video



Quick Start Guide

Usage Tips:

- Make sure your power supply matches your camera. The camera also supports PoE (802.3af/at). The power source should comply with Power Source Class 2 (PS2) or Limited Power Source (LPS) of IEC 62368-1.
- Make sure that the wall is strong enough to withstand 4 times the weight of the camera and mounting bracket.
- If you are uncertain or uncomfortable performing the installation, consult a qualified electrician.

Safety Information

- Do not use any other chargers than those recommended.
- Do not use damaged charger or USB cable to charge the device.
- Do not attempt to disassemble, repair, or modify the device. If you need service, please contact us.
- Adapter shall be installed near the equipment and shall be easily accessible.
- Keep the device away from fire or hot environments. DO NOT immerse in water or any other liquid.

EU Declaration of Conformity

TP-Link hereby declares that the device is in compliance with the essential requirements and other relevant provisions of directives 2014/30/EU, 2014/35/EU, 2011/65/EU and (EU)2015/863.

The original EU Declaration of Conformity may be found at <https://www.tp-link.com/en/support/ce/>

UK Declaration of Conformity

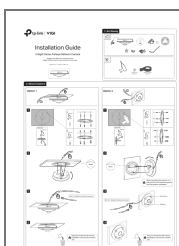
TP-Link hereby declares that the device is in compliance with the essential requirements and other relevant provisions of the Electromagnetic Compatibility Regulations 2016 and Electrical Equipment (Safety) Regulations 2016.

The original UK Declaration of Conformity may be found at <https://www.tp-link.com/support/ukca>

For technical support, replacement services, user guides, and more information, please visit <https://www.tp-link.com/support>.



Documents / Resources



[tp-link VIGI InSight Series Fisheye Network Camera](#) [pdf] Installation Guide
S655I, VIGI InSight Series Fisheye Network Camera, VIGI InSight Series, Fisheye Network Camera, Network Camera, Camera

References

- [🔗 CE Regulatory Compliance | TP-Link](#)
- [🔗 TP-Link Product Support - Wireless Networking Equipment Support](#)
- [🔗 Regulatory Compliance | TP-Link](#)
- [User Manual](#)

[Manuals+](#), [Privacy Policy](#)

This website is an independent publication and is neither affiliated with nor endorsed by any of the trademark owners. The "Bluetooth®" word mark and logos are registered trademarks owned by Bluetooth SIG, Inc. The "Wi-Fi®" word mark and logos are registered trademarks owned by the Wi-Fi Alliance. Any use of these marks on this website does not imply any affiliation with or endorsement.