



tp-link UH6120C USB Type-C 6in1 Hub Installation Guide

[Home](#) » [tp-link](#) » tp-link UH6120C USB Type-C 6in1 Hub Installation Guide 

Contents

- [1 tp-link UH6120C USB Type-C 6in1 Hub](#)
- [2 Product Usage Instructions](#)
- [3 Frequently Asked Questions](#)
- [4 Product Overview](#)
- [5 Using the Hub](#)
- [6 Safety Information](#)
- [7 FCC Compliance Information Statement](#)
- [8 Explanation of the symbols on the product label](#)
- [9 Customer Service](#)
- [10 Documents / Resources](#)
 - [10.1 References](#)



tp-link UH6120C USB Type-C 6in1 Hub



Specifications

- **Product:** USB Type-C 6-in-1 Hub
- **Ports:**
 - **USB-C** Connector
 - **USB-C** PD Port
 - **USB-C** Port
 - **Gigabit Ethernet** Port
- **Data Transfer Speed:** USB 3.0; 5 Gbps
- **Power Delivery:** Up to 100W
- **Video Output:** Up to 4K@60Hz
- **Supported Systems:** Windows, macOS, iPadOS, iOS, ChromeOS, Linux, Android

Product Usage Instructions

Connecting the Hub

- Plug the USB-C connector into your host device.

Using the Ports

- Plug your external peripherals into the corresponding ports of the hub.

Charging Your Device

- If you wish to charge your host device using a PD charger, connect it to the USB-C PD port on the hub.

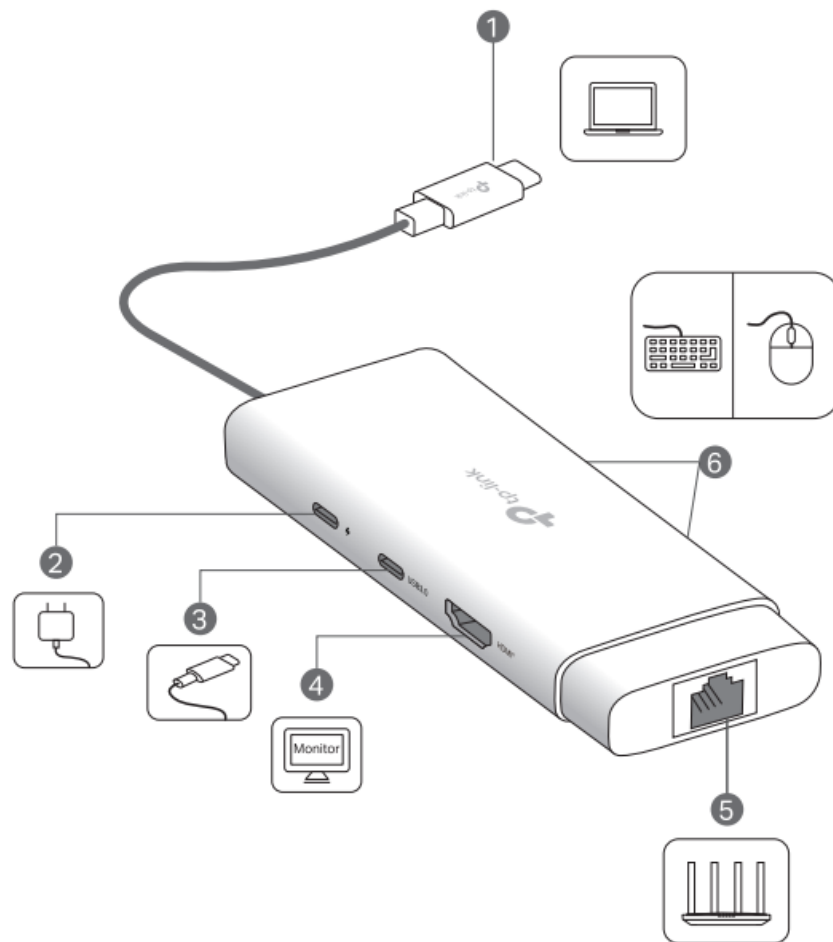
Removing the Hub

- Before unplugging the hub from your host device, make sure to remove any external peripherals connected to the hub.

Frequently Asked Questions

- **Q: Do I need a PD charger to use this hub?**
 - **A:** No, a PD charger is not required for basic functionality.
 - However, if you want to charge your host device using a PD charger, you can connect it to the USB-C PD port on the hub.
- **Q: Can I use this hub with devices other than laptops?**
 - **A:** Yes, this hub is compatible with various systems including Windows, macOS, iPadOS, iOS, ChromeOS, Linux, and Android devices.

Product Overview



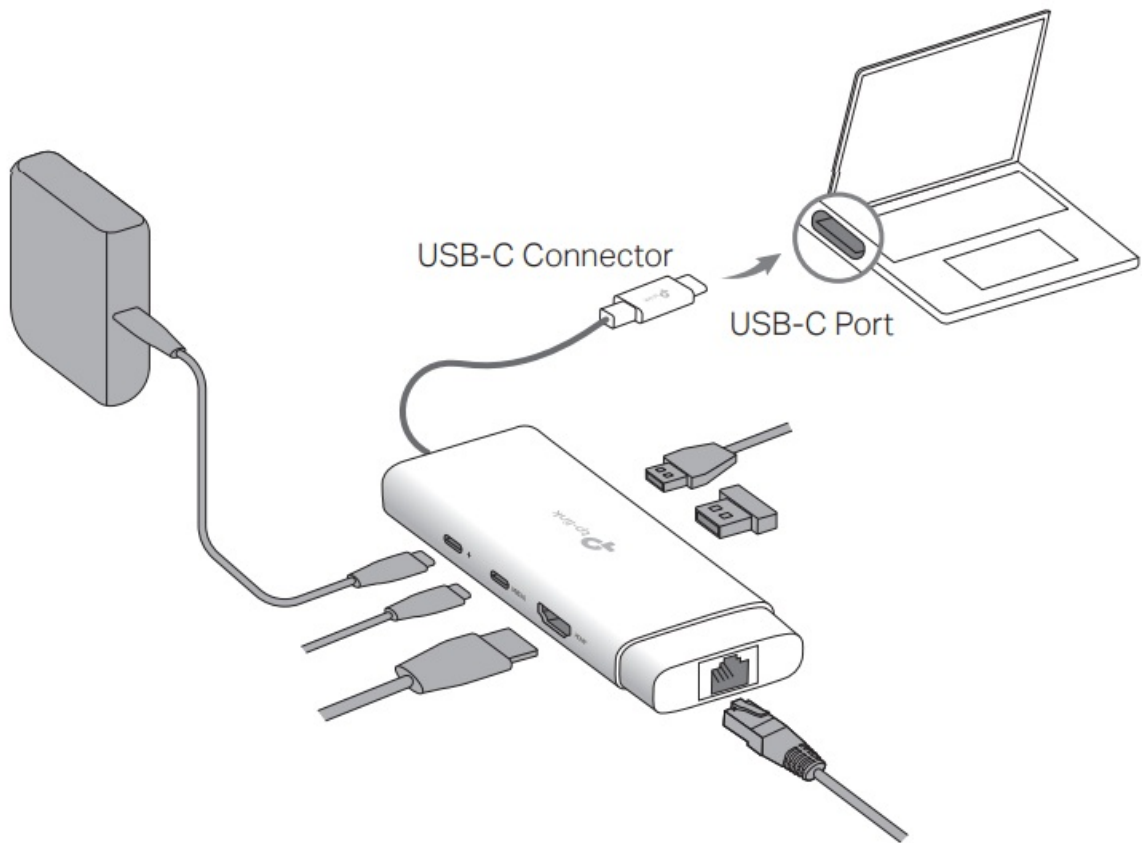
1) USB-C Connector	For connecting to your host device.
2) USB-C PD (Power Delivery) Port	For unidirectionally charging your host device when connected to a PD charger. PD 3.0; Up to 100W * Does not support data transfer.
3) USB-C Port	USB 3.0; 5 Gbps data transfer
4) HDMI® Port	Up to 4K@60Hz (backward compatible)
5) Gigabit Ethernet Port	For connecting to a wired network provided by a router, modem, etc.
6) USB-A Ports ×2	USB 3.0; 5 Gbps data transfer

Note: The ports' actual performance may vary based on your host device specifications.

Input	PD: 5V/3A, 9V/3A, 12V/3A, 15V/3A, 20V/5A USB-C Connector: 5V/3A
Supported Systems	Windows, macOS, iPad, iOS, ChromeOS, Linux, Android
Plug and Play	USB-C PD port, USB-C port, HDMI® port, USB-A ports, gigabit Ethernet port.* * The gigabit Ethernet port may require installing a driver for compatibility with certain older operating systems. Please visit our official website at www.tp-link.com to download the necessary driver for these systems: <ul style="list-style-type: none"> • Windows 7/8 • Mac OS X 10.9 to 10.15

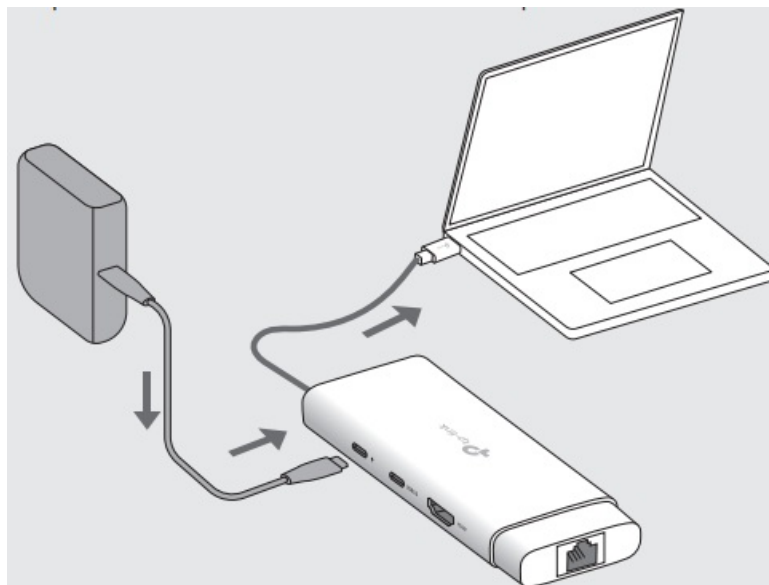
Using the Hub

- This hub supports the Plug and Play feature. Plug the USB-C connector into your host device, then plug in your external peripheral into the corresponding port of the hub.
- **Note:** A PD charger (not included) is not required. If you wish to use a PD charger to charge your host device, please refer to Tips (2B).



Tips:

1. When not in use, please unplug or remove the external peripherals from the hub first, and then unplug the hub from your host device.
2. If you need to connect a PD charger to the hub's USB-C PD port, please:
 - **A)** Notice that it only has the charging function and is input only.
 - **B)** Use an original or certified PD charger to charge your host device. The output of the PD charger should meet the input specifications of the USB-C PD port.



- This is a class B product. In a domestic environment, this product may cause radio interference, in which case the user may be required to take adequate measures.



- HIGH-DEFINITION MULTIMEDIA INTERFACE The terms HDMI, HDMI High-Definition Multimedia Interface, HDMI trade dress, and HDMI Logos are trademarks or registered trademarks of HDMI Licensing Administrator, Inc.
- TP-Link hereby declares that the device complies with the essential requirements and other relevant provisions of directives 2014/30/EU, 2009/125/EC, 2011/65/EU, and (EU)2015/863.
- The original EU Declaration of Conformity may be found at <https://www.tp-link.com/en/support/ce/>
- TP-Link hereby declares that the device complies with the essential requirements and other relevant provisions of the Electromagnetic Compatibility Regulations 2016.
- The original UK Declaration of Conformity may be found at <https://www.tp-link.com/support/ukca/>

Safety Information

- When the product has a power button, the power button is one of the ways to shut off the product; when there is no power button, the only way to completely shut off power is to disconnect the product or the power adapter from the power source.
- Do not attempt to disassemble, repair, or modify the device. If you need service, please contact us.
- Keep the device away from water, fire, humidity, or hot environments.
- This equipment can be powered only by pieces of equipment that comply with Power Source Class 2 (PS2) or Limited Power Source (LPS) defined in the standard of IEC 62368-1.
- **Operating Temperature:** 0°C~40°C (32°F~104°F),
- **Storage Temperature:** -40°C~60°C (-40°F ~140°F)

FCC Compliance Information Statement

This device complies with part 15 of the FCC Rules. Operation is subject to the following two conditions:

1. This device may not cause harmful interference.
2. This device must accept any interference received, including interference that may cause undesired operation.

Any changes or modifications not expressly approved by the party responsible for compliance could void the user's authority to operate the equipment.

Note: The manufacturer is not responsible for any radio or TV interference caused by unauthorized modifications to this equipment. Such modifications could void the user's authority to operate the equipment.

We, TP-Link Systems Inc., have determined that the equipment shown above has been shown to comply with the applicable technical standards, FCC part 15. There is no unauthorized change is made to the equipment and the equipment is properly maintained and operated. This equipment has been tested and found to comply with the limits for a Class B digital device, under part 15 of the FCC Rules. These limits are designed to provide reasonable protection against harmful interference in a residential installation. This equipment generates, uses, and can radiate radio frequency energy and, if not installed and used under the instructions, may cause harmful interference to radio communications. However, there is no guarantee that interference will not occur in a particular installation. If this equipment does cause harmful interference to radio or television reception, which can be determined by turning the equipment off and on, the user is encouraged to try to correct the interference by one or more of the following measures:

- Reorient or relocate the receiving antenna.
- Increase the separation between the equipment and the receiver.

- Connect the equipment to an outlet on a circuit different from that to which the receiver is connected.
- Consult the dealer or an experienced radio/ TV technician for help.

Industry Canada Statement

CAN ICES-3 (B)/NMB-3(B)



Explanation of the symbols on the product label

Symbols may vary from product.

Note: The product label can be on the product and its I.T.E. power supply.

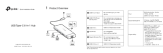
- Indoor use only
- DC voltage
- AC voltage
- **RECYCLING** This product bears the selective sorting symbol for Waste electrical and electronic equipment (WEEE).
 - This means that this product must be handled according to European directive 2012/19/EU to be recycled or dismantled to minimize its impact on the environment.
 - User has the choice to give their product to a competent recycling organization or the retailer when they buy new electrical or electronic equipment.
- Energy efficiency marking (level VI)
- Polarity of output terminals
- Class II equipment
- Caution
- Operator's manual

Customer Service





- **Product Name:** USB Type-C 6-in-1 Hub
- **Model Number:** UH6120C
- **Responsible party:**
- **TP-Link Systems Inc.**
- **Address:** 10 Mauchly, Irvine, CA 92618
- **Website:** <http://www.tp-link.com/us/>
- **Tel:** +1 6263330234

- Fax: +1 9095276804
- E-mail: sales.usa@tp-link.com
- Issue Date: 2025-01-20
- Images are for demonstration only.
- ©2025 TP-Link 1910013918 REV1.0.0

Documents / Resources

	tp-link UH6120C USB Type-C 6in1 Hub [pdf] Installation Guide UH6120C USB Type-C 6in1 Hub, UH6120C, USB Type-C 6in1 Hub, Type-C 6in1 Hub, 6in1 Hub , Hub
---	---

References

-  [Link: Pay quickly, shop confidently](#)
-  [WiFi Networking Equipment for Home & Business | TP-Link](#)
-  [CE Regulatory Compliance | TP-Link](#)
-  [Regulatory Compliance | TP-Link](#)
- [User Manual](#)

[Manuals+](#), [Privacy Policy](#)

This website is an independent publication and is neither affiliated with nor endorsed by any of the trademark owners. The "Bluetooth®" word mark and logos are registered trademarks owned by Bluetooth SIG, Inc. The "Wi-Fi®" word mark and logos are registered trademarks owned by the Wi-Fi Alliance. Any use of these marks on this website does not imply any affiliation with or endorsement.