



tp-link Tapo Smart Contact Sensor User Guide

[Home](#) » [tp-link](#) » [tp-link Tapo Smart Contact Sensor User Guide](#) 

Contents

- [1 tp-link Tapo Smart Contact Sensor](#)
- [2 About This Guide](#)
- [3 Introduction](#)
- [4 Tapo Smart Ecosystem](#)
- [5 Automate Your Home](#)
- [6 Set Up Your Smart Sensor](#)
- [7 Use Your Smart Sensor](#)
- [8 Explore Smart Actions](#)
- [9 How to Create Smart Actions](#)
- [10 How to Replace the Battery](#)
- [11 How to Reset Your Smart Sensor](#)
- [12 Authentication](#)
- [13 Safety Information](#)
- [14 Documents / Resources](#)
 - [14.1 References](#)
- [15 Related Posts](#)



tp-link Tapo Smart Contact Sensor



About This Guide

This guide provides a brief introduction to the Smart Contact Sensor and the Tapo app, as well as regulatory information. Please note that features available in Tapo may vary by model and software version. Tapo availability may also vary by region. All images, steps, and descriptions in this guide are only examples and may not reflect your actual Tapo experience.

Conventions

In this guide, the following convention is used:

Convention	Description
Blue	Key information appears in blue, including management page text such as menus, items, buttons and so on.
<u>Underline</u>	Hyperlinks are in blue and underlined. You can click to redirect to a website.
Note:	Ignoring this type of note might result in a malfunction or damage to the device.

More Info

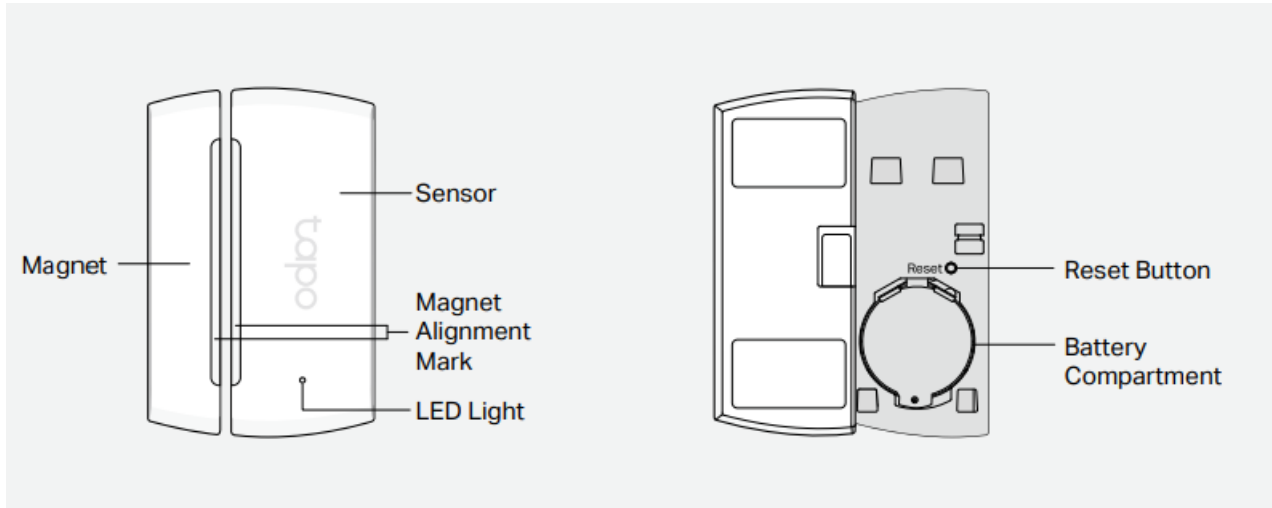
- Specifications can be found on the product page at <https://www.tapo.com>.
- Our Technical Support and troubleshooting information can be found at <https://www.tapo.com/support/>.
- The setup videos can be found at [https://www.tp-link.com/support/](https://www.tp-link.com/support/setup-video/#smart-sensors) setup-video/#smart-sensors.

Introduction

Know when doors/windows are opened or closed. Check on your doors and windows at a glance with the Tapo app and receive instant alerts. This makes your home safer and smarter.

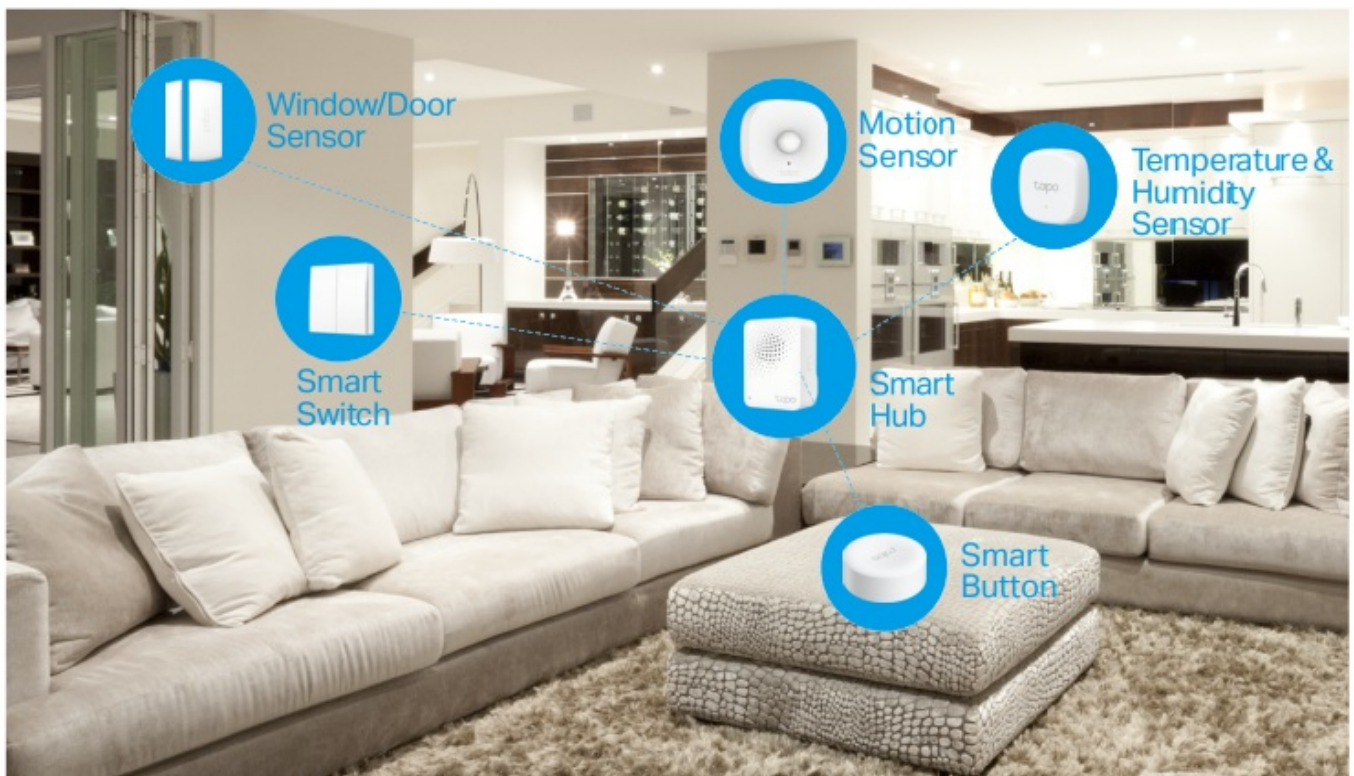
- **Window/Door Safeguard** – Monitors the opening & closing of windows, doors, cabinets, the fridge, or the mailbox in real time.
- **Instant App Notification** – Is your parcel locked away? Find out immediately with instant notifications.
- **Smart Action Support** – Connect the actions with other smart devices for a welcome return home.

- **Easy Installation** – Mount to nearly any surface with included 3M adhesive.
- **Great Compatibility** – Just one part of the integrated Tapo ecosystem.
- **Battery Powered** – Battery-powered design with 1+ year battery life. (Based on the testing of 30 triggers a day.)
- **Device Sharing** – Easily share management permissions with each member of your family.
- **Easy Setup and Use** – Set up quickly and easily through the free Tapo app.



Tapo Smart Ecosystem

Tapo is the easy way to turn your home into a smart home. With the Tapo Hub as a bridge, Tapo Smart Sensor works with a wide range of Tapo accessories. So you can easily control and monitor your home from anywhere.



Automate Your Home

Create a Smart Action to automate your smart devices. Customize your own Smart Actions to group your Tapo products together any way you want.



Tapo T110



Tapo Hub



Light the Way When Arriving Home

Turn on the light automatically when you open the door.



Tapo T110



Smart Lightitng



Build Smart Alarm

Trigger hub alarm and send you app notifications when someone opens the door or window.

OR

Secure Door/Window

Your Hub will ring if you forget to close the door.

Set Up Your Smart Sensor

Before You Start

A Tapo Hub is required. Make sure your Tapo Hub is successfully added via the Tapo app.



OR

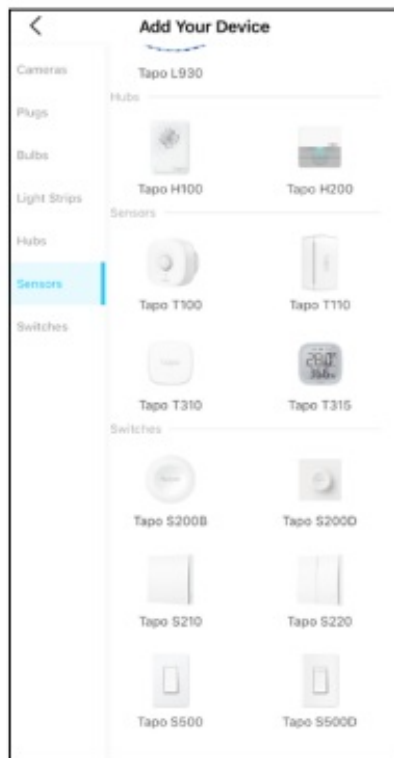


1. Set Up Your Sensor

Tap the button in the Tapo app, tap Sensors, and select your model. Follow the instructions in the Tapo app to complete the setup.

2. Check the LED & Set Up

Check if the LED blinks. If not, use a pin to press and hold the Reset button for 5s. Follow app instructions to complete the setup.



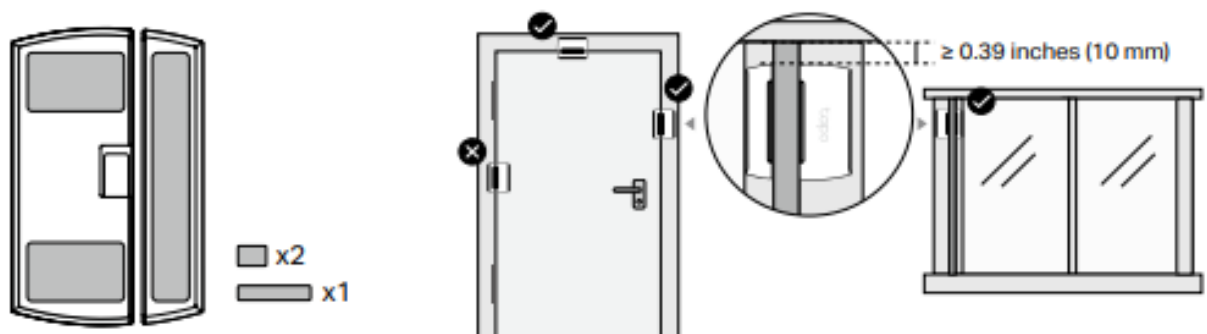
3. Test Your Sensor

- a. Open and close the sensor to test it in your preferred location.
- b. Check the Event Log on the Tapo app to confirm the open/closed status.



4. Mount Your Sensor

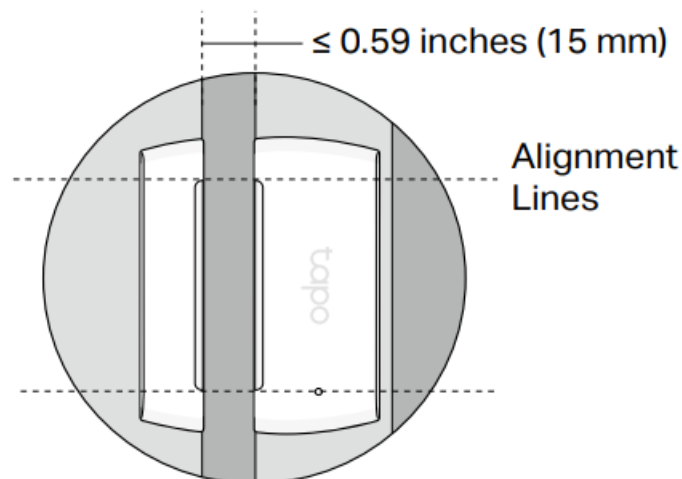
- a. Stick the included adhesives on the sensor and magnet.
- b. Choose where you'd like to install the sensor (but don't attach it yet). Place the magnet near the edge of the door or window that moves.



Notes:

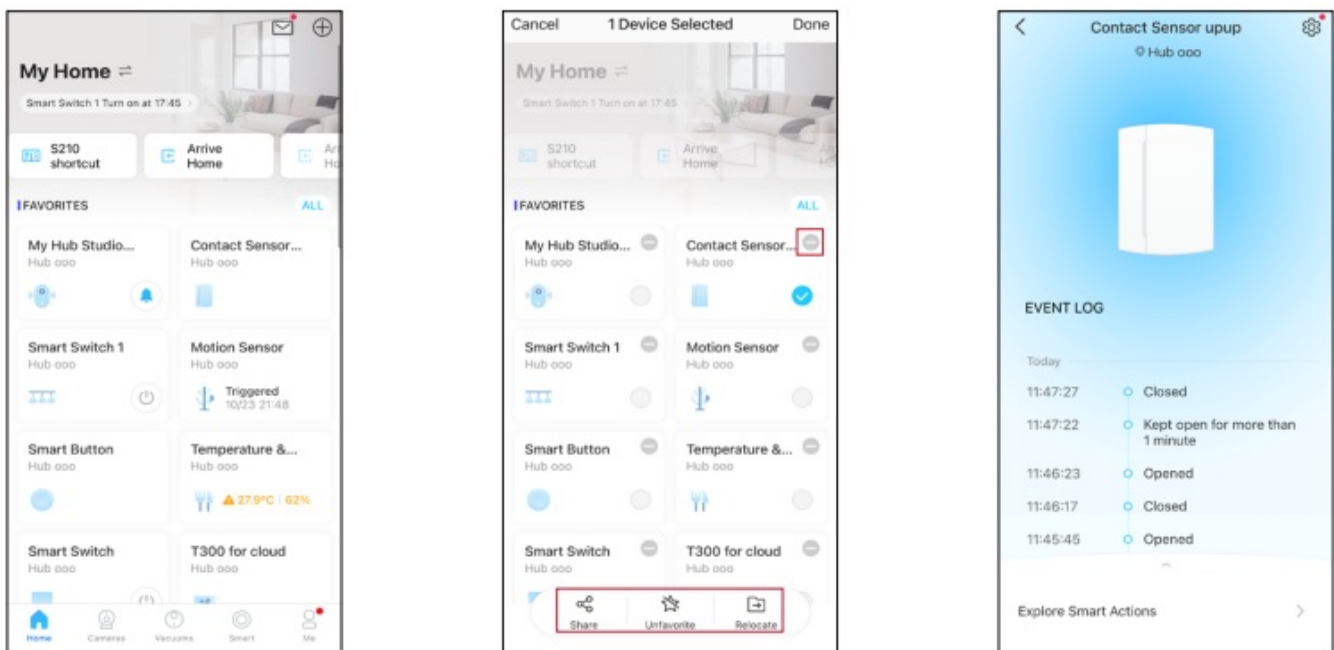
- Leave at least 0.39 inches (10 mm) of space so you can open the battery compartment.

- Installation height should not be higher than 6.56 ft (2 m).
- c. Align the magnet and sensor with no more than 0.59 inches (15 mm) between them when the door or window is closed. Peel the backing from the adhesive and press the sensor and magnet into place.



Use Your Smart Sensor

After you successfully set up your hub and sensor, you will see your devices listed on the home page. With the Tapo app, you can view and manage your devices and get instant notifications anytime, anywhere.



• Home Page

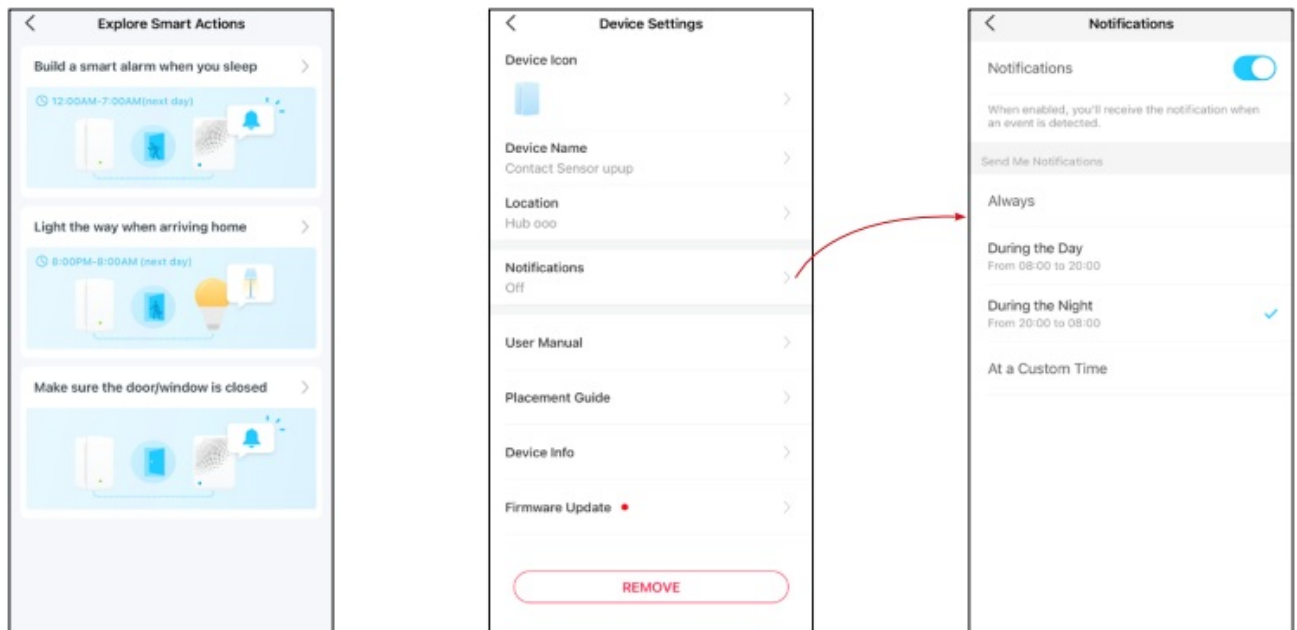
This page lists all the devices you've added and you can view them directly and manage them easily. Tap the card to enter its Status page.

• Home Page Settings

Long press on a card, then you can reorder cards, tap to remove your device from your account, share your device, favorite/unfavorite device, or relocate your device to other Home.

• Status Page

You can check all events of you sensor. Slide the panel up to check more settings or tap the gear icon to enter the Settings page.



- **Featured Smart Actions**

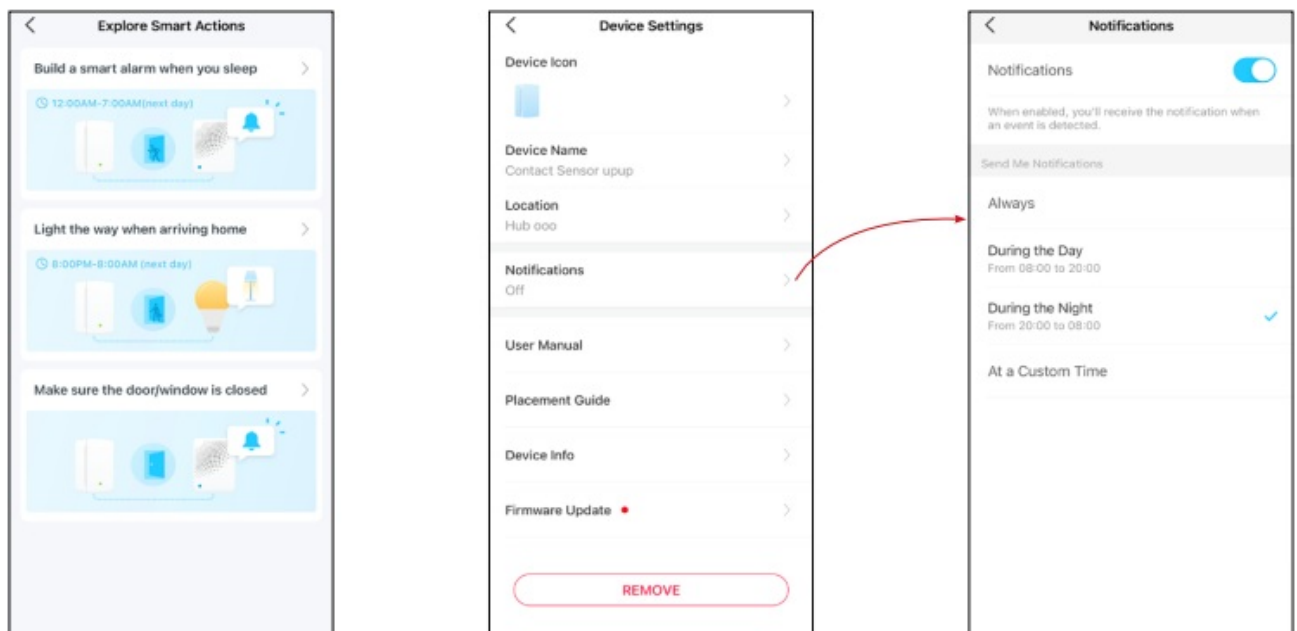
The sensor can work with other Tapo devices to automate your home. You can customize smart actions based on the templates.

- **Device Settings**

Check/edit the basic info, set Notifications settings, view User Manual and Placement Guide, or remove your device from your account.

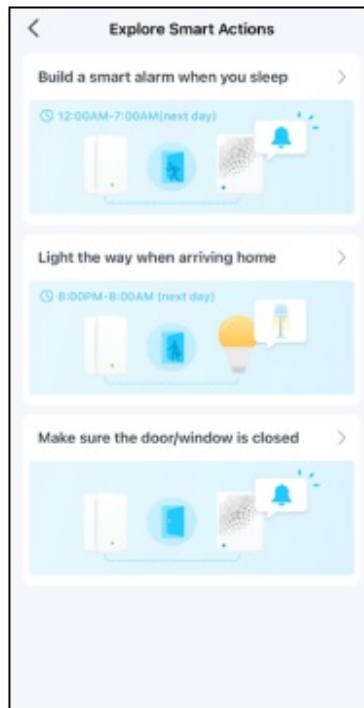
- **Notifications Settings**

Turn on Notifications if you want to receive app notifications when your sensor detects an event. Set the time you want to be notified.



Explore Smart Actions

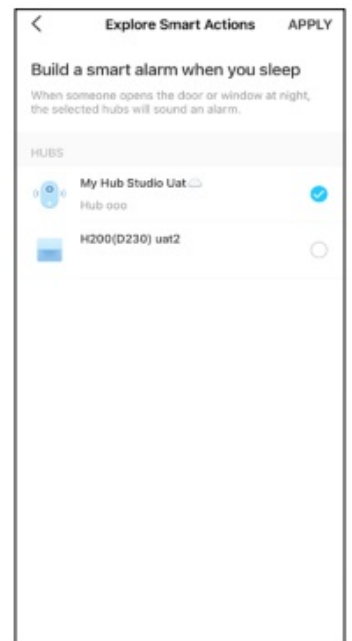
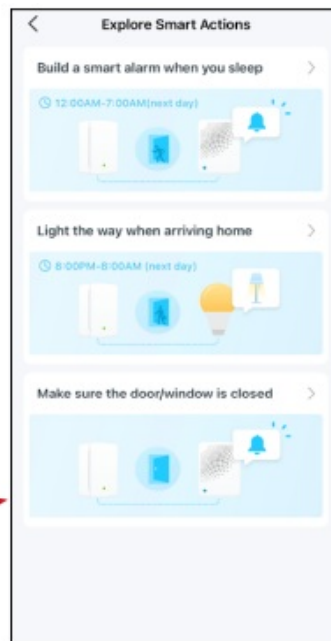
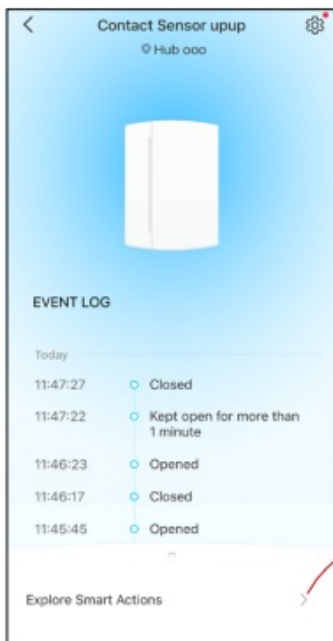
The sensor can work with other Tapo devices to automate your home. Trigger different actions when it is opened or closed. You can customize smart actions based on the templates. This makes your home safer and smarter.



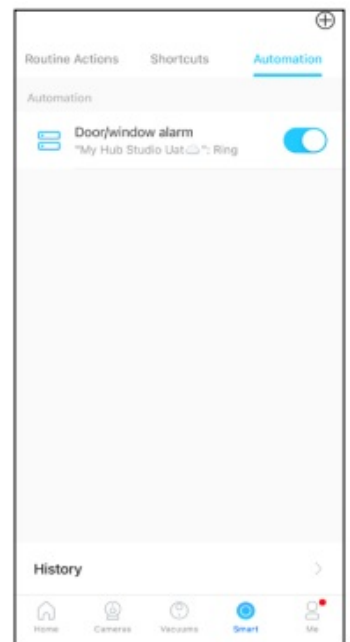
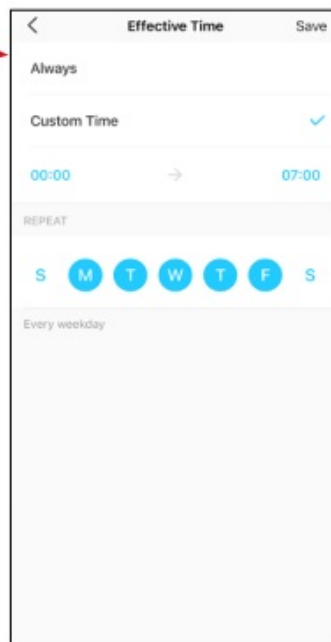
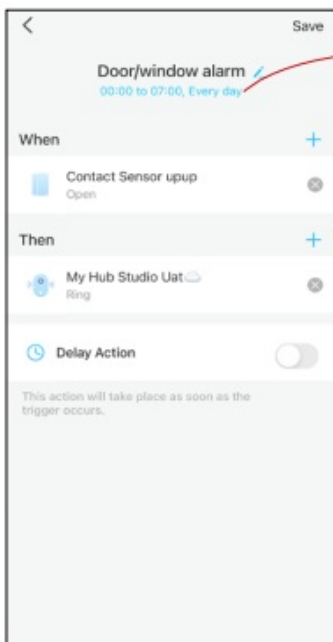
Smart Actions	What can this Smart Action do?	Tapo Device Requirement
Build a smart alarm when you sleep	When someone opens the door or window at night, the hub will sound an alarm.	Hub with alarm feature
Light the way when arriving home	When you arrive home, the light will automatically turn on the moment you open the door.	Hub + Bulb/Light Strip/Plug/ Switch
Make sure the door/ window is closed	If you forget to close the door/ window, the hub will ring.	Hub with alarm feature

How to Create Smart Actions

1. On the Status page, tap Explore Smart Actions.
2. Choose a template and customize the smart action based on the template.
3. Select devices you want to take action when the sensor detects an event.

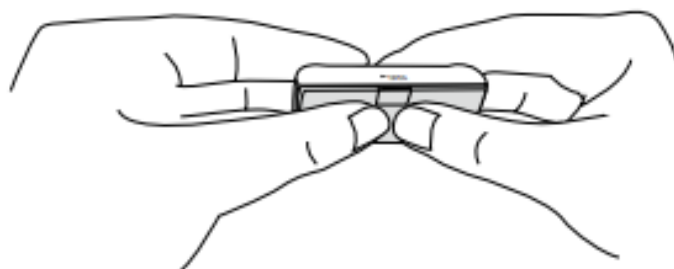


4. Customize the settings as needed. Turn on Delay Action if you want the action to take place some time after the sensor detects an event.
 5. Set the effective time for this smart action.
- Done! You can go to Smart (Smart Actions) > Automation to check the item. Toggle on/off to enable/disable the action, tap to edit, and swipe right to delete.

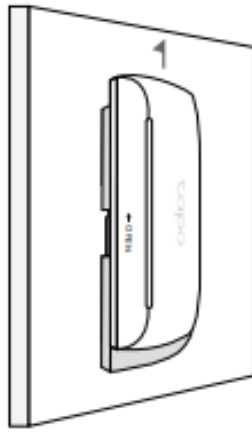


How to Replace the Battery

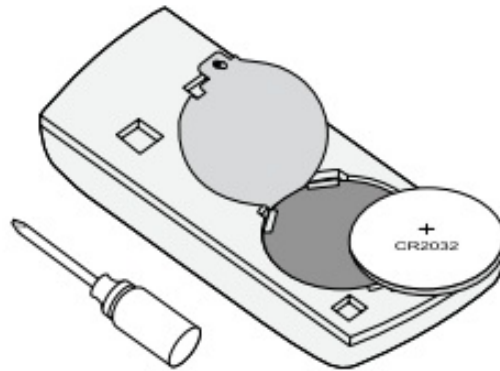
If you haven't installed it on a door or window: Slide to remove the cover.



If you have installed it on a door or window:
Remove the cover of your sensor by pushing the cover up.



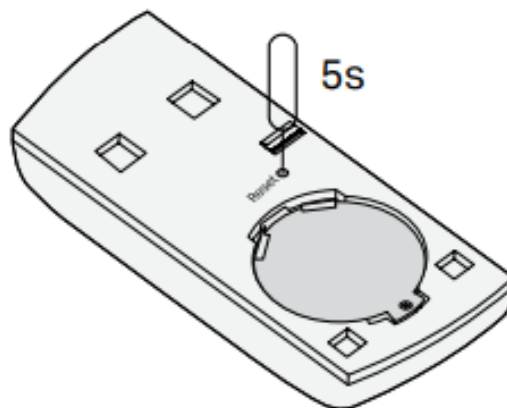
Remove the screw securing the battery and remove the old battery. Insert the new battery into the battery compartment, making sure the battery is level and its positive side is facing up. Then replace the cover.



How to Reset Your Smart Sensor

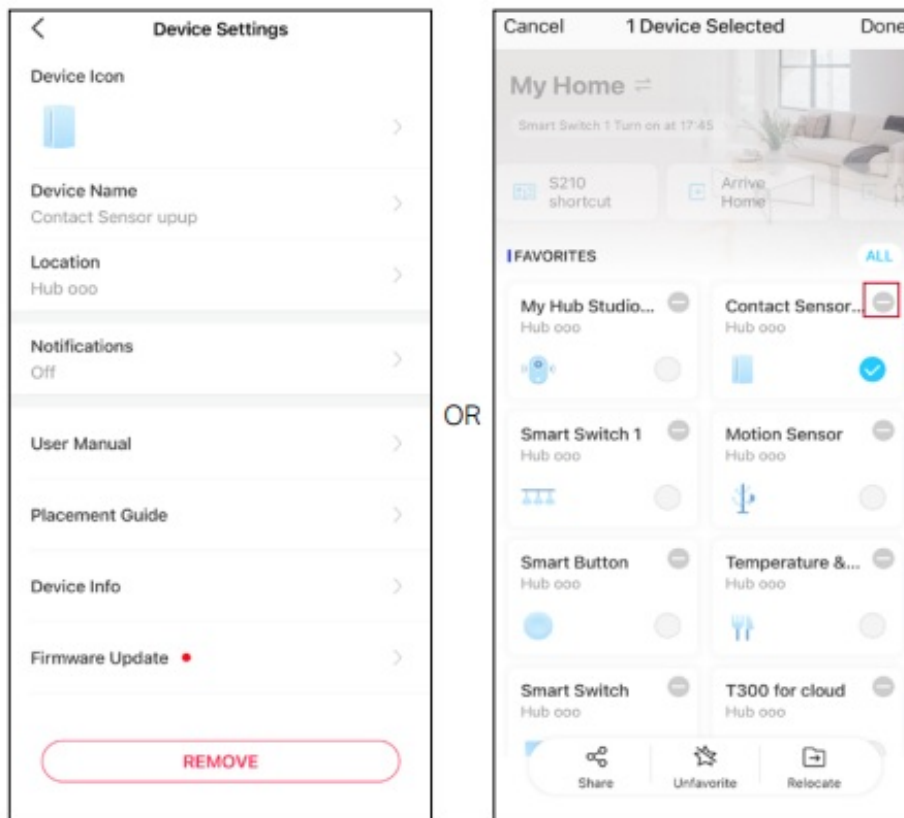
- **Option 1. Via Reset Button**

Remove the cover, then use a pin to press and hold the Reset button for 5 seconds until the front LED starts blinking.



- **Option 2. Via the Tapo App**

Long press the card on the home page and tap or go to the Device Settings page and tap the Remove button to remove your sensor from your account.



Authentication

FCC Compliance Information Statement



Product Name: Tapo Smart Contact Sensor

Model Number: Tapo T110

Responsible party:

TP-Link USA Corporation

Address: 10 Mauchly, Irvine, CA 92618

Website: <http://www.tp-link.com/us/>

Tel: +1 626 333 0234

Fax: +1 909 527 6804

E-mail: sales.usa@tp-link.com

This equipment has been tested and found to comply with the limits for a Class B digital device, pursuant to part 15 of the FCC Rules. These limits are designed to provide reasonable protection against harmful interference in a residential installation. This equipment generates, uses and can radiate radio frequency energy and, if not installed and used in accordance with the instructions, may cause harmful interference to radio communications. However, there is no guarantee that interference will not occur in a particular installation. If this equipment does cause harmful interference to radio or television reception, which can be determined by turning the equipment off and on, the user is encouraged to try to correct the interference by one or more of the following measures:

- Reorient or relocate the receiving antenna.
- Increase the separation between the equipment and receiver.
- Connect the equipment into an outlet on a circuit different from that to which the receiver is connected.
- Consult the dealer or an experienced radio/ TV technician for help.

This device complies with part 15 of the FCC Rules. Operation is subject to the following two conditions:

1. This device may not cause harmful interference.
2. This device must accept any interference received, including interference that may cause undesired operation.

Any changes or modifications not expressly approved by the party responsible for compliance could void the user's authority to operate the equipment.

Note: The manufacturer is not responsible for any radio or TV interference caused by unauthorized modifications to this equipment. Such modifications could void the user's authority to operate the equipment.

FCC RF Radiation Exposure Statement

This equipment complies with FCC RF radiation exposure limits set forth for an uncontrolled environment. This device and its antenna must not be co-located or operating in conjunction with any other antenna or transmitter. "To comply with FCC RF exposure compliance requirements, this grant is applicable to only Mobile Configurations. The antennas used for this transmitter must be installed to provide a separation distance of at least 20 cm from all persons and must not be co-located or operating in conjunction with any other antenna or transmitter." We, TP-Link USA Corporation, has determined that the equipment shown as above has been shown to comply with the applicable technical standards, FCC part 15. There is no unauthorized change is made in the equipment and the equipment is properly maintained and operated.

Issue Date: 2022.10.31

CE Mark Warning



This is a class B product. In a domestic environment, this product may cause radio interference, in which case the user may be required to take adequate measures.

Operating Frequency / Nominal Operating Frequency / Max Output Power:

863~865MHz / 863.35MHz / 25mW (e.r.p)

863~865MHz / 864.35MHz / 25mW (e.r.p)

868~868.6MHz / 868.35MHz / 25mW (e.r.p)

EU declaration of conformity

TP-Link hereby declares that the device is in compliance with the essential requirements and other relevant provisions of directives 2014/53/EU, 2009/125/EC, 2011 /65/EU and (EU) 2015/863.

The original EU declaration of conformity may be found at <https://www.tapo.com/en/support/ce/>

RF Exposure Information

This device meets the EU requirements (2014/53/EU Article 3.1a) on the limitation of exposure of the general public to electromagnetic fields by way of health protection.

The device complies with RF specifications when the device used at 20 cm from your body.

Restricted to indoor use.

UKCA Mark



UK Declaration of Conformity

TP-Link hereby declares that the device is in compliance with the essential requirements and other relevant provisions of the Radio Equipment Regulations 2017.

The original UK declaration of conformity may be found at <https://www.tapo.com/support/ukca/>

Safety Information

- Keep the device away from water, fire, humidity or hot environments.
- Do not attempt to disassemble, repair, or modify the device. If you need service, please contact us.
- Do not use the device where wireless devices are not allowed.
- Please read and follow the above safety information when operating the device. We cannot guarantee that no accidents or damage will occur due to improper use of the device. Please use this product with care and operate at your own risk.
- Do not ingest battery, Chemical Burn Hazard

CAUTION!

Risk of explosion if the battery is replaced by an incorrect type

CAUTION!

- Avoid replacement of a battery with an incorrect type that can defeat a safeguard.
- Avoid disposal of a battery into fire or a hot oven, or mechanically crushing or cutting of a battery, that can result in an explosion.
- Do not leave a battery in an extremely high temperature surrounding environment that can result in an explosion or the leakage of flammable liquid or gas. Do not leave a battery subjected to extremely low air pressure that may result in an explosion or the leakage of flammable liquid or gas.

CAUTION: Do not ingest battery. Chemical Burn Hazard

- This product contains a coin / button cell battery. If the coin / button cell battery is swallowed, it can cause severe internal burns in just 2 hours and can lead to death.
- Keep new and used batteries away from children.
- If the battery compartment does not close securely, stop using the product and keep it away from children.
- If you think batteries might have been swallowed or placed inside any part of the body, seek immediate medical attention

Warnings

- **Operating Temperature:** 0 °C– 40 °C (32°F–104°F)
- **Operating Humidity:** 10%–90%RH, Non-condensing
- **Handling** Instructions for Lithium Ion Rechargeable Battery

Please read and follow the handling instructions for the battery before use. Improper use of the battery may cause heat, fire explosion, damage or capacity deterioration of the battery.

- Do not place or leave the battery and equipment in the reach of infants so that they are not able to swallow or mistreat the battery by mistake. In case of ingestion, consult with a doctor immediately.
- Do not let leaked electrolyte come into contact with eyes or skin. In such a case, immediately wash the area of contact with clean water and seek help from a doctor
.If not treated soon, prolonged contact may cause serious injury.
- Do not put the battery into a fire. Do not use it or leave it in a place near fire, heaters, or high temperature sources.

In such a case, the insulator in the battery may be melted, the safety vent and structure may be damaged, or the electrolyte may catch fire, all of which may cause heat generation, explosion, or fire.

- Do not submerge the battery in water, or wet the battery.

If the protecting device assembled in the battery is damaged, the battery may be charged with an abnormal current and voltage and may cause a chemical reaction within the battery, which may result in the cause of heat generation, explosion, or fire of the battery.

- Do not use any battery charger not specified by the manufacture, also follow the charge conditions specified by the manufacture.

If the battery is charged under other conditions (a high temperature, a high voltage / current, or an altered charger) not specified by the manufacture, the battery may become over-charged with an excessive current and cause heat, explosion, or fire with abnormal chemical reactions.

- Do not use, charge, or leave the battery near fire or in a car under the blazing sun. Such a high temperature may cause damage of the protecting device in the battery, which may result in an abnormal reaction, and then heat generation, explosion, or fire.

- Do not connect the battery reversed in positive (+) and negative (-) terminals in the charger or equipment.

In case the battery is connected and charged reversely, it may cause heat generation, explosion, or fire due to an abnormal chemical reaction.

- Do not let the battery terminals (+ and -) contact a wire or any metal (like a metal necklace or a hairpin) with which it carried or stored together. In such a case, the battery will be shorted and cause an excessive current, which may result in heat generation, explosion, or fire.

- Do not connect the battery directly to an electric outlet or cigarette heater socket in car.

With a high voltage applied, the battery may overheat, explode, or cause fire.

- Do not throw or drop the battery.

Strong impact may damage the protecting device, which may cause an abnormal chemical reaction during charging and result in heat generation, explosion, or fire of the battery.

- Do not drive a nail in, hit with a hammer, or stamp on the battery.

In such a case, the battery may be deformed and shorted, which may cause heat generation, explosion, or fire of the battery.

- Do not solder the battery directly.

Heat applied during soldering may damage the insulator of the safety vent and mechanism, which may result in heat generation, explosion, or fire of the battery.

- Do not disassemble or alter the battery.

The battery employs a safety mechanism and a protecting device in order to avoid any danger. If these are damaged, heat, explosion or fire may be caused.

CAUTION

- Do not put the battery in a microwave or a pressure cooker.

Sudden heat may damage the seal of the battery and may cause heat generation, explosion, or fire of the battery.

- Do not use the battery with other maker's batteries, different types and / or models of batteries such as dry batteries, nickel-metal hydride batteries, or nickel-cadmium batteries, or new and old lithium ion batteries together.

In such a case, over-discharge during use, or over-charge during charge may occur abnormal chemical reactions and may cause heat generation, explosion, or fire of the battery.

- Do not leave the battery in a charger or equipment if it generates an odor and /or heat, changes color and / or shape, leaks electrolyte, or causes any other abnormality.

In such a case, immediately take the battery out of the charge or equipment and keep it away from fire, otherwise, the battery might overheat, explode, or cause fire.






- Discontinue charging after specified charging time even if the charge is not complete, otherwise, the battery might cause heat generation, explosion, or fire.
- Do not use the battery in the place where the static electricity (more than the limit of the manufacturer's guarantee) occurs. Otherwise, the protecting device in the battery might be damaged and cause heat generation, explosion, or fire.
- Do not use the battery in other than the following conditions; otherwise, the battery might cause heat generation, damage, or deterioration of its performance.

Operating environment:

- When the battery is charged: 0°C ~ +45°C (Humidity < 80%)
- When stored 1 months: -20°C ~ +50°C (Humidity < 80%)
- When stored 3 months: -20°C ~ +45°C (Humidity < 80%)
- When stored 1 year: -20°C ~ +20°C (Humidity < 80%)

Please read and follow the above safety information when operating the device. We cannot guarantee that no accidents or damage will occur due to improper use of the device. Please use this product with care and operate at your own risk.

Explanation of the symbols on the product label

Symb ol	Explanation
	Direct current
	Indoor use only
	Caution
	Operator's manual
	<p>RECYCLING</p> <p>This product bears the selective sorting symbol for Waste electrical and electronic equipment (WEEE). This means that this product must be handled pursuant to European directive 2012/19/EU in order to be recycled or dismantled to minimize its impact on the environment.</p> <p>User has the choice to give his product to a competent recycling organization or to the retailer when h e buys a new electrical or electronic equipment.</p>









Documents / Resources



[tp-link Tapo Smart Contact Sensor](#) [pdf] User Guide

Tapo Smart Contact Sensor, Tapo, Smart Contact Sensor, Contact Sensor, Smart Sensor, Tapo Sensor, Sensor

References

-  [Link: Simple, secure one-click payments](#)
-  [WiFi Networking Equipment for Home & Business | TP-Link](#)
-  [Tapo Smart | Smart Devices for Smart Living](#)
-  [Regulatory Compliance | Tapo](#)
-  [Support | Tapo](#)
-  [UKCA | Tapo](#)
-  [TP-Link Product Support - Wireless Networking Equipment Support](#)
-  [Download for Tapo T110 | TP-Link](#)

Manuals+