



tp-link RE750C Wi-Fi Range Extender User Guide

[Home](#) » [tp-link](#) » tp-link RE750C Wi-Fi Range Extender User Guide 

Contents

- 1 [tp-link RE750C Wi-Fi Range Extender](#)
- 2 [Product Usage Instructions](#)
- 3 [Power On](#)
- 4 [Set Up](#)
- 5 [Relocate](#)
- 6 [LED Explanation](#)
- 7 [Access Point Mode \(AP Mode\)](#)
- 8 [FAQ \(Frequently Asked Questions\)](#)
- 9 [Safety Information](#)
- 10 [Documents / Resources](#)
 - 10.1 [References](#)
- 11 [Related Posts](#)



tp-link RE750C Wi-Fi Range Extender

**Specifications:**

- Product: Wi-Fi Range Extender
- Manufacturer: TP-Link
- Frequency Bands: 2.4GHz, 5GHz
- Wireless Standards: IEEE 802.11 b/g/n/ac

Product Usage Instructions**Power On**

Plug the extender into a power outlet next to your router. Wait for the Power LED to turn solid on.

Set Up**Method 1: Via the WPS Button**

1. Activate the WPS function on your router by pressing the WPS button.

Method 2: Via the Tether App

1. Get the Tether app from the app store or scan the QR code.
2. Launch the Tether app and log in with your TP-Link ID.

Method 3: Via a Web Browser

1. Connect your device to the extender's network.
2. Press the WPS button on the extender and wait for LEDs to turn solid blue.
3. Log in to <http://www.tplinkrepeater.net> to complete the setup.

Relocate

1. Place the extender halfway between your router and Wi-Fi dead zone.
2. Wait for Signal LED to turn solid blue for optimal performance.

Enjoy your extended network with the same password as your main router.

FAQ:

1. Q1: What should I do if I cannot find my device during setup?

If you cannot find your device, please refer to the FAQ section for troubleshooting steps.

2. Q2: What should I do if the Signal LED does not turn solid on after setup?

If the Signal LED does not turn solid on, please refer to the FAQ section for troubleshooting steps.

Quick Installation Guide

Wi-Fi Range Extender



Setup with videos

Scan QR code or visit

<https://www.tp-link.com/support/setup-video/#range-extenders> and search for the setup video of your model.

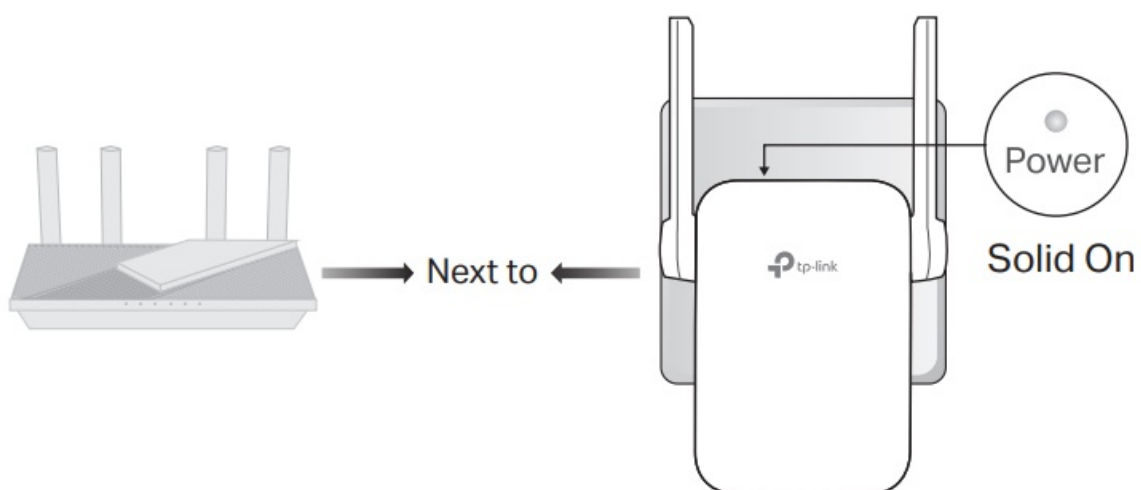


Images may differ from actual products.

Power On

Plug the extender into a power outlet next to your router. Wait until its Power LED turns solid on after blinking for a while.

Note: For safety, only plug the extender in the direction as shown below.



Set Up

Method 1: Via the WPS Button

1. Activate the WPS function on your router by pressing the WPS button.

Note: If you don't know how to do it, refer to your router's user manual, or you can use other methods to set it up.

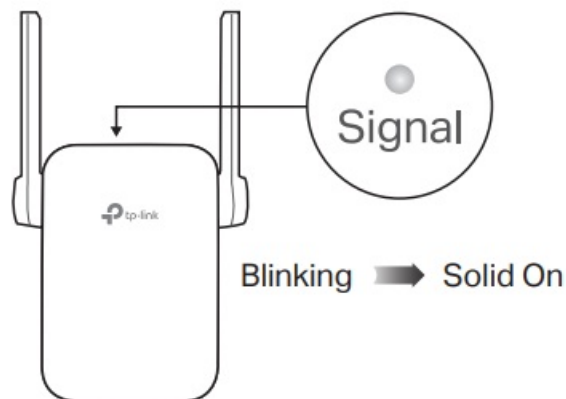
2.



Within 2 minutes, press the WPS button on the extender for 1 second, and the Signal LED starts blinking. Wait for the Signal LED, 2.4GHz LED and 5GHz LED to turn solid blue, indicating a successful connection.

Note: If only the 2.4GHz or 5GHz LED is solid blue, check to see if the router has both 2.4GHz and 5GHz bands turned on. If both are turned on, try WPS again or use other methods.

3.



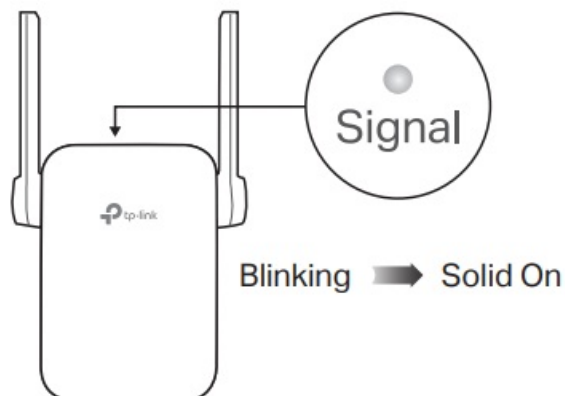
Done. You can connect to the extender's Wi-Fi.

Extended Network Names:

Router's network name with _EXT at the end or Same as your EasyMesh router (see back for EasyMesh details)

Passwords:

Same as your router




Method 2: Via the Tether App

1. Get the up-to-date Tether app from the Apple App Store or Google Play, or simply scan the QR code.

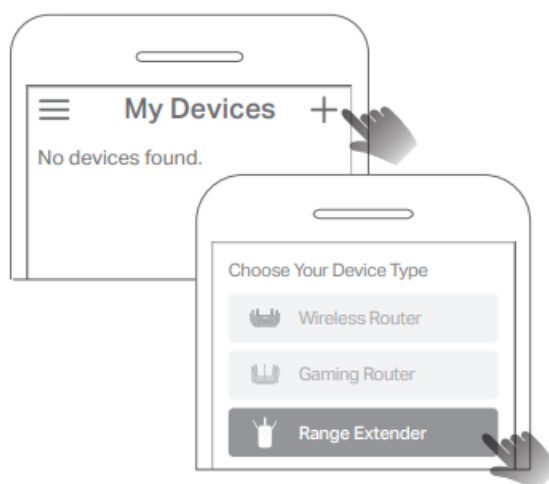


2. Launch the Tether app and log in with your TP-Link ID. If you don't have an account, create one first.

3. Tap the  button and select Range Extender.

Notes:

1. If you cannot find your device, please refer to FAQ > Q1.
2. Due to Tether app updates, your actual user interface and pathway may differ from those depicted here.

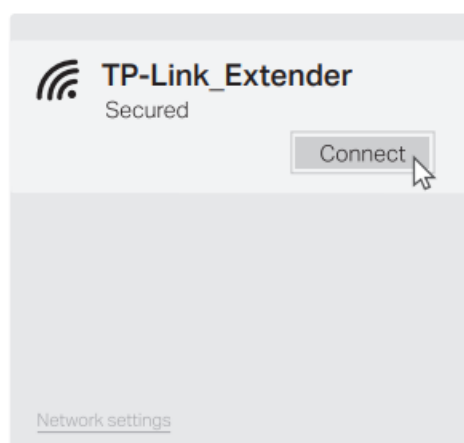


3. Follow app instructions to complete the setup. The Signal LED should turn solid on, indicating successful connection to your router.

Note: If the LED does not turn solid on, please refer to FAQ > Q2.

Method 3: Via a Web Browser

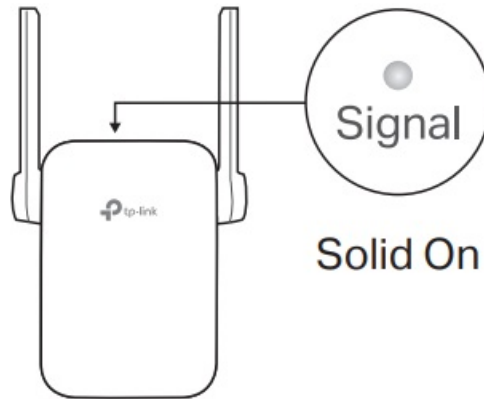
1. Connect your computer or smartphone to the extender's network TP-Link_Extender.



2. Visit <http://www.tplinkrepeater.net> or <http://192.168.0.254> in a web browser. Create a password to log in.



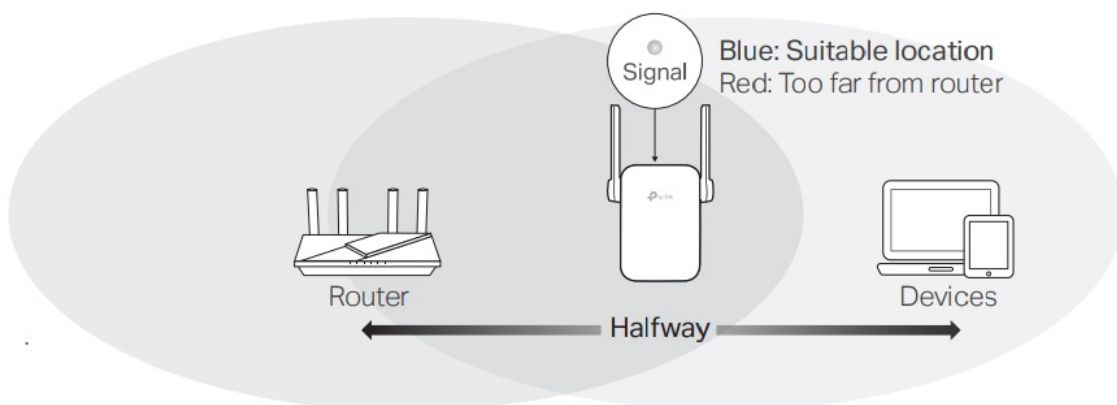
3. Follow web instructions to complete the setup.



Relocate

1. Plug in the extender about halfway between your router and the Wi-Fi dead zone. The location you choose must be within the range of your router.
2. Wait for about 2 minutes until the Signal LED turns solid blue. If it doesn't, relocate the extender closer to the router to achieve better signal quality.

Tip: To place the extender for optimal Wi-Fi performance, access extender settings via the Tether app and go to find Location Assistant, or simply scan the QR code to visit <https://www.tp-link.com/support/faq/3103/>.

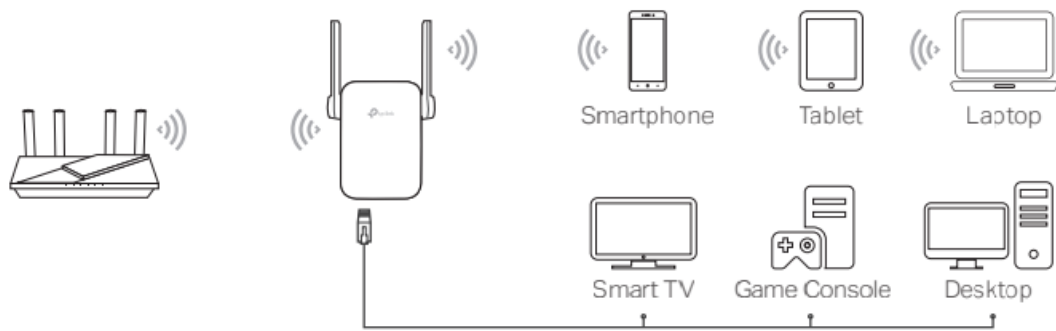


Enjoy!

- Connect your devices to the extender wirelessly or via an Ethernet cable, then enjoy the internet. The password

of your extended network is the same as your main router.

- You can also change the extender to Access Point Mode to transform your existing wired network to a wireless one. For details, see Access Point Mode (AP Mode) on the back page.



Access Extender Settings

After setup, you can access extender settings via any of the methods below. You can reselect main network, change extended network settings and more.

Note: If your extender and router use the same network name, Method 1 is recommended.

Method 1: Via the Tether App

1. Connect your smartphone to the extender's or router's network.
2. Launch the Tether app, select your extender, and log in.
3. Manage the extender as needed.

Method 2: Via a Web Browser

1. Connect your computer or smartphone to the extender's network. If you are using a computer, unplug the Ethernet cable if any.
2. Launch a web browser, enter <http://www.tplinkrepeater.net> in the address bar, and log in.
3. View or change extender settings as needed.



EasyMesh-Compatible

You can experience strong, stable, and seamless wireless connections throughout your home with EasyMesh, a whole home mesh standard that works across different access points for ultimate flexibility.

• Seamless Roaming

- Connects mobile devices to your routers or extenders that provide the best coverage. Devices compatible with EasyMesh also share a single Wi-Fi name so you stay connected in every room.

• One-Click Settings

- Press the WPS button on the main router and the extender within 2 minutes of each other, then the EasyMesh network will set up.

• Flexible Scalability

- Flexibly scale your home networking with different vendors,* different topologies, different Protocols and

different product categories.

TP-Link EasyMesh-compatible products can network with other devices that use EasyMesh. Failed connections may be due to firmware conflicts of different vendors. The EasyMesh-Compatible function is still being developed on some models and will be supported in subsequent software updates.

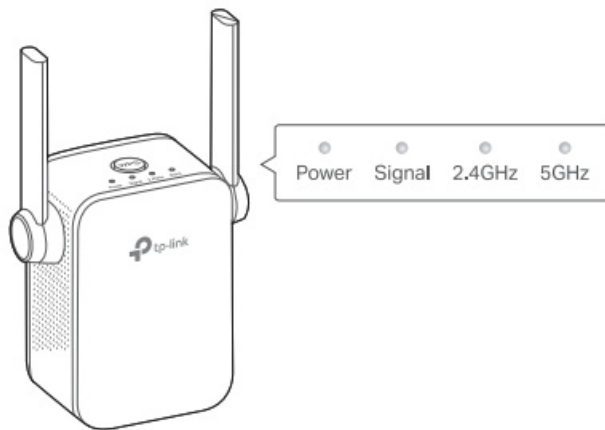
This product is compatible with standardized EasyMesh technology but has not obtained the Wi-Fi EasyMesh™ certification.

For more information, visit <https://www.tp-link.com/easymesh/>.



Scan for Setup Video

LED Explanation

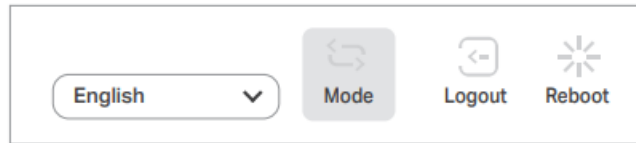


LED	Status	Indication (For Range Extender Mode)
Power	On/Off	The extender is on or off.
	Blinking	The system is starting up or firmware upgrade is in progress.
Signal	Solid blue	The extender is connected to your router's wireless network and is in a suitable location.
	Solid red	The extender is receiving a weak signal. Try relocating it closer to your router.
	Blinking	WPS connection is in progress.
	Off	No wireless connection is established.
2.4 GHz	On/Off	The extender is connected or not connected to the 2.4 GHz wireless network of your router.
5 GHz	On/Off	The extender is connected or not connected to the 5 GHz wireless network of your router.

Access Point Mode (AP Mode)

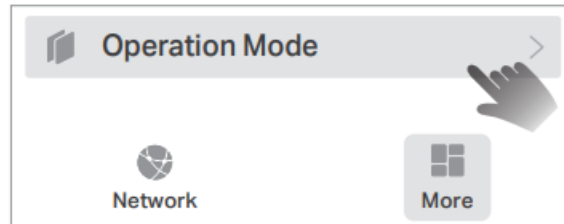
Stable wireless performance and wired connection with a main router required. To change your extender to Access Point Mode, do the following:

- By Web: Login → Find the Mode button on top. For details, refer to the user guide at <https://www.tp-link.com/support>.



- By Tether: Login to your extender → Find the Operation Mode

Note: Due to Tether app updates, images may differ from your actual user interface.

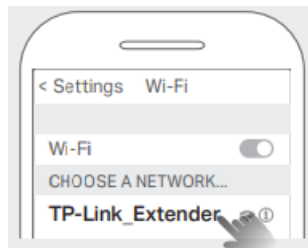


FAQ (Frequently Asked Questions)

Q1. What should I do if the Tether app cannot find my device during setup?

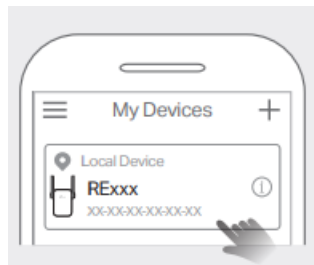
Try another method by following the steps below:

1. Connect your smartphone to the extender's network TP-Link_Extender.
- 2.



Launch the Tether app, and select your extender.

Tip: If you have connected to the extender's Wi-Fi but still cannot find your device, try turning off your cellular data.



3. Follow app instructions to complete the setup.

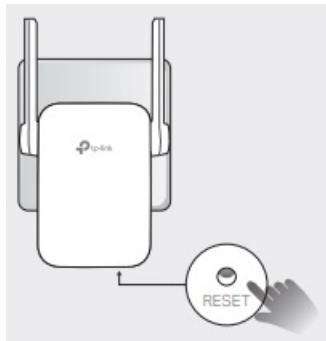
If you are still having problems, contact our technical support.

Q2. What should I do if the Signal LED doesn't turn solid on after completing setup via the Tether app or web browser?

- You may have entered incorrect Wi-Fi password for your host router during the configuration. Check the password and try again.

- Make sure the extender is close to your router, preferably within 16 feet, and away from large electrical appliances.
- If you have enabled wireless MAC filtering, wireless access control, or access control list (ACL) on your router, disable them first, then follow any method on the
- front page to complete the configuration.
- Try setting it up via the WPS button.
- Reset the extender and go through the configuration again. If you are still having problems, contact our technical support.

Q3. How do I reset the extender?



If you need more setup help, please visit <https://www.tp-link.com/support/faq/3074/>, or simply scan the QR code.



Safety Information

- Keep the device away from water, fire, humidity or hot environments.
- Do not attempt to disassemble, repair, or modify the device. If you need service, please contact us.
- Do not use the device where wireless devices are not allowed.

Please read and follow the above safety information when operating the device. We cannot guarantee that no accidents or damage will occur due to improper use of the device. Please use this product with care and operate at your own risk.

- TP-Link hereby declares that the device is in compliance with the essential requirements and other relevant provisions of directives 2014/53/EU, 2009/125/EC, 2011 /65/EU and (EU) 2015/863. The original EU Declaration of Conformity may be found at <https://www.tp-link.com/en/support/ce>

TP-Link hereby declares that the device is in compliance with the essential requirements and other relevant provisions of the Radio Equipment Regulations 2017.

The original UK Declaration of Conformity may be found at <https://www.tp-link.com/support/ukca>

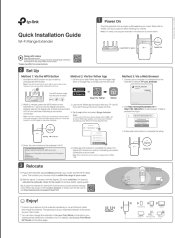


For technical support, replacement services, user manuals and other information, please visit <https://www.tp-link.com/support>, or simply scan the QR code.



AC750 Wi-Fi Range Extender Model: RE750C

Documents / Resources

	tp-link RE750C Wi-Fi Range Extender [pdf] User Guide RE750C Wi-Fi Range Extender, RE750C, Wi-Fi Range Extender, Range Extender, Extender
---	---

References

- [Trying to Configure the Range Extender? | TP-Link](#)
- [CE Regulatory Compliance | TP-Link](#)
- [TP-Link Product Support - Wireless Networking Equipment Support](#)
- [How to place your wireless Range Extender for optimal reception and performance | TP-Link](#)
- [Support Videos | TP-Link](#)
- [Regulatory Compliance | TP-Link](#)
- [User Manual](#)

[Manuals+](#), [Privacy Policy](#)

This website is an independent publication and is neither affiliated with nor endorsed by any of the trademark owners. The "Bluetooth®" word mark and logos are registered trademarks owned by Bluetooth SIG, Inc. The "Wi-Fi®" word mark and logos are registered trademarks owned by the Wi-Fi Alliance. Any use of these marks on this website does not imply any affiliation with or endorsement.