

 **tp-link**
tp-link InSight
S345 Bullet
Network Camera



tp-link InSight S345 Bullet Network Camera User Guide

[Home](#) » [tp-link](#) » tp-link InSight S345 Bullet Network Camera User Guide 

Contents

- 1 [tp-link InSight S345 Bullet Network Camera](#)
- 2 [Specifications](#)
- 3 [Appearance](#)
- 4 [Installation](#)
- 5 [Configuration](#)
- 6 [Appendix FAQ](#)
- 7 [Documents / Resources](#)
 - 7.1 [References](#)
- 8 [Related Posts](#)



tp-link InSight S345 Bullet Network Camera



Specifications

- Model: InSight Series Bullet Network Camera
- Available Models: InSight S345, InSight S355, InSight S385
- Features: Built-in Microphone, microSD Card Slot, RJ45 Network Interface, Alarm Interface, Power Supply Interface
- Optional Features: Waterproofing, Grounding Terminal

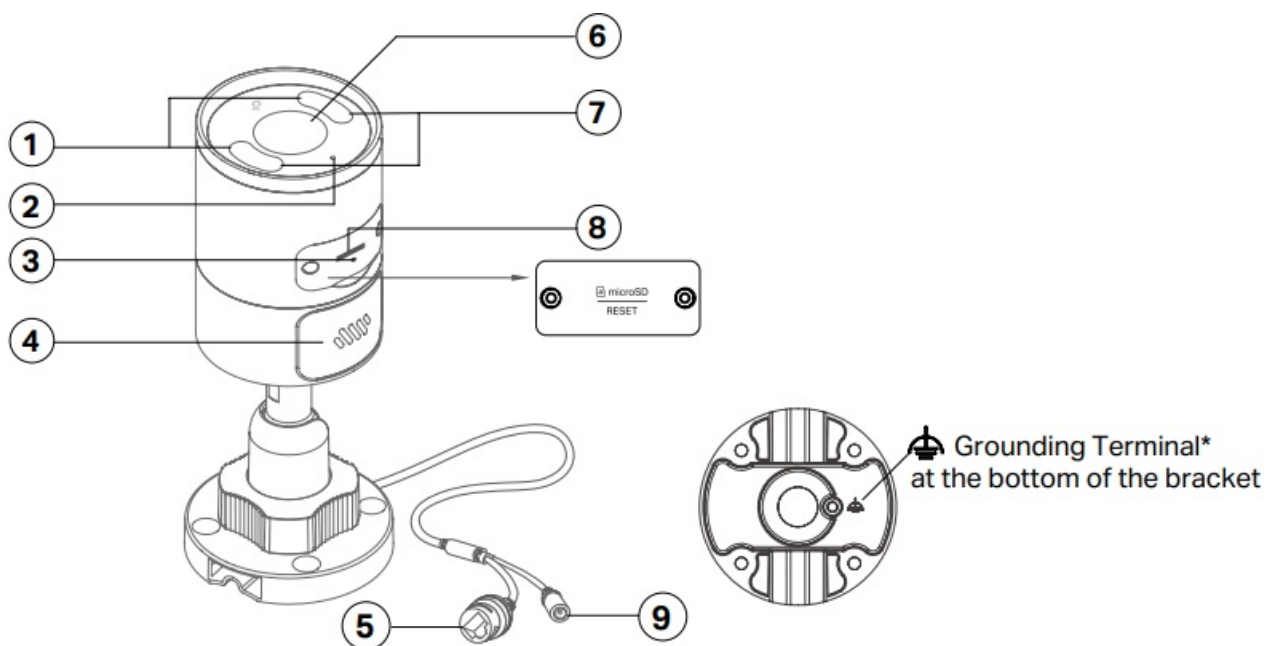
*Images may differ from actual products.

InSight S345S is used for demonstration in this guide.

Appearance

The figure is for demonstration purposes only. Your device may differ in appearance from the depicted.

InSight S345



1. IR LED
2. Microphone
3. Reset: Unfasten the two fixed screws to remove the cover. Press for 5 seconds to reset the camera to factory settings.
4. Speaker
5. RJ45 Network Interface (supports PoE)
6. Lens
7. White LED
8. microSD Card Slot: Unfasten the two fixed screws to remove the cover. Insert a microSD card for local storage. Initialize the SD card via VIGI app or other management tools before recording videos.
9. Power Supply Interface

The camera comes with a lightning protection mechanism. You can ground the camera with ground wire.

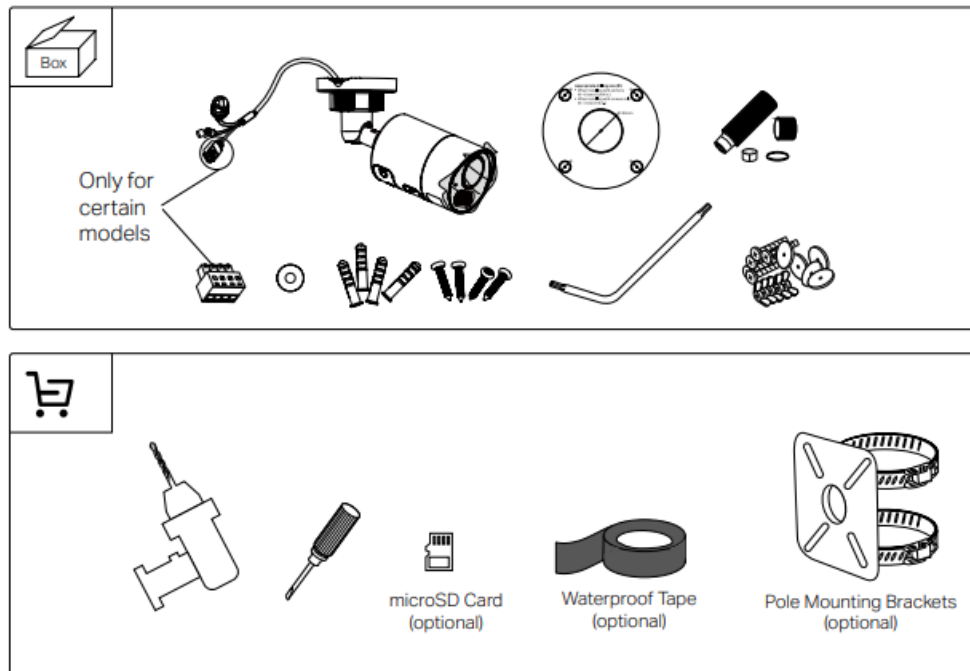
Installation

Safety First

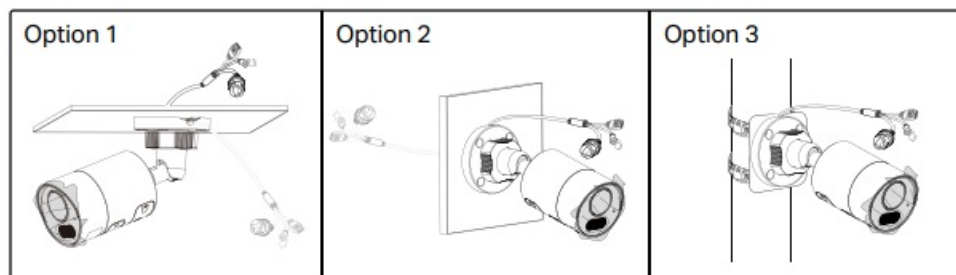
- Make sure your power supply matches your camera. The power source should comply with Power Source Class 2 (PS2) or Limited Power Source (LPS) of IEC 62368-1.
- Make sure that the wall is strong enough to withstand 4 times the weight of the camera and mounting bracket.
- Make sure the device is not connected to a power source when mounting and connecting cables.
- If you are uncertain or uncomfortable performing the installation, consult a qualified electrician.

Mount the Camera

1. Get ready

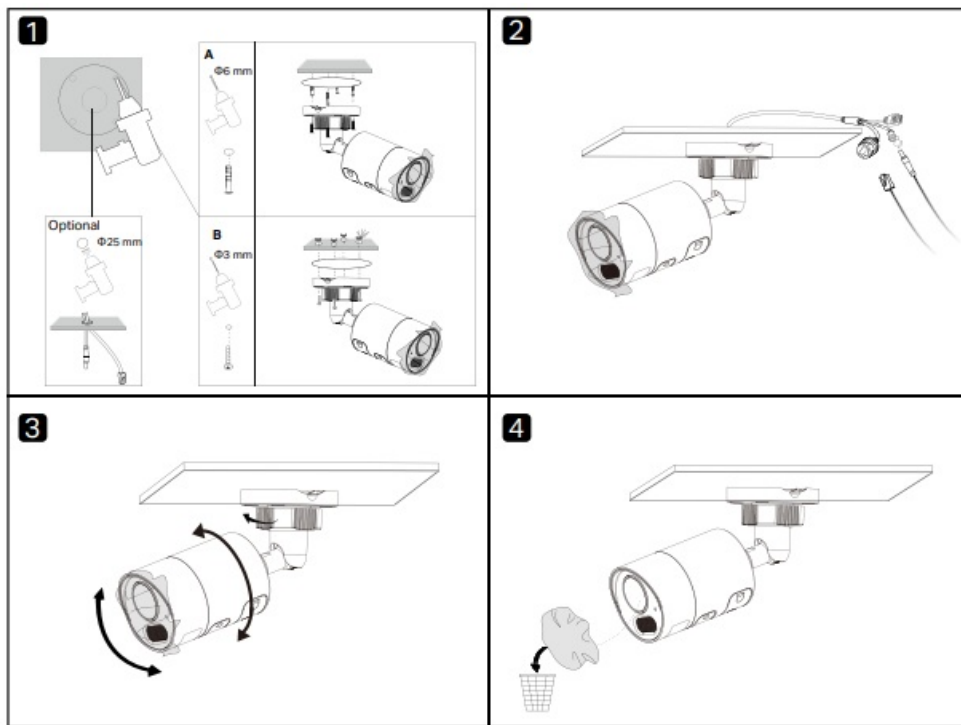


2. Choose the mounting method.

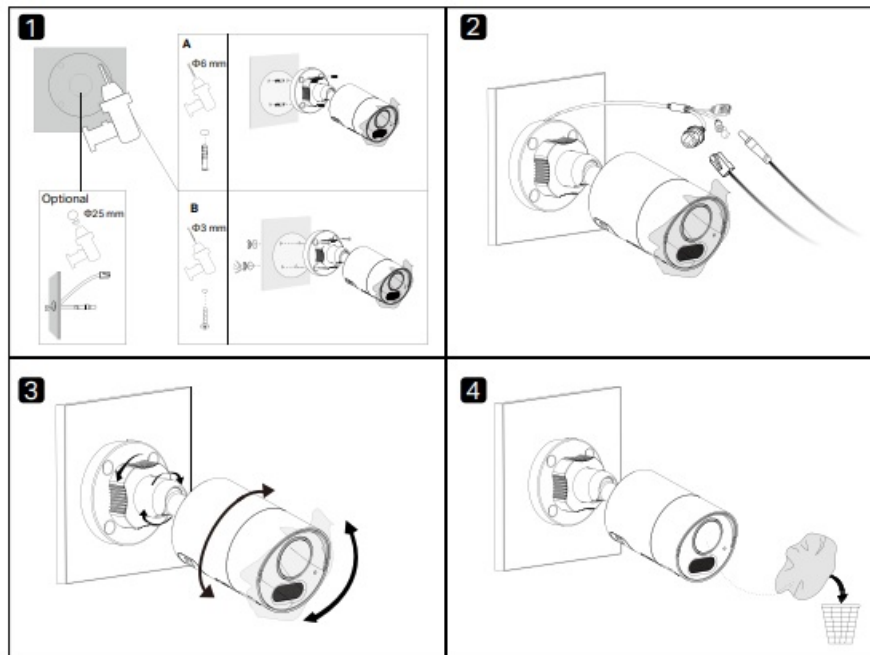


3. Mount the camera according to your desired mounting method.

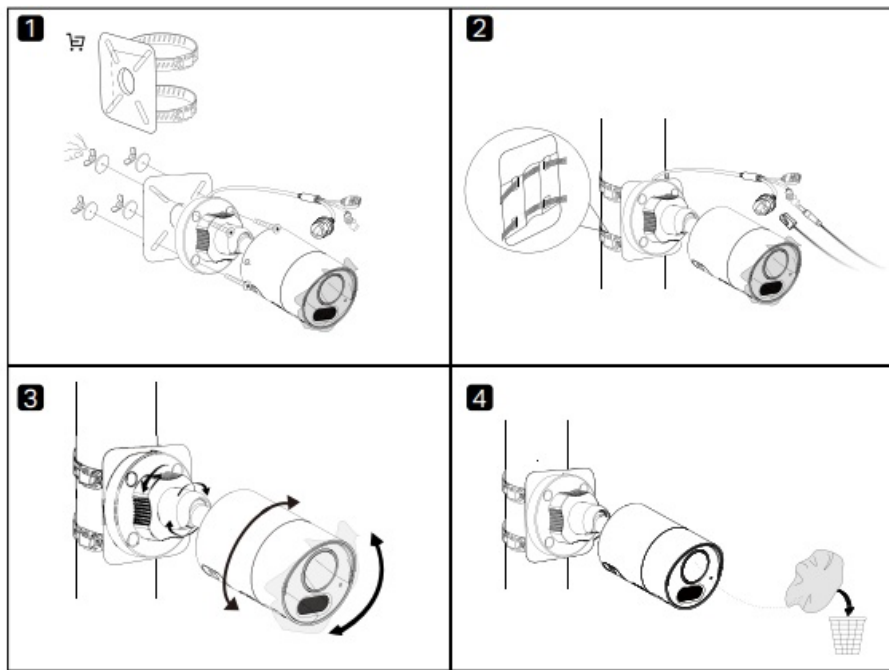
- Option 1 Ceiling Mounting



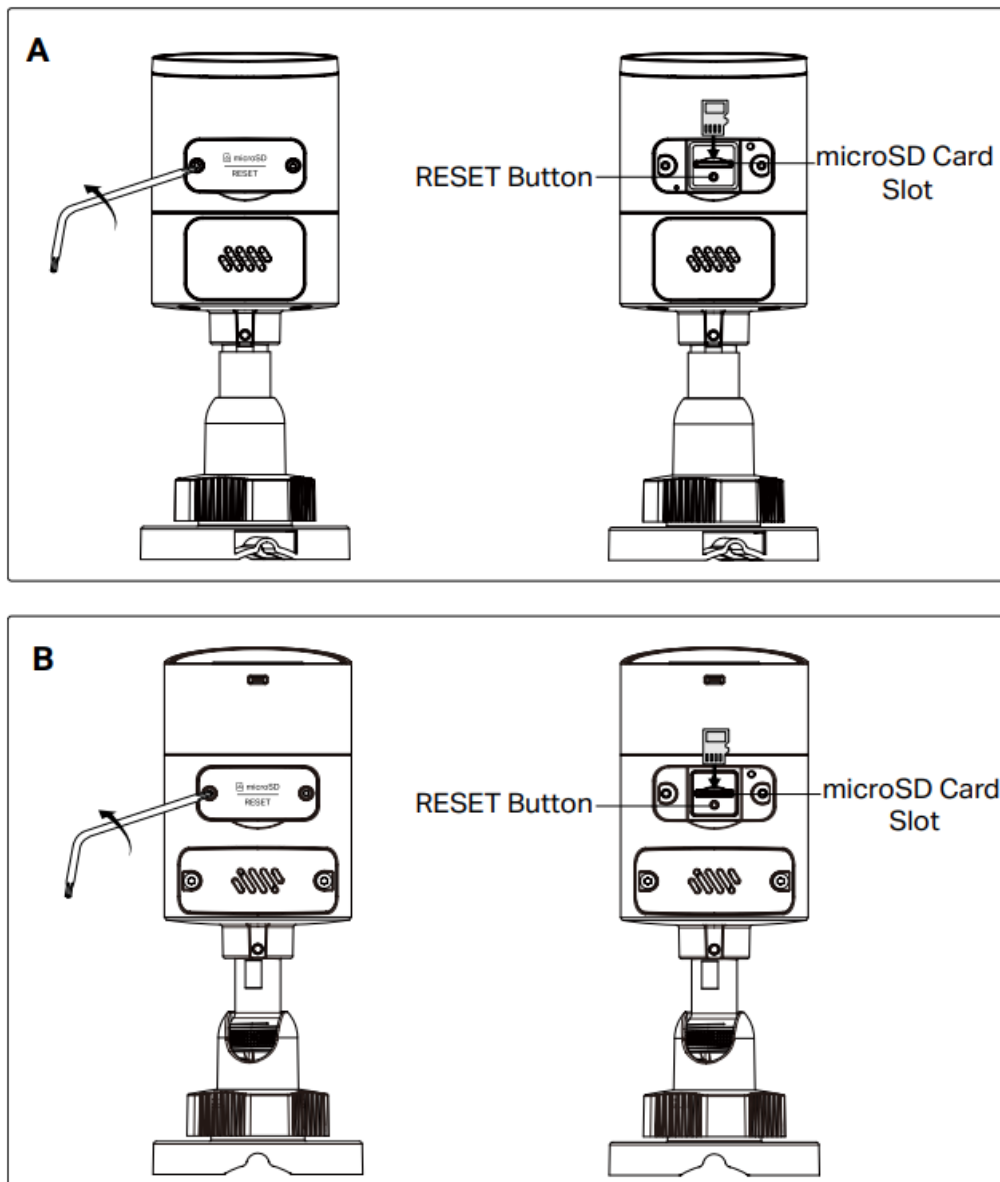
- Option 2 Wall Mounting



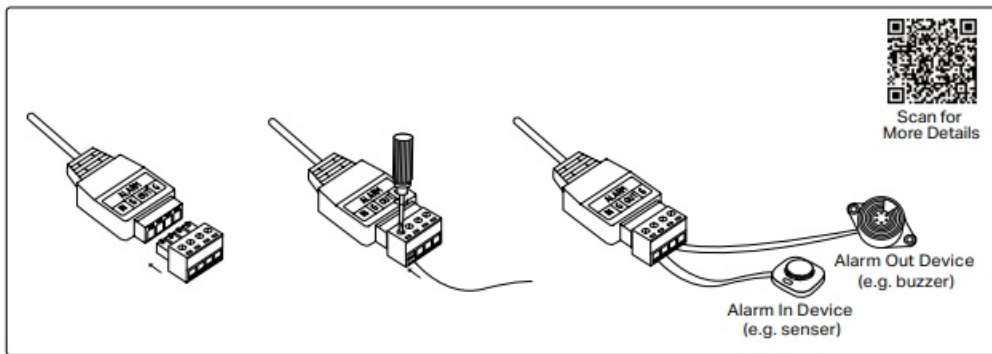
- Option 3 Pole Mounting



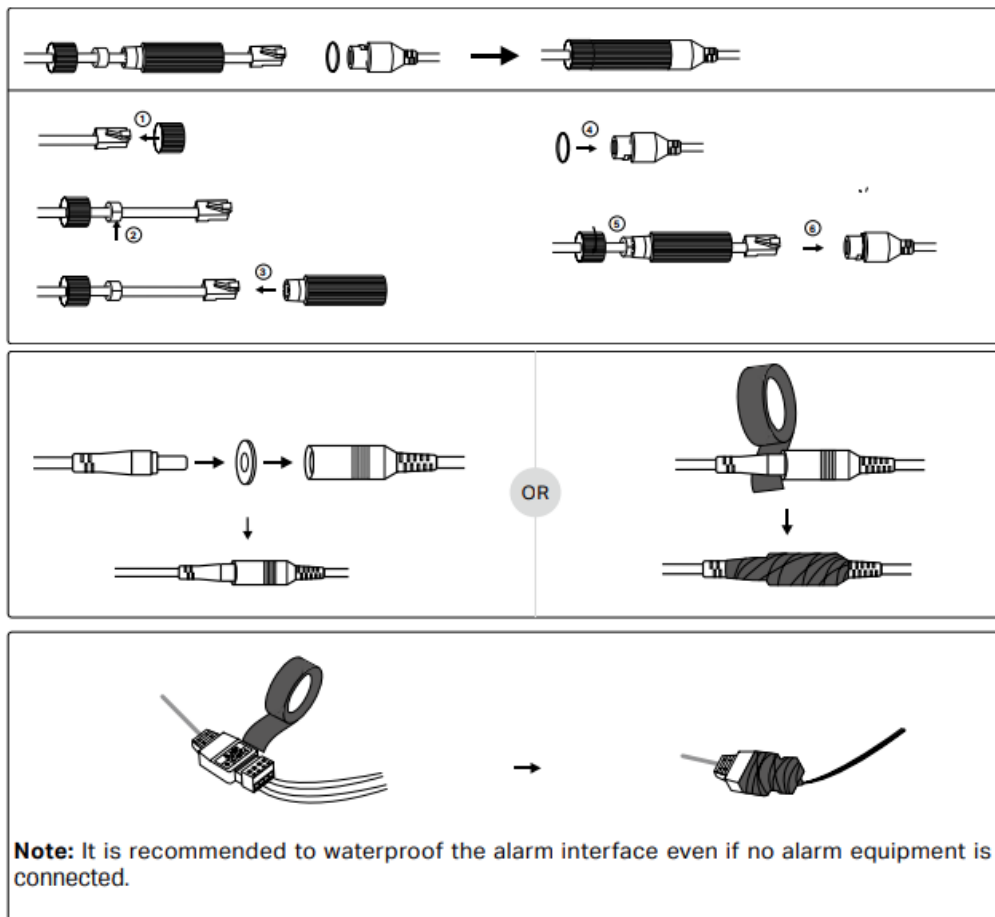
Install microSD Card (Optional)



Connect Alarm (Optional)

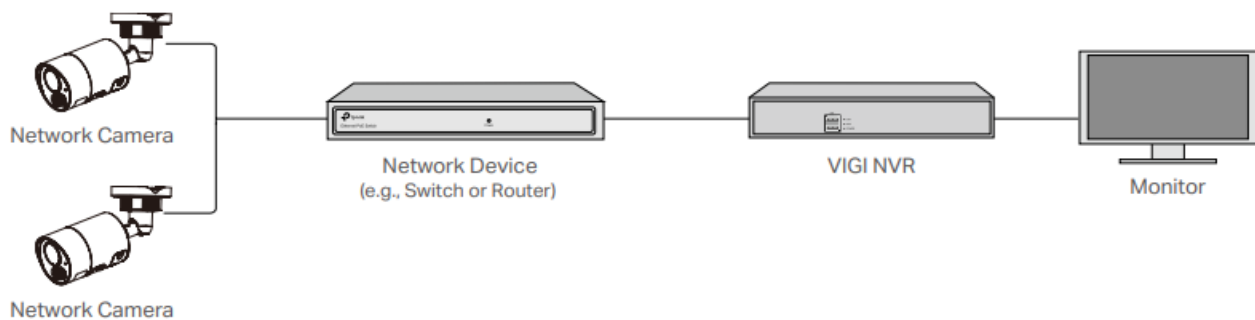


Waterproof (Optional)



Configuration

Here is a typical network topology. You can add and manage your devices via any of the methods.



Via NVR

The camera works with an NVR for easier batch access and management. Here we use a VIGI NVR as an

example.

1. Connect your cameras to the same network as your NVR.
2. Power on your cameras with the PoE power supply or an external power supply.
3. Right click on the Live View screen on the monitor, and click Add Camera.
4. Select your camera and click + to add your camera directly. If you have disabled Plug and Play on your NVR, create a password or use a preset password for your camera.

Note:

If you are using your cameras with other NVR brands, follow the steps below.

1. Power on your cameras and connect them to the network.
2. Activate the cameras using the TP-Link VIGI app or web management page.
3. Refer to the NVR's User Manual to add cameras.

Via VIGI App

You can remotely view live video, manage device, and get instant alerts via VIGI app.

1. Download and install the latest TP-Link VIGI app.



2. Open the app and log in with your TP-Link ID. If you don't have an account, sign up first.
3. Tap the + button on the top right and follow the app instructions to add your NVR.

Via Web

You can view live video and modify camera settings via a web browser.

1. Find the camera's IP address on your router's client page.
2. On your local computer, open a web browser and enter <https://camera's IP address> (<https://192.168.0.60> by default).
3. Select your Country/Region and Time Zone.
4. Set a password to activate the camera.

Appendix FAQ

What can I do if no cameras are discovered?

Refresh to discover your camera again. Make sure the camera is powered on. Make sure your camera and NVR/computer are in the same subnet. If not, use the VIGI Config Tool to set camera's network parameters. Try to add your camera manually. For other NVR brands, make sure you have activated the camera by setting a password via the TP-Link VIGI app or web management page.

What should I do if I forgot the password of the camera?


You can check the password of the camera via VIGI NVR, or its web management page. For more details, refer to the corresponding user guides. You can reset the camera and activate it again. During the activation process, you can set a new password.

What should I do if the SD card is not working properly?

Make sure you are using a microSD card. Unplug the SD card and insert it again. Make sure you have inserted the SD card correctly. It's recommended to use a Class 10 microSD card or higher, with storage from 8 GB to 512 GB. Make sure you have initialized the microSD card via the TP-Link VIGI app or web management page. If the problem still persists, contact our technical support.

If you have more questions, please visit <https://www.tp-link.com/support/faq/2850/>.

Documents / Resources

 Quick Start Guide <small>InSight Series Bullet Network Camera</small> <small>Images may differ from actual products. Copyright © 2020 TP-LINK. All rights reserved. TP-LINK is a registered trademark of TP-LINK.</small>	tp-link InSight S345 Bullet Network Camera [pdf] User Guide InSight S345, InSight S345 Bullet Network Camera, Bullet Network Camera, Network Camera, Camera
--	--

References

- [User Manual](#)

[Manuals+](#), [Privacy Policy](#)

This website is an independent publication and is neither affiliated with nor endorsed by any of the trademark owners. The "Bluetooth®" word mark and logos are registered trademarks owned by Bluetooth SIG, Inc. The "Wi-Fi®" word mark and logos are registered trademarks owned by the Wi-Fi Alliance. Any use of these marks on this website does not imply any affiliation with or endorsement.