

# tp-link EAP723 V2 Ceiling Mount Access Point Installation Guide

### Contents

- 1 EAP723 V2 Ceiling Mount Access Point
  - 1.1 Quick Installation Guide Ceiling Mount Access Point
  - 1.2 Package Contents
  - 1.3 Installation
  - 1.4 Safety Information
  - 1.5 More Resources
- 2 Documents / Resources
  - 2.1 References
- 3 Related Posts

## EAP723 V2 Ceiling Mount Access Point



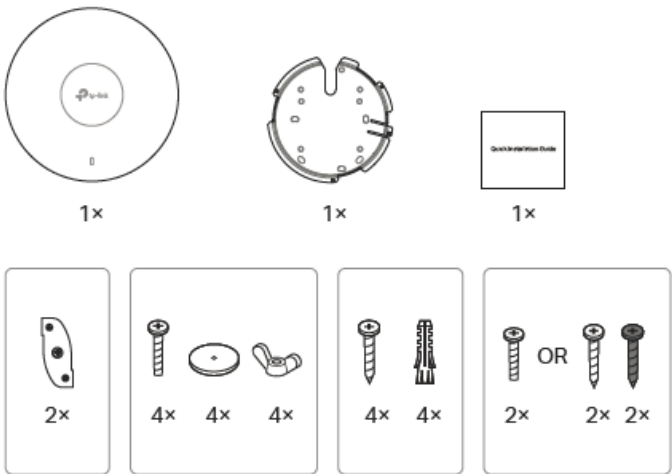
### Quick Installation Guide Ceiling Mount Access Point



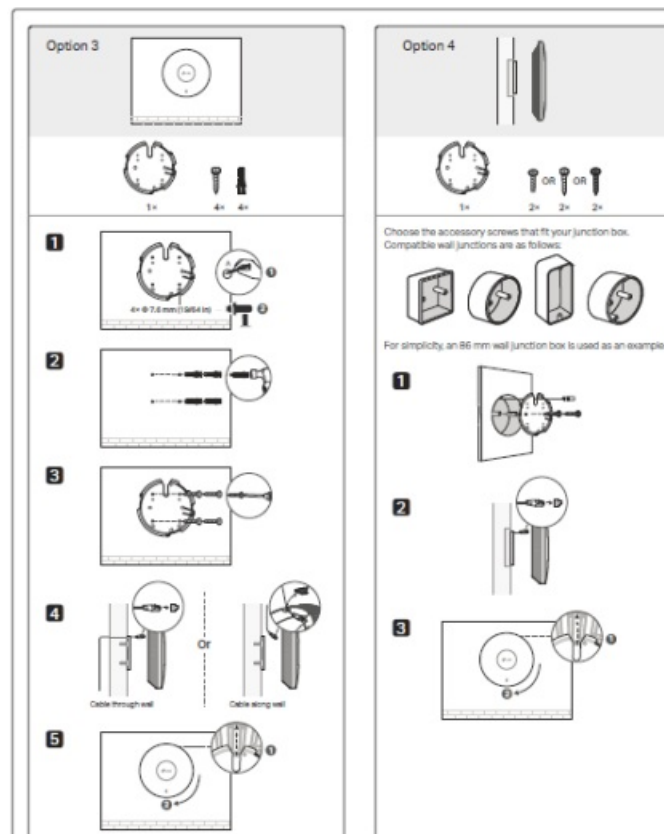
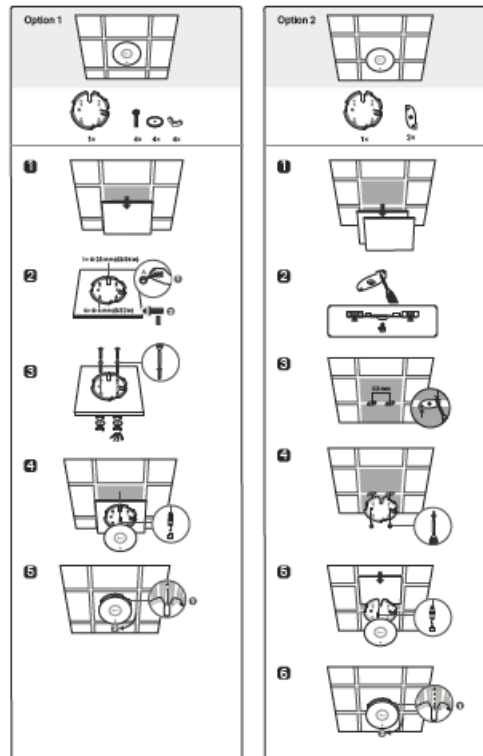
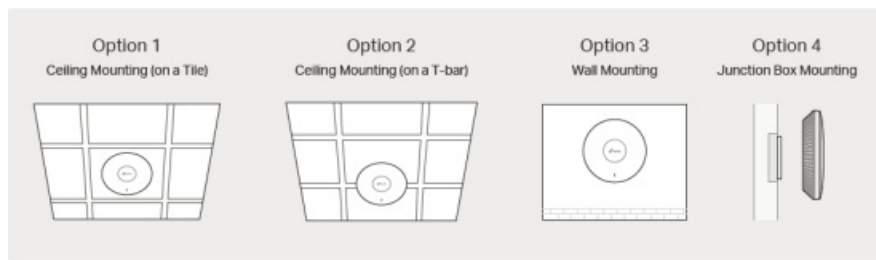
Scan for  
EAP Start Guide

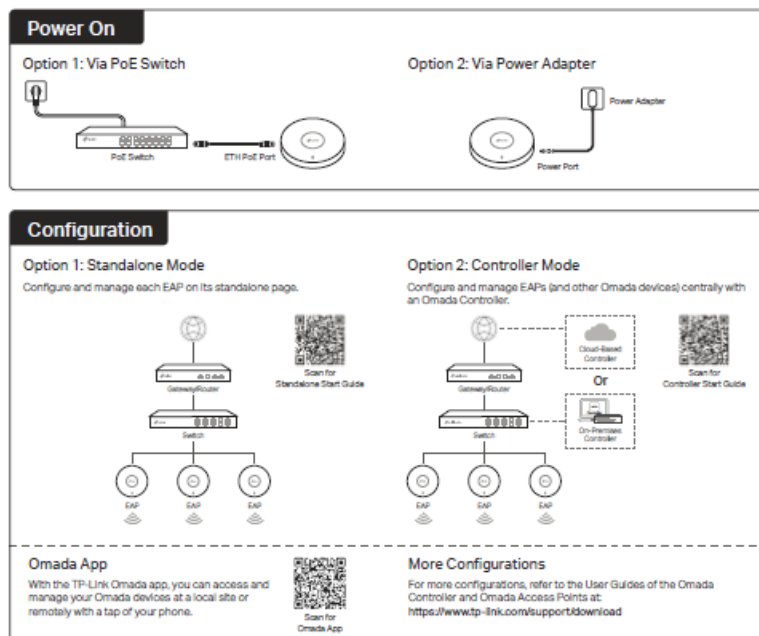
Note: EAP723 V2 is used as an example throughout the guide. Images may differ from your actual product.  
©2025 TP-Link 7100000026 REV2.0.0

### Package Contents



# Installation





## Safety Information

- Keep the device away from water, fire, humidity or hot environments.
- Do not attempt to disassemble, repair, or modify the device. If you need service, please contact us.
- Do not use the device where wireless devices are not allowed.
- The EAP can be powered only by a power adapter or a PSE device (such as a PoE switch) which complies with Power Source Class 2 (PS2) or Limited Power Source (LPS) defined in the standard of IEC 62368-1.

TP-Link hereby declares that the device is in compliance with the essential requirements and other relevant provisions of directives 2014/53/EU, 2009/125/EC, 2011 /65/EU, and (EU) 2015/863. The original EU Declaration of Conformity may be found at <https://www.tp-link.com/en/support/ce/>

TP-Link hereby declares that the device is in compliance with the essential requirements and other relevant provisions of the Radio Equipment Regulations 2017. The original UK Declaration of Conformity may be found at <https://www.tp-link.com/support/ukca/>

## More Resources

**Main Site** <https://www.tp-link.com>

**Setup Videos** <https://www.tp-link.com/support/setup-video>

**Download Center** <https://community.tp-link.com/business>

**Business Community** <https://www.tp-link.com/support/download>

**Technical Support** <https://www.tp-link.com/support/contact-technical-support>

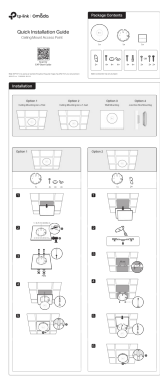
## Warranty

For details on the warranty period, policy, and procedures, visit <https://www.tp-link.com/support/replacement-warranty>.

## Support

For technical support, user guides, and other information, please visit <https://www.tp-link.com/support>, or simply scan the QR code.

## Documents / Resources

|  |   |
|--|---|
|  | <p><a href="#">tp-link EAP723 V2 Ceiling Mount Access Point</a> [pdf] Installation Guide</p> <p>EAP723 V2 Ceiling Mount Access Point, EAP723 V2, Ceiling Mount Access Point, Mount Access Point, Access Point</p> |
|--|---|

## References

- [🔗 TP-Link: Your Smart Home, Simplified](#)
- [🔗 CE Regulatory Compliance | TP-Link](#)
- [🔗 | TP-Link](#)
- [🔗 TP-Link Product Support - Replacement and Warranty](#)
- [🔗 Support Videos | TP-Link](#)
- [🔗 Regulatory Compliance | TP-Link](#)
- [User Manual](#)

### Manuals+, Privacy Policy

This website is an independent publication and is neither affiliated with nor endorsed by any of the trademark owners. The "Bluetooth®" word mark and logos are registered trademarks owned by Bluetooth SIG, Inc. The "Wi-Fi®" word mark and logos are registered trademarks owned by the Wi-Fi Alliance. Any use of these marks on this website does not imply any affiliation with or endorsement.