



tp-link AX6000 8-Stream Wi-Fi 6 Router Installation Guide

[Home](#) » [tp-link](#) » tp-link AX6000 8-Stream Wi-Fi 6 Router Installation Guide 

Contents

- 1 [tp-link AX6000 8-Stream Wi-Fi 6 Router](#)
- 2 [Product Information](#)
- 3 [Product Usage Instructions](#)
 - 3.1 [Connect the Hardware](#)
- 4 [Set Up the Network](#)
 - 4.1 [Method ONE: Via TP-Link Tether App](#)
 - 4.2 [Method TWO: Via a Web Browser](#)
 - 4.3 [Mount the Router](#)
- 5 [Button Explanation](#)
- 6 [Need Help?](#)
- 7 [Documents / Resources](#)
 - 7.1 [References](#)



tp-link AX6000 8-Stream Wi-Fi 6 Router

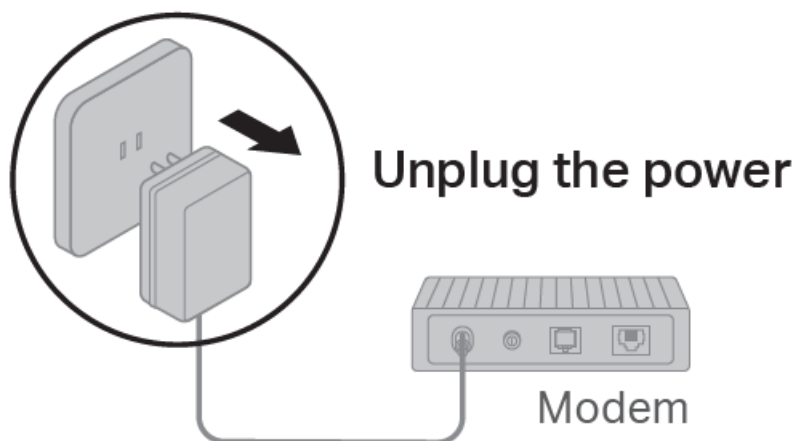


Product Information

The product is the TP-Link Archer AX3000 AX3000 Gigabit Wi-Fi Router. It is a wireless router that provides high-speed internet connectivity. The router has a 2.5 Gbps WAN/LAN port and a 1 Gbps WAN/LAN port for connecting to the modem. It supports both 2.4GHz and 5GHz frequencies for wireless connections.

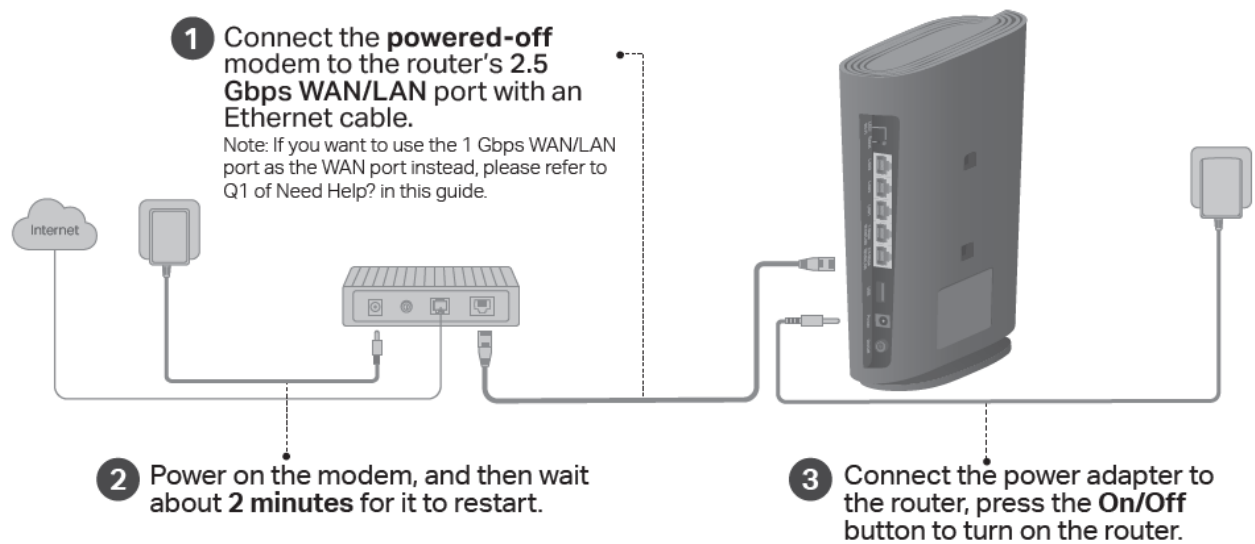
Product Usage Instructions

If your internet comes from an Ethernet outlet instead of a DSL / Cable / Satellite modem, connect the router's 2.5 Gbps WAN/LAN port to it, then follow steps 3 and 4 to complete the hardware connection. *Image may differ from actual product.



Connect the Hardware

1. Unplug the power to turn off your modem, if any, and remove the backup battery if it has one.
2. If your internet comes from an Ethernet outlet instead of a DSL/Cable/Satellite modem, connect the router's 2.5 Gbps WAN/LAN port to it.
3. Connect the powered-off modem to the router's 2.5 Gbps WAN/LAN port with an Ethernet cable.



4. Power on the modem and wait about 2 minutes for it to restart.
5. Connect the power adapter to the router and press the On/Off button to turn on the router.
6. Verify that the hardware connection is correct by checking the following LEDs: Power, 2.4GHz, 5GHz, and Internet. All LEDs should be on.

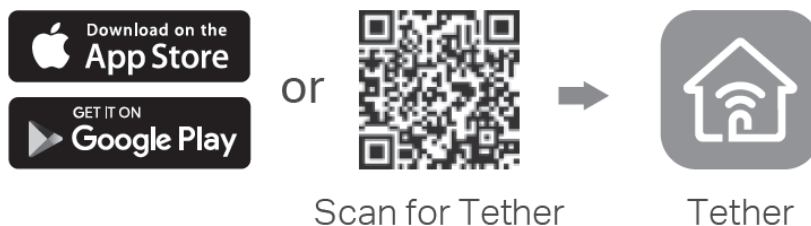


Note: If the 2.4GHz LED and 5GHz LED are off, press and hold the LED/Wi-Fi button on the back for more than 2 seconds. Both the LEDs should turn solid on.

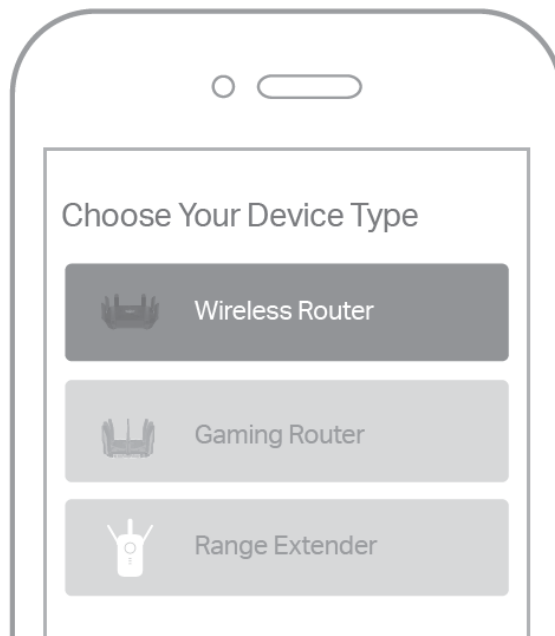
Set Up the Network

Method ONE: Via TP-Link Tether App

1. Download the TP-Link Tether app.



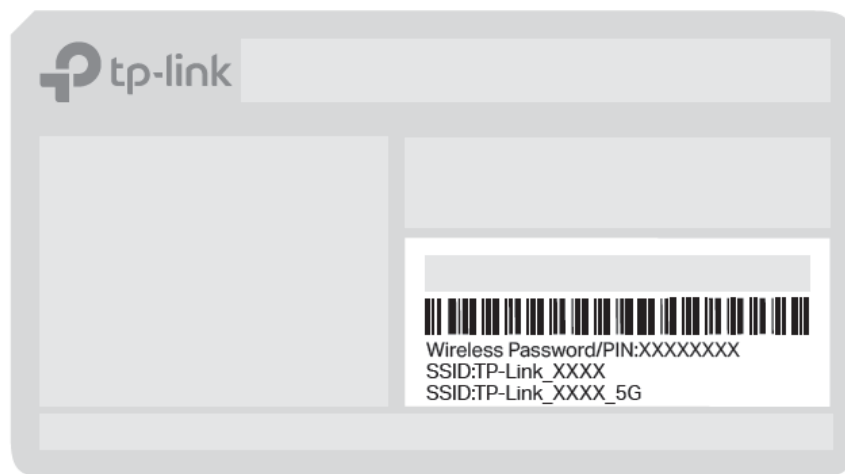
2. Open the Tether app and log in with your TP-Link ID. If you don't have an account, create one first.
3. Tap the button in the Tether app and select Wireless Router > Standard Routers. Follow the steps to complete the setup and connect to the internet.



To enjoy a more complete service from TP-Link, bind your TP-Link ID to the router.

Method TWO: Via a Web Browser

1. Connect your device to the router wirelessly or with an Ethernet cable.
2. Launch a web browser and enter "<http://tplinkwifi.net>" or "<http://192.168.0.1>" in the address bar.



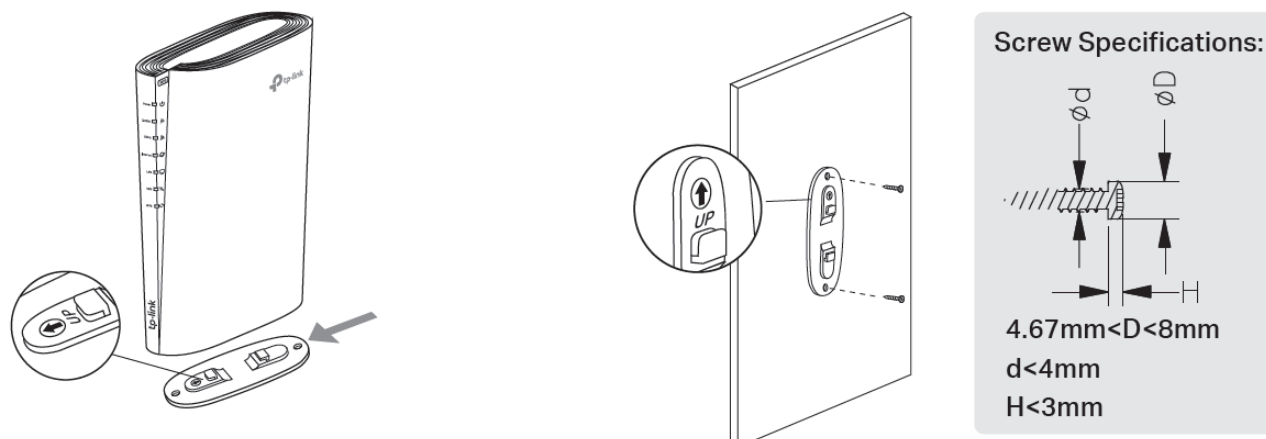
3. Create a password to log in.
4. Follow the step-by-step instructions to set up the internet connection and register for the TP-Link Cloud service.



Mount the Router

Option ONE: Desktop Mounting

1. Attach the router on the bracket provided and slide to lock into the bracket.
2. Place the router vertically on a flat surface (such as a desktop or shelf) that is out of children's reach.



Option TWO: Wall Mounting

1. Mount the bracket on the wall in the correct direction with two screws (not provided). The screw length should be at least 20 mm to withstand the weight of the product.
2. Place the router vertically on a flat surface such as a desktop or shelf that is out of children's reach.
3. Attach the router on the bracket as shown below, and slide to lock into the bracket.



For technical support, replacement services, user guides, and other information, please visit <https://www.tp-link.com/support>

TP-Link HomeShield

TP-Link HomeShield premium security services keep your home network safe with cutting-edge features for network. Download the Tether app to enjoy HomeShield features.

Network Protection

Detect cyber threats to keep your privacy and connected devices well protected.

Parental Controls

Manage online time and block inappropriate content to keep families healthy online.

Quality of Service (QoS)

Prioritize your bandwidth needs to get a better networking experience.

Comprehensive Reports

Gain full statistics and insights to help you know your home network better.



USB Applications

With the USB port, it's easy to share files and media with multiple devices. Visit <https://www.tp-link.com/app/usb> to learn more about the USB applications.

- **Local Storage Sharing:** Share files from the USB drive with devices on your home network
- **Media Server:** Play media from the USB drive on your computer and smart devices
- **Remote Access:** Access the USB drive when you are away from home

Button Explanation

- **LED/Wi-Fi Button**
 - **LED:** Press the button for 1 second to turn on/off the LEDs.
 - **Wi-Fi:** Press and hold the button for more than 2 seconds, then release the button to turn on or off the wireless function of your router.
- **Reset Button**
 - Press and hold the button for about 6 seconds until the Power LED blinks to reset the router to its factory default settings.
- **WPS Button**
 - Press the button for 1 second, and immediately press the WPS button on your client to start the WPS process.

Need Help?

- **Q1. What should I do if I want to use 1 Gbps WAN/LAN port for internet service?**
 - Connect to the 1 Gbps WAN/LAN port with an Ethernet cable. During the quick network setup, select the 1 Gbps WAN/LAN port as the Internet port. Or after the network setup, you can go to Tools > Internet Connection > Internet Port (Tether app) or Internet > Internet Port (web management page) to change it.
- **Q2. What should I do if I can't access the web management page?**
 - Reboot your router and try again.
 - If the computer is set to a static IP, change its settings to obtain an IP address automatically.
 - Verify that <http://tplinkwifi.net> is correctly entered in the web browser. Alternatively, enter <http://192.168.0.1> or <http://192.168.1.1> in the web browser.
 - Use another web browser and try again.

- Disable and enable the network adapter in use.

• **Q3. What should I do if I can't access the internet?**

- Power off your modem for about 5 minutes, then power it on and check the internet. If your modem has more than one Ethernet port, keep other ports unconnected.
- Check if the internet is working normally by connecting a computer directly to the modem via an Ethernet cable. If it is not, contact your internet service provider.
- Log in to the web management page, and go to the Network Map page to check whether the internet IP address is valid or not. If it's valid, go to Advanced > Network > Internet, click Advanced Settings, select Use the Following DNS Addresses, set the primary DNS to 8.8.8.8, and set the secondary DNS to 8.8.4.4. If it is not, check the hardware connection or contact your internet service provider.
- For cable modem users, log in to the web management page of the router and go to Advanced > Network > Internet > MAC Clone. Select Clone Current Device MAC and click SAVE. Then reboot both the modem and the router.

• **Q4. What should I do if I forget my wireless password?**


- If you have not changed the default wireless password, it can be found on the label at the bottom of the router.
- Connect a computer directly to the router using an Ethernet cable. Log in to the router's web management page at <http://tplinkwifi.net>, and go to the Wireless page to retrieve or reset your wireless password.

1. Keep the device away from water, fire, humidity or hot environments.
2. Do not attempt to disassemble, repair, or modify the device. If you need service, please contact us.
3. Do not use any other chargers than those recommended.
4. Do not use damaged charger or USB cable to charge the device.
5. Do not use the device where wireless devices are not allowed.
6. Adapter shall be installed near the equipment and shall be easily accessible.

For technical support, replacement services, user guides, and other information, please visit <https://www.tp-link.com/support>.

©2022 TP-Link 7106509805 REV1.0.0

Documents / Resources

	tp-link AX6000 8-Stream Wi-Fi 6 Router [pdf] Installation Guide AX6000 8-Stream Wi-Fi 6 Router, AX6000 8-Stream, Wi-Fi 6 Router, 6 Router, Router
---	--

References

- [🔗 Trying to configure the Router? | TP-Link](#)
- [🔗 Flexible USB Sharing - Access and Share files anywhere you are!](#)
- [🔗 HomeShield | TP-Link](#)
- [🔗 TP-Link Product Support - Wireless Networking Equipment Support](#)

