




## tp-link AX3000 WiFi 6 One Mesh Router Instruction Manual

[Home](#) » [tp-link](#) » tp-link AX3000 WiFi 6 One Mesh Router Instruction Manual 

### Contents

- [1 tp-link AX3000 WiFi 6 One Mesh Router](#)
- [2 Connect the Hardware](#)
- [3 Set Up the Network](#)
- [4 Router Information](#)
- [5 Button Explanation](#)
- [6 Documents / Resources](#)
  - [6.1 References](#)
- [7 Related Posts](#)



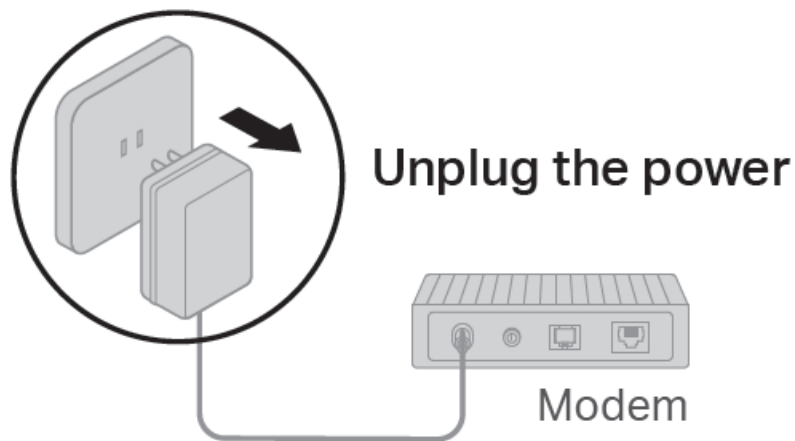
### tp-link AX3000 WiFi 6 One Mesh Router



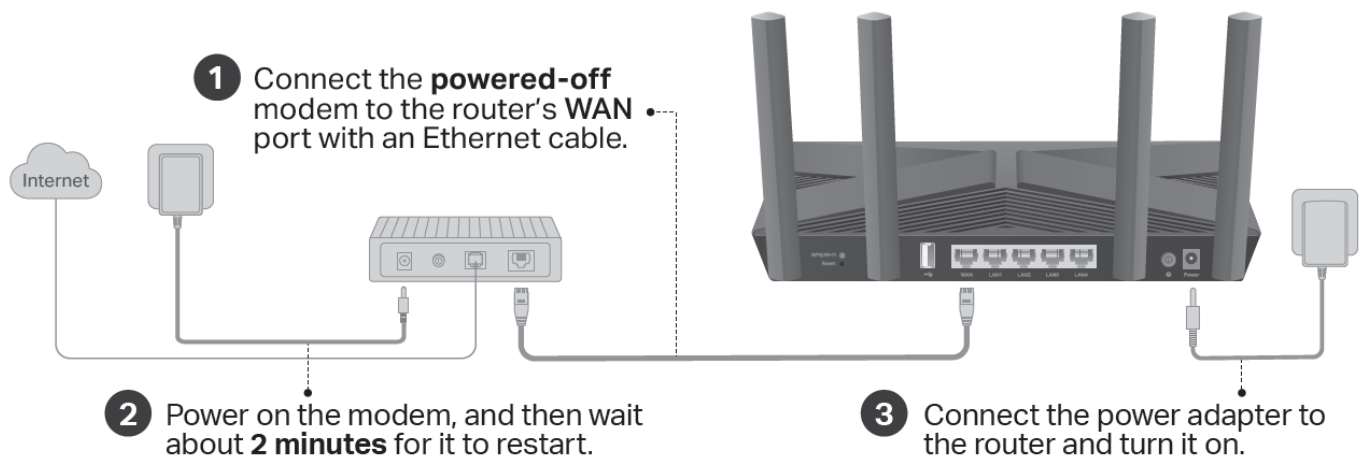
### Connect the Hardware

- Unplug the power to turn off your modem, if any, and remove the backup battery if it has one.

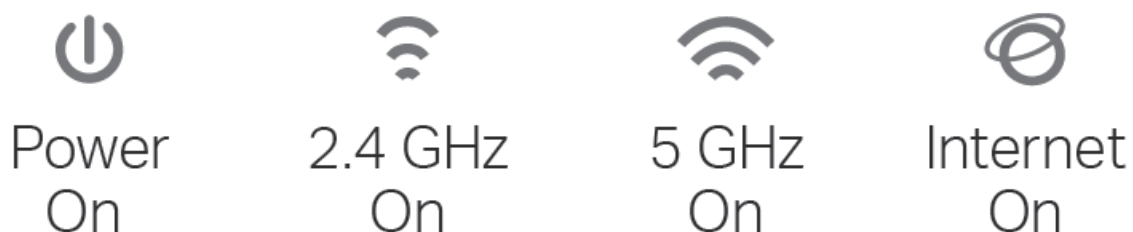
- Refer to Q5 of Need Help? to place the router for optimal Wi-Fi performance.



If your internet comes from an Ethernet outlet instead of a DSL / Cable / Satellite modem, connect the router's WAN port to it, then follow steps 3 and 4 to complete the hardware connection.  
Image may differ from actual product.



1. Connect the powered-off modem to the router's WAN port with an Ethernet cable.
2. Power on the modem, and then wait about 2 minutes for it to restart.
3. Connect the power adapter to the router and turn it on.
4. Verify that the hardware connection is correct by checking the following LEDs.

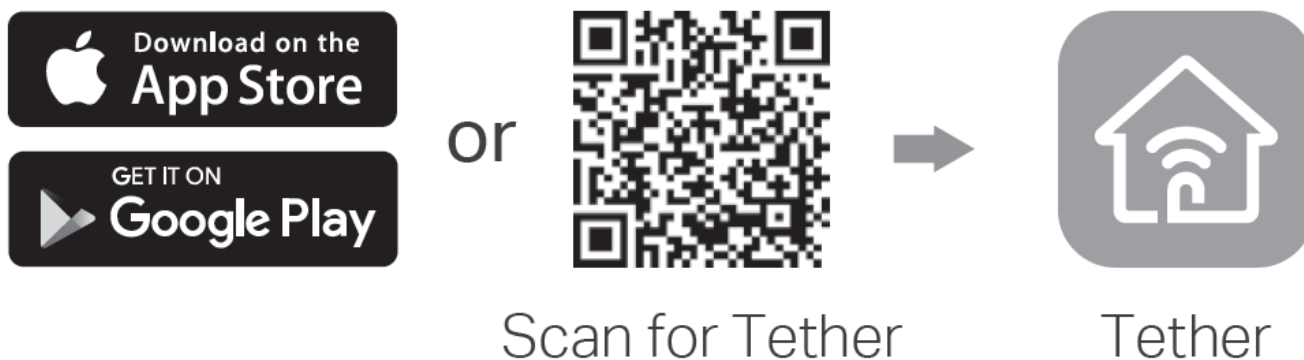


**Note:** If the 2.4 GHz and 5 GHz LEDs are off, press and hold the WPS/Wi-Fi button on the back for more than 2 seconds. The LEDs should turn solid on.

## Set Up the Network

### Method ONE: Via TP-Link Tether App

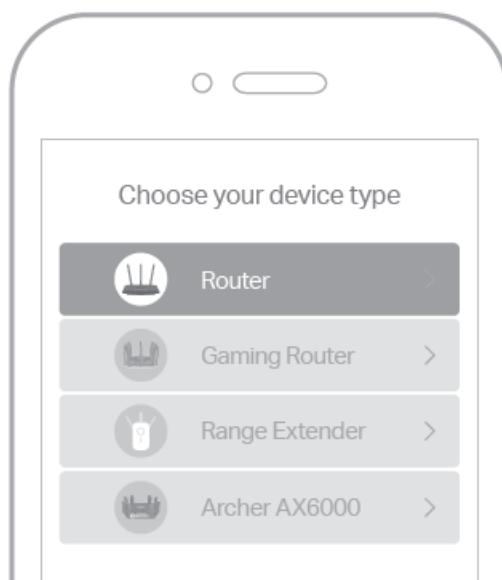
## 1. Method ONE: Via TP-Link Tether App



## 2. Open the Tether app and log in with your TP-Link ID.

**Note:** If you don't have an account, create one first.

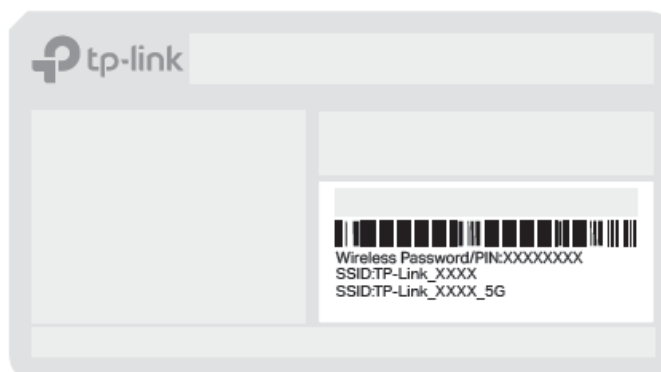
## 3. Tap the **+** button in the Tether app and select Router > Wireless Router. Follow the steps to complete the setup and connect to the internet.



## Method TWO: Via a Web Browser

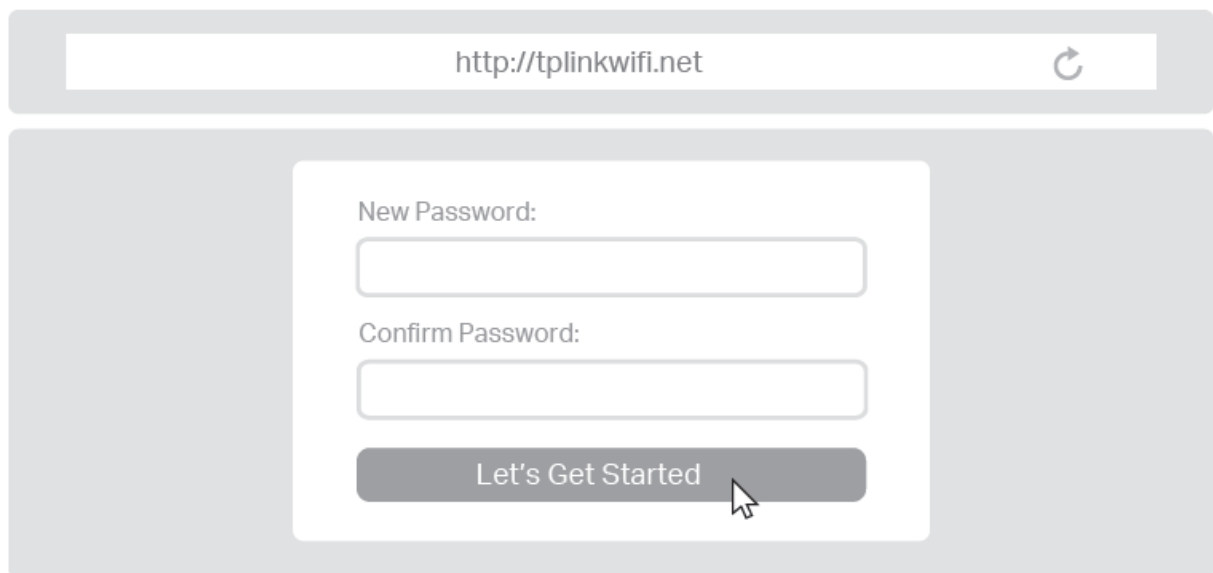
## 1. Connect your device to the router wirelessly or with an Ethernet cable.

The default wireless network names (SSIDs) and password are printed on the label at the bottom of the router.



## 2. Launch a web browser, and enter <http://tplinkwifi.net> or <http://192.168.0.1> in the address bar. Create a password to log in.

**Note:** If the login window does not appear, please refer to Q1 of Need Help? in this guide.



3. Follow the step-by-step instructions to set up the internet connection and register for the TP-Link Cloud service.

## Router Information

### Do More with Your Router

The router supports various features, including Access Point Mode, Guest Network, Parental Controls, QoS and more.



#### Access Point Mode

The router can work as an access point, transforming your existing wired network to a wireless one.



#### Guest Network

Provide Wi-Fi access for guests without disclosing your main network.



#### USB Applications

With the USB port, it's easy to share files and media with multiple devices. Visit <https://www.tp-link.com/app/usb> to learn more about the USB applications.



#### Parental Controls

Manage online time and block inappropriate content to keep families healthy online.



#### Quality of Service (QoS)

Prioritize your bandwidth needs to get a better networking experience.

For detailed instructions, refer to the router's user guide at <https://www.tp-link.com/support>.

## Button Explanation

- **WPS/Wi-Fi Button**

**WPS:** Press the button for 1 second, and immediately press the WPS button on your client to start the WPS

process. Wi-Fi: Press and hold the button for more than 2 seconds, then release the button to turn on or off the wireless function of your router.

- **Reset Button**

Press and hold the button for about 6 seconds until the Power LED blinks to reset the router to its factory default settings.

To communicate with TP-Link users or engineers, visit <https://community.tp-link.com> to join TP-Link Community.

For technical support, replacement services, user guides, and other information, please visit <https://www.tp-link.com/support>.

If you have any suggestions or needs for our product guides, you are welcome to email [techwriter@tp-link.com.cn](mailto:techwriter@tp-link.com.cn).

- Keep the device away from water, fire, humidity or hot environments.
- Do not attempt to disassemble, repair, or modify the device. If you need service, please contact us.
- Do not use any other chargers than those recommended.
- Do not use damaged charger or USB cable to charge the device.
- Do not use the device where wireless devices are not allowed.
- Adapter shall be installed near the equipment and shall be easily accessible.

## **Need Help?**

### **Q1. What should I do if I can't access the web management page?**

- Reboot your router and try again.
- If the computer is set to a static IP, change its settings to obtain an IP address automatically.
- Verify that <http://tplinkwifi.net> is correctly entered in the web browser. Alternatively, enter <http://192.168.0.1> or <http://192.168.1.1> in the web browser.
- Use another web browser and try again.
- Disable and enable the network adapter in use.

### **Q2. What should I do if I can't access the internet?**

- Power off your modem for about 5 minutes, then power it on and check the internet. If your modem has more than one Ethernet port, keep other ports unconnected.
- Check if the internet is working normally by connecting a computer directly to the modem via an Ethernet cable. If it is not, contact your internet service provider.
- Log in to the web management page, and go to the Network Map page to check whether the internet IP address is valid or not. If it's valid, go to Advanced > Network > Internet, click Advanced Settings, select Use the Following DNS Addresses, set the primary DNS to 8.8.8.8, and set the secondary DNS to 8.8.4.4. If it is not, check the hardware connection or contact your internet service provider.
- For cable modem users, log in to the web management page of the router and go to Advanced > Network > Internet > MAC Clone. Select Clone Current Device MAC and click SAVE. Then reboot both the modem and the

router.

### Q3. What should I do if I forget my wireless password?

- If you have not changed the default wireless password, it can be found on the label at the bottom of the router.
- Connect a computer directly to the router using an Ethernet cable. Log in to the router's web management page at <http://tplinkwifi.net>, and go to the Wireless page to retrieve or reset your wireless password.

### Q4. What should I do if I forget my web management page password?

- If you are using a TP-Link ID to log in, click Forgot password on the login page and then follow the instructions to reset it.
- Alternatively, press and hold the Reset button on the back for about 6 seconds until the Power LED blinks. Then visit <http://tplinkwifi.net> to create a new login password.

### Q5. How should I position my router for optimal Wi-Fi performance?

- Don't place your router in a corner or in a closet.
- Avoid obstacles and high-powered appliances.
- Keep your router in a central location at a certain height.
- Keep the antennas vertical when the router is placed on a desktop. Keep the antennas upright when the router is hanging on a wall.

#### Set up with videos:


Scan QR code or visit

<https://www.tp-link.com/support/setup-video/#wi-fi-routers>



©2021 TP-Link 7106509272 REV2.0.0

### Documents / Resources

 <p>Can't connect to Wi-Fi 6 products wirelessly?</p> <p>Some older versions of driver or software for wireless devices may be incompatible with Wi-Fi 6 products.</p> <p>If you are experiencing problems connecting to your Wi-Fi 6 products, please update the driver or software for your wireless devices.</p> <p>How to update driver?</p> <ol style="list-style-type: none"><li>1. Check the model for your wireless adapter.</li><li>2. Go to the manufacturer's website for latest driver version.</li><li>3. Update the driver. You can contact them for further assistance in updating.</li></ol> <p><small>For more details, please refer to the user manual or visit <a href="http://www.tp-link.com">www.tp-link.com</a> for more information.</small></p>	<p><a href="#">tp-link AX3000 WiFi 6 One Mesh Router</a> [pdf] Instruction Manual</p> <p>AX3000 WiFi 6 One Mesh Router, AX3000, WiFi 6 One Mesh Router, One Mesh Router, Mesh Router, Router</p>
---	--

### References

- [Cannot detect or find the wireless signal of Wi-Fi6/Wi-Fi6E/Wi-Fi7 products\(Router/Range Extender/Deco\) | TP-Link](#)

- [User Manual](#)

[Manuals+](#), [Privacy Policy](#)

This website is an independent publication and is neither affiliated with nor endorsed by any of the trademark owners. The "Bluetooth®" word mark and logos are registered trademarks owned by Bluetooth SIG, Inc. The "Wi-Fi®" word mark and logos are registered trademarks owned by the Wi-Fi Alliance. Any use of these marks on this website does not imply any affiliation with or endorsement.