

tp-link AP9670 Wireless Access Point Installation Guide

Contents

- [1 AP9670 Wireless Access Point](#)
- [2 Product Information](#)
 - [2.1 Quick Installation Guide – Wireless Access Point](#)
 - [2.2 1. Hardware Overview](#)
 - [2.3 2. Hardware Installation](#)
 - [2.3.1 Option 1: Ceiling Mounting](#)
 - [2.3.2 Option 2: Wall Mounting](#)
 - [2.4 3. LED Indicators](#)
 - [2.5 4. Power Supply](#)
 - [2.6 Documents / Resources](#)

AP9670 Wireless Access Point

Product Information

Quick Installation Guide – Wireless Access Point

Note: AP9670 is used as an example throughout the Guide. Images may differ from your actual product.

1. Hardware Overview

Front Panel:

- The AP has LED indicators that provide status information.

Rear Panel:

- The AP has an Ethernet port for data transmission and Power over Ethernet (PoE) through an Ethernet cable.
- There is a power port to connect the power adapter for powering the AP.
- There is a reset button to restore the device to factory default settings.

2. Hardware Installation

Option 1: Ceiling Mounting

1. Remove the ceiling tile.
2. If your Ethernet cable feeds through the wall, position the mounting bracket below the cable hole. Mark positions for the screw holes and then drill 6 mm diameter holes at the marked positions.
3. Insert the plastic wall anchors into the 6 mm diameter holes.
4. Place the mounting bracket in the center of the ceiling tile.
Mark positions for the screw holes and a position for the Ethernet cable hole. Drill 4 mm diameter holes for the screws and a 25 mm diameter hole for the Ethernet cable at the marked positions.
5. Secure the mounting bracket to the ceiling tile using pan-head screws, washers, and wing nuts.
6. Feed the Ethernet cable through the hole and set the ceiling tile back into place.
7. Connect the Ethernet cable to the Ethernet port on the AP.
8. Attach the AP to the mounting bracket and rotate it until it locks into place.

Option 2: Wall Mounting

1. If your Ethernet cable feeds through the wall, position the mounting bracket below the cable hole. Mark positions for the screw holes and then drill 6 mm diameter holes at the marked positions.
2. Insert the plastic wall anchors into the 6 mm diameter holes.
3. Secure the mounting bracket to the wall by driving the self-tapping screws into the anchors. Make sure that the shoulders of the mounting bracket are on the outside.
4. Connect the Ethernet cable to the Ethernet port on the AP.
5. Attach the AP to the mounting bracket and rotate it until it locks into place.

3. LED Indicators

The LED indicator on the AP provides different status indications:

- **On:** Working normally/Initializing
- **Off:** Working abnormally/Power off/LED is turned off
- **Flash twice:** Initialization is completed
- **Flash once per second:** AP is upgrading

- **Flash quickly:** AP is resetting or the controller is locating the AP*
- **Flash slowly:** AP is in the isolated state

* When the Locate feature is activated in the controller, the LED flashes quickly to locate and identify the device. The LED will flash for 10 minutes, or you can disable the feature manually to stop it flashing.

4. Power Supply

The AP can be powered via a power adapter or a PSE device (such as a PoE switch) that complies with Power Source Class 2 (PS2) or Limited Power Source (LPS) of IEC 62368-1.

[View Fullscreen](#)



Wireless Access Point

Note: AP9670 is used as an example throughout the Guide. Images may differ from your actual product.

©2023 TP-Link 7106510352 REV1.1.0

1 Hardware Overview

Front Panel

2 Hardware Installation

The AP can be ceiling-mounted or wall-mounted. Choose a mounting method according to your needs. Follow the steps below for the appropriate installation.

Option 2: Wall Mounting

Option 1: Ceiling Mounting

Option 2: Wall Mounting

Option 1: Ceiling Mounting

Note: Make sure that the ceiling tile is bigger than the AP.

Washers

Pan-head Screws

Wing Nuts

1

Remove the ceiling tile.

Plastic Wall Anchors

Self-tapping Screws

1

If your Ethernet cable feeds through the wall, you can position the mounting bracket below the cable hole. Mark positions for the screw holes and then drill 6 mm diameter holes at the marked positions.

2

Insert the plastic wall anchors into the 6 mm diameter holes.

LED Indicator On: Working normally/Initializing. Off: Working abnormally/Power off/LED is turned off. Flash:

Flash twice: Initialization is completed. Flash once per second: The AP is upgrading. Flash quickly: The AP is resetting or the controller is locating the AP*. Flash slowly: The AP is in the isolated state.

* When the Locate feature is activated in the controller, the LED flashes quickly to locate and identify the device. The LED will flash for 10 minutes, or you can disable the feature manually to stop it flashing.

Rear Panel

Drill Hole for Ethernet cable

2

Place the mounting bracket in the center of the ceiling tile. Mark positions for the screw holes and a position for the Ethernet cable hole. Drill 4 mm diameter holes for the screws and a 25 mm diameter hole for the Ethernet cable at the marked positions.

3

Secure the mounting bracket to the ceiling tile using pan-head screws, washers and wing nuts, as shown on the left.

RESET

With the device powered on, press and hold the button for about 5 seconds until the LED flashes quickly. Then release the button. The device will restore to factory default settings.

Ethernet Port (PoE)

The port is used to connect to a router or a switch to transmit data, or to a PSE (Power Sourcing Equipment), such as a PoE switch, for both data transmission and Power over Ethernet (PoE) through Ethernet cable.

Power Port

Plug one end of the power adapter to this port and the other end to a standard electrical wall outlet to power the AP. Note: Power adapter is not provided. For power supply specifications, please refer to the label at the bottom of the product.

4

Feed the Ethernet cable through the hole and set the ceiling tile back into place.

5

Connect the Ethernet cable to the Ethernet port. Attach the AP to the mounting bracket, then rotate the AP until it locks into place, as shown on the left.

3

Secure the mounting bracket to the wall by driving the self-tapping screws into the anchors. Make sure that the shoulders of the mounting bracket are on the outside.

4

Connect the Ethernet cable to the Ethernet port on the AP.

5

Attach the AP to the mounting bracket, then rotate the AP until it locks into place, as shown on the left.

3 Power Supply

The AP can be powered via a power adapter or a PSE device (such as a PoE switch) which complies with Power Source Class 2 (PS2) or Limited Power Source (LPS) of IEC 62368-1.

Option 1: Via PoE Switch (Compliant with 802.3at)

PoE Switch (Compliant with 802.3at)

Connect an Ethernet cable from the PoE switch to the Ethernet port of the AP.

Option 2: Via Power Adapter

Power Adapter

Method 2: Controller Mode

Choose a type of controller: Type 1: Omada Pro Software Controller If you want to use the software controller, get a PC with Windows or Linux OS, contact the sales staff to get the installation package of Omada Pro Software Controller, then install and launch it. To manage your devices, the software controller needs to keep running on your computer. Licenses need to be purchased additionally.

Type 2: Omada Pro Cloud-Based Controller

Omada Pro Cloud-Based Controller is a good alternative without the need to install the software controller on a PC. Licenses need to be purchased additionally.

Router Switch

Omada Cloud

Router Switch

Switch

Controller

Plug one end of the power adapter into the power port of the AP and the other end to a standard electrical wall outlet.

Omada Pro Software Controller

AP

AP

AP

running on the Host PC

Note: Power adapter is not provided. For power supply specifications, please refer to the label at the bottom of the product.

AP

AP

AP

AP

4 Software Configuration

Choose from the following methods to set up your APs: Method 1: Standalone Mode To configure and manage APs separately (Convenient for a small network with only a few devices) Method 2: Controller Mode To configure and manage APs in batches on a central platform, namely the controller.

Method 1: Standalone Mode

Internet AP
Router

AP

Clients

Note: Before you start, be sure to power up and connect your devices according to the topology figure. A DHCP server (typically a router with DHCP function enabled) is required to assign IP addresses to the APs and clients in your local network.

Via Omada App 1. Download and install the TP-Link Omada app from App Store or Google Play.

or

Scan for Omada

Omada

2. Connect your mobile device to the AP by using the default SSIDs printed on the label at the bottom of the product.
3. Open the Omada app, go to the Standalone Devices > APs page, and wait for the AP to appear. Tap on the AP to configure it.

The Omada app is designed to help you quickly configure common settings. If you want to configure advanced settings, use the web page of your AP or use Controller Mode.

Via Web Browser

1. Connect your device to the AP by using the default SSIDs printed on the label at the bottom of the product.
2. Launch a web browser and enter <http://tplinkeap.net> in the address bar. Use admin for both Username and Password to log in.
3. Set up a new Username and Password for secure management purpose. Then you can configure the AP. To configure other APs, connect your device to each AP by using the corresponding default SSIDs and repeat the steps above. You can configure some basic functions in Standalone Mode. If you want to configure advanced functions, use Controller Mode.

Clients

Note: Before you start, be sure to power up and connect your devices according to the topology figure. A DHCP server (typically a router with DHCP function enabled) is required to assign IP addresses to the APs and clients in your local network. The controller must have network access to your devices (the router, switch, and APs) in order to find, adopt, and manage them.

Via Omada App

1. Download and install the TP-Link Omada app from App Store or Google Play.

or

Scan for Omada

Omada

2. Launch your Omada app and configure the controller at a local or remote site.

Local Management

- a. Connect your mobile device to the AP by using the default SSIDs printed on the label at the bottom of the product.
- b. Launch the Omada app and go to Local Access, tap the + button on the upper-right corner to add the controller. Then you can launch the controller to adopt and manage devices.

Remote Management

Note: Before you start, make sure that both your controller and mobile device can access the internet.

- a. Make sure that Cloud Access is enabled on your controller and your controller has been bound with your TP-Link ID.
- b. Launch the Omada app and log in with your TP-Link ID. Then go to Cloud Access. A list of controllers that have been bound with your TP-Link ID will appear. Then you can launch the controller to adopt and manage devices.

Via Web Browser

Local Management a. Launch the software controller on your PC. After the initiation process, the controller automatically opens its web page. If not, click Launch a Browser to Manage the Network.

b. On the controller's web page, follow the wizard to complete the quick setup. Then you can launch the controller to adopt and manage devices.

Remote Management Note: Before you start, make sure that both your controller and PC can access the internet.

a. Make sure that Cloud Access is enabled on your controller and your controller has been bound with your TP-Link ID.

b. Launch a web browser and enter <https://omada.tplinkcloud.com> in the address bar. Log in with your TP-Link ID. A list of controllers that have been bound with your TP-Link ID will appear. Then you can launch the controller to adopt and manage devices.

Clients

Note: Before you start, be sure to power up and connect your devices according to the topology figure. A DHCP server (typically a router with DHCP function enabled) is required to assign IP addresses to the APs and clients in your local network.

Web Configuration

1. Contact the sales staff to grant the Omada Pro Cloud-Based Controller permission. 2. Launch a web browser and enter <https://omada.tplinkcloud.com> in the address bar. Log in with your TP-Link ID. 3. Click + Add Controller and choose Cloud-Based Controller to add a Omada Pro controller. Then you can launch the controller to adopt and manage devices. * Management via Omada App After adding a controller, you can also use it via the Omada app. 1. Download and install the TP-Link Omada app from App Store or Google Play.

or

Scan for Omada

Omada

2. Launch the Omada app and log in with your TP-Link ID. Then go to Cloud Access. A list of controllers that have been bound with your TP-Link ID will appear. Then you can launch the controller to adopt and manage devices.

For the detailed configurations, refer to the User Guide of the controller and APs. The guides can be found on the download center of our official website: <https://www.tp-link.com/support/download/>.

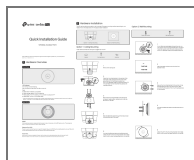
To ask questions, find answers, and communicate with TP-Link users or engineers, please visit <https://community.tp-link.com> to join TP-Link Community.

For technical support, the user guide and other information, please visit <https://www.tp-link.com/support>, or simply scan the QR code.

Safety Information

· Keep the device away from water, fire, humidity or hot environments. · Do not attempt to disassemble, repair, or modify the device. If you need service, please contact us. · Do not use the device where wireless devices are not allowed. · Do not use damaged charger or USB cable to charge the device. · Do not use any other chargers than those recommended. · Adapter shall be installed near the equipment and shall be easily accessible.

Documents / Resources



[tp-link AP9670 Wireless Access Point](#) [pdf] Installation Guide
AP9670 Wireless Access Point, AP9670, Wireless Access Point, Access Point