



## tp-link Agile Config Software User Guide

[Home](#) » [tp-link](#) » tp-link Agile Config Software User Guide 

**Tp-link Agile Config Software**



## Contents

- [1 About Agile Config](#)
- [2 Prepare Equipment and Install Agile Suite](#)
- [3 Generate Configuration Files](#)
- [4 Upgrade the Devices](#)
- [5 FAQ](#)
- [6 Documents / Resources](#)
  - [6.1 References](#)
- [7 Related Posts](#)

## About Agile Config

### Chapter 1.

Agile Config is software that enables customers to flexibly customize settings such as logo, WAN connection type, SSID, password, time zone, language, and so on. It simplifies the customization process by configuring devices in batches.

Agile Config software consists of four major configurations—General Config, Specific Config, Logo Config and Favicon Config. General Config configures upgrades the common settings of devices with the same HW&SW version to the format required by customers. Specific Config sets specific settings for each device according to its

MAC address. Logo Config and Favicon Config can change the ISP logo and Favicon as you want. Once the config process is completed, the current settings will be the new default setting. When you press the reset button of the device, it will be reset to the settings configured by Agile Config software, rather than the factory default setting. This feature allows the Service Provider to customize products quickly and permanently keep these settings in the device. You can learn how to use the Agile Config function from this file. If you have any problems, please feel free to contact us.

## Prepare Equipment and Install Agile Suite

### Chapter 2.

Before all the configuration work begins, you need to prepare the equipment below and install the “Agile Suite” software.

#### Prepare Equipment for Configuration

- Hardware required: one PC, one switch (optional) and TP-Link managed router(s) which supports Agile Config function.

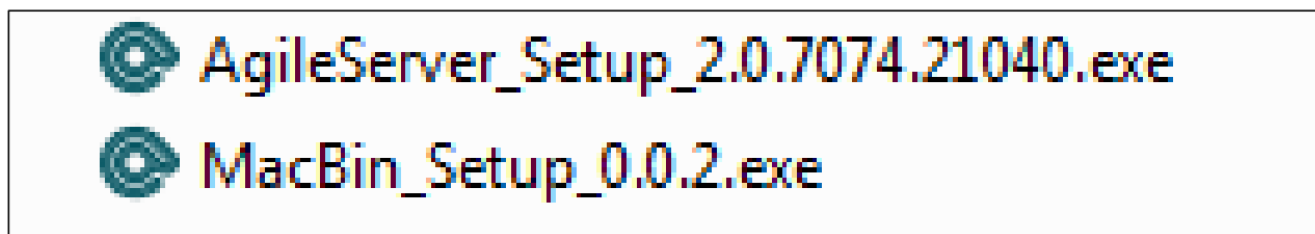


**Note:** If you want to configure a batch of devices, please prepare a switch.

- Software required: Excel 2007 or later; Agile Config 2.0 Suite.
- Supported operating systems: Windows 7/ Windows 10 (NET Framework 3.5 or later)

#### Install Agile Suite 2.0

1. Unzip the installation package downloaded from our website. Agile suite 2.0 contains the two installers below:



## Figure 2-1

2. Click AgileServer\_Setup\_2.0.7074.21040.exe and follow the instructions to install Agile Server 2.0.
3. Click MacBin\_Setup\_0.0.2.exe and follow the instructions to install the MAC. bin tool.



**Note:** The password of these two installers is “Tpplinkonly1”.

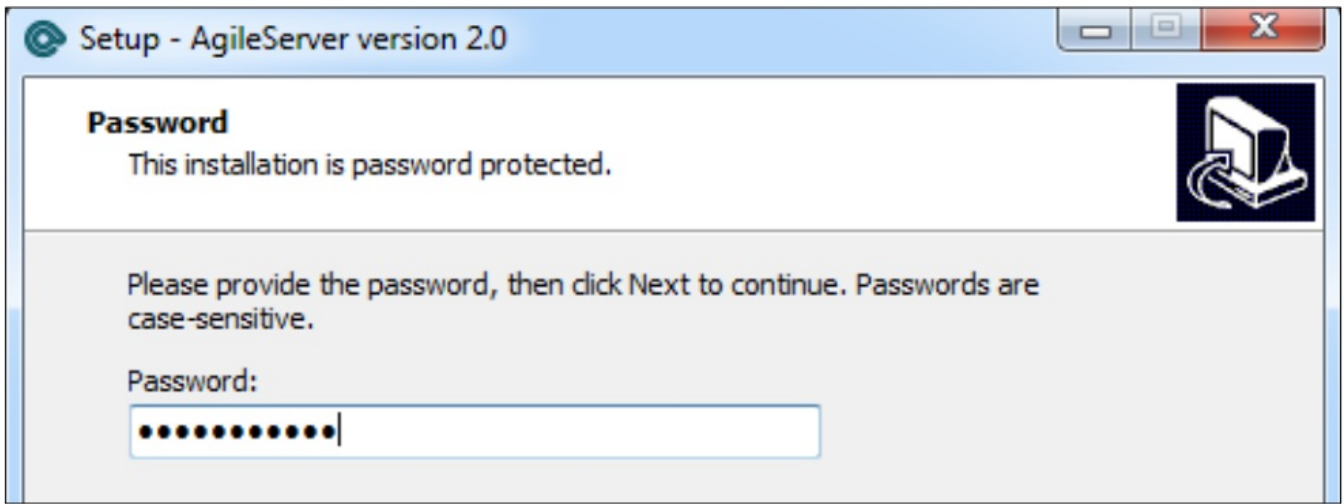


Figure 2-2

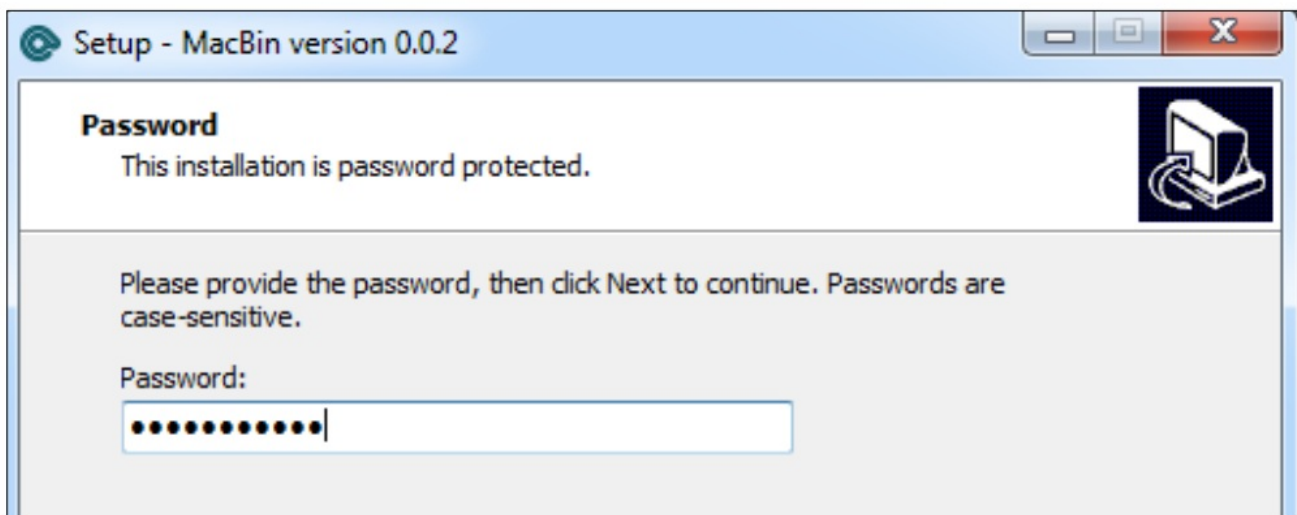


Figure 2-3

## Generate Configuration Files

### Chapter 3.

#### General Config

General Config configures the basic network settings of multiple devices installed with the same software version. You need a standard prototype to generate the General Config file.

1. Plug the PC to the LAN port of the standard prototype via an Ethernet cable.
2. Check the login information from the label on the bottom of the standard prototype and log into its web management page.



**Note:** The IP address of your PC should be obtained automatically.

3. Configure settings as customers required and save the settings. All the settings available can be modified and saved for your configuration.

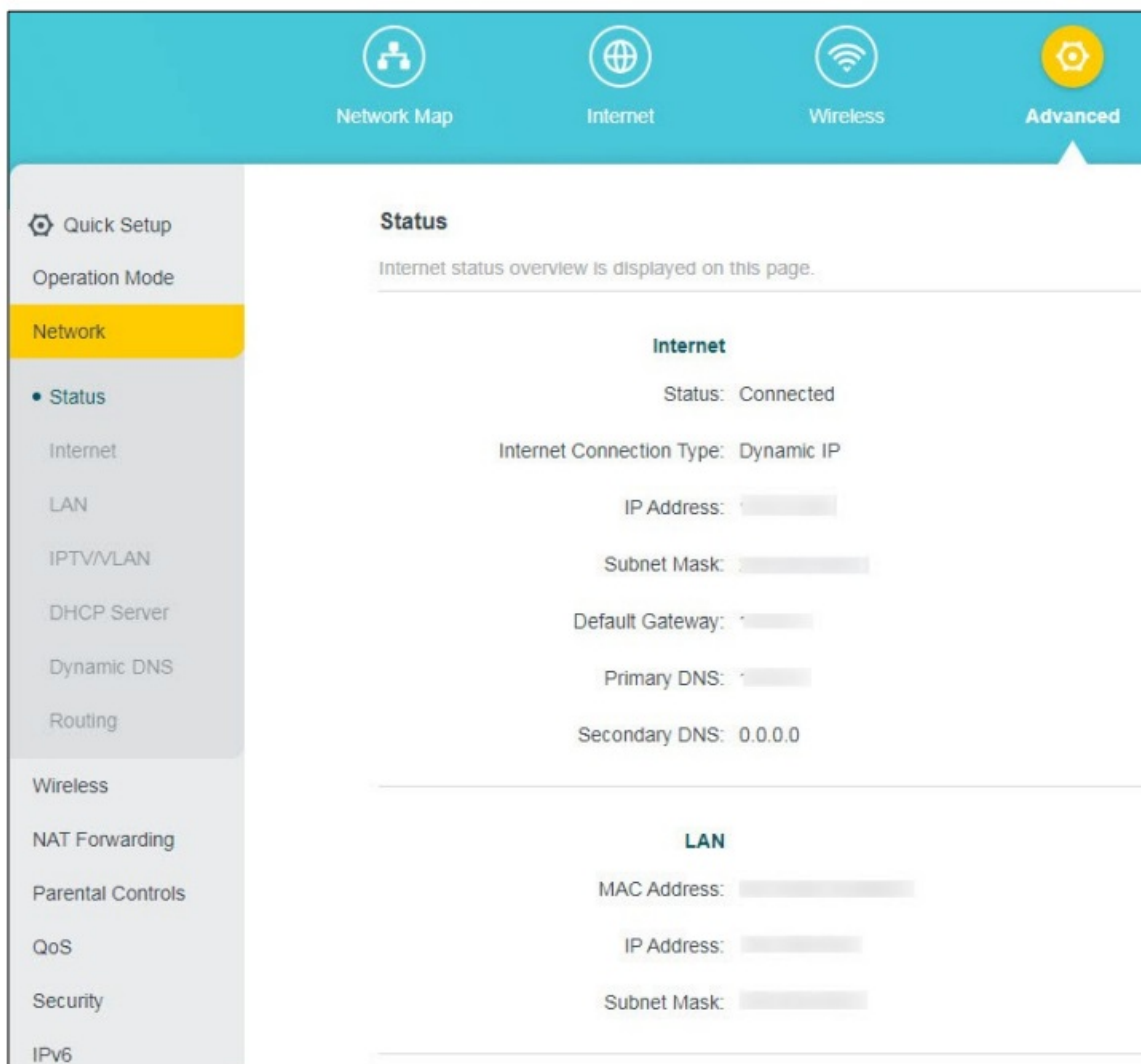


Figure 3-1



**Note:**

- a) If you want to configure the device's SSID to be formatted with the MAC address, please refer to FAQ->Q3 for detailed information.
  - b) If you want to customize the wireless SSID of each device, please refer to FAQ->Q4 for detailed information.
4. Go to System -> Backup & Restore and click Backup. The configuration file will be generated and downloaded right away by the browser.

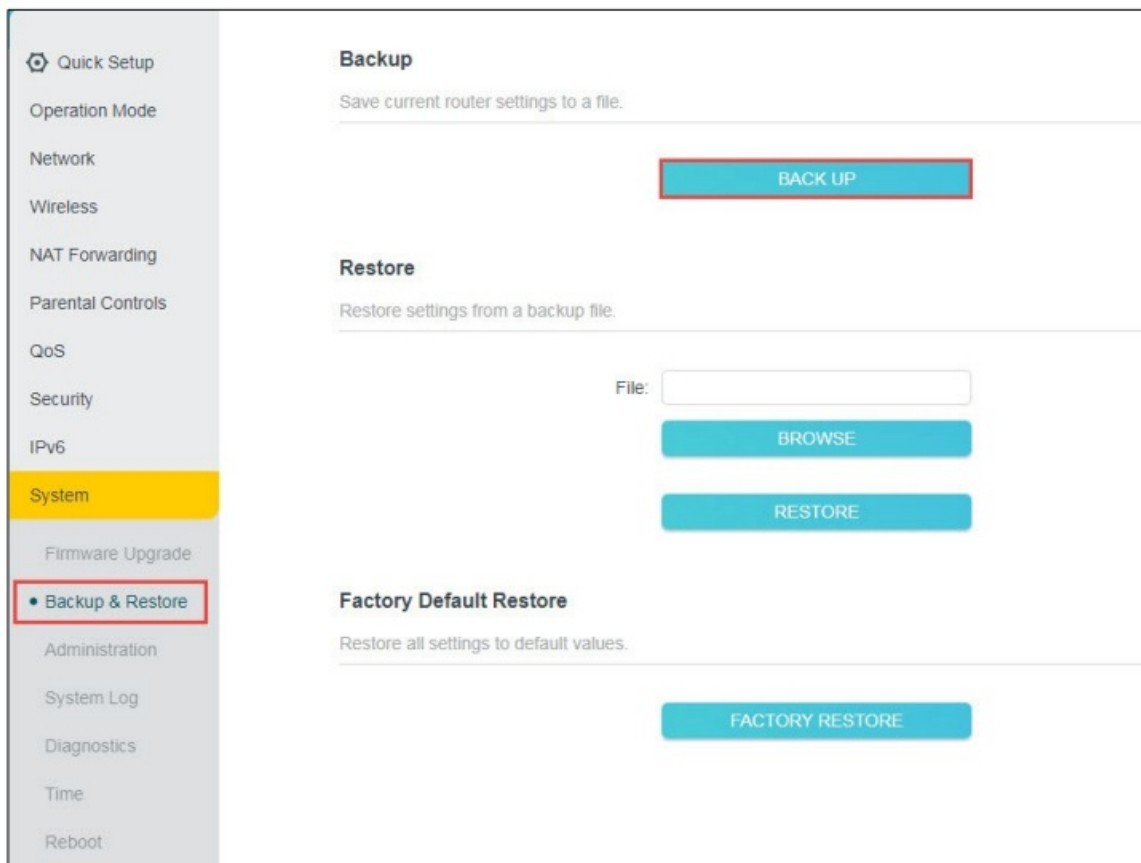


Figure 3-2

5. Find the file in the download path of your web browser.

**Note:**

- a) The name of the General Config file is “xxxxx. bin” based on the model name.
- b) Please don't modify the file's name. Otherwise, the Agile Server is unable to recognize it.
- c) If the backup file is “conf. bin”, that means your device does not support Agile config function .

**Specific Config**

**Specific Config** only supports changing several parameters, including Network Name (SSID), wireless password, the username and password of the Web management interface, username and password of PPPoE connection, IP address, subnet mask and gateway address of static IP connection.

**For example,** A customer bought 8 pcs of TP-Link products and wanted to set PPPoE as the connection type. Each device should have a different PPPoE username and password.

How to general the Specific Config file for each device?

1. Run MacBin.exe as administrator.

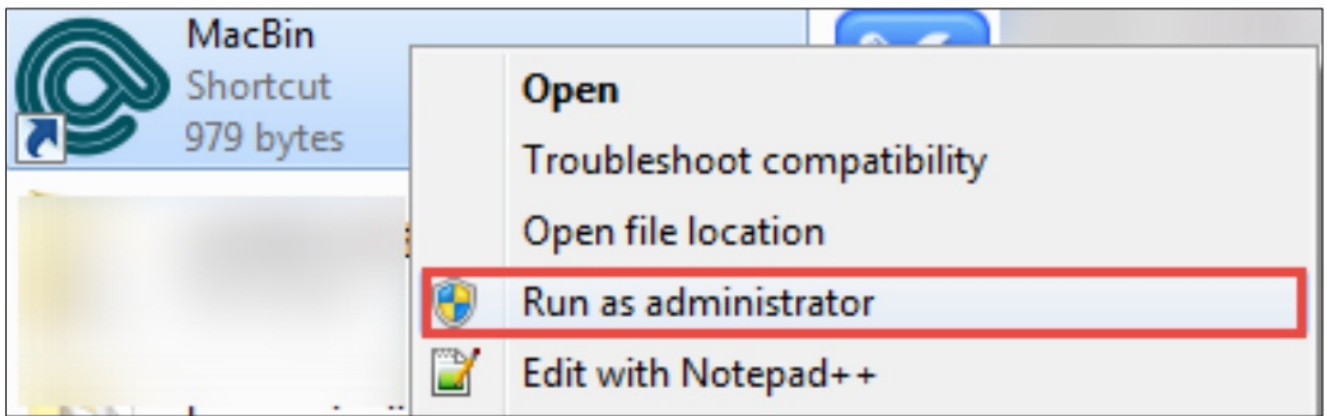


Figure 3-3

2. Assume that the username and password of PPPoE are composed of 8-bit random characters. Select them and enter a digit such as 8, input the total number of configuration files, such as 8.



**Note:** If you don't need parameters generated randomly, please skip this step.

3. Click Create MACBIN.xls to generate MACBIN.xls.

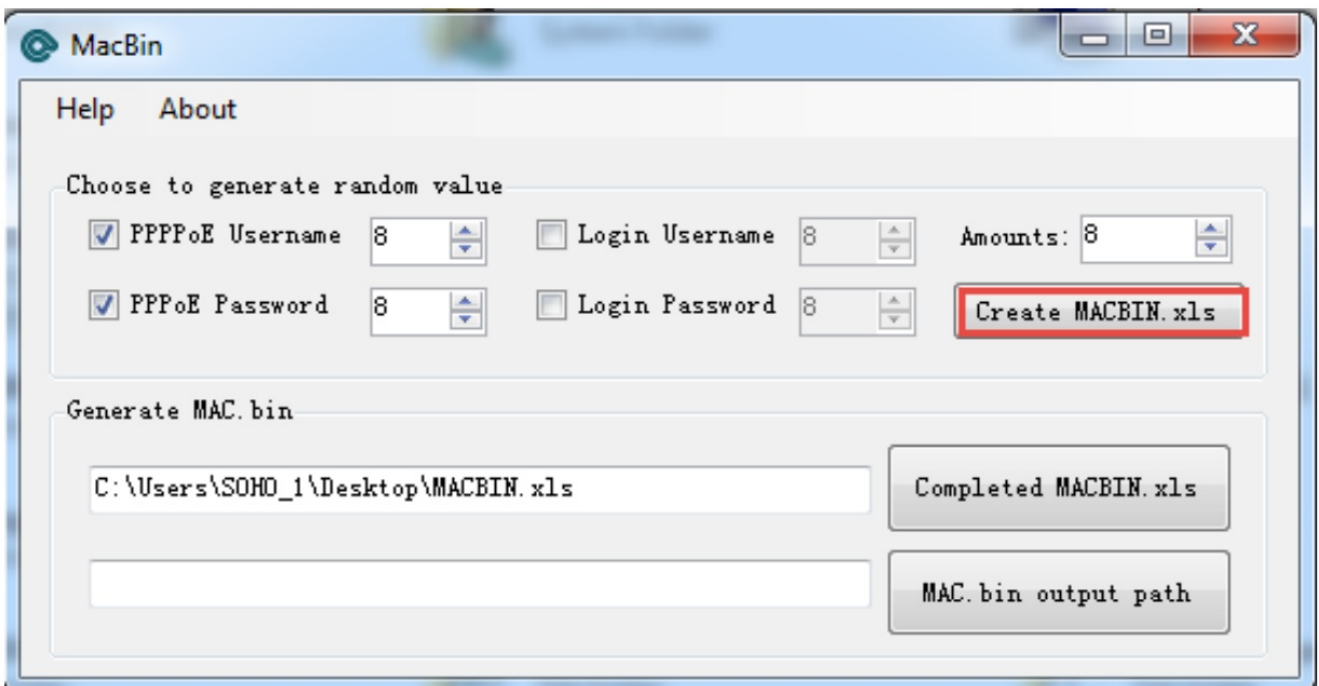


Figure 3-4

4. Find MACBIN.xls in the default path. Open it and you can see the columns of PPPoE Username and Password filled with random values.
5. Enter all the MAC addresses of these devices and save MACBIN.xls.

MAC Address	Username	Password	WirelessKey	PPPoE Username	PPPoE Password
7C8BCA5718DC				IC1IivbSXU	bJATK7
7C8BCA5719DC				JaTHXcytXe	SgixcW
7C8BCA5720DC				meXJRgdp9J	H5oOLF
7C8BCA5721DC				hppPUXGL2k	isVD1C
7C8BCA5722DC				r2D7YUE1mz	42rT0s
7C8BCA5723DC				3fGgjd0H2a	VT0YsM
				82AkSvSYpL	3rQ3b2
				tUSf3ntss2	9ROpCE

Figure 3-5



**Note:**

- a) The distributor can provide the list of MAC addresses of devices.
  - b) If your devices do not need a username to log in, Username set in MACBIN.xls will not take effect after the upgrade (Note that the username column in Excel cannot be left blank).
6. Click the “Completed **MACBIN.xls**” button and select the excel table you just saved.

Figure 3-6

7. Click “MAC. bin output path” and select the folder where MAC. bin will be saved. The “MAC. bin” file will be automatically produced in the folder you chose.



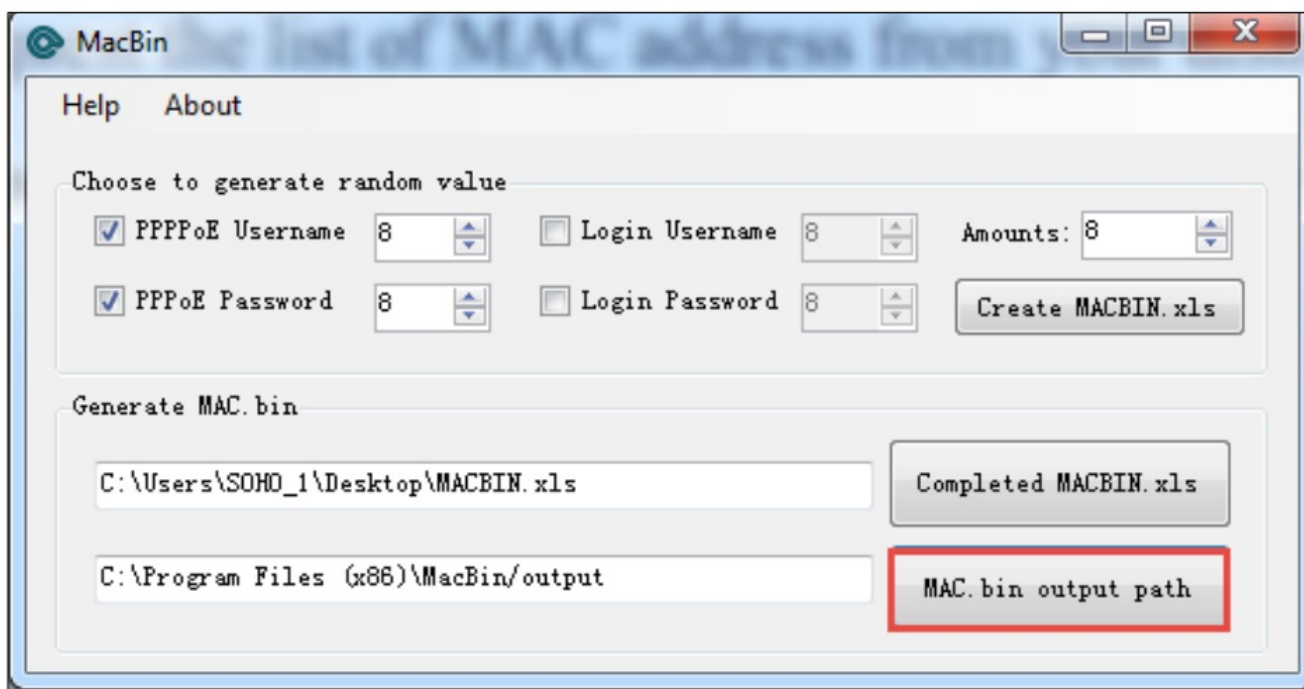


Figure 3-7



**Note:**

- a) The exported configuration file is one “xxxxx. bin” file based on MAC address, such as “7C8BCA5718DC.bin”. One file for one device.
- b) For PPPoE and Static IP, you should set the connection type to PPPoE or Static IP in General Config first, then configure PPPoE account and static IP parameters in Specific Config.

**Logo Config, Favicon Config and Logo URL**

You can change your ISP logo and Favicon by Logo Config and Favicon Config in the Agile Config tool.

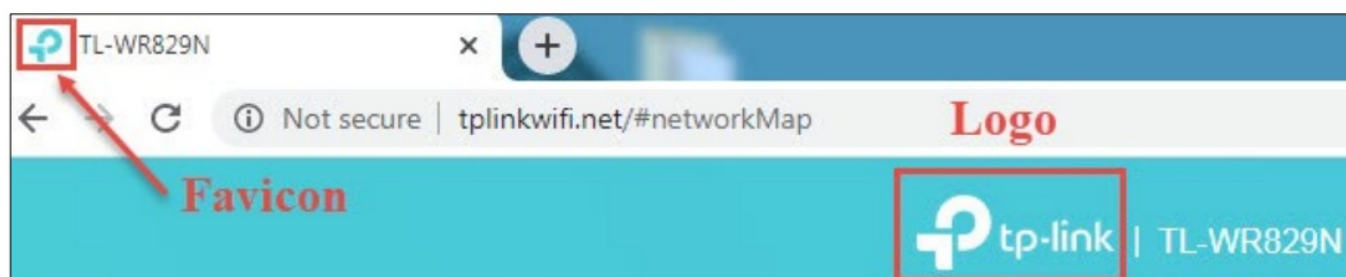


Figure 3-8

Prepare the Favicon and Logo file you want to change. The Logo file must be named as logo.png and the Favicon file must be named as favicon.ico.



**Note:**

- a) The Favicon and Logo files can not exceed 6KB.
- b) The size of the Logo image cannot exceed 130\*50, a warning will appear if the width exceeds 135 or the length exceeds 55 (Although the image will still be replaced).

By default, you can click the logo on the left corner to go to the TP-Link official website.  
To customize the url of the logo, create a file named “config”, and enter “logourl=<http://www.xxxxx.com>” for example the url of your company, then you can click the logo to go to the specific website.



## Upgrade the Devices

### Chapter 4.

#### Connect the Hardware

1. Connect the PC to the switch.
2. Power off the devices you are going to upgrade.
3. Connect any LAN port (LAN1, LAN2 or LAN3) of the devices to the switch via Ethernet cable.

**Tip:** The ports on the switch determines the number of devices upgraded in batches.

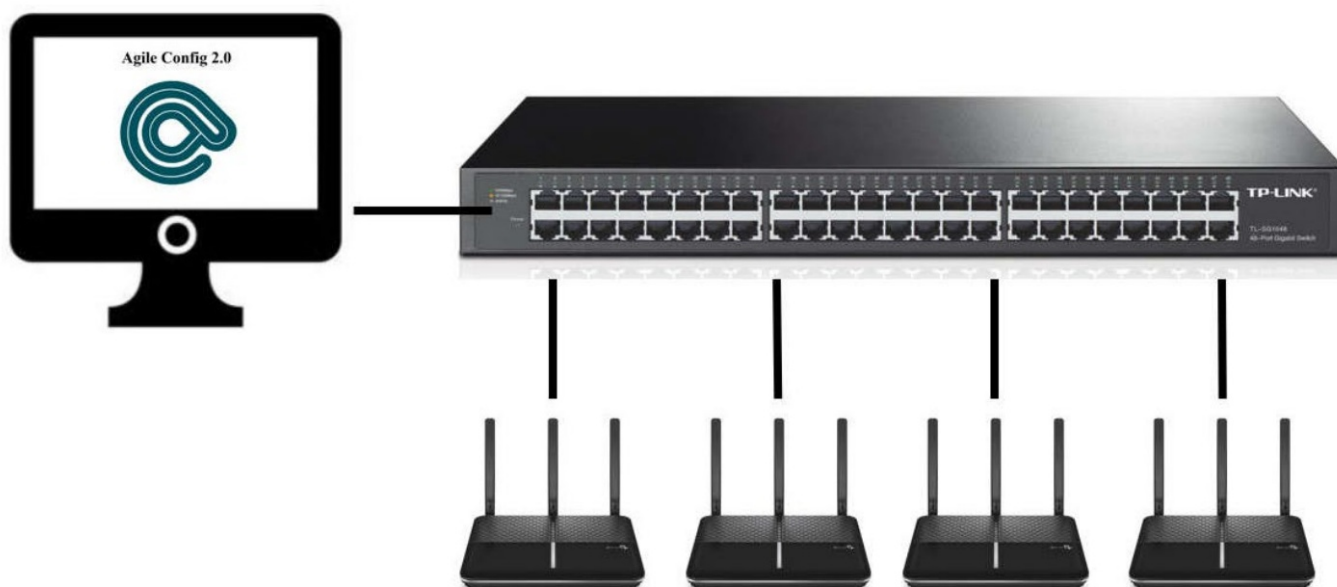


Figure 4-1

#### Upgrade Devices

1. Create a new folder on the computer, such as C:\TP-Link Agile Config2.0.

2. Import the configuration files into the folder. The folder may include: General Config file, MAC. bin file, Favicon.ico, and logo.png.
3. Set the IP address and subnet mask of your PC as "192.168.66.10, 255.255.255.0", and click Save.

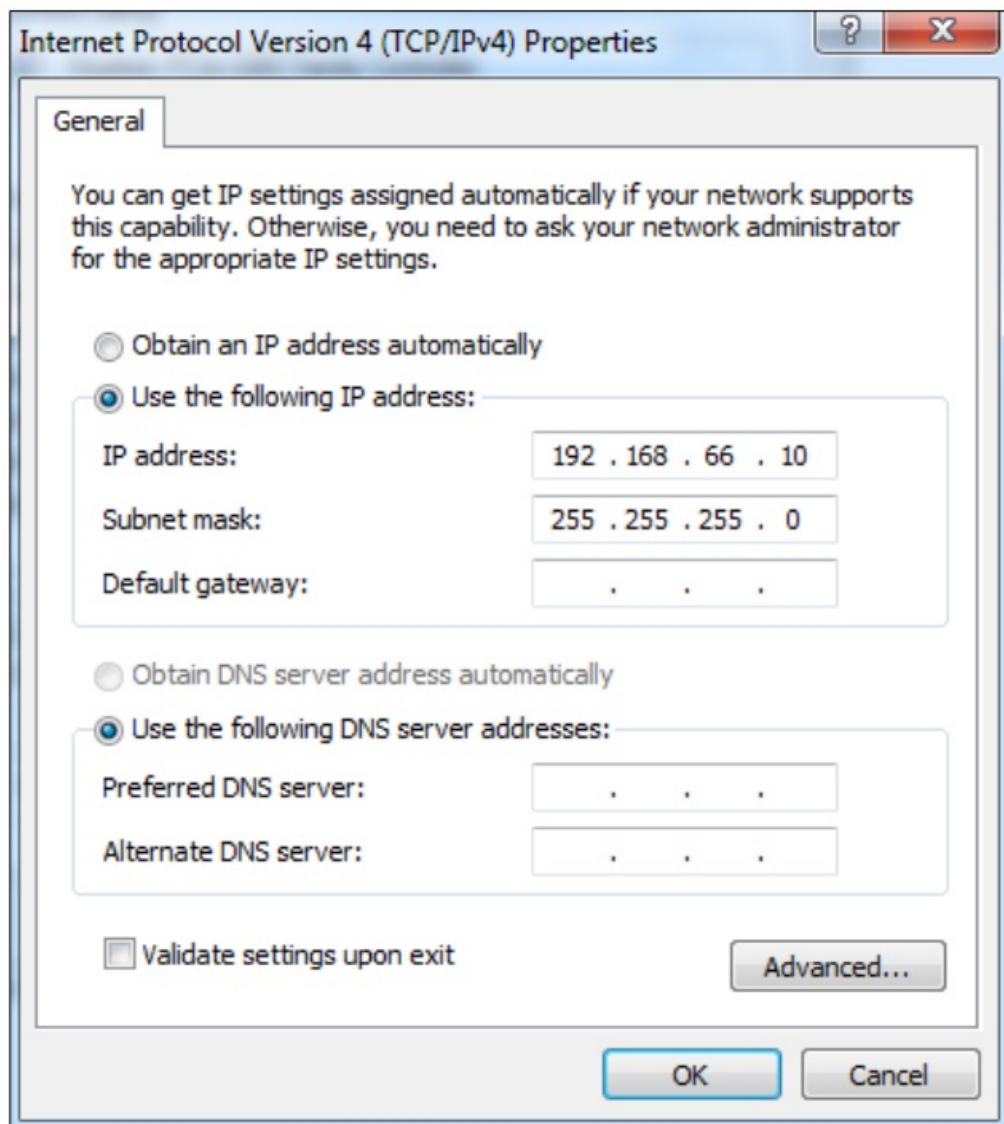


Figure 4-2

4. Run Agile Server 2.0 exe., click the button and select the folder where the configuration files are located.

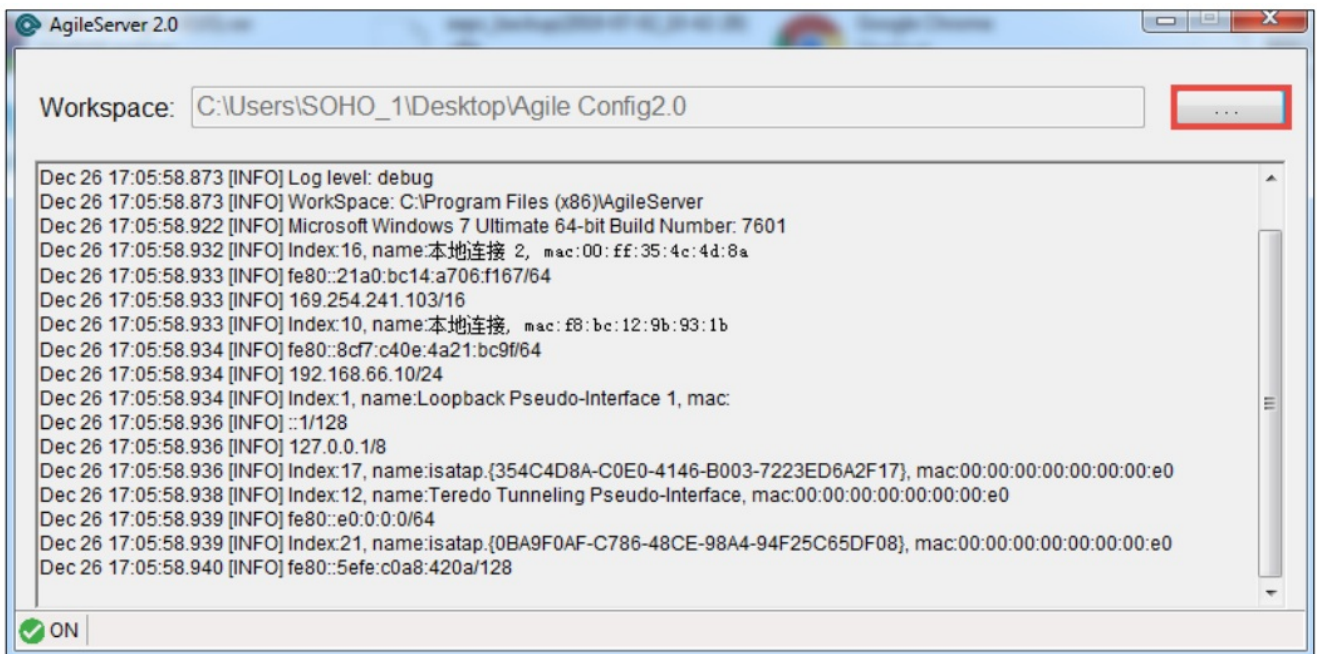


Figure 4-3

5. Power on the devices and they will be upgraded automatically.
6. After the upgrade is finished, power off your device and power it on. Then the configuration will take effect.



**Note:**

1. LED Description is shown as above
  - a) All LEDs are lit, indicating the Agile Config has started.
  - b) All LEDs flash, indicating the Agile Config is successful.
2. If the LEDs do not flash, it means the upgrade has failed. Please check your configuration files and import them again.

## FAQ

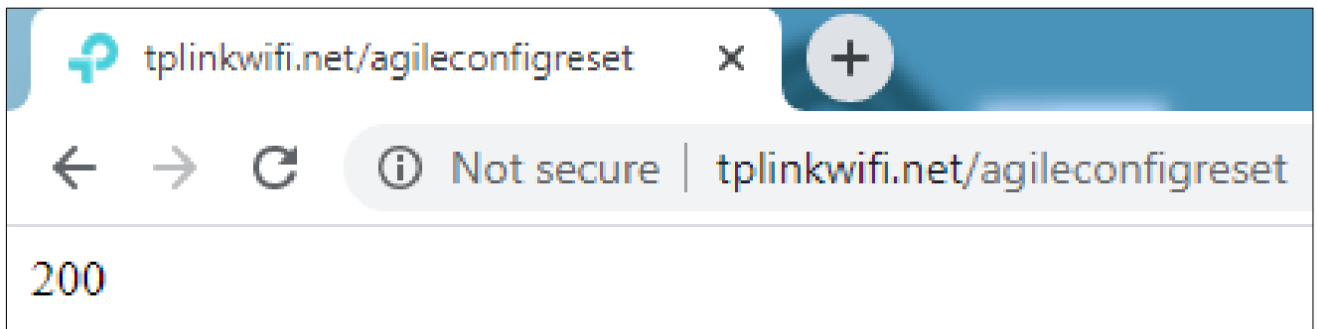
### Q1. When Agile Config function will be disabled?

- a) The configuration of Agile Config is completed.
- b) Create an admin password or log into the interface of the device.

### Q2. If Agile Config function is disabled in the above situations, how could I enable this function?

- If you haven't configured your device via Agile Config yet:  
Press the Reset for over 5 seconds, Once the reset process is completed, you can configure the device via Agile Config.
- If you have configured your device via Agile Config:
  - a) Power the device on and connect its LAN port to one PC.
  - b) Launch a web browser and enter <http://tplinkwifi.net/agileconfigreset> in the address bar. If the interface shows "200", please follow the next step

**Note:** If the interface shows "403", check your network status and try again. If it still doesn't work, please contact our technical support.



c) Within 10 minutes, press Reset for over 5 seconds, then the device will restore to the default TP-Link factory settings. You can configure the device again via Agile Config.

### Q3. How do you configure the device's SSID to be formatted with the MAC address?

If the SSID of each device needs to be unique based on their MAC addresses, please set the SSID as "WISP\_XXXX\_2G" in General Config. XXXX will be replaced with the last N bits of the MAC address (N is the number of Xs you enter). For example, when the MAC address is 8D6C7298D0A and the SSID is set as "WISP\_XXXX\_2G", the new SSID will be "WISP\_8D0A\_2G". If the SSID is "WISP\_XXXXXX", it will be "WISP\_298D0A".

### Q4. How to configure a different wireless password for each device?

Please set the wireless password to be "?undefined?" in General Config, the password of each device will be the same as its PIN after configured by Agile Config.



## Documents / Resources

	<a href="#">tp-link Agile Config Software</a> [pdf] User Guide Agile Config Software, Agile Config, Software
---	---

## References

- [User Manual](#)

[Manuals+](#), [Privacy Policy](#)

This website is an independent publication and is neither affiliated with nor endorsed by any of the trademark owners. The "Bluetooth®" word mark and logos are registered trademarks owned by Bluetooth SIG, Inc. The "Wi-Fi®" word mark and logos are registered trademarks owned by the Wi-Fi Alliance. Any use of these marks on this website does not imply any affiliation with or endorsement.