



TOZO NC2 Active Noise Cancellation User Guide

[Home](#) » [TOZO](#) » TOZO NC2 Active Noise Cancellation User Guide 

TOZO NC2 Active Noise Cancellation User Guide



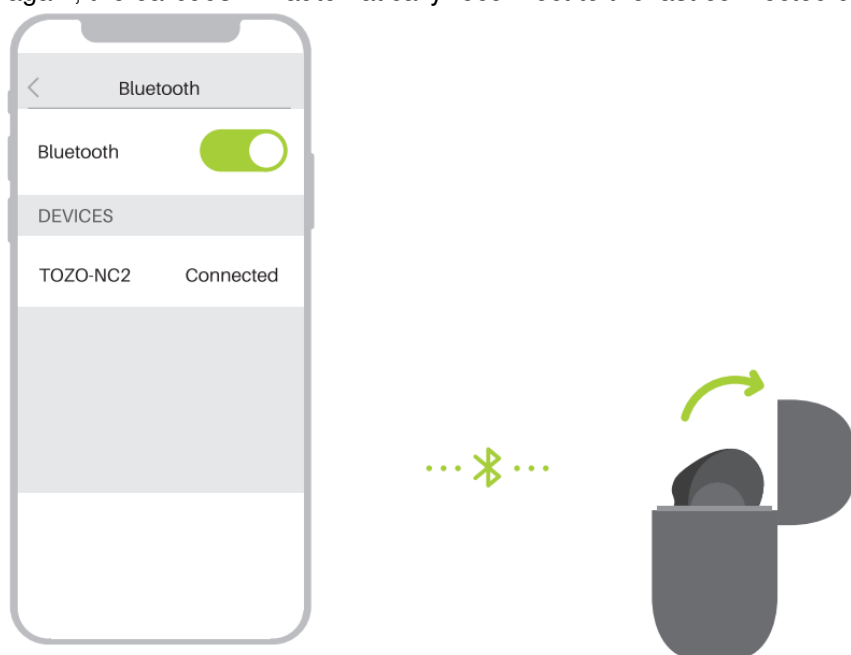
Contents

- [1 Bluetooth pairing and wearing](#)
- [2 Smart touch control](#)
- [3 Power on/off](#)
- [4 Reset](#)
- [5 Charging](#)
- [6 Documents / Resources](#)
- [7 Related Posts](#)

Bluetooth pairing and wearing

Bluetooth pairing

Open the charging box, the left and right earbuds are automatically turned on and connected to each other. Search for the Bluetooth pairing name **[TOZO-NC2]** in the device and select it to complete the pairing. When use again, the earbuds will automatically reconnect to the last connected device.



wearing

1. Choose the eartips that fit your ears best.
2. Adjust the earbuds to fit snugly.



Smart touch control

Previous song

X2 



Volume down

Hold 



Active Noise Cancellation mode/Transparent mode

X1 



Answer

X1 



Reject

Hold 



Play/Pause

X1 



Next Song

X2 



Volume up

Hold 



Voice assistant

X3 



Hang up

Hold 



Power on/off

Power on



Power Off

**Power on:**

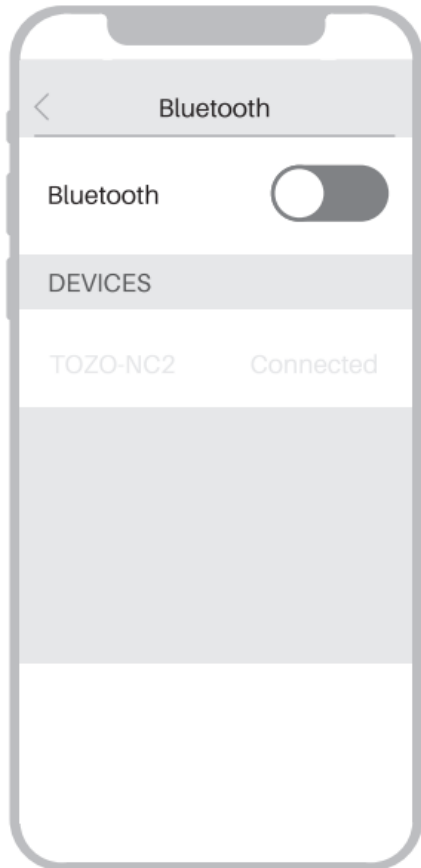
Open the cover of the charging case, the earbuds will power on automatically. **Power off:**

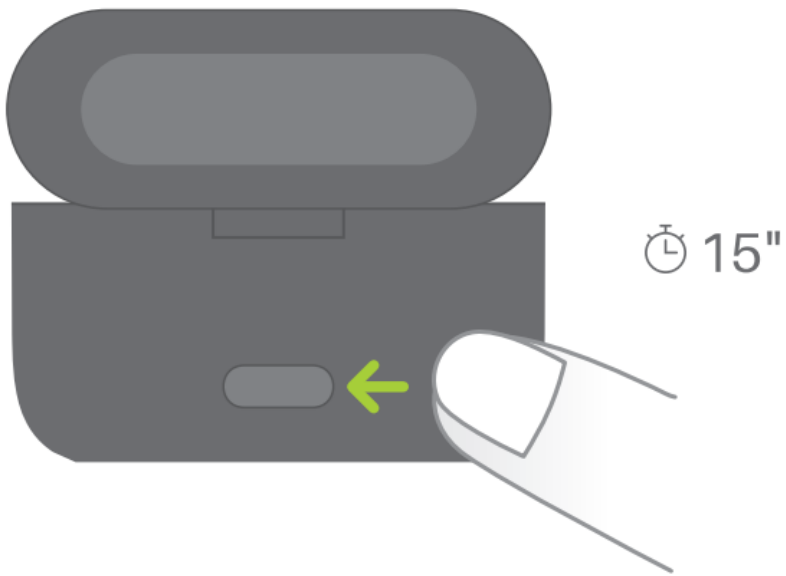
Put the earbuds into the charging case, close the cover, and automatically power off.

Reset

If you accidentally get only one earbud work, or fails to pair each other, please reset it: Put earbuds into the charging case, open the lid, press and hold the case button for 15 seconds.

NOTE: In case there is [Connection Unsuccessful] in your devices, please delete all historical records of [TOZO-NC2] and try the pairing process again.

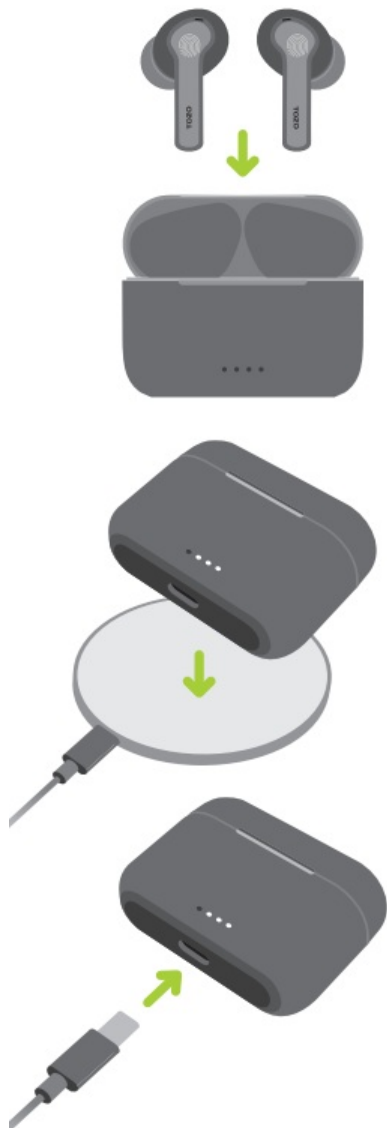




Charging

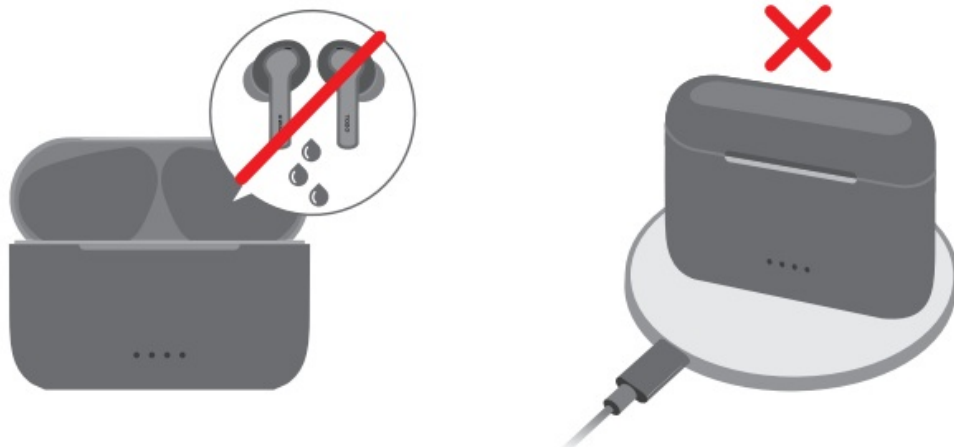
Place case with light facing up on wireless charger. (Wireless charging pad not included)

Or charge the case via USB-C connector. (USB-C cable included)



Don't put wet earbuds into the charging case, fully dry off the earbuds before charging.

Don't place the case vertically.




Thank you for purchasing the **TOZO** authentic product. For more latest products, parts and accessories, please visit: www.tozostore.com
For any assistance please contact Email: info@tozostore.com

SYMBOLS



TOZO®

Documents / Resources

 <p>TOZO® NC2 Active Noise Cancellation User Guide</p>	<p>TOZO NC2 Active Noise Cancellation [pdf] User Guide NC2 Active Noise Cancellation, NC2, Active Noise Cancellation, Noise Cancellation</p>
---	--