

TOYBOX
2BGPC-COMET 3D
Printer



TOYBOX 2BGPC-COMET 3D Printer User Guide

[Home](#) » [TOYBOX](#) » TOYBOX 2BGPC-COMET 3D Printer User Guide 

Contents

- [1 TOYBOX 2BGPC-COMET 3D Printer](#)
- [2 Specifications](#)
- [3 Product Usage Instructions](#)
- [4 FAQ](#)
- [5 INSTALLATION INSTRUCTION](#)
- [6 FCC STATEMENT](#)
- [7 Documents / Resources](#)
 - [7.1 References](#)
- [8 Related Posts](#)



TOYBOX 2BGPC-COMET 3D Printer



Specifications

- **Dimensions:** 440mm x 160mm
- **Material:** 300gsm matte coated paper
- **Printing:** Pantone 172 U
- **Compatibility:** UART, IPS, PC

Product Usage Instructions

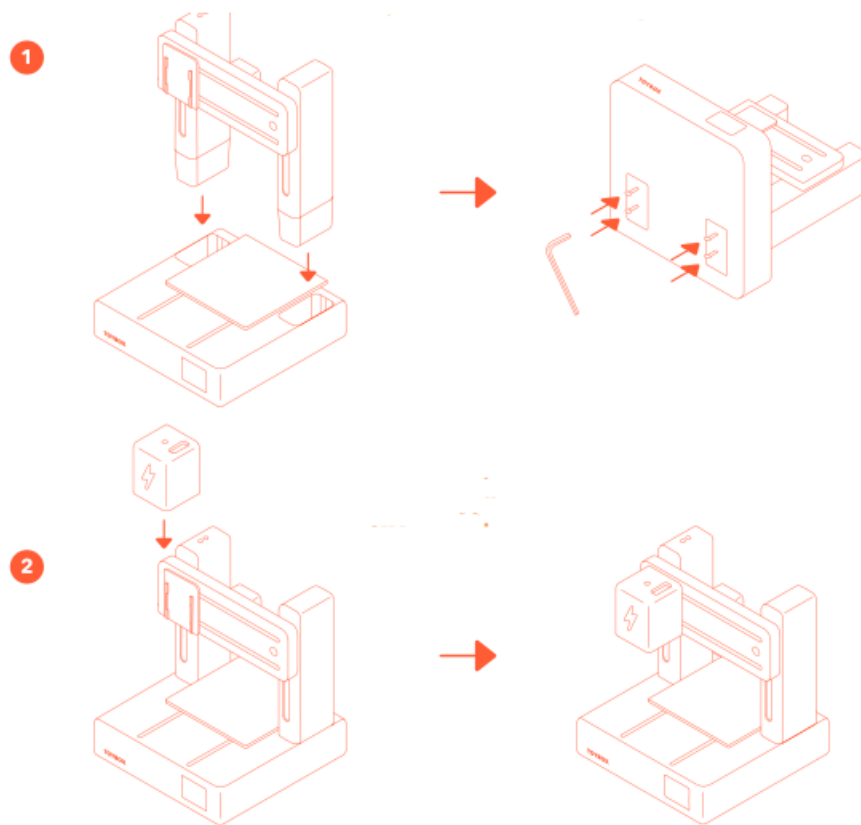
- Connect the phone to the display screen.
- Insert the screen with the rocket into the machine.
- Connect the receiver.
- The external sensing emission device can be activated after being connected.
- Install the bracket onto the base.
- Place the tablet on top of the bracket.
- Fix the box with handles to the right side of the base.
- Use the provided wrench to firmly fix all parts and complete the assembly process.
- Insert the wire into the wire hole.
- Insert the vertical descending component into the base and embed the circular component into that area.

FAQ

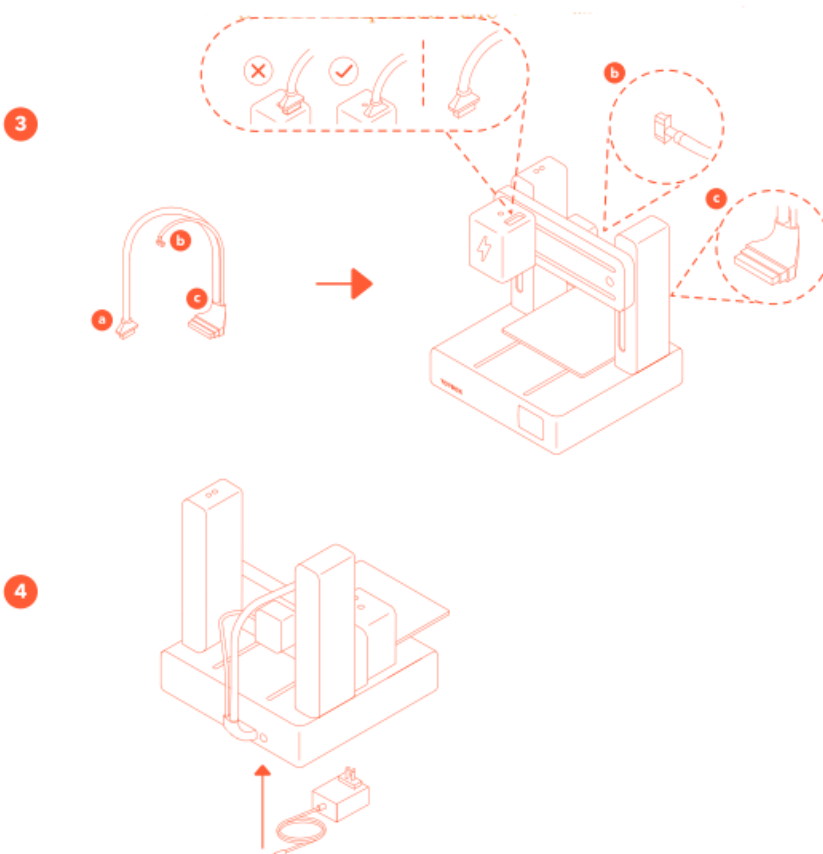
- **Q:** What should I do if I encounter interference with the device?
- **A:** Ensure proper positioning and connections. If interference persists, contact customer support for further assistance.
- **Q:** Can I make modifications to the device?
- **A:** Any changes or modifications not approved by the responsible party may void your authority to operate the equipment and could lead to undesired operation.

INSTALLATION INSTRUCTION

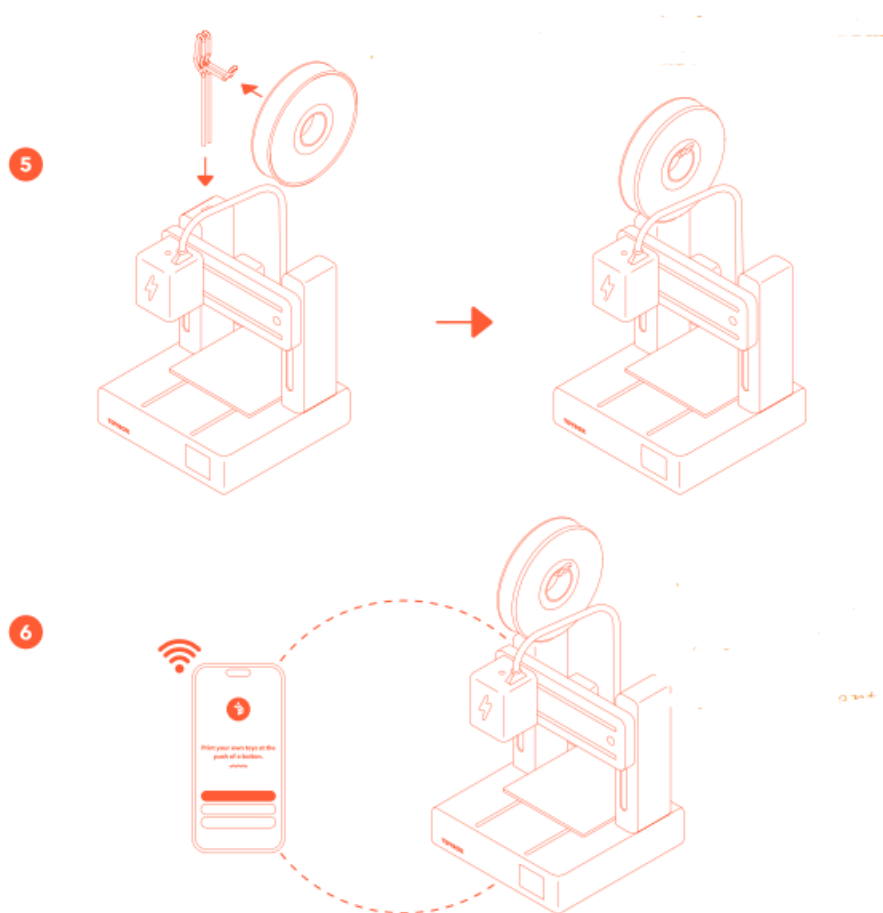
1. First, install the bracket onto the base, and then place the tablet on top of the bracket. Next, fix the box with handles to the right side of the base
2. Install the bracket structure onto the base



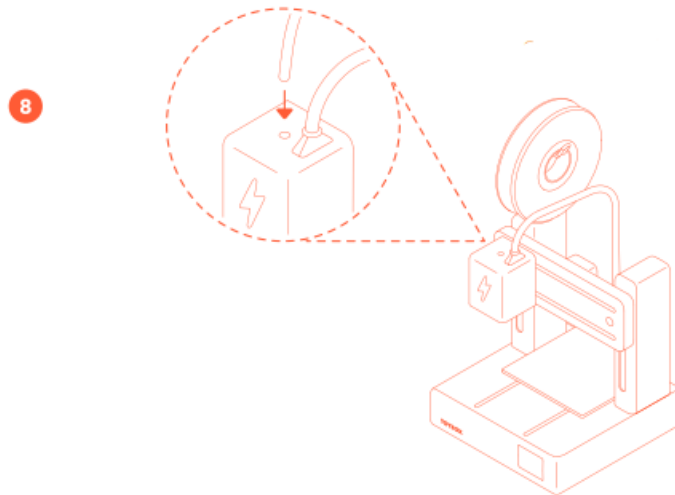
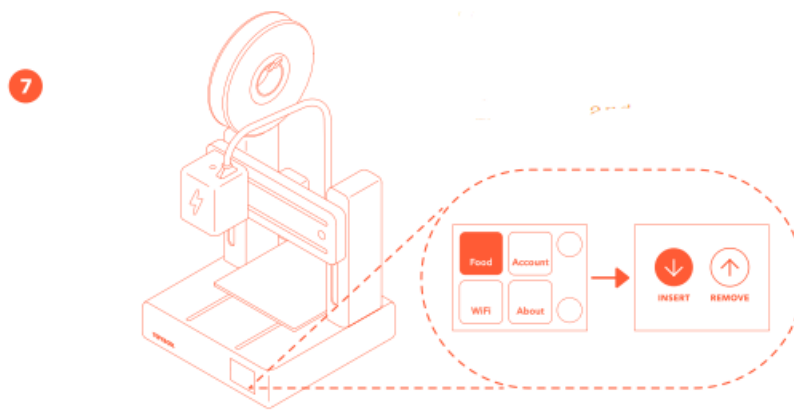
3. First, install the bracket onto the base, and then place the tablet on top of the bracket. Then fix the box with a handle to the right side of the base. Finally, use the provided wrench to firmly fix all parts and complete the assembly process
4. Insert the wire into the wire hole.



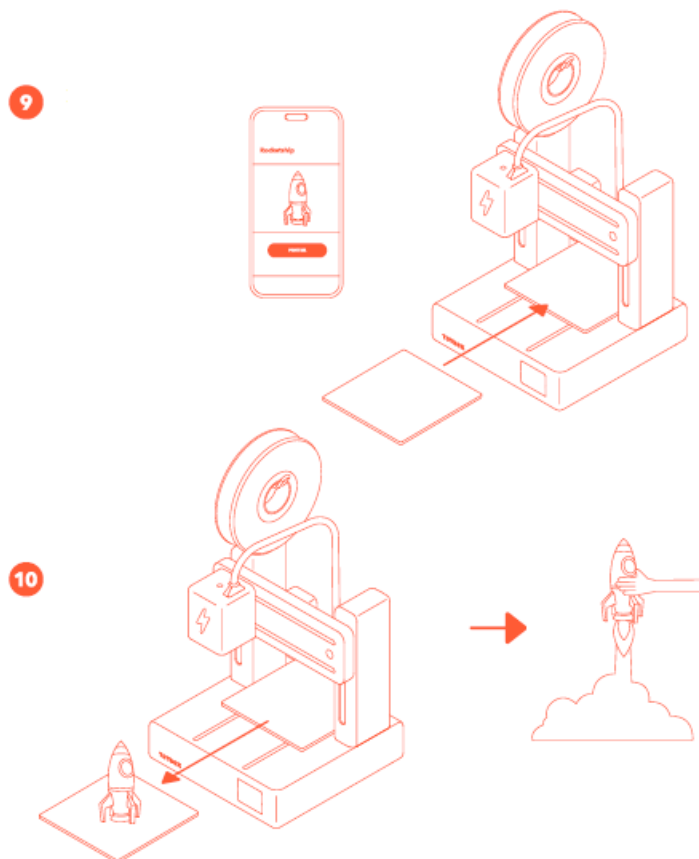
5. Insert the vertical descending component into the base and embed the circular component into that area
6. Open the WiFi connection on your phone and assemble the assembled parts



7. The left buttons are Food, Account, WiFi, and About. On the far left of the right button are 'Insert' and 'Remove'.
8. Connect the receiver



9. Connect the phone to the display screen and insert the screen with the rocket into the machine
10. The external sensing emission device can be activated after being connected.



Scan for the complete setup guide



CAUTION-ELECTRICALLY OPERATED PRODUCT

Not recommended for children under 8 years of age. Parental supervision is advised. As with all electric products, precautions should be observed during handling and use to prevent electric shock.

FCC STATEMENT

This device complies with part 15 of the FCC Rules. Operation is subject to the following two conditions:


1. This device may not cause harmful interference, and
2. this device must accept any interference received, including interference that may cause undesired operation.

Any Changes or modifications not expressly approved by the party responsible for compliance could void the user's authority to operate the equipment.

Note: This equipment has been tested and found to comply with the limits for a Class B digital device, pursuant to part 15 of the FCC Rules. These limits are designed to provide reasonable protection against harmful interference in a residential installation. This equipment generates uses and can radiate radio frequency energy and, if not installed and used in accordance with the instructions, may cause harmful interference to radio communications. However, there is no guarantee that interference will not occur in a particular installation. If this equipment does cause harmful interference to radio or television reception, which can be determined by turning the equipment off and on, the user is encouraged to try to correct the interference by one or more of the following measures:

- Reorient or relocate the receiving antenna.
- Increase the separation between the equipment and receiver.
- Connect the equipment into an outlet on a circuit different from that to which the receiver is connected.
- Consult the dealer or an experienced radio/TV technician for help.
- This equipment complies with FCC radiation exposure limits set forth for an uncontrolled environment. This equipment should be installed and operated with minimum distance 20cm between the radiator & your body.

Documents / Resources

	TOYBOX 2BGPC-COMET 3D Printer [pdf] User Guide 2BGPC-COMET, 2BGPCCOMET, 2BGPC-COMET 3D Printer, 2BGPC-COMET, 3D Printer, Printer
---	---

References

- [User Manual](#)

[Manuals+](#), [Privacy Policy](#)

This website is an independent publication and is neither affiliated with nor endorsed by any of the trademark owners. The "Bluetooth®" word mark and logos are registered trademarks owned by Bluetooth SIG, Inc. The "Wi-Fi®" word mark and logos are registered trademarks owned by the Wi-Fi Alliance. Any use of these marks on this website does not imply any affiliation with or endorsement.