



TourBox B0B5XB7GKQ Elite – Advanced Bluetooth Edition Controller User Guide

[Home](#) » [tourbox](#) » TourBox B0B5XB7GKQ Elite – Advanced Bluetooth Edition Controller User Guide 

TourBox B0B5XB7GKQ Elite – Advanced Bluetooth Edition Controller



Contents

- [1 Quick Start Guide](#)
- [2 Installation](#)
- [3 Connection](#)
 - [3.1 Connect via Bluetooth](#)
- [4 Introducing TourBox Console](#)
 - [4.1 Layout](#)
 - [4.2 Presets](#)
 - [4.3 Macro Command](#)
 - [4.4 TourMenu](#)
 - [4.5 UP, REP, Speed and Haptic Touch](#)
 - [4.6 HUD and Guide](#)
- [5 Documents / Resources](#)
 - [5.1 References](#)
- [6 Related Posts](#)

Quick Start Guide

Instead of making the content creation complicated using the keyboard, mouse, and graphic tablet, simply use TourBox Elite, a custom controller, with your drawing tablet, or use it alone with your computer. TourBox Elite converts complicated hotkey and mouse action inputs into simple, instant, and intuitive ones. More than that, it provides bountiful plugins for multiple programs. Using one hand, creatives could access everything they need in their workflow, without looking at the device.

Here we will give a brief introduction about TourBox Console.

For more information, please refer to the User Manual on our website. www.tourboxtech.com

Installation

Download the latest version of TourBox Console from our website, and follow the installation instruction on the download page.



*System Requirement:

Cable connection:

Windows 7 and above, macOS 10.11 and above.

Bluetooth connection:

Windows 10 and above, macOS 10.11 and above.

* For macOS installation, do follow the instruction and fulfill the steps in the System & Privacy Setting.

* To ensure a stable Bluetooth connection, please make sure your device is updated to Bluetooth 4.2 and above.

Connection

TourBox Elite comes with two connection methods, Bluetooth, and cable connection.

Connect via Bluetooth

Check before connection

- a) Download the latest version of TourBox Console.
- b) Install two AA batteries and turn on the Bluetooth switch right next to the battery compartment.
- c) Make sure your computer Bluetooth connection is On.

Pairing

Launch TourBox Console. Click "Add Bluetooth Device". A window says "Discovering your TourBox" would pop up.

- a) Press and hold the Bluetooth button on the back of the TourBox Elite until the front indicator starts flashing.
- b) Select your TourBox Elite and click "connect" in the pairing window.
- c) Once it's successfully paired and connected, you are good to go.

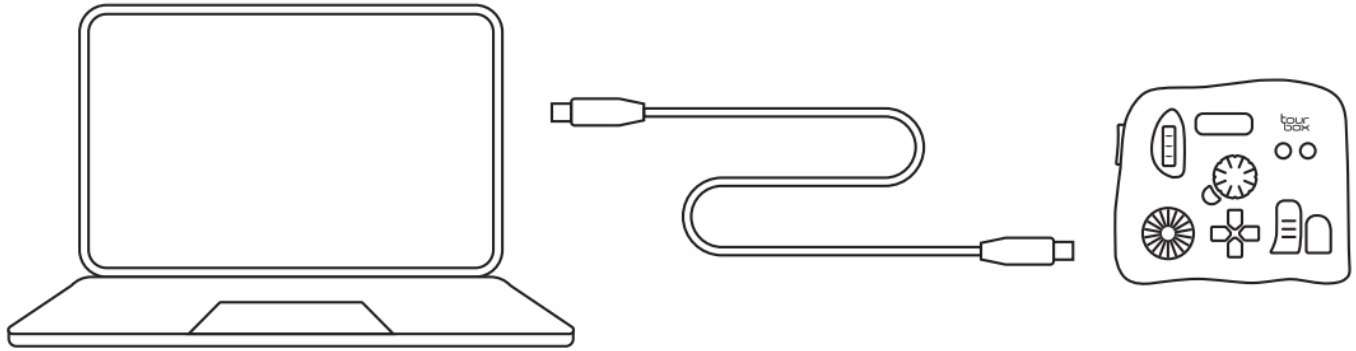
Switch to another device

- a) TourBox Elite provides dual host connection via Bluetooth. Switch to another device simply by clicking the button on the back of TourBox Elite. Make sure you connect TourBox Elite with this second device as well, using the same methods above.
- b) The indicator is at the front. Different colors represent different hosts or devices

Connect via Cable

Feel free to connect the TourBox Elite with a double-ended USB-C cable. Make sure a firm connection with your

USB ports and the indicator is on.



* The cable connection is set to override the Bluetooth connection.


Therefore, once the TourBox Elite is cable-connected, the Bluetooth connection would be disabled automatically

Introducing TourBox Console

Layout

The TourBox Console interface are separated into 3 parts, including preset list, button layout and preset settings.


Preset List

On top left, you could see a list of preset templates. You could create new presets or import the preset files from your computer. Click the hamburger “” icon on the left to rename, delete, export the existing preset, or import new ones to replace it.

Button Layout

On bottom left, there's a visual map of the button layout. Press any button on the TourBox Elite, that button would be highlighted instantaneously on the map.

Preset Settings

This section allows extensive configuration on the rotary buttons, tool buttons and assisting buttons. Click the double down arrow icon “” to unfold the button list

Rotary Buttons

These refer to the Dial, Knob and Scroll, which are invented for a rapid and precise calibration. They could be registered alone or in combination with other buttons. For instance, in Photoshop, you could use the combo of the Tall button and Knob to change brush opacity

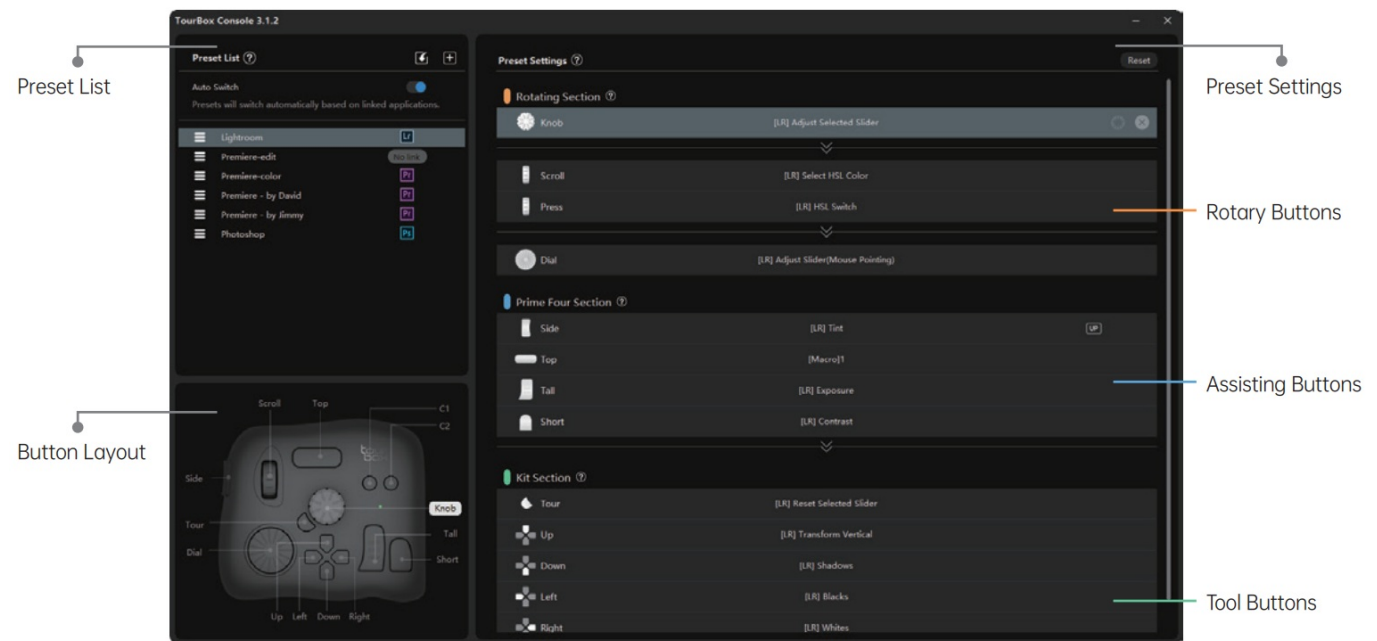
Assisting Buttons

These include the Tall, Short, Top and Side button, which support single-clicking, double-clicking and combinations.

Tool Buttons

These refer to buttons on the D-pad (short for directional pad), Tour, C1 and C2. Some of the users would create multiple presets for one software and configure the D-pad in these presets. That way, they could have various

sets of D-pad actions for the same program. They could also combine the Top or Side button with the D-pad for more input methods.



Presets

TourBox Console supports managing multiple presets simultaneously and switching among these presets via the Auto Switch or one click. Feel free to use the templates, import presets shared by other users, or create your own. We also wanted to encourage you sharing your customized preset. Send your presets to us and we would post them on our website and cite your name.

Create and Manage Presets


Preset Templates by TourBox Tech Inc

For now, we have offered 4 templates for Adobe®Photoshop®, Adobe®Lightroom®, Adobe®Premiere® (Edit), and Adobe®Premiere® (Color)

Presets Shared by Other Users

Visit our website – Downloads – Presets, and download any presets shared by users from all over the world!

Your Personalized Preset

Click the + icon "  " on the top of the preset list, to create your own preset from scratch and start customizing every single action. Here's how.

For instance, in the preset you create, to map the Short button as the Copy tool, you need to,

- In preset settings, locate the Short button.
- Click it and there goes a custom panel, input the shortcut Ctrl+C (or Cmd+C) in the top column, give it a name, say "Copy", and hit OK.
- That way, in this preset, you have the Short button registered as Ctrl+C (or Cmd+C) and its name is "Copy".

Switch among Presets

Auto Switch

On top of the preset list, you could see the Auto Switch. When the Auto Switch mode is on, TourBox recognizes the program you are using and calls out the corresponding profile you need automatically.

- Link the presets with the corresponding programs after your turn the Auto Switch on.
- You could link the same program with multiple presets. Make sure you map the built-in feature “Switch Presets” on the same button throughout these presets, so that in the same program, you could use that button to toggle among these presets.

Switch via One Click

When Auto Switch is off, toggle among presets is still possible. Here's how.

- a) Click the star icon of the desired presets. That way, you mark it down as one of your common presets.
- b) Likewise, assign “Switch Presets” on the same button throughout these presets, for instance, the Tour key.
- c) Click that button to toggle among these presets.

Macro Command

What Is It

The added Macro command on TourBox registers a series of commands via a single click. Configurable commands include keyboard shortcuts, mouse action, delay, text input, file and folder opening and link (URL) directing

How to Set Up

Here is an example of assigning macro commands on the Top button.

- a) In preset settings, locate the Top button, click it, and enter the custom panel.
- b) Find Macro (right next to the Basic), hit the + icon and give it a name.
- c) On the right section, click the + icon in the middle and start customizing actions.
- d) Add description to the actions as you like.
- e) Feel free to change the sequence of the actions by dragging.
- f) Hit OK and here you have completed the set up

Actions Included

Shortcut

The Shortcut allows single or combo input. Command repetition is also available

Delay

Here you could configure the time intervals among actions.

Mouse Action

Including single click via the mouse left button, right button and middle button, mouse double-clicking, wheel

scrolling up, wheel scrolling down, pointer moving and mouse dragging. You could choose wherever you want the command to be registered by setting up the coordinate. Action repetition is supported as well.

Text

Simply input the text directly and hit OK.

Open

Configure a button to open any file, folder, or website using your default browser.

Advanced Settings

Here in every preset, you could create a Macro list. Under every Macro, you could create multiple groups. Each group could have one or more than one actions. Here we will use the Tall button as an example to demonstrate.

- a) In the desired preset, locate the Tall button and create a Macro named "Test".
- b) Create 3 groups in this Macro, name them as Group 1, Group 2, and Group 3. Click OK.
- c) When there are more than one group, the Loop mode would be turned on by default. Under this mode, actions would run sequentially from the top to down group, one group per click. In this case, that is, from Group 1, Group 2 to Group 3, and then from Group 1 to 3 again.
- d) To use a reverse sequence, simply go back to the preset, locate the button, and you'll see a down arrow icon. Click it to change it to up.
- e) When the Loop mode is off, group actions would run from top to down for the first time, one group per click, and after that registers the last group all the time. In this case, it would run from Group 1, Group 2 to Group 3 with per click, then the fourth click and after, it would keep registering Group 3.
- f) Feel free to change the order of the groups by dragging.

TourMenu

What Is It

TourMenu is a context menu like the ones registered at mouse right-click on your computer. You could configure a unique TourMenu for every button. Actions include shortcuts, built-in features, and Macro. You could effortlessly call out a TourMenu via the TourBox, toggle and choose the action to register. This is a helpful extension and enhancement for content creators.

How to Set Up

We will be using the Short button as an example.

- a) Launch TourBox Console, in the desired preset, locate the Short button, click it, and enter the custom panel.
- b) Choose TourMenu (right next to the Macro), click the + button to create a new TourMenu and give it a name.
- c) You can assign multiple actions on a TourMenu, including shortcuts, built-in features, and Macro.
- d) Settings like template, text size and location can be configured in the advanced settings.
- e) Hit OK and the setup is done. With a single click on the Short button, you can activate its TourMenu. Then you could choose and register the desired action via the mouse cursor or TourBox Elite.

UP, REP, Speed and Haptic Touch

When moving the cursor to any action, you might see the icons like UP, REP, the sunburst one or the soundwave one. What are they?


UP

Turn the UP mode on simply by clicking the UP icon “  ”. Under this mode, command would not be registered until you let go of the button.

Click the highlighted icon again to turn it off. When the UP mode is off, the command would be registered right away at button click.

This feature is very handy when setting combo command. Turn on the UP mode of one of the buttons, so that when this button is clicked and held, there would be no command registered, until you click the second one.

REP

The REP refers to repetitive commands. Under this mode, commands would be registered repetitively when the button “  ” is held.

Speed

The sunburst icon refers to the configurable speed of the Dial, Scroll and Knob. Click the icon “ ” to turn on Slow 1 mode, click again to switch to Slow 2 mode and click for a third time to switch back to Standard mode. Slow 2 mode being the slowest and Standard mode being the fastest.

Tactile Feedback

The soundwave icon refers to the tactile feedback assigned on the Dial, Scroll and Knob. Click the icon to turn on medium level of tactile feedback (VIB 1), click again to switch to higher level (VIB 2) and click for a third time to turn it off.

HUD and Guide

Click the TourBox Console icon in the taskbar or menu bar, you would see a menu that includes HUD, Guide and more.

HUD

The HUD, short for heads up display, showcases the commands mapped on the directional pad.

- Right click the icon of TourBox Console, there's the option to open or close the HUD.
- You could also map the built-in feature “Open/Close HUD” on any button to control the HUD.
- Right click the HUD on the screen to change the color, size, and opacity.
- Under the Auto Switch mode, TourBox Console would switch to the customized HUD in that preset as well.

Guide

The Guide is a map of the TourBox layout and the commands mapped. This is one of the quick start tools that help the beginners.

- a) Right click the icon of TourBox Console, there's the option to open or close the Guide.
- b) You could also map the built-in feature “Open/Close Guide” on any button to control the Guide.

The keyboard was purposely invented for typing and wasn't built for digital content creation. People try to find a

way to cope with the keyboard but obviously, it kills the creativity and productivity. TourBox Elite, instead, delivers effective and intuitive control experience in all types of content creation. Designed in a compact size, it comes in with a powerful custom system, enables natural multitask and allows one-hand eye-free control so that you could focus on the screen and your creation only.

We bring added value to the product via rapid software upgrade. We listen to our customers and develop plugins for various programs. We believe this would bring the premium experience which is not possible using the keyboard and mouse only.

For more information, please refer to the User Manual on our website. If you need more help, contact us via email or social media. Have a good day!

Email:

support@tourboxtech.com

Instagram:

@tourboxofficial

Facebook:


@TourBoxofficial

Twitter:




@Tourboxtech



Documents / Resources

<p>QUICK START GUIDE</p> 	<p>TourBox B0B5XB7GKQ Elite - Advanced Bluetooth Edition Controller [pdf] User Guide B0B5XB7GKQ Elite - Advanced Bluetooth Edition Controller, B0B5XB7GKQ, Elite - Advanced Bluetooth Edition Controller, Advanced Bluetooth Edition Controller, Bluetooth Edition Controller, Edition Controller, Controller</p>
--	---

References

-  [TourBox - The Ultimate Controller for Creators](#)
-  [TourBox - The Ultimate Controller for Creators](#)
-  [TourBox](#)