



# TOURATECH Connect App User Manual

[Home](#) » [Touratech](#) » TOURATECH Connect App User Manual 

## Contents

- [1 TOURATECH Connect App](#)
- [2 Introduction](#)
- [3 Warnings/safety instructions/safety-relevant instructions for use](#)
- [4 Product notes](#)
- [5 Quick start guide](#)
- [6 First steps](#)
- [7 Troubleshooting](#)
- [8 General information](#)
  - [8.1 Dongle](#)
  - [8.2 APP](#)
- [9 Mounting instructions](#)
- [10 Documents / Resources](#)
- [11 Related Posts](#)

# TOURATECH

**TOURATECH Connect App**



## Introduction

Thank you for choosing TOURATECH Connect. We wish you a lot of joy with the use.

Please read and follow the safety instructions and then continue with the quick start guide.

Touratech Connect offers you the opportunity to enhance your driving experience by giving you extensive access to driving and vehicle data. No matter if you are driving curves or want to see gear shift statistics, there is something for every type of driver. By connecting the Plug and Play dongle to your vehicle and connecting the Touratech Connect application on your smartphone you get direct access to a variety of advanced display functions. Design your own vehicle display with unprecedented functions.

You will find the latest version of this manual at <http://www.touratech-connect.com>

TOURATECH Connect is the trade name of a motorcycle data transmission system developed by Touratech GmbH. In addition to the trade name of the overall system the designations "TOURATECH Connect Dongle" are used for the hardware component and "TOURATECH Connect Application" for the software component of the system.

The installation of the hardware component on your vehicle requires neither tools nor special knowledge. By means of a vehicle-specific connection cable it is done according to the plug-and-play principle.

## Warnings/safety instructions/safety-relevant instructions for use

### GENERAL

The safe use of the application within road traffic requires the user to comply with the local laws.

### OPERATIONS

The haptic condition of the mobile device and the application is prohibited during vehicle operation according to §23 StVO.

### DRIVING CAPABILITIES

The user is required to drive the vehicle according to his driving skills and the regulations by law. Application functions should be used considerably and in consideration of the driving skills.

## **USAGE BEHAVIOR**

Display functions should not be understood as an incentive for negative adjustment of driving behavior. In road traffic, the attention of the user must serve to ensure a considerate operation of the vehicle.

The user is responsible for his own behaviour and the behaviour towards other road users.

## **CURVE TILLING**

The functional scope of the application includes the display of curve inclinations (vehicle-specific). Touratech recommends to use this function to reflect your own driving style in a safety-critical way. Not only the own driving skills but also physical restrictions of the vehicle (freedom of movement, tire type, tire shape, tire wear) as well as the current state of the environment (ground conditions, temperature, weather) should be considered.

## **EXPOSURE TO HEAT**

When installing the TOURATECH Connect Dongle make sure that the device is protected from excessive heat.

The device must not be exposed to temperatures higher than

70 °C / 158°F. Accordingly, direct or indirect engine or exhaust contact must be avoided.

## **FAULTY DISPLAY VALUES**

It cannot be excluded that display values of the application are calculated and displayed incorrectly. This also applies to the correct use of the application by the user.

## **DECLARATION OF CONFORMITY**

Herewith Touratech GmbH declares that the radio system type TOURATECH Connect complies with the directive 2014/53/EU and 2011 /65/EU. The complete text of the EU Declaration of Conformity is available at the following internet address: <http://www.touratech-connect.com>

## **Product notes**

### **Connection cable**

A vehicle-specific connection cable is required for the vehicle installation. The connection cable is part of the respective scope of delivery. Use this connection cable exclusively for connecting the TOURATECH Connect Dongle. Failure to do so may result in serious damage to the vehicle or equipment.

Note vehicle approval/certification

Approved for vehicle use according to UN-ECE component approval.

### **PIN/PUK**

PIN and PUK are used to restrict access to unauthorized third parties. PIN and PUK must not be forgotten simultaneously. Otherwise, the device can no longer be used. The PIN is required to log in or to use the device. The PUK is required to reset the device to factory settings.

### **Limitation of use**

The APP does not require a permanent Internet or telephone network connection. The operation is therefore not subject to any usage restrictions. The product is designed for complete offline use. Only the Bluetooth connection between dongle and mobile device must not be interrupted.

### **Vehicle restriction Display functions**

The display functions of the application depend on the available sensor values of the vehicle. Accordingly, the functions differ depending on the vehicle model and also special equipment. Both vehicle model and optional equipment can be selected within the application.

### **Change of motorcycle**

When changing a motorcycle, it is important to make sure that the vehicle is supported by the software, i.e. that the vehicle can be selected within the application. Furthermore, you can find out on our product website whether the existing connection cable can still be used.

Change of user or change of the smartphone

The dongle only stores the pairing information for a single mobile device (smartphone). If a new mobile end device

is to be connected, this can be done by a repeated connection attempt. At least two connection attempts are required for the dongle to overwrite the pairing information of the last used device.

If, on the other hand, the user or the connected mobile device is changed frequently, it must be ensured that the mobile device (smartphone) does not have outdated pairing information regarding the dongle. The pairing information can be deleted in the Bluetooth settings of the respective smartphone operating system. Thereupon a new connection is possible. As described above, several connection attempts are required to delete the outdated pairing information on the dongle side.

## Quick start guide

- TOURATECH Connect application for Android™ or iOS™ obtain from Google Play Store for Android™ or App Store for iOS™ devices
- Switch off the vehicle completely  
That means: deactivate ignition and wait 2 minutes
- Fitting the TOURATECH Connect Dongle in accordance with the installation instructions. (see 8)
- Switch on vehicle ignition
- Turn on Bluetooth
- Start TOURATECH Connect application
- Open Bluetooth device selection within the application, start scanning process, select and connect device
- Complete device registration and log in within the application
- Secure PIN and PUK! (see 5.4)
- Select predefined data display or create your own data display in the design area tab

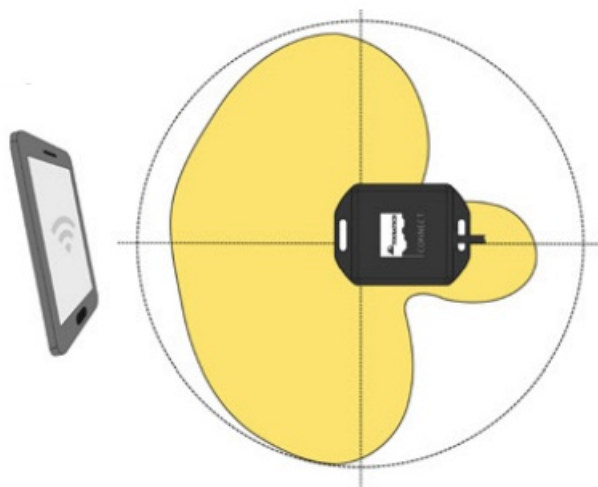
## First steps

### Installation of the TOURATECH Connect Dongle

Switch off the vehicle completely. I.e. deactivate ignition and wait 2 minutes. It is not necessary to disconnect the battery.

Connect the vehicle-specific connection cable to the vehicle at the designated place. The detailed connection description can be found in the information of the vehicle-specific connection cable.

Now connect the vehicle-specific connection cable with A directional antenna is used in the dongle. Accordingly, the transmission power is not the same in every direction of propagation.



### Alignment recommendation:

For best possible utilization of the transmitting power the cable of the dongle should point away from the mobile device. Furthermore, the device does not contain orientation sensors, which may require special installation restrictions. Attach the dongle in a suitable place. Reachability of the device after installation does not have to be

guaranteed, as error cases are automatically reset and the device has no physical keys. Make sure that all plug connections are securely locked and that neither cable nor dongle are pinched or can chafe.

### **Removal of the TOURATECH Connect Dongle**

Switch off the vehicle completely (see 5.1 ), disconnect plug connections. Close unused, open plug connection with original dummy plug to prevent ingress of dust and water. Furthermore, these dummy plugs have components such as termination resistors (bus termination) which are required for the trouble-free operation of the vehicle bus.

### **How do I connect my Smartphone with the dongle**

1. Switch on vehicle ignition
2. Turn on Bluetooth on your smartphone
3. TOURATECH Connect Start application
4. Within the application, open the Bluetooth device selection and start the scanning process start. Select the device "TT\_CAN" from the result list and connect it.
5. Complete the device registration within the application and log in.
6. Select the suitable vehicle/ vehicle type
7. Select a predefined data display or create your own data display in the Design Area.

### **PIN/ PUK**

In addition to the encrypted Bluetooth® LE connection, a Personal identification number (PIN) and Personal unlocking key (PUK) is used. You can define PIN and PUK independently with up to 8 numbers. These should not be forgotten!

**FORGOT PIN:** Entering the PUK instead of the PIN will reset the device. A new device registration is then possible.

**FORGOT PUK:** As long as the PIN is known, the device can be used without restrictions.

**FORGOT PIN and PUK:** If both PIN and PUK are forgotten, the device can no longer be used. Reactivation by the manufacturer is also not possible.

### **Troubleshooting**

Connection problems: Delete outdated pairing information of the dongle (if available) in the Bluetooth settings menu of your smartphone. Then try to re-establish the connection within the Touratech Connect application. In some cases two connection attempts are necessary.

Unsuccessful scan: The ignition of the vehicle must be switched on and the device must be fully plugged in. The radio system must not be surrounded by a closed metal cover. Make sure that there is not already a connection to another device. Make sure that there is not already a faulty connection to your device. To do this, deactivate and reactivate the Bluetooth of your smartphone and use the Touratech application for scanning and establishing the connection.

Disconnections: If the connection is frequently interrupted during use, the dongle should be adjusted accordingly to optimize the signal strength. (see 5.1) The connect on cable of the dongle should ideally point away from the display device. The dongle must not be surrounded by a closed metal cover.

Display function generally does not work: In this case the function accesses data that your vehicle does not provide. The selection of such functions is possible if the vehicle was selected incorrectly or the selection of the available optional extras is incorrect.

### **General information**

TOURATECH Connect serves exclusively to display vehicle data on mobile devices. The direct modification of vehicle data in the vehicle system is not supported.

## Dongle

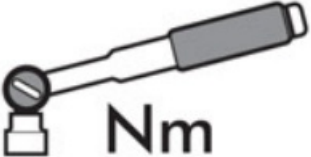
- Supply voltage range: 6-24 V
- Frequency range 2402-2480 MHz
- Maximum transmission power (nominal): 1.7 dBm=> 1.48 mW
- Operating temperature range: – 40 to +70 °C, 40 fo 158 f
- Device type radio module:Bluetooth® LE v4.0
- Power consumption operation: < 30 mA
- Power consumption Inactive: < 20µA
- Device safety: Reverse polarity protection

## APP

The software is a multi-platform application for iOS™ and Android™ The functionality is guaranteed from:

- iOS: 11.x.y
- Android: 5.0.2 Lollipop

We recommend having the accessory parts fitted by a speclallst workshop.



	Steel 8.8	Inox A2	
M 4	2,7	0,8	Nm
M 5	5,5	1,7	Nm
M 6	9,7	3,0	Nm
M 8	23,0	7,9	Nm
M 10	47,0	14,0	Nm
M 12	80,0	24,0	Nm
M 14	130,0	-,-	Nm
M 16	196,0	59,0	Nm
M 18	270,0	-,-	Nm
M 20	385,0	114,0	Nm

These Instructions are written based on our current state of knowledge. Information is provided without any guarantee as to its accuracy. Subject to technical modifications.

The order of assembly steps must be followed.

Touratech accepts no liability for incorrectly fitted parts and resulting material damage or personal injury!

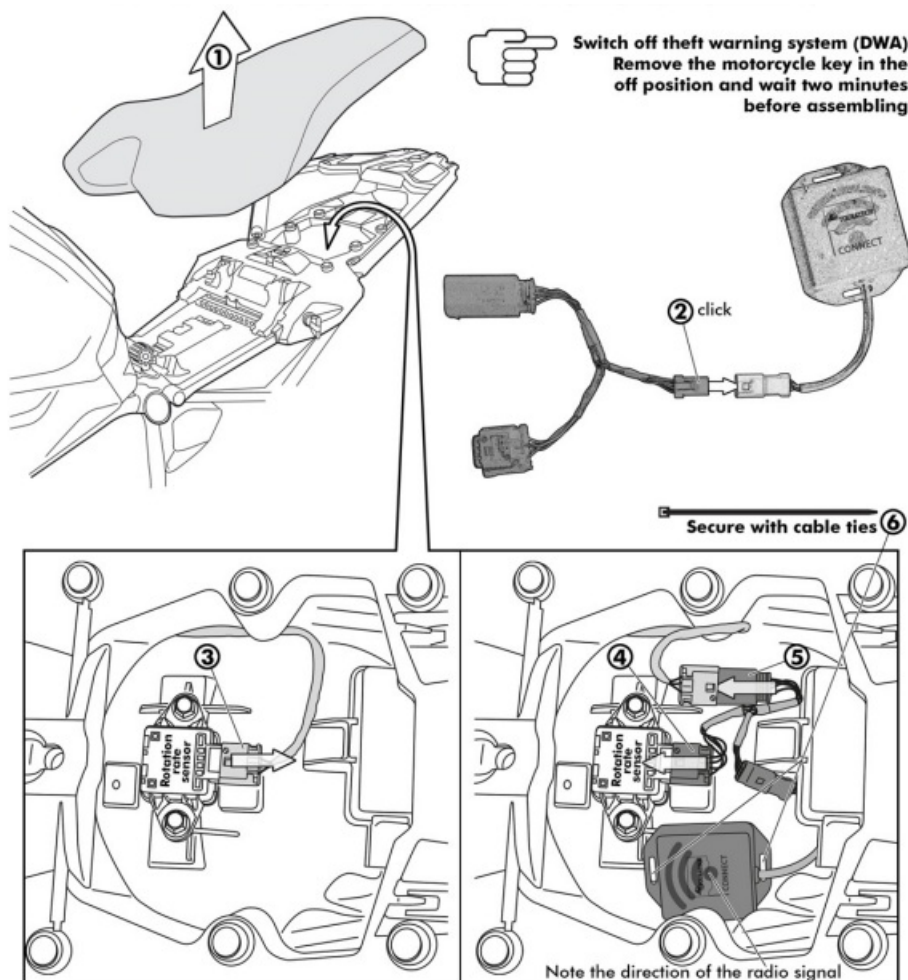
Please observe applicable road vehicle (construction and use) regulations as well as EC/ECE Directives and applicable laws in your country. If parts are fitted which require inspe<tion and/or approval after fitting, take your vehicle to a testing station immediately and have the vehicle papers updated.

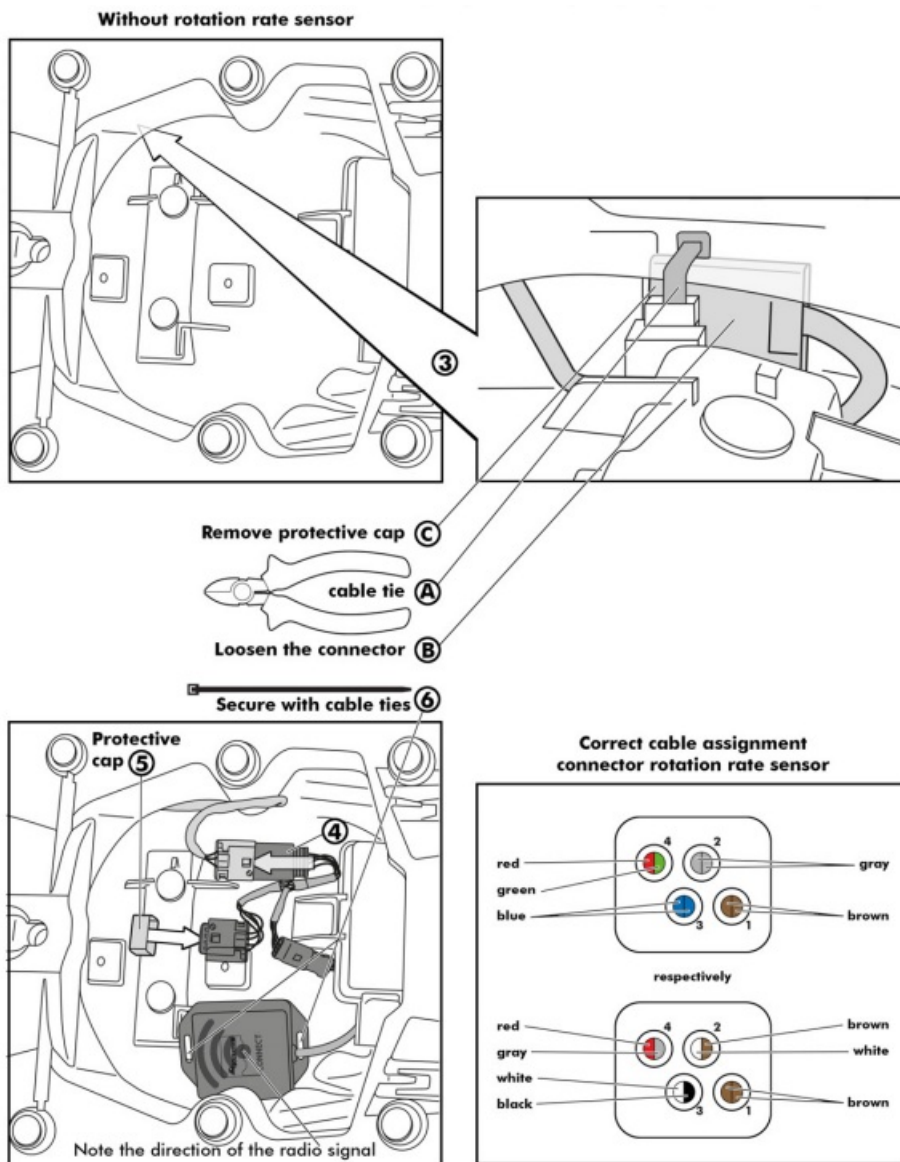


Check and if necessary tighten all bolted connections after 50 km.

- Standard tightening torques in Nm for bolted connections with strength class 8.8.
- For special tightening torques refer to your specialist workshop!
- Please take into account that fitting panniers, crash bars, foot peg lowering kits (rider and pillion), Kickstand enlargement plate, front spoilers and engine guards may restrict the bike's lean angle!
- If modifications are made to the fairing, stem, handlebar, fairing parts, etc., ensure that electrical wiring, brake lines, accelerator and clutch cables are refitted correctly.
- Check clearance, both sides with full steering lock. Always disconnect the battery when working on the electrics!
- We recommend cutting protective film to size and applying it to impact areas that are likely to be chipped by stones.
- Work on the brake system and suspension should always be carried out by a specialist workshop.
- The maximum load on luggage racks is 5 kg! Luggage racks Zega Pro TC is 10 kg!
- If other original accessories or aftermarket accessories are used, ensure clearance, fitment and do not come into contact with other parts!
- Apply conventional lubricant to stainless steel bolts prior to assembly.
- PDF fitting instructions also can be downloaded from the Touratech webshop.

## Mounting instructions








## TOURATECH GmbH

Auf dem Zimmermann 7-9 D-78078 Niedereschach

Telefon: +49 (0) 7728 9279-0 Fax: +49 (0) 7728 9279-1112

eMail: [info@touratech.de](mailto:info@touratech.de)

## Documents / Resources

  	<p><b><a href="#">TOURATECH Connect App</a></b> [pdf] User Manual  09-092-0010-0, Connect, App, Connect App</p>
--	---