



Touchstone WIFI-ENABLED SMART FIREPLACE User Guide

[Home](#) » [Touchstone](#) » Touchstone WIFI-ENABLED SMART FIREPLACE User Guide 



Contents

- [1 Touchstone WIFI-ENABLED SMART FIREPLACE](#)
- [2 Touchstone® Smart Fireplace WiFi Setup Guide](#)
- [3 Touchstone® Smart Fireplace WiFi Setup Guide](#)
- [4 Touchstone® Smart Fireplace WiFi Setup Guide](#)
- [5 FCC Caution](#)
- [6 Documents / Resources](#)
 - [6.1 References](#)
- [7 Related Posts](#)

Touchstone WIFI-ENABLED SMART FIREPLACE



Automatic Disconnect After 24 Hours of Non-Use

As an added safety feature, your Touchstone® Smart Electric Fireplace will automatically disconnect from WiFi after 24 hours of consecutive hours of non-use. This helps to ensure the fireplace is not inadvertently turned on by app after an extended period of time. To re-enable the WiFi connection, simply hold down the FLAME button on the fireplace touchscreen for 15 seconds until the display shows P4.

Fireplace Models Supported

The following Touchstone Home Products Electric Fireplace models are WiFi-Enabled and powered by the Tuya Smart App:

- Sideline Elite Series: 80036, 80037, 80038, 80042, 80044, 80049, 80050
- Sideline Infinity Series: 80045, 80046, 80051
- Chesmont Mantel Series: 80033, 80034
- Forte Elite Series: 80052

Touchstone® Smart Fireplace WiFi Setup Guide

This WiFi Setup Guide is only for WiFi-Enabled Touchstone Home Products Electric Fireplaces. Fireplaces that are WiFi enabled will have a WiFi Symbol in the control panel area of the fireplace.



Touchstone® WiFi enabled electric fireplaces are powered by Tuya Smart. Follow the steps below to connect your fireplace to your home network and operate through the Tuya Smart app.

Setting Up Tuya Smart App and Account

1. On your mobile device, download the Tuya Smart App from the appropriate app store or click the QR Code provided to download the app.



2. Once the Tuya Smart App is installed, click on the app icon to open the app and create a new account.



3. Once a new user name has been created, you will be sent a Verification Code. Enter the Verification Code.

Enter Verification Code

A verification code has been sent to your email

4. Set up account password.



Set Password



6 to 20 characters, including letters and digits

Done

1234567890

qwertyuiop

asdfghjkl

⬆️zxcvbnm⬆️

?123, . ⬅️

5. After account is created, log into the account and select the Add Device button.



6. To add your Touchstone® smart fireplace, select the Add Manually option (1) at the top of the screen and select the Small Home Appliances tab (2) on the left side of the screen.

Scroll down and select the

Heater (Wi-Fi) (3) icon.



7. Next, you will configure your internet gateway. Click on the Configure button.



8. Place the fireplace in WiFi Pairing Mode by powering on the fireplace and pressing and HOLDING the POWER BUTTON on the fireplace control panel until the display reads "P0". Once in pairing mode, the flame colors on the fireplace will flash.

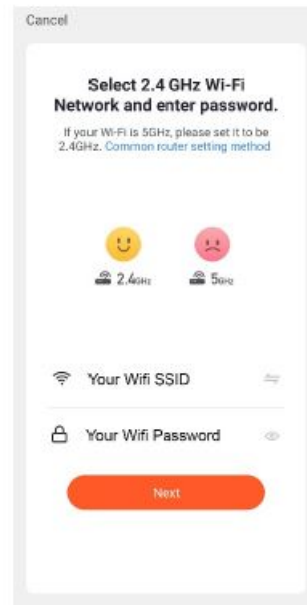


9. Enter WiFi Access Point information to connect to your WiFi Network. Enter your WiFi SSID (Network Name) and your WiFi password and click the NEXT button.

IMPORTANT: The 2.4GHz band on your WiFi router must be enabled in order to connect the fireplace to your network.

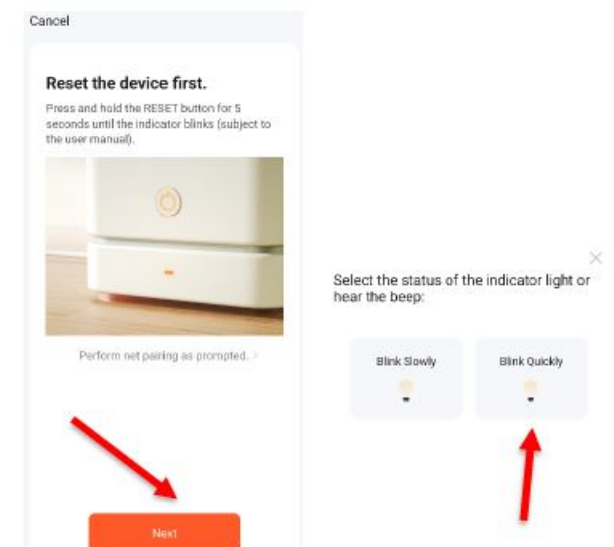
IMPORTANT: You may need to disable the 5GHz band on your WiFi router to connect the fireplace if it does not successfully connect the first time.

Please see your router's user manual for instructions on disabling the 5GHz WiFi band. The 5GHz band can be re-enabled after pairing of the fireplace is complete.

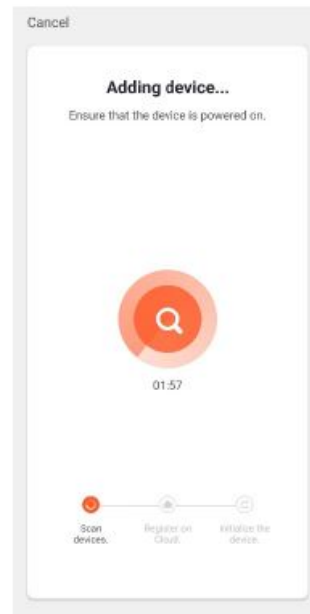


10. Once the fireplace is in WiFi Pairing Mode, press the NEXT button on the "Reset the Device First" page. Then click the "Blinks Quickly" button to start the pairing process.

IMPORTANT: You WILL NOT need to RESET THE DEVICE FIRST during this process. As Tuya Smart can be set up to use all different types of smart home devices, the reset is not needed for Touchstone Home Products smart fireplaces.



11. The fireplace will now be added to your network and the Tuya Smart app.

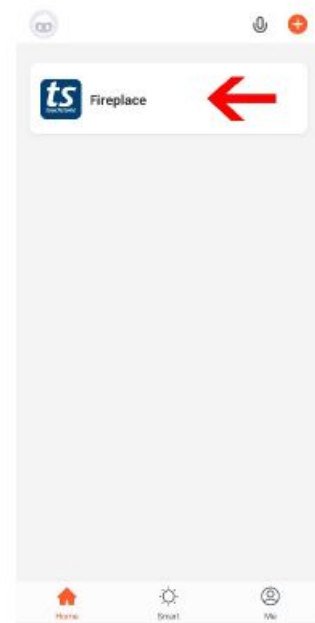
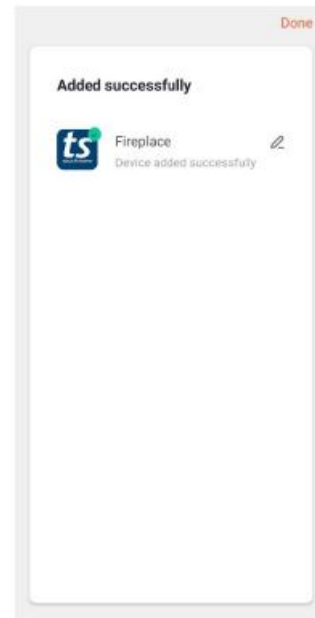


12. When complete,

Touchstone® smart fireplace will now be successfully added to your network and the Tuya Smart app.

You can rename your fireplace by clicking the edit icon next to the FIREPLACE name.

13. To control your smart fireplace, open the Tuya Smart App and click on your fireplace.



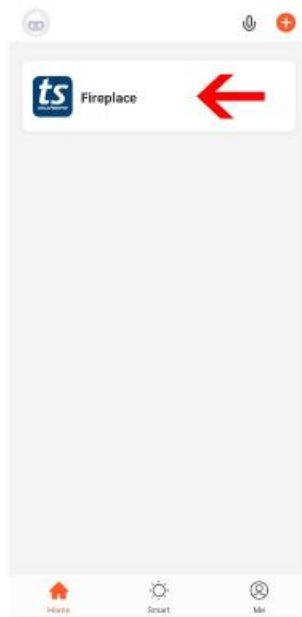
Set Up Voice Commands for Your Smart Electric Fireplace

With the Tuya Smart app, you can use your Amazon® Alexa and Google® Home device voice commands to control the power and heat temperature of your connected Touchstone® WiFi enabled electric fireplace. You must use the Tuya Smart app to pair your fireplace with your voice command devices. For the most up-to-date device pairing instructions, visit the Tuya Smart app website.

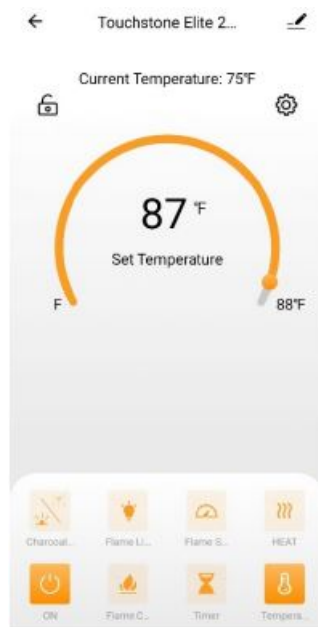
Touchstone® Smart Fireplace WiFi Setup Guide

Using the Tuya Smart App to Control Your Smart Fireplace

1. To control the fireplace via a mobile device, launch the Tuya Smart App and click on your fireplace.



2. After selecting the fireplace, you can now control the fireplace settings.



Video Instructions for Pairing Fireplace and Tuya Smart App

Scan the QR code below to watch video instructions for pairing your Touchstone WiFi Enabled Smart Electric Fireplace to the Tuya Smart app:



Touchstone® Smart Fireplace WiFi Setup Guide

Fireplace Controls

- **POWER BUTTON:** Turns the fireplace ON and OFF.

NOTE: When the power button is pressed to turn the fireplace off, the fireplace will remember the last flame brightness/color, flame motor speed, and ember bed brightness/color used. When the fireplace is powered back on, it will use the previous setting before the fireplace was turned off.

- **FLAME COLOR BUTTON:** Changes the color of the flames. Pressing the button cycles through 6 color options.
- **EMBER BED COLOR BUTTON:** Changes the color of the ember bed.
- **FLAME INTENSITY BUTTON:** Changes the brightness of the flames. Pressing the button cycles through 5 flame brightness settings.
- **FLAME SPEED BUTTON:** Changes the speed of the flames. Pressing the button cycles through the 3 flame speeds.
- **HEAT BUTTON:** Changes the heat settings. Pressing the button turns the heater on. There are 2 heat settings, LO and HI.
- **TEMPERATURE BUTTON:** Sets the shutdown temperature of the thermostat. The thermostat can be set from 68° to 88° F.
- **TIMER BUTTON:** Sets the shut-off timer. The shut-off timer can be set from 30min to 8 hours.

Disconnecting / Reconnecting the Fireplace from the Tuya Smart App Disconnect Your Smart Fireplace from the Tuya Smart App

To disconnect from the Tuya Smart App, do the following:

1. Press and HOLD the flame color changing button on the fireplace control panel for 10-15 seconds.
2. The digital display on the fireplace will display P0 after disconnection.

Re-Enabling WiFi and Reconnecting Your Smart Fireplace to the Tuya Smart App

In accordance with CSA Certification requirements, if the fireplace is not used in a consecutive 24-hour period, the WiFi connection on the fireplace will disconnect. Should the fireplace become unresponsive via the Tuya Smart App or Amazon Alexa and Google Assistant, please follow the instructions below for re-enabling the WiFi connection on the fireplace and reconnecting the fireplace to the Tuya Smart App, Amazon Alexa, and Google Home:

Re-Enable WiFi and Reconnect to the Tuya Smart App

1. Turn the fireplace ON with either the Power button on the fireplace or the Power button on the Remote Control.
2. Press and HOLD the flame color changing button on the fireplace control panel for 10-15 seconds.
3. The digital display on the fireplace will display P4 and restore the connection.

When the WiFi connection on the fireplace is enabled, there 2 dashes will be shown on the display.



Automation Disconnection When Heat Exceeds 88° F/ 30° C

When connected to a mobile device, if the fireplace detects that the ambient room temperature is equal to or exceeds 88 F/30 F, the fireplace will automatically turn off the heater and disconnect from the mobile device. To restore the connection, press and HOLD the flame color changing button on the fireplace control panel for 5 seconds until the fireplace display reads P4 and the mobile device will automatically reconnect.

FCC Caution

This device complies with part 15 of the FCC Rules. Operation is subject to the following two conditions:

1. This device may not cause harmful interference, and
2. this device must accept any interference received, including interference that may cause undesired operation.

Any Changes or modifications not expressly approved by the party responsible for compliance could void the user's authority to operate the equipment.

Note:

This equipment has been tested and found to comply with the limits for a Class B digital device, pursuant to part 15 of the FCC Rules. These limits are designed to provide reasonable protection against harmful interference in a residential installation. This equipment generates uses and can radiate radio frequency energy and, if not installed and used in accordance with the instructions, may cause harmful interference to radio communications. However, there is no guarantee that interference will not occur in a particular installation. If this equipment does cause harmful interference to radio or television reception, which can be determined by turning the equipment off and on, the user is encouraged to try to correct the interference by one or more of the following measures:

- Reorient or relocate the receiving antenna.
- Increase the separation between the equipment and receiver.
- Connect the equipment into an outlet on a circuit different from that to which the receiver is connected.
- Consult the dealer or an experienced radio/TV technician for help.

This equipment complies with FCC radiation exposure limits set forth for an uncontrolled environment. This equipment should be installed and operated with minimum distance 20cm between the radiator & your body.

Documents / Resources

	<p>Touchstone WIFI-ENABLED SMART FIREPLACE [pdf] User Guide WIFI-ENABLED SMART FIREPLACE, SMART FIREPLACE</p>
---	---

References

- [TS Touchstone Home Products Electric Fireplaces, TV Lifts, and Cabinets – Touchstone Home Products, Inc.](#)