



Toucan TSLC10WU Security Light Camera User Guide

[Home](#) » [Toucan](#) » Toucan TSLC10WU Security Light Camera User Guide 



Security Light Camera
TSLC10WU
User Guide



Contents

- [1 Items Included](#)
- [2 Get to know your Security light Camera](#)
- [3 Set up your Security Light Camera](#)
- [4 Install your Security Light Camera](#)
- [5 Tools Needed](#)
- [6 Regulations & Compliance](#)
- [7 Documents / Resources](#)
- [8 Related Posts](#)

Items Included



Get to know your Security light Camera



Set up your Security Light Camera

1. Download the Toucan App



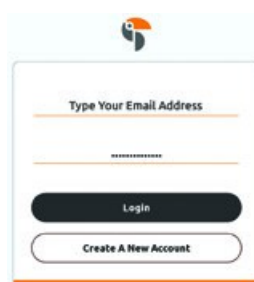
<https://toucansmarthome.com/pages/smarthomeapp>

Scan QR code or visit www.toucansmarthome.com/pages/smarthomeapp

Available at Apple® App Store® and Google Mar

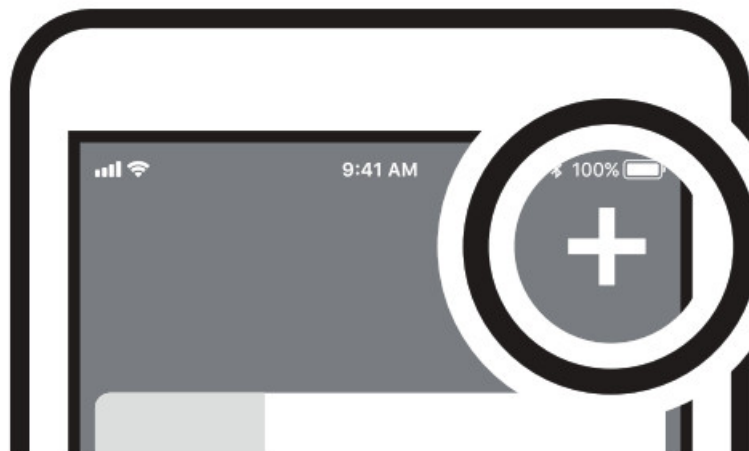
2. Login to the App

Create your Toucan account and login



3. Add and pair your device

Tap the "+" to add a device



Follow the In-App instructions and device voice prompts to complete the setup

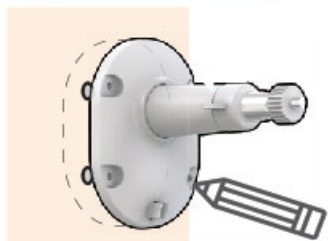


LED Description

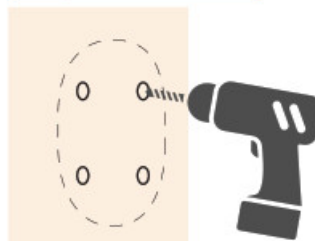
Flashing BLUE	Setup Mode
Flashing PURPLE	Connecting to the cloud server, DO NOT TURN OFF POWER
Flashing RED	Connection Failed

Install your Security Light Camera

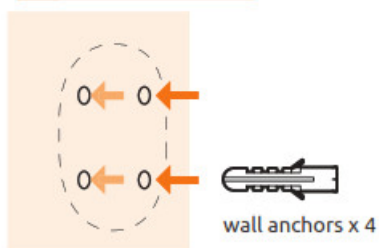
1 Mark the holes



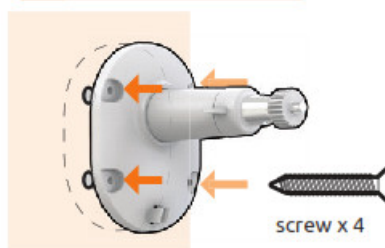
2 Drill the holes



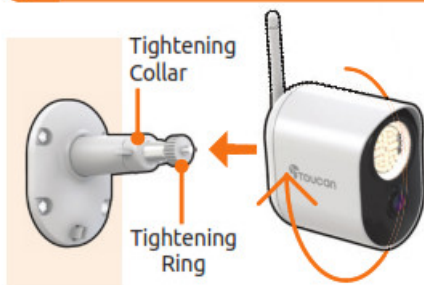
3 Insert anchors



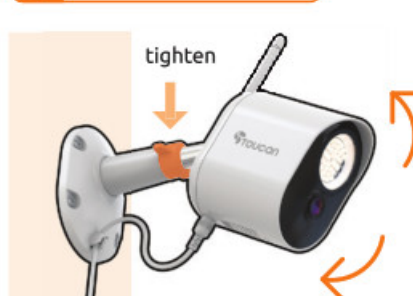
4 Attach the mount



5 Attach the Security Light Camera



6 Tighten the mount



Tools Needed



1/4" Drill bit



Drill



Philips
screwdriver
(cross head)

For a detailed setup procedure, please refer to the Toucan website (www.ToucanSmartHome.com) or scan the QR code.



<https://toucansmarthome.com/pages/slc-qsg>

Regulations & Compliance

Fcc Statement

Warning: Changes or modifications to this unit not expressly approved by the party responsible for compliance could void the user's authority to operate the equipment.

NOTE: This equipment has been tested and found to comply with the limits for a Class B digital device, pursuant to Part 15 of the FCC Rules. These limits are designed to provide reasonable protection against harmful interference in a residential installation. This equipment generates, uses, and can radiate radio frequency energy and, if not installed and used in accordance with the instructions, may cause harmful interference to radio communications.

However, there is no guarantee that interference will not occur in a particular installation. If this equipment does cause harmful interference to radio or television reception, which can be determined by turning the equipment off and on, the user is encouraged to try to correct the interference by one or more of the following measures:

- Reorient or relocate the receiving antenna.
- Increase the separation between the equipment and receiver.
- Connect the equipment into an outlet on a circuit different from that to which the receiver is connected.
- Consult the dealer or an experienced radio/TV technician for help.

This device complies with Part 15 of the FCC Rules. Operation is subject to the following two conditions: (1) This device may not cause harmful interference. (2) This device must accept any interference received, including interference that may cause undesired operation.

ISED Regulatory Compliance This device contains license-exempt transmitter(s)/receiver(s) that comply with Innovation, Science, and Economic Development Canada's license-exempt RSS(s). Operation is subject to the following two conditions:

1. This device may not cause interference.
2. This device must accept any interference, including interference that may cause undesired operation of the device.

RF Exposure Compliance

This equipment complies with FCC/IC radiation exposure limits set forth for an uncontrolled environment. This equipment should be installed and operated with a minimum distance 20cm between the radiator and your body. Cet équipement est conforme aux limites d'exposition aux radiations FCC/IC Etchlies pour un environnement non contrea Cet équipement doit etre installe et utilise avec une distance minimale de 20 cm entre le radiateur et votre corps.

For North and South America, please visit www.toucansmarthome.com

For Europe and UK region, please visit www.toucansmarthome.co.uk

VuPoint Solutions, Inc. (USA): 710 Nogales Street, City of Industry, CA 91748
VuPoint (Europe) Company Limited: Innovation Center, Longbridge Technology Park, Longbridge, Birmingham
B31 2TS



facebook.com/toucansmarthome



Instagram.com/toucansmarthome

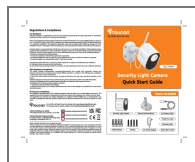


Youtube.com/c/toucansmarthome



©2021 VUPOINT SOLUTIONS, INC. All Rights Reserved. The Toucan logo and Toucan are trademarks or registered trademarks of VuPoint Solutions inc. in the United States and other countries. App Store is a registered trademark of Apple Inc. iOS is a registered trademark of Cisco Technology, Inc. in the U.S. and other countries and is under license. Android and Google Play are registered trademarks of Google LLC. Product names, logos, brands, and other trademarks referred to herein are the property of their respective trademark holders. All trademarks remain the property of their respective holders and are used only to describe the products or services being provided. These trademark holders are not affiliated with VuPoint Solutions, Inc. They do not sponsor or endorse VuPoint Solutions, Inc's products or services.

Documents / Resources



[Toucan TSLC10WU Security Light Camera](#) [pdf] User Guide
LTC03, 2AK7ELTC03, TSLC10WU Security Light Camera, Security Light Camera, Security Light Camera, Light Camera

[Manuals+](#).