



totum 071940 Bright Lights Light String Pandacorn Instruction Manual

[Home](#) » [Totum](#) » totum 071940 Bright Lights Light String Pandacorn Instruction Manual 

Contents

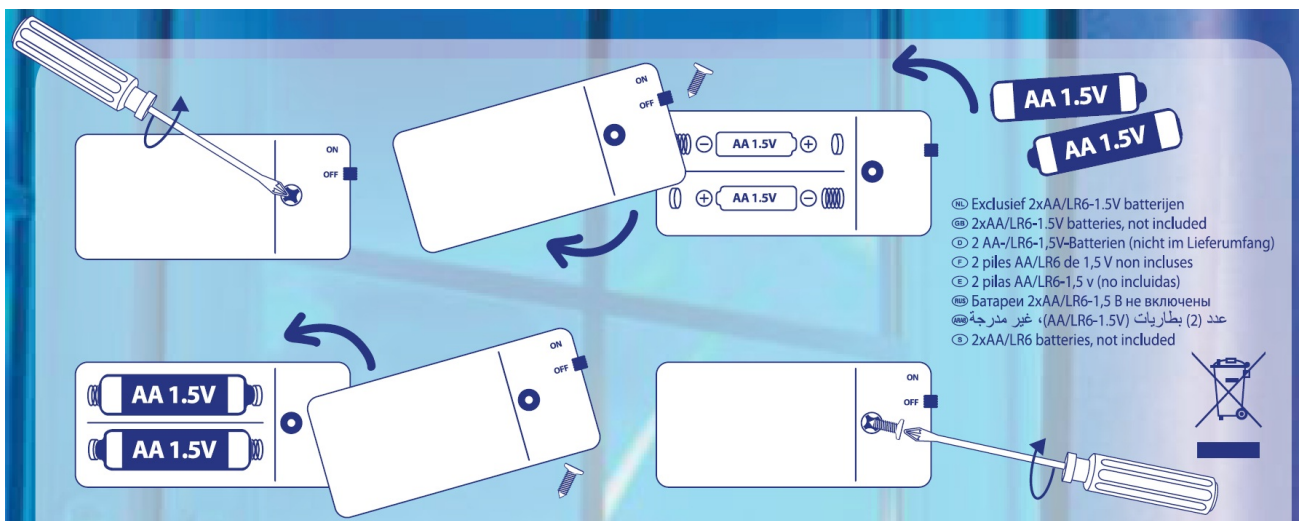
- [1 totum 071940 Bright Lights Light String Pandacorn](#)
- [2 Documents / Resources](#)
- [3 Related Posts](#)



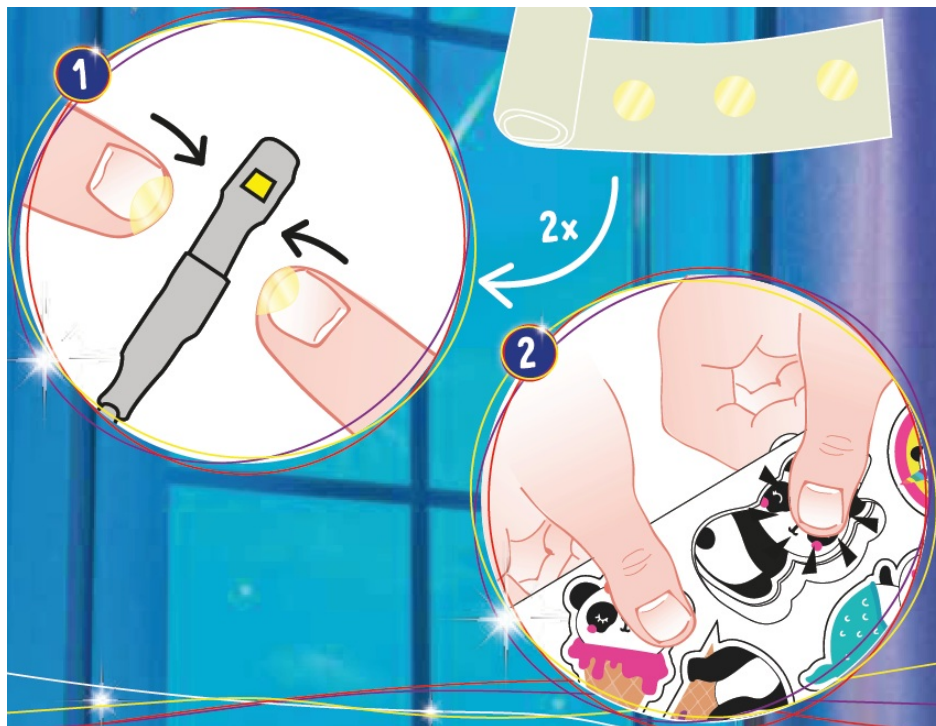
totum 071940 Bright Lights Light String Pandacorn



2xANLR6-1.SV batteries, not included



Place and take out batteries by first placement to the spring, then press or pull battery out. Rechargeable batteries have to be removed before charging the battery. Rechargeable batteries are only to be charged under adult supervision. Different types of batteries or old and new shall not be mixed. Insert batteries with the right polarity. Remove exhausted batteries. Supply terminal shall not be short circuited. Protect the environment by not disposing of this product with household waste (2012/19/EU). Check your local authorities for recycling advice and facilities. Non-rechargeable batteries are not to be recharged. 'Try Me' unit contains 1 x CR2032 battery, this unit is not accessible and must be recycled.



Documents / Resources



[totum 071940 Bright Lights Light String Pandacorn](#) [pdf] Instruction Manual
071940, Bright Lights Light String Pandacorn, 071940 Bright Lights Light String Pandacor, Light String Pandacorn