

How to use the router's WPS button?

Contents

- [1 How to use the router's WPS button?](#)
- [2 Application introduction:](#)
- [3 Diagram](#)
- [4 Set up steps](#)
- [5 DOWNLOAD](#)
- [6 Related Posts](#)

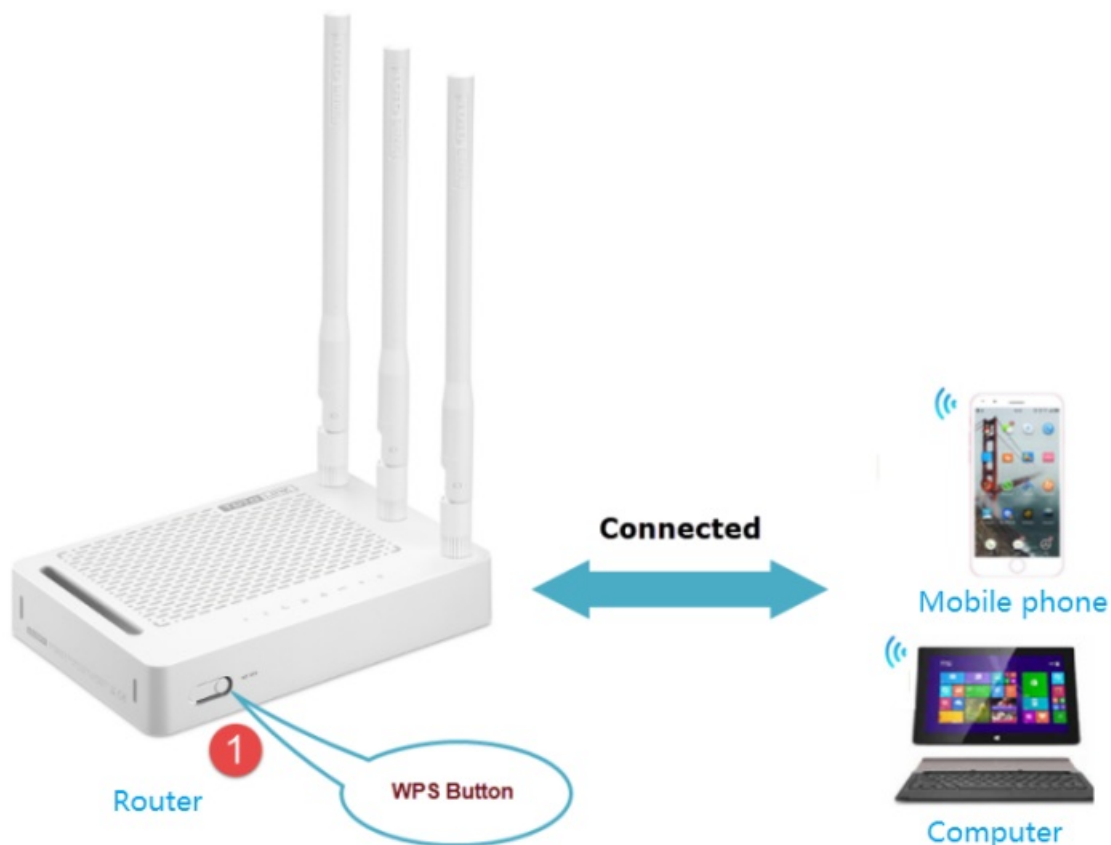
How to use the router's WPS button?

It is suitable for: **All TOTOLINK routers**

Application introduction:

This article describes how to quickly make a wireless connection through the router's WPS button.

Diagram



Set up steps

STEP-1:

* Please make sure your router has WPS button before setting.

* Please make sure your wireless client supports WPS functionality before setting.

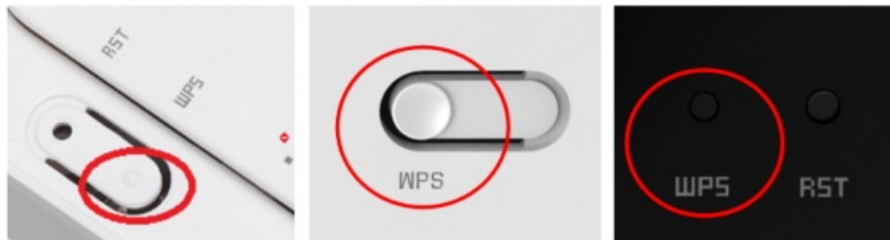
STEP-2:

Press WPS button on the router for 1s, WPS enabled. There are two types of wireless router WPS buttons: RST/WPS button and WPS button. As shown below.

2-1. RST/WPS button



2-2. WPS button

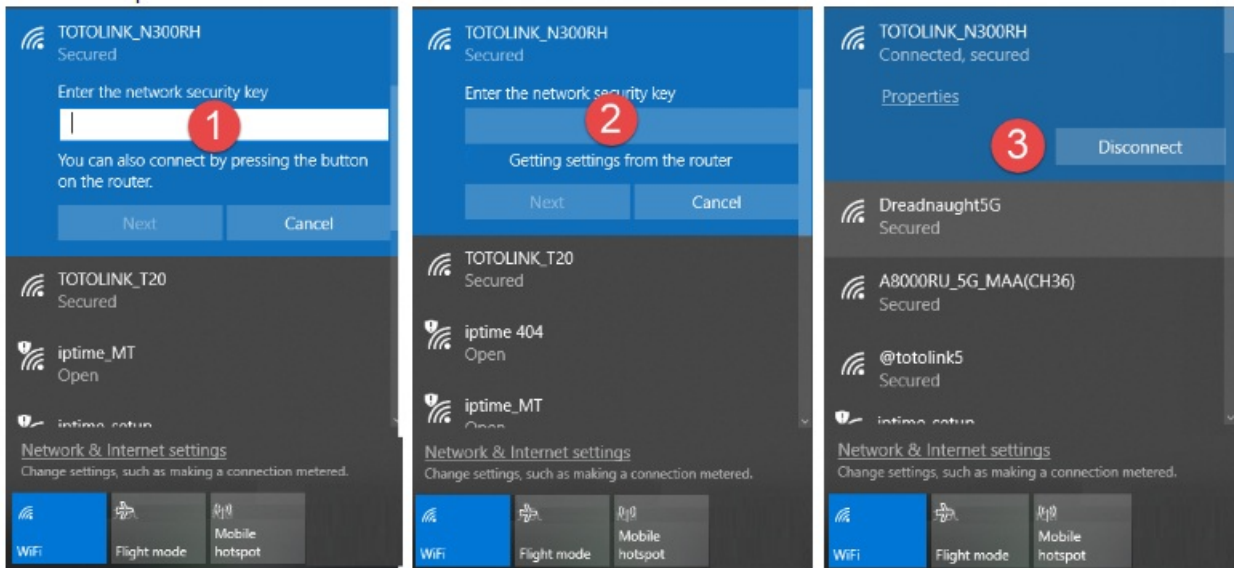


Note: If router is a RST/WPS button, no more than 5s, router will be reset to factory defaults if you press it for more than 5s.

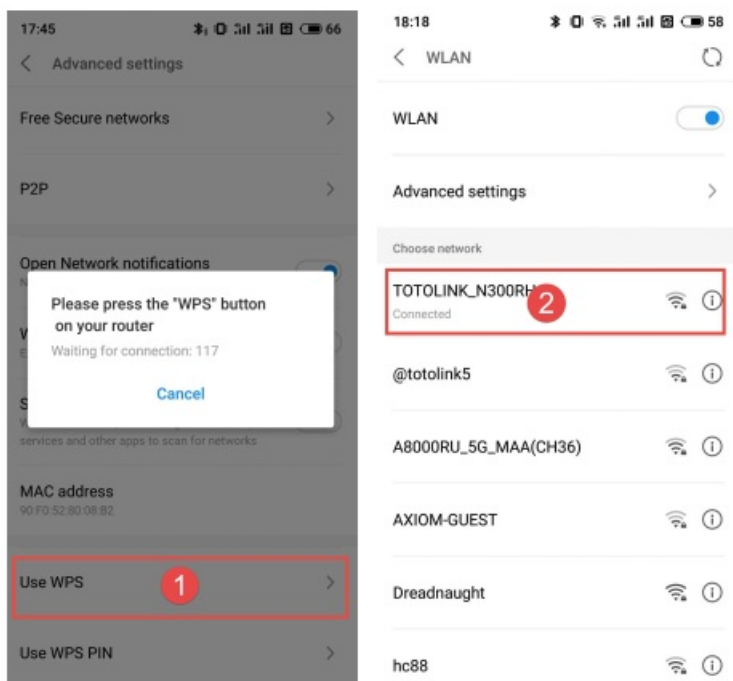
STEP-3:

After pressing the WPS button, use wireless client to connect to the router WIFI signal. Using Computer and Mobile phone wireless connection as an example. As shown below.

3-1. Computer wireless connection:



3-2. Mobile phone wireless connection:



DOWNLOAD

How to use the router's WPS button – [[Download PDF](#)]

