

How to use Printer Server via the Router

Contents

- [1 How to use Printer Server via the Router?](#)
- [2 DOWNLOAD](#)
- [3 Related Posts](#)

How to use Printer Server via the Router?

It is suitable for **N300RU**

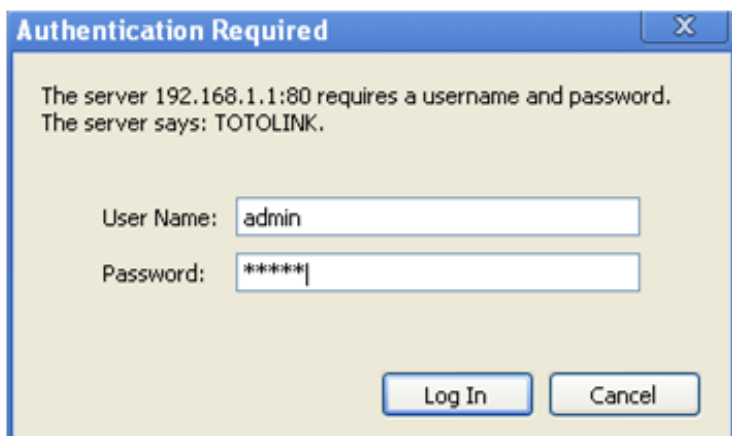


STEP-1: Accessing Web page

1-1. Connect to the Router by typing 192.168.1.1 in the address field of Web Browser. Then press **Enter** key.



1-2. It will show up the following page that requires you to enter valid User Name and Password:



The screenshot shows a Windows-style dialog box titled 'Authentication Required'. The text inside says: 'The server 192.168.1.1:80 requires a username and password. The server says: TOTOLINK.' Below this, there are two input fields: 'User Name:' with 'admin' entered, and 'Password:' with '*****' entered. At the bottom, there are two buttons: 'Log In' and 'Cancel'.

Enter **admin** for User Name and Password, both in lower case letters. Then click **Log In** button or press **Enter** key.

STEP-2: Printer server setting

2-1. Click USB Storage->Printer Server, and select **Enable**. Now the setting on the Router for printer server is finished.



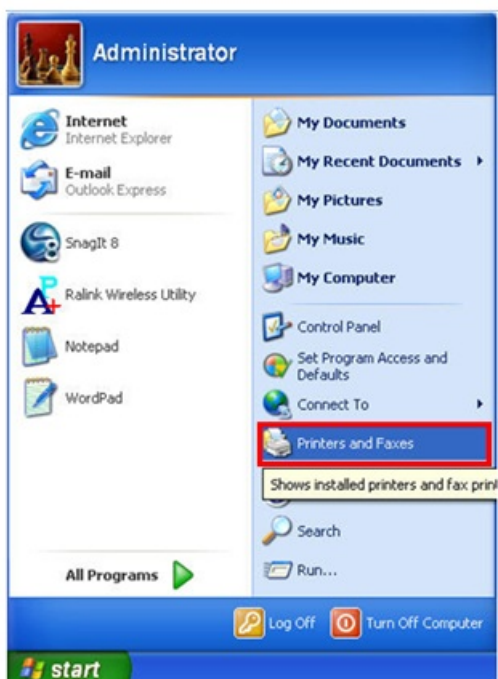
2-2. Before you use this function, please make sure:

- All the computers connected to this router have installed Printer Driver. If not, please install it first. (Please Refer to **How to Install Printer Driver**)
- Your Printer must be an USB Printer that can be connected to the router.

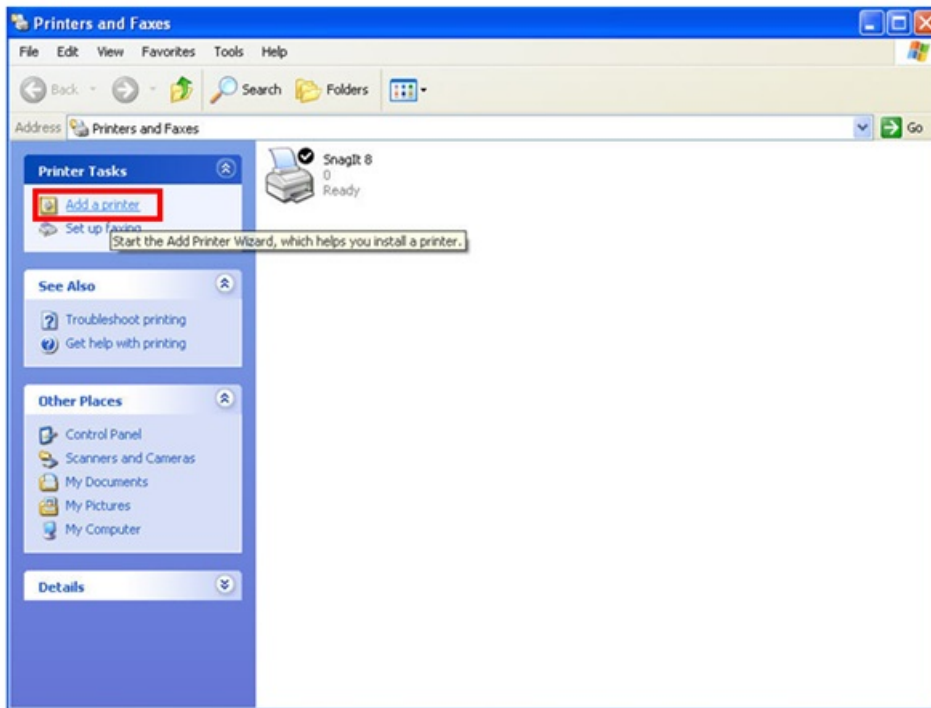
STEP-3: Go to the printer server interface

If all that are ready, please click **Start Server** button to share the printer service connected to the USB port of router.

3-1. Click **Start—Printers and Faxes**:



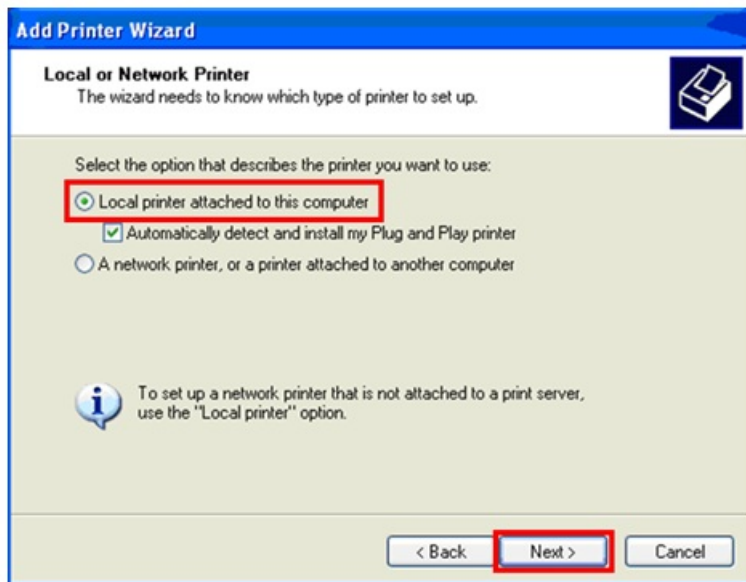
3-2. Click **Add a printer** on the left:



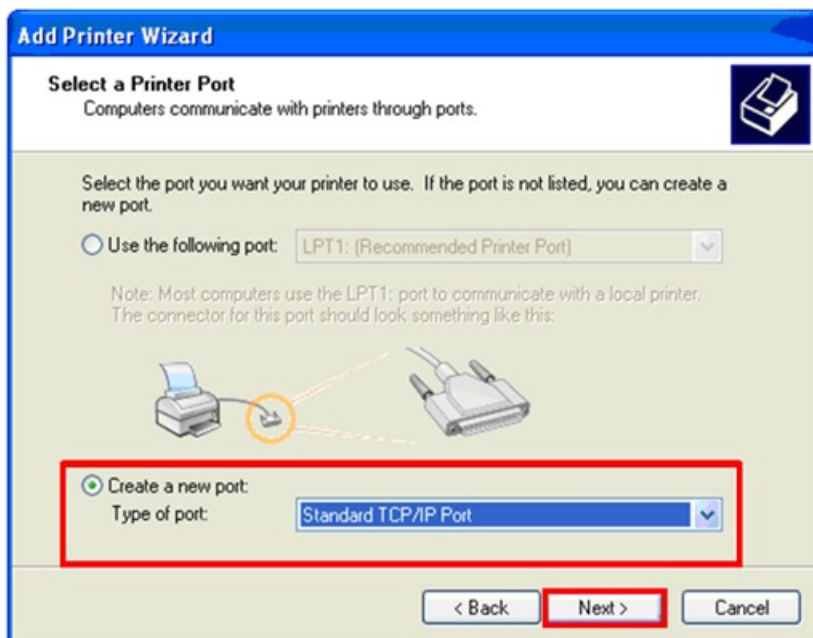
3-3. Click **Next** while it comes out the welcome interface as below.



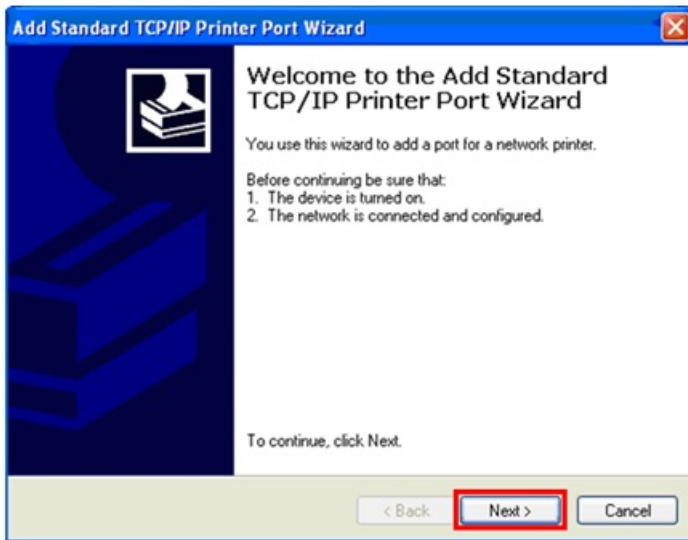
3-4. Choose “**Local printer attached to this computer**” and click **Next**.



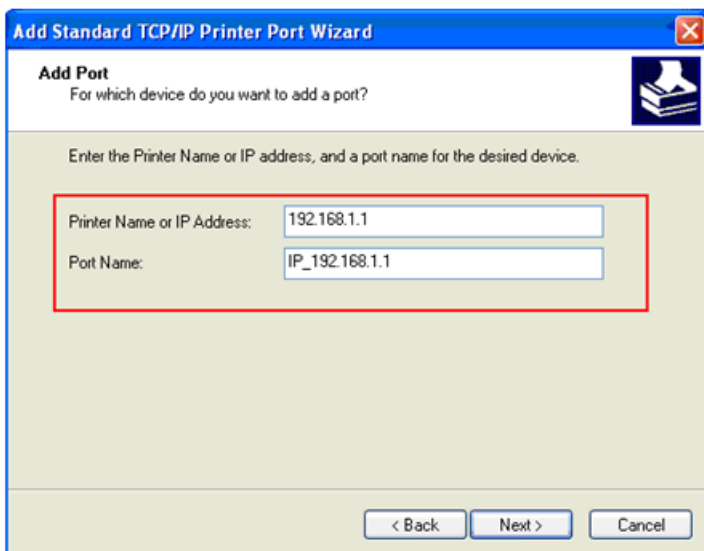
3-5. Select **"Create a new port"** and choose **"Standard TCP/IP Port"** for type of port. Click **Next**.



3-6. Please click Next on below window.



3-7. The most **important**: please type in the gateway of your wireless router, by default, it is 192.168.1.1 for TOTOLINK wireless router.



3-8. Now you have to select the right Printer Manufacturer and model number and install it.

Note: Make sure the Printer has been plugged into the USB port of router, else it will show you that there isn't any printer founded.

3-9. After installation, you can share the USB Printer connected to your router.

If you don't want to share your Pinter any more, just choose Disable in the printer server interface

DOWNLOAD

How to use Printer Server via the Router – [[Download PDF](#)]

Manuals+.