

# How to use Ping Command

## Contents

- [1 How to use Ping Command?](#)
- [2 Method One](#)
- [3 Method Two](#)
- [4 DOWNLOAD](#)
- [5 Related Posts](#)

## How to use Ping Command?

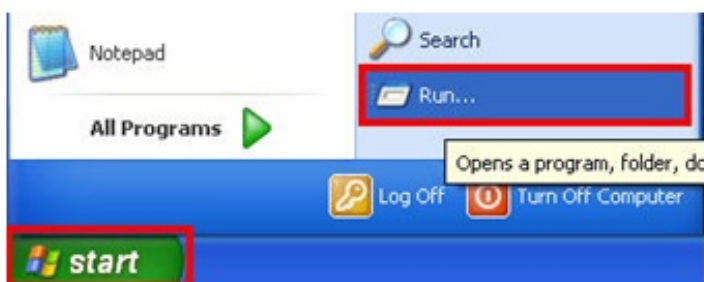
It is suitable for: **All TOTOLINK routers**

**Application introduction:** Ping is used to test connectivity to a specific host in the network with the use of Internet Protocol (IP) address or a specific website URL.

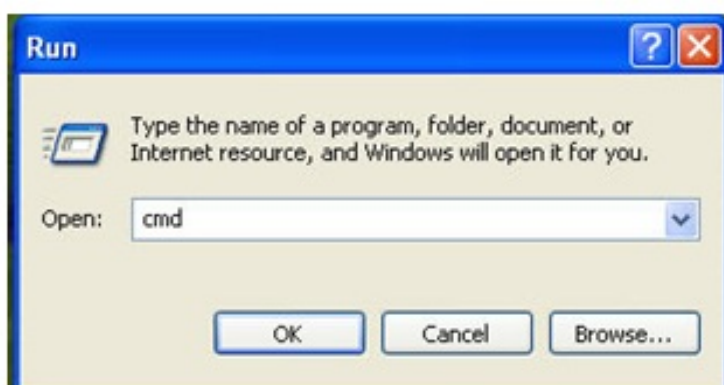
## Method One

For Windows W7:

STEP-1. Click **Start**-> **Run**.



STEP-2. Enter **cmd** in the field and click OK button.



STEP-3. Type in **Ping 192.168.1.1** and click enter key.

```
Administrator: C:\Windows\system32\cmd.exe
Microsoft Windows [Version 10.0.16299.15]
(c) 2017 Microsoft Corporation. All rights reserved.

C:\Users\Administrator>ping 192.168.1.1

Pinging 192.168.1.1 with 32 bytes of data:
Reply from 192.168.1.1: bytes=32 time<1ms TTL=64
Reply from 192.168.1.1: bytes=32 time<1ms TTL=64
Reply from 192.168.1.1: bytes=32 time<1ms TTL=64
Reply from 192.168.1.1: bytes=32 time<1ms TTL=64

Ping statistics for 192.168.1.1:
    Packets: Sent = 4, Received = 4, Lost = 0 (0% loss),
    Approximate round trip times in milli-seconds:
        Minimum = 0ms, Maximum = 0ms, Average = 0ms

C:\Users\Administrator>_
```

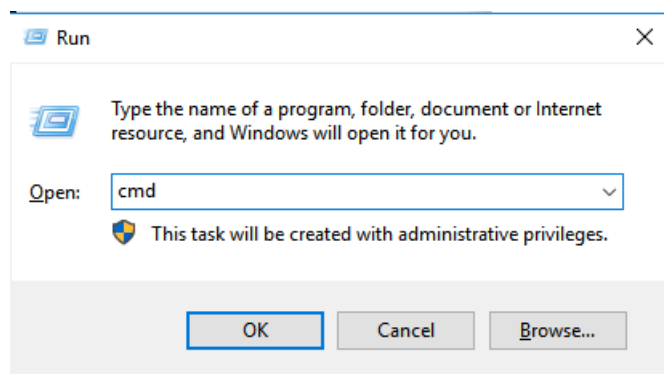
## Method Two

For Windows 7 8, 8.1 and 10:

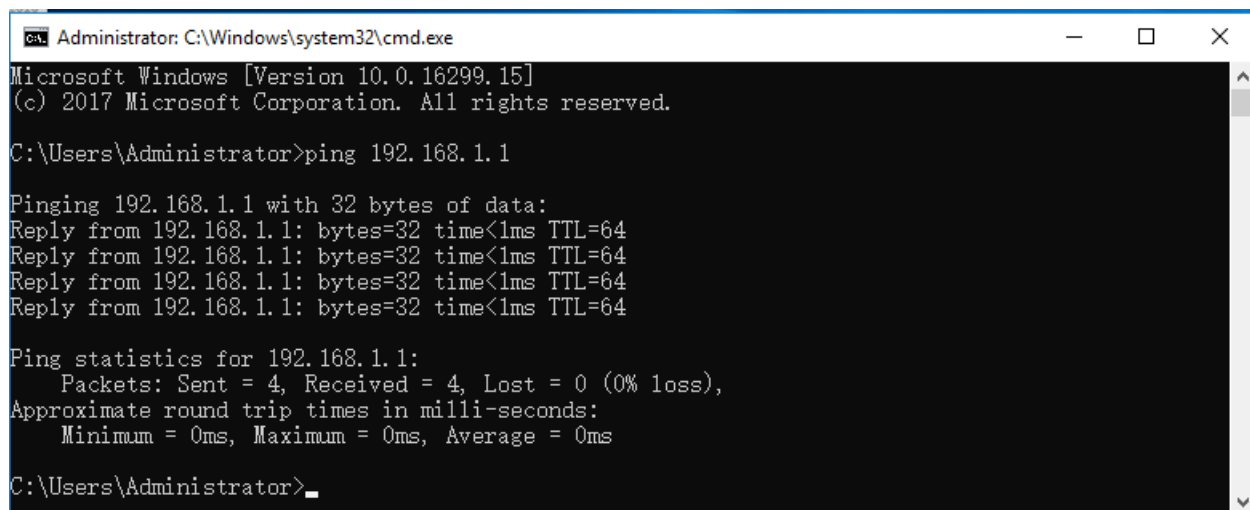
STEP-1. Click on **windows key+ R key** on the keyboard at the same time.



STEP-2. Enter **cmd** in the field and click OK button.



STEP-3. Type in Ping **192.168.1.1** and click enter key.



A screenshot of a Windows Command Prompt window titled "Administrator: C:\Windows\system32\cmd.exe". The window shows the output of a ping command to 192.168.1.1. The text is as follows:

```
Microsoft Windows [Version 10.0.16299.15]
(c) 2017 Microsoft Corporation. All rights reserved.

C:\Users\Administrator>ping 192.168.1.1

Pinging 192.168.1.1 with 32 bytes of data:
Reply from 192.168.1.1: bytes=32 time<1ms TTL=64
Reply from 192.168.1.1: bytes=32 time<1ms TTL=64
Reply from 192.168.1.1: bytes=32 time<1ms TTL=64
Reply from 192.168.1.1: bytes=32 time<1ms TTL=64

Ping statistics for 192.168.1.1:
    Packets: Sent = 4, Received = 4, Lost = 0 (0% loss),
    Approximate round trip times in milli-seconds:
        Minimum = 0ms, Maximum = 0ms, Average = 0ms

C:\Users\Administrator>_
```

---

## DOWNLOAD

How to use Ping Command – [[Download PDF](#)]

---